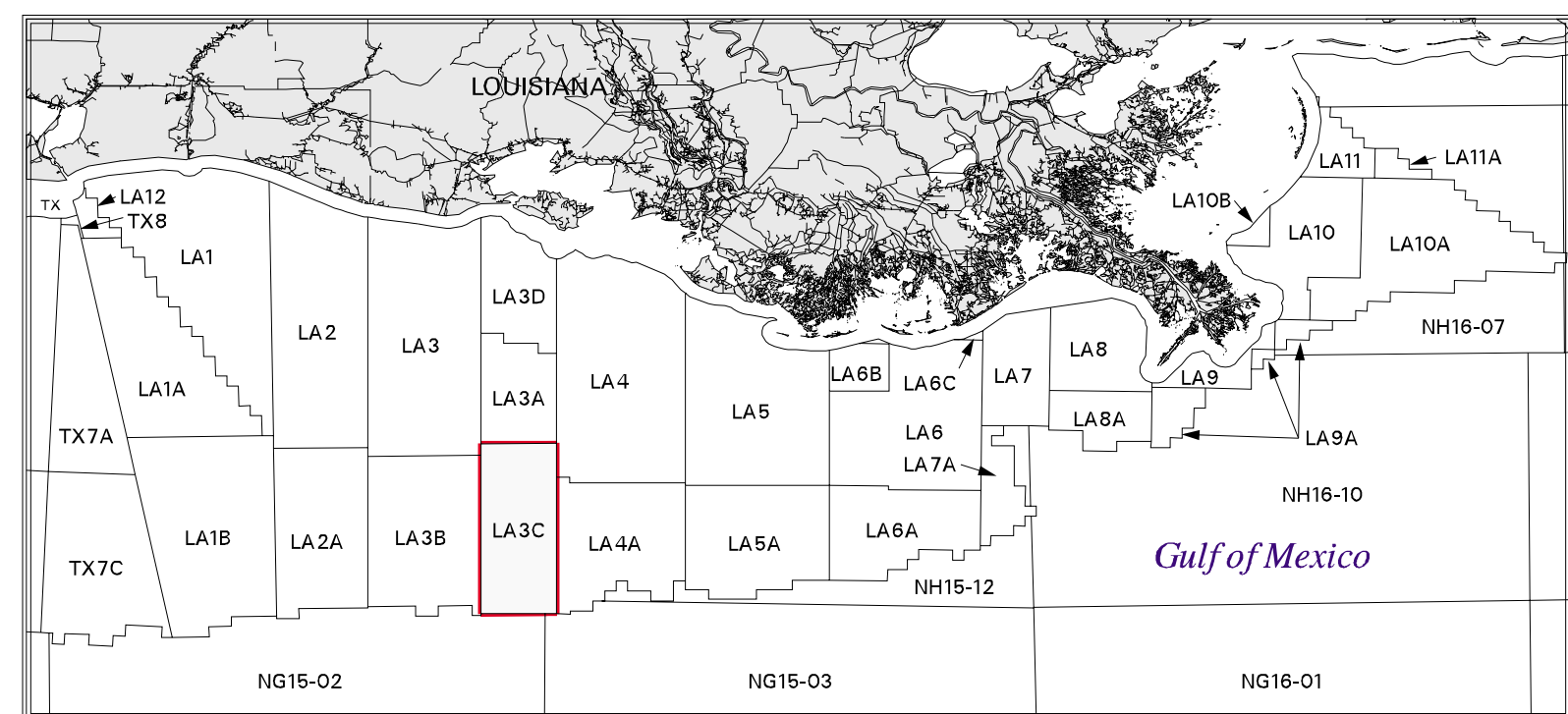
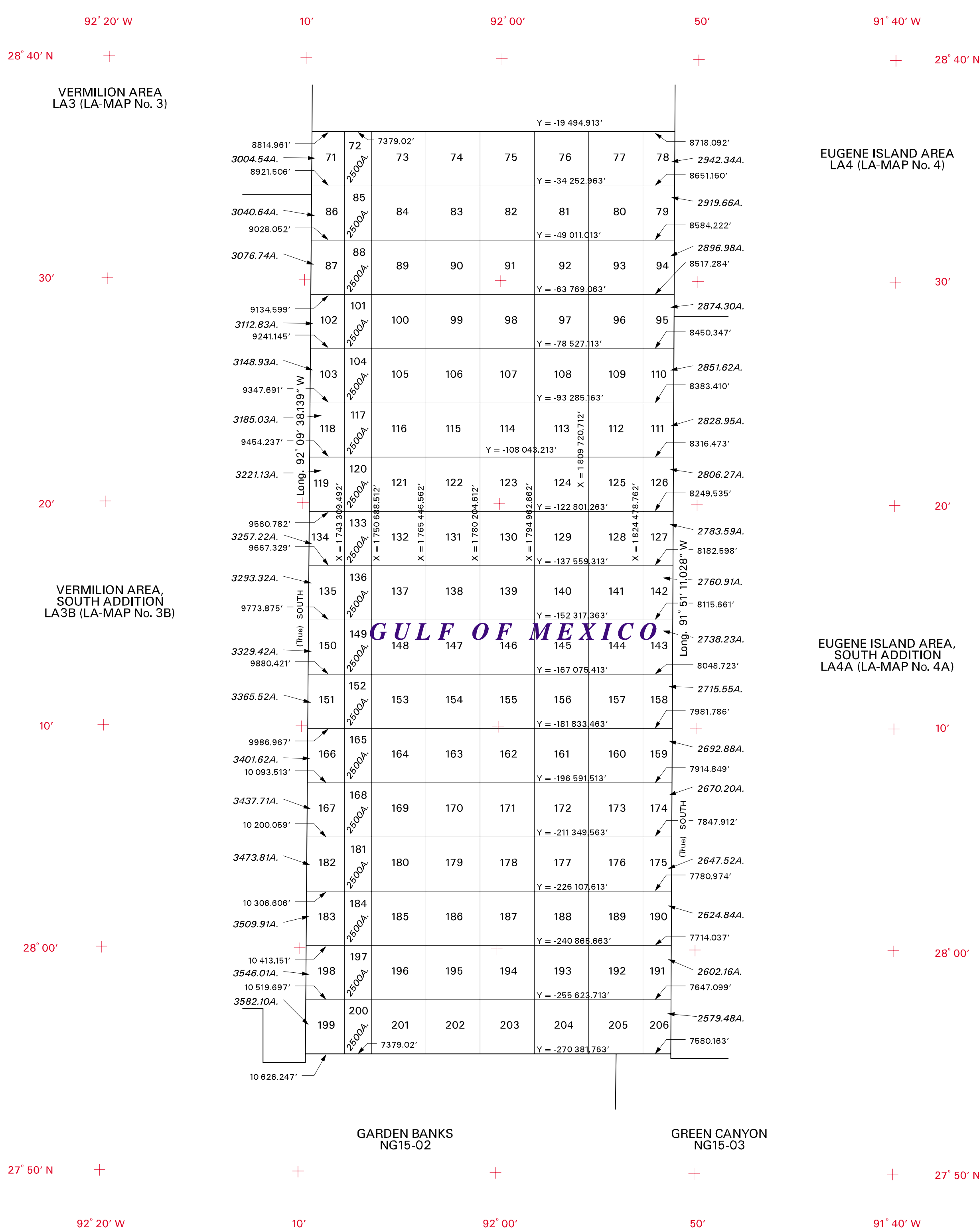




LOUISIANA  
GULF COAST INDEX



SOUTH MARSH AREA  
LA3A (LA-MAP No. 3A)



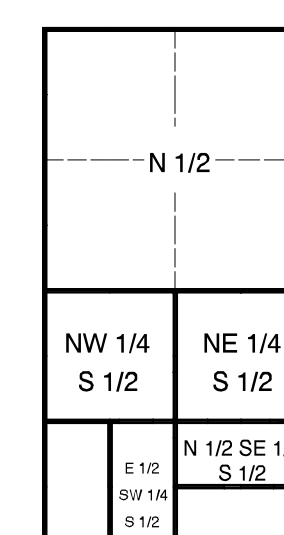
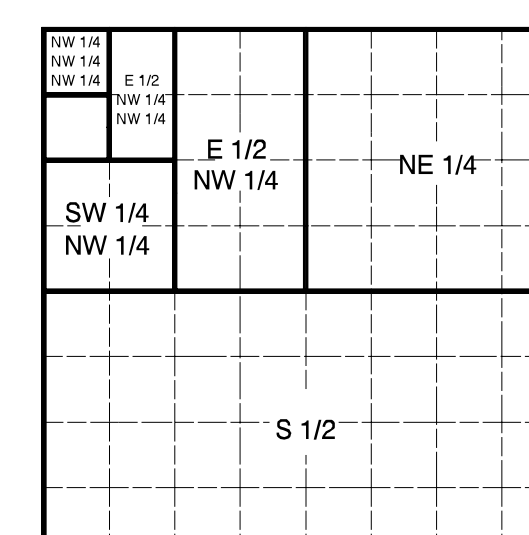
All blocks are based on the Louisiana (Lambert) Plane Coordinate System, South Zone, with X origin = 2,000,000' at 91° 20' W and Y origin = 0.00' at 28° 40' N.

Regular blocks are 14,758.05 feet on a side and contain 5,000 acres. Areas and dimensions of the irregular blocks are as indicated.

This revised map supersedes leasing map SOUTH MARSH ISLAND AREA, SOUTH ADDITION, LA-MAP No. 3C, approved 08-SEP-1959, revised 01-JUN-1988, and LA3C revised 01-SEP-1999.

Copies of these diagrams and other information may be obtained at the appropriate MMS OCS Region.

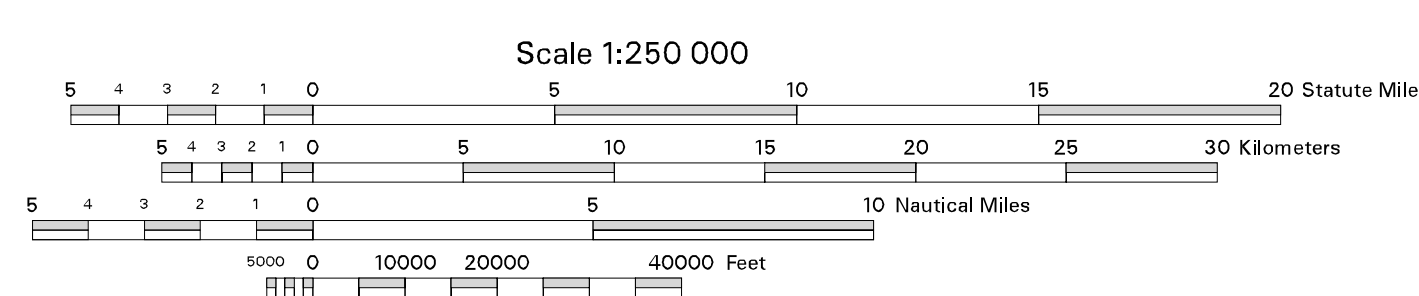
Subdivision of Blocks on the Outer Continental Shelf



Typical method of subdivision of the regular blocks, each subdivision being an aliquot part of the total, based on midpoint subdivision throughout.

Typical method of subdivision of the irregular blocks, each subdivision being an aliquot part of the total, based on midpoint subdivision throughout.

UNITED STATES DEPARTMENT OF THE INTERIOR  
MINERALS MANAGEMENT SERVICE  
OUTER CONTINENTAL SHELF LEASING MAP  
**LOUISIANA**  
NORTH AMERICAN DATUM OF 1927



This diagram is prepared in accordance with 30 CFR 256.8

For the Director

*Island Hymahala*  
Chief, Leasing Division, Mapping and Boundary Branch  
Denver, Colorado Date 01-NOV-2000

Revised