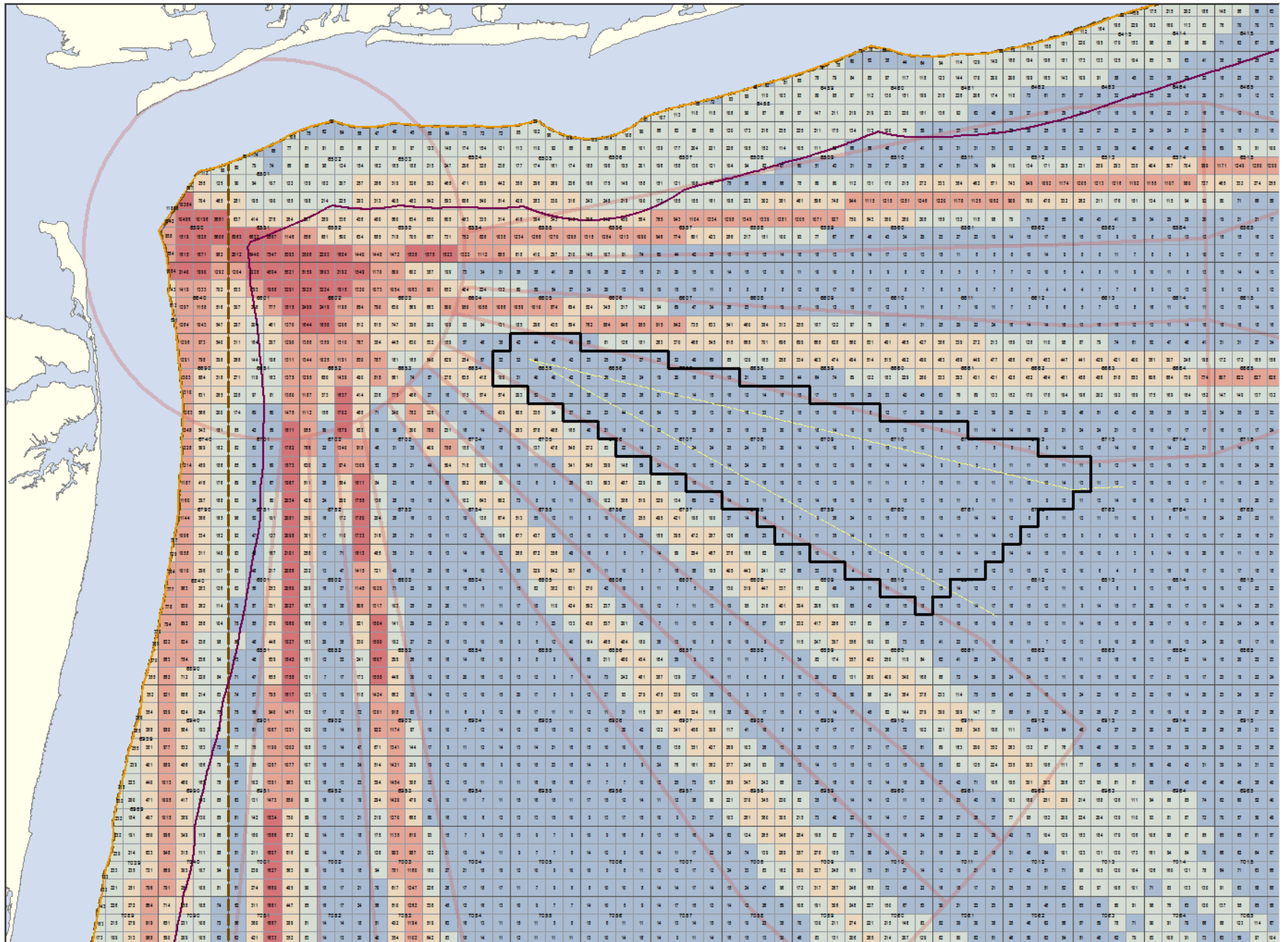
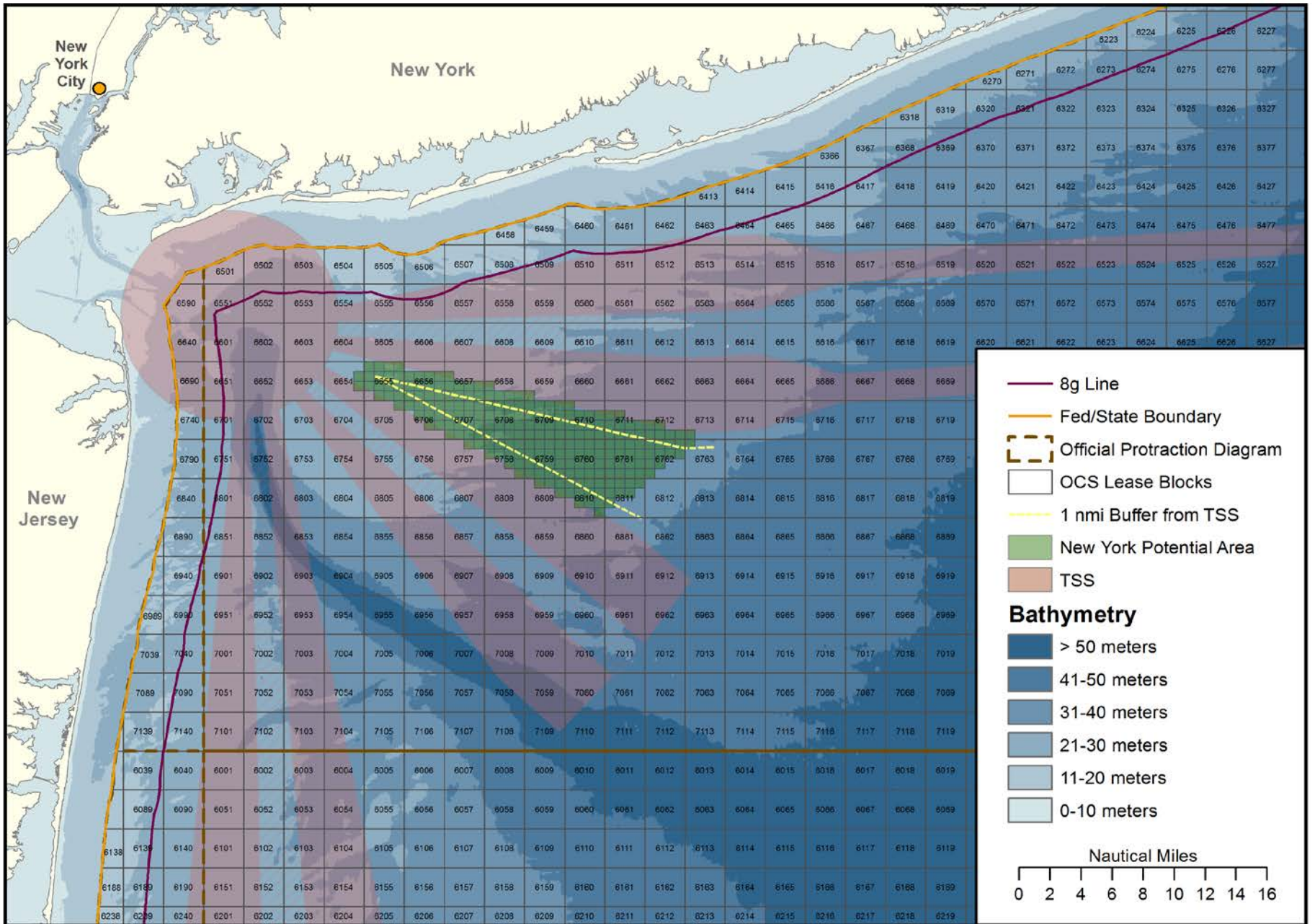


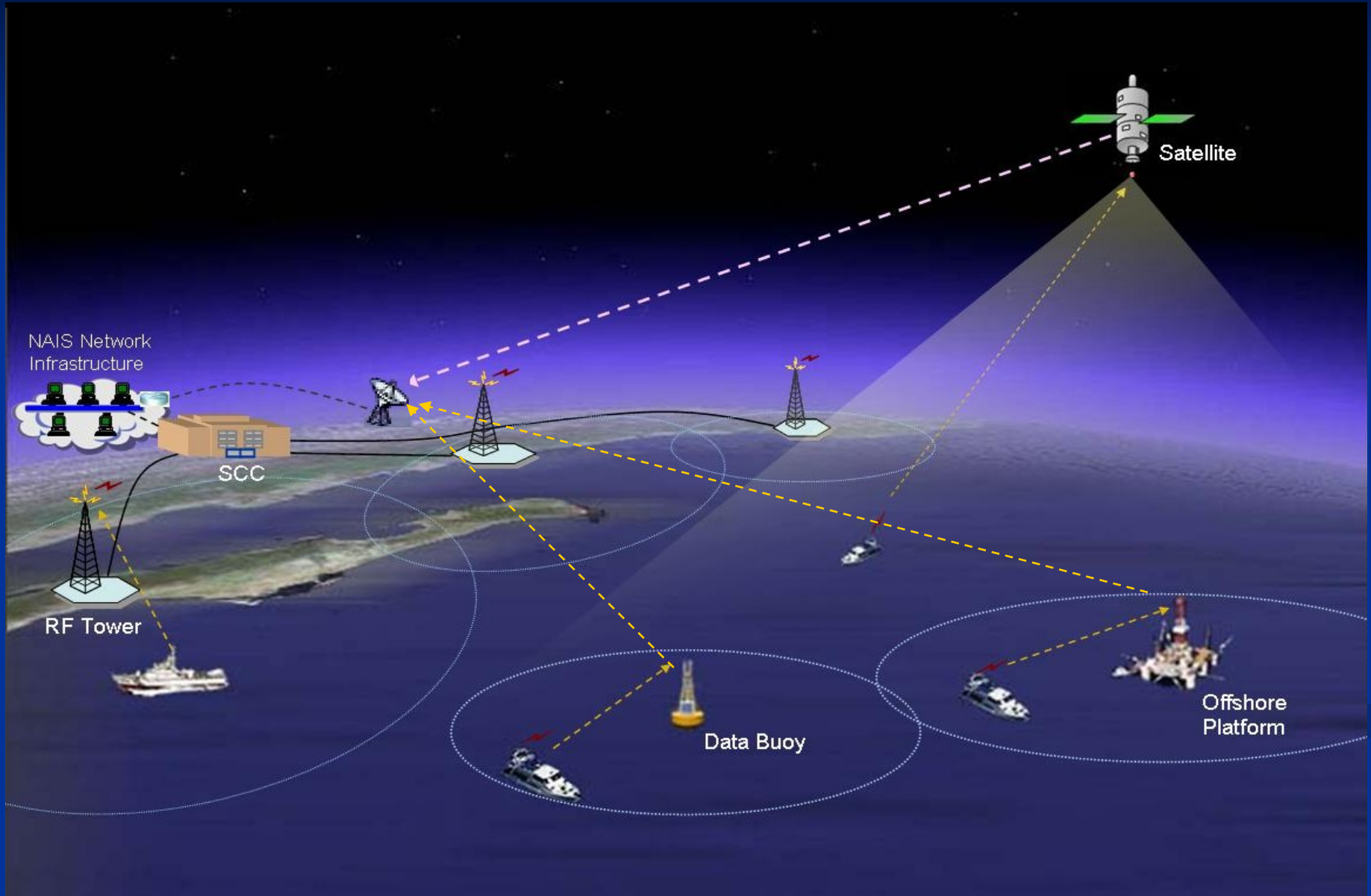
Vessel Traffic Data and Analysis



New York Potential Area



NAIS Overview

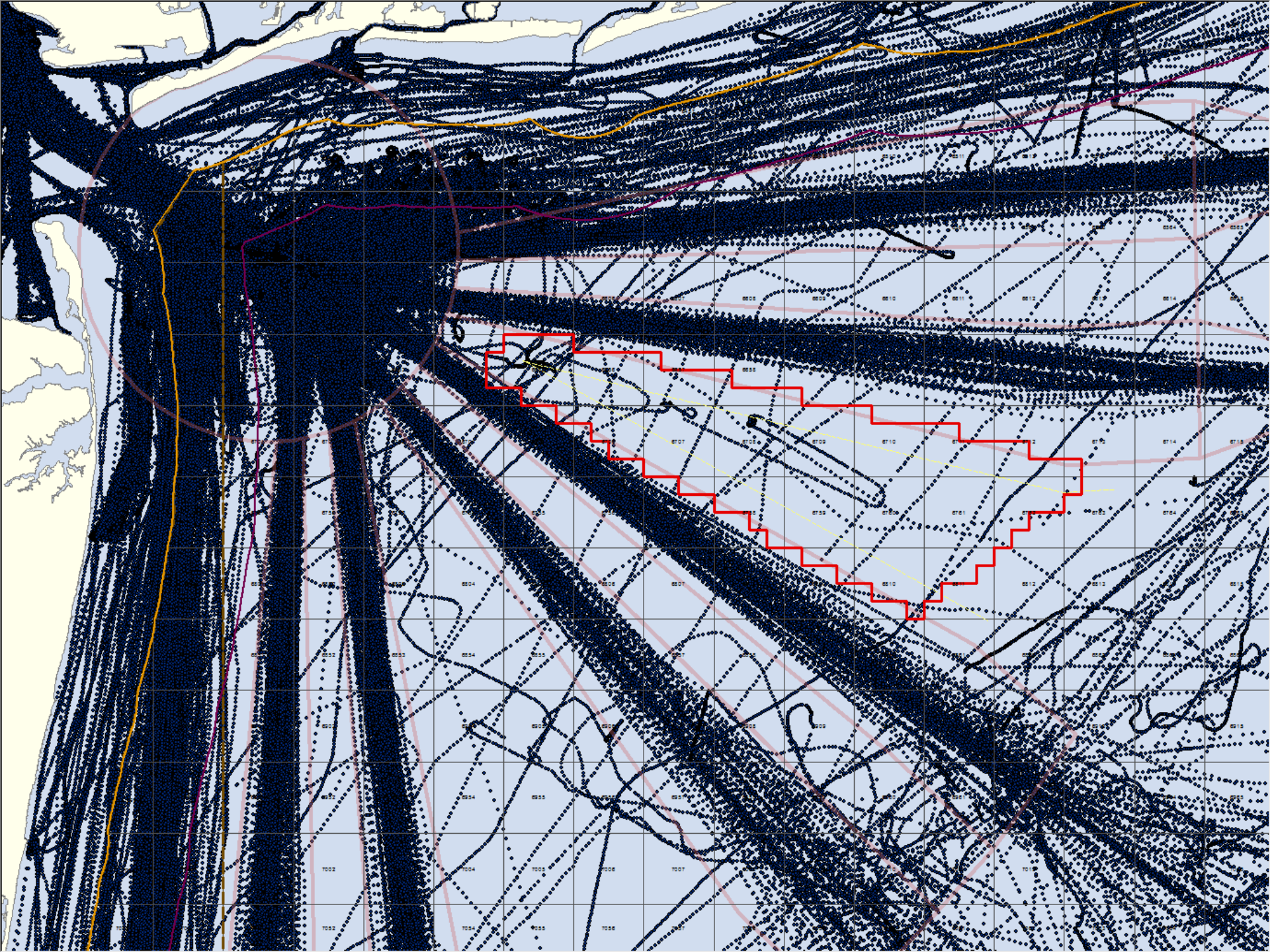


Shipboard AIS

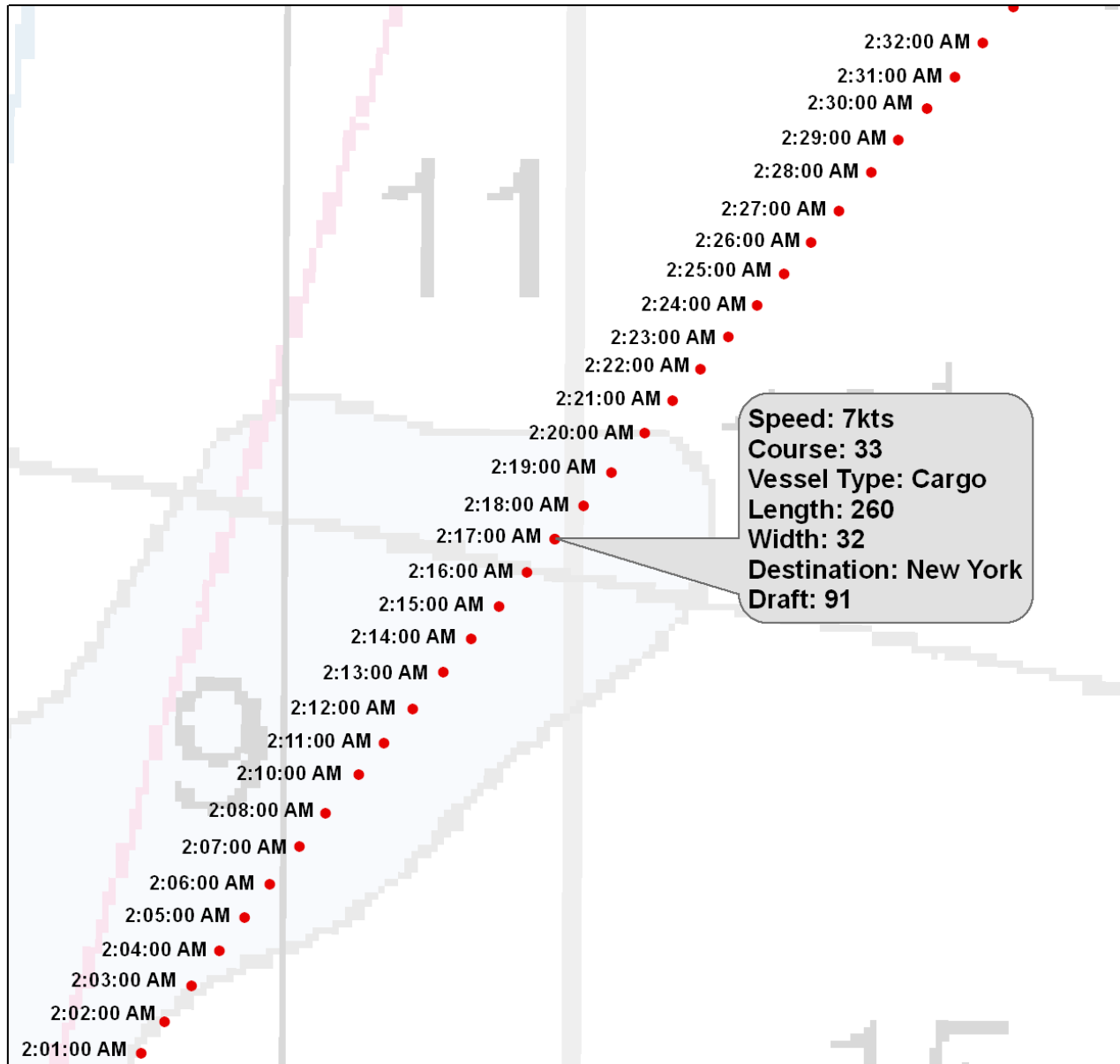


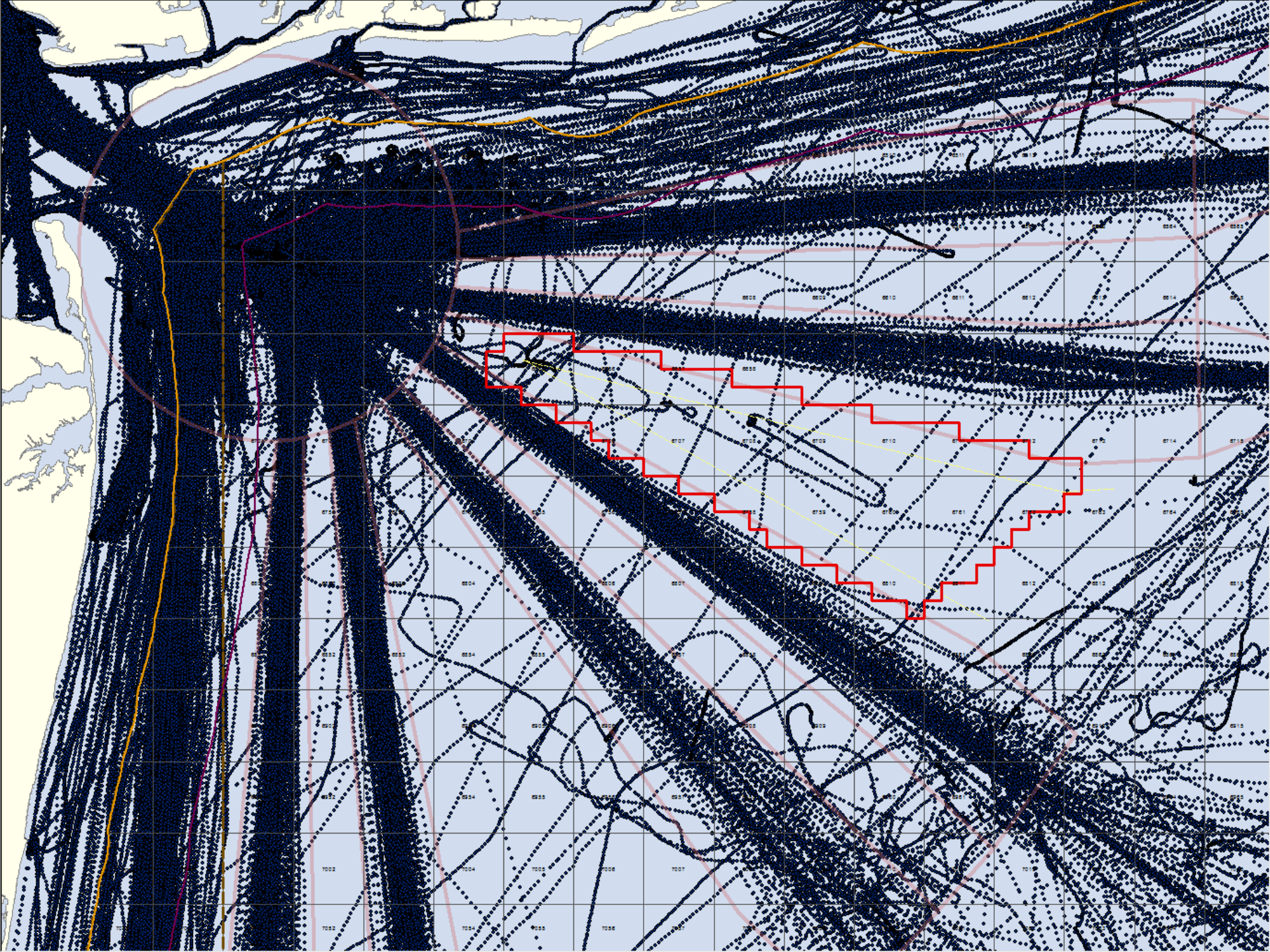
AIS Analysis Input Data

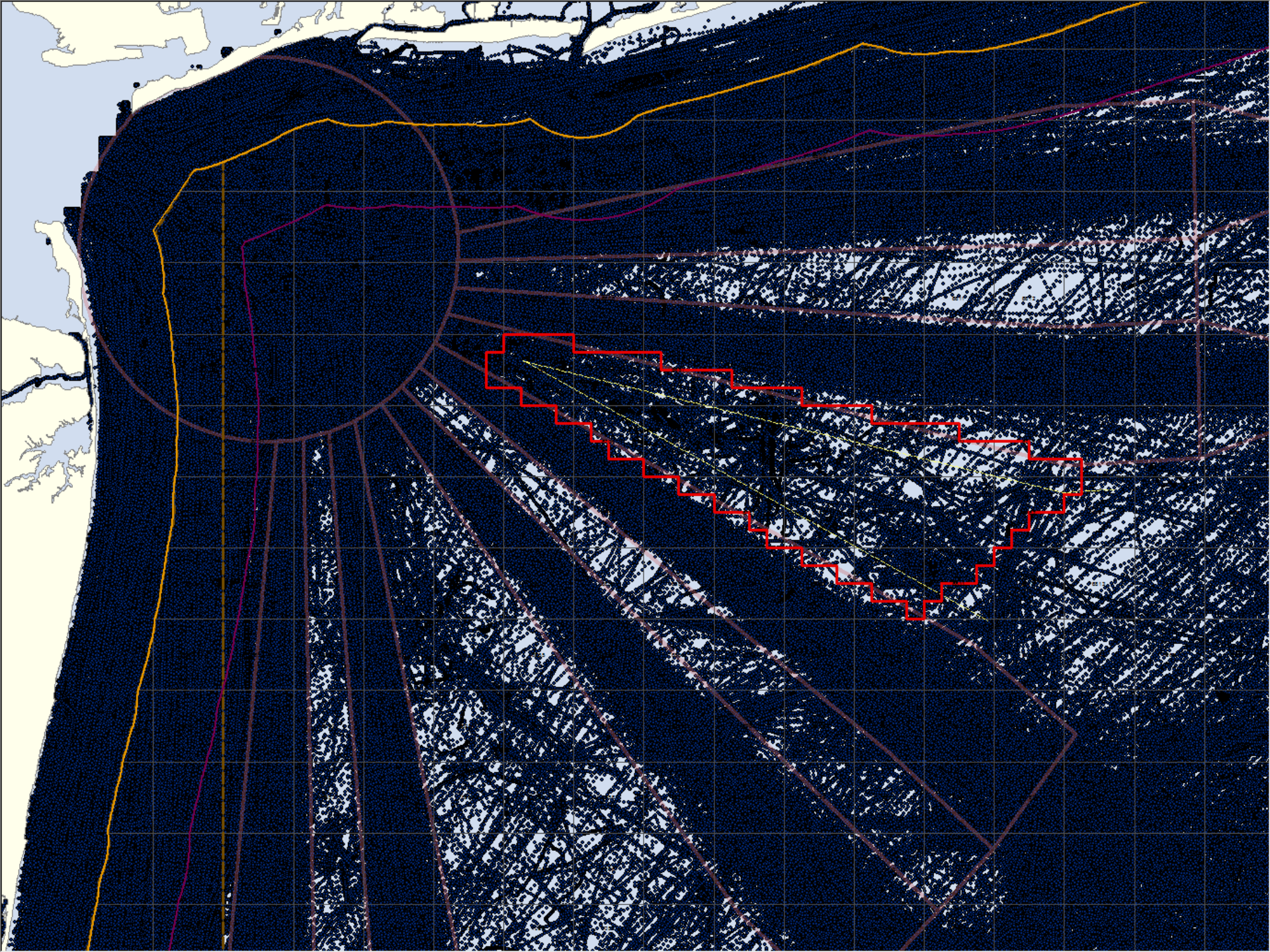
- AIS Returns for 2009
- Monthly Data for Atlantic
- Each Month is Clipped by Protraction, then Merged
- AIS Analysis Input Includes all Months for 2009



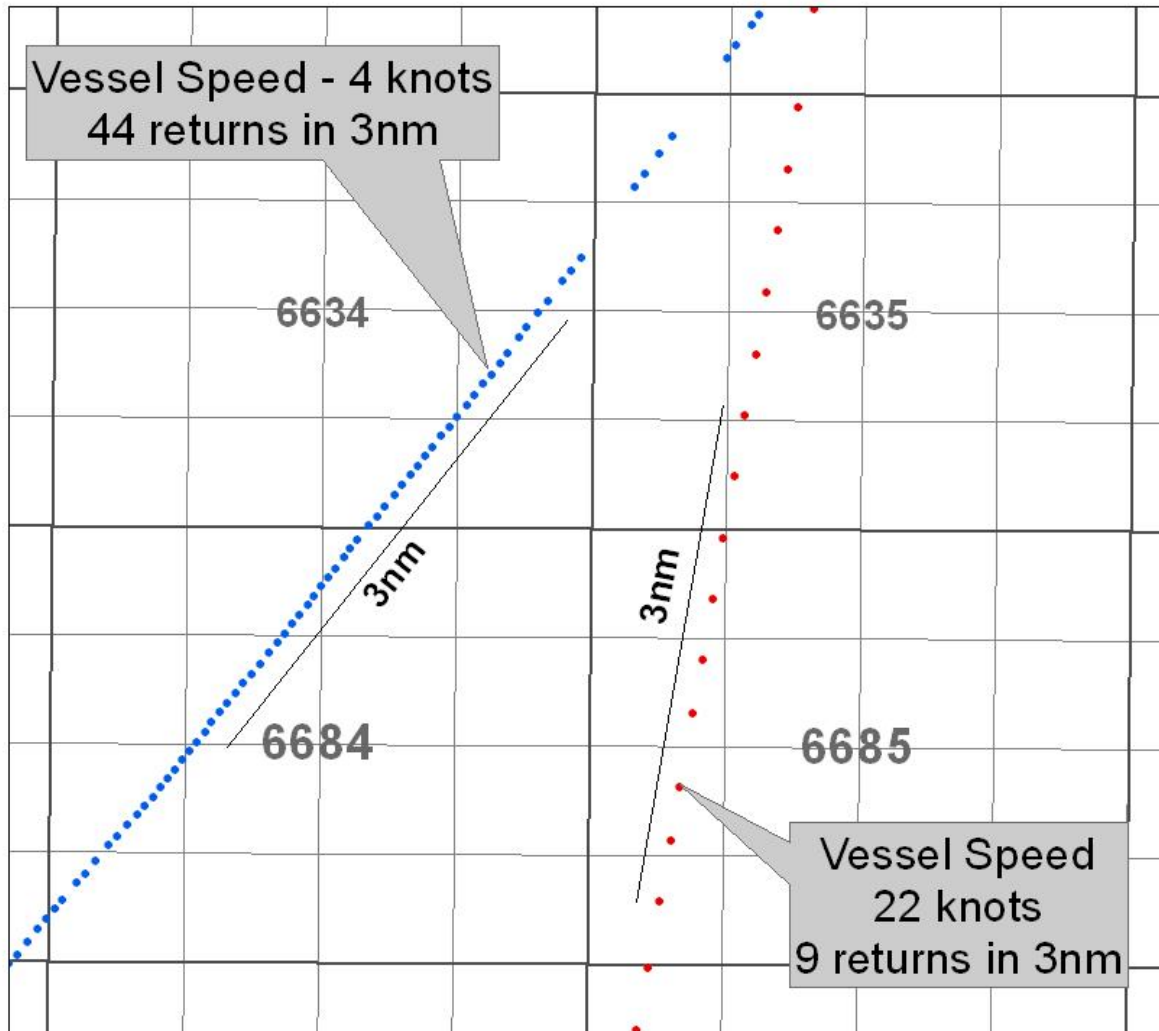
AIS returns – Vessel Data

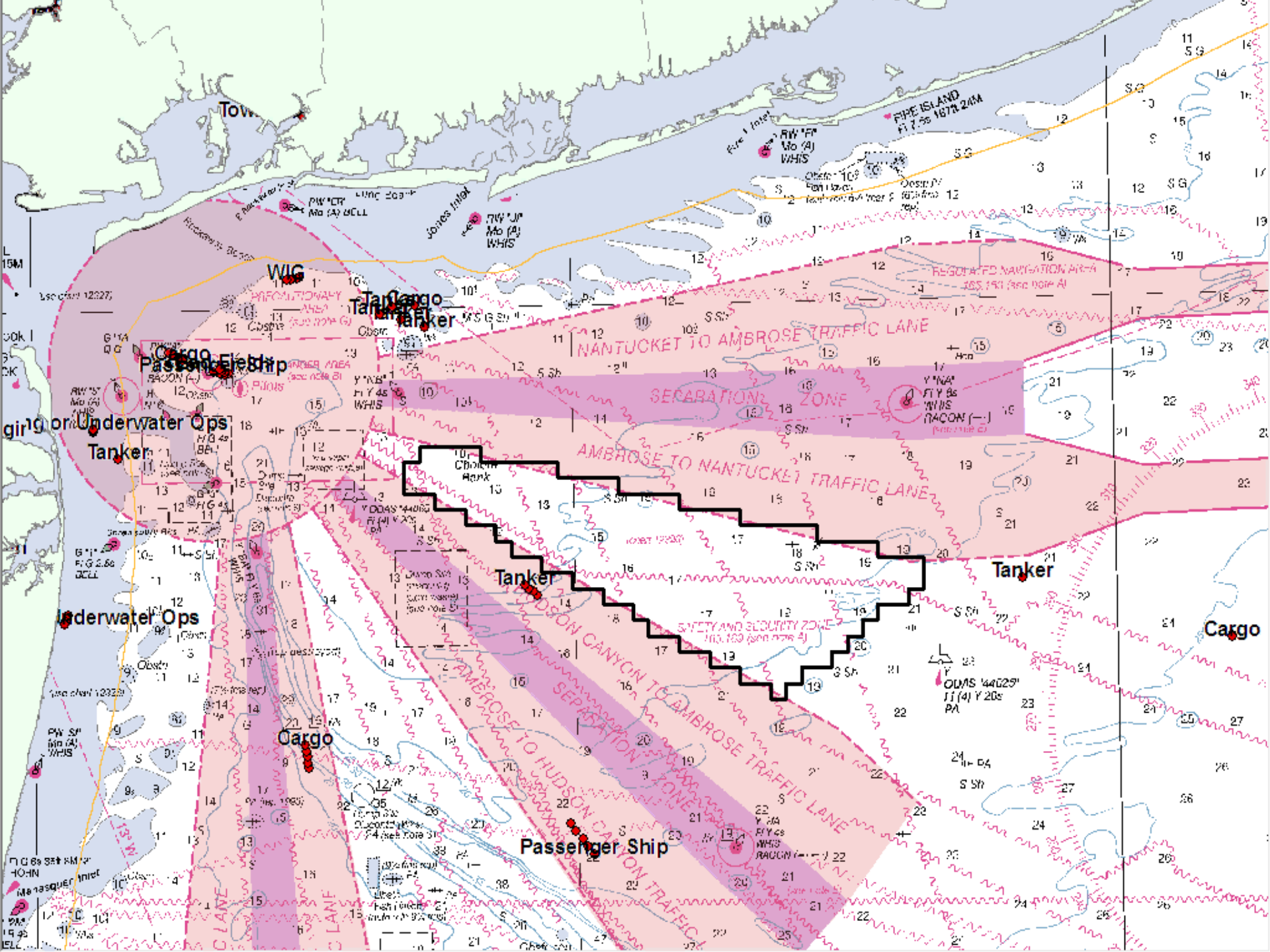


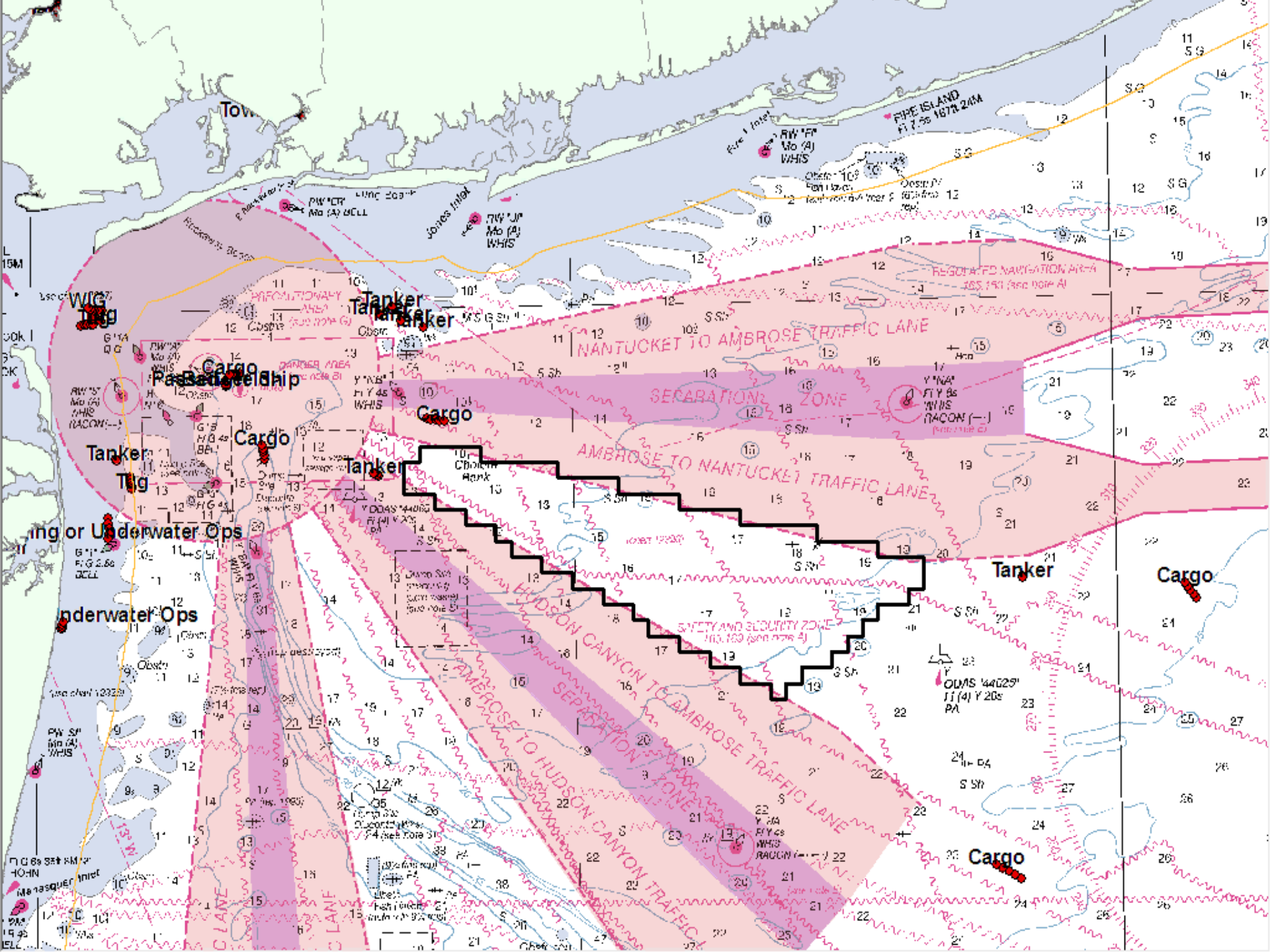




Vessel Speed and AIS Point Density



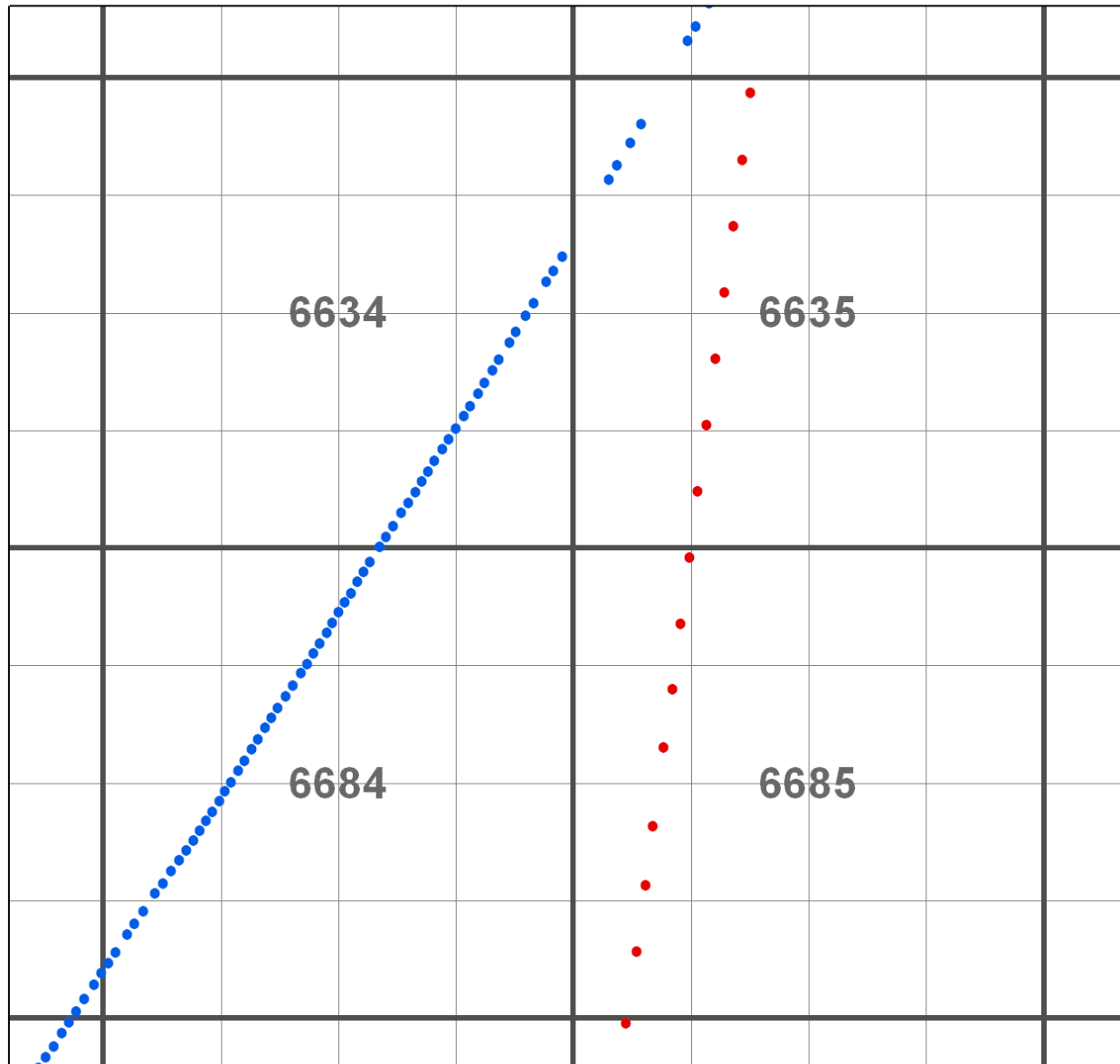




AIS Density Mapping

- Quantify unique vessels (MMSI) passing through each leasing unit (aliquot) per year.
- Extract deep draft vessel types for depicting traffic volume for larger vessels.
- Other mapping includes avg. vessel time in aliquot, avg. speed, etc.

Filtering by Date to Remove Duplicate Returns



AIS Vessel Traffic - All Vessel Types 2009

