



DoD assessment of offshore military activities and wind energy development on the Outer Continental Shelf off New York

Fred Engle
ODASD - Readiness
Office of the Secretary of Defense

frederick.Engle@osd.mil

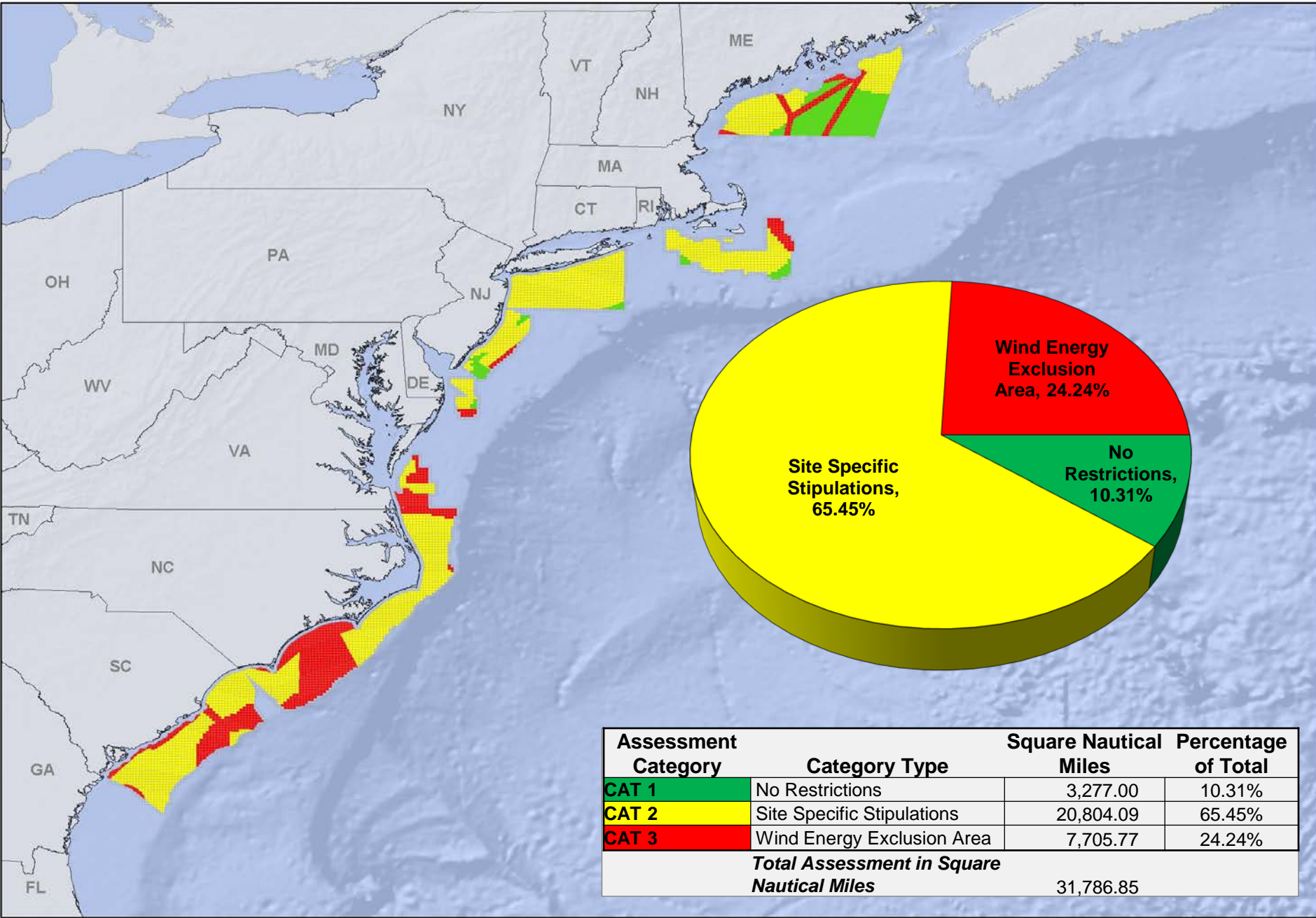
703-693-3478



Methodology

- **Categorize DoD offshore equities and potential wind energy development using:**
 - 1. Unrestricted**
 - 2. Site Specific Stipulations**
 - 3. Wind Energy Exclusion Area**
- **DoD Operating Areas (OPAREAs), warning areas, and radar line-of-sight ranges overlaid on BOEM lease block grid**
- **Extensive analysis and coordination process with the military services**

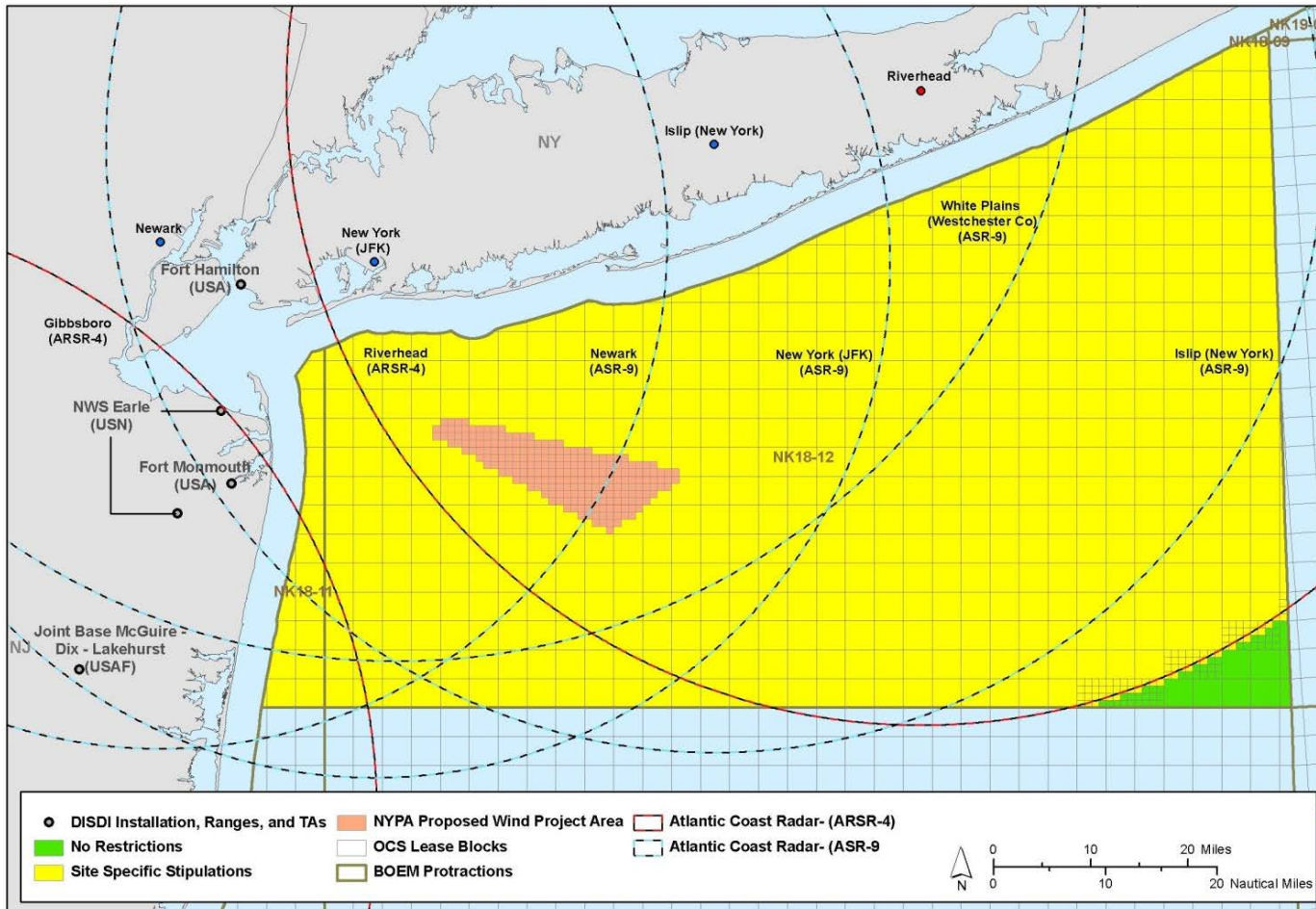
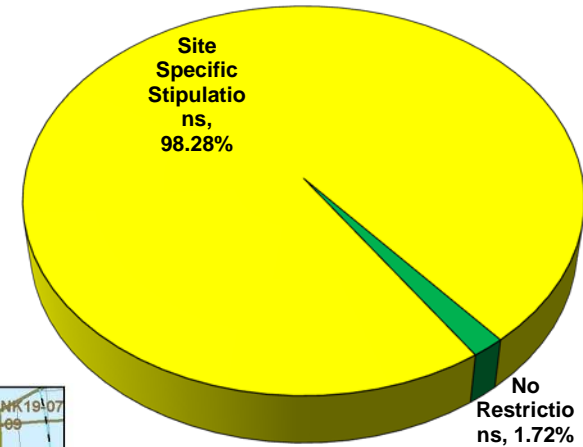
DoD Atlantic Outer Continental Shelf Wind Energy Assessment Summary



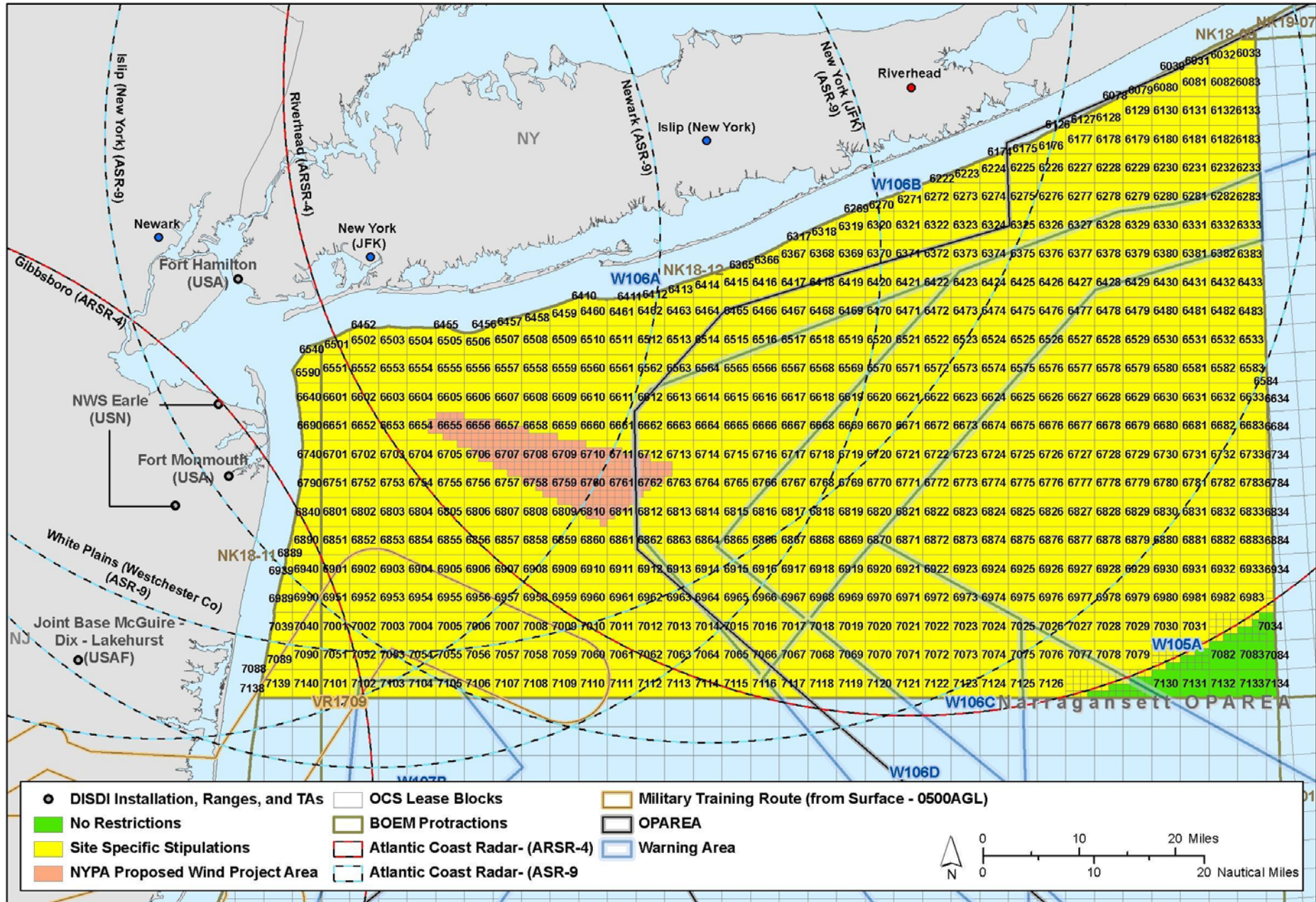
Assessment Category	Category Type	Square Nautical Miles	Percentage of Total
CAT 1	No Restrictions	3,277.00	10.31%
CAT 2	Site Specific Stipulations	20,804.09	65.45%
CAT 3	Wind Energy Exclusion Area	7,705.77	24.24%
Total Assessment in Square Nautical Miles		31,786.85	

DoD New York Outer Continental Shelf Wind Energy Assessment

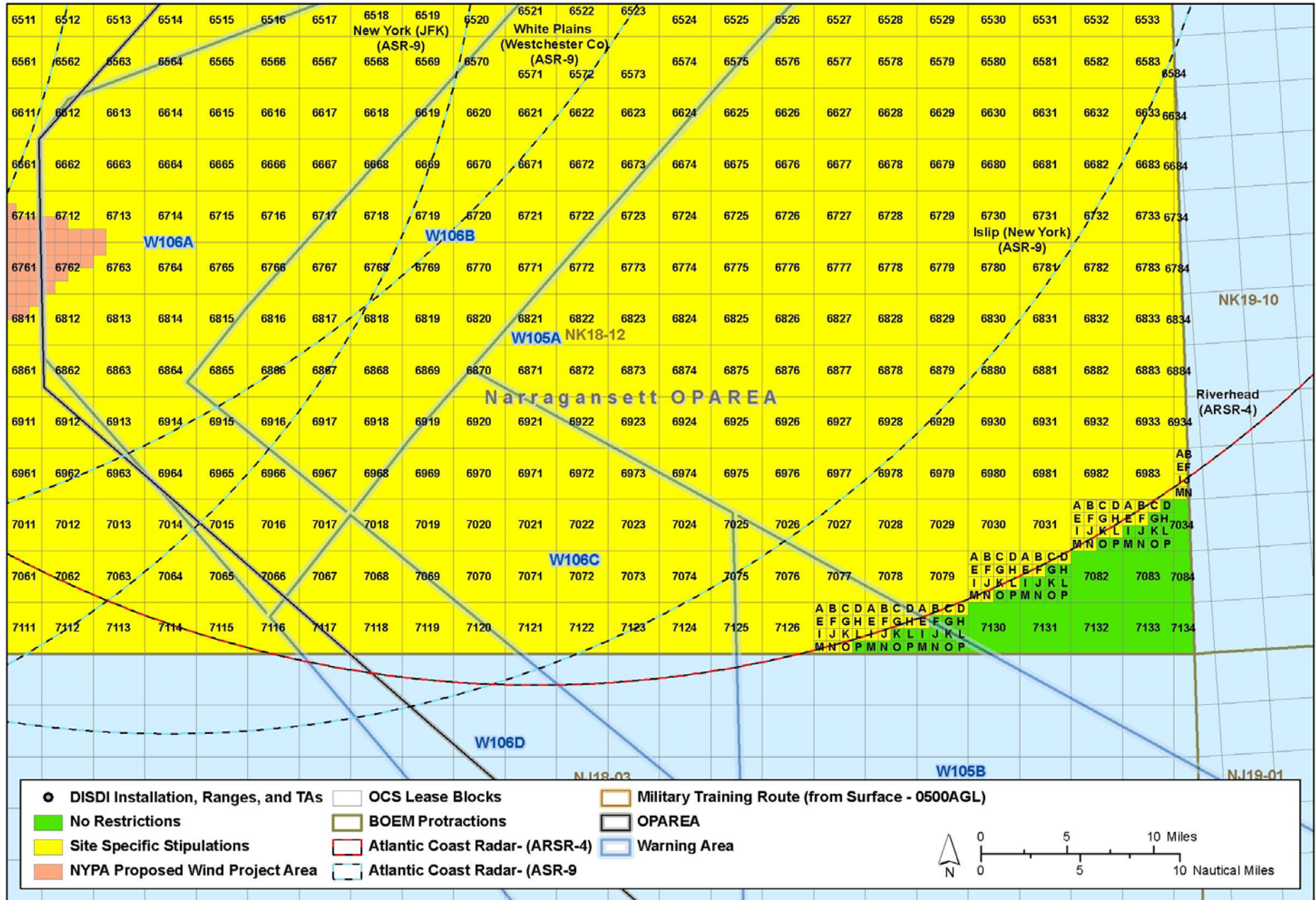
OCS New York Wind Energy Assessment			
Category	Category Type	Square Nautical Miles	Percentage of Total
CAT 1	No Restrictions	65.41	1.72%
CAT 2	Site Specific Stipulations	3,739.12	98.28%
CAT 3	Wind Energy Exclusion Area	0.00	0.00%
Total Assessment Square Nautical Miles		3,804.53	



DoD New York Outer Continental Shelf Wind Energy Assessment



DoD New York Outer Continental Shelf Wind Energy Assessment



DISDI Installation, Ranges, and TAs	OCS Lease Blocks	Military Training Route (from Surface - 0500AGL)
No Restrictions	BOEM Protractions	OPAREA
Site Specific Stipulations	Atlantic Coast Radar- (ARSR-4)	Warning Area
NYPA Proposed Wind Project Area	Atlantic Coast Radar- (ASR-9)	

