

# **BOEM New York Renewable Energy Task Force Meeting**

*Unsolicited Commercial Lease Request from  
New York Power Authority (NYPA)*

**Plainview, NY  
April 3, 2012**

**Office of Renewable Energy Programs  
Bureau of Ocean Energy Management (BOEM)**

# NYPA's Unsolicited Lease Request

## The Long Island – New York City Offshore Wind Project

- Introduction to NYPA
- General Description of Facilities and Objectives
- The Area Requested for Lease
- General Schedule of Proposed Activities
- Data and Information

# What is NYPA?

- NYPA is a municipal instrumentality and a political subdivision of the State of New York, created in 1931.
- Largest state public power organization.
- NYPA generates, transmits, and sells electric power and energy.
- NYPA owns and operates some 1,400 circuit-miles of transmission lines, 5 major generating facilities, 11 small electric generating facilities, and 5 small hydroelectric facilities, with a total installed capacity of 6,054 megawatts.
- In 2010, the New York Power Authority (NYPA) generated 24.4 billion kilowatt-hours (kwh) of electricity, with hydropower accounting for 82 percent of this amount.
- Provide up to one-quarter of New York's electricity.
- NYPA realized net income for 2010 of \$181 million.

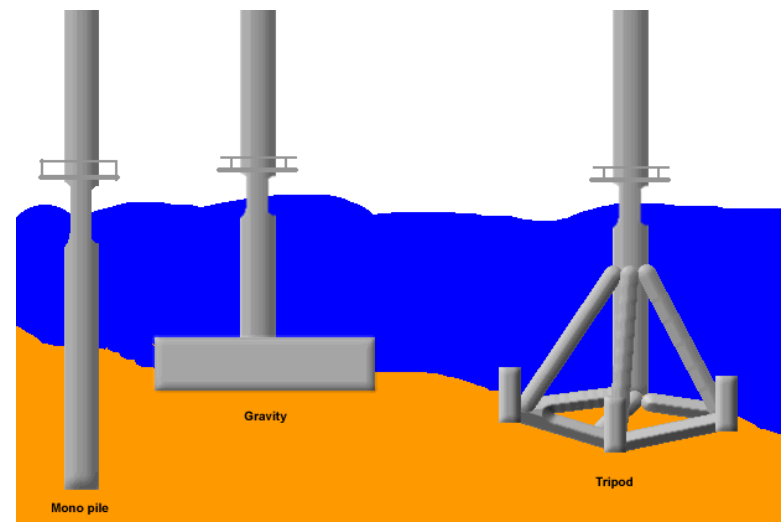
# Long Island-New York City Offshore Wind Collaborative

- The Long Island – New York City Offshore Wind Project is a public-private partnership being advanced by a collaborative that includes Long Island Power Authority, Consolidated Edison of New York and the New York Power Authority.
- Should NYPA be awarded a lease, the Collaborative utility members (LIPA, Con Edison and NYPA) will seek proposals from private development firms to build the project and enter into agreements to purchase the energy produced by the project.



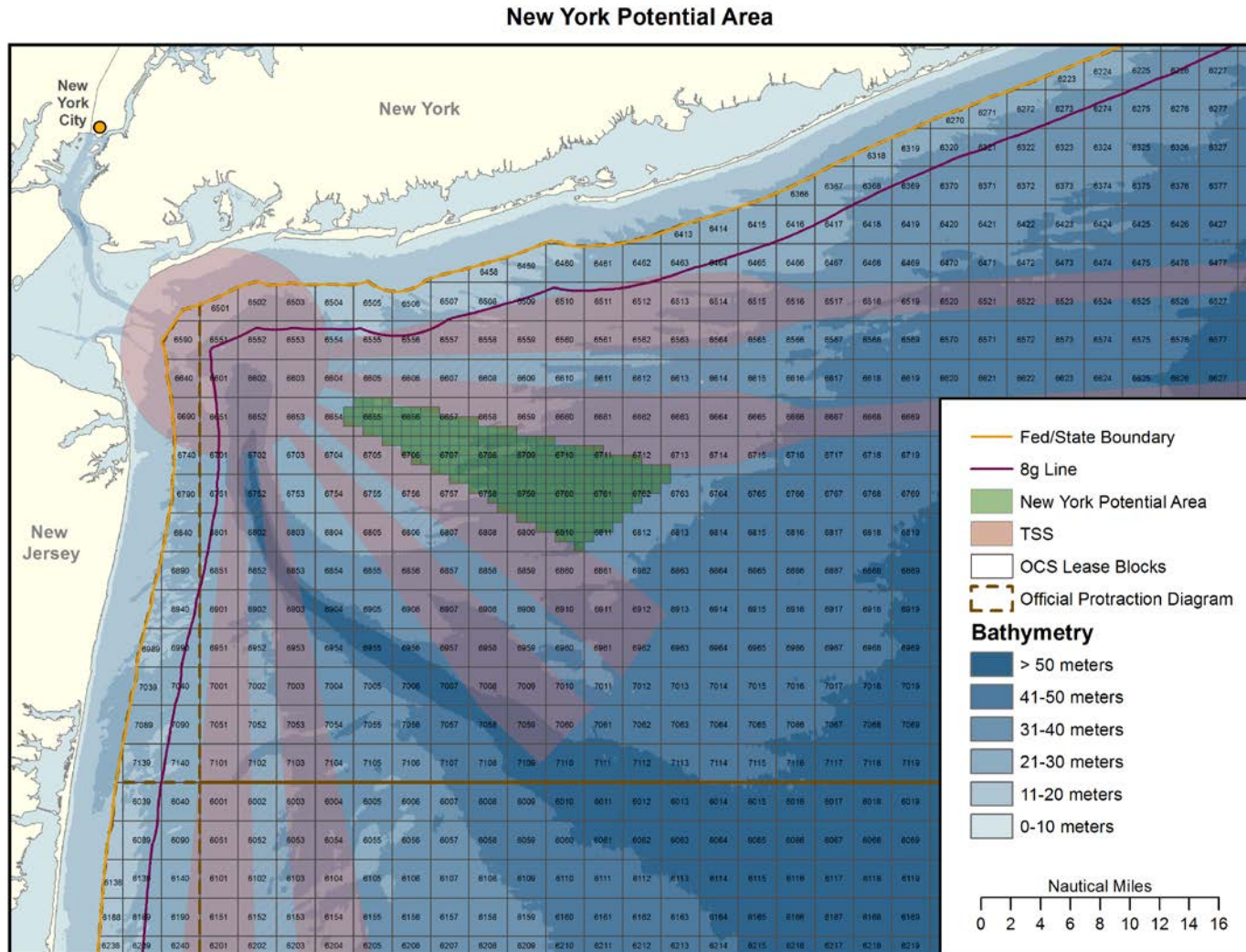
# Description of NYPA's Proposed Project Facilities and Objectives

- Ultimate goal is to obtain a commercial lease leading to the construction of a large offshore wind energy facility.
- 350 MW project with room to expand to 700 MW project.
- 97-194, 3.6 MW turbines. 70-140, 5 MW turbines.
- 120 meter rotor diameter with 10 by 10 rotor diameter spacing between turbines (1.2 kilometers or 0.75 miles).
- Foundations likely to be monopile, jacket and/or gravity based.
- The water depths range between 60 and 125 feet



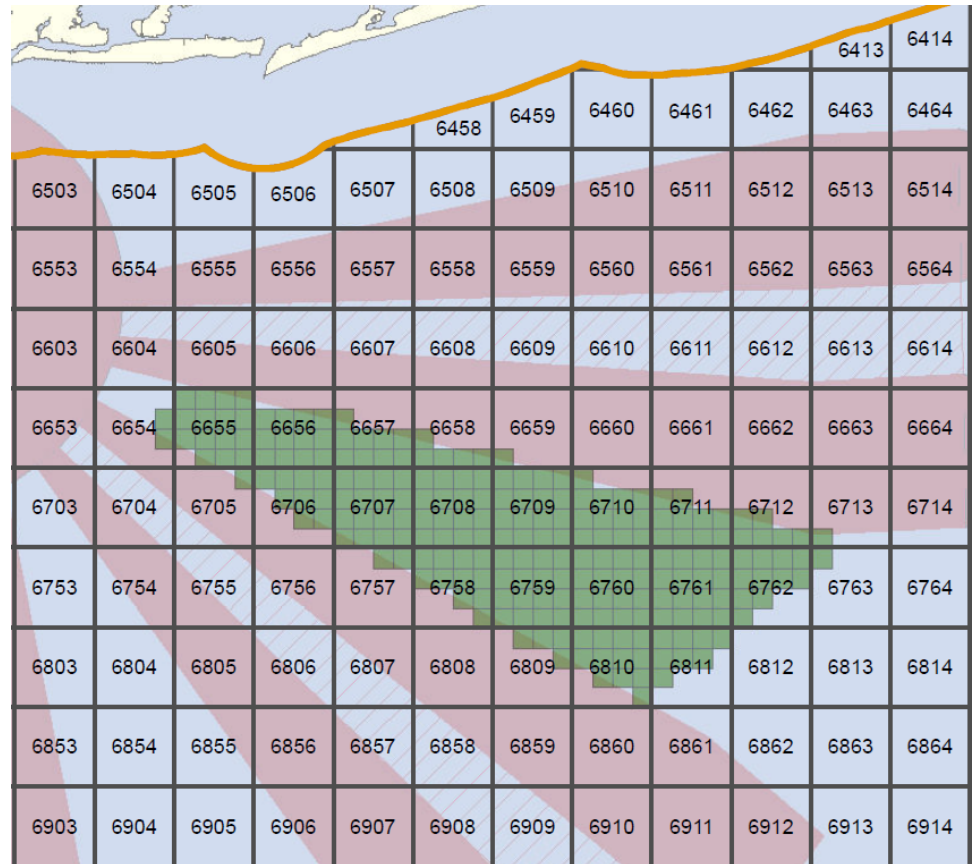
# Area Proposed by NYPA

Location is directionally aligned southwest of the Rockaway Peninsula with its westerly most point approximately 14 nautical miles due south of Nassau County.

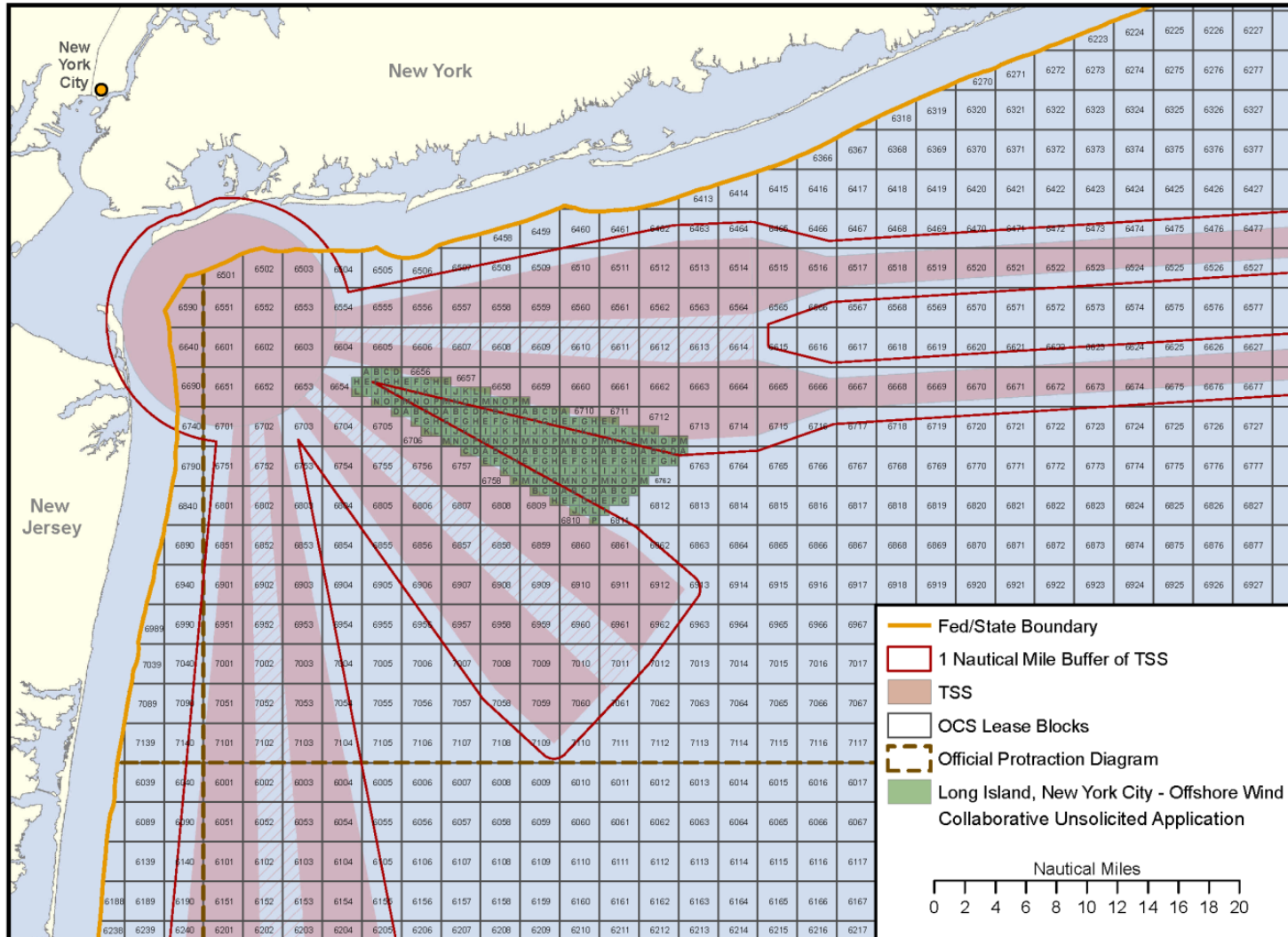


# Lease Area Blocks

- Protraction New York NK 18-12
- 81,486 acres
- Whole or portions of OCS lease blocks 6503, 6504, 6505, 6506, 6507, 6508, 6509, 6510, 6511, 6512, 6513, 6514, 6553, 6554, 6555, 6556, 6557, 6558, 6559, 6560, 6561, 6562, 6563, 6564, 6603, 6604, 6605, 6606, 6607, 6608, 6609, 6610, 6611, 6612, 6613, 6614, 6653, 6654, 6655, 6656, 6657, 6658, 6659, 6660, 6661, 6662, 6663, 6664, 6703, 6704, 6705, 6706, 6707, 6708, 6709, 6710, 6711, 6712, 6713, 6714, 6753, 6754, 6755, 6756, 6757, 6758, 6759, 6760, 6761, 6762, 6763, 6764, 6803, 6804, 6805, 6806, 6807, 6808, 6809, 6810, 6811, 6853, 6854, 6855, 6856, 6857, 6858, 6859, 6860, 6861, 6862, 6863, 6864, 6903, 6904, 6905, 6906, 6907, 6908, 6909, 6910, 6911, 6912, 6913, 6914

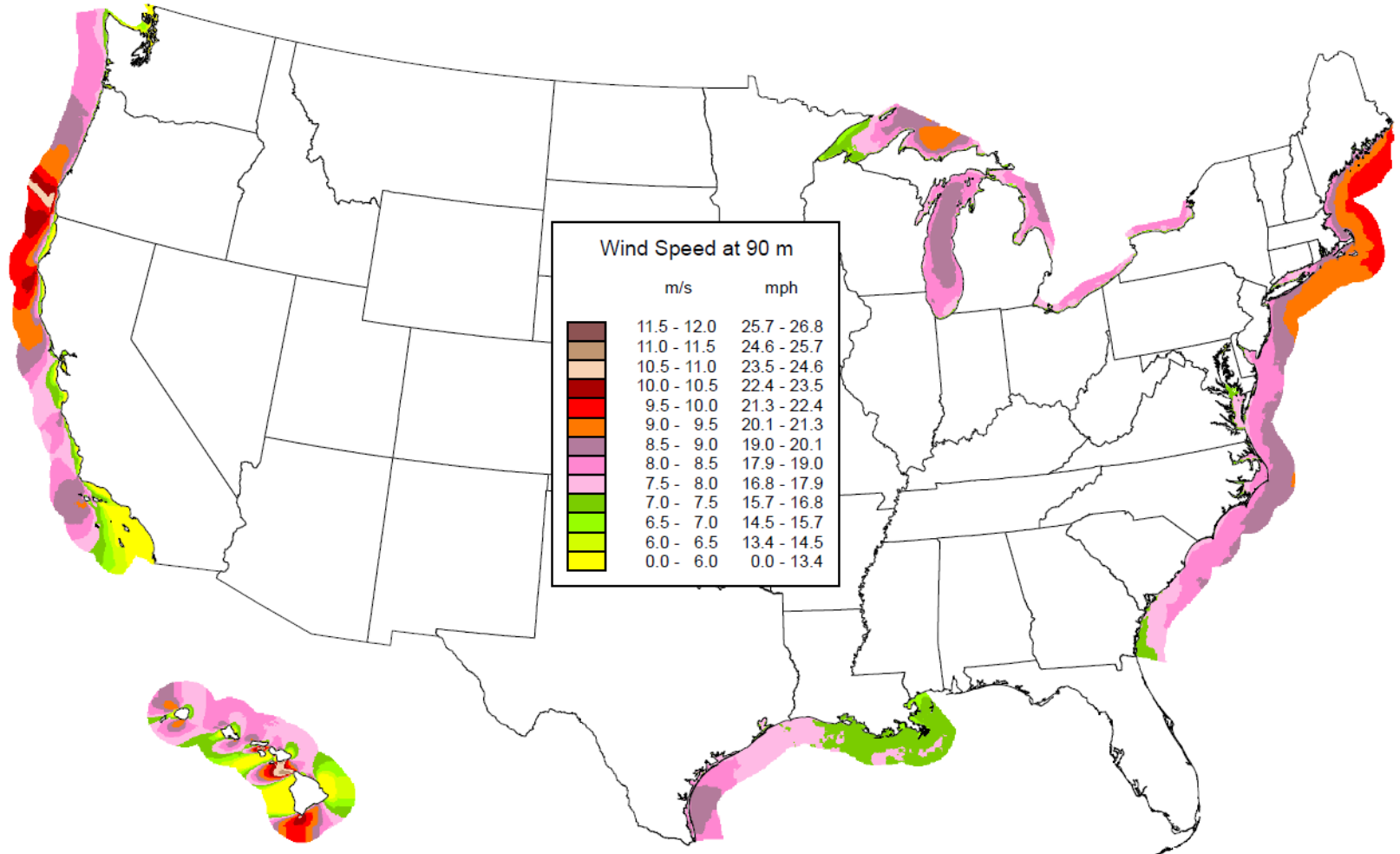


# 1 nautical mile buffer





# United States - Annual Average Offshore Wind Speed at 90 m

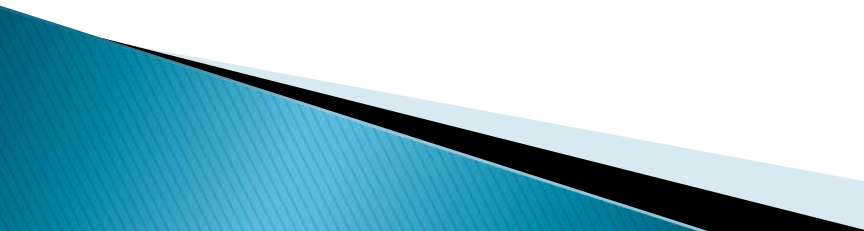


# AWS Truepower *WindTrends* Data Set

- ▶ Reference height of 90 m.
- ▶ Predicted mean wind speed of 8.8 m/s (19.7 mph) in project area.
- ▶ Seasonally, strongest average winds occur during winter and early spring, with weakest winds in summer.
- ▶ Prevailing winds:
  - Spring and summer= south and southwest
  - Fall and winter= west and northwest

# General Schedule of NYPA's Proposed Activities

## Milestones accomplished:

- **September 2011**—NYPA submitted unsolicited request for commercial lease
  - **December 2011**—NYPA legally qualified to be renewable energy leaseholder on the OCS.
  - **March 2012**—NYPA financially and technically qualified to be renewable energy leaseholder on the OCS.
  - **April 3 2012**—Task Force Meeting to discuss NYPA proposal.
- 

# General Schedule of NYPA's Proposed Activities

The following timelines are subject to BOEM's regulatory process and task force deliberation

- **Summer 2012**—BOEM publishes **Request for Competitive Interest**; public comment period.
- **Fall 2012**—**Determination** of Competitive Interest/No Competitive Interest. If noncompetitive determination is rendered, NYPA has 60 days to submit a **Site Assessment Plan (SAP)**.
- **Fall 2012**—Publish **Notice of Intent** to prepare an EA, and begin NEPA analysis to cover lease issuance and site characterization studies [EA under “Smart from the Start” initiative].

# General Schedule of NYPA's Proposed Activities

The following timelines are subject to BOEM's regulatory process and task force deliberation

- **End 2013/Beginning 2014**—Issue **Lease**, begin 5-year Site Assessment Term.
- **2014/2015**—Developer conducts selected site assessment activities and/or site characterization studies.
- **2015/2016**—Developer submits **Construction and Operations Plan (COP)**. BOEM initiates NEPA analysis [EIS].
- **2017**—BOEM makes decision on COP.
- **2017-2018**—Construction commences.
- **2018**— Commercial operations.

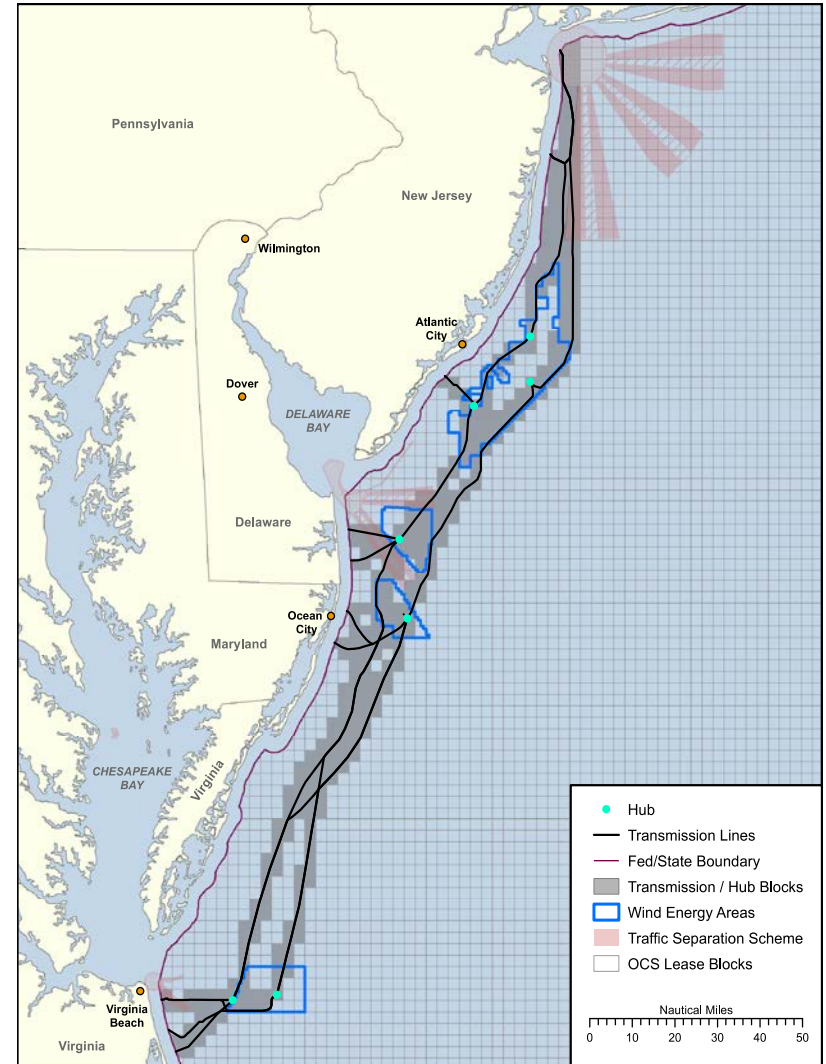
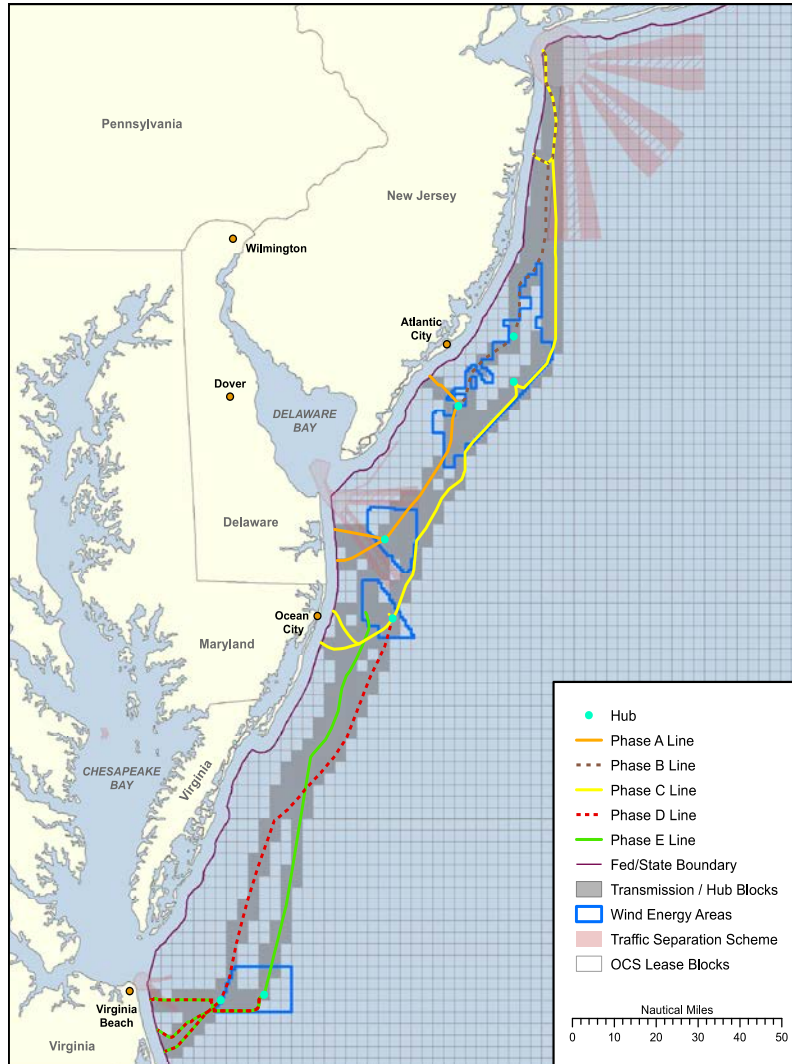
# Data and Information To-Date

- Interconnection Feasibility Studies (Con Ed and LIPA)
- Fatal Flaw Assessment (AWS Truewind)
- Pre-Development Physical and Environmental Assessment (NYSERDA/AWS Truepower)
- Wind Energy Assessment (NYSERDA/AWS Truepower)
- Economic Impact and Port Availability Assessment (AWS Truepower)
- Developer will conduct further studies to provide sufficient data for BOEM environmental reviews and NEPA compliance, such as high resolution geophysical and geological surveys, geotechnical surveys, archaeological surveys, biological and benthic habitat surveys, etc.

**1. Questions?**

**2. Update on Atlantic Wind Connect...**

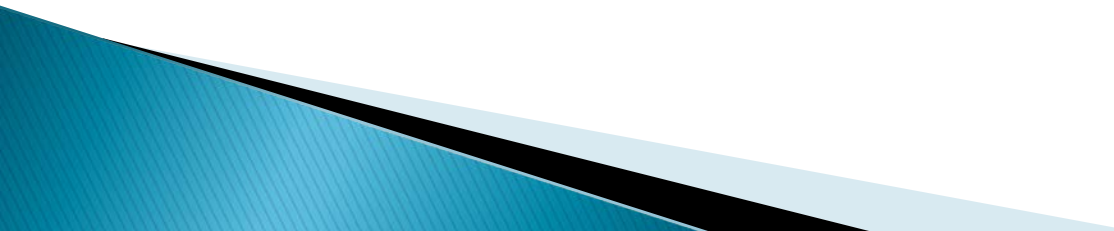
# The Atlantic Wind Connection



- Atlantic Grid Holdings LLC (AGH) is the applicant.
- Seeking a grant to construct an offshore transmission line in 5 phases, lettered A-E.



# AWC Current status

- Competition requirement in EPA Act Section 388 requires the Secretary to determine competitive interest.
  - A Request for Competitive Interest (RFCI) was published in the Federal Register December 21, 2011 the comment period ended February 21, 2012.
  - 58 comments were received on the proposal and the area under consideration.
- 

# What's next for the New York Task Force on the AWC?

- A multi-state task force will be scheduled with all effected states once a determination is made by BOEM regarding competitive interest.
- Federal agencies are required to prepare an environmental analysis for any major federal action.
- BOEM anticipates an Environmental Impact Statement would likely be necessary for this project, in the event a grant is issued.
- If BOEM follows its non-competitive procedures, the analysis would address both the issuance of the grant and the effects of the project.
- If BOEM follows its competitive procedures, two analyses would be required—one that addresses the grant issuance, and another that would address the effects of the project.
- New BOEM Project Manager; Casey Reeves [casey.reeves@boem.gov](mailto:casey.reeves@boem.gov)

# Thank You!

Dr. Andrew Krueger  
Project Coordinator

Andrew.Krueger@boem.gov  
703-787-1554



**Montauk Point Lighthouse**  
Long Island, NY  
Built 1796