



Atlantic OCS Region

OCS Scientific Committee Meeting May 13, 2014

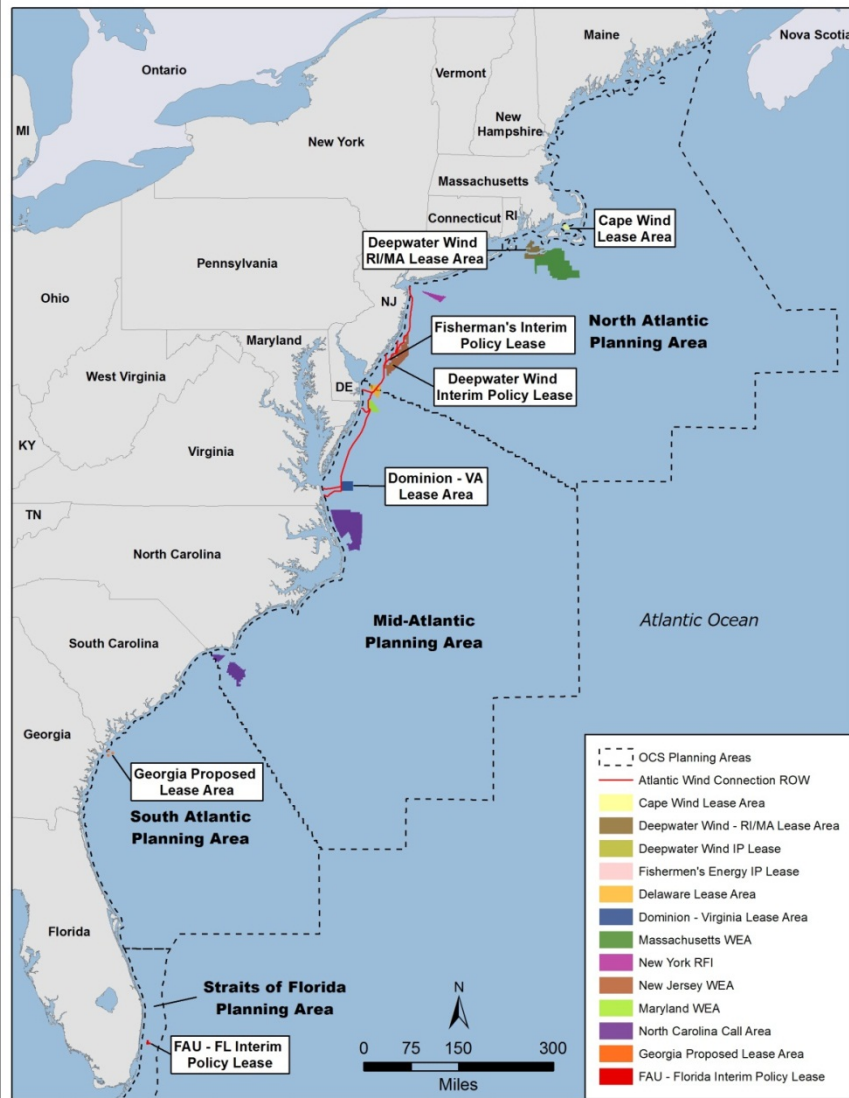
**Mary C. Boatman, Ph.D.
Environmental Studies Chief
Office of Renewable Energy Programs**



- Oil and Gas Program
- Marine Minerals Program
- Renewable Energy Program

Geological and Geophysical Programmatic Environmental Impact Statement

- Final EIS Published in March 2014
- Record of Decision in preparation
- Proposes mitigation measures for deep penetration seismic
- Examines geophysical surveys for Renewable and Marine Mineral Programs



Wind Energy/Call Areas:

**Delaware
Rhode Island
Virginia
Massachusetts
New Jersey
Maryland
North Carolina
New York
South Carolina***

Interim Policy Leases:

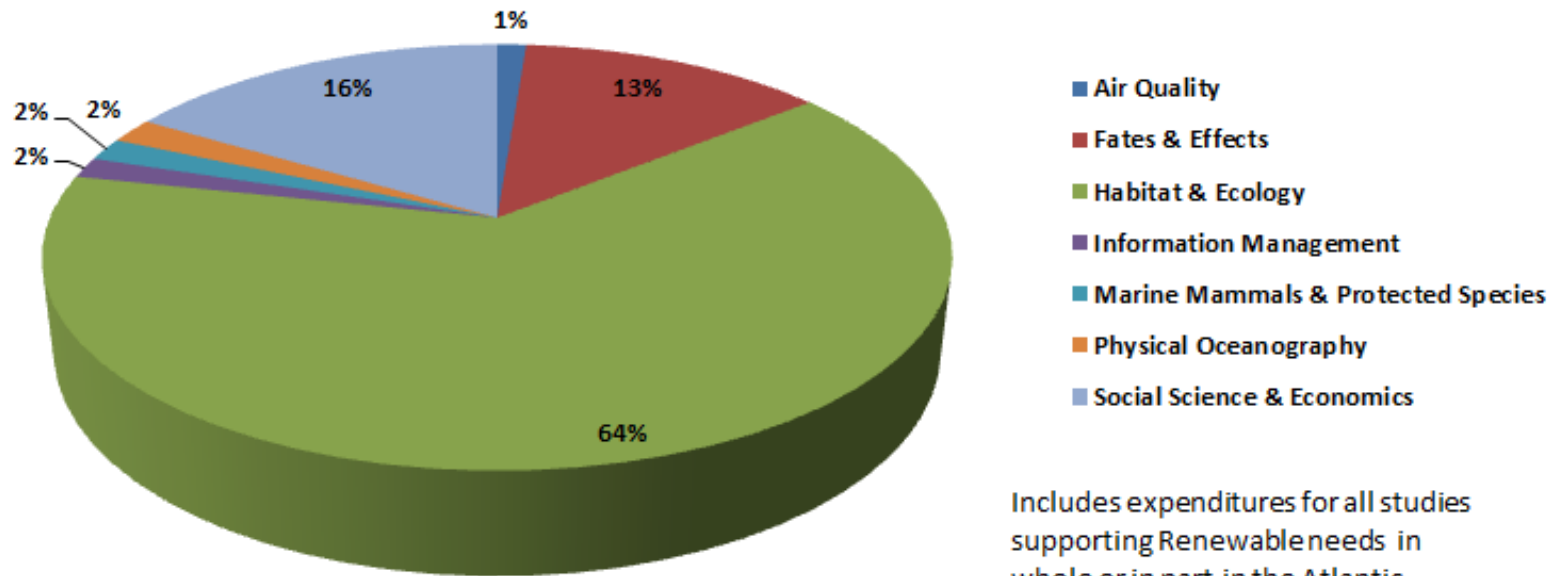
**New Jersey
Georgia
Florida**

Specific Projects:

**Cape Wind Energy Project
Atlantic Wind Connection**

~ \$26M with the following distribution:

**Atlantic Coast Renewable Funds by Discipline
FY 2010-2014 Cumulative**



Stakeholder Input:

- Task Force Membership ~ 600
- Stakeholder List
- Received 40 study ideas
- 10 profiles included in the plan

What's out there?

species present

Where and how many?

distribution and abundance

What are they doing?

breeding, feeding, migrating

What are the effects?

disturbance, displacement, death

What's out there?

Cetacean and Turtle Assessment
Program

Compendium of Avian Knowledge

National Marine Fisheries Service

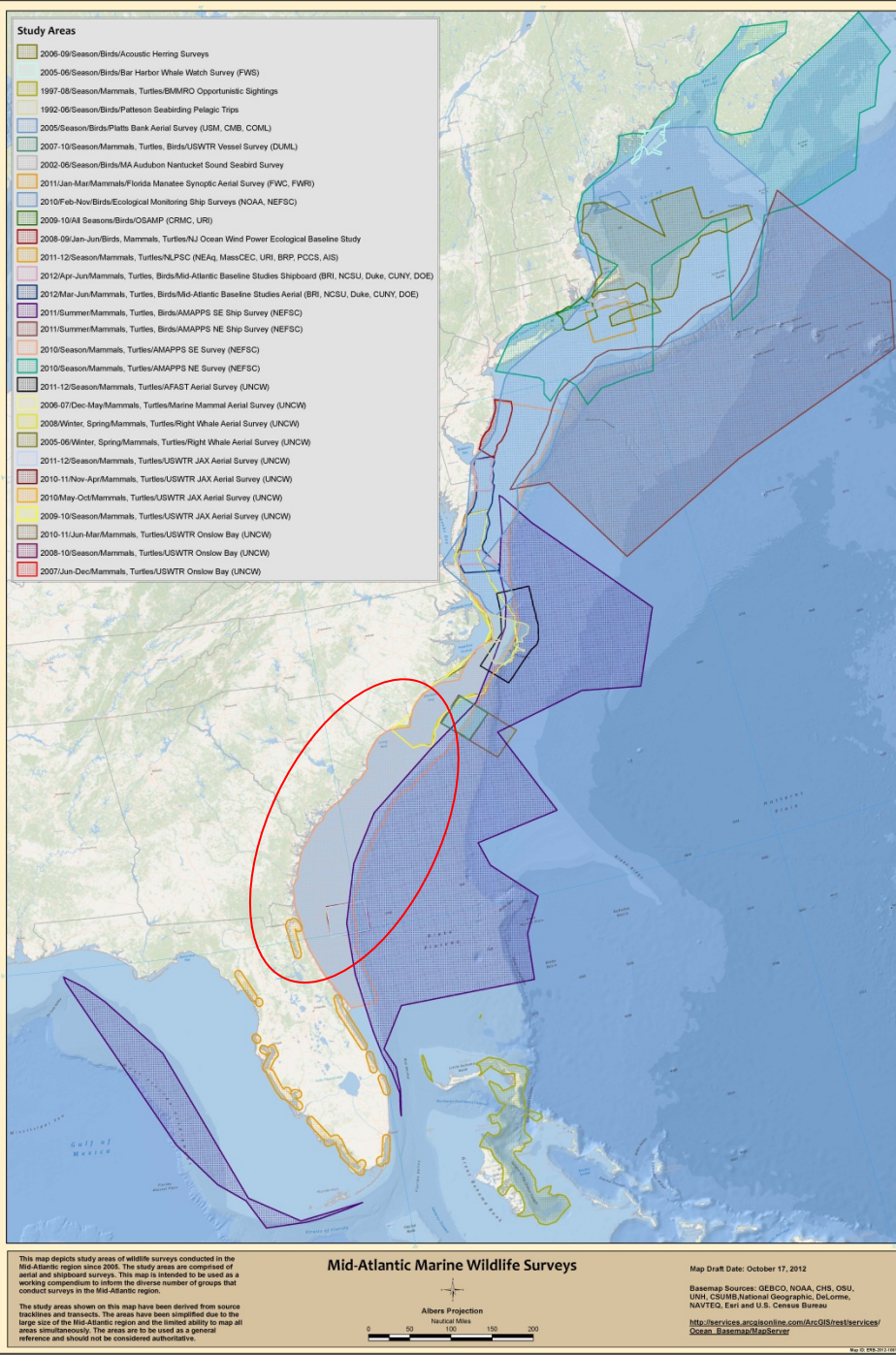
ogy/Ecology

Where and how many?

Aerial and Boat Surveys

Good Density in the North

Gaps in the South Atlantic

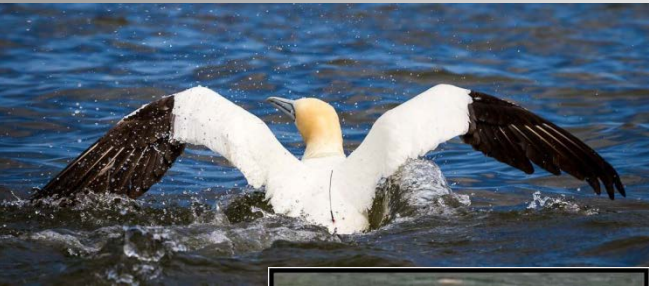


What are they doing and when?

Telemetry – tagging and tracking

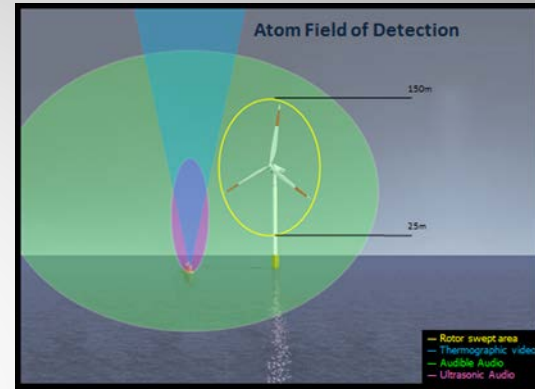
Acoustic Monitoring

Telemetry – tagging and tracking



Acoustic Monitoring

Passive Acoustic Array

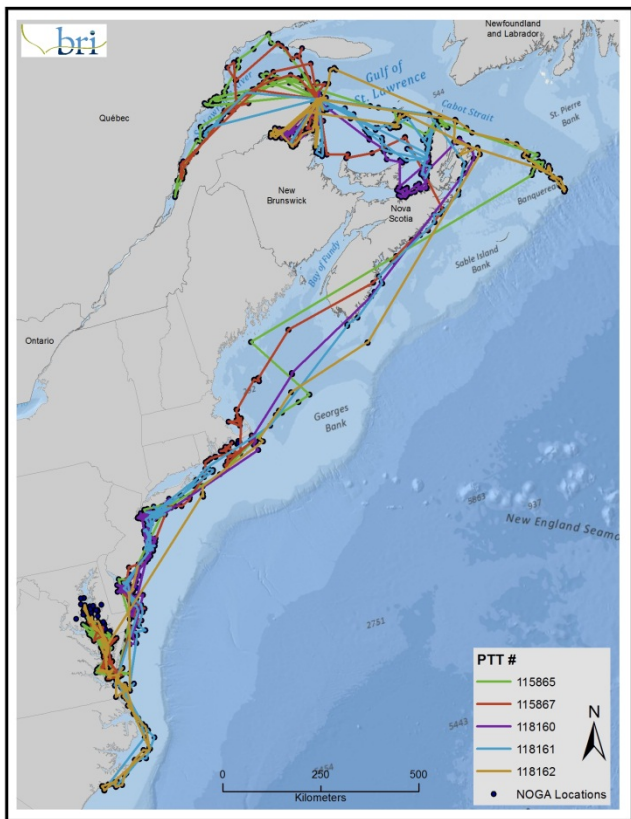


Acoustic and Thermal Imaging

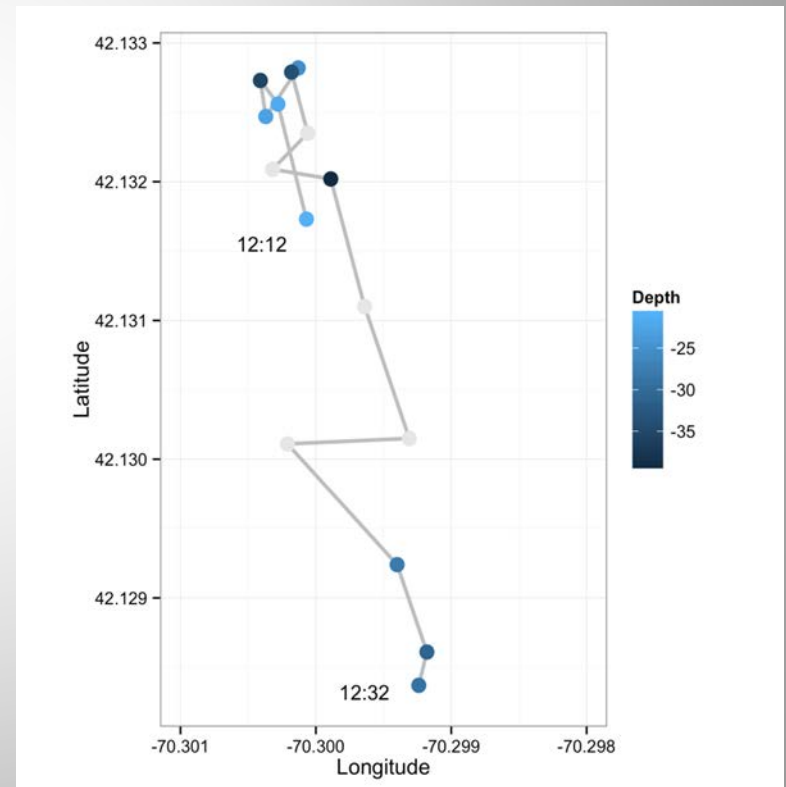


Marine Acoustic Recording Units

Northern Gannett Tracking



3 dimensional tracking of NARW and beaked whales



What are the effects?

Effects of lighting schemes

Electromagnetic Fields

Sound from Pile Driving

Collected baseline information about:

Tourism and Recreation

Historical Properties

Archaeological Sites

Focused studies:

Effects on under represented communities

Economic effects on fishing

Attitudes towards offshore wind

Improved methods for identifying submerged cultural landscapes

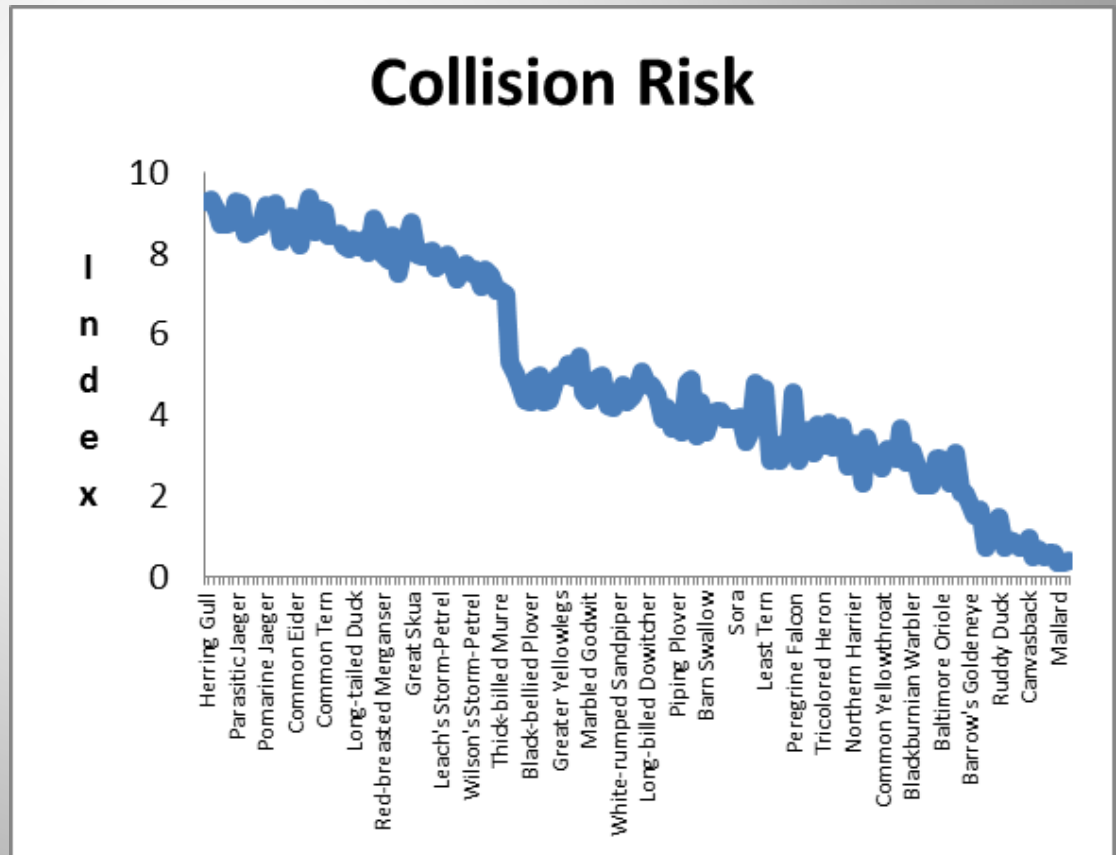
Building a Database to Assess the Relative Vulnerability of Migratory Bird Species to Offshore Renewable Energy Projects on the Atlantic OCS

Vulnerability Ranks

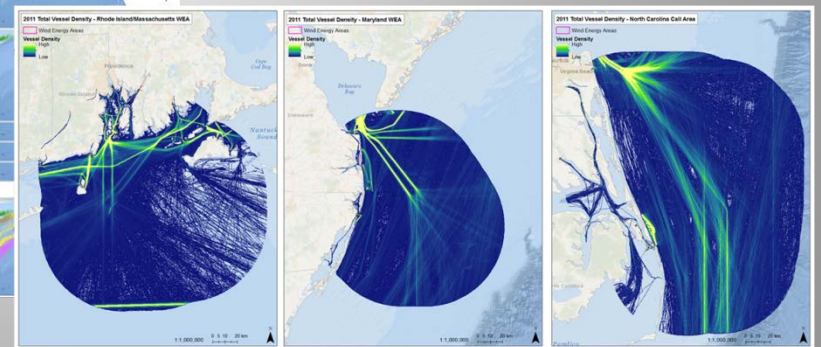
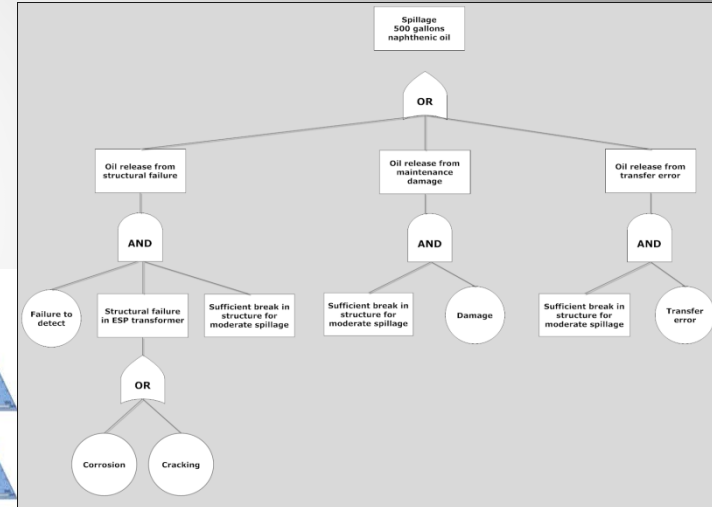
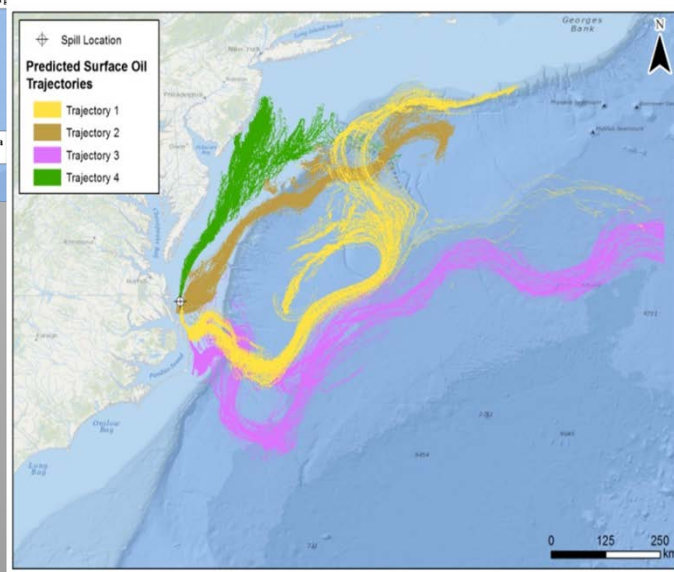
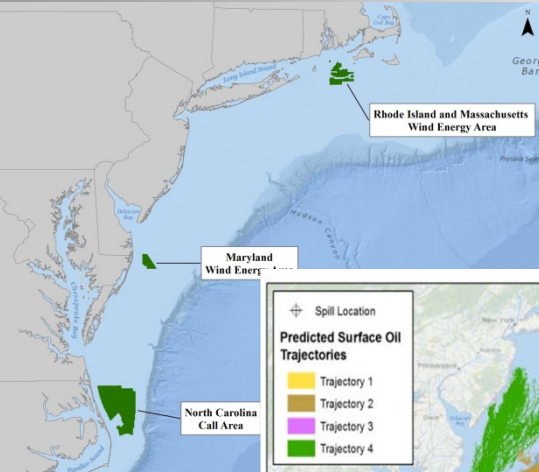
177 species

61 collision

27 displacement



Environmental Risks, Fate and Effects of Chemicals Associated with Wind Turbines on the Atlantic Outer Continental Shelf



Evaluation of Lighting Schemes for Offshore Wind Facilities and Impacts to Local Environments

Information Synthesis on the Potential for Bat Interactions with Offshore Wind Facilities

www.boem.gov/Renewable-Energy-Completed-Studies/

Questions?

www.boem.gov/Renewable-Energy-Program