

Carol Fairfield

Marine Ecologist
Marine Mammal Specialist

Alaska OCS Region

carol.fairfield@boem.gov

(907)334-5284



Page Number	Discipline	Ranking	Study Title
231	PO	1	Development of a Very High-resolution Regional Circulation Model of Beaufort Sea Nearshore Areas
233	IM	2	Coastal Habitat Maps: Closing Spatial Gaps in ShoreZone Imagery and Data for the Cook Inlet Area
235	PO / SE	3	Synthesis of Sub-Seabed Physical Environmental Data for the Beaufort and Chukchi Seas
237	IM	4	Support for the Canada-United States Northern Oil and Gas Research Forum, 2014
239	SE	5	Traditional Knowledge Implementation: Accessing Arctic Community Panels of Subject Matter Experts
241	HE	6	Monitoring Fish in Chukchi and Beaufort Sea Lagoons and Nearshore Zones
243	MM	7	Estimation of Abundance and Demographic Rates of Pacific Walruses Using a Genetics-based Mark-Recapture Approach
245	MM	8	Field Evaluation of an Unmanned Aircraft System (UAS) for Studying Cetacean Distribution, Density, and Habitat Use in the Arctic
247	HE	9	Subtidal and Intertidal Habitats and Invertebrate Biota in Lower Cook Inlet, Alaska
249	MM	10	Cetacean Distribution, Abundance, and Ecology in Cook Inlet
253	IM	11	Alternative Energy Capacity Inventory in Coastal Alaska
255	MM	12	Habitat Use, Ecology, and Population Status of Polar Bears in the Chukchi Sea

Discipline Codes

AQ = Air Quality

IM = Information Management

PO = Physical Oceanography

FE = Fates & Effects

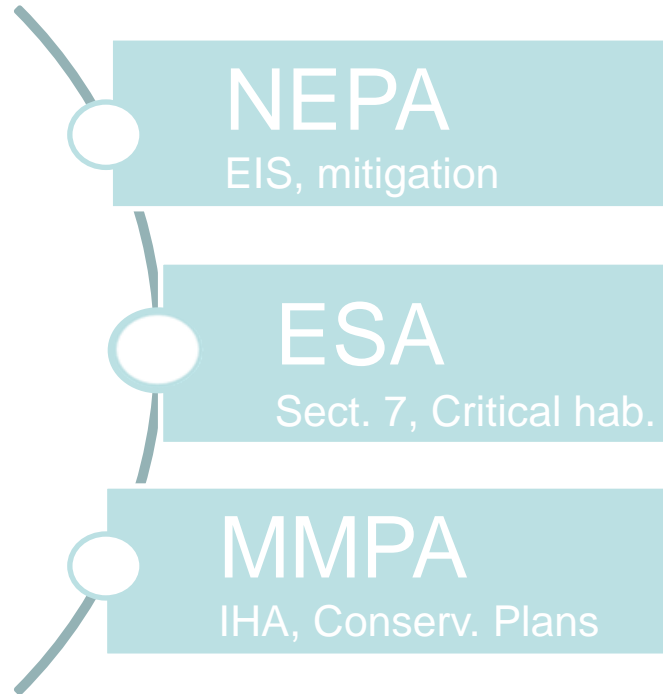
MM = Marine Mammals & Protected Species

SE = Social & Economic Sciences

HE = Habitat & Ecology



BOEM Information Need:



Update seasonal whale habitat use
Mid/Lower Cook Inlet
Forelands S. to Barren & Shuyak Islands, N. Shelikof Straits

Date Information is Required: Preliminary results 2016

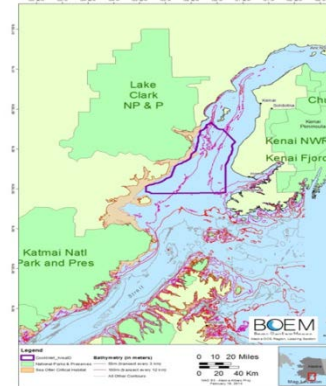
Alaska OCS Region

Tentative Ranking: 10

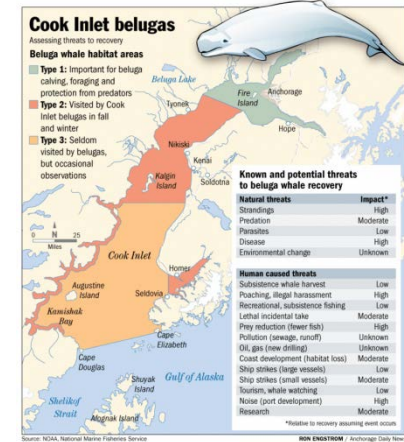
Background: Relationship with Previous/Current Work

Temporal-spatial expansion of coastal monitoring

- ❖ NMFS beluga surveys
- ❖ Southward expansion acoustic moorings
- ❖ USFWS sea otter monitoring



USGS Sea Otter Monitoring occurs at Katmai & Kenai Fjords Nat. Parks once every 2-3 years since 2002.



- ❖ Extend humpback & killer whale Gulf of AK research

Study Objectives:

- ❖ Document cetacean relative abundance over 3 years
- ❖ Identify spatial, temporal, & functional habitat use
- ❖ Explore relationships between whales, prey & oceanography
- ❖ Estimate overlap between CI & nearby feeding areas



Alaska OCS Region



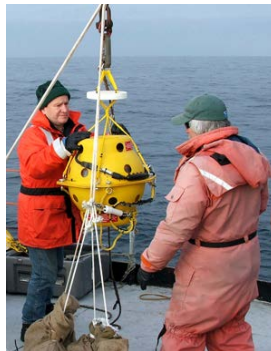
Tentative Ranking: 10

Study Methods:

- ❖ Aerial/ship surveys to document habitat use
- ❖ Deploy moorings to monitor whales/environment
 - ❖ Acoustics, physical oceanography
- ❖ Conduct fine-scale movement & feeding behavior
 - ❖ Visual Observations
 - ❖ Tagging – short- & long-term term
 - ❖ Biopsies – genetics, stable isotope, fatty acids



Alaska OCS Region



Tentative Ranking: 10

Questions or comments?



Alaska OCS Region

Tentative Ranking: 10