

**Carol Fairfield**  
**Marine Ecologist**  
**Alaska OCS Region**



**carol.fairfield@boem.gov**  
**(907)334-5284**

**Chris Campbell**  
**Sociocultural Specialist**  
**Alaska OCS Region**



**chris.campbell@boem.gov**  
**(907)334-5264**



Page Number	Discipline	Ranking	Study Title
231	PO	1	Development of a Very High-resolution Regional Circulation Model of Beaufort Sea Nearshore Areas
233	IM	2	Coastal Habitat Maps: Closing Spatial Gaps in ShoreZone Imagery and Data for the Cook Inlet Area
235	PO / SE	3	Synthesis of Sub-Seabed Physical Environmental Data for the Beaufort and Chukchi Seas
237	IM	4	Support for the Canada-United States Northern Oil and Gas Research Forum, 2014
239	SE	5	Traditional Knowledge Implementation: Accessing Arctic Community Panels of Subject Matter Experts
241	HE	6	Monitoring Fish in Chukchi and Beaufort Sea Lagoons and Nearshore Zones
243	MM	7	Estimation of Abundance and Demographic Rates of Pacific Walruses Using a Genetics-based Mark-Recapture Approach
245	MM	8	Field Evaluation of an Unmanned Aircraft System (UAS) for Studying Cetacean Distribution, Density, and Habitat Use in the Arctic
247	HE	9	Subtidal and Intertidal Habitats and Invertebrate Biota in Lower Cook Inlet, Alaska
249	MM	10	Cetacean Distribution, Abundance, and Ecology in Cook Inlet
253	IM	11	Alternative Energy Capacity Inventory in Coastal Alaska
255	MM	12	Habitat Use, Ecology, and Population Status of Polar Bears in the Chukchi Sea

**Discipline Codes**

AQ = Air Quality

IM = Information Management

PO = Physical Oceanography

FE = Fates & Effects

MM = Marine Mammals & Protected Species

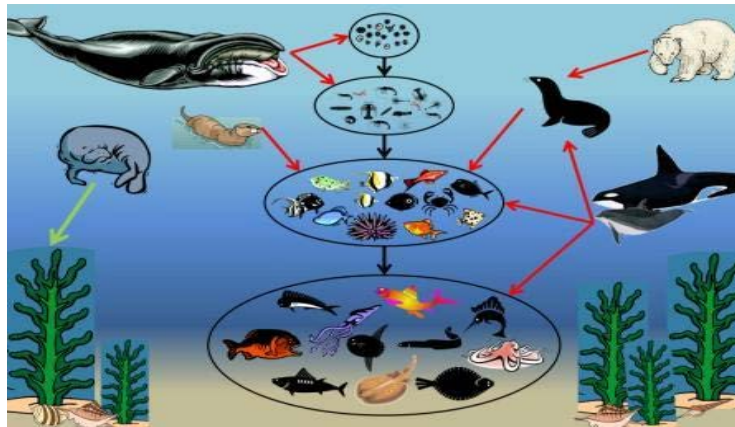
SE = Social & Economic Sciences

HE = Habitat & Ecology



**BOEM Information Need:**

- Paucity of recent info on these habitats
- Important prey for marine/terrestrial mammals, birds, humans
- Susceptible to oil spills with cascading ecosystem effects
- Info needed for Proposed Lease Sale 244 NEPA analyses

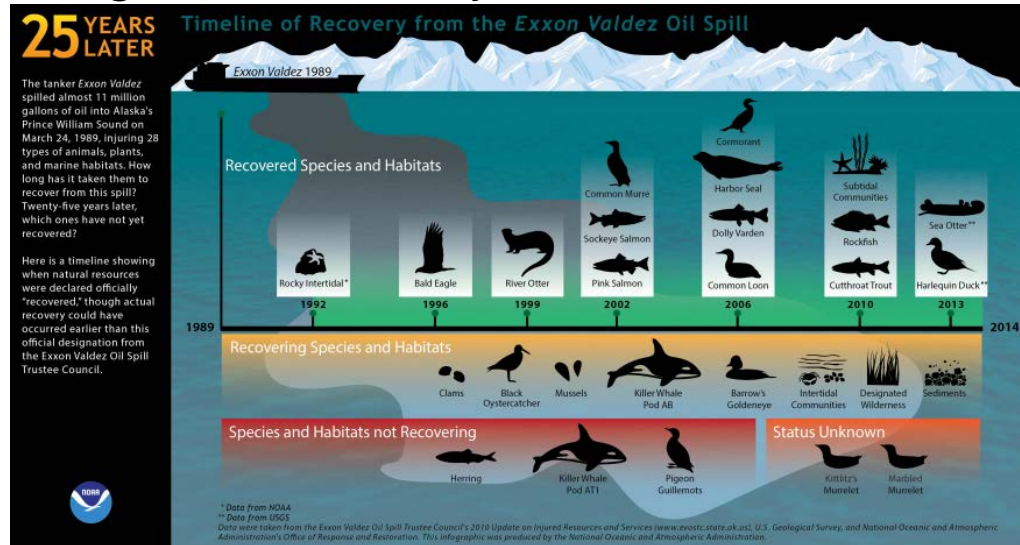


**Date Information is Required:** Interim available 2016

## Background:

### A) Relationship with Previous Work

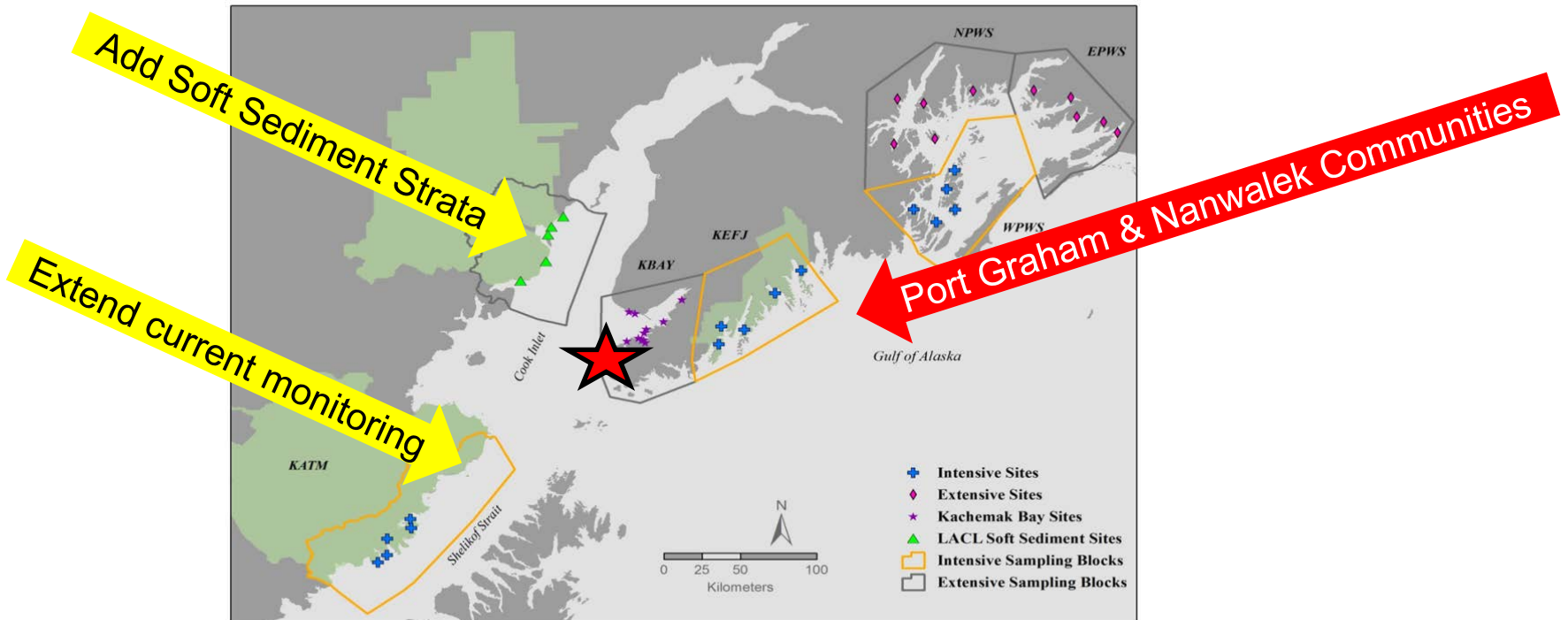
- 1970-80's OCSEAP CI studies
- NOAA's Rocky intertidal study in Kachemak Bay 1999-2012
- AK ShoreZone Aerial Mapping
- Cook Inlet Regional Advisory Council (shellfish/sediment monitoring)



## Background:

### B) Relationship with Current Work

Gulf Watch Alaska & NPS Inventory & Monitoring



Alaska OCS Region

Tentative Ranking: 9

## **Study Objectives:**

- Use existing data to quantify habitat strata in lower CI
  - ShoreZone imagery & existing data
- Sample intertidal & shallow subtidal biota in key habitats
- Develop PAH monitoring program w/ local communities
  - Use bivalves as sentinel species (mussels, badarkis, clams)



**Alaska OCS Region**



**Tentative Ranking: 9**

## **Study Methods:**

- Conduct sampling for habitat & invertebrates
  - Across habitat types (intertidal, rock ramps, reefs)
  - Distribution, Habitat, Density, Productivity
- Produce derived geographical datasets & Maps
  - Multipurpose Marine Cadastre; AOOS CI Response Tool
- Implement Community Monitoring Programs



**Alaska OCS Region**



**Tentative Ranking: 9**