



United States Department of the Interior

BUREAU OF OCEAN ENERGY MANAGEMENT

Alaska OCS Region

3801 Centerpoint Drive, Suite 500

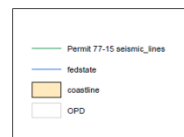
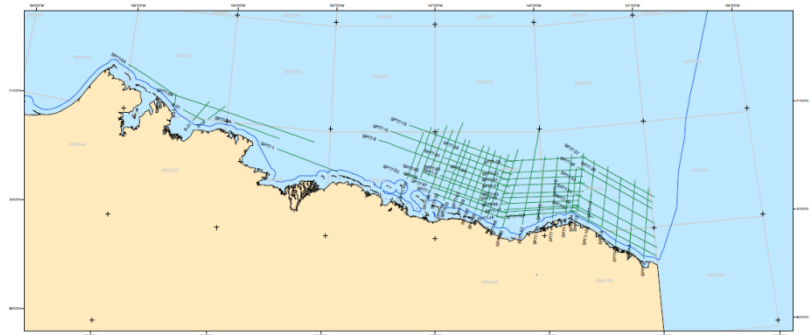
Anchorage, Alaska 99503-5823

Geological or Geophysical Data or Information Announcement of Availability

Outer Continental Shelf Permit 77-15 BEAUFORT SEA - ALASKA

Date: (Updated) February 2015

From August 14, 1977 until September 21, 1977, Geophysical Service, Inc. acquired 3,037 miles of multi-channel seismic reflection data on the outer continental shelf Beaufort Sea area. These data were collected under Permit 77-15 issued by the Minerals Management Service (MMS) on April 15, 1977. Under the conditions of the Permit, acquisition contract, and subsequent regulations, the OCS portions of these data acquired by the MMS (now the Bureau of Ocean Energy Management, BOEM) are now available to the public through the U. S. Geological Survey on the National Archive of Marine Seismic Surveys web site (<http://walrus.wr.usgs.gov/NAMSS/>).



Acquisition Method: The M/V GSI MARINER used a 900 cu. in. airgun array as the energy source. The energy source was suspended from the vessel at a depth of 3.33 m. The M/V GSI MARINER towed one receiver. The cable receiver cable was 2400 m. long with 24 groups of hydrophones. Data was collected at a 4ms. sample rate with a 6 second record length. The streamers were towed at a depth of 20-40 feet.

Navigation: The navigation for this survey was a Shoran IV system.

Processing: A 24-fold stack.

Description of Data or Information:

- The seismic reflection profiles displayed in an automatic gain control format can be supplied as digital (SEG-Y), plastic sepia, paper sepia and/or blackline prints.
- Velocity plots have been scanned and recorded on CD-ROM.
- A navigation map is available as a reproducible or paper copy.

Contact: For further information or expressions of interest in acquiring the data please go to the USGS National Archive of Marine Seismic Surveys web site (<http://walrus.wr.usgs.gov/NAMSS/>) or

Susan Banet
Bureau of Ocean Energy Management
3801 Centerpoint Drive, Suite 500
Anchorage, Alaska 99503
Fax: (907) 334-5322
Phone: (907) 334-5323

Additional data release announcements may be found at <http://www.boem.gov/About-BOEM/BOEM-Regions/Alaska-Region/Resource-Evaluation/Released-Geological-and-Geophysical-Data/Index.aspx>