



United States Department of the Interior

BUREAU OF OCEAN ENERGY MANAGEMENT

Alaska OCS Region

3801 Centerpoint Drive, Suite 500

Anchorage, Alaska 99503-5823

Geological or Geophysical Data or Information Announcement of Availability

Outer Continental Shelf (OCS) Permit 85-49 BEAUFORT SEA - ALASKA

Date: March 2015

Permittee: Western Geophysical Company

Type Data: 2D Marine

Survey Dates: July 22, 1985 to October 3, 1985,

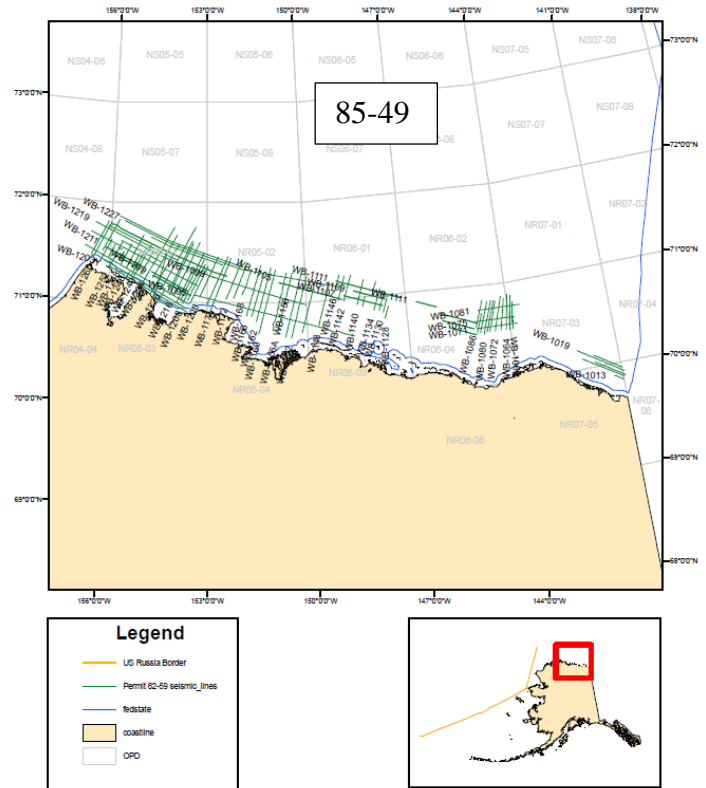
Quantity: Approximately 2,285 miles of multi-channel seismic reflection data on the OCS Beaufort Sea area.

Under the conditions of the Permit, acquisition contract, and subsequent regulations, the OCS portions of these data acquired by the MMS (now the Bureau of Ocean Energy Management, BOEM) are now available to the public through the U. S. Geological Survey on the National Archive of Marine Seismic Surveys web site (<http://walrus.wr.usgs.gov/NAMSS/>).

Energy source: Airguns

Description of Data or Information:

- The seismic reflection profiles in digital (SEG-Y) format
- The seismic reflection profiles (analog) as TIFF images is available upon request
- Velocity data in ASCII text file upon request.
- Navigation in ASCII file, NAD83.



Contact: For further information or expressions of interest in acquiring the data please go to the USGS National Archive of Marine Seismic Surveys web site (<http://walrus.wr.usgs.gov/NAMSS/>) or

Susan Banet
Bureau of Ocean Energy Management
3801 Centerpoint Drive, Suite 500
Anchorage, Alaska 99503
Fax: (907) 334-5322
Phone: (907) 334-5323

Additional data release announcements may be found at <http://www.boem.gov/About-BOEM/BOEM-Regions/Alaska-Region/Resource-Evaluation/Released-Geological-and-Geophysical-Data/Index.aspx>