



BOEM's Offshore Renewable Energy Program

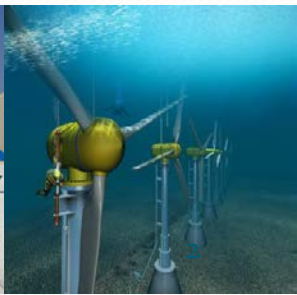
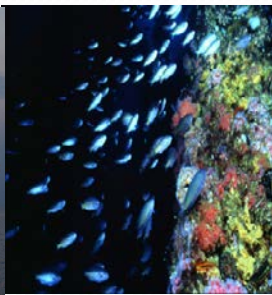
Maureen A. Bornholdt
Program Manager

Office of Renewable Energy Programs
Bureau of Ocean Energy Management



Bureau of Ocean Energy Management

Oversees development of the nation's oil and gas, renewable energy, and other mineral and energy resources on the Outer Continental Shelf



BOEM's Staged Offshore Wind Authorization Process

1 - Planning and Analysis

2 - Leasing

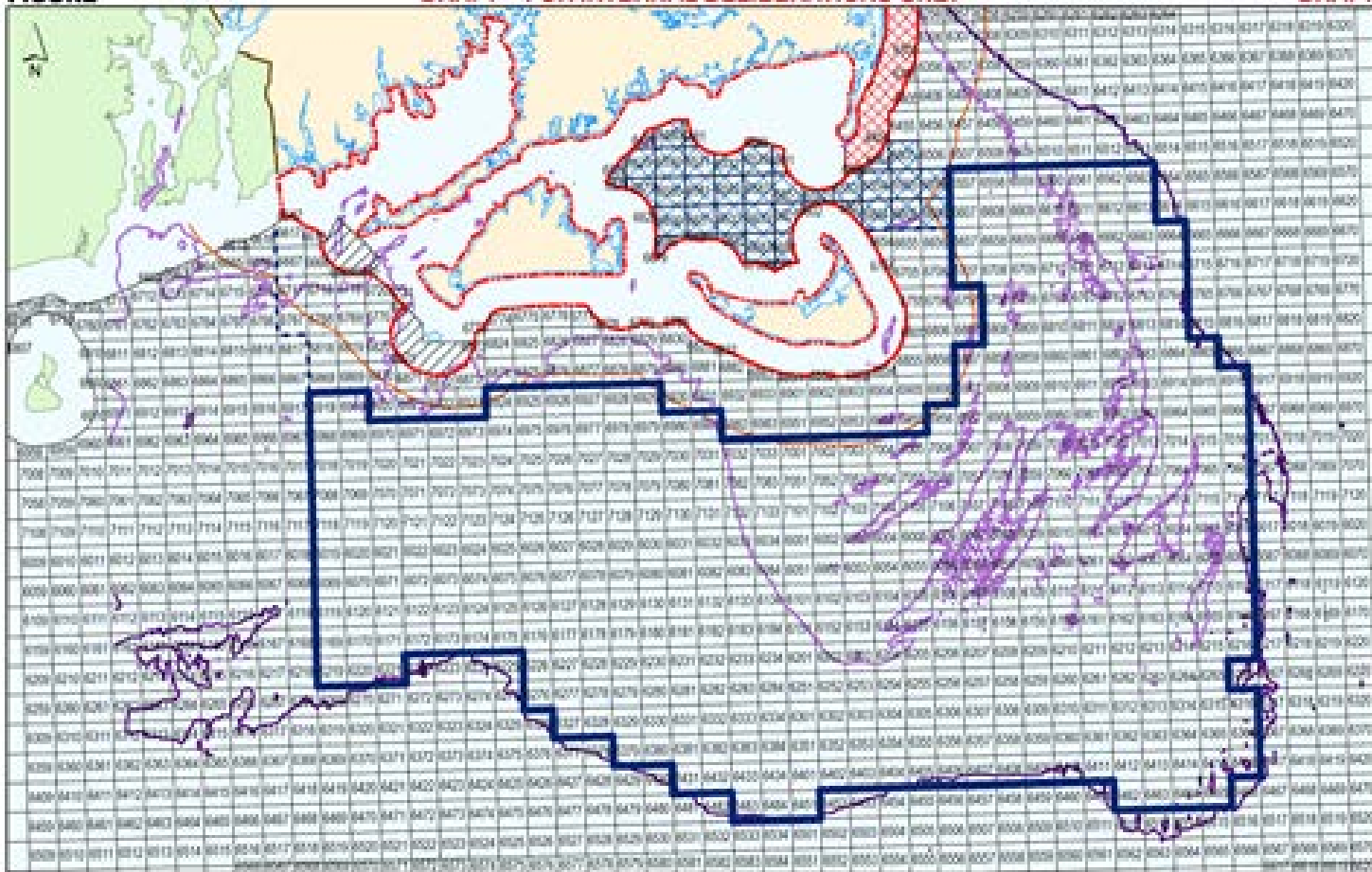
3 - Site Assessment

4 - Construction and Operations

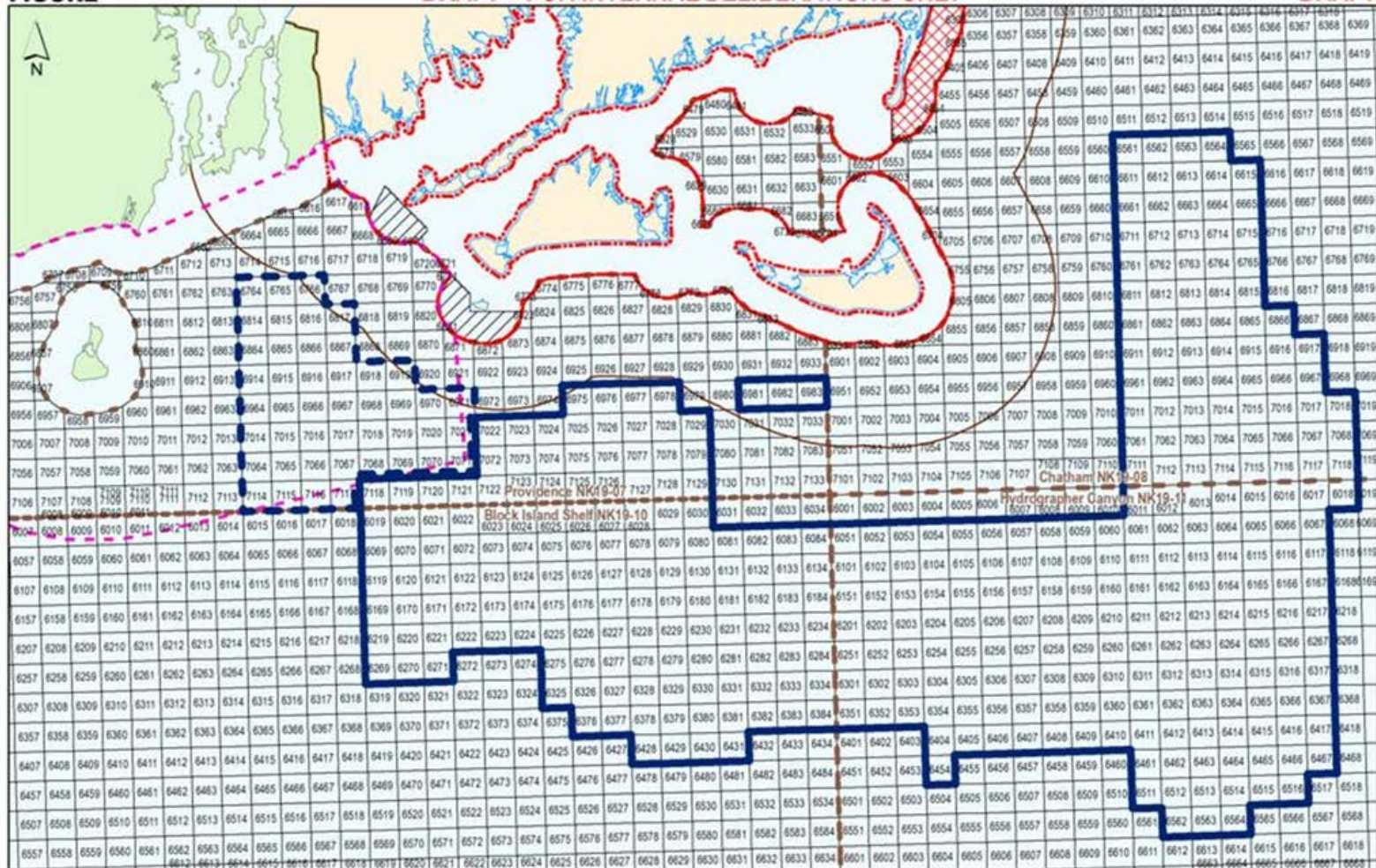
Massachusetts Planning & Analysis

- **Massachusetts Intergovernmental Renewable Energy Task Force** ([November 2009](#))
- **Request for Interest** ([December 2010](#); [March 2011](#))
- Reduction of eastern portion of RFI area ([May 2011](#))
- **Call for Information and Nominations & Notice of Intent to Prepare Environmental Assessment** ([February 2012](#))
- Area Identification of the **Massachusetts Wind Energy Area** ([May 2012](#))
- Notice of Availability of an **Environmental Assessment** ([November 2012](#))
- Department of Energy National Renewable Energy Laboratory **Final Delineation Report** of the Massachusetts WEA ([December 2013](#))

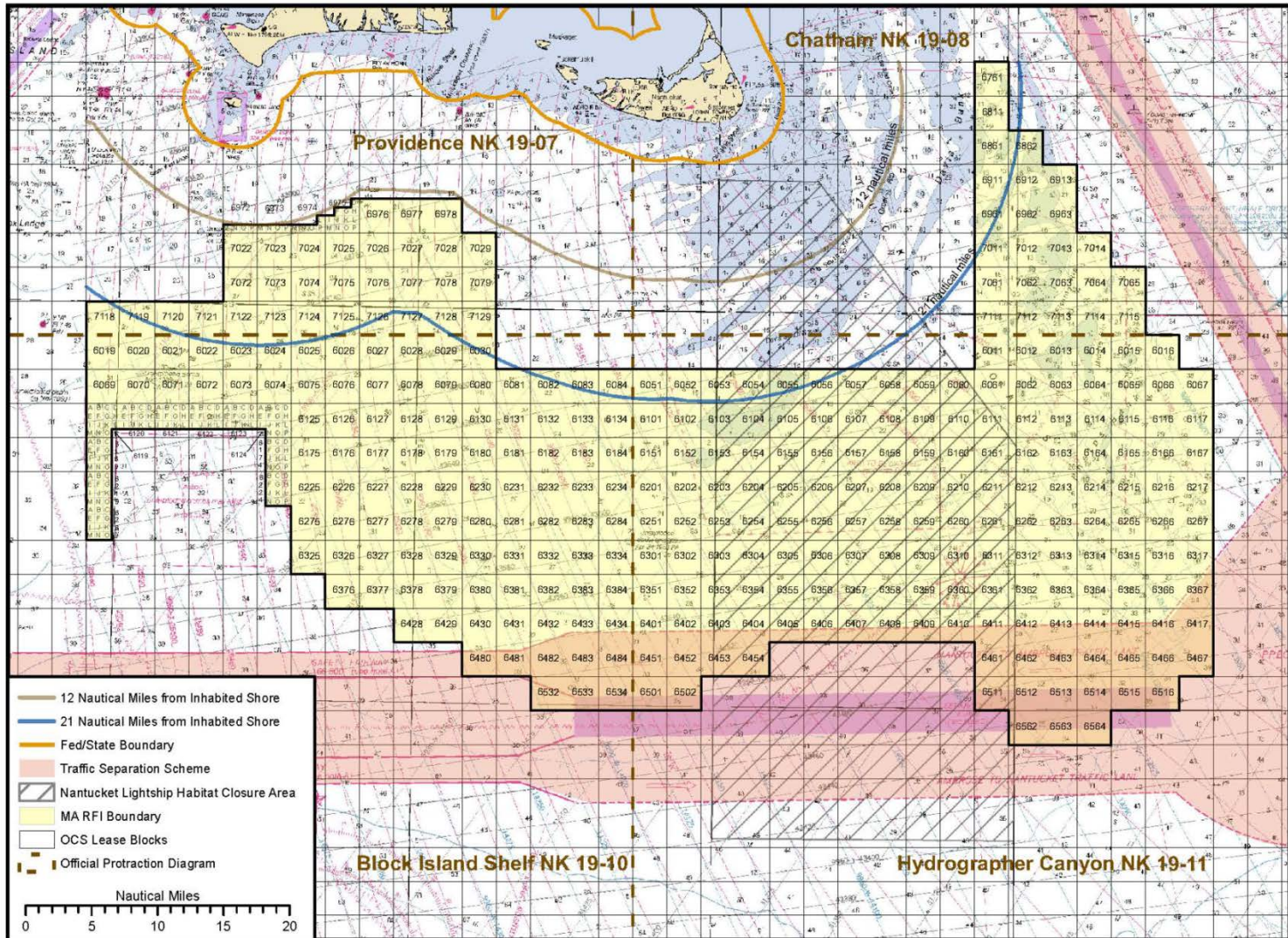
Massachusetts – Initial Planning Area



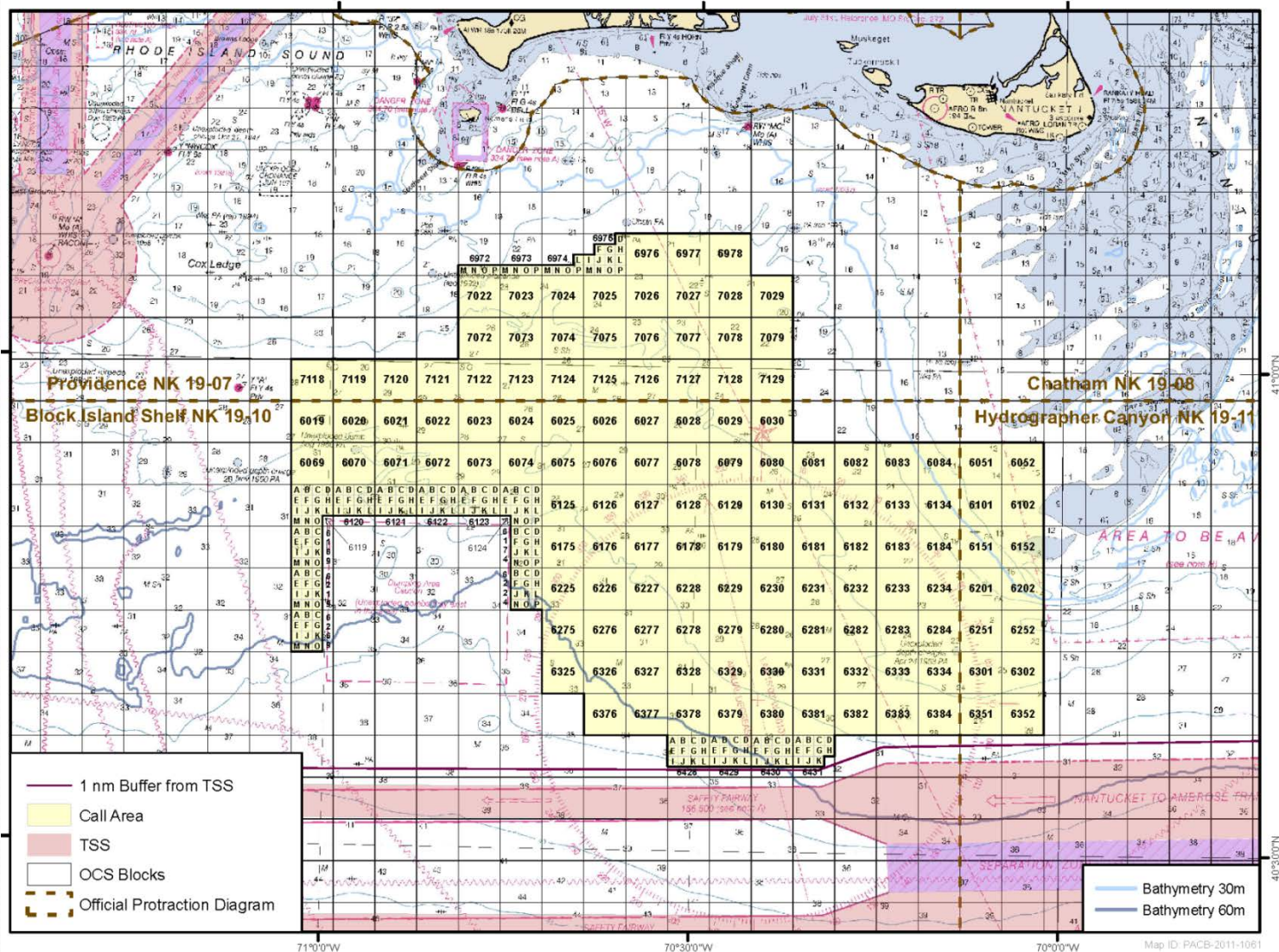
Massachusetts – Revised Area



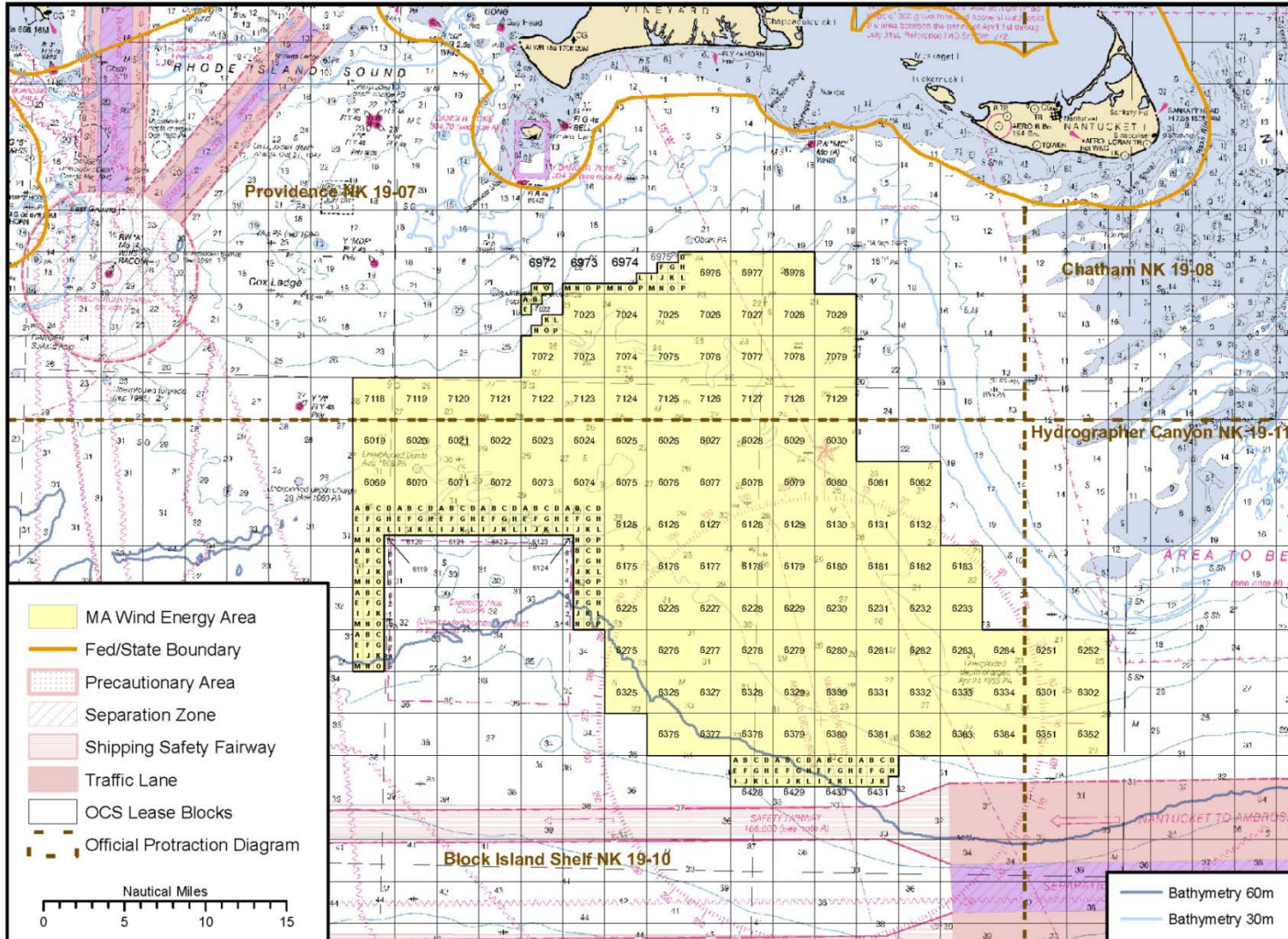
Massachusetts – RFI Area



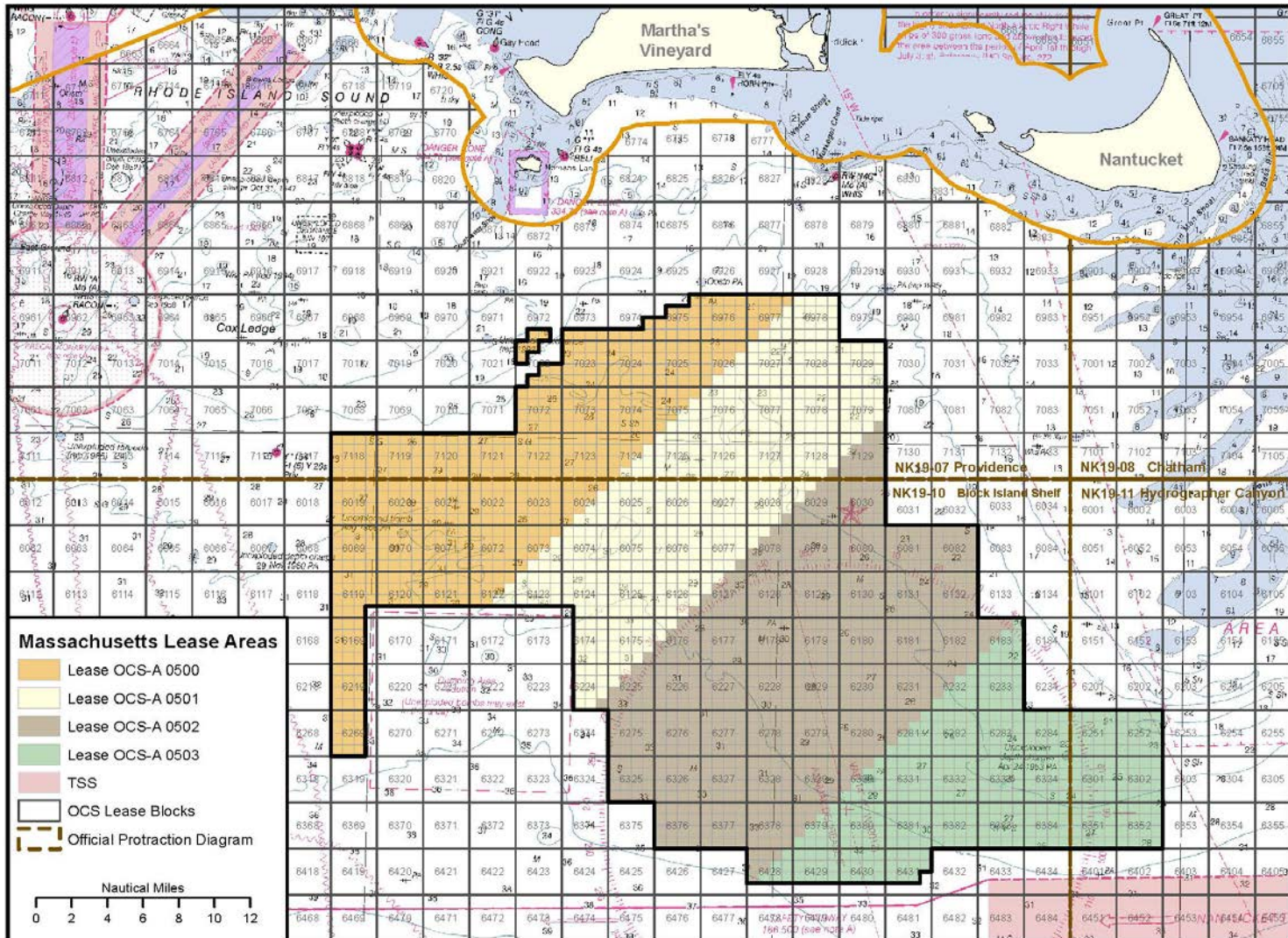
Massachusetts – Call Area



Massachusetts – Area ID



Massachusetts Lease Areas





Thank you!

Maureen A. Bornholdt
Maureen.Bornholdt@boem.gov
(703) 787-1300