

APPENDIX C

**OVERFLOOD CHARACTERISTICS
AND
COMPOSITE OVERFLOOD MAPS**

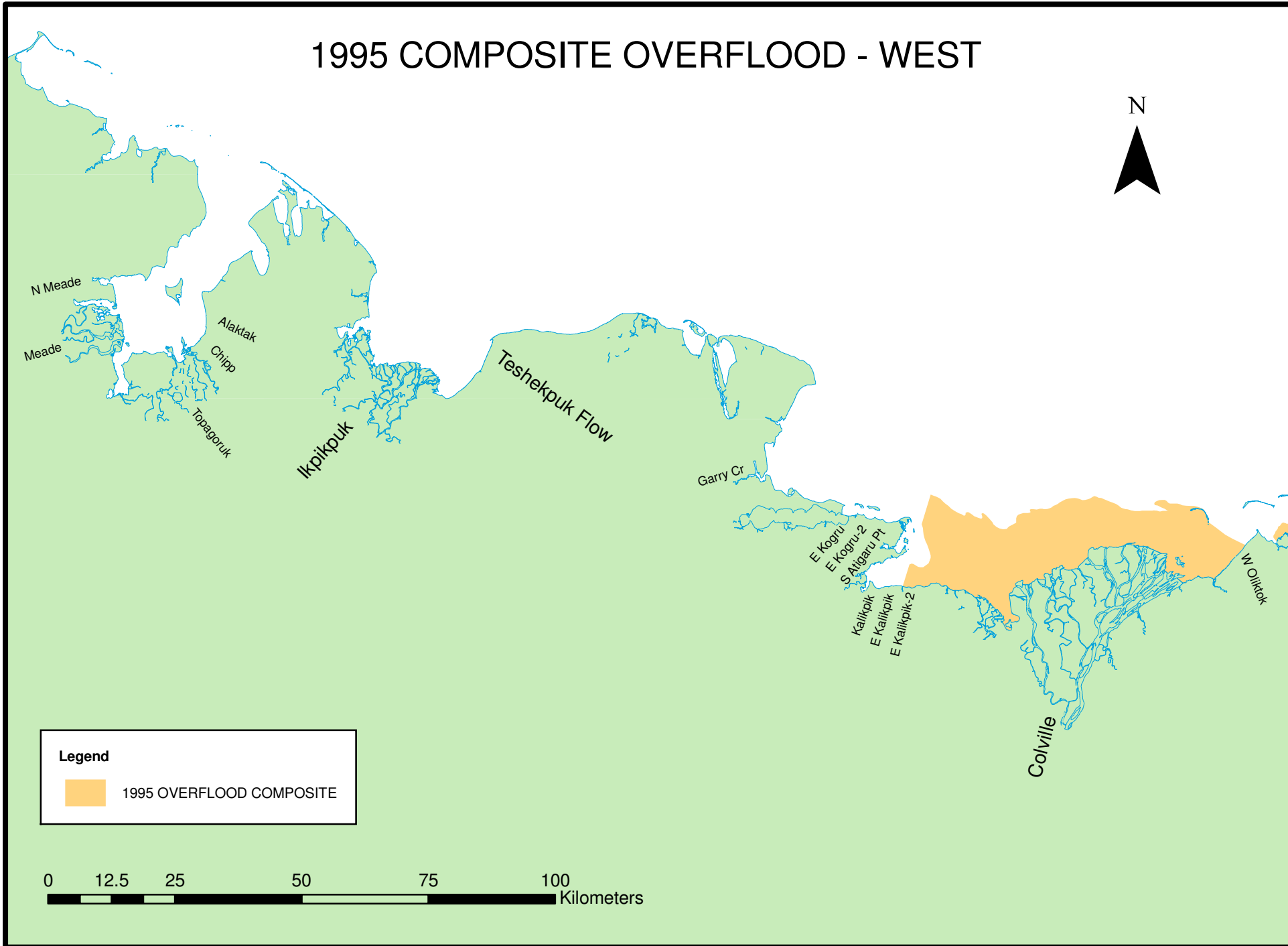
River Name	year	Latest Image Date	Maximum Lateral Extent (km)	Maximum Offshore Extent (km)	Total Overflood Area (km ²)	Secondary Zone Area (km ²)	Primary Zone Area (km ²)	Tertiary Zone Area (km ²)
NMeade	2007	6/6/2007	1.9	1.6	1.9	1.9		
Meade	2000	6/10/2000	18.6	3.9	49.2	49.2		
Meade	2007	6/6/2007	12.4	4.3	33.9	33.9		
Topagoruk	2000	6/12/2000	20.0	13.0	101.9	101.9		
Chipp	2007	6/6/2007	5.3	4.4	10.4	10.4		
Alaktak	2000	6/14/2000	3.7	5.8	13.5	13.5		
Alaktak	2001	6/15/2001	5.8	1.5	3.7	3.7		
Alaktak	2007	6/6/2007	9.5	2.0	14.3	14.3		
Ikpikpuk	1998	5/28/1998	7.7	1.7	10.7	6.7	4.0	
Ikpikpuk	2000	6/12/2000	28.1	18.4	283.6	76.5	207.1	
Ikpikpuk	2001	6/15/2001	19.3	4.1	54.0	32.1	21.9	
Ikpikpuk	2004	6/3/2004	30.4	19.5	225.1	79.9	145.2	
Ikpikpuk	2006	6/9/2006	32.9	9.4	164.5	63.1	101.4	
Ikpikpuk	2007	6/6/2007	21.6	6.1	93.8	46.9	46.9	
Teshekpuk Flow	2000	6/12/2000	8.1	0.8	3.4	3.4		
Garry Cr	2004	6/11/2004	8.5	3.3	12.4	12.1	0.3	
E Kogru	2007	6/5/2007	1.4	0.9	0.6	0.6		
E Kogru-2	2007	6/4/2007	1.0	0.5	0.3	0.3		
S Atigaru Pt	2006	6/9/2006	7.4	1.7	5.5	5.5		
Kalikpik	2001	6/9/2001	5.1	5.4	21.5	21.5		
E Kalikpik	2007	6/4/2007	0.5	0.4	0.1	0.1		
Kalikpik	2007	6/6/2007	4.8	3.2	14.3	14.3		
E Kalikpik-2	2007	6/4/2007	1.1	0.5	0.3	0.3		
Colville	1995	5/23/1995	64.5	25.5	734.7	470.3	252.7	11.7
Colville	1996	5/26/1996	61.7	15.1	598.0	407.2	184.2	6.6
Colville	1997	5/30/1997	57.4	15.6	510.3	390.7	119.6	
Colville	1998	5/28/1998	73.9	22.1	791.8	528.6	262.5	0.7
Colville	1999	6/3/1999	57.3	15.1	485.1	386.0	99.1	
Colville	2000	6/14/2000	81.4	25.9	858.2	532.9	304.0	21.3
Colville	2001	6/9/2001	66.3	22.6	761.2	450.1	268.0	43.0
Colville	2002	5/25/2002	77.0	23.9	909.0	503.1	300.5	105.4
Colville	2003	6/9/2003	68.8	27.6	543.8	437.2	106.6	
Colville	2004	6/11/2004	87.3	21.7	1011.5	589.2	408.7	13.7
Colville	2005	6/5/2005	84.9	21.0	771.0	528.3	242.6	0.1
Colville	2006	6/9/2006	77.5	21.0	741.0	534.0	207.0	
Colville	2007	6/1/2007	63.1	26.1	602.6	459.6	143.0	
W Oliktok	2007	6/6/2007	0.7	0.4	0.2	0.2		
Ugnuravik	1996	5/26/1996	4.8	2.8	9.2	5.9	3.3	
Ugnuravik	2002	5/25/2002	9.2	4.4	26.4	6.3	20.1	
Ugnuravik	2003	6/6/2003	5.8	2.7	10.1	6.2	3.9	
Ugnuravik	2007	6/6/2007	8.0	2.9	11.6	6.1	5.6	
No Point	2007	6/6/2007	0.9	0.3	0.2	0.2		
Milne Cr	2002	5/23/2002	3.8	2.0	5.3	1.4	3.9	
Milne Cr	2007	6/6/2007	5.5	1.8	7.5	5.4	2.1	
Kuparuk	1995	5/20/1995	16.4	7.3	90.2	52.9	37.0	0.2
Kuparuk	1996	6/4/1996	18.2	8.0	95.7	62.2	33.5	
Kuparuk	1997	5/30/1997	21.8	6.0	105.2	70.0	35.2	
Kuparuk	1998	6/2/1998	28.9	9.5	158.5	82.2	67.3	8.9
Kuparuk	1999	5/30/1999	15.4	7.1	73.4	53.6	19.8	
Kuparuk	2000	6/15/2000	28.9	9.5	141.8	75.0	65.1	1.8
Kuparuk	2001	6/11/2001	45.5	10.9	224.6	104.0	93.6	18.3

River Name	year	Latest Image Date	Maximum Lateral Extent (km)	Maximum Offshore Extent (km)	Total Overflood Area (km ²)	Secondary Zone Area (km ²)	Primary Zone Area (km ²)	Tertiary Zone Area (km ²)
Kuparuk	2002	5/25/2002	46.8	13.4	261.8	106.0	115.1	40.7
Kuparuk	2003	6/6/2003	45.8	8.8	216.7	104.1	109.2	3.5
Kuparuk	2004	6/11/2004	53.6	9.5	262.8	110.2	151.6	0.9
Kuparuk	2005	6/12/2005	52.1	8.1	240.4	106.3	132.7	1.3
Kuparuk	2006	6/9/2006	52.9	8.1	275.0	120.3	154.7	
Kuparuk	2007	6/9/2007	22.3	7.2	97.6	68.4	29.1	
Putuligayuk	2000	6/11/2000	10.7	2.6	11.7	10.9	0.8	
Sagavanirktok	1995	5/20/1995	37.7	7.0	208.6	121.1	87.5	
Sagavanirktok	1997	5/31/1997	30.5	7.0	145.9	110.6	35.2	
Sagavanirktok	1998	6/1/1998	39.6	6.5	260.5	148.2	112.3	
Sagavanirktok	1999	6/3/1999	30.3	6.0	139.8	103.8	36.0	
Sagavanirktok	2000	6/16/2000	33.8	5.7	177.4	126.0	51.4	
Sagavanirktok	2001	6/13/2001	40.7	7.1	237.2	148.9	88.3	
Sagavanirktok	2002	5/25/2002	41.3	11.2	233.4	116.9	114.5	1.9
Sagavanirktok	2003	6/6/2003	32.4	6.2	154.6	112.6	42.0	
Sagavanirktok	2004	6/13/2004	41.1	7.9	247.4	139.6	107.8	
Sagavanirktok	2005	6/10/2005	27.7	7.1	137.3	100.0	37.3	
Sagavanirktok	2006	5/27/2006	39.0	8.0	213.0	138.5	74.4	
Sagavanirktok	2007	6/6/2007	37.4	6.5	178.3	126.3	52.0	
Kadleroshilik	1996	6/3/1996	4.0	1.5	3.9	3.9		
Kadleroshilik	1997	5/31/1997	6.9	1.9	10.6	9.9	0.7	
Kadleroshilik	1998	6/1/1998	9.1	2.9	18.2	12.5	5.7	
Kadleroshilik	1999	6/3/1999	6.5	2.6	11.6	10.7	0.9	
Kadleroshilik	2000	6/16/2000	7.6	3.7	19.3	10.2	9.1	
Kadleroshilik	2001	6/14/2001	7.1	3.2	16.1	10.3	5.7	
Kadleroshilik	2002	5/25/2002	6.3	5.4	24.7	9.9	14.9	
Kadleroshilik	2003	6/6/2003	7.9	4.0	17.9	10.3	7.6	
Kadleroshilik	2004	6/13/2004	5.9	2.7	11.4	8.3	3.1	
Kadleroshilik	2005	6/10/2005	7.5	3.0	15.8	10.2	5.6	
Kadleroshilik	2006	6/9/2006	5.2	3.2	15.6	10.3	5.3	
Kadleroshilik	2007	6/6/2007	7.7	3.6	19.9	13.1	6.8	
Shaviovik	1996	6/3/1996	9.0	5.2	28.3	25.1	3.3	
Shaviovik	1997	5/31/1997	14.2	6.6	60.0	43.2	16.8	
Shaviovik	1998	6/1/1998	13.3	7.1	59.3	43.9	15.4	
Shaviovik	1999	6/3/1999	15.4	5.8	51.2	38.7	12.5	
Shaviovik	2000	6/16/2000	16.6	6.6	69.0	44.4	24.6	
Shaviovik	2001	6/13/2001	16.7	6.6	68.4	43.0	25.4	
Shaviovik	2002	5/25/2002	23.1	7.1	108.8	47.1	61.6	
Shaviovik	2003	6/6/2003	17.2	6.7	73.0	44.9	28.1	
Shaviovik	2004	6/13/2004	15.8	6.6	63.7	43.6	20.1	
Shaviovik	2005	6/10/2005	21.5	5.6	64.1	46.2	17.9	
Shaviovik	2006	5/27/2006	18.1	6.1	56.3	40.8	15.5	
Shaviovik	2007	6/6/2007	26.7	6.0	84.6	49.1	35.5	
W Badami Cr	1998	5/29/1998	4.9	1.6	6.9	2.9	4.0	
E Badami Cr	1998	5/29/1998	6.2	1.5	7.6	2.7	4.9	
Bullen to Pt Thom.	1998	5/29/1998	21.4	3.2	40.9	8.3	32.6	
E Bullen Pt	2007	6/6/2007	3.5	2.0	4.8	1.2	3.6	
W Pt Gordon	2007	6/6/2007	1.9	0.4	0.7	0.6	0.2	
E Pt Gordon	2007	6/6/2007	2.4	1.2	2.2	0.9	1.3	
W Pt Sweeney	2002	5/25/2002	2.2	1.1	2.2	0.9	1.2	
E Pt Sweeney	2002	5/25/2002	1.2	1.2	1.2	0.8	0.4	


River Name	year	Latest Image Date	Maximum Lateral Extent (km)	Maximum Offshore Extent (km)	Total Overflood Area (km ²)	Secondary Zone Area (km ²)	Primary Zone Area (km ²)	Tertiary Zone Area (km ²)
W Pt Thomson	2002	5/25/2002	2.5	1.1	2.1	1.0	1.0	
Pt Thomson	2006	6/11/2006	42.9	17.9	291.0	27.6	235.4	28.0
E Pt Thomson	1998	5/29/1998	4.2	2.5	7.2	2.5	4.7	
E Pt Thomson	2002	5/25/2002	1.8	0.8	1.1	1.1		
E Pt Thomson-2	2002	5/25/2002	2.1	1.2	1.8	0.7	1.1	
E Pt Thomson-2	2006	5/27/2006	0.6	0.6	0.2	0.2		
E Pt Thomson-2a	2002	5/25/2002	0.7	0.1	0.1	0.1		
W Staines	1996	6/3/1996	3.8	1.7	4.0	1.6	2.4	
Staines	1996	6/3/1996	7.1	4.5	15.1	14.7	0.4	
Staines	1997	5/30/1997	6.9	3.2	16.0	14.1	1.9	
Staines	1998	5/29/1998	9.5	5.1	36.1	19.4	16.7	
Staines	1999	5/31/1999	7.3	3.4	19.0	17.1	1.9	
Staines	2000	6/12/2000	8.4	3.2	20.1	16.4	3.7	
Staines	2001	6/9/2001	12.7	5.7	31.0	20.0	11.0	
Staines	2002	5/25/2002	9.9	3.6	23.3	18.3	5.0	
Staines	2003	6/9/2003	4.7	3.4	11.6	11.6		
Staines	2004	5/21/2004	11.8	4.4	36.4	19.9	16.5	
Staines	2005	6/3/2005	9.1	1.9	10.6	8.3	2.2	
Staines	2006	5/27/2006	9.7	5.9	34.1	18.8	15.3	
Staines	2007	6/10/2007	26.3	5.0	86.8	26.6	60.2	
Canning	1995	5/30/1995	20.8	2.2	29.1	25.5	3.7	
Canning	1996	6/3/1996	7.1	2.5	26.5	16.6	8.9	0.9
Canning	1997	5/30/1997	18.6	2.8	30.7	24.8	5.8	0.1
Canning	1998	6/1/1998	11.1	1.5	16.2	14.6	1.6	
Canning	1999	5/31/1999	9.2	2.1	15.9	14.0	1.9	
Canning	2000	6/11/2000	14.4	1.8	20.2	18.0	2.2	
Canning	2001	6/9/2001	22.1	2.2	32.1	26.3	5.9	0.0
Canning	2002	5/23/2002	25.0	4.8	40.0	27.4	12.1	0.5
Canning	2003	6/9/2003	8.0	2.8	9.1	8.5	0.7	
Canning	2004	5/21/2004	22.1	2.6	32.7	26.3	6.3	0.1
Canning	2005	6/3/2005	22.4	2.1	26.9	22.8	4.1	
Canning	2006	5/27/2006	35.4	5.2	82.8	37.5	45.1	0.2
Canning	2007	6/6/2007	12.3	2.2	16.3	16.0	0.3	
W Konganevik Pt	2002	5/25/2002	2.1	1.8	1.2	0.4	0.8	
E Konganevik Pt	2000	6/13/2000	5.1	3.6	10.5	6.2	4.4	
Katakturuk	1995	5/30/1995	9.1	2.3	13.1	8.4	4.8	
Katakturuk	1997	5/30/1997	7.7	3.3	12.0	6.8	5.2	
Katakturuk	1998	6/1/1998	2.5	1.1	2.1	1.9	0.2	
Katakturuk	1999	5/31/1999	3.6	1.3	3.8	2.9	0.9	
Katakturuk	2000	6/11/2000	8.2	2.6	13.9	8.0	5.8	
Katakturuk	2001	6/9/2001	10.2	2.8	17.8	9.2	8.6	
Katakturuk	2002	5/25/2002	15.9	3.8	42.5	15.9	26.6	
Katakturuk	2003	6/9/2003	4.0	1.1	3.5	3.1	0.3	
Katakturuk	2004	6/2/2004	9.5	2.0	13.2	8.2	5.0	
Katakturuk	2005	6/3/2005	6.8	2.4	8.0	6.6	1.4	
Katakturuk	2006	6/13/2006	7.2	3.2	12.5	5.2	7.3	
Katakturuk	2007	6/2/2007	7.5	1.8	9.2	7.3	1.9	
S Marsh Cr	2000	6/13/2000	1.9	1.1	1.7	0.7	1.0	
Marsh Cr	2004	6/2/2004	9.0	0.8	6.5	1.9	2.6	2.0
Marsh Cr	2005	6/3/2005	3.8	1.3	2.1	0.4	1.2	0.5
Marsh Cr	2006	6/13/2006	0.6	0.5	0.2	0.1	0.1	0.0

River Name	year	Latest Image Date	Maximum Lateral Extent (km)	Maximum Offshore Extent (km)	Total Overflood Area (km ²)	Secondary Zone Area (km ²)	Primary Zone Area (km ²)	Tertiary Zone Area (km ²)
Marsh Cr	2007	6/3/2007	0.9	0.5	0.4	0.1	0.2	0.1
N Marsh Cr	2000	6/11/2000	4.3	1.1	3.4	0.8	1.0	1.5
Sadlerochit	1995	5/30/1995	6.6	2.1	9.4	9.0	0.3	
Sadlerochit	1996	5/28/1996	6.1	1.4	5.4	5.4		
Sadlerochit	1997	5/30/1997	11.7	2.4	18.0	13.9	3.2	0.9
Sadlerochit	1998	6/1/1998	5.3	1.6	5.4	5.4		
Sadlerochit	1999	5/31/1999	4.4	1.6	6.1	6.1		
Sadlerochit	2000	6/13/2000	11.3	1.7	16.0	15.8	0.3	
Sadlerochit	2001	6/14/2001	7.8	2.3	10.7	9.4	0.9	0.3
Sadlerochit	2002	5/25/2002	4.0	1.6	4.6	4.6		
Sadlerochit	2003	6/9/2003	6.0	1.3	5.8	5.8		
Sadlerochit	2004	5/21/2004	11.0	1.8	13.1	12.2	0.8	0.0
Sadlerochit	2005	6/3/2005	4.9	1.6	5.3	4.6	0.6	0.1
Sadlerochit	2006	6/13/2006	6.0	2.3	8.3	7.0	0.8	0.4
Sadlerochit	2007	6/2/2007	9.4	2.7	15.3	12.5	1.8	1.0
Hulahula	1997	5/30/1997	18.5	3.3	45.8	40.3	5.1	0.4
Hulahula	1998	6/1/1998	13.1	1.6	19.0	19.0		
Hulahula	1999	5/31/1999	17.9	3.4	27.7	27.7	0.0	
Hulahula	2000	6/13/2000	20.3	5.0	60.7	58.2	2.5	
Hulahula	2001	6/13/2001	22.4	5.2	53.8	52.1	1.7	
Hulahula	2002	5/25/2002	10.4	3.3	16.9	16.9		
Hulahula	2003	6/9/2003	12.1	1.3	14.9	14.9		
Hulahula	2004	6/3/2004	9.8	4.1	22.4	20.3	2.1	
Hulahula	2005	6/3/2005	20.2	4.7	26.5	25.4	1.1	
Hulahula	2006	6/13/2006	21.6	3.8	42.1	41.1	0.9	0.1
Hulahula	2007	6/2/2007	15.1	3.7	30.6	28.2	2.4	
Okpilak	2002	5/25/2002	9.6	4.4	21.5	21.5	0.0	
Aery Lagoon	2003	6/9/2003	9.6	5.2	23.2	23.2		

1995 COMPOSITE OVERFLOOD - WEST

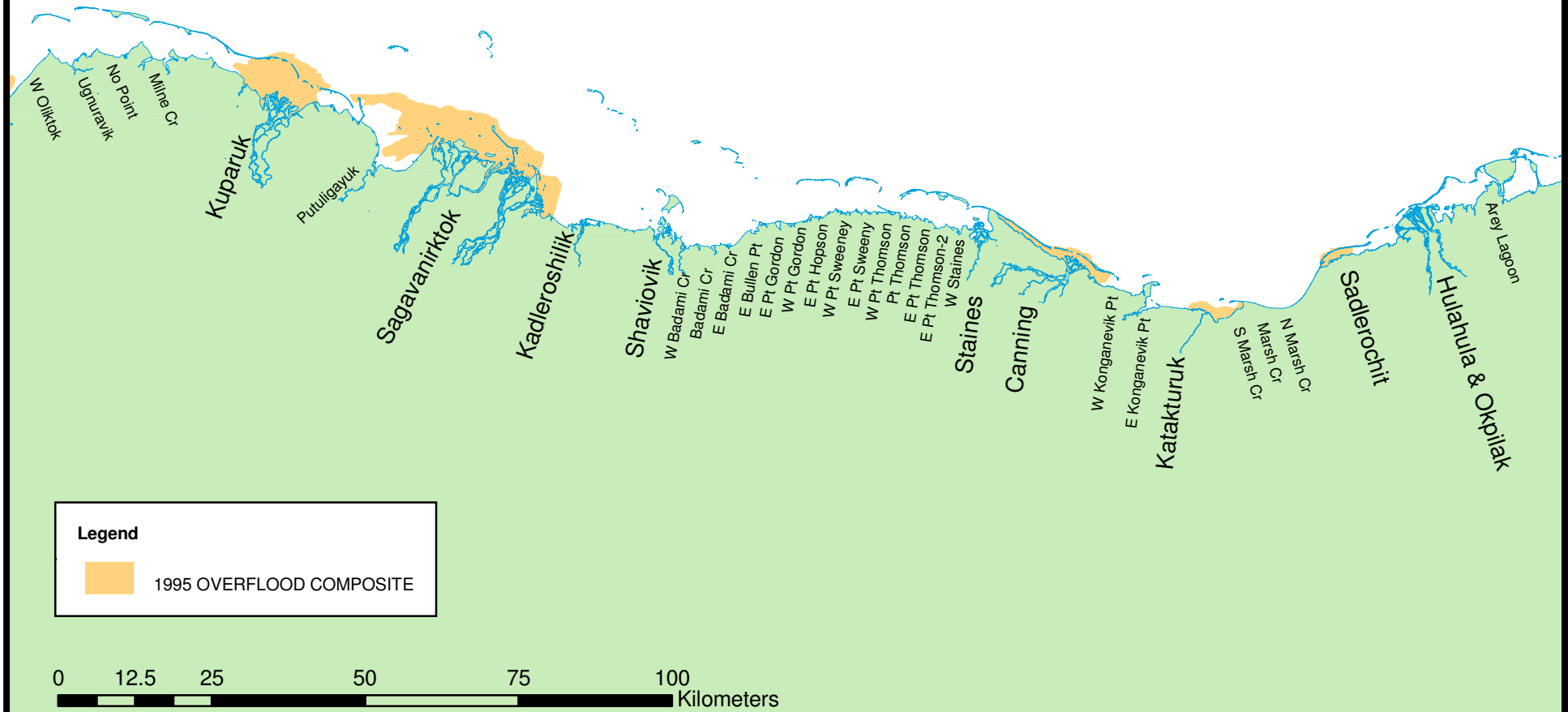


Legend

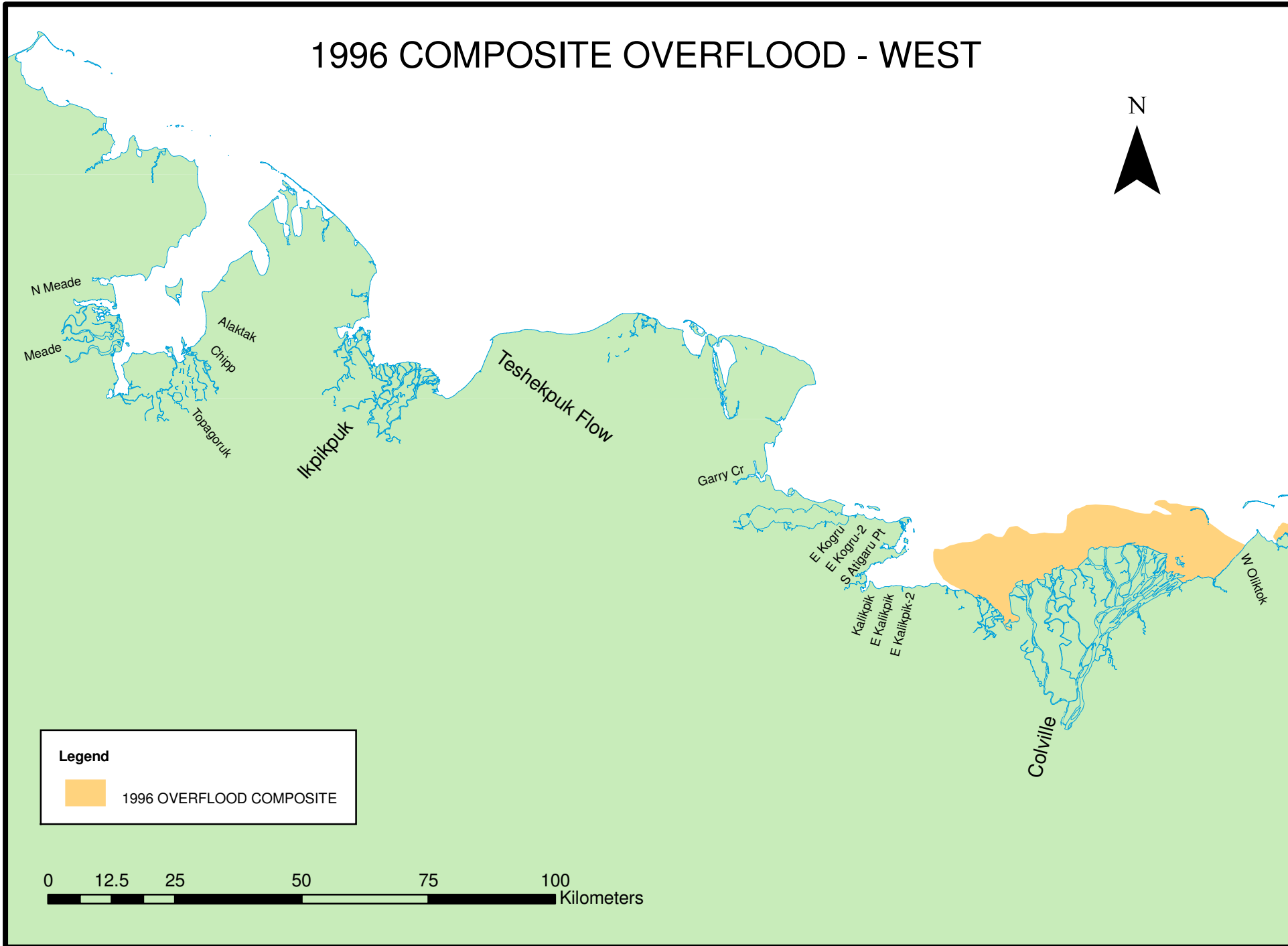
 1995 OVERFLOOD COMPOSITE




1995 OVERFLOOD COMPOSITE - EAST



1996 COMPOSITE OVERFLOOD - WEST

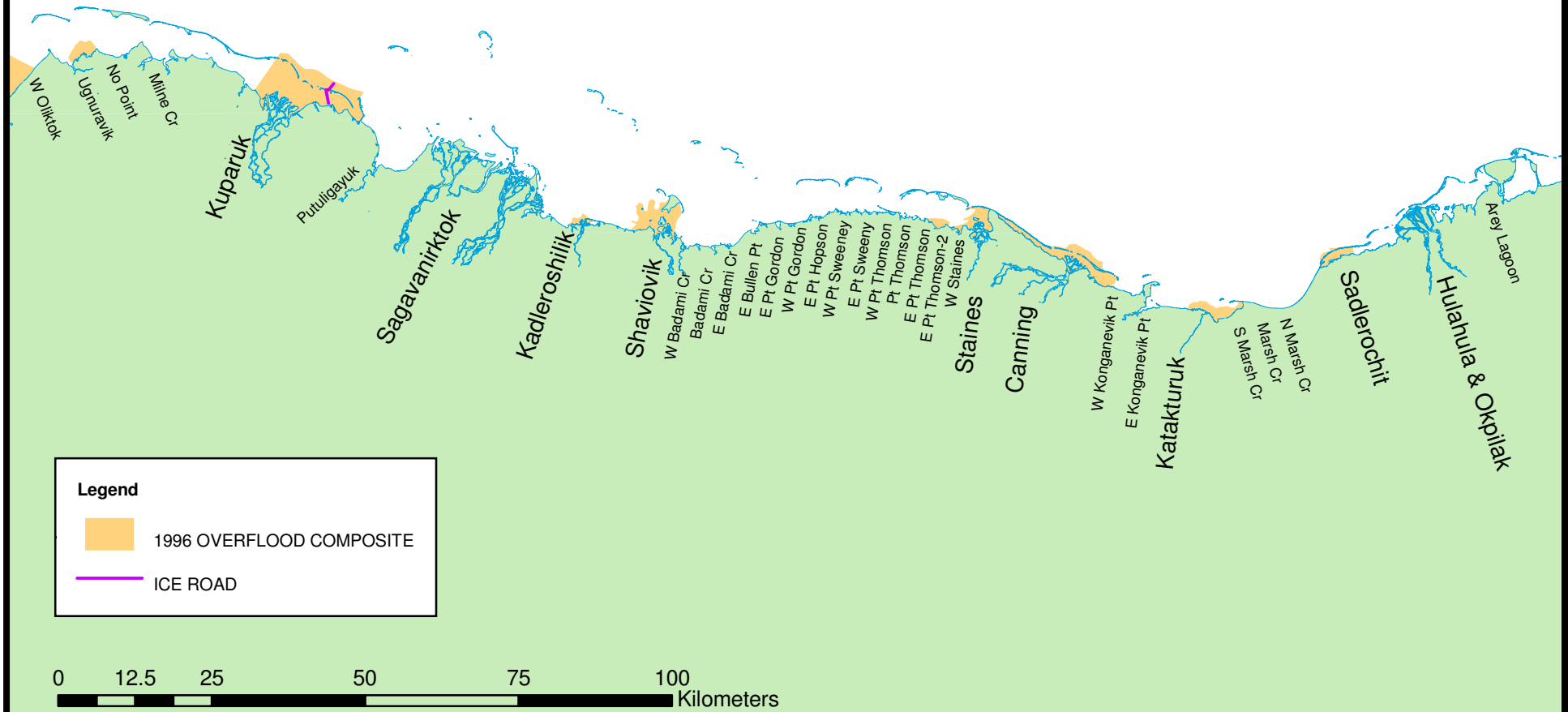


Legend

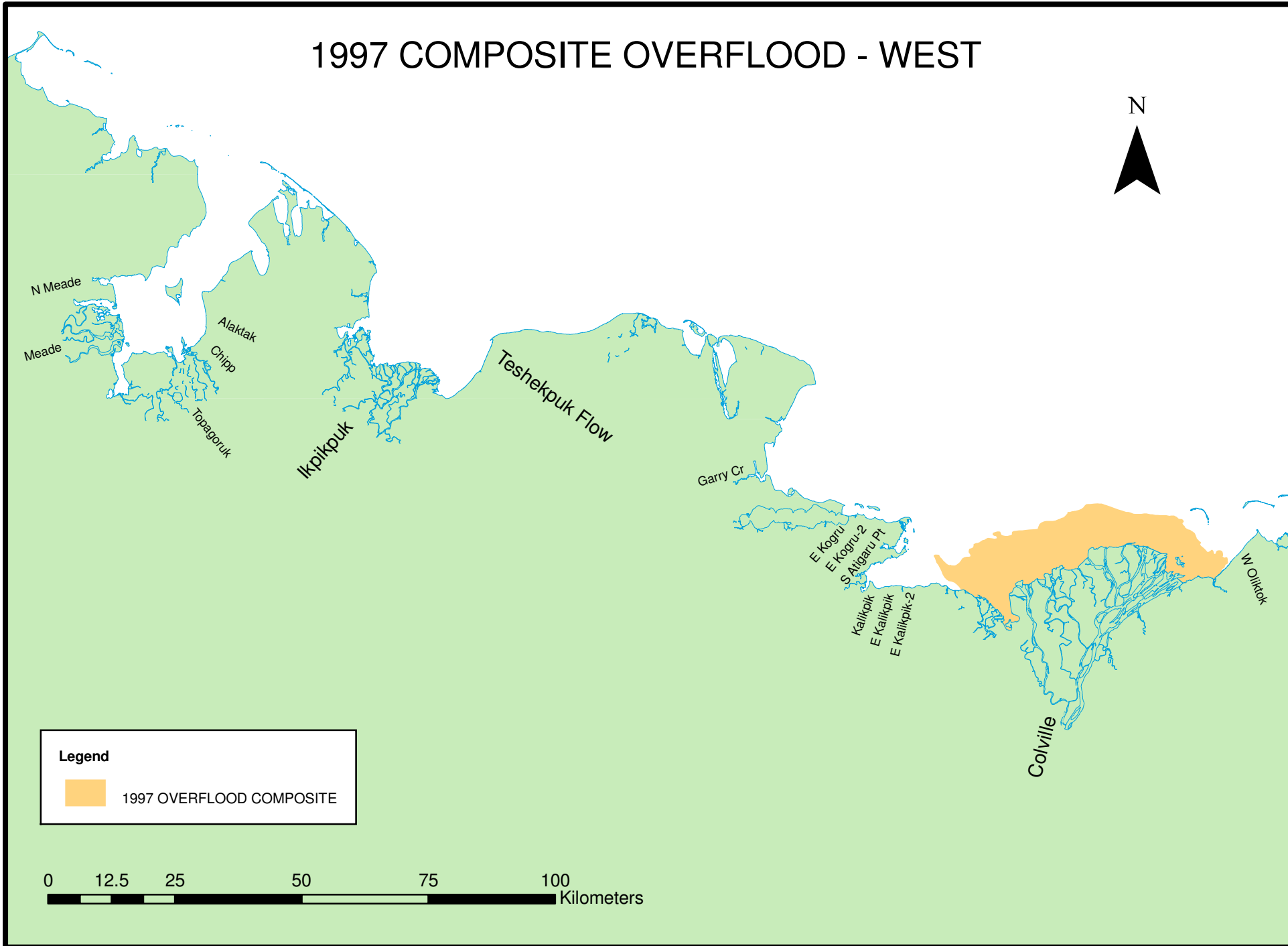
 1996 OVERFLOOD COMPOSITE




1996 OVERFLOOD COMPOSITE - EAST



1997 COMPOSITE OVERFLOOD - WEST

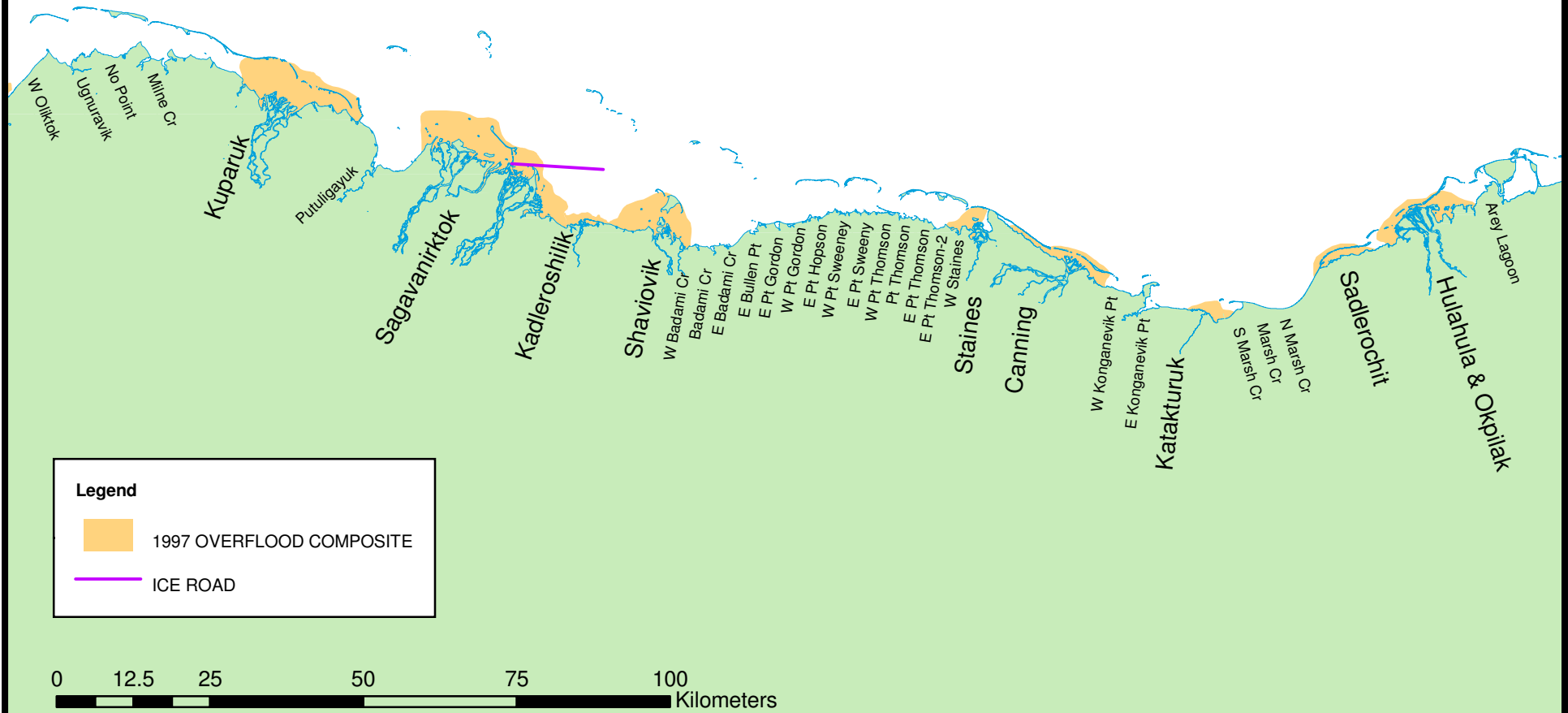


Legend

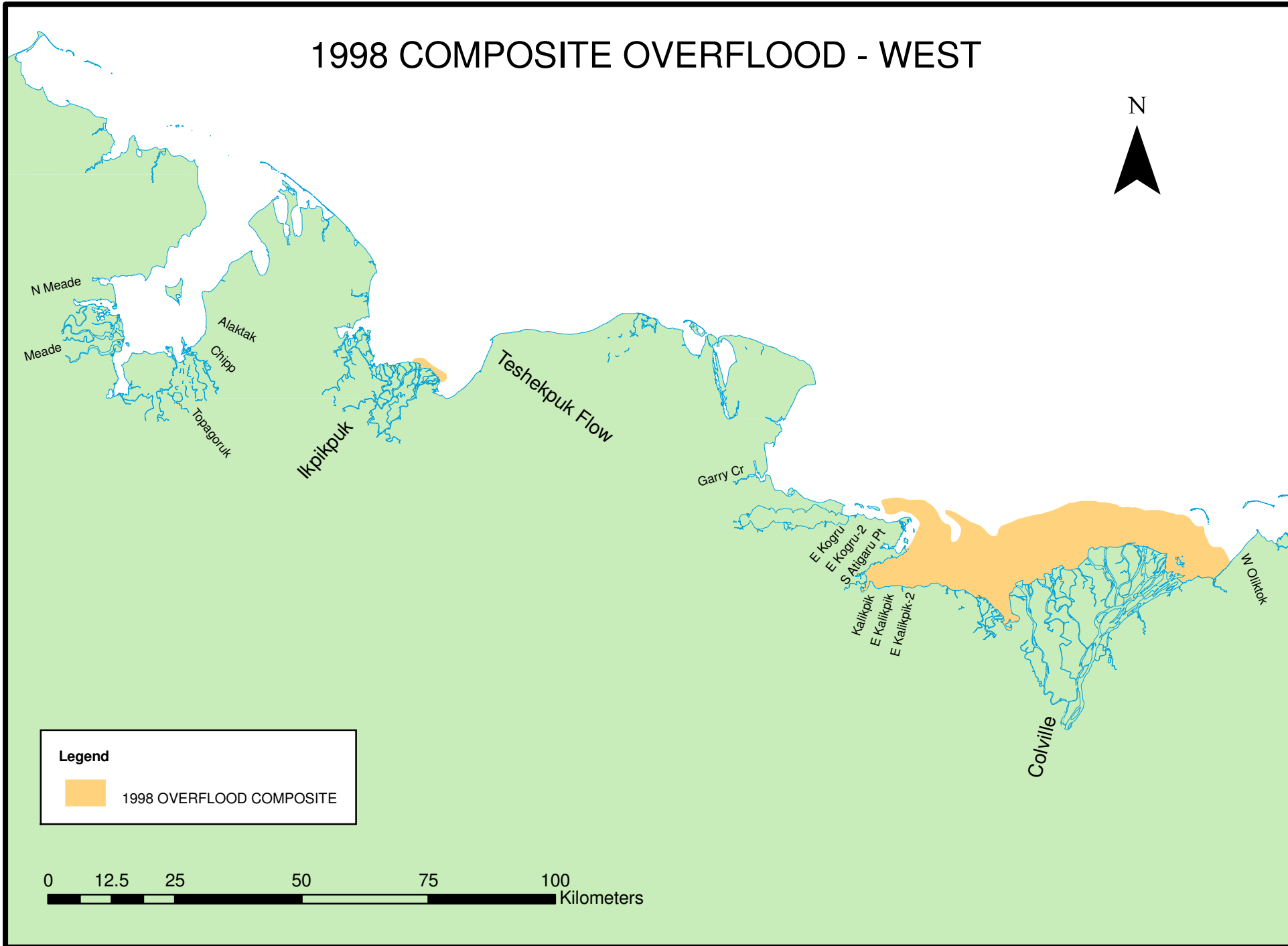
 1997 OVERFLOOD COMPOSITE



1997 OVERFLOOD COMPOSITE - EAST



1998 COMPOSITE OVERFLOOD - WEST

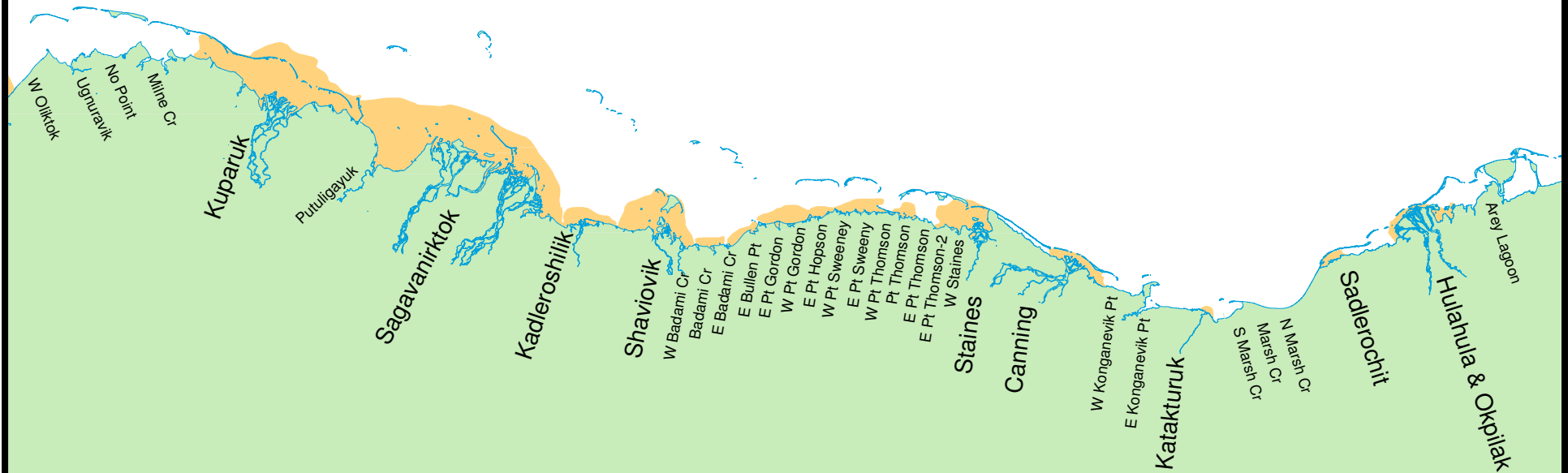


Legend

 1998 OVERFLOOD COMPOSITE



1998 OVERFLOOD COMPOSITE - EAST



Legend

 1998 OVERFLOOD COMPOSITE



1999 COMPOSITE OVERFLOOD - WEST

N



N Meade

Meade

Alaktak

Chipp

Topagoruk

Ikpikpuk

Teshkepuk Flow

Garry Cr

E Kogru

E Kogru-2

S Atigaru Pt

Kalikpik

E Kalikpik

E Kalikpik-2

Colville

W Olltok

Legend

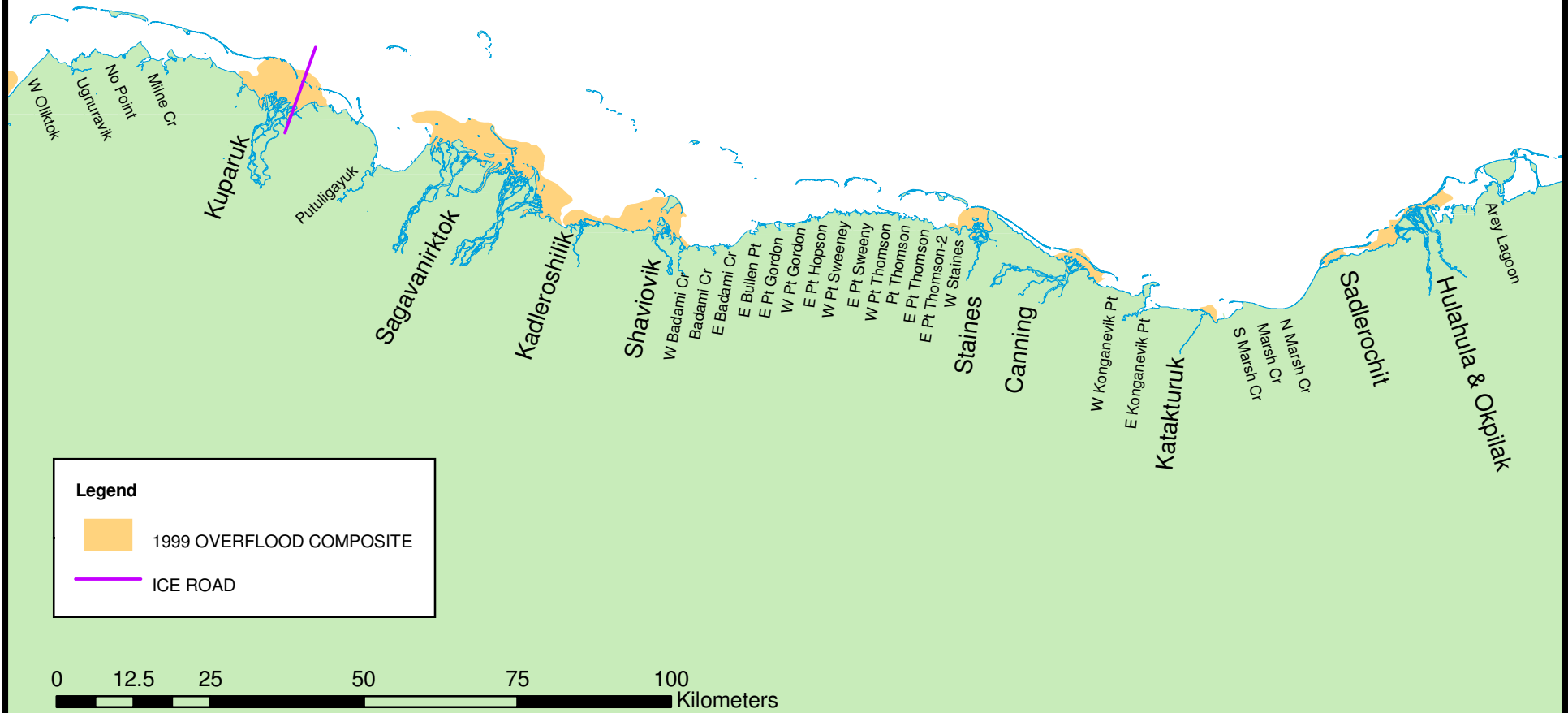


1999 OVERFLOOD COMPOSITE

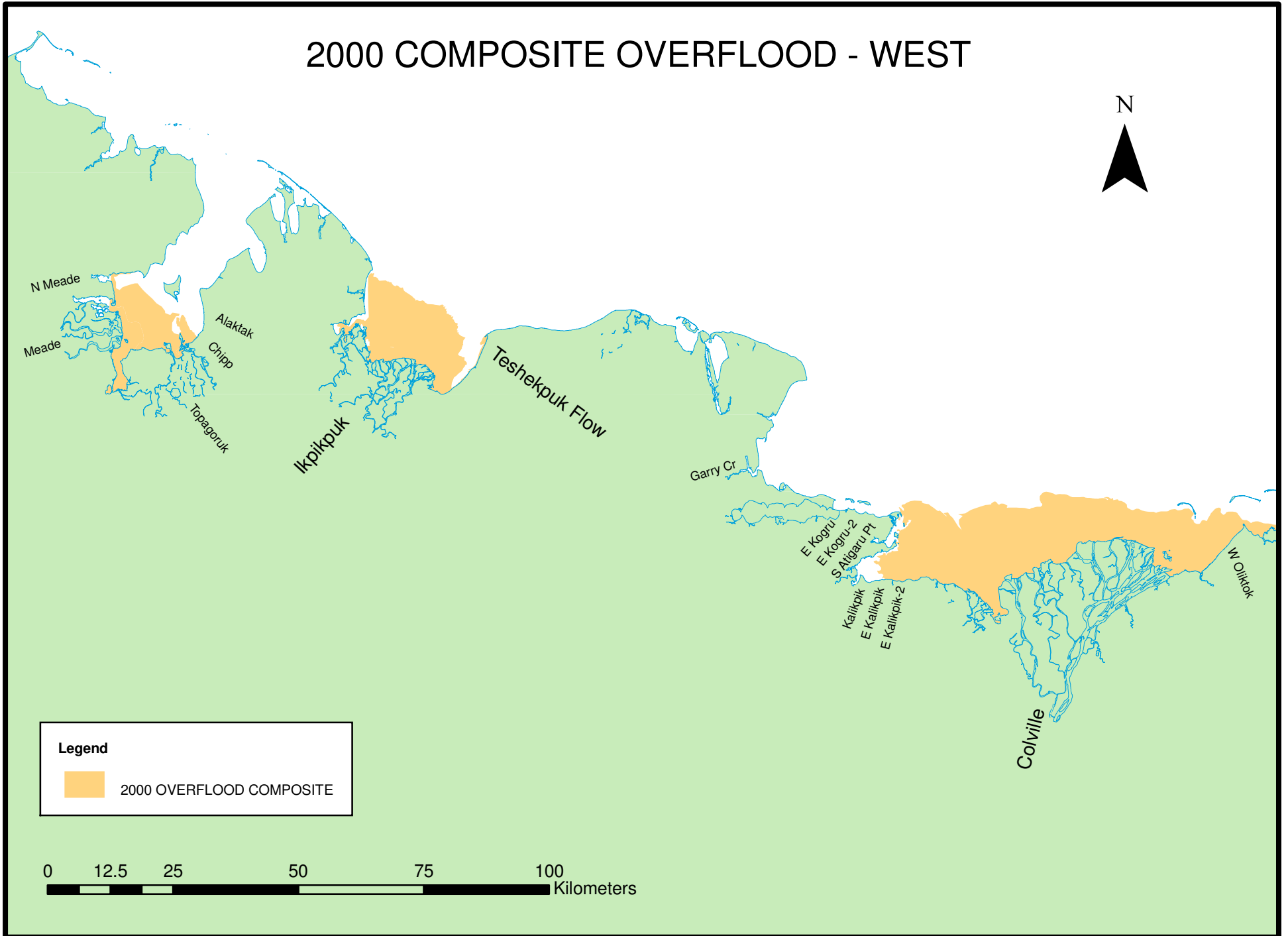
0 12.5 25 50 75 100 Kilometers




1999 OVERFLOOD COMPOSITE - EAST



2000 COMPOSITE OVERFLOOD - WEST

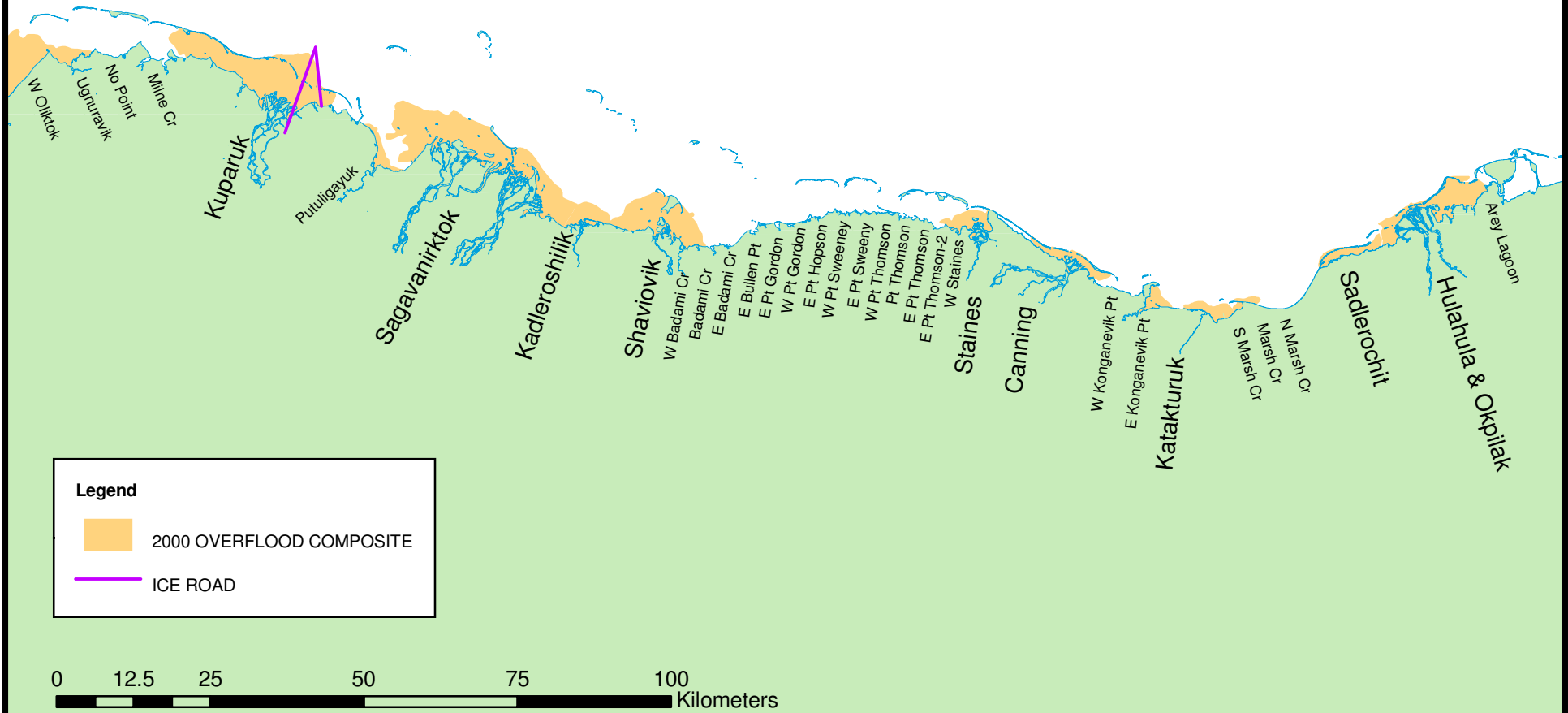


Legend

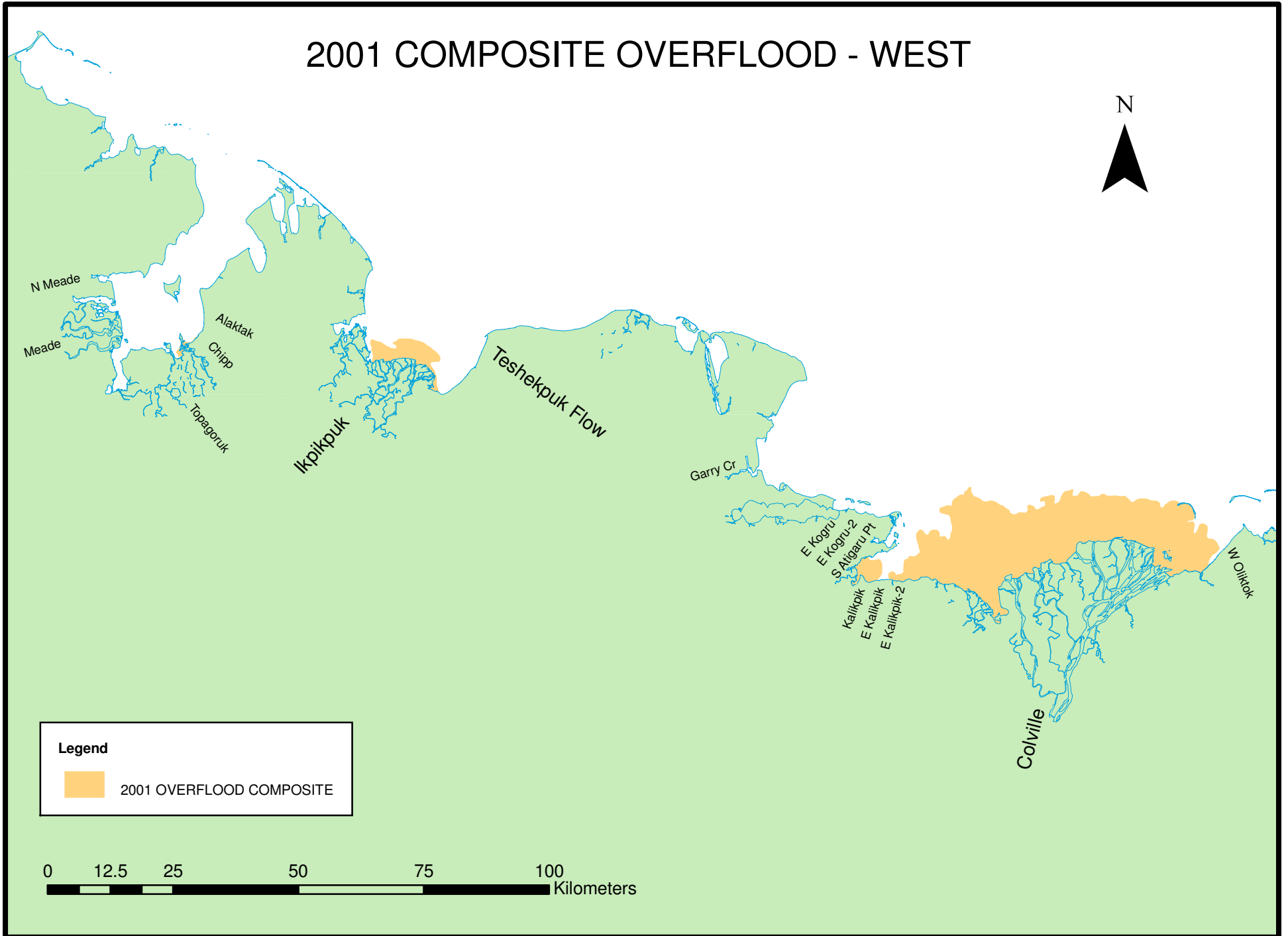
 2000 OVERFLOOD COMPOSITE



2000 OVERFLOOD COMPOSITE - EAST



2001 COMPOSITE OVERFLOOD - WEST

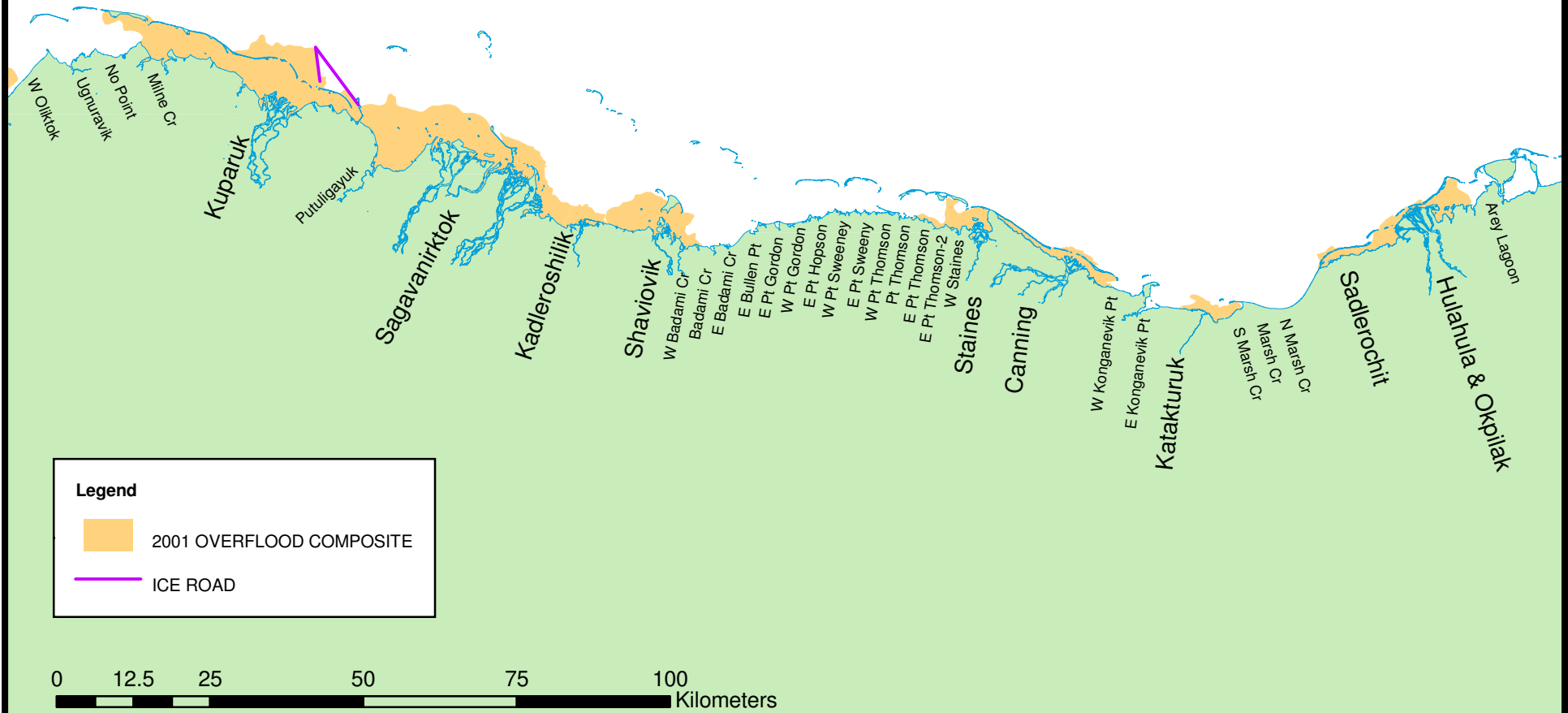


Legend

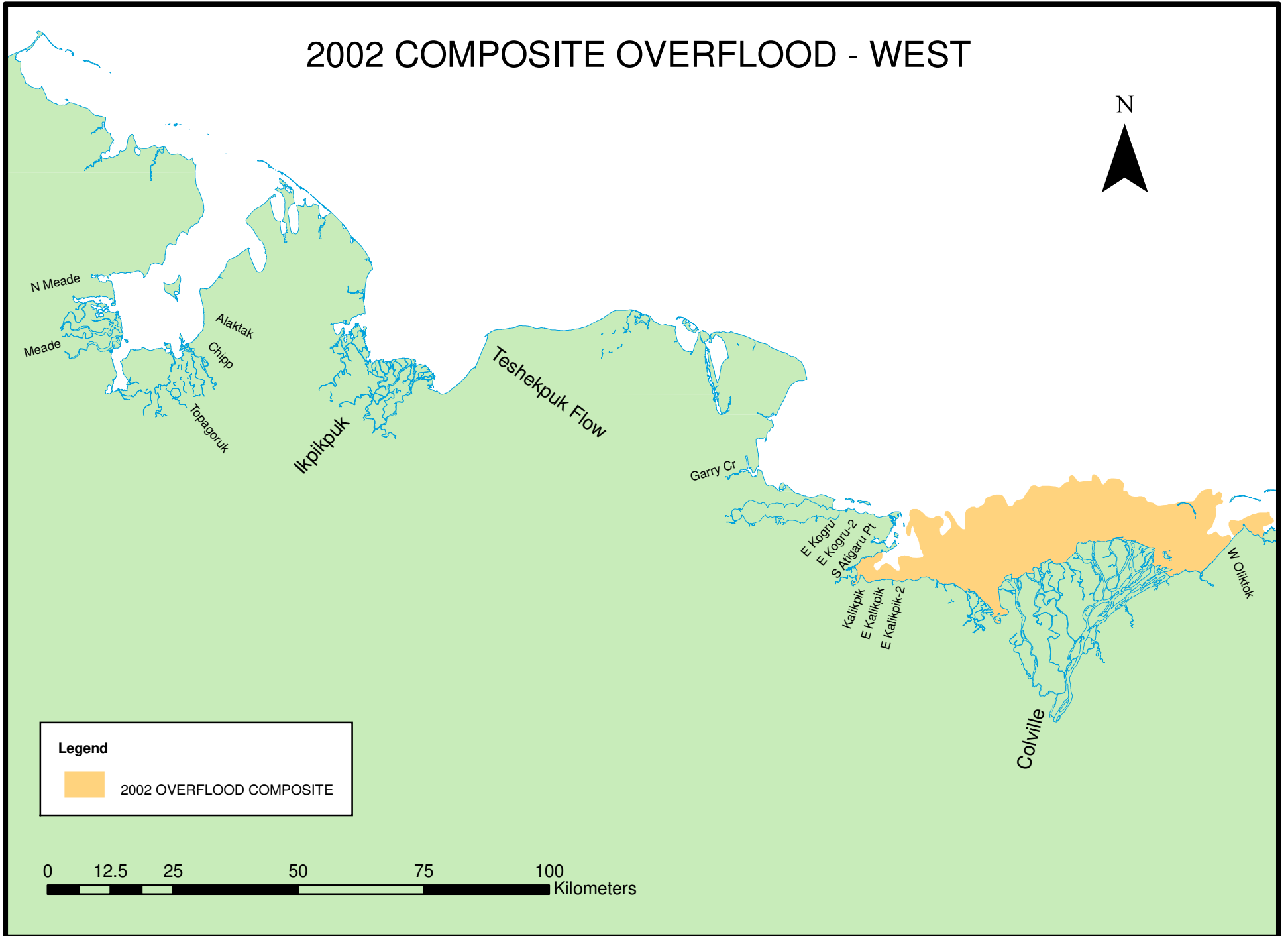
 2001 OVERFLOOD COMPOSITE

0 12.5 25 50 75 100
Kilometers


2001 OVERFLOOD COMPOSITE - EAST



2002 COMPOSITE OVERFLOOD - WEST

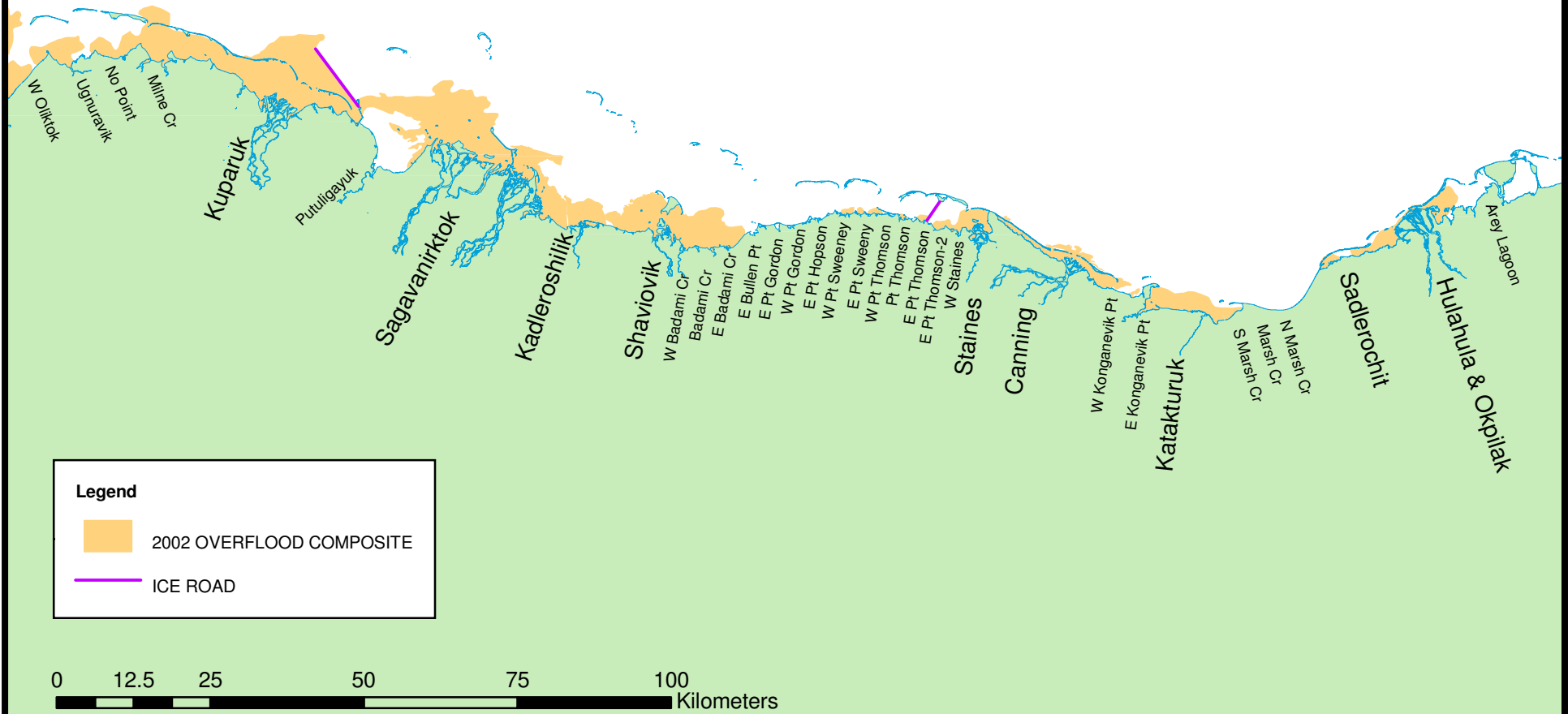


Legend

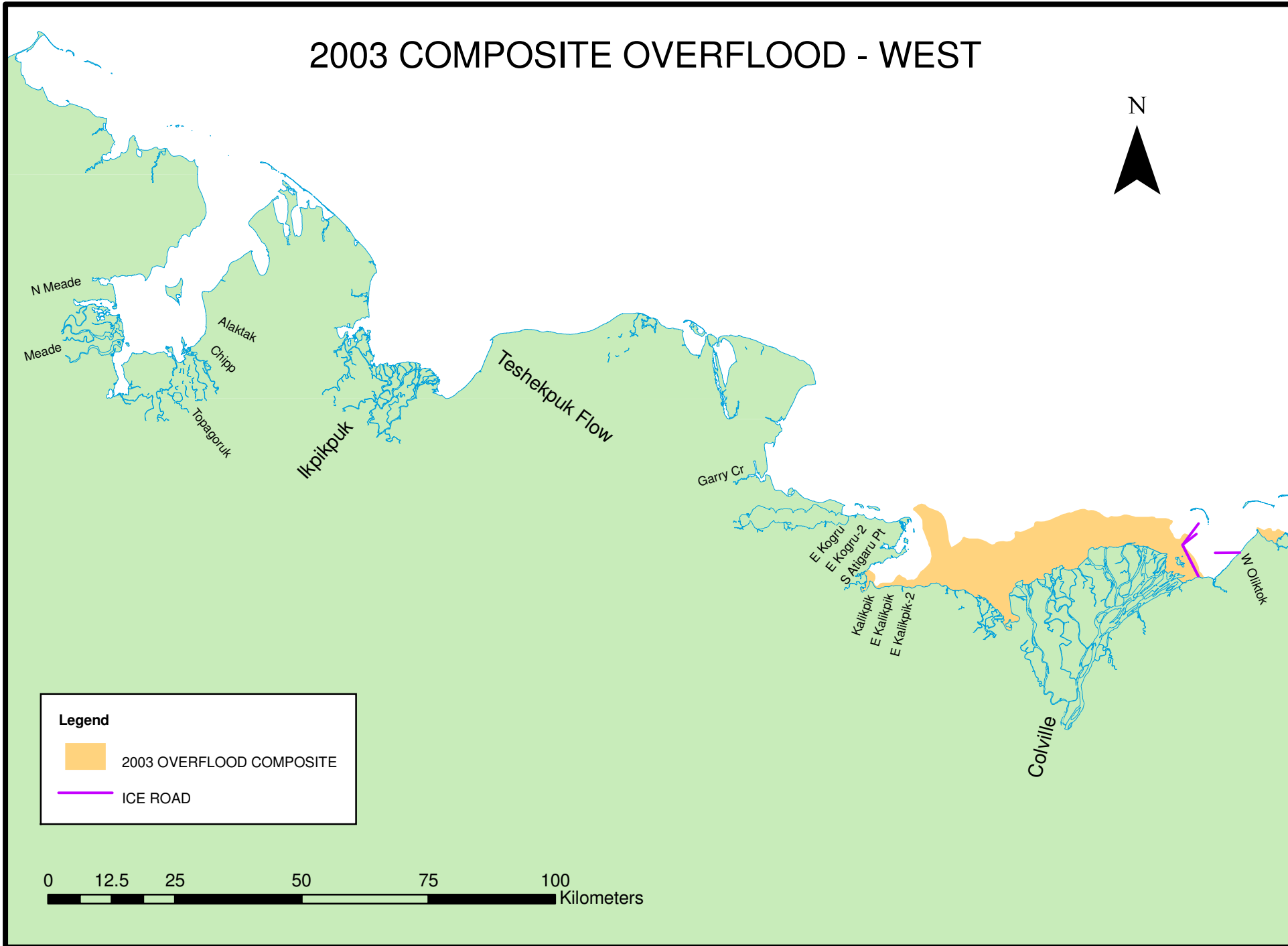
 2002 OVERFLOOD COMPOSITE



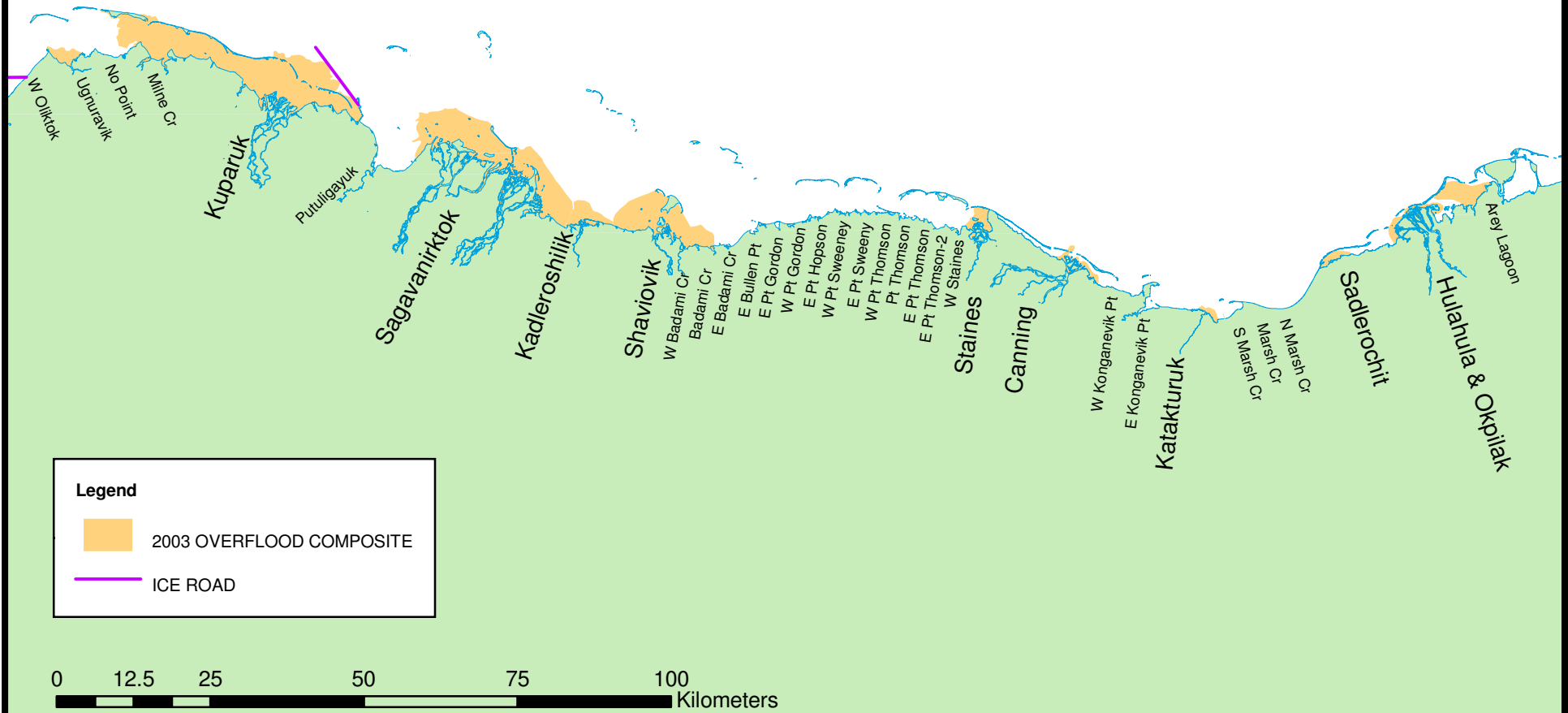
2002 OVERFLOOD COMPOSITE - EAST



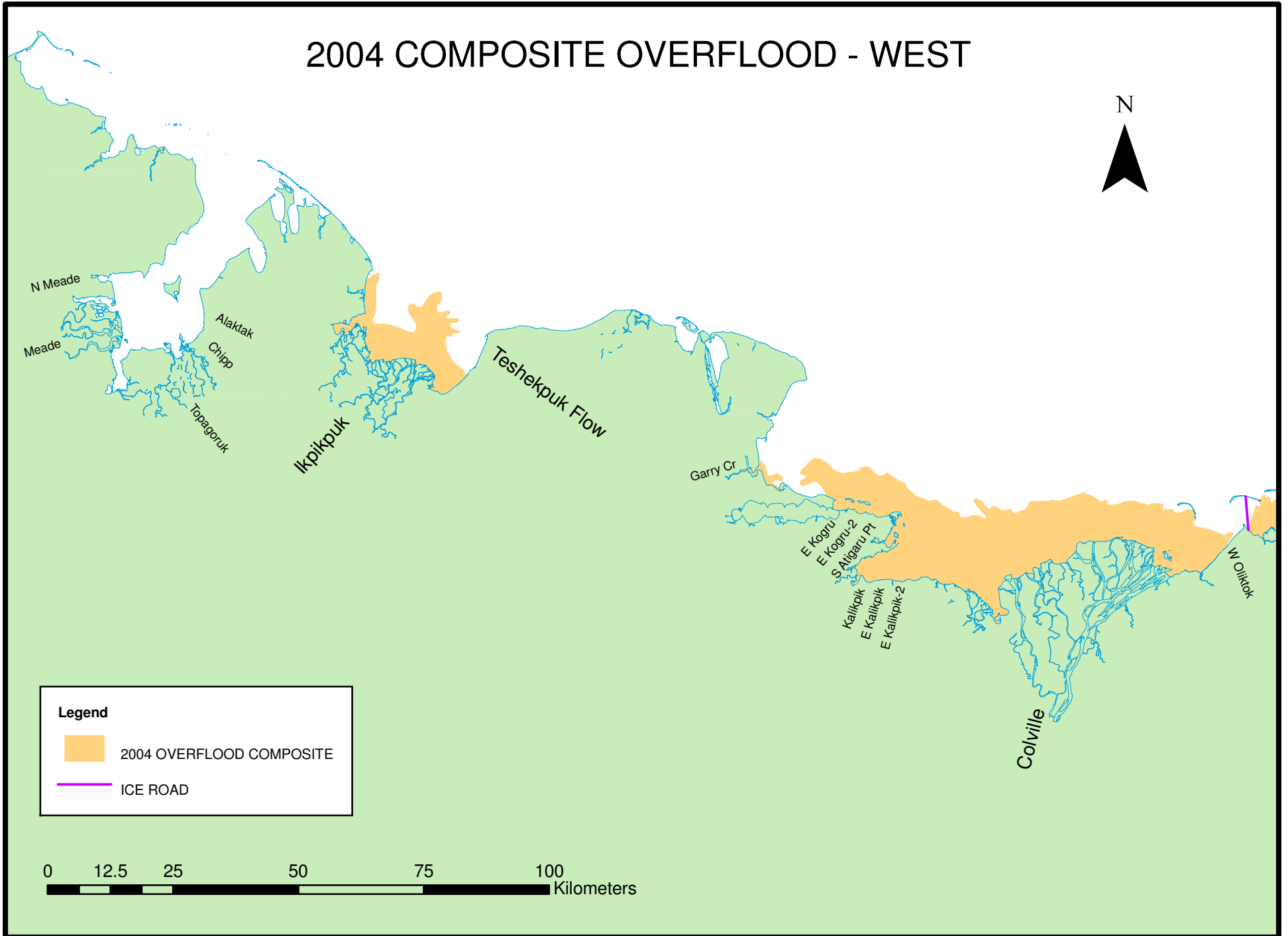
2003 COMPOSITE OVERFLOOD - WEST



2003 OVERFLOOD COMPOSITE - EAST



2004 COMPOSITE OVERFLOOD - WEST



N Meade
Meade
Alaktak
Chipp
Topagoruk

Ikpiqpuk

Teshekpuk Flow



Garry Cr

E Kogru
E Kogru-2
S Atigaru Pt
Kallikpik
E Kallikpik
E Kallikpik-2

Colville

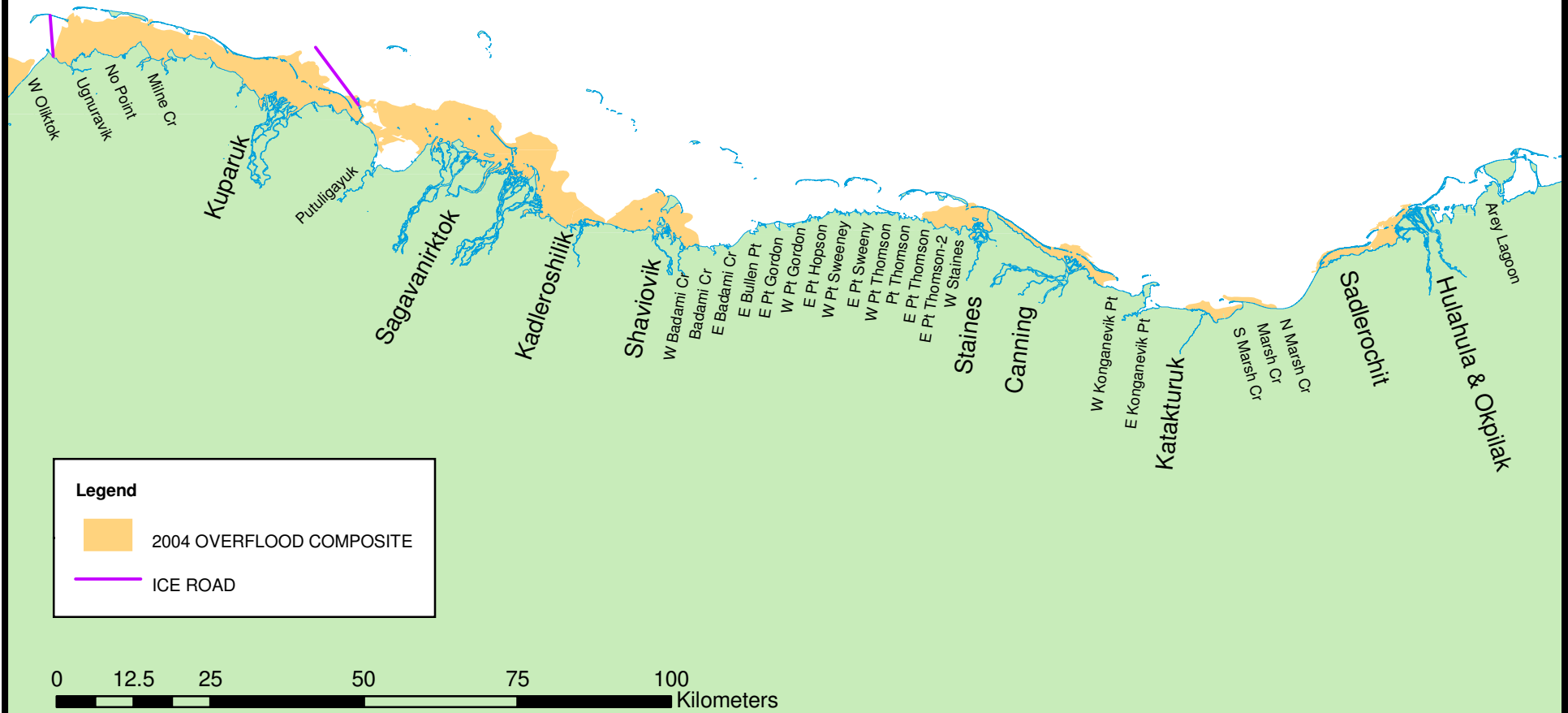
W Olltok

Legend

-  2004 OVERFLOOD COMPOSITE
-  ICE ROAD



2004 OVERFLOOD COMPOSITE - EAST



2005 COMPOSITE OVERFLOOD - WEST



N Meade

Meade

Alaktak

Chipp

Topagoruk

Ikpikpuk

Teshkepuk Flow

Garry Cr

E Kogru

E Kogru-2

S Atigaru Pt

Kalikpik

E Kalikpik

E Kalikpik-2

W Olltok

Colville

Legend



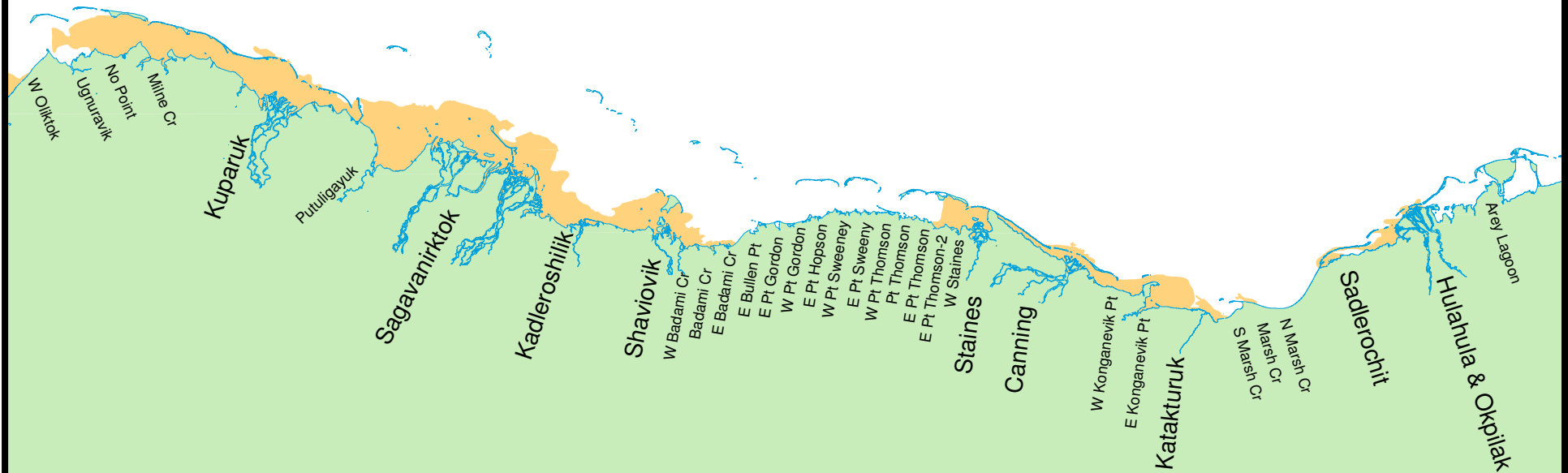
2005 OVERFLOOD COMPOSITE




ICE ROAD



2005 OVERFLOOD COMPOSITE - EAST

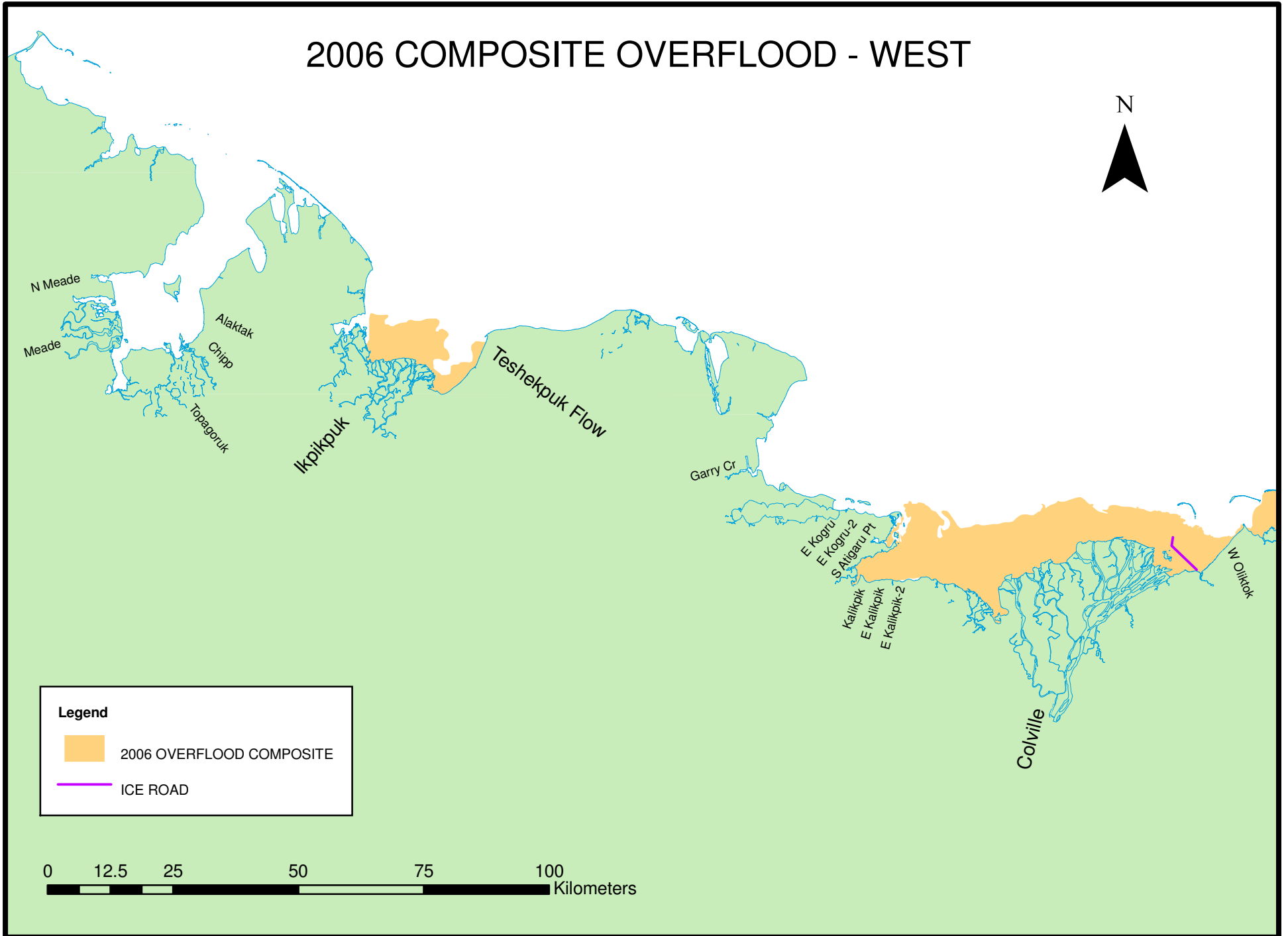


Legend

 2005 OVERFLOOD COMPOSITE



2006 COMPOSITE OVERFLOOD - WEST

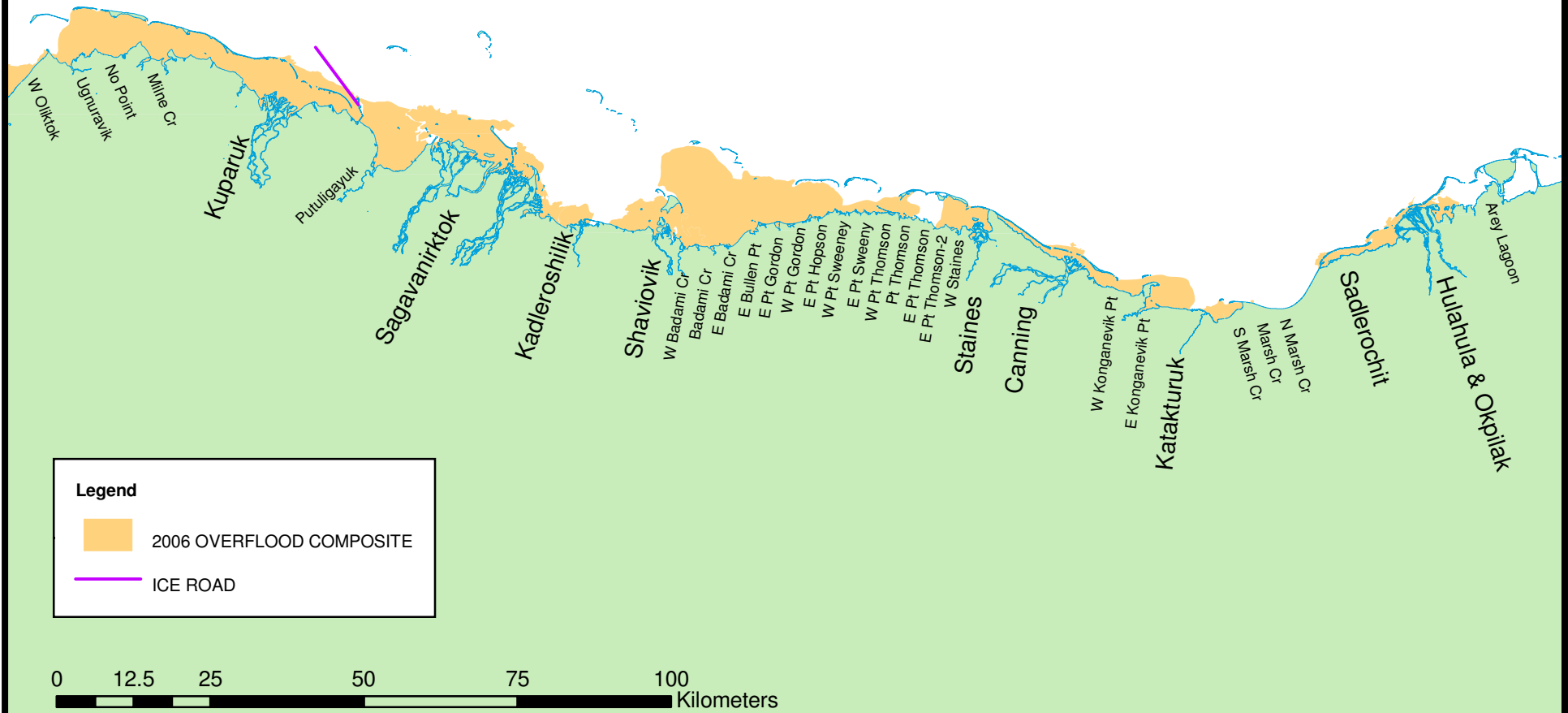


Legend

- 2006 OVERFLOOD COMPOSITE
- ICE ROAD



2006 OVERFLOOD COMPOSITE - EAST



2007 COMPOSITE OVERFLOOD - WEST



N Meade

Meade

Alaktak
Chipp

Topagoruk

Ikpikpuk

Teshkepuk Flow

Garry Cr

E Kogru

E Kogru-2

S Atigaru Pt

Kalikpik



E Kalikpik

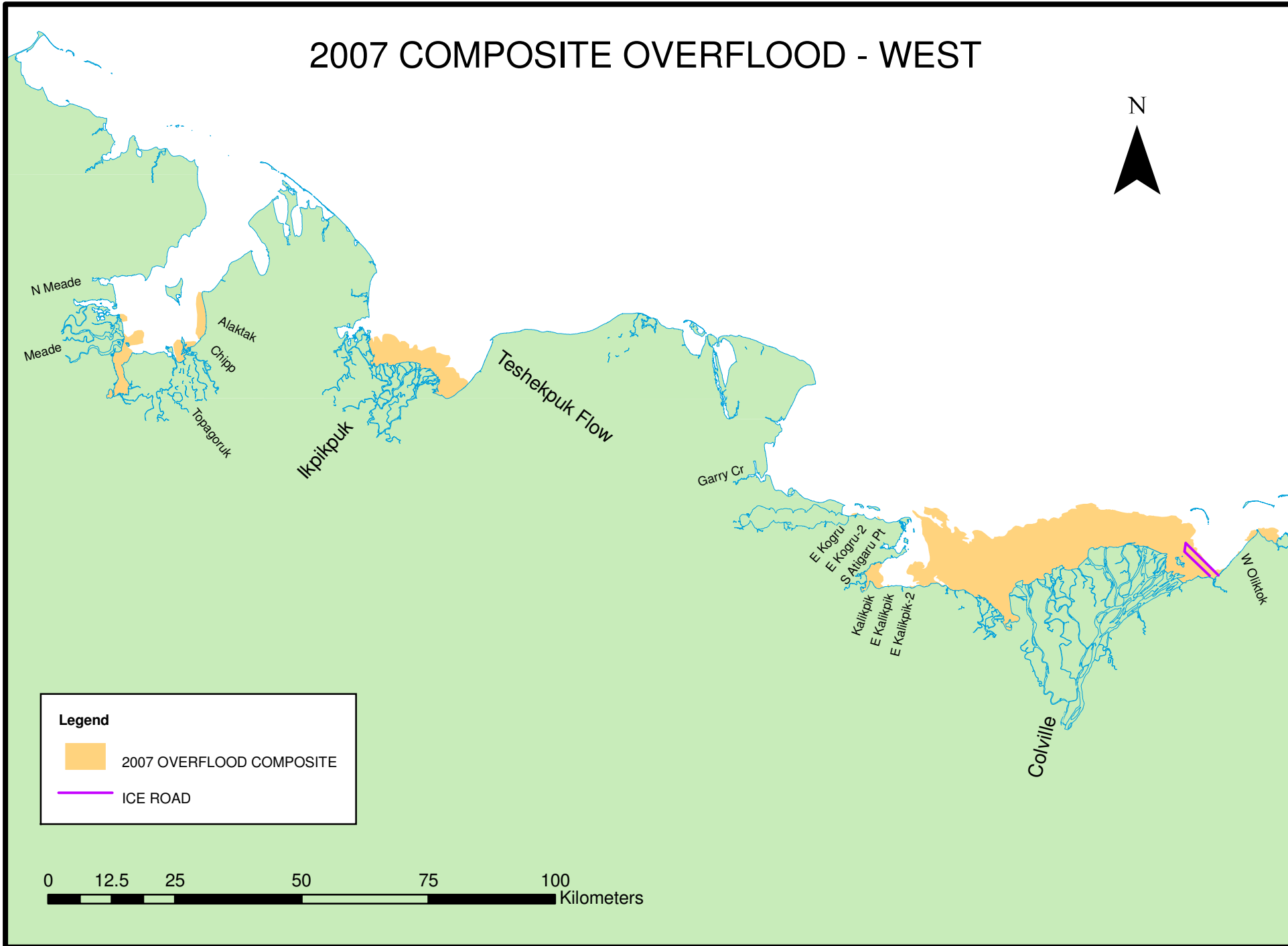
E Kalikpik-2

Colville

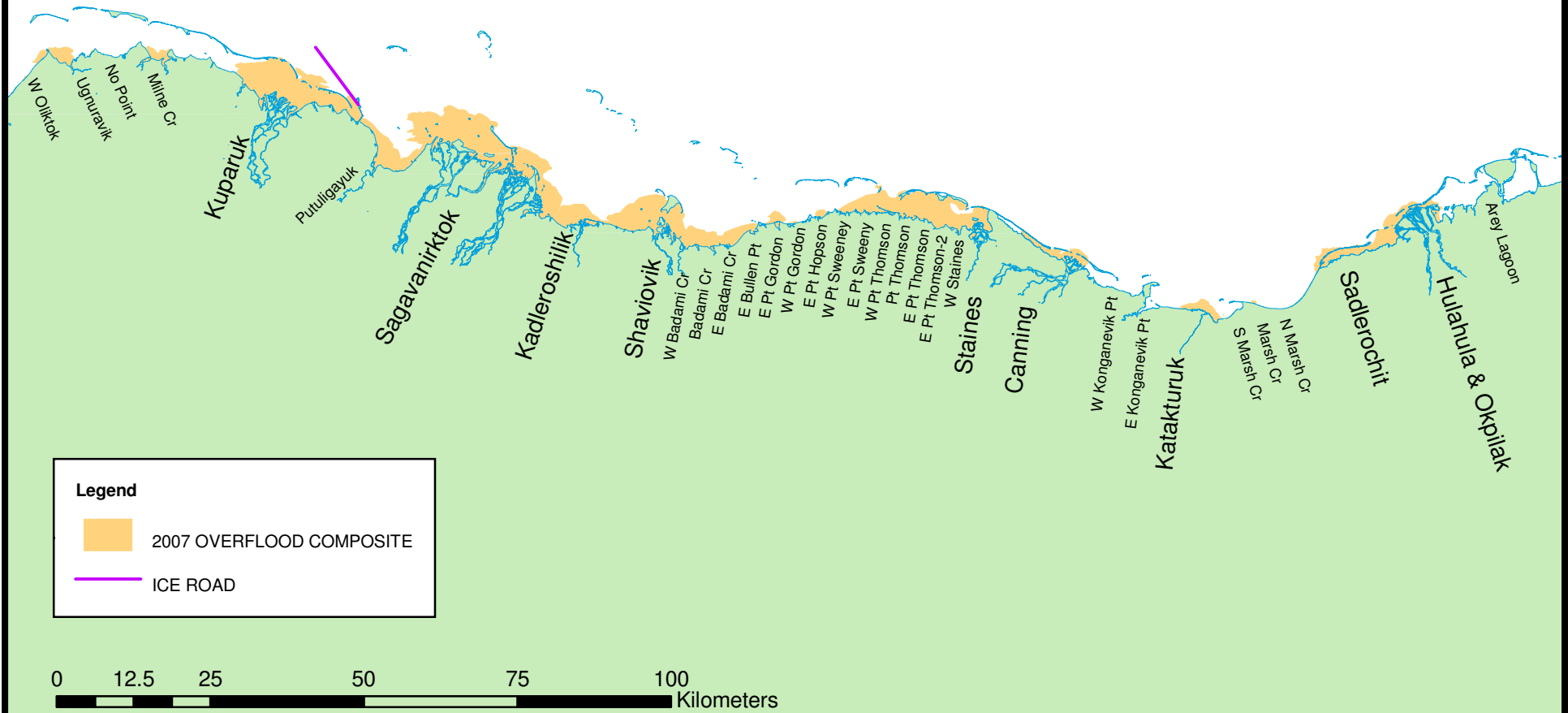
W Olltok

Legend

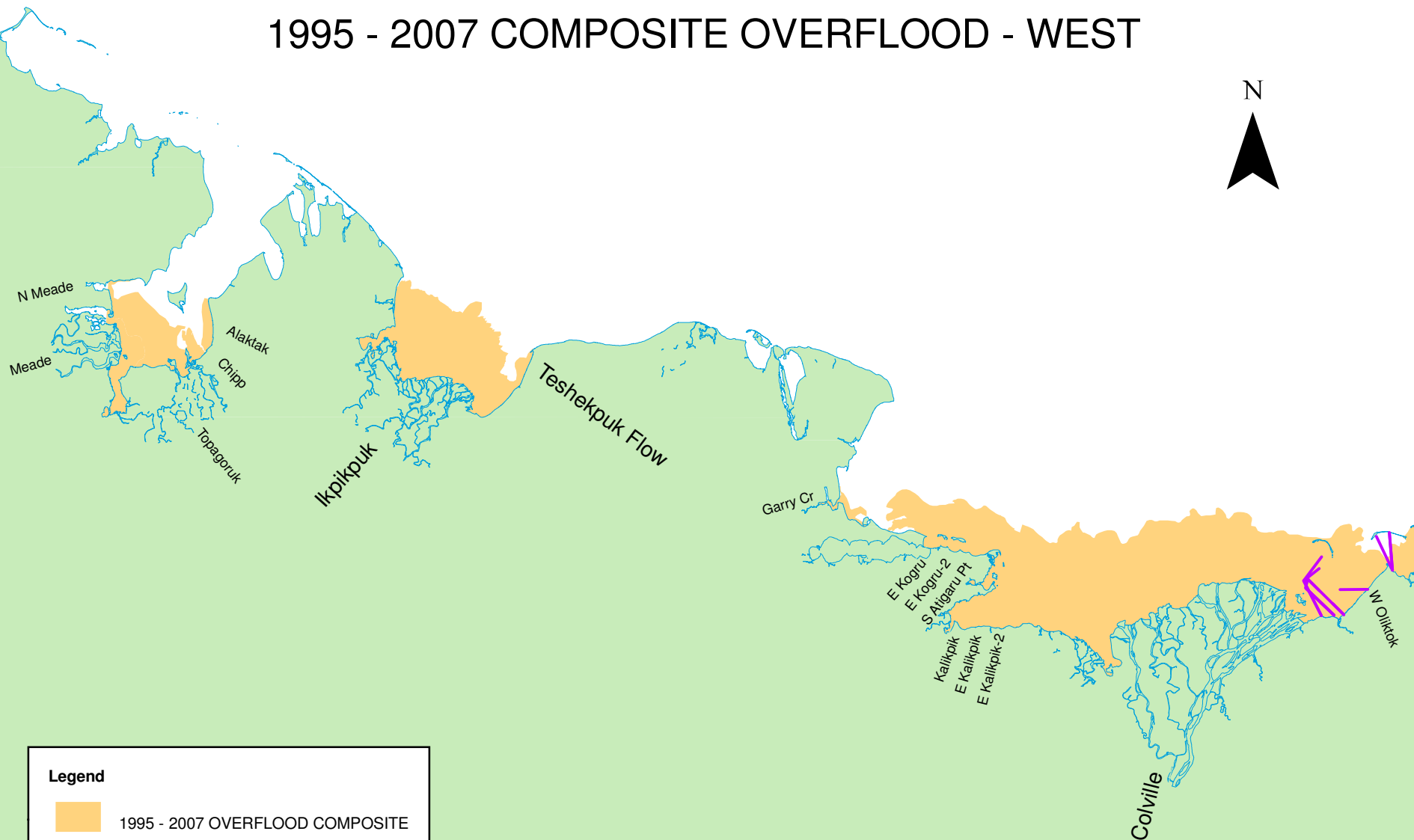
-  2007 OVERFLOOD COMPOSITE
-  ICE ROAD





2007 OVERFLOOD COMPOSITE - EAST

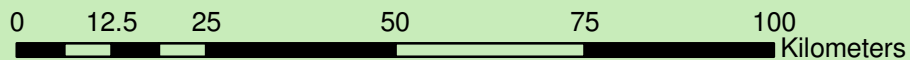


1995 - 2007 COMPOSITE OVERFLOOD - WEST

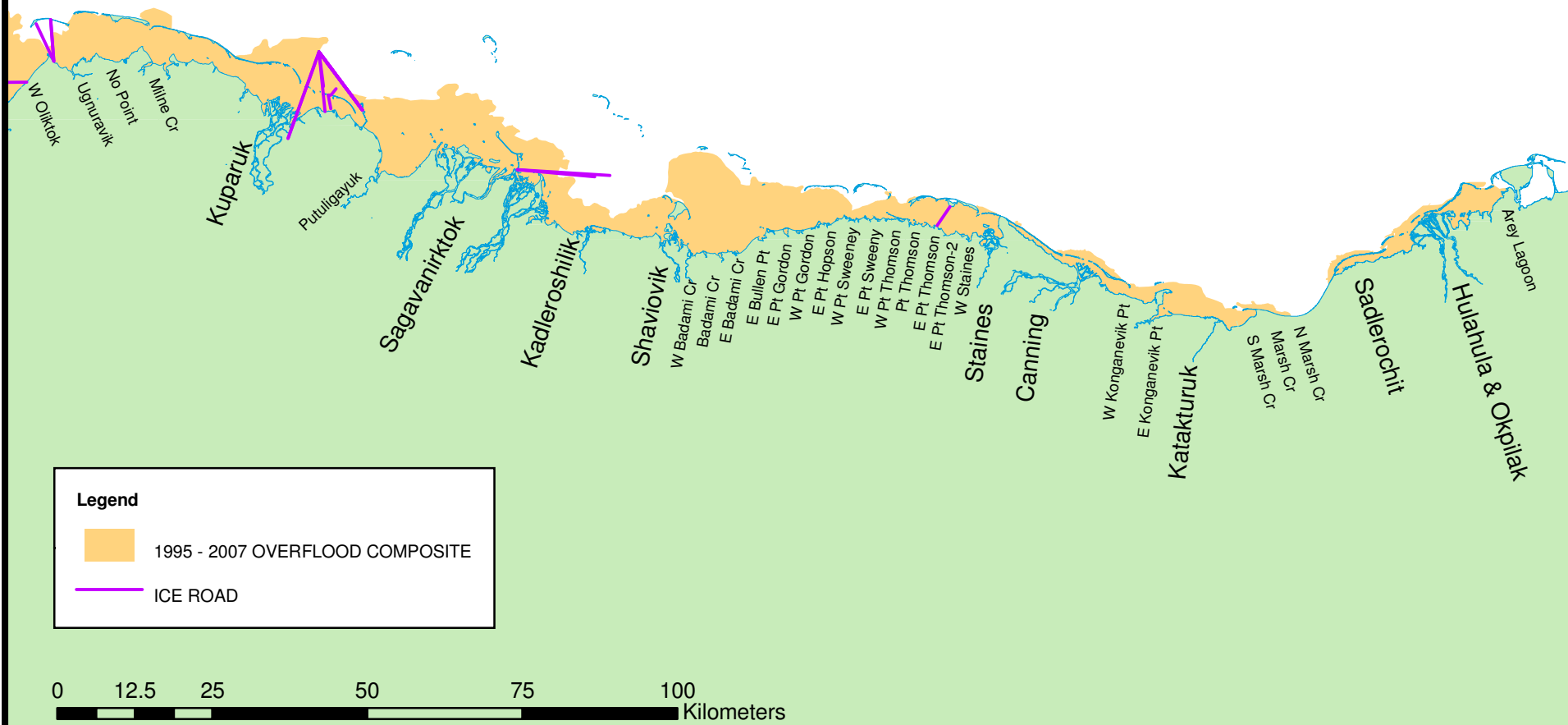


Legend

-  1995 - 2007 OVERFLOOD COMPOSITE
-  ICE ROAD



1995 - 2007 OVERFLOOD COMPOSITE - EAST



Legend

- 1995 - 2007 OVERFLOOD COMPOSITE
- ICE ROAD

