



Update on BOEM's Offshore Renewable Energy Program

Maureen A. Bornholdt

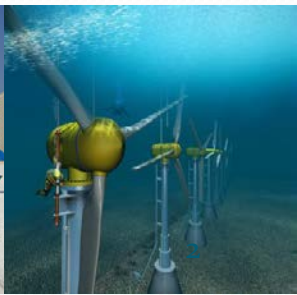
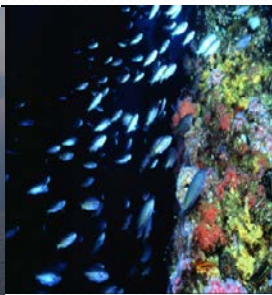
April 8, 2014

Program Manager
Office of Renewable Energy Programs
Bureau of Ocean Energy Management



Bureau of Ocean Energy Management

Oversees development of the nation's oil and gas, renewable energy, and other mineral and energy resources on the Outer Continental Shelf



BOEM's Staged Offshore Wind Authorization Process

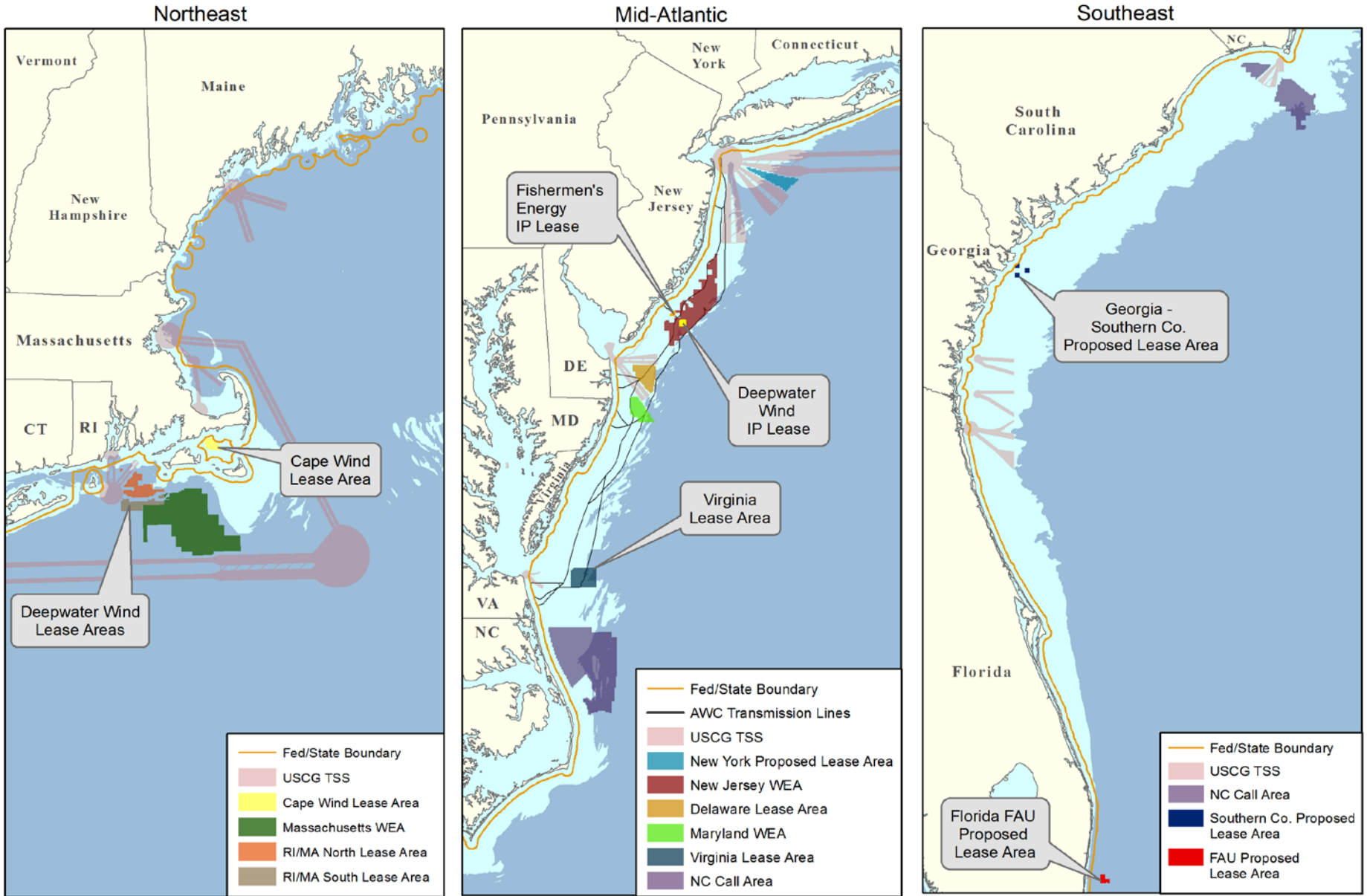
1 - Planning and Analysis

2 - Leasing

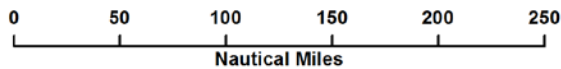
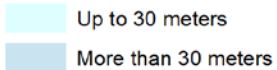
3 - Site Assessment

4 - Construction and Operations

Atlantic OCS Renewable Energy - Massachusetts to Florida

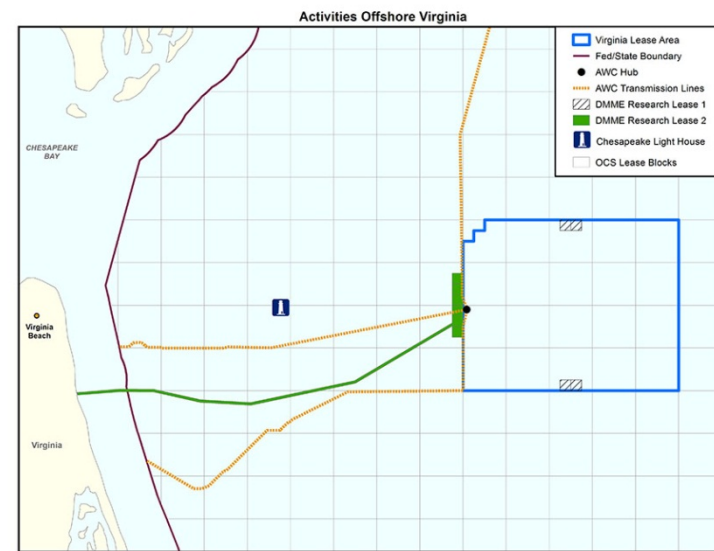
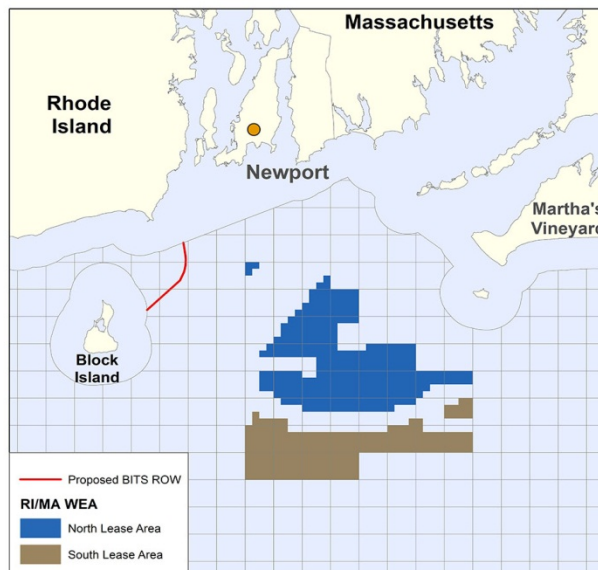


Bathymetry



Recent Offshore Wind Lease Sales

- BOEM held its first two offshore wind lease sales in 2013:
 - Rhode Island/Massachusetts - 2 leases issued to Deepwater Wind
 - Virginia - 1 lease issued to Dominion Virginia Power



Planning and Leasing Activities

Northeast

Recent:

- Maine – Application from StatOil withdrawn in **Nov. 2013**.
- Massachusetts – NREL completed assessment of options for wind leasing areas.
- Rhode Island/Massachusetts - Held auction for commercial leasing for wind power in **July 2013**.
- New York - Published Request for Interest (RFI) in **Jan. 2013**.

Upcoming:

- Publish Proposed Sale Notice (PSN) for MA WEA.
- RI/MA SAPs due **Apr. 2014**, DWW has requested an extension.
- Publish Call for Information and Nominations (Call) for NY area.

Planning and Leasing Activities

Mid-Atlantic

Recent:

- New Jersey – NREL completed assessment of options for wind leasing areas.
- Delaware - Issued a commercial wind lease in [Nov. 2012](#), received SAP in [Nov. 2013](#).
- Maryland – Published PSN in [Dec. 2013](#).
- Virginia -
 - Published DNCI for research lease area within VA commercial lease area in [Mar. 2013](#).
 - Held auction for commercial leasing for wind power off VA in [Sept. 2013](#).
 - Published DNCI for research lease area outside VA commercial lease area in [Dec. 2013](#), held EA scoping meeting in [Apr. 2014](#).

Planning and Leasing Activities

Mid-Atlantic (cont'd)

Upcoming:

- Publish PSN for NJ WEA.
- Finish review of Delaware SAP and approve, approve with modifications, or disapprove.
- Publish FSN for MD WEA.
- Issue research leases for areas within and outside VA commercial lease area.
- VA commercial lease SAP due [May 2014](#).

Southeast

Recent:

- North Carolina - Published Call for areas offshore NC in [Dec. 2012](#).
- Georgia - Announced availability of Interim Policy (IP) lease Environmental Assessment (EA) for site assessment activities in [Apr. 2014](#).
- Florida - Finalized an EA and reached Finding of No Significant Impact for MHK technology testing offshore Florida in [Aug. 2013](#).

Planning and Leasing Activities

Southeast (cont'd)

Upcoming:

- Issue IP lease to Florida Atlantic University for MHK technology testing offshore Florida.
- Announce Area Identification establishing NC WEAs.
- Finalize GA IP lease EA.

Opportunities to Provide Input

- Task Force public Q&A sessions
- NEPA scoping meetings and hearings
- *Federal Register* notices:
 - Request for Interest (RFI); Notice of Proposed Lease Area and Request for Competitive Interest (RFCI); Call for Information and Nominations (Call); Proposed Sale Notice (PSN)
 - Notice of Intent (NOI) to prepare a NEPA document; draft NEPA document



Questions?

Thank you!

Maureen A. Bornholdt
Maureen.Bornholdt@boem.gov
(703) 787-1300

Stage 1: Planning and Analysis

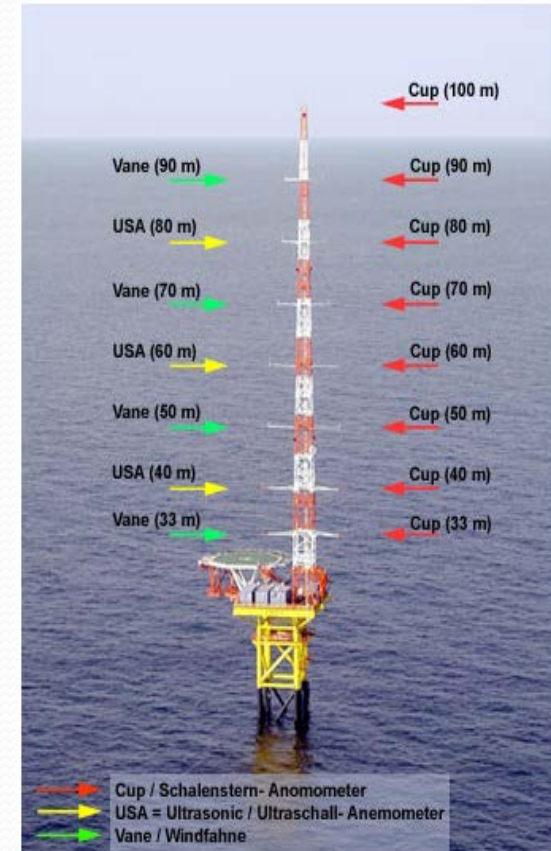
- Establish Intergovernmental Task Force, engage stakeholders
- Publish a Request for Information (RFI)/Call for Information and Nominations (Call)
- Announce Area Identification
- Conduct environmental compliance reviews

Stage 2: Leasing

- Publish leasing notices
 - Determination of No Competitive Interest (Noncompetitive)
 - Proposed and Final Sale Notices (Competitive)
- Issue Lease(s)
 - After environmental reviews are complete
 - Conveys right to submit plans for BOEM's approval
 - Negotiate with single developer (Noncompetitive)
 - Hold lease sale (Competitive)

Stage 3: Site Characterization and Assessment

- Lessee conducts surveys in the lease area (**site characterization**)
- If lessee intends to install a meteorological tower or buoy, it must submit a Site Assessment Plan (SAP) (**site assessment**) that BOEM must approve
- Lessee has up to 5 years to conduct these activities



Stage 4: Commercial Development

- Lessee must submit a Construction and Operations Plan (COP) in the first five years of the lease that BOEM must approve
- COP provides details of the proposed project (turbine layout, size, etc.)
- Operations term is typically 25 years

