

Status Update

*Department of Defense:
Assessment of Offshore Military Activities and
Wind Energy Development on the
Outer Continental Shelf*

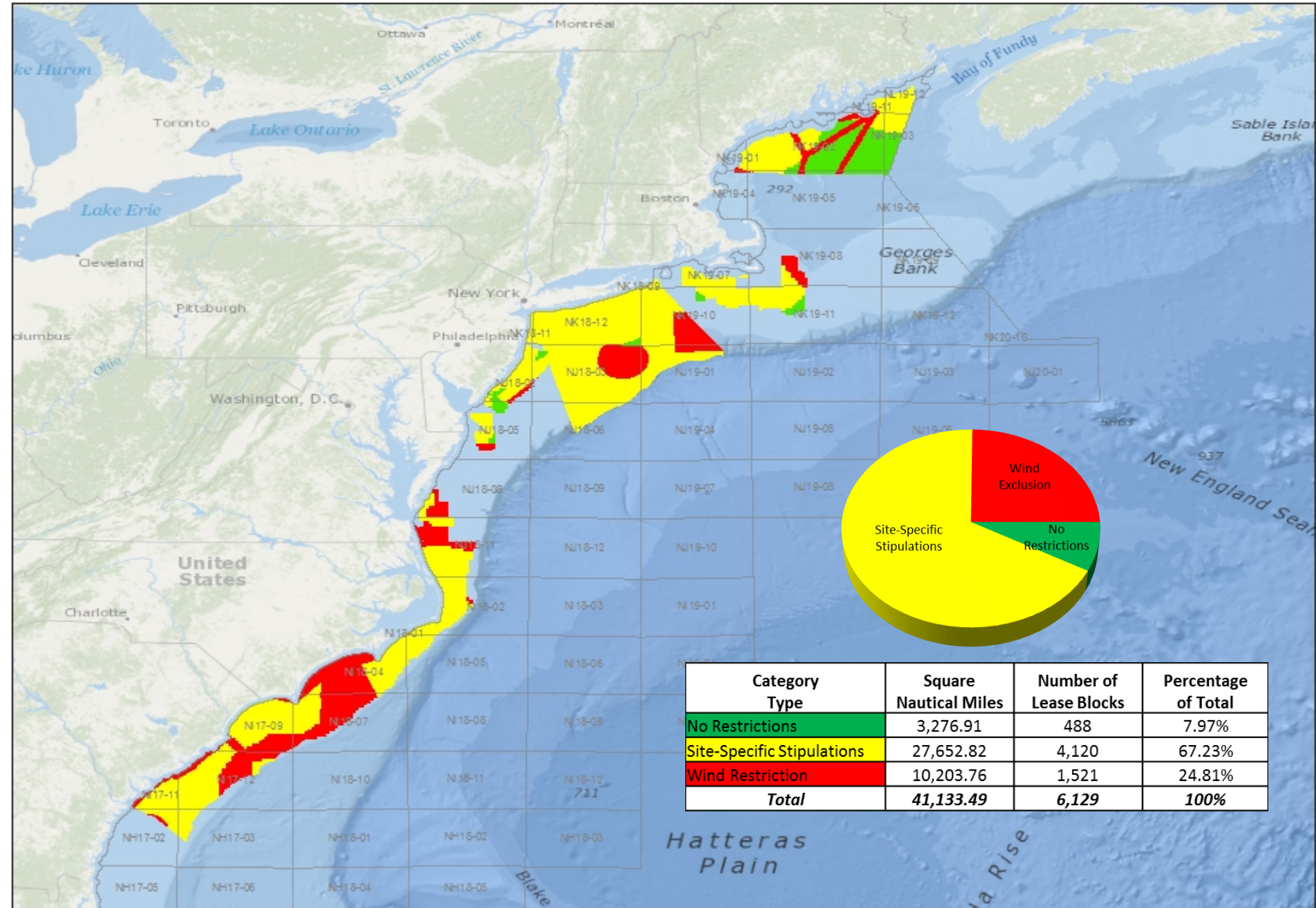
September 26, 2013
Hyatt Regency Long Island
Hauppauge, NY

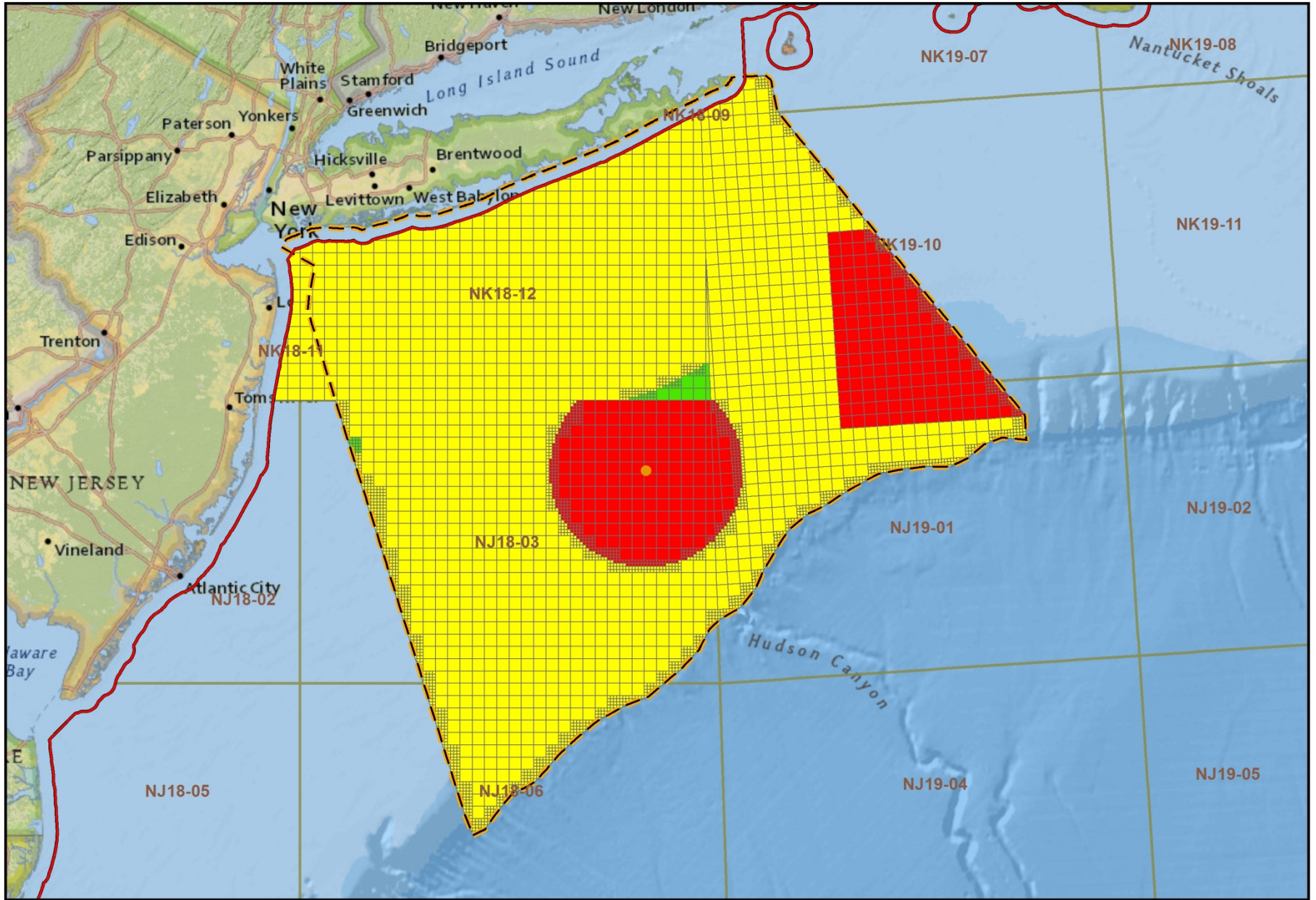


Methodology

- **Categorize DoD offshore equities and potential wind energy development using three categories:**
 - 1. Unrestricted**
 - 2. Site Specific Stipulations**
 - 3. Wind Energy Exclusion Area**
- **DoD Operating Areas (OPAREAs), warning areas, and radar line-of-sight ranges overlaid on BOEM lease block grid**
- **Extensive analysis and coordination process with the military services**

DoD Mission Compatibility Assessment: Atlantic Wind Summary





Questions?

Fred Engle
ODASD - Readiness
Office of the Secretary of Defense

frederick.engle@osd.mil

703-693-3478