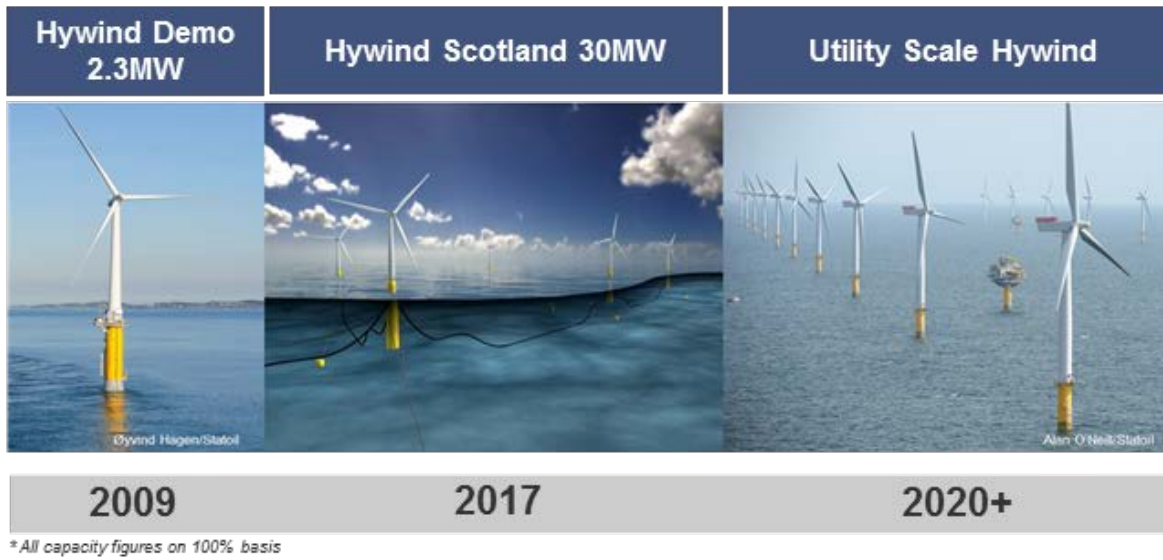




equinor

# Equinor Wind US Intergovernmental Renewable Energy Task Force for the New York Bight

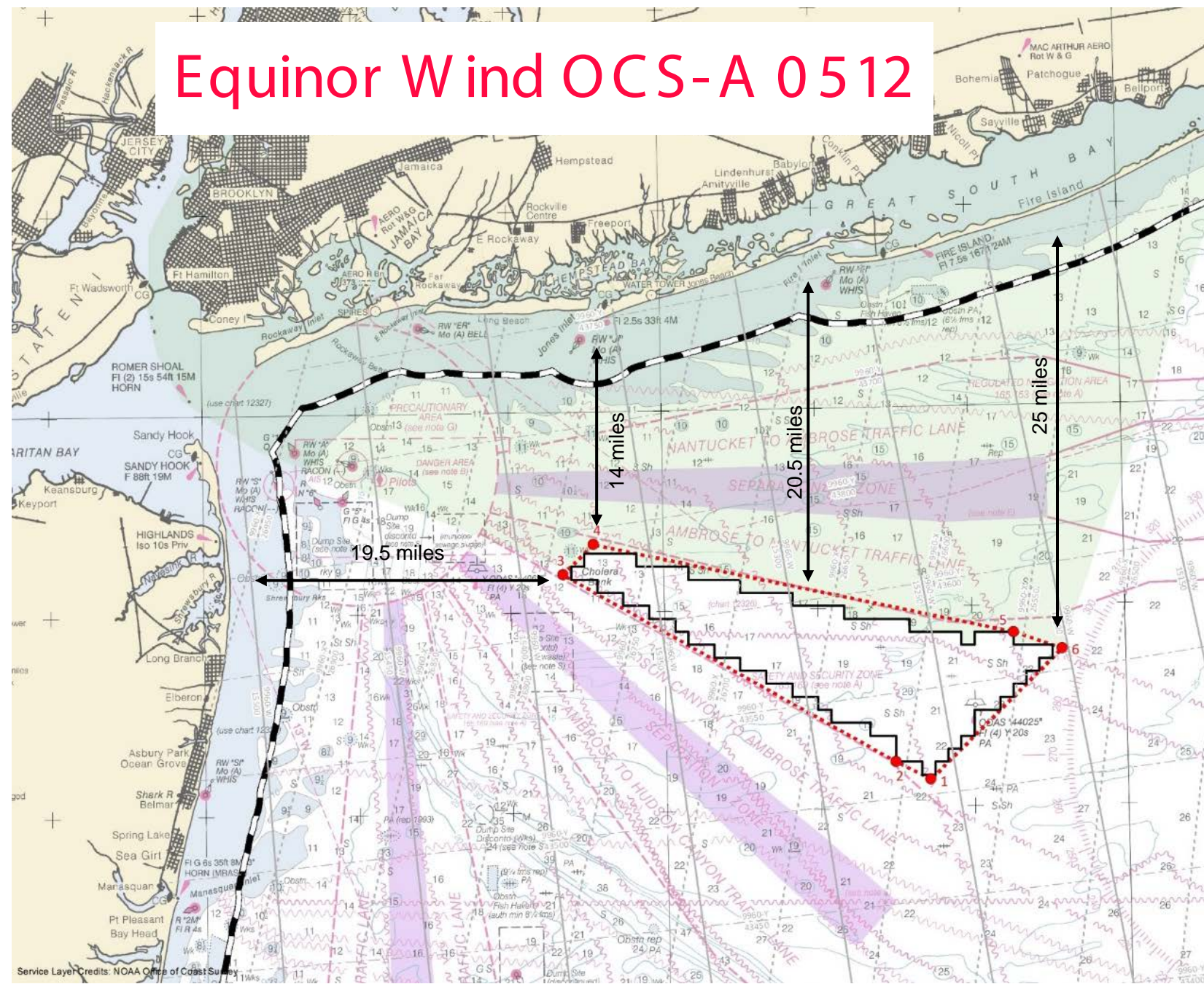
November 28, 2018



\*All capacity figures on 100% basis



# Equinor Wind OCS-A 0512

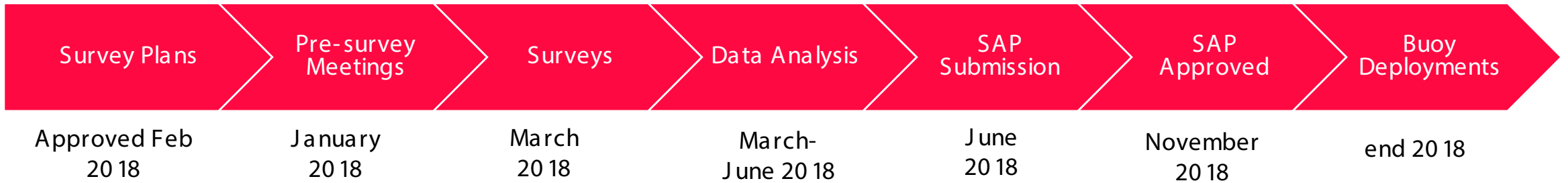


Site Key Data	
Area	80,000 acres
Water Depth	65-130 ft
Distance to shore	14 to 35 miles
Lease capacity	Up to 2GW
Est. Construction	2022-2023
Est. First Power	2024-2025

- Design envelope
- Potential phased development
- Interconnection to New York & New Jersey

# Schedules

## Site Assessment Plan (SAP)



## Construction & Operations Plan (COP), state & federal permits



*“Before we can build, we need a contract to sell our electricity”*

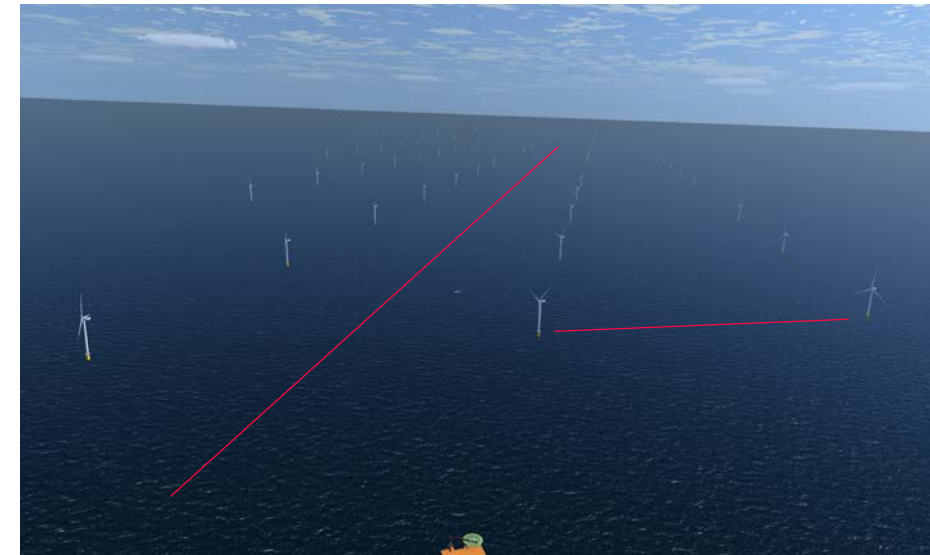
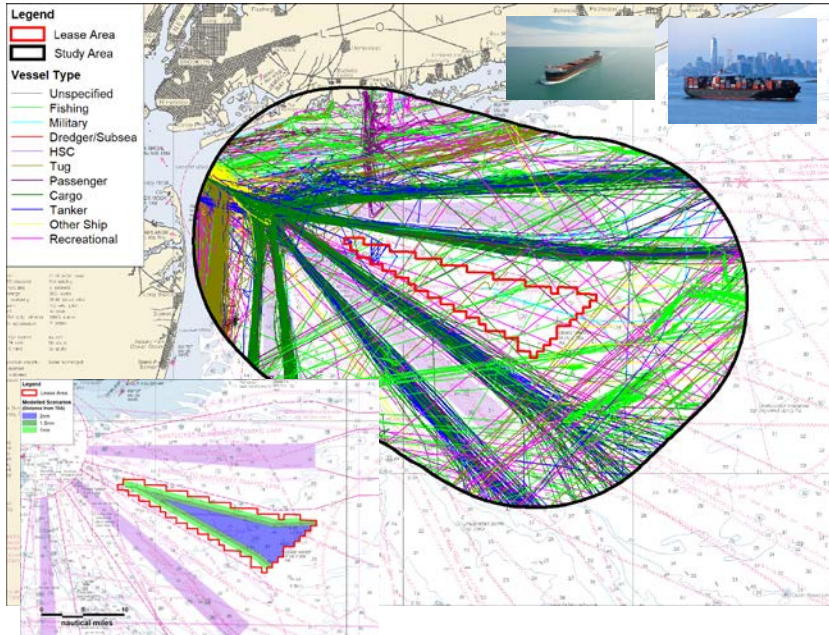
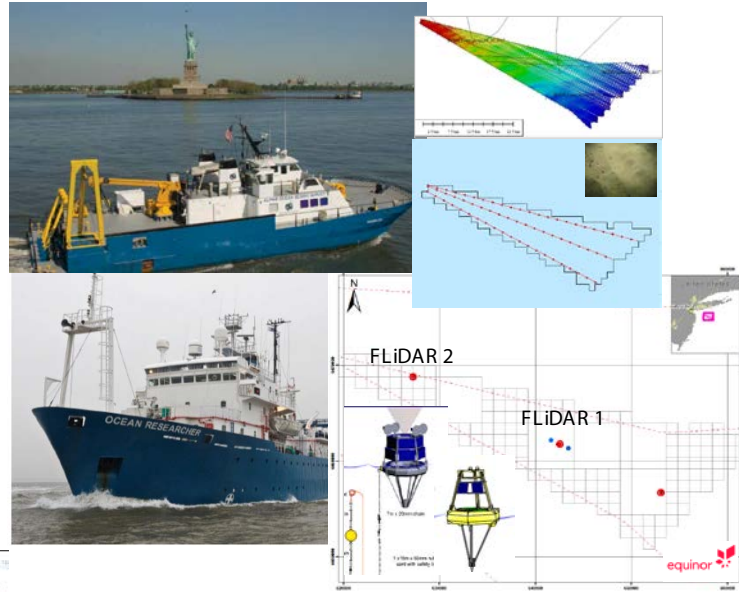
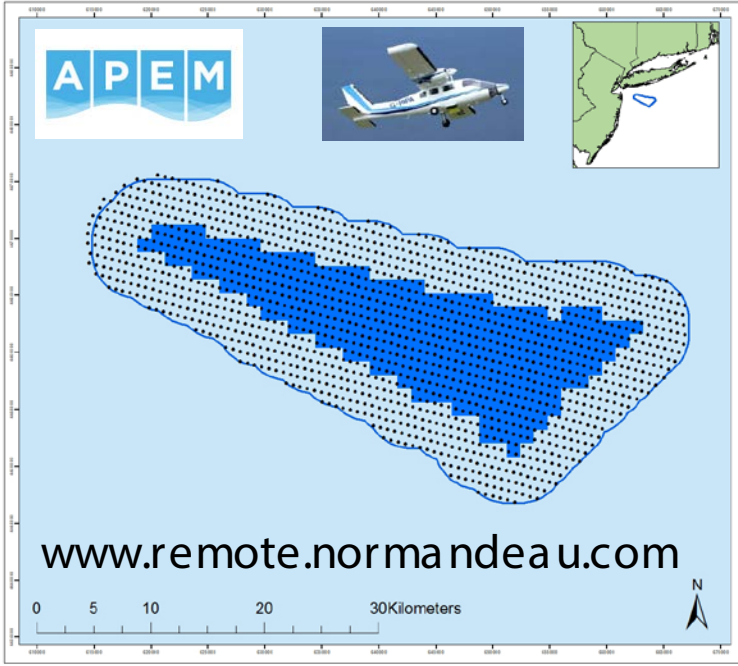


800MW New York State Offshore Wind Power Procurement February 2019



1100MW New Jersey State Offshore Wind Power Procurement December 2018

# Surveys, assessments & outreach



## Equinor Wind US

Julia Bovey, External Affairs  
jbov@equinor.com

Martin Goff, Environment & Permitting Offshore  
mgof@equinor.com

Laura Morales, Environment & Permitting Onshore  
lmora@equinor.com

Stephen Drew, Fisheries Liaison Officer  
sdrew@searisksolutions.com

© Equinor ASA

This presentation, including the contents and arrangement of the contents of each individual page or the collection of the pages owned by Equinor. Copyright to all material including, but not limited to, written material, photographs, drawings, images, tables and data remains the property of Equinor. All rights reserved. Any other use, reproduction, translation, adaptation, arrangement, alteration, distribution or storage of this presentation, in whole or in part, without the prior written permission of Equinor is prohibited. The information contained in this presentation may not be accurate, up to date or applicable to the circumstances of any particular case, despite our efforts. Equinor cannot accept any liability for any inaccuracies or omissions.