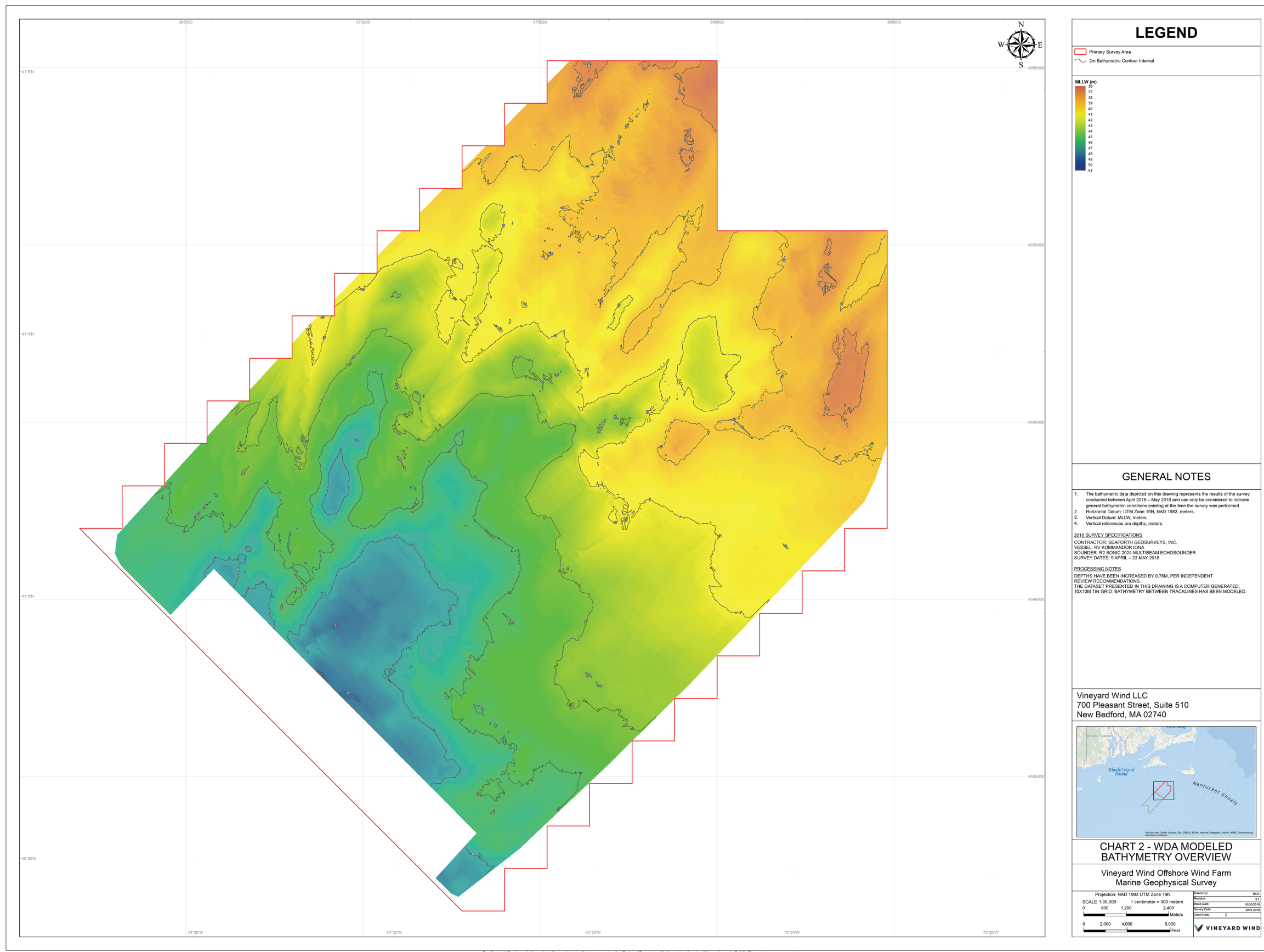
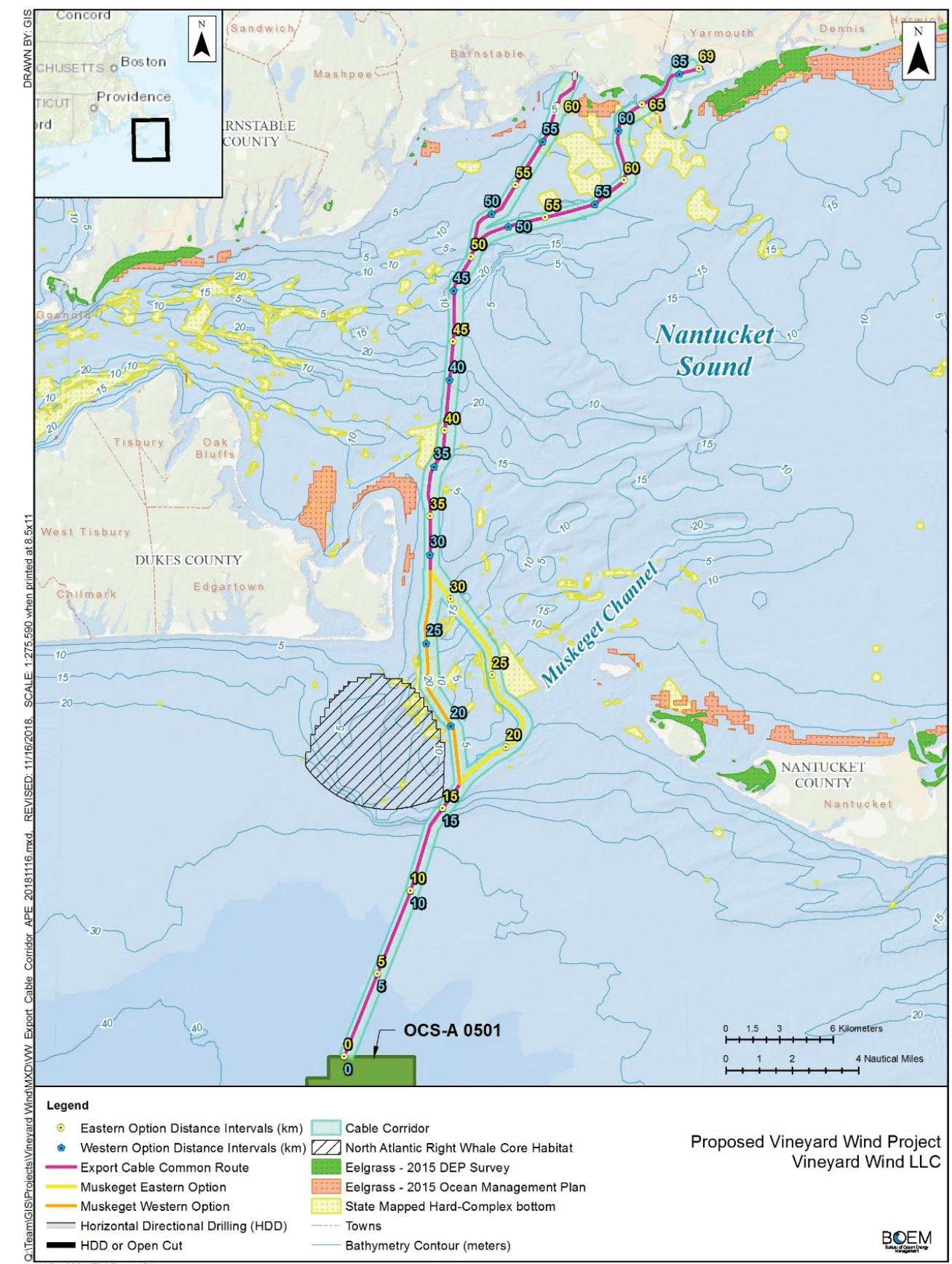




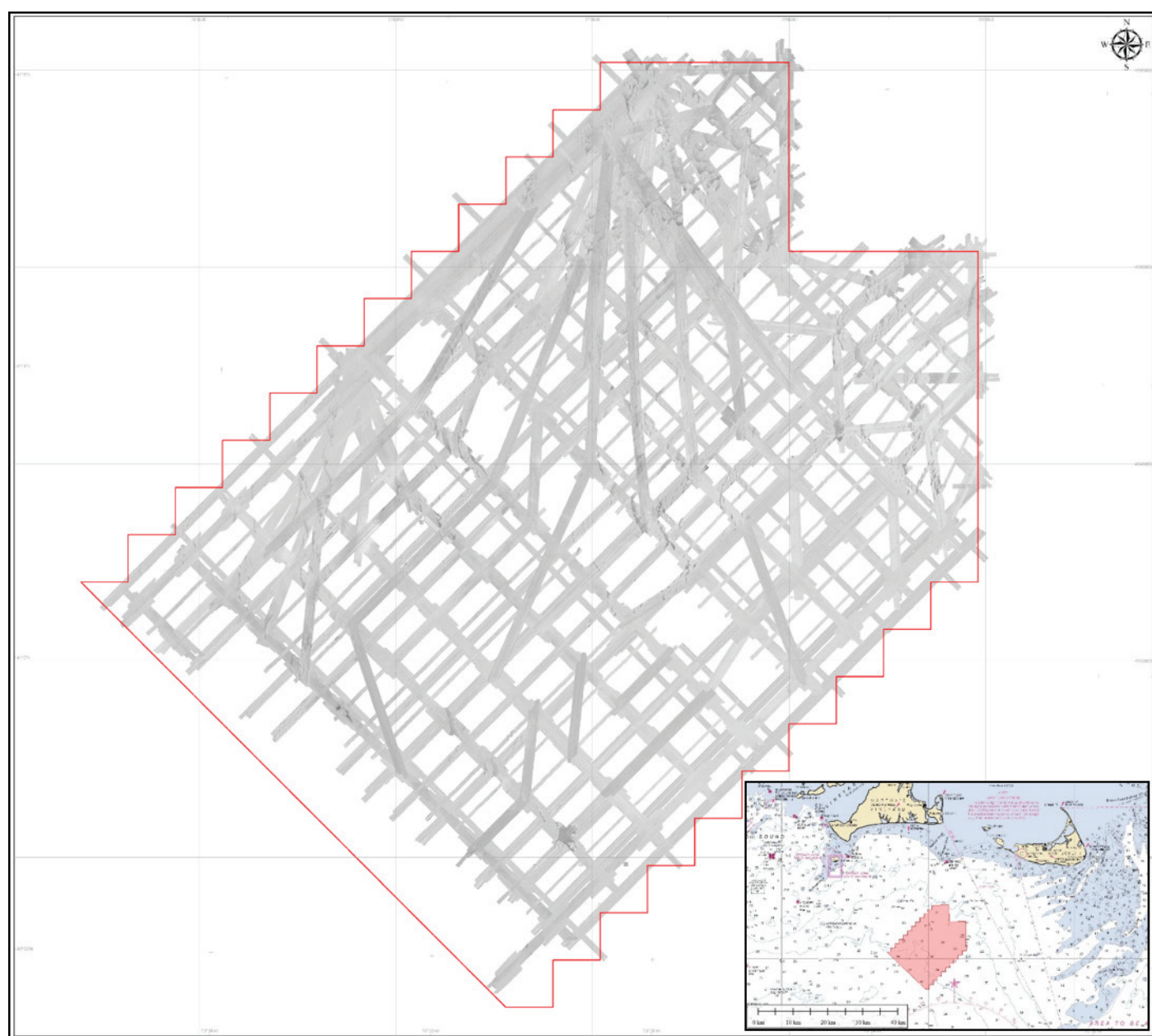
The Benthic Habitat



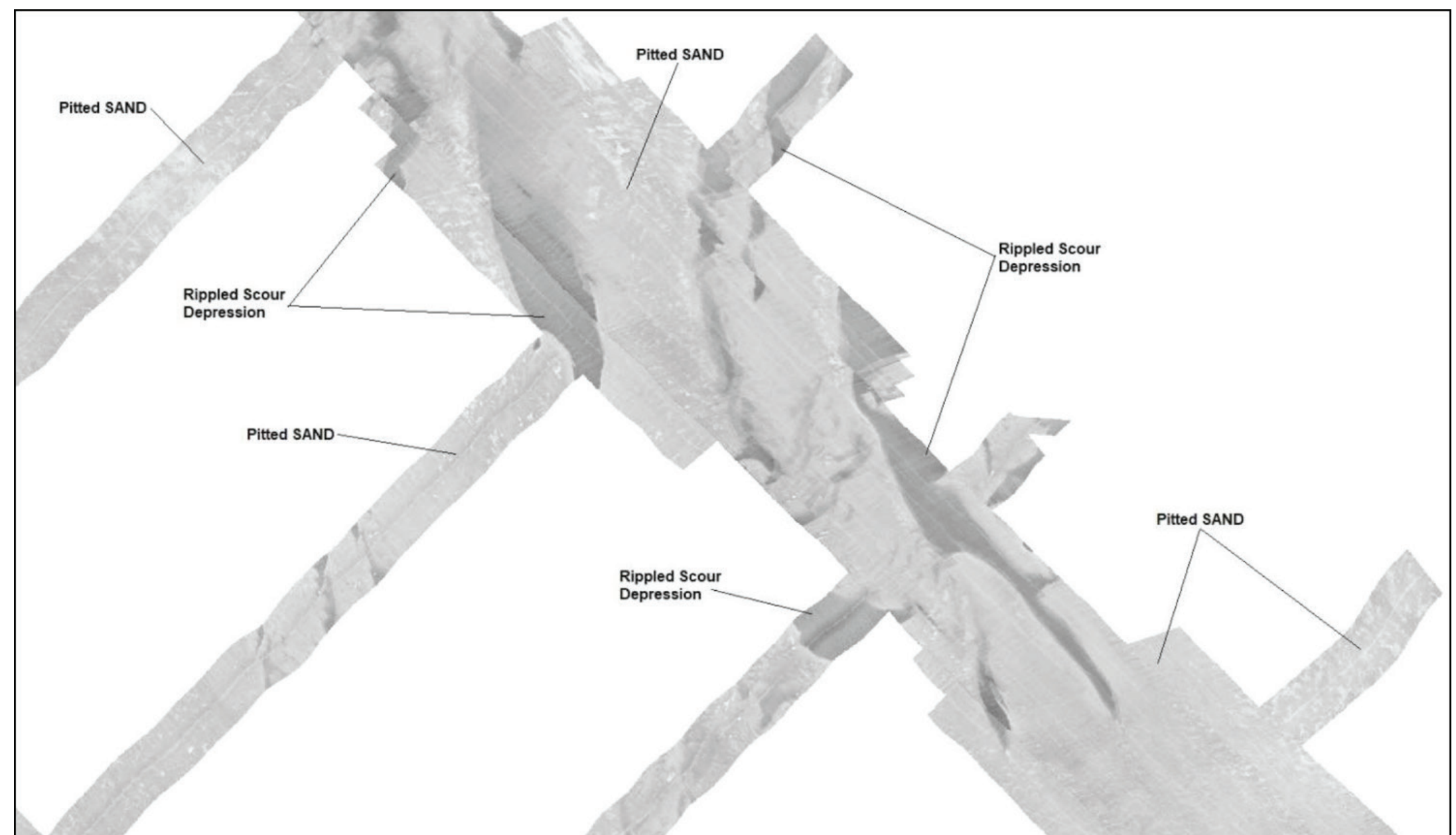
Wind Energy Area Bathymetry



Cable Route Benthic Habitat



Side scan sonar mosaic within the 501 North Wind Development Area (WDA). Overview inset to the right showing the WDA location south of Martha's Vineyard and Nantucket Island, MA.



The areas labeled "pitted sand" are characterized by isolated patches of low reflectivity that may contain slightly softer deposits with a higher silt concentration locally (*Image provided by Seaforth*). Darker areas represent the rippled scour depressions characterized by sand ripples and low relief megaripples.



Blue crab, scallop shell, branching red algae in Lewis Bay



Summer flounder in Nantucket Sound



Bread crumb sponge, red tufted algae in Muskeget Channel Offshore Export Cable Corridor (Eastern Option)



Burrowing anemones, sand dollars, and hermit crab in Atlantic Ocean QSE of Martha's Vineyard