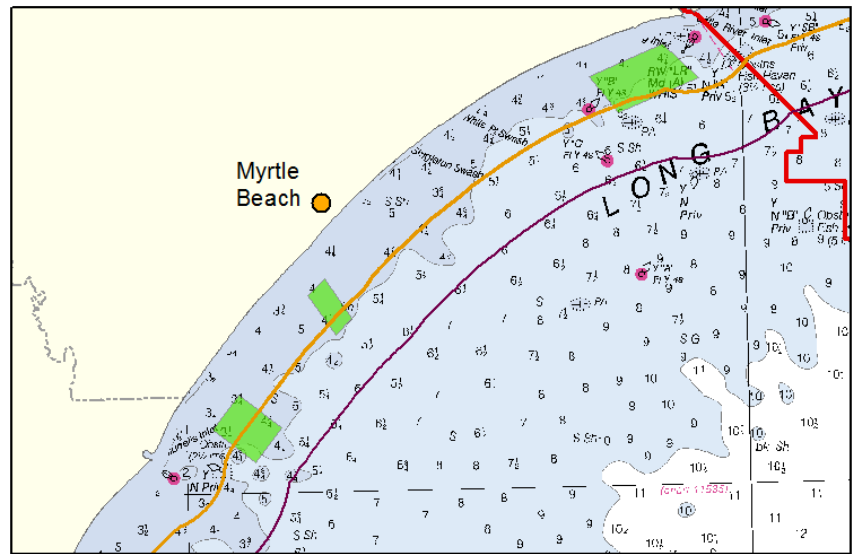
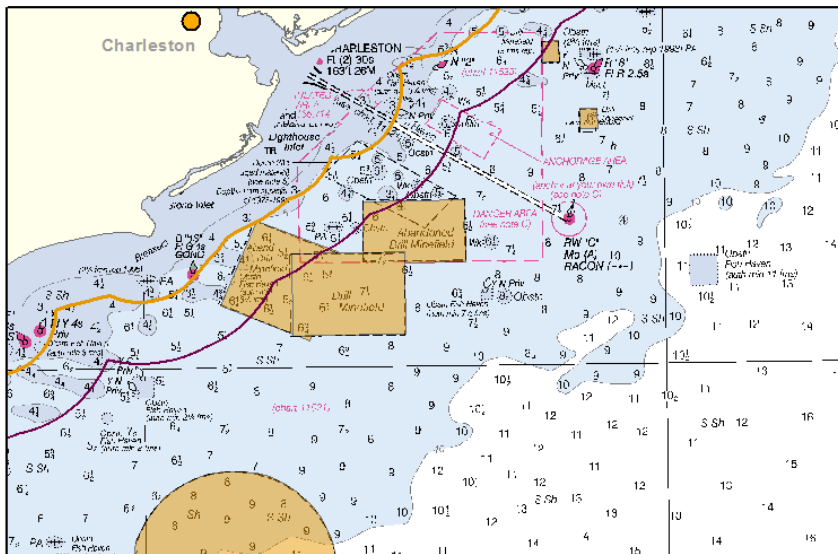
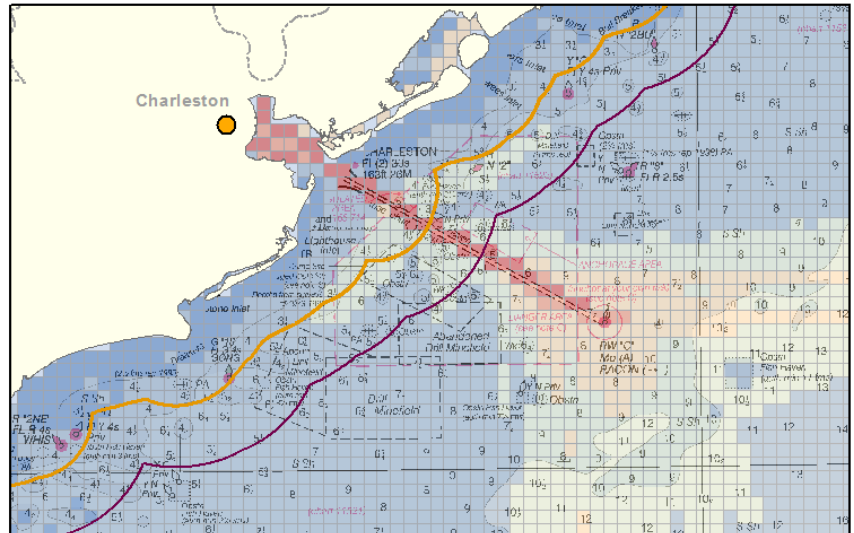
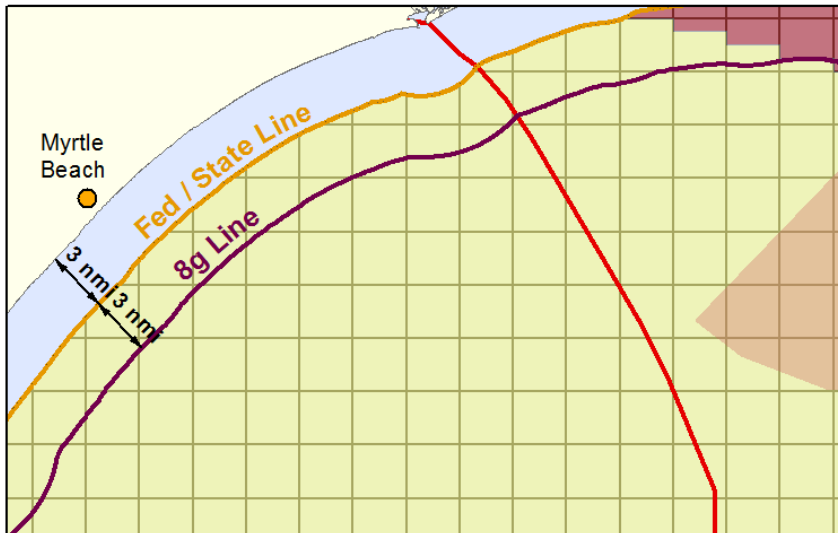


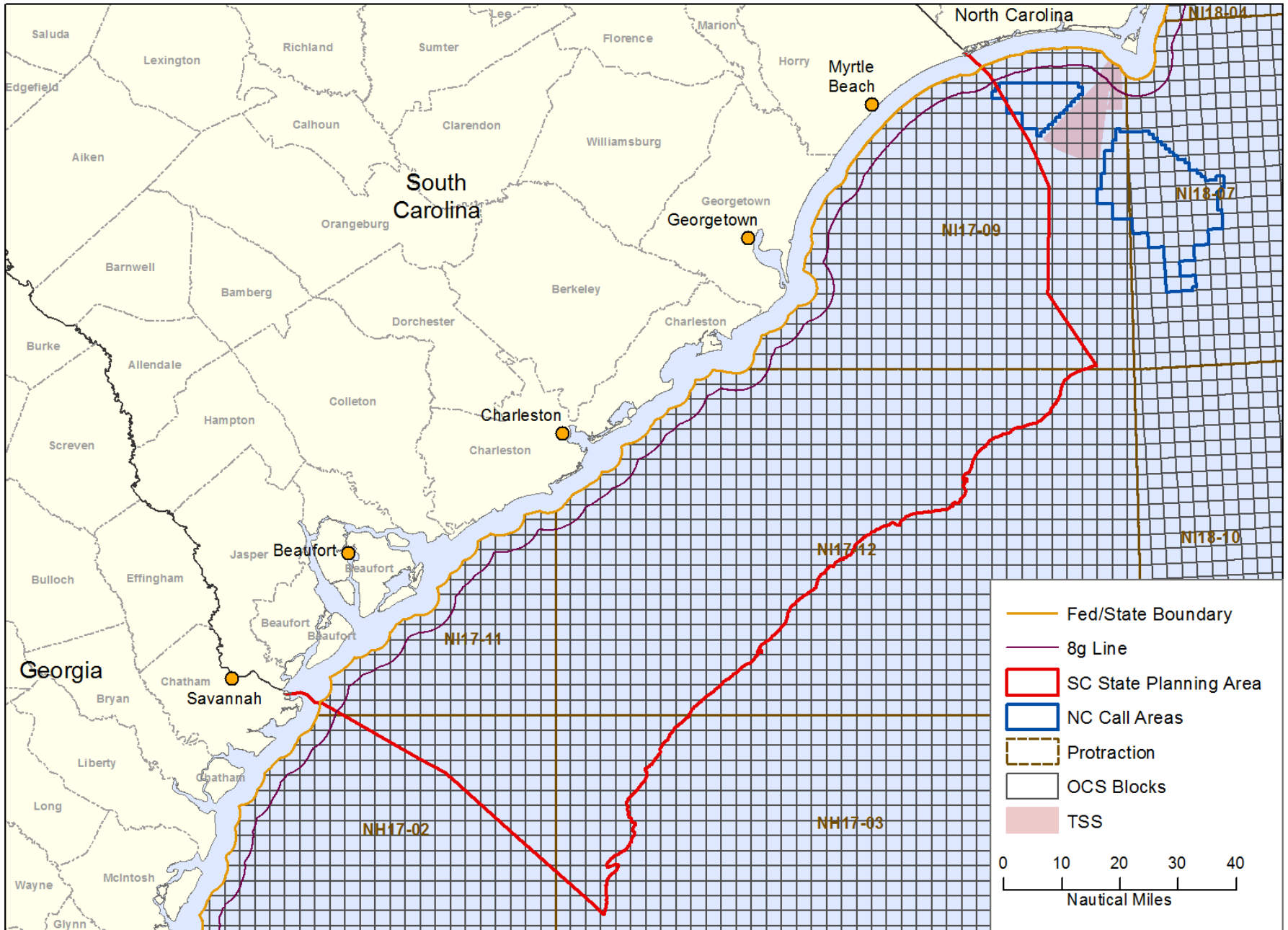


South Carolina Spatial Data for Offshore Renewable Energy Planning

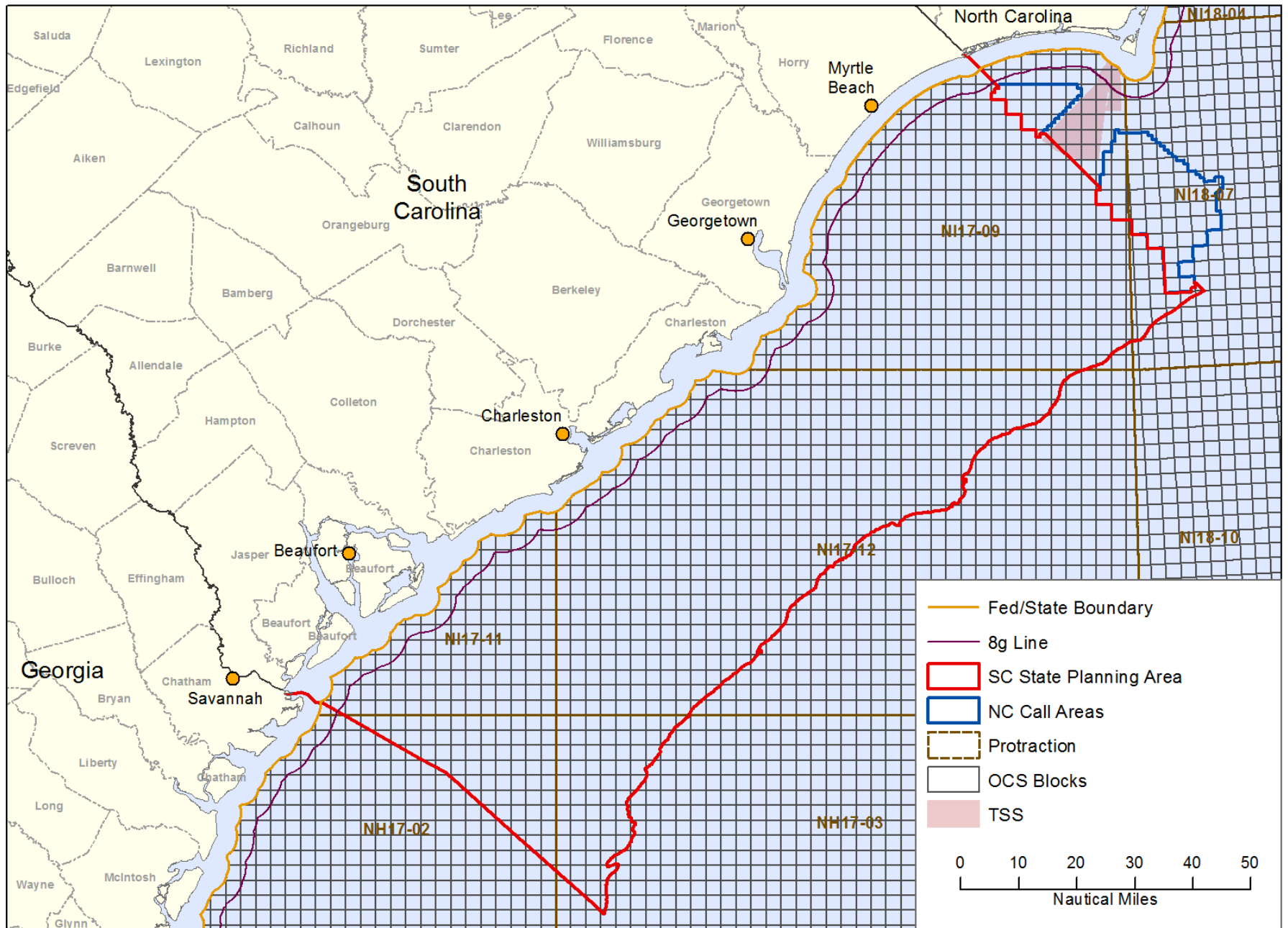


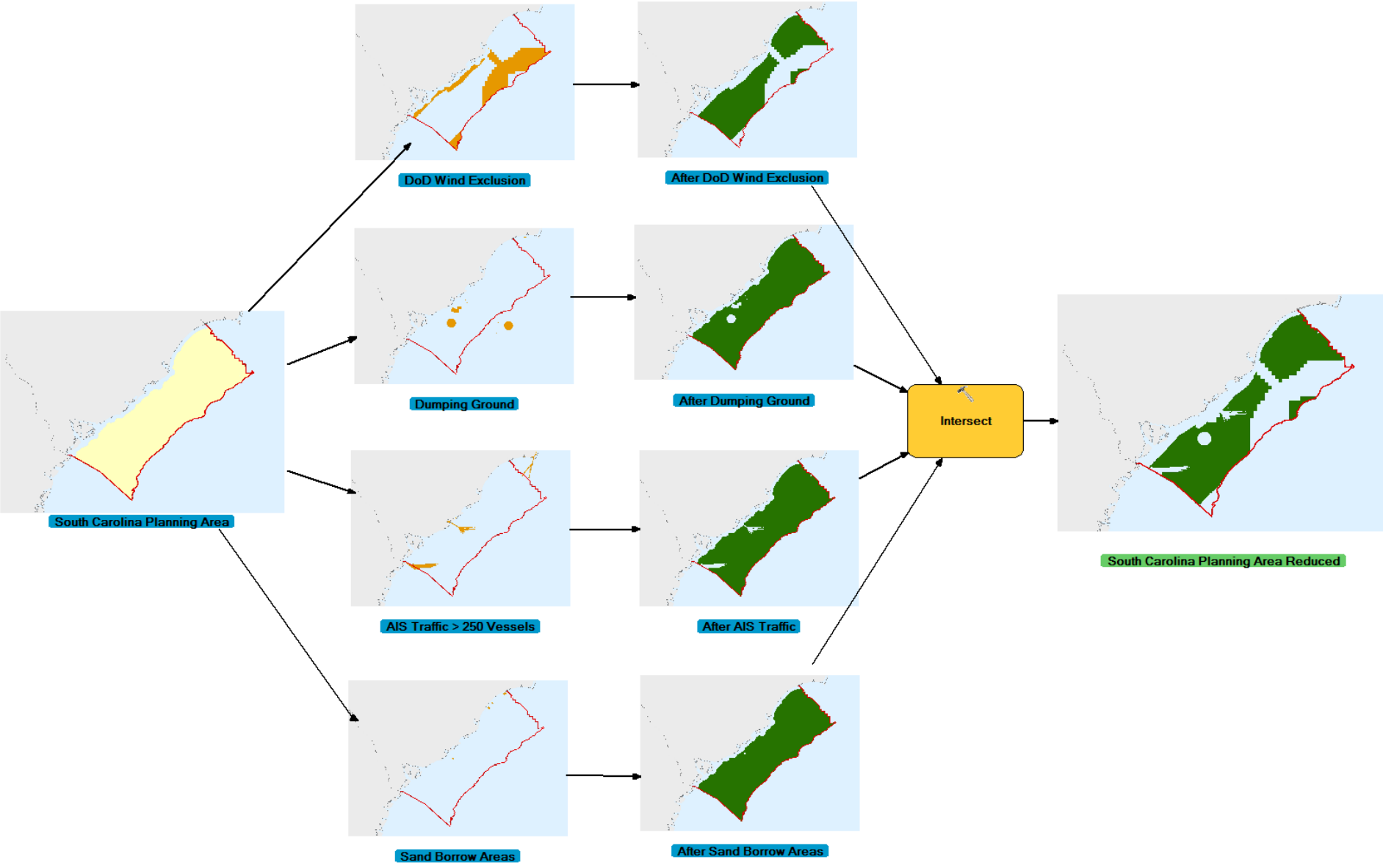
Stephen Creed, Geographer
Bureau of Ocean Energy Management

South Carolina Planning Area

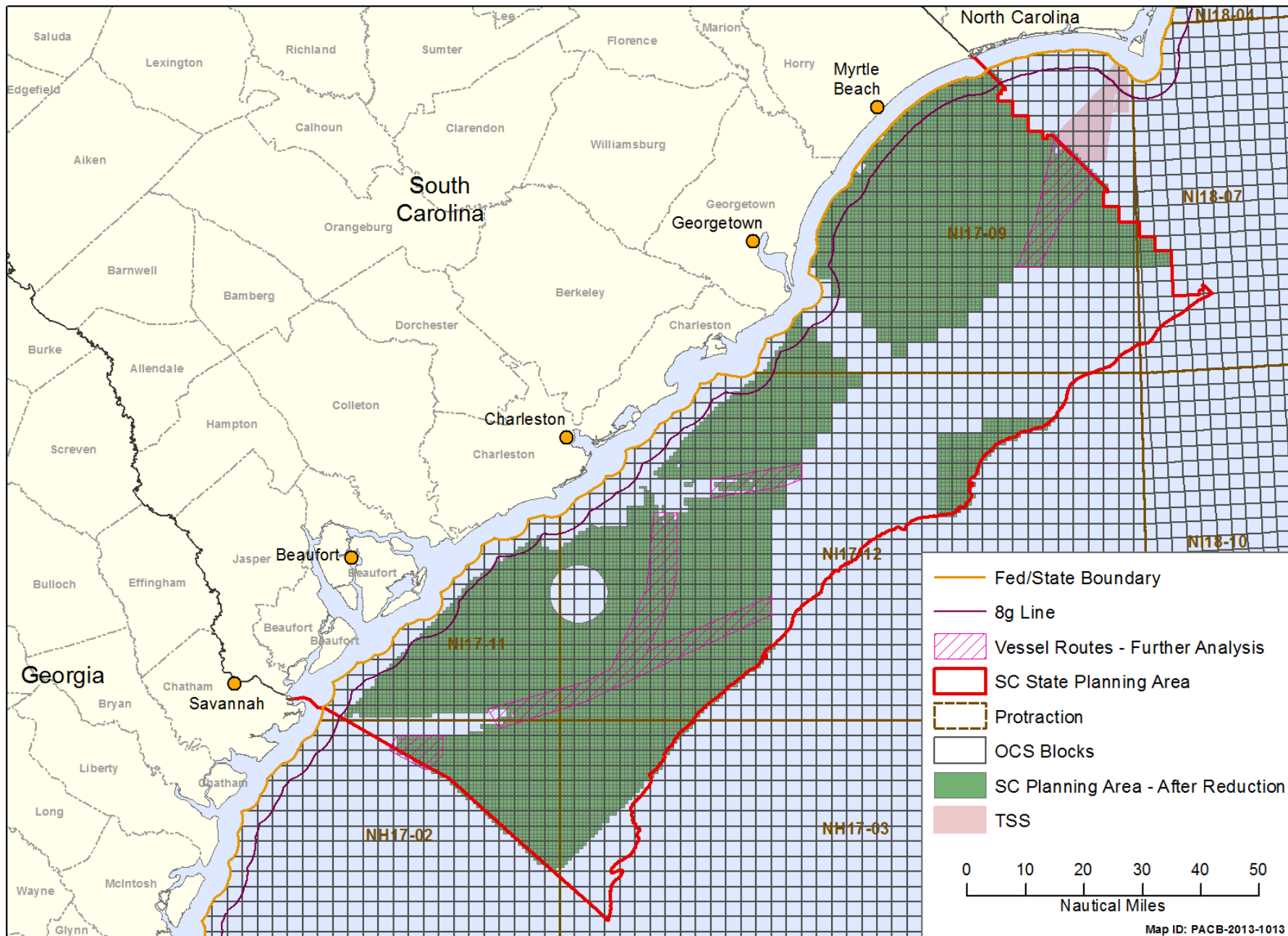


South Carolina Planning Area with Expanded Northern Boundary

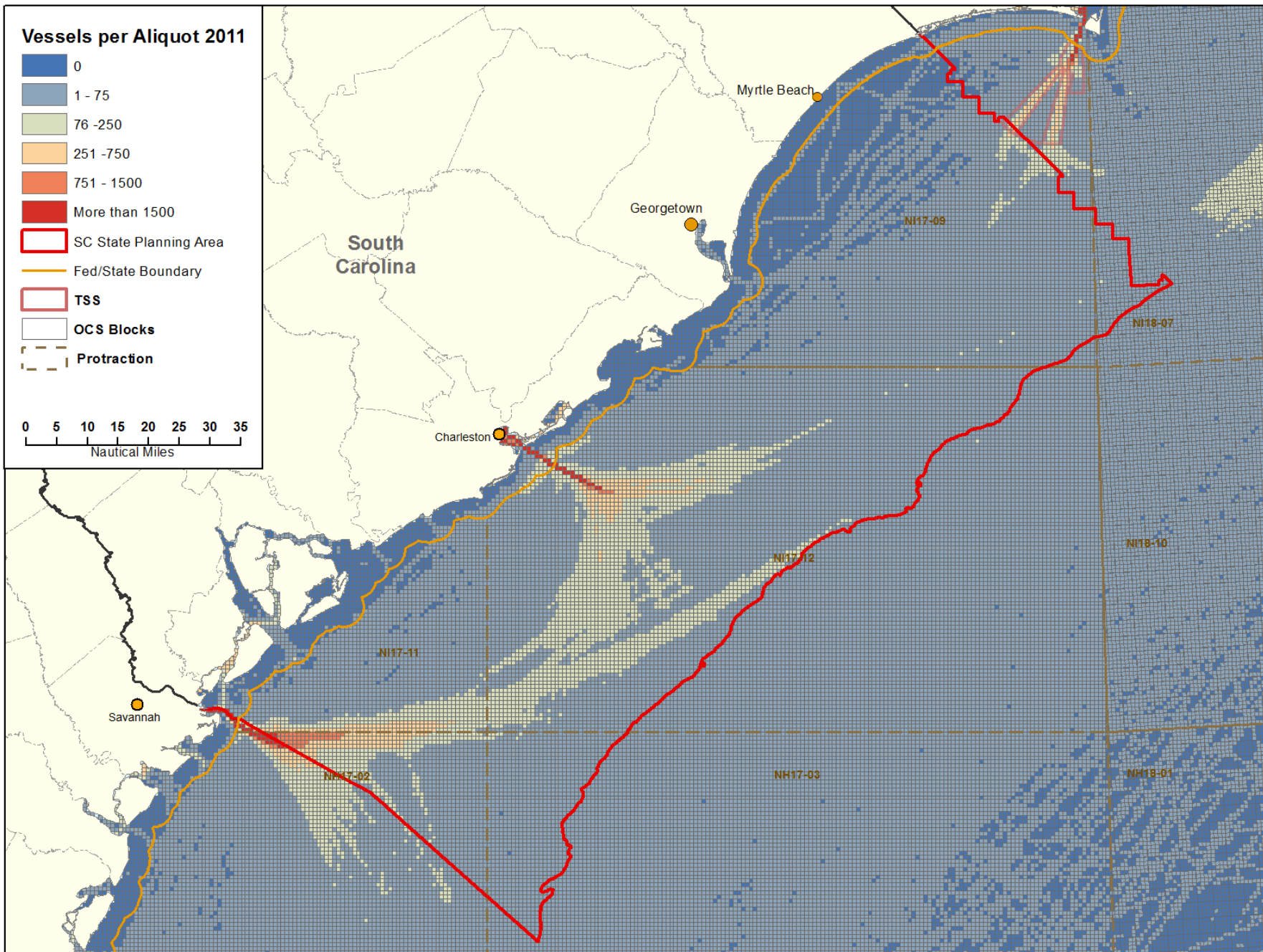
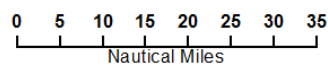
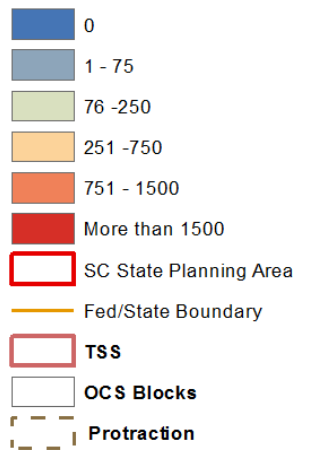




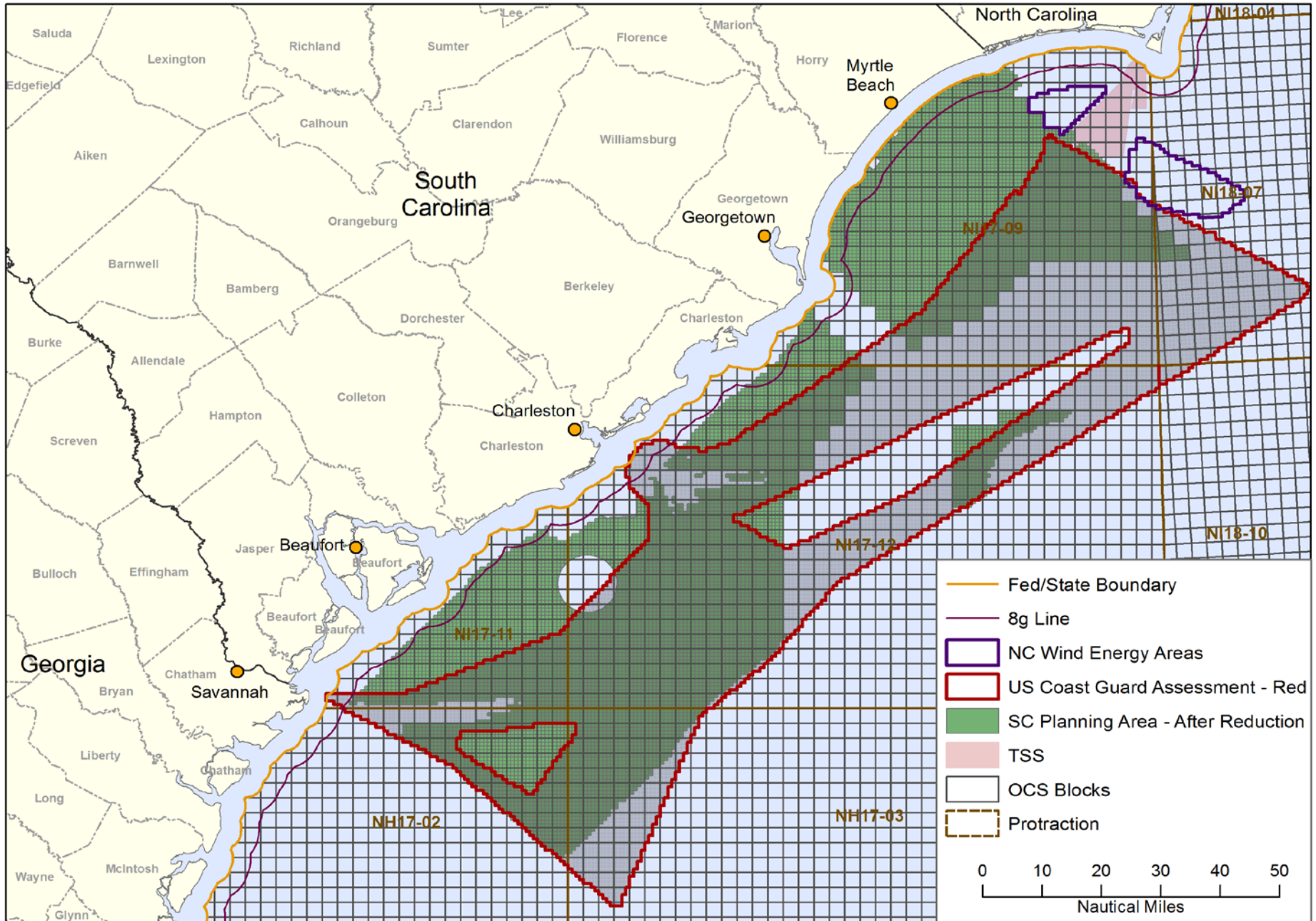
South Carolina Planning Area - After Initial Reduction



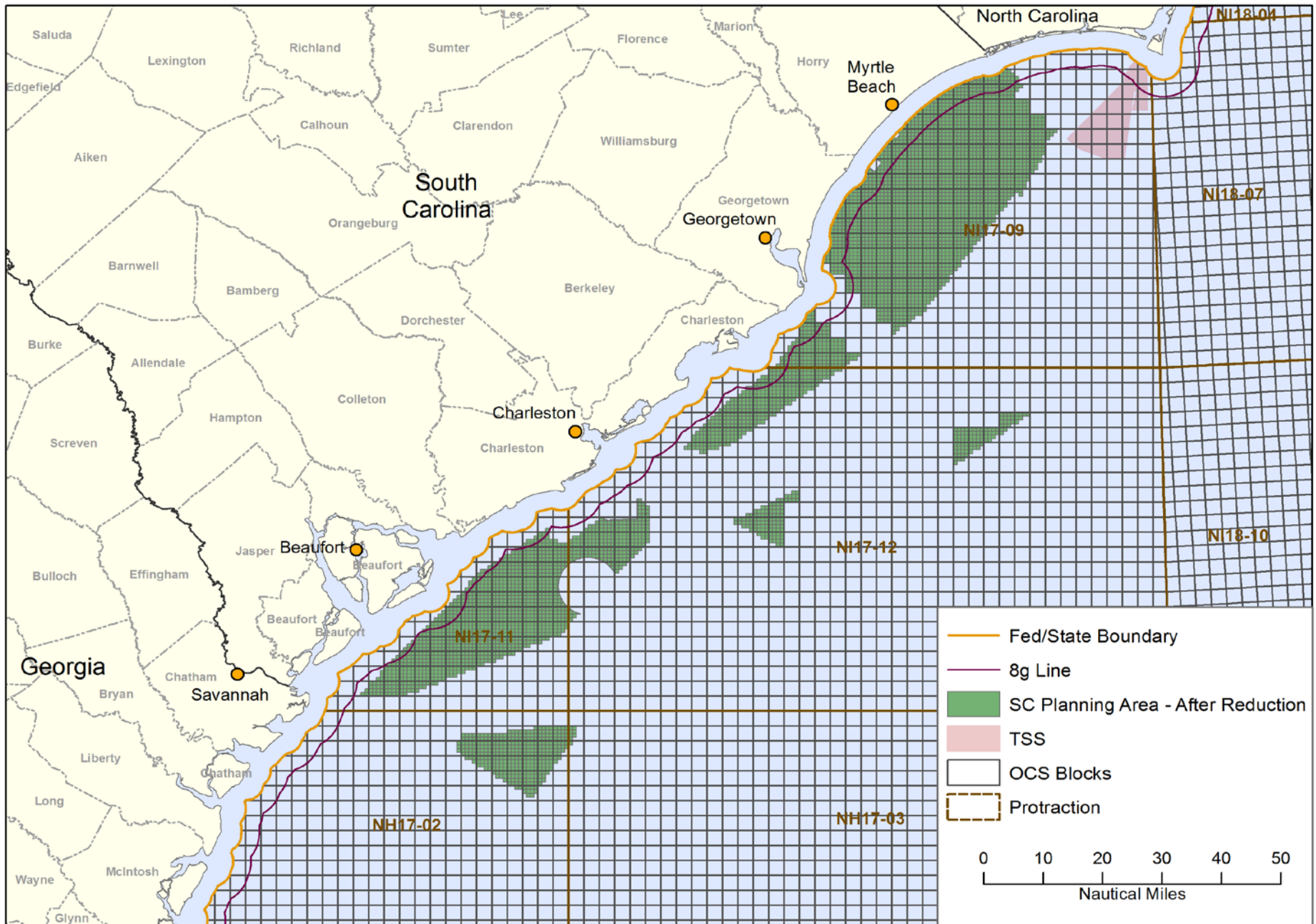
Vessels per Aliquot 2011



South Carolina Planning Area - US Coast Guard Assessment



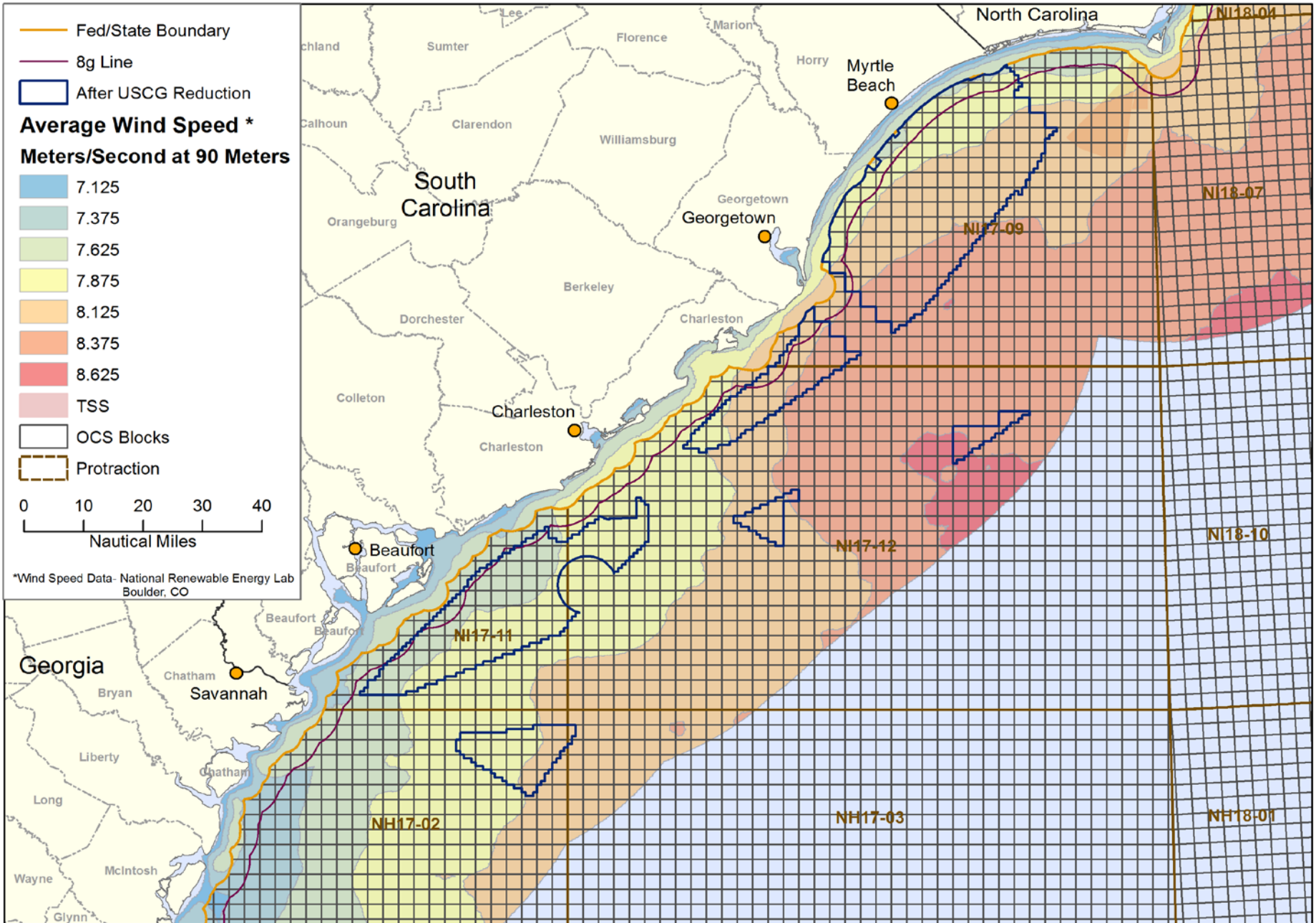
South Carolina Planning Area - After USCG (Red)



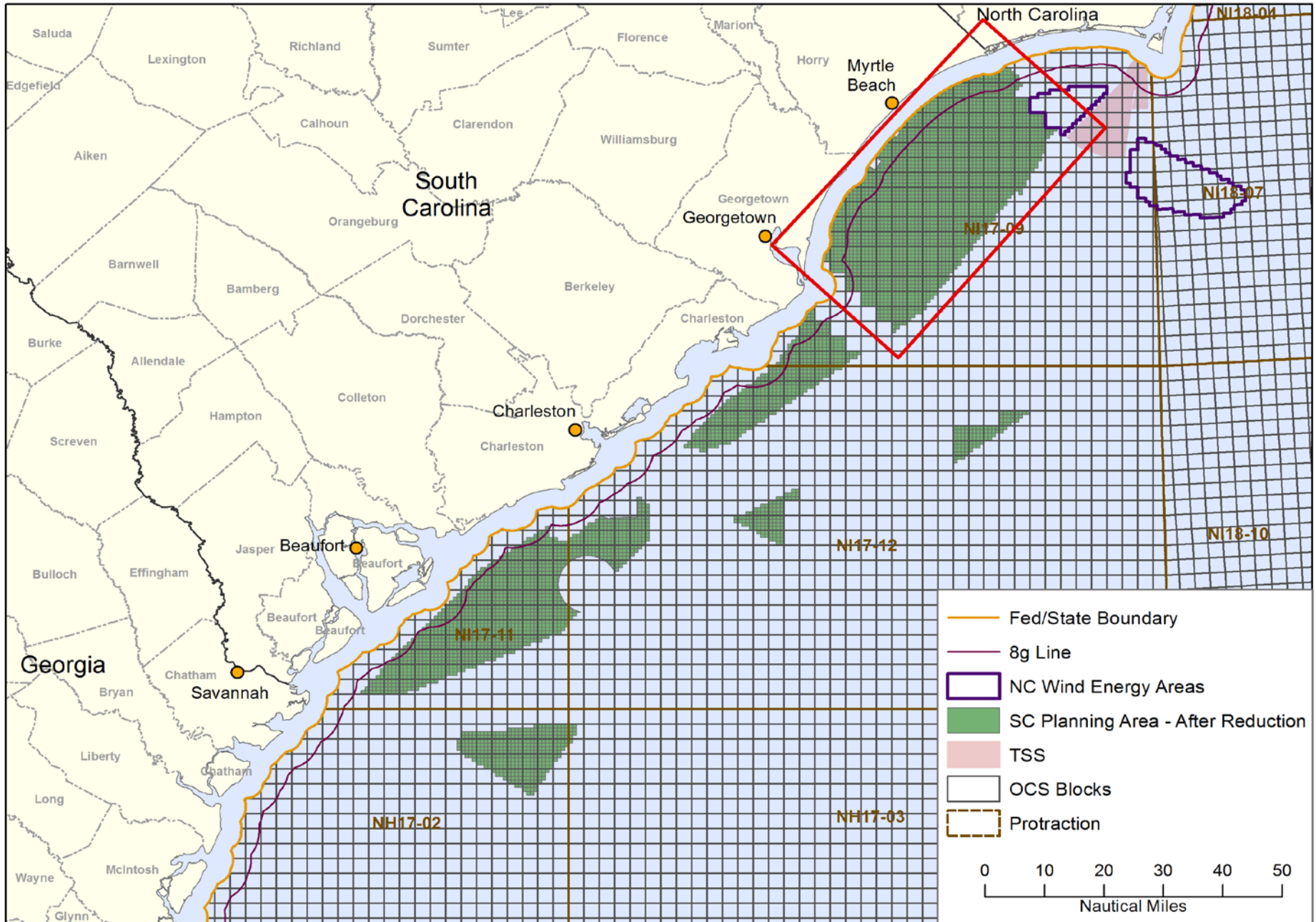
Initial Reduction Review

- DoD Wind Assessment
- Dumping Grounds / Unexploded Ordnance
- Sand and Gravel Borrow Areas
- AIS Vessel Traffic – Identify High Volume Areas
- US Coast Guard Assessment

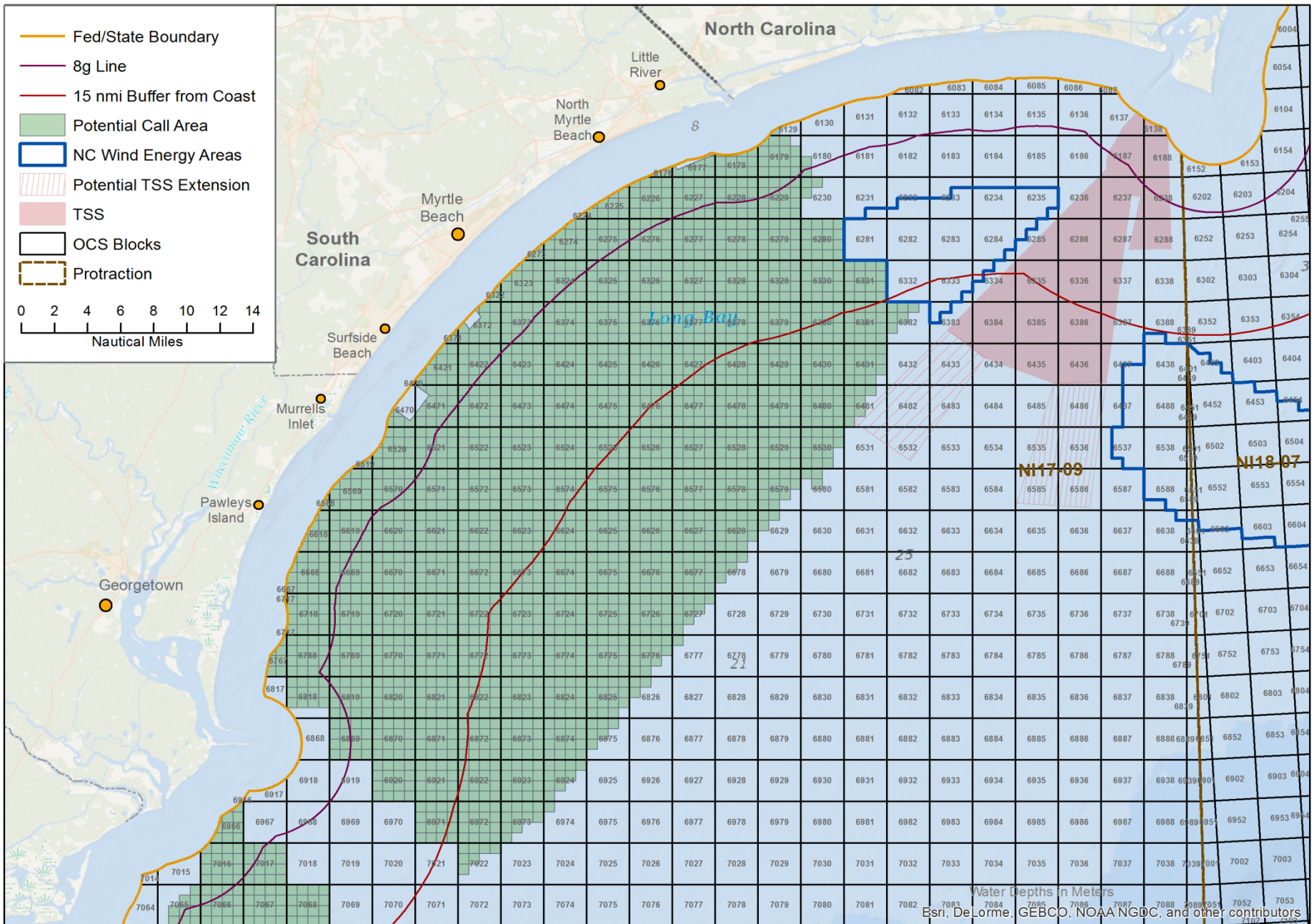
South Carolina Planning Area - Wind Speed



South Carolina - Potential Call Area Identification



South Carolina - Grand Strand



South Carolina - Grand Strand

