



U.S. Department of the Interior
Bureau of Land Management

Science-Informed Decision-Making

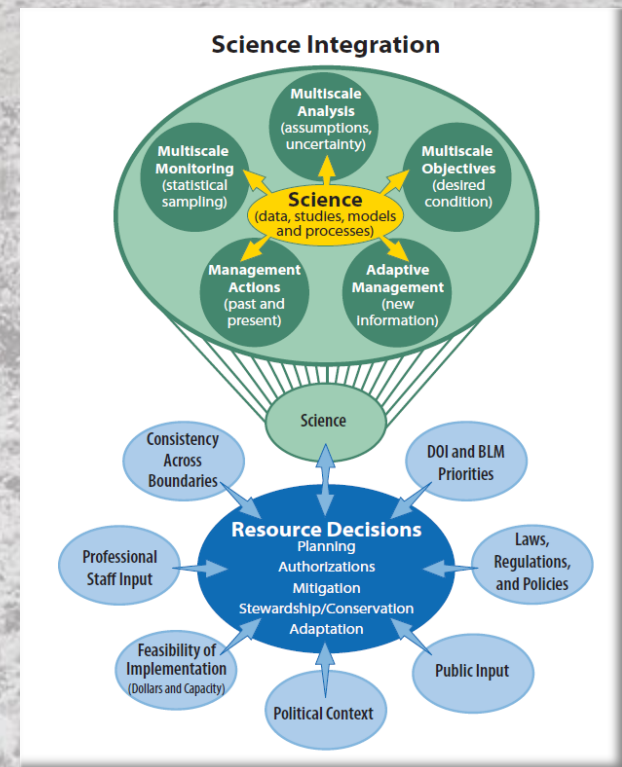
U.S. Department of the Interior, Bureau of Land Management Alaska





Overview

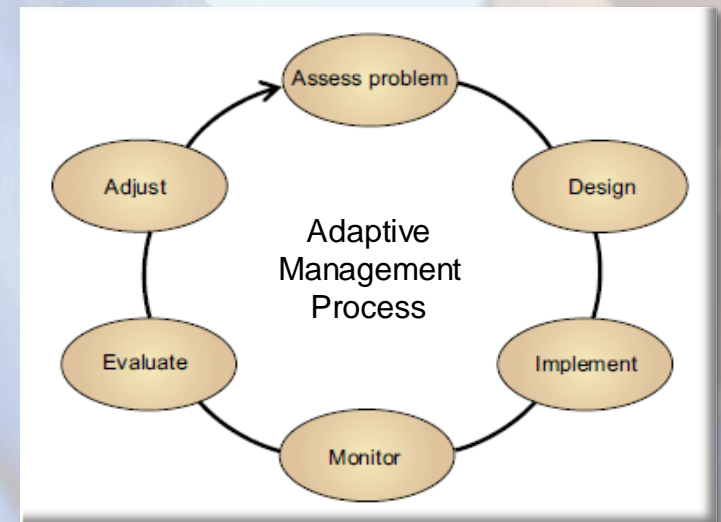
- Key Roles of Science in Relation to BLM Management
- BLM Alaska Science Investments
- BLM Alaska Science Collaborations





Key Roles of Science

1. Baseline research & monitoring
2. Applied environmental-impact research
3. Effectiveness monitoring





BLM Alaska Science Investments

- Baseline Ecological Characterization & Monitoring
 - North Slope Rapid Ecoregional Assessment (REA)
 - Assessment, Inventory, & Monitoring Program (AIM)
- Project-Specific Studies & Monitoring
- Broad-Scale Science Collaborations
 - North Slope Science Initiative (NSSI)
 - Circumpolar Biodiversity Monitoring Program (CBMP)
 - Integration of Indigenous Knowledge and Stakeholder Collaboration into science-informed decision-making



Baseline Ecological Characterization

North Slope Rapid Ecoregional Assessment (REA)

- Transcends management boundaries
- Synthesizes data at the ecoregional level
- Addresses current problems / issues
- Supports efforts to project future conditions
- Supports analysis and decision making by BLM & other federal, state, local agencies
- Informs and benefits public stakeholders



Baseline Ecological Characterization

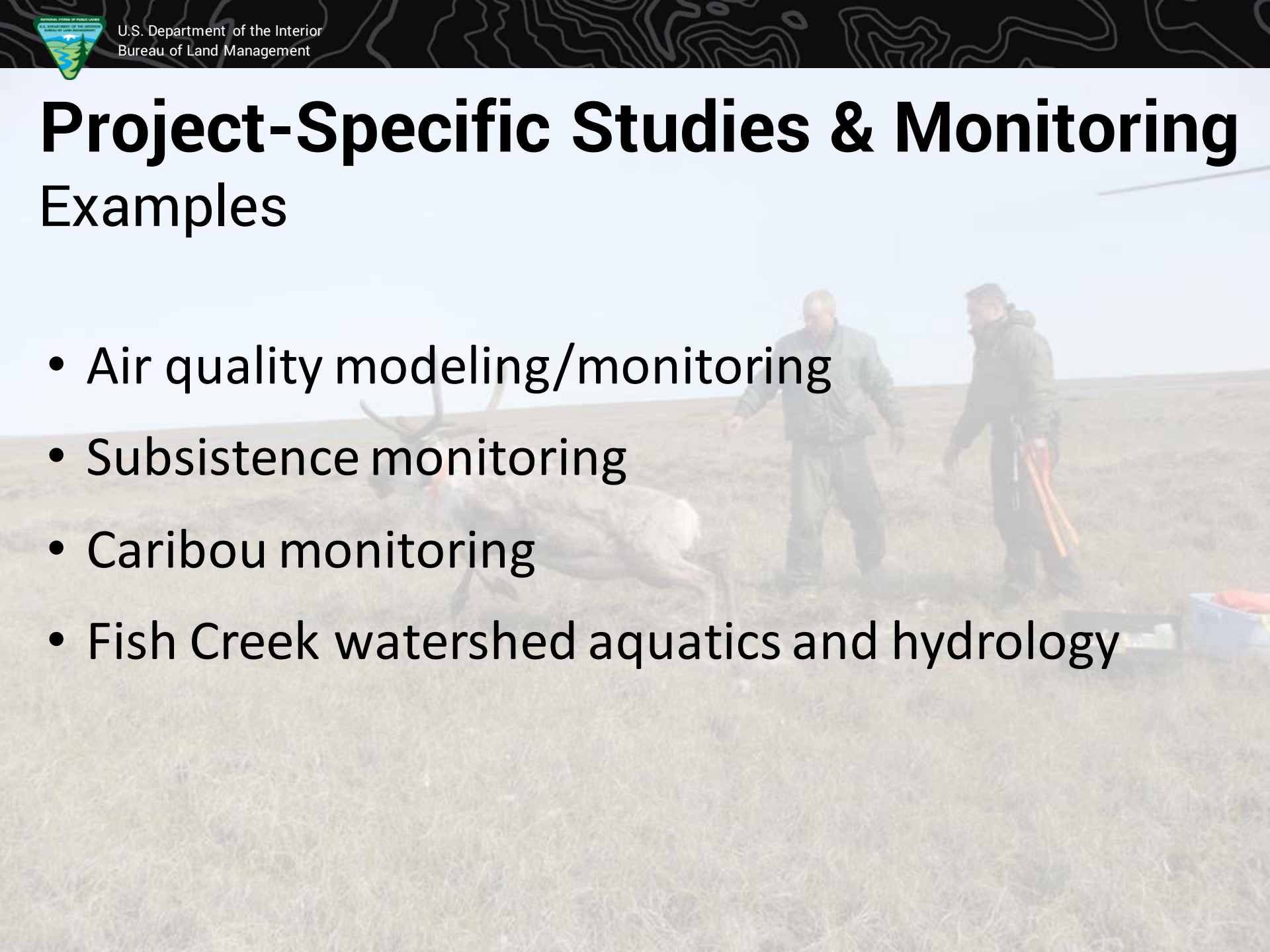
North Slope Assessment, Inventory and Monitoring (AIM)

- Implements & evaluates applicability of bureau-wide protocols in the Arctic
- Establishes framework for characterizing ecosystem conditions and dynamics
- Supports adaptive management by providing a framework for future monitoring of ecosystem dynamics in relation to development activities.



Project-Specific Studies & Monitoring Examples

- Air quality modeling/monitoring
- Subsistence monitoring
- Caribou monitoring
- Fish Creek watershed aquatics and hydrology





Broad-Scale Science Collaborations



Fostering Science Collaboration on Alaska's North Slope

NSSI works with partners to facilitate

*collection,
communication,
synthesis, and
application*



*high-quality scientific
information and
indigenous
knowledge*



*development
planning,
implementation,
and impact
mitigation*



Broad-Scale Science Collaborations

Conservation of Arctic Flora and Fauna (CAFF)

Circumpolar Biodiversity Monitoring Program (CBMP)

- On behalf of BLM, NSSI represents U.S. as co-lead of CBMP with Kingdom of Denmark.
- CBMP seeks to harmonize and enhance Arctic monitoring efforts in order to facilitate more rapid detection, communication, and response to significant trends and pressures.
- Concurrent CBMP workshop in Anchorage to work on coastal and marine monitoring plans.





U.S. Department of the Interior
Bureau of Land Management

Questions & Discussion

