



DEEPWATERWIND

Clean energy is just over the horizon.

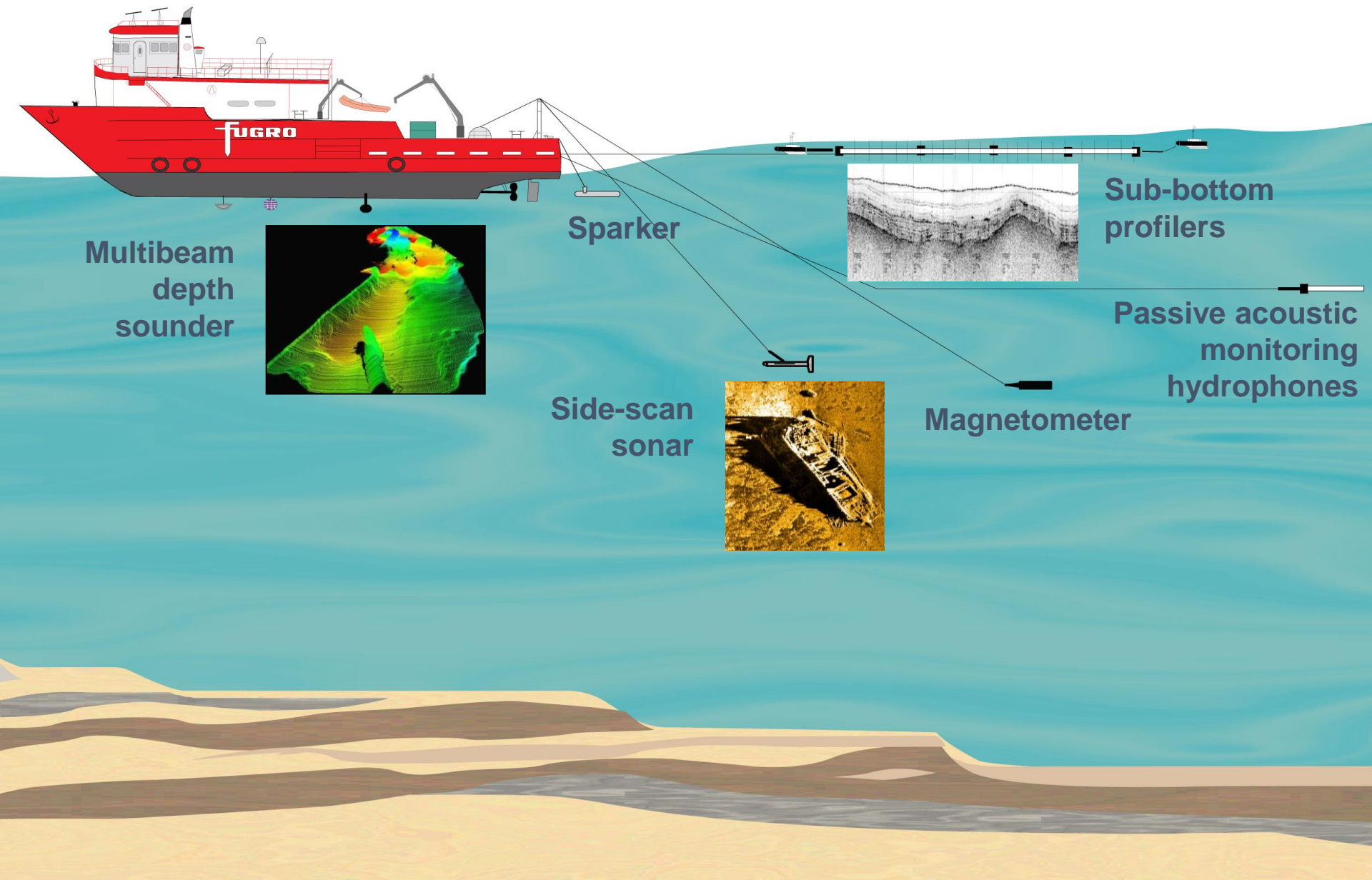
Offshore Wind Activities

- Geophysical Survey
- Geotechnical Survey
- Foundation Installation
- Cable Installation
- Operations and Maintenance



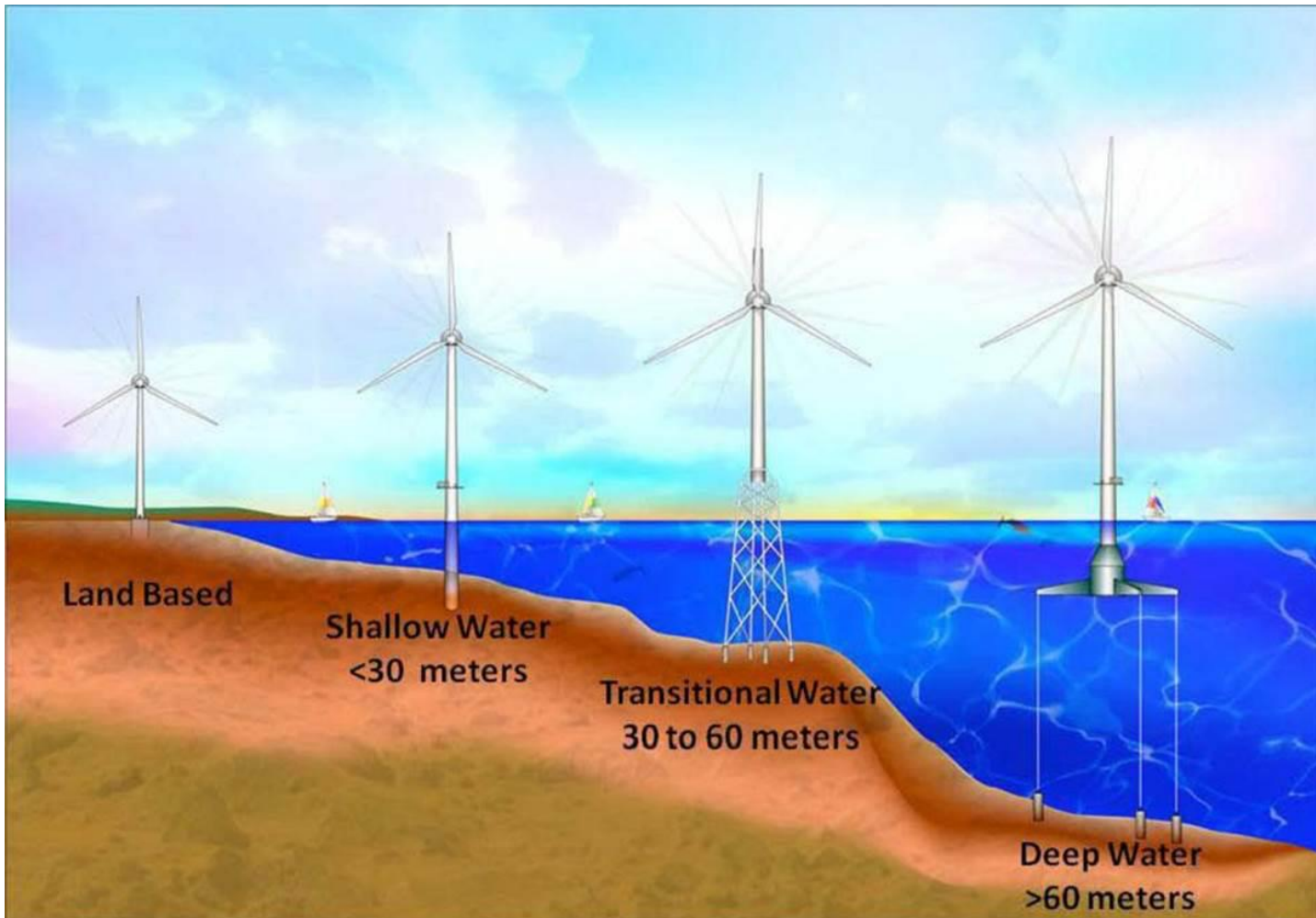
Protected Species Observer (PSO)
Block Island Wind Farm Foundation Installation

Typical Offshore Geophysical Survey Work



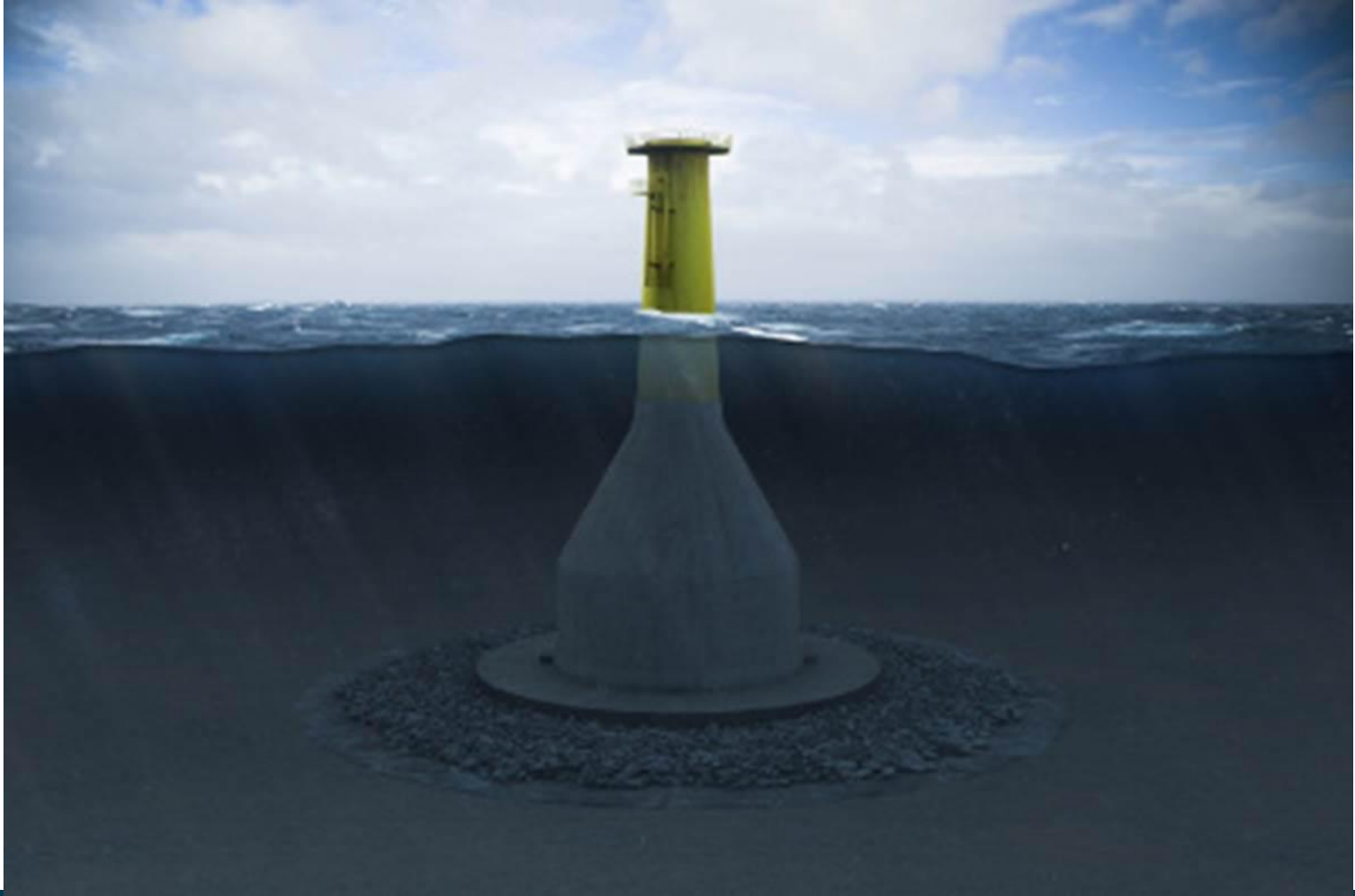
Foundation Types

Vary based on water depth and substrate



Another Option: Gravity Base

Water depths ~15-60 m



Important Items to Discuss

- “Envelope” Permitting
- Potential for Industry LOA re: DP vessel use, HRG surveys
- 24/7 survey and pile driving
- Goal of effective real-time monitoring



DEEPWATERWIND

Clean energy is just over the horizon.

Aileen Kenney
VP Permitting and Environmental Affairs
akenney@dwwind.com

Videos at: vimeo.com/deepwaterwind



dwwind.com



[/DeepwaterWind](https://www.facebook.com/DeepwaterWind)



[@DeepwaterWind](https://twitter.com/DeepwaterWind)