



**UNCLASSIFIED**

---

# **DoD Mission Compatibility Assessment: New York Offshore Wind Energy**

## **Briefing to New York Bight Task Force**

### **28 November 2018**

**Frederick C. Engle**

**Director, Military Training and Ranges**

**Office of the Assistant Secretary of Defense (Readiness)**



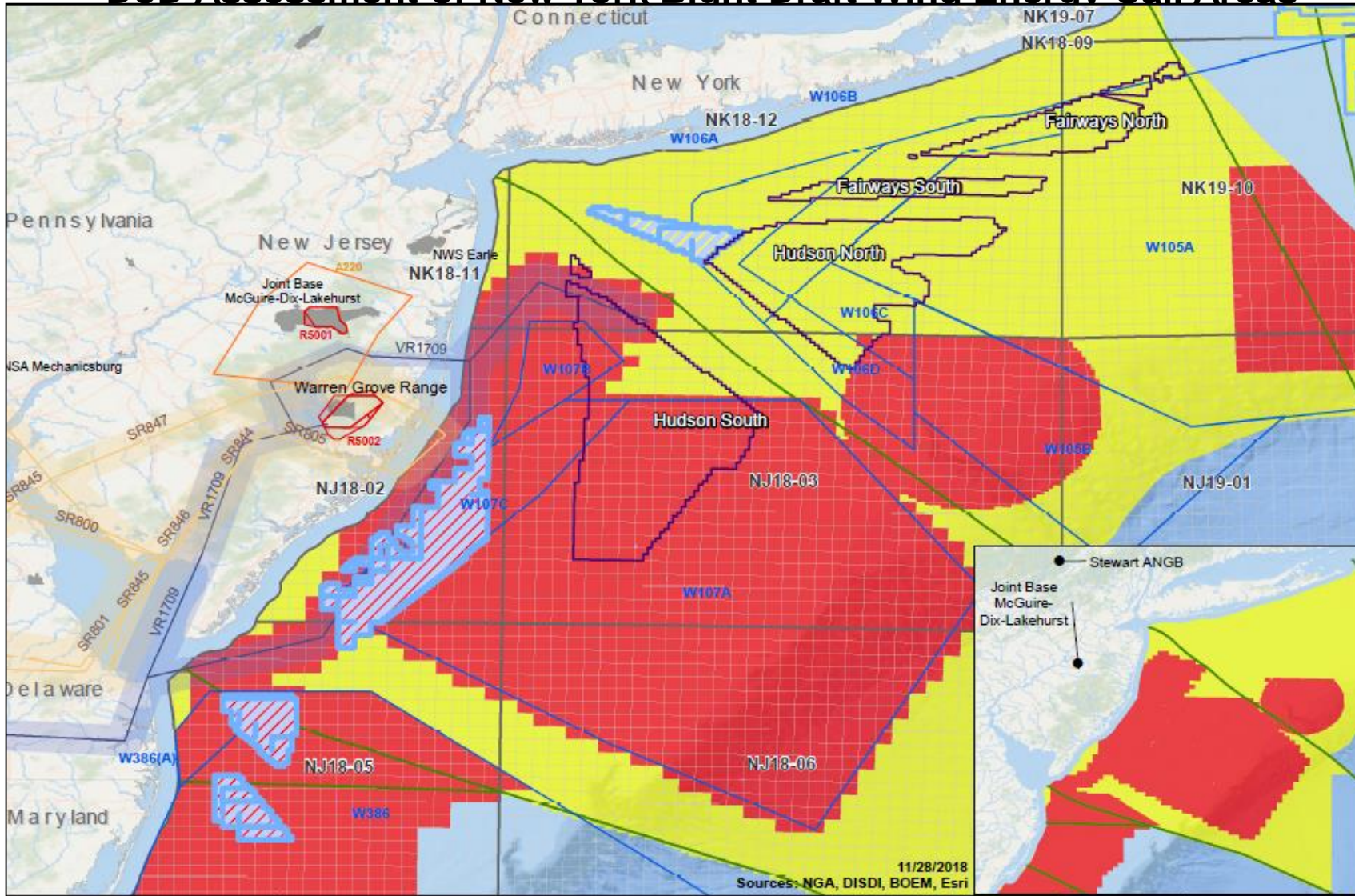
**UNCLASSIFIED**

## **Methodology**

---

- **Military services tasked to assess federal waters in New York for potential impacts to military training, testing, and operations.**
- **Categorize DoD offshore mission compatibility using:**
  - 1. Unrestricted**
  - 2. Site Specific Stipulations**
  - 3. Wind Exclusion Area**
- **Assess at the lease block level, down to aliquot level where needed.**

# DoD Assessment of New York Bight Draft Wind Energy Call Areas

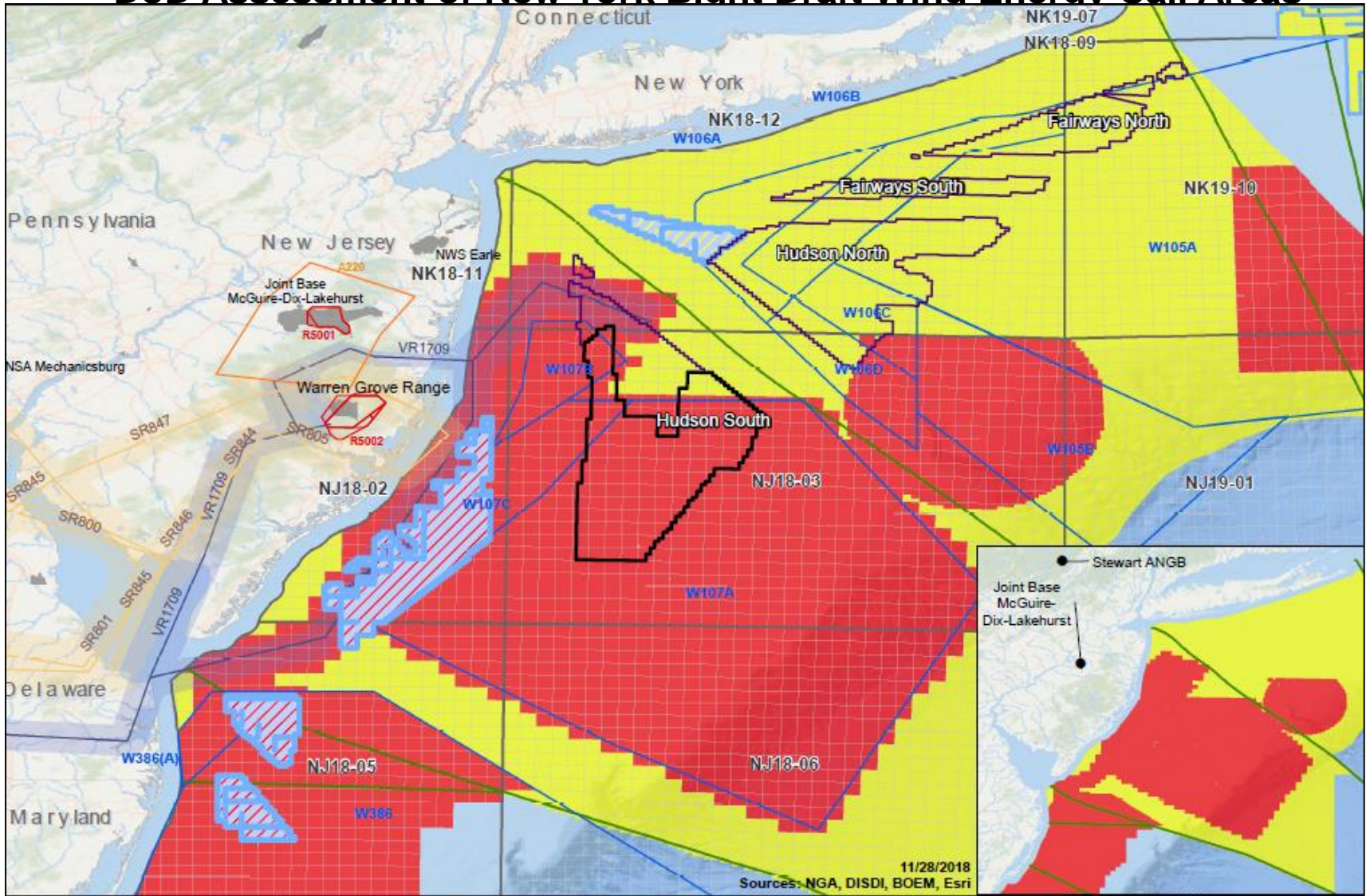


11/28/2018

Sources: NGA, DISDI, BOEM, Esri

<b>New Jersey Offshore Wind Energy Mission Compatibility Assessment (2017)</b>	DoD Installations/Ranges	Administrative Boundary	<b>2017 Offshore Wind Assessment</b> Wind Exclusion Site-Specific Stipulations	 0 10 20 Miles 0 20 40 Kilometers
	BOEM Protraction BOEM Lease Blocks Alert Area Restricted Areas Warning Areas	New York Call Areas Existing New York/New Jersey Commercial Wind Leases Previously Assessed as Site-Specific Stipulations Slow Routes Visual Routes		

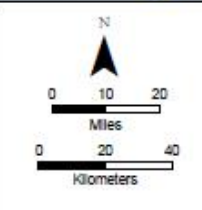
# DoD Assessment of New York Bight Draft Wind Energy Call Areas



**New Jersey Offshore Wind Energy Mission Compatibility Assessment (2017)**

- DoD Installations/Ranges
- BOEM Protraction
- BOEM Lease Blocks
- Alert Area
- Restricted Areas
- Warning Areas
- Administrative Boundary
- New York Call Areas
- Existing New York/New Jersey Commercial Wind Leases
- Previously Assessed as Site-Specific Stipulations
- Proposed BOEM Wind Energy Area
- Slow Routes
- Visual Routes

- 2017 Offshore Wind Assessment**
- Wind Exclusion
  - Site-Specific Stipulations



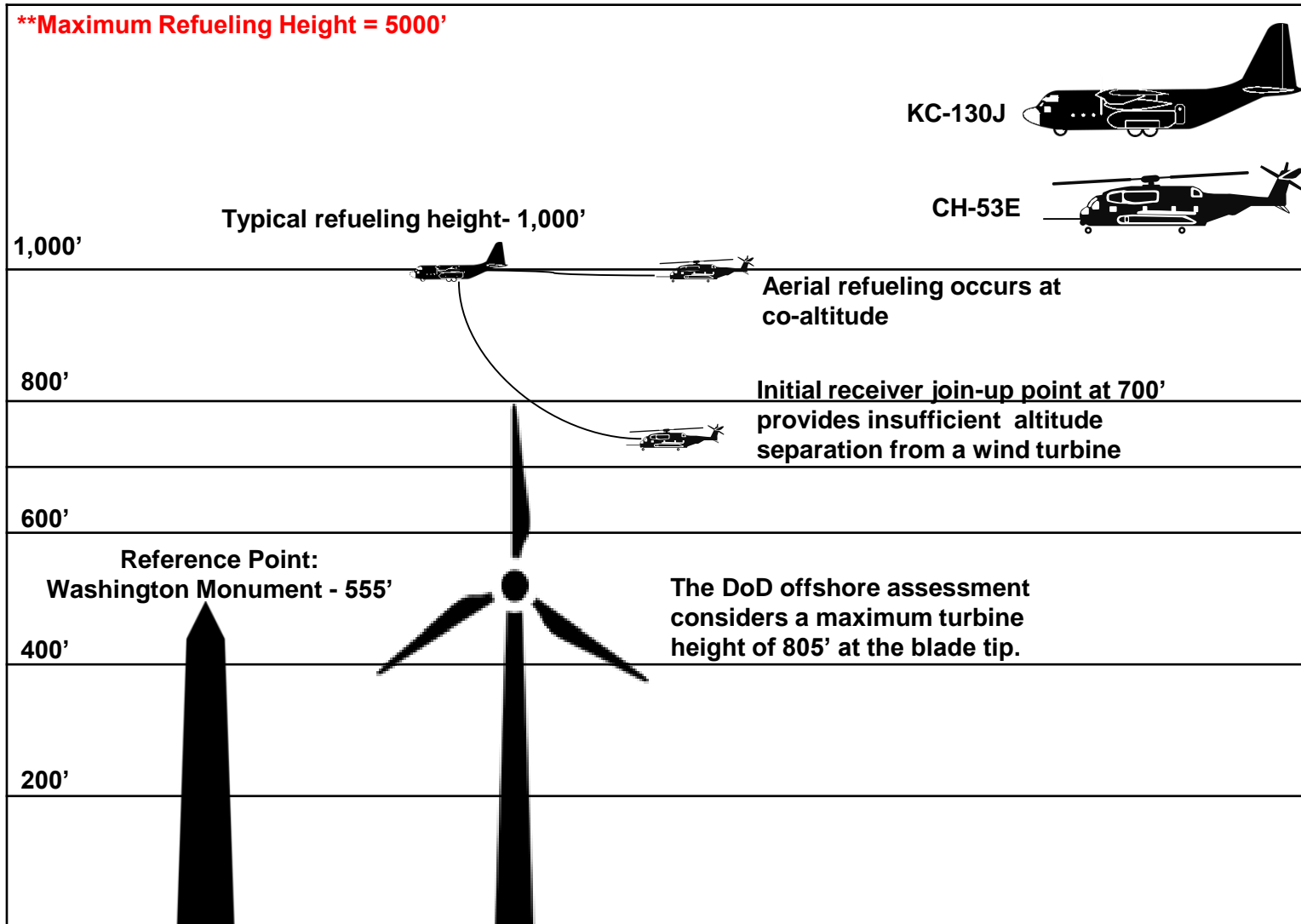


# Backup

---



# USMC Operations





# USMC Operations

