

The background image shows two lighthouses on a grassy hillside overlooking the ocean. The lighthouse on the left is tall and slender, with alternating black and white horizontal bands. The lighthouse on the right is shorter and wider, constructed of brick with a green lantern room. The sky is overcast and the ocean is visible in the distance.

# Coastal Virginia Offshore Wind Project:

Research Activities Plan (RAP)  
Modification Review

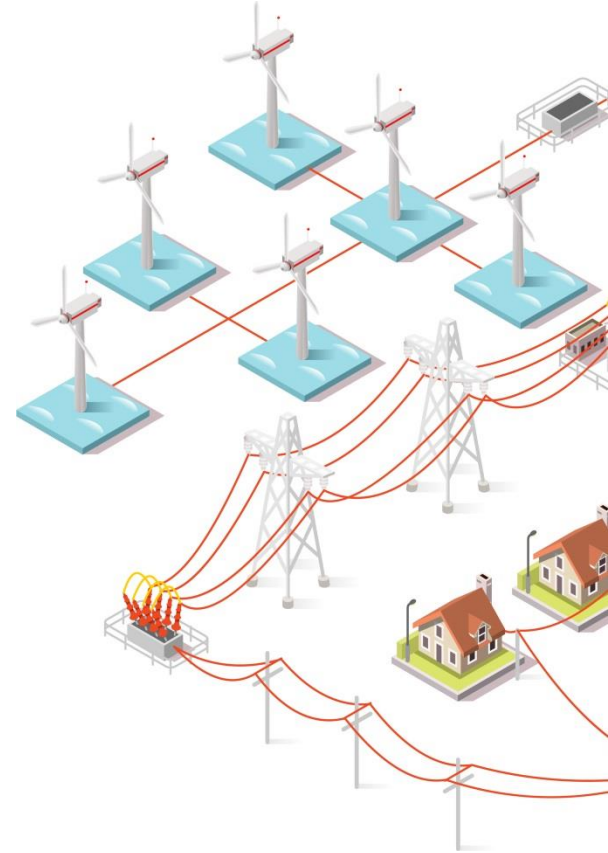
**Algene Byrum**, *Environmental Protection Specialist*

# Past NEPA Analysis and Consultations for the RAP

- **March 2014: Notice of Intent** to prepare an Environmental Assessment (EA)
- **April 2014:** Public scoping comment and meeting, initiated environmental consultations
- **December 2014: Published EA** for public view, held public meeting
- **July 2015:** Completed environmental consultations, **published revised EA**, issued Finding of No Significant Impact

# What Activities Require Revision to the RAP?

- Activities **not described** in approved RAP
- Modifications to the **size or type** of facility or equipment used
- Change in the **surface location** of a facility or structure
- Change in location of **bottom disturbances** (anchors, chains, etc.)
- Change in location of **onshore support base**



# Evaluating Proposed Revisions to the RAP



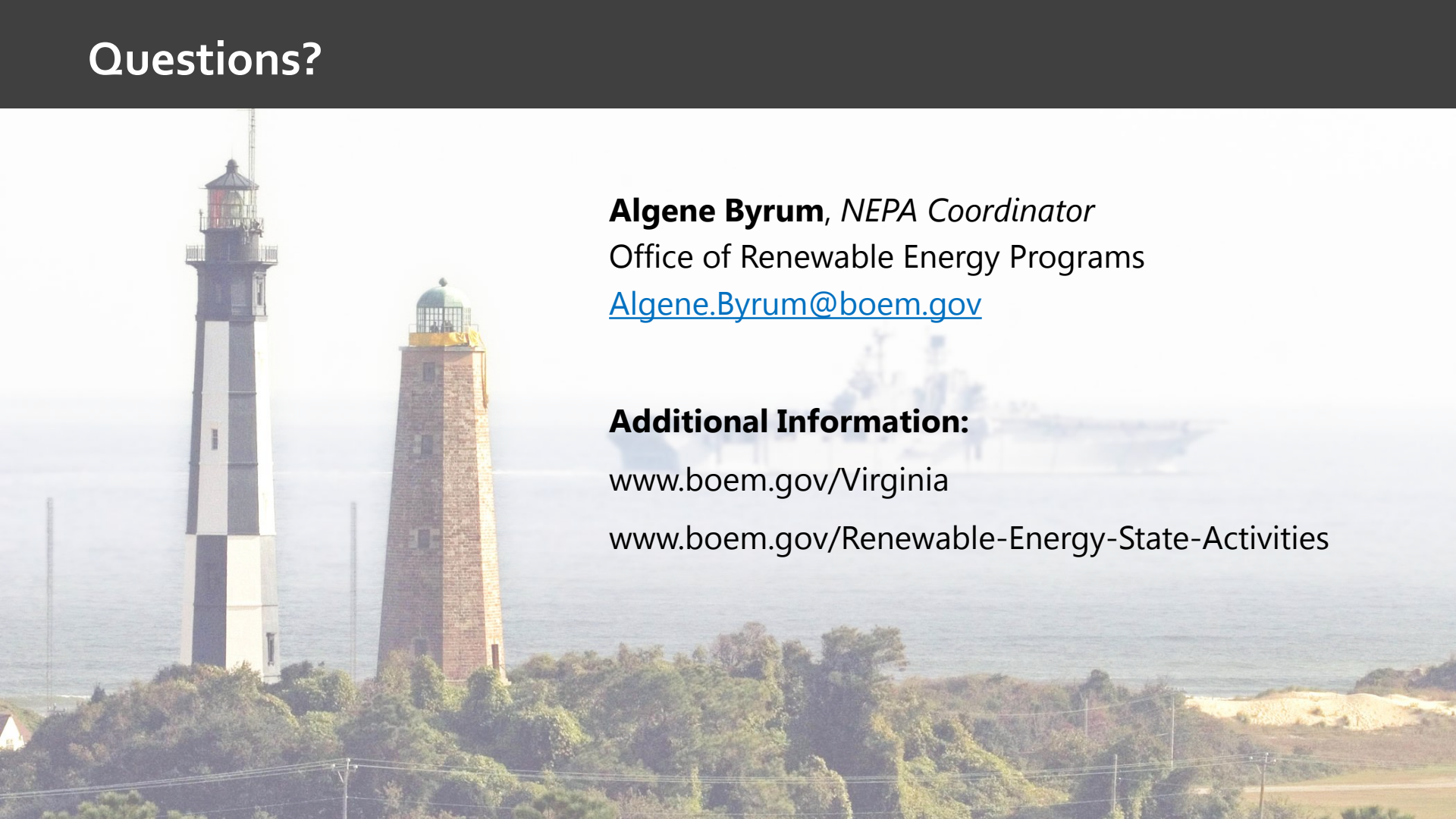
- Determine whether proposed activities are **authorized under existing** approved RAP
- Request **additional information** prior to conducting NEPA analysis and consultations
- Determine **level** of NEPA analysis and consultations necessary

# Evaluating Proposed Revisions to the RAP

- BOEM may **begin NEPA analysis and consultations** when it's determined proposed revisions could:
  - Involve activities not previously identified and evaluated
  - Result in a significant change in impacts previously identified and evaluated in the revised EA published in *July 2015*
  - Require additional Federal authorizations



# Questions?

A photograph of two lighthouses on a coastal hillside. The lighthouse on the left is tall and slender, with a black and white striped tower and a black lantern room. The lighthouse on the right is shorter and wider, constructed of brick with a green lantern room. The background shows a hazy sea and sky.

**Algene Byrum**, *NEPA Coordinator*  
Office of Renewable Energy Programs  
[Algene.Byrum@boem.gov](mailto:Algene.Byrum@boem.gov)

**Additional Information:**

[www.boem.gov/Virginia](http://www.boem.gov/Virginia)

[www.boem.gov/Renewable-Energy-State-Activities](http://www.boem.gov/Renewable-Energy-State-Activities)