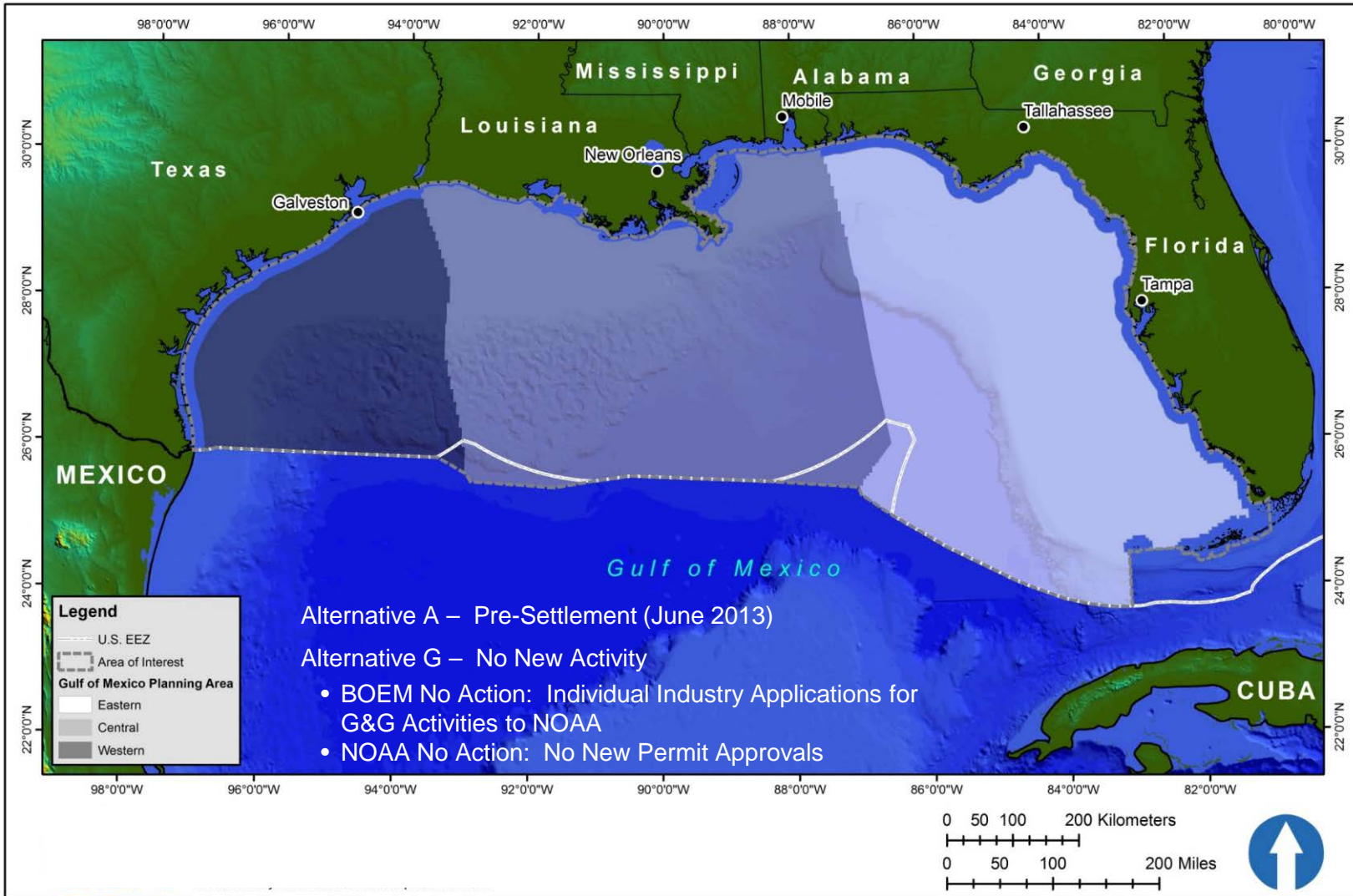
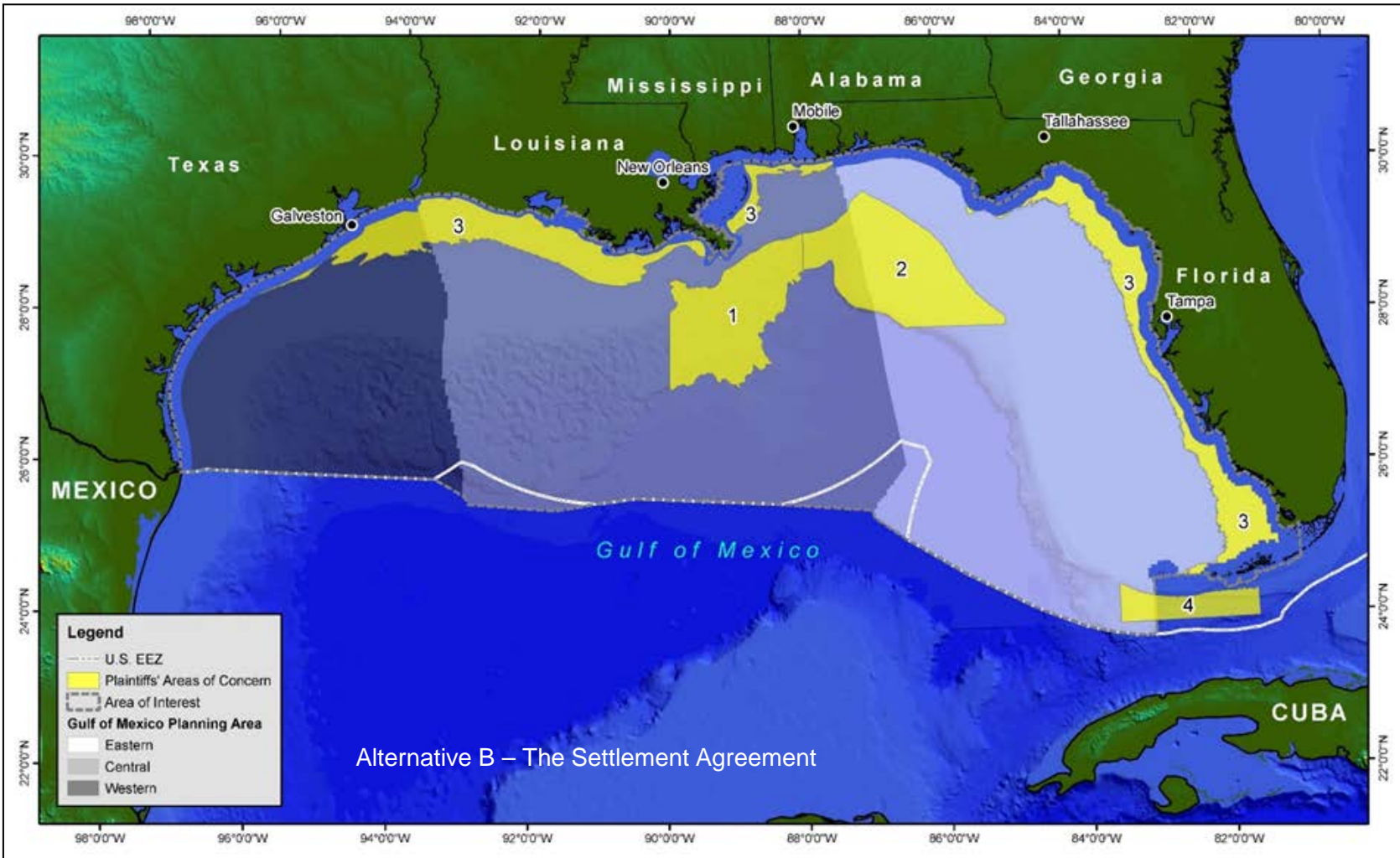


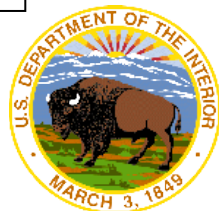
Alternatives A and G



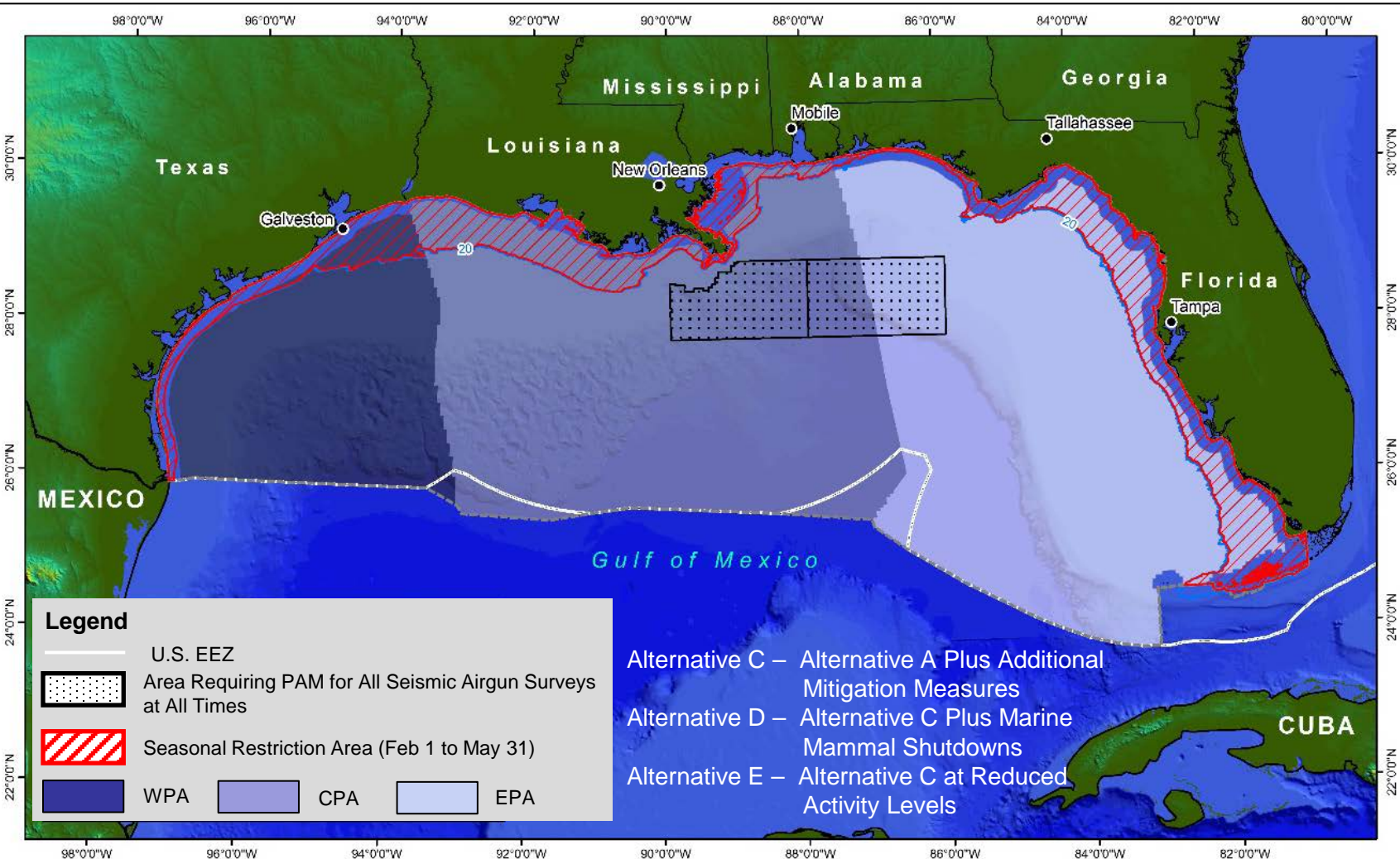
Alternative B



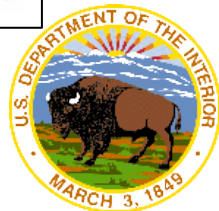
The G&G activities include implementation of mitigation, monitoring, and reporting as well as mitigation measure requirements outlined in the Settlement Agreement. These mitigations include four areas of concern that provide either seasonal restrictions for coastal waters between March 1 and April 30 (Area of Concern 3), closures for all deep-penetration seismic airgun surveys within the Areas of Concern (portions of 2, 3, and 4) located in the Eastern Planning Area, or a minimum separation distance between simultaneous deep-penetration seismic airgun surveys when operating in the Areas of Concern.



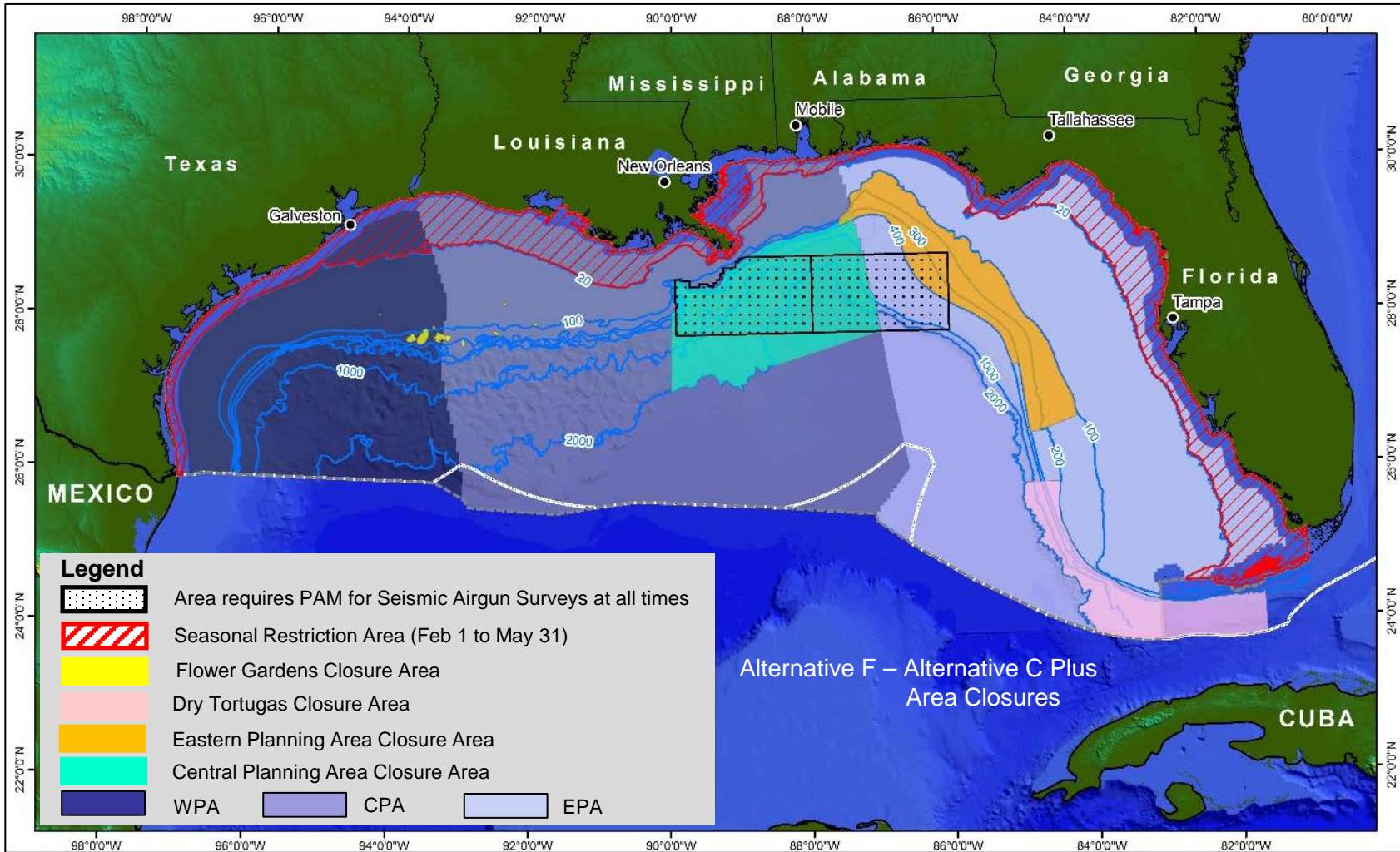
Alternatives C-E



Additional mitigation measures in Alternatives C-E would further minimize the potential for injury to marine mammals and sea turtles to avoid most Level A harassment of marine mammals and would provide additional protection for specific target species of mammals. The required use of PAM for all airgun survey all times in the Mississippi Canyon and De Soto Canyon lease blocks and the closure for all new seismic airgun and non-airgun HRG surveys in the CPA and EPA, the Dry Tortugas, and the Flower Garden Banks Closure Areas are proposed in Alternatives C-E.



Alternative F



The G&G activities would continue to be authorized and include the mitigation measures, monitoring, reporting, survey protocols, and guidance that are included in Alternative C, as well as the addition of area closures for all seismic airgun surveys at all times in four deepwater areas. These area closures include the Central Planning Area Closure Area, the Eastern Planning Area Closure Area, the Dry Tortugas Closure Area, and the Flower Gardens Closure Area. All of the closure areas or a subset of the closures areas could be selected as part of this alternative.

