

GoMMAPPS



Gulf of Mexico Marine Assessment Program for Protected Species

Rebecca Green, PhD
Senior Oceanographer
Environmental Studies Program
Gulf of Mexico OCS Region

BOEM MISSION

Manage development of U.S. Outer Continental Shelf energy and mineral resources in an environmentally and economically responsible way.



PROGRAM AREAS



Oil & Gas

5-year leasing program
Regional lease sales



Renewable Energy

Site identification through
stakeholder input and
State task forces



Marine Minerals

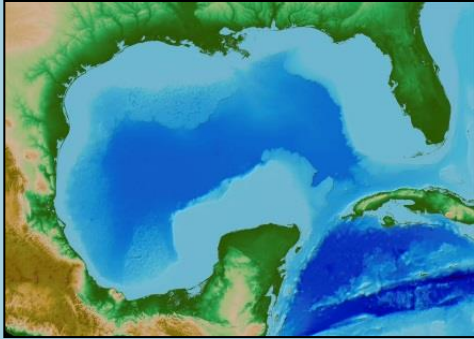
Through negotiated
agreement with State
and local entities

ENVIRONMENTAL MISSION

Use the best available science to protect the environment while ensuring the safe development of the Nation's offshore energy and marine mineral resources.



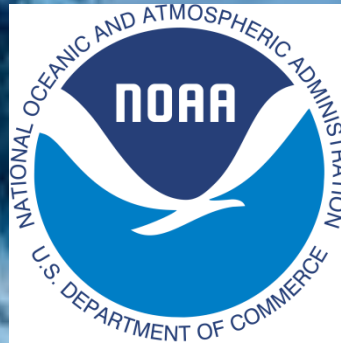
ENVIRONMENTAL STUDIES PROGRAM



- Funds research to inform decisions on ocean energy and marine mineral activities.
- Initiated in 1973 to support the U.S. DOI's offshore oil and gas leasing program (authorized by the OCSLA).
- Develops information to help comply with the ESA, MMPA, MBTA, NEPA, & other laws.
- Community coordination is important to identifying opportunities for leveraging.
- Partnerships play a pivotal role towards achieving mutual goals.

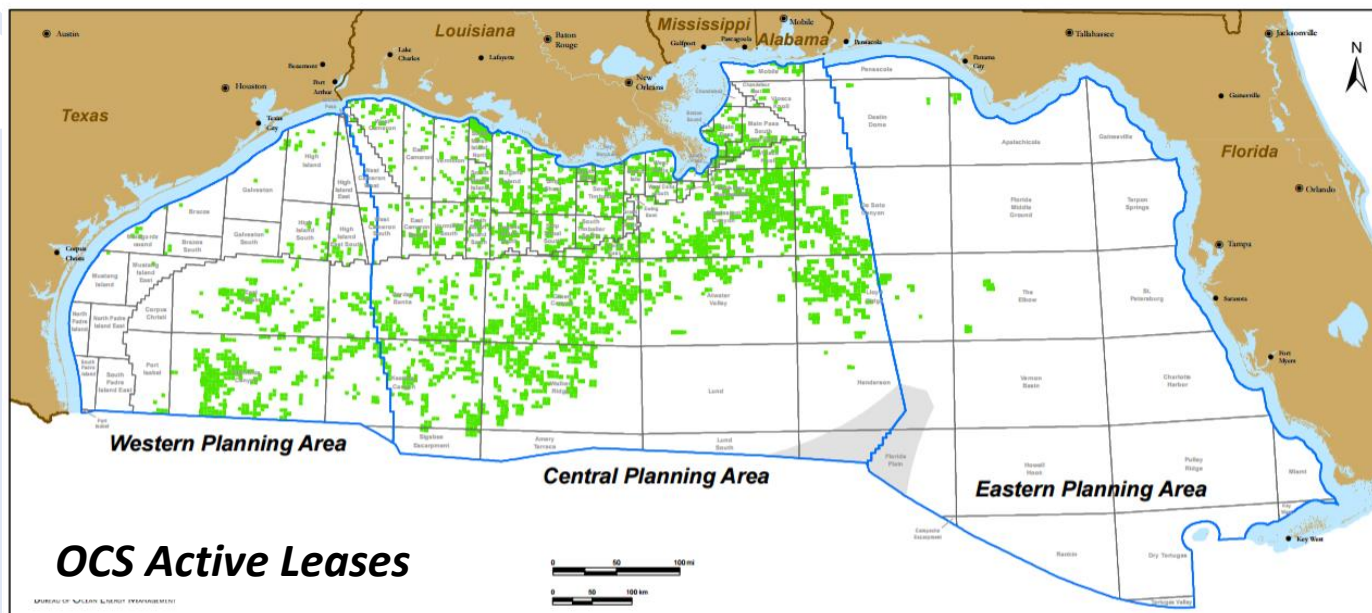


NOOP National Oceanographic
Partnership Program



GOMMAPPS GOALS

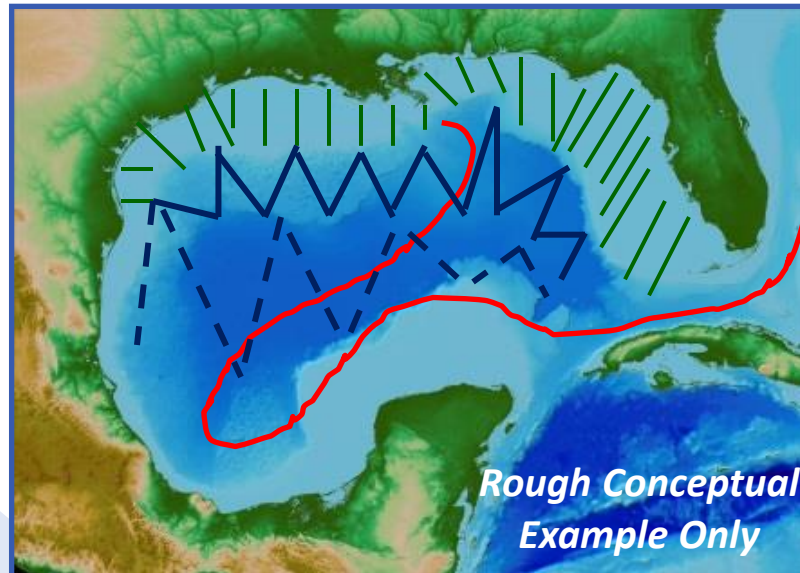
- Improve information on Gulf of Mexico marine mammals, sea turtles, and seabirds for mitigation and monitoring of impact-producing factors:
 - Underwater noise
 - Vessel traffic
 - Entanglement
 - Trash and debris
 - Discharges/produced water
 - Accidental spills



GOMMAPPS METHODS

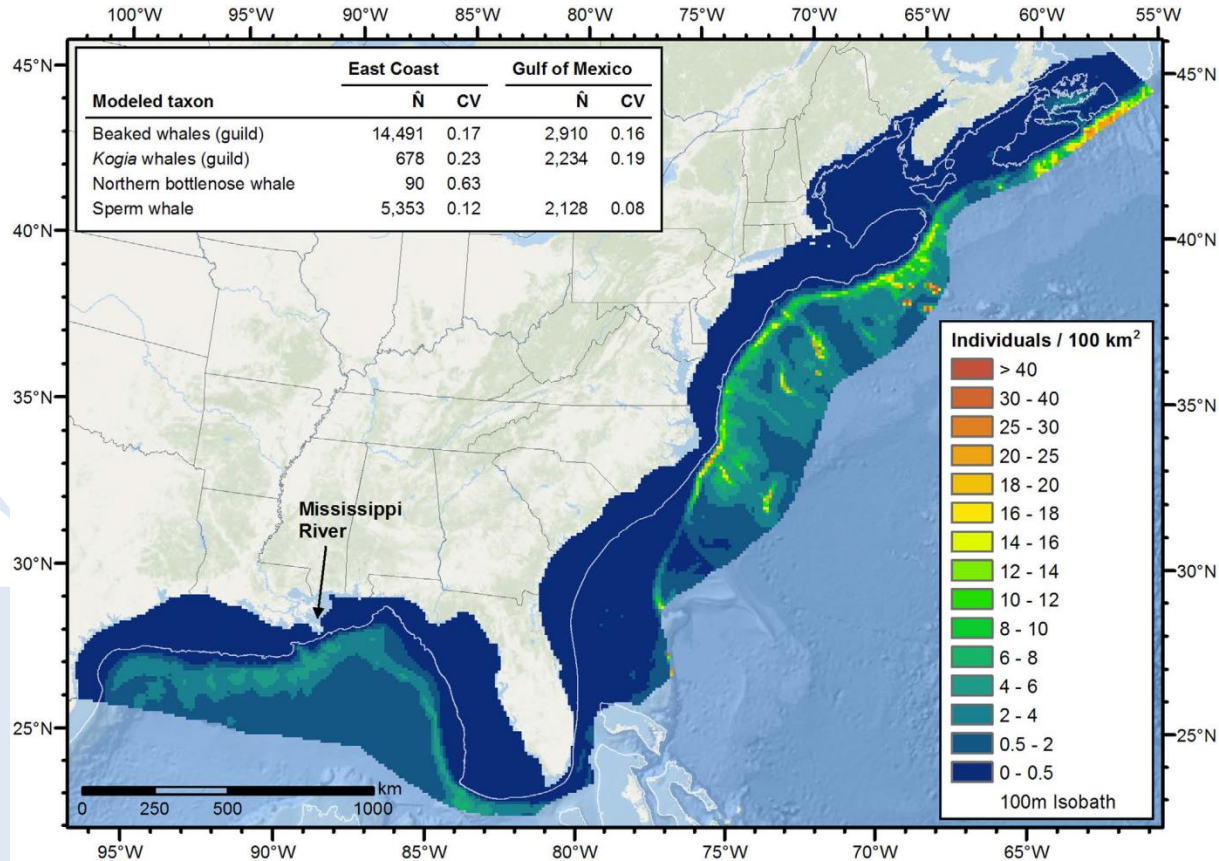
★ Collect broad-scale seasonal data using aerial and ship surveys to assess species distribution and abundance from nearshore to the EEZ.

- Initial survey design
- Collect habitat data
- Perform genetic analyses
- Conduct satellite tracking
- Model spatially explicit densities
- Data management



GOMMAPPS MODELING

Improve and Develop Species Density Models

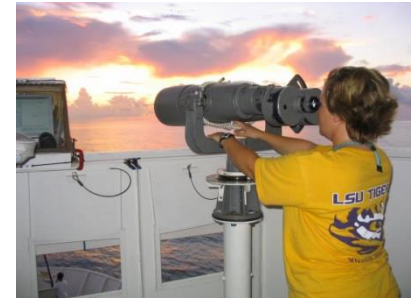


Roberts et al (2016)

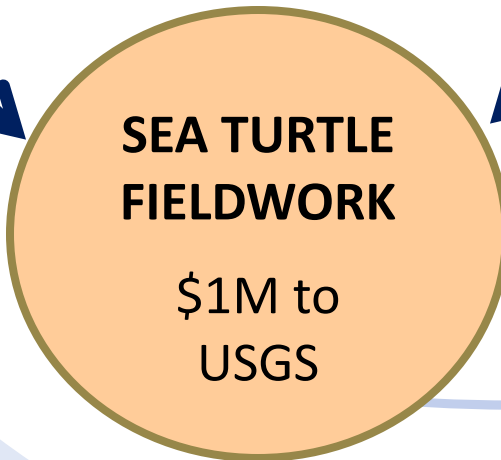
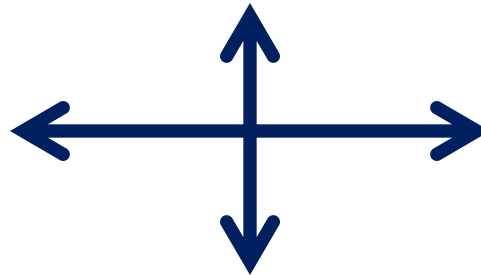
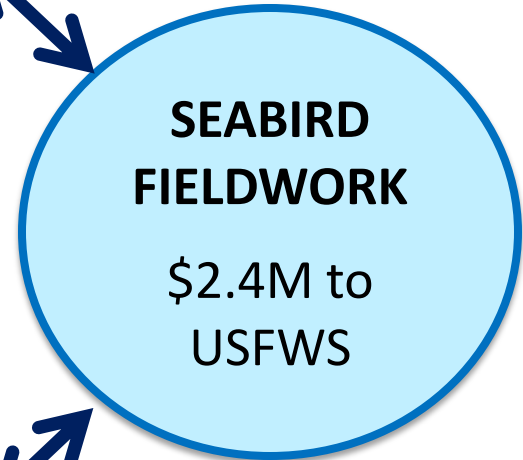
- Provide up-to-date seasonal data for all taxonomic groups

GOMMAPPS DATA PRODUCTS

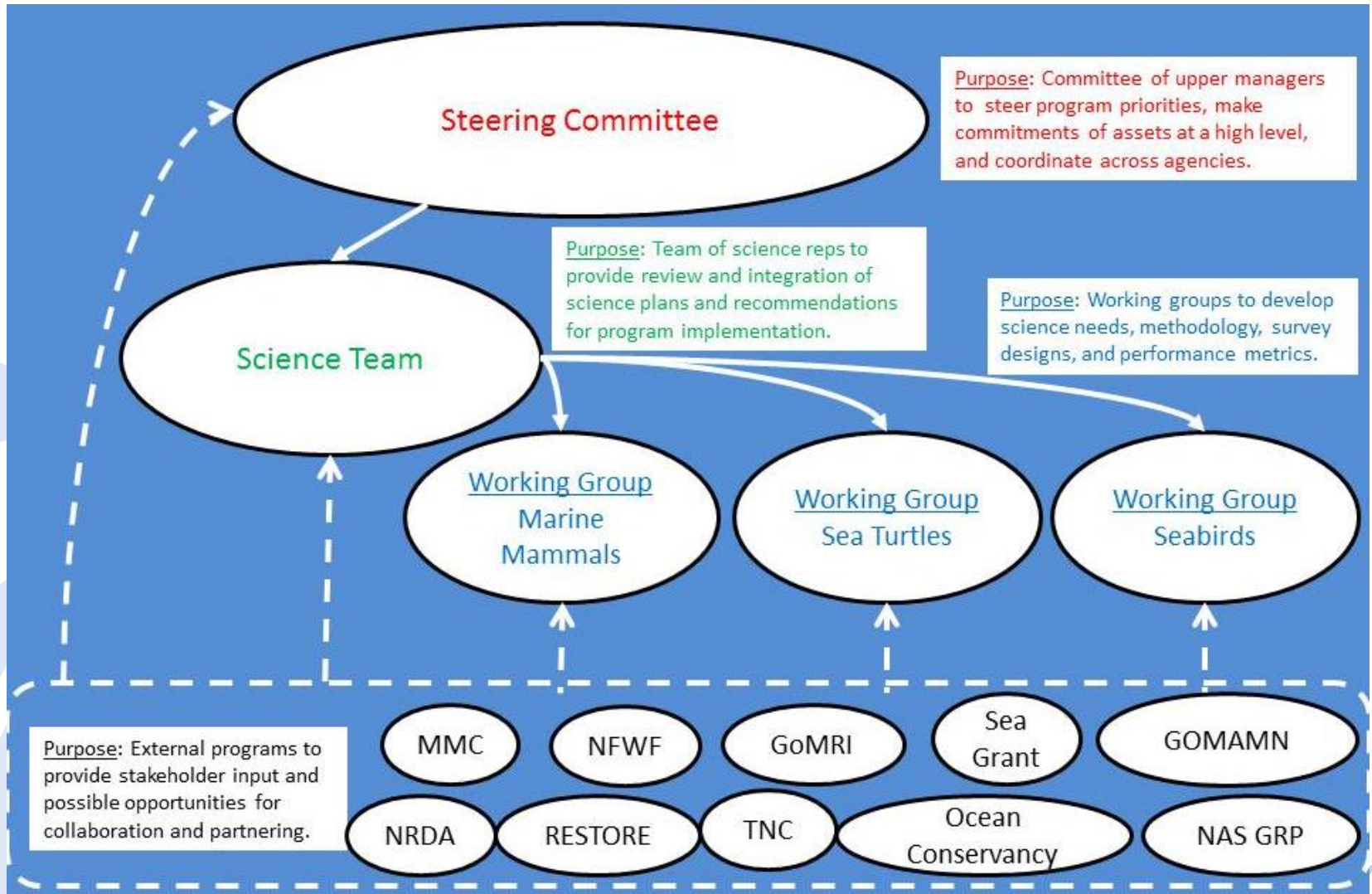
- Visual abundance/distribution data
- Automated imagery from camera systems
- Biopsy samples
- Satellite tagging data
- Passive acoustic sampling from towed array
- Environmental data
- Habitat-based density models



BOEM INTER-AGENCY AGREEMENTS



GOVERNANCE & COORDINATION



GOMMAPPS TIMELINE

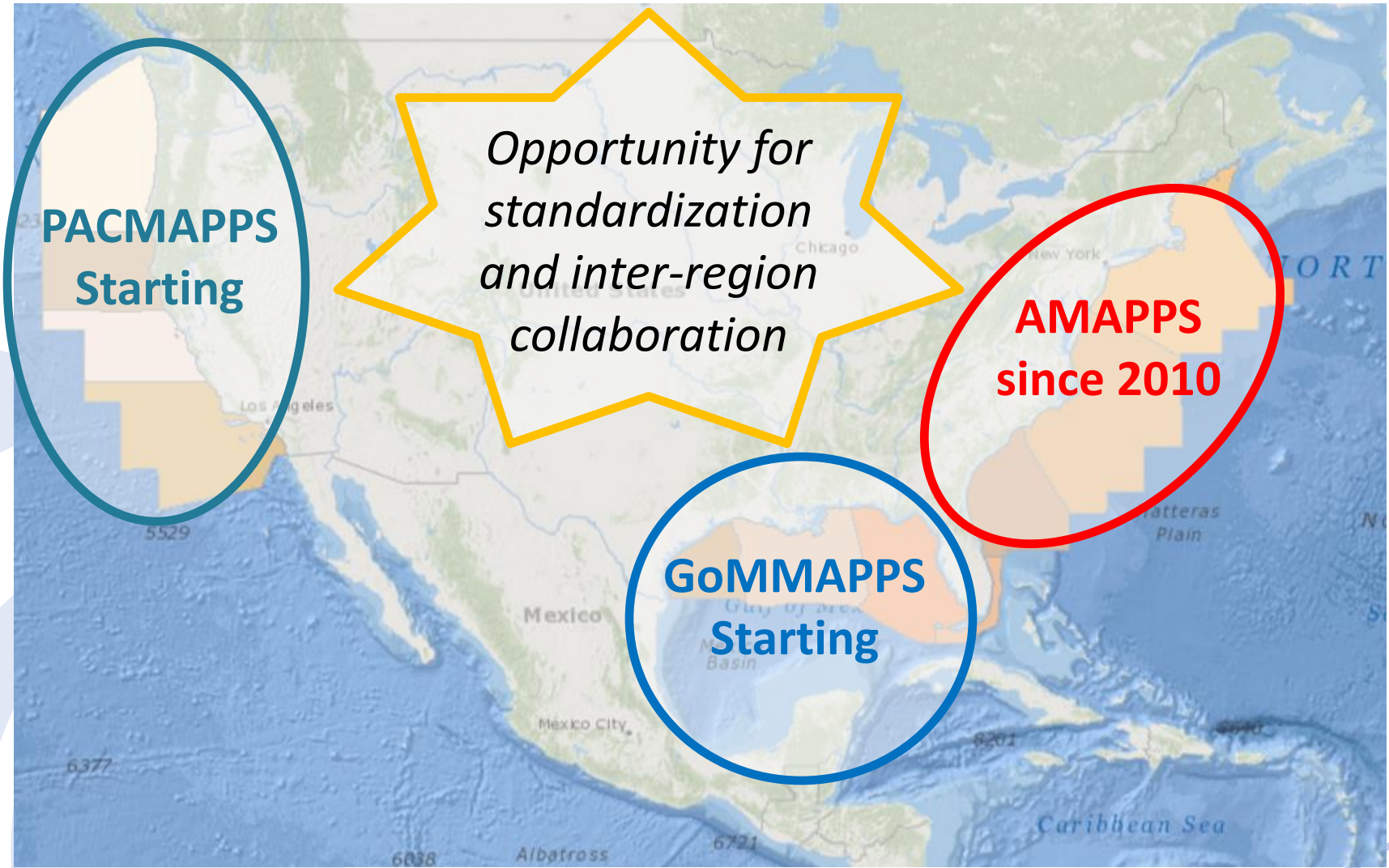


2017: First educational products & field surveys

- ❖ Website: www.boem.gov/GOMMAPPS/
- ❖ Conceptual data model
- ❖ Spring/summer ship and aerial surveys
- ❖ Hard-shell sea turtle tagging
- ❖ BOEM's Information Transfer Meeting



National Studies Perspective



Moving Forward

We welcome ideas for partnering and leveraging of the GoMMAPPS program to best meet mutual needs across the Gulf of Mexico community ...



Thank you! Questions?

Rebecca.Green@boem.gov