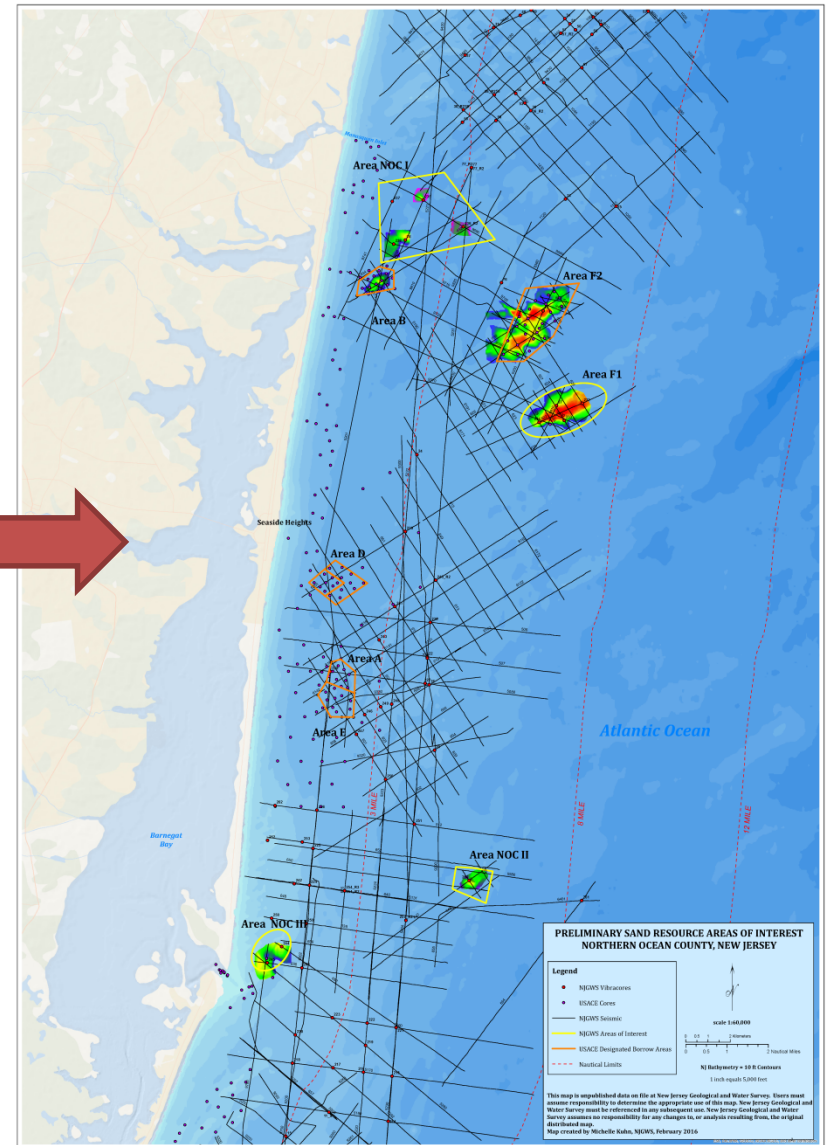
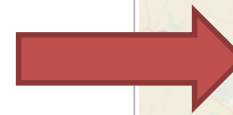
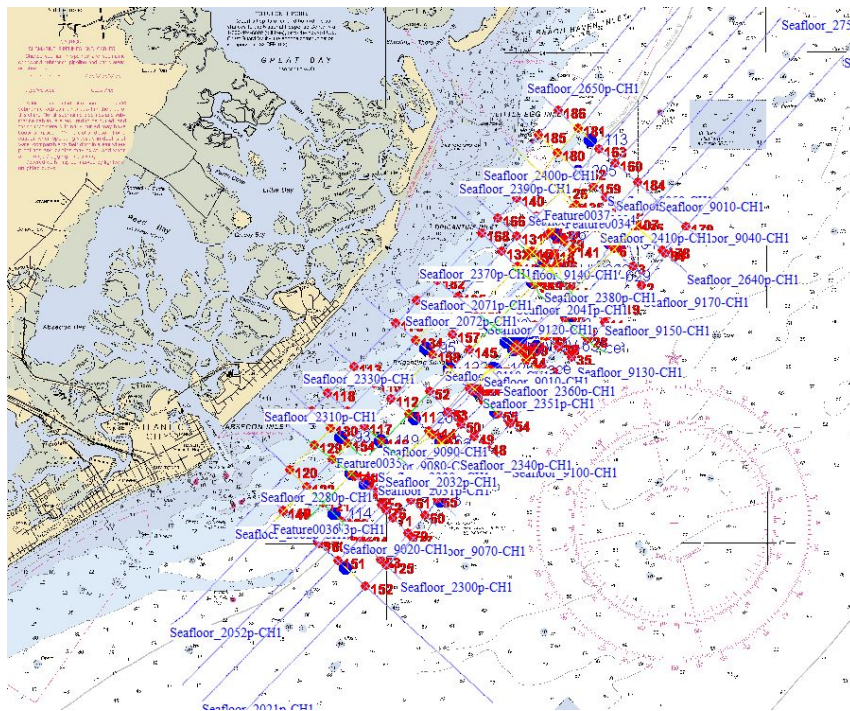
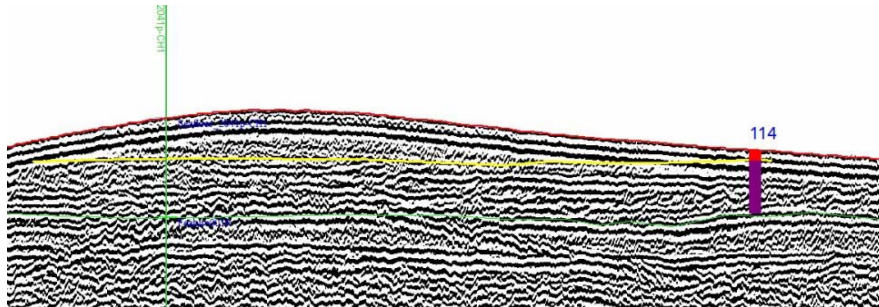


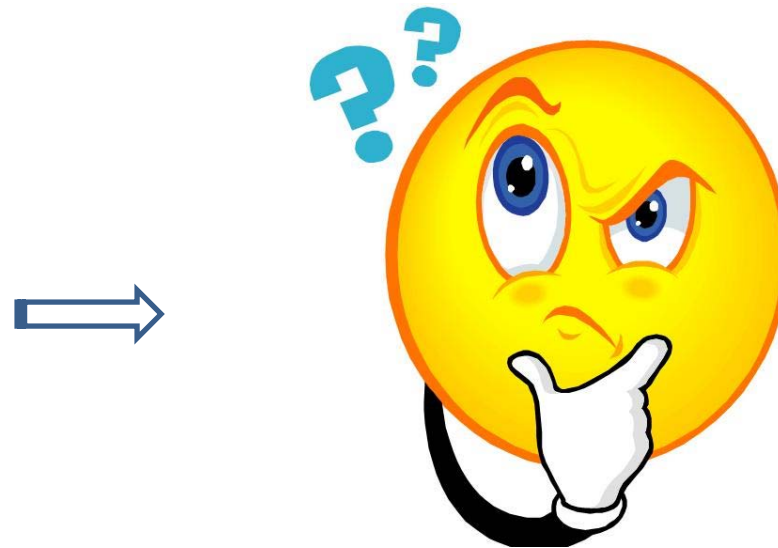
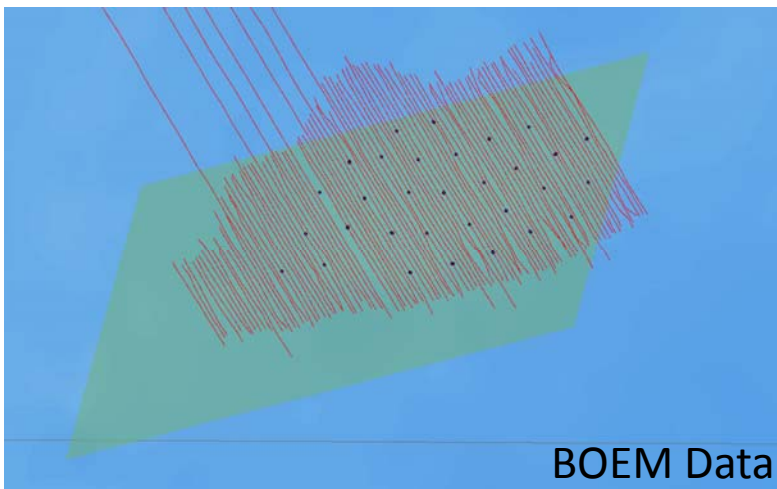
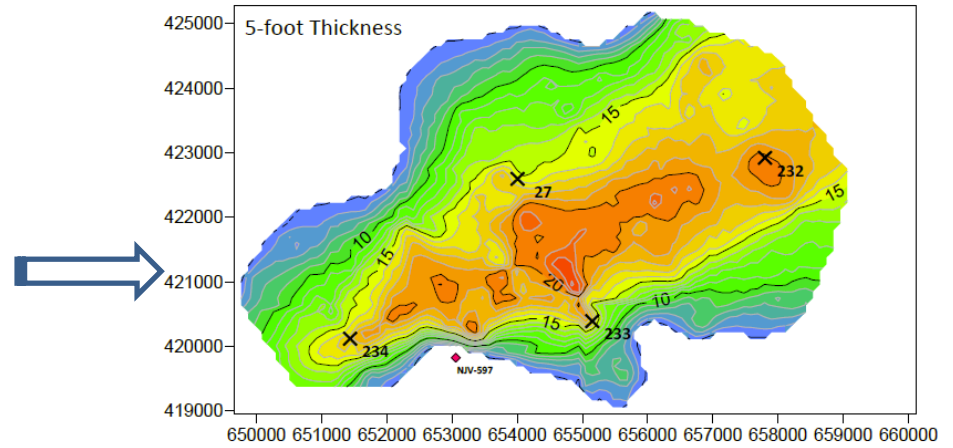
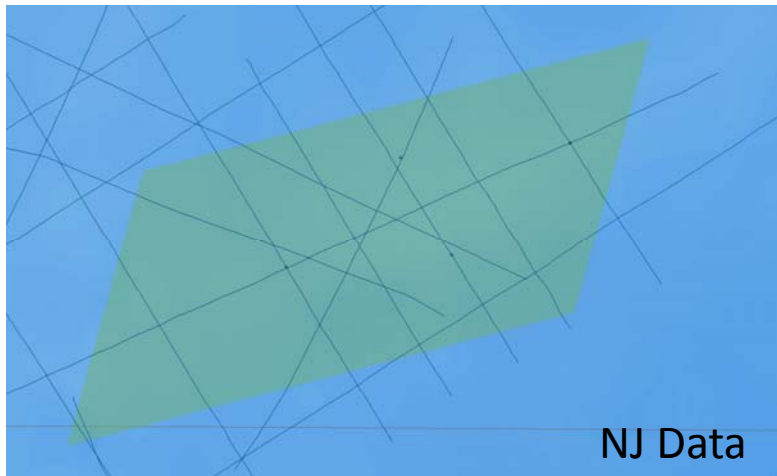
New Jersey

Type of Data	Raw Data Format (New acquisition/ BOEM ASAP data)	Anticipated Product Format	Related MMPGIS Feature Class/Dataset	System / Software / Methods for Analysis and Processing	Metadata available
- Bathymetry	.xyz	.img, .tif, ArcGIS grid, and .shp	Study Area Rasters, Mosaic Dataset, Study Area Contours	Surfer, ArcGIS, Matlab, Golden	Yes
- Seismic, Chirp Sub-bottom	.jsf, seg, sgy	.jpg, .shp, .seg	Study Area Rasters Dataset Sub Surface Geology Dataset Equipment Table	SonarWiz, SeiSee, SeisUNIX	Yes
- Sidescan Sonar	.jsf	.img, .tif, ArcGIS grid and .shp	Study Area Rasters Mosaic Dataset Seabed Features Dataset Equipment Table	SonarWiz	Yes
- Magnetometer	.raw	.txt, .img, .tif, ArcGIS grid and .shp	Study Area Rasters Mosaic Dataset Seabed Features Dataset Equipment Table	SonarWiz	Yes
- Spreadsheets	.csv, .xlsx	.csv, .xlsx	Variable depending on data within	Excel, ArcGIS	Yes
- Images/Photos/Maps	.jpg	.jpg, .pdf	Maps, Tables	ArcGIS	Yes
- Geotechnical Sample Analysis	gINT, .csv	.shp	Core Samples, Grab Samples, SPI Samples, Vibracores, Related Tables	Excel, ArcGIS	Yes

New Jersey Northern Atlantic County Sand Assessment



New Jersey F1 Design Level Technical Report



New Jersey

- Prepare a preliminary data synthesis and assessment in the form of a spatial coverage map or technical report for the remaining ASAP geophysical and geologic data coverage areas
- 129 Seismic Lines
- 57 Vibracore/grab samples



New Jersey

- Continued periodic updates and data exchange of the northern Ocean County offshore sand resources area that were initiated in the 2014-2016 Cooperative Agreement
- Technical Report delineating areas to be studied for future geophysical and geological surveys to fill data gaps that have been identified
- Administrative (quarterly reports, presentations, final summary)

Questions?

