

GoMMAPPS



Gulf of Mexico Marine Assessment Program for Protected Species

Rebecca Green, PhD
Senior Oceanographer
Environmental Studies Program
Gulf of Mexico Region

MEETING AGENDA

- Sign-In Sheet
- Open and Closed Sessions
- Q&A – Introductions & Related Projects
- Opportunity to provide written feedback



BOEM MISSION

Manage ocean energy and mineral resources on the Outer Continental Shelf in a safe and environmentally sound manner.



PROGRAM AREAS



Oil & Gas

5-year leasing plan
Regional lease sales



Renewable Energy

Site identification through stakeholder input and state task forces



Marine Minerals

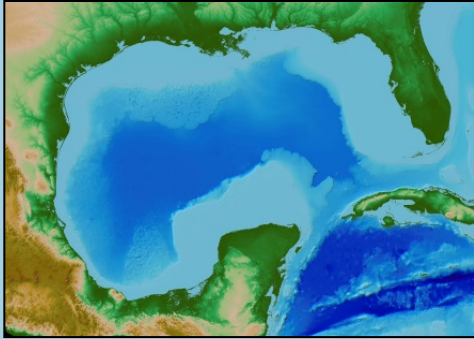
Through negotiated agreement with state and local entities

ENVIRONMENTAL MISSION

Use the best available science to protect the environment while ensuring the safe development of the nation's offshore energy and marine mineral resources.



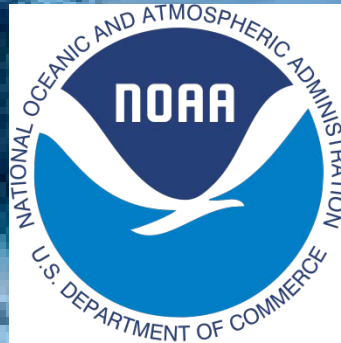
ENVIRONMENTAL STUDIES PROGRAM



- Funds research to inform decisions on ocean energy and marine mineral activities.
- Initiated in 1973 to support the U.S. DOI offshore oil and gas leasing program (authorized by OCSLA).
- Develop information to help comply with ESA, MMPA, MBTA, and other laws ...
- Community coordination important to identifying opportunities for leveraging.
- Partnerships play a pivotal role towards achieving mutual goals.



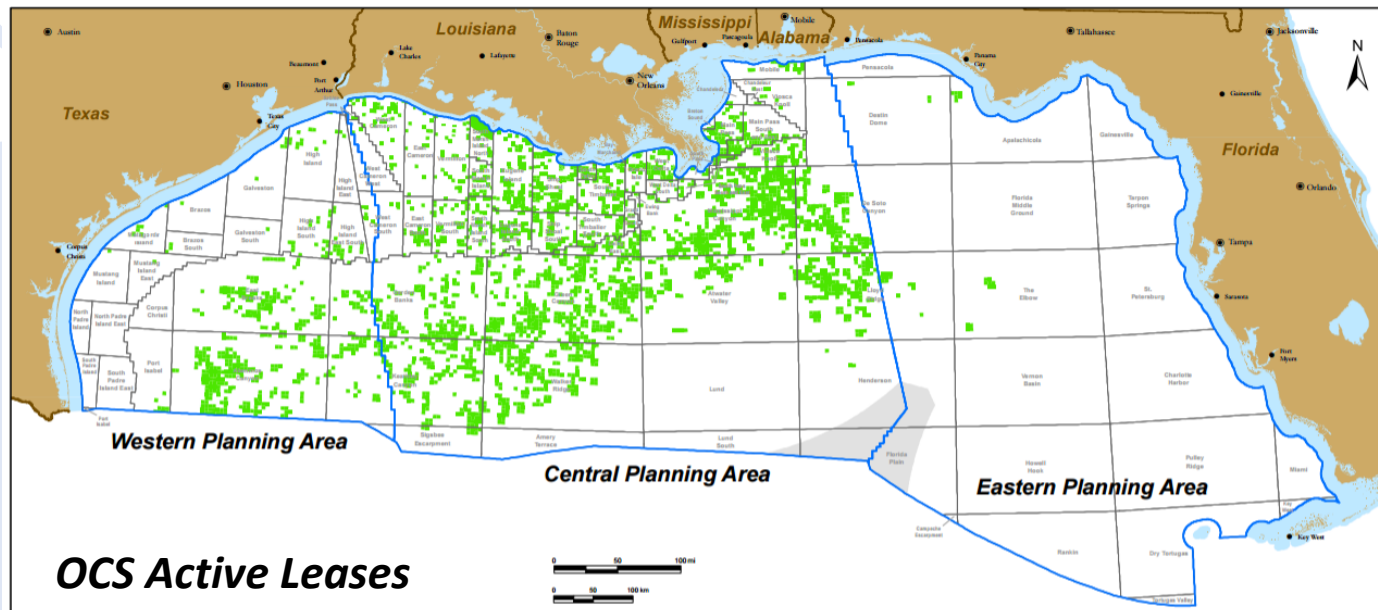
GoMMAPPS as a **New** NOPP Partnership



GOMMAPPS GOALS

- Improve information on Gulf marine mammals, sea turtles, and seabirds for mitigation and monitoring of impact-producing factors:

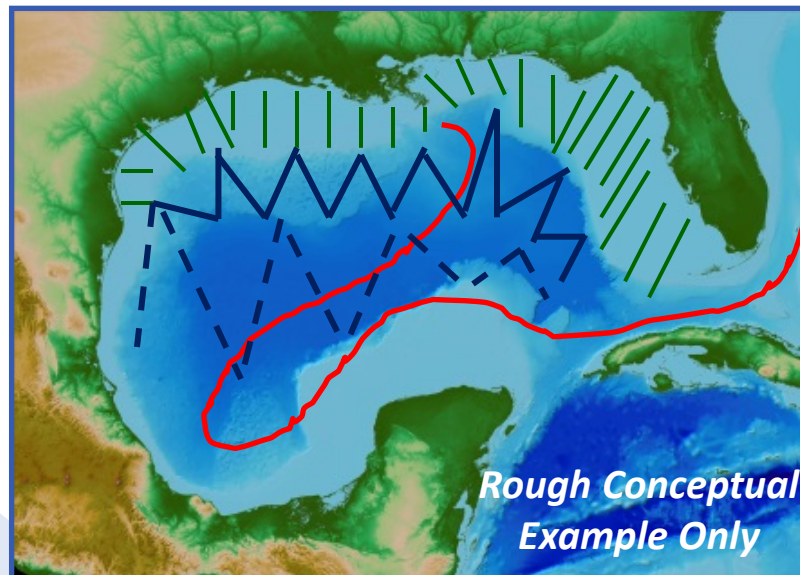
- Underwater noise
- Vessel traffic
- Entanglement
- Trash and debris
- Discharges/Produced water
- Accidental spills



GOMMAPPS METHODS

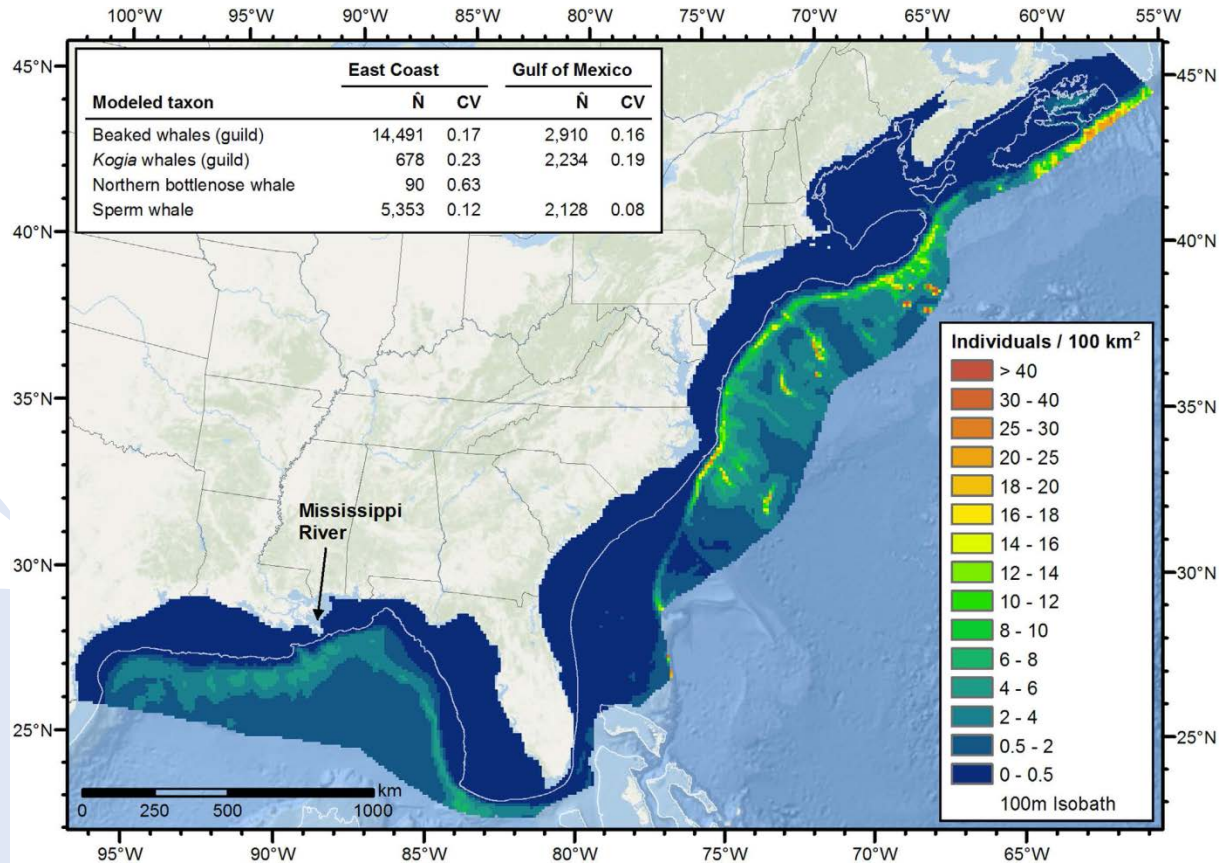
★ Collect broad-scale seasonal data using aerial and ship surveys to assess species distribution and abundance from nearshore to the EEZ.

- Initial survey design
- Collect habitat data
- Perform genetic analyses
- Conduct satellite tracking
- Model spatially-explicit densities
- Data Management



GOMMAPPS MODELING

Improve and Develop Species Density Models



Roberts et al (2016)

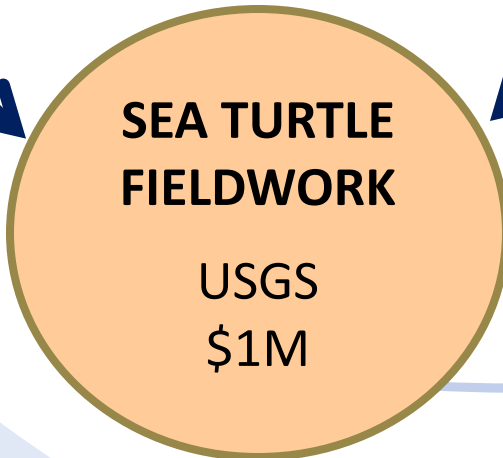
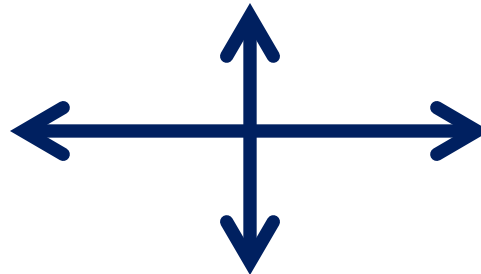
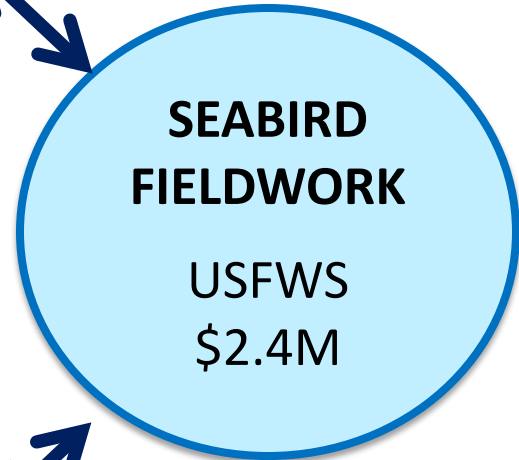
- Provide up-to-date seasonal data for all taxonomic groups.

GOMMAPPS DATA PRODUCTS

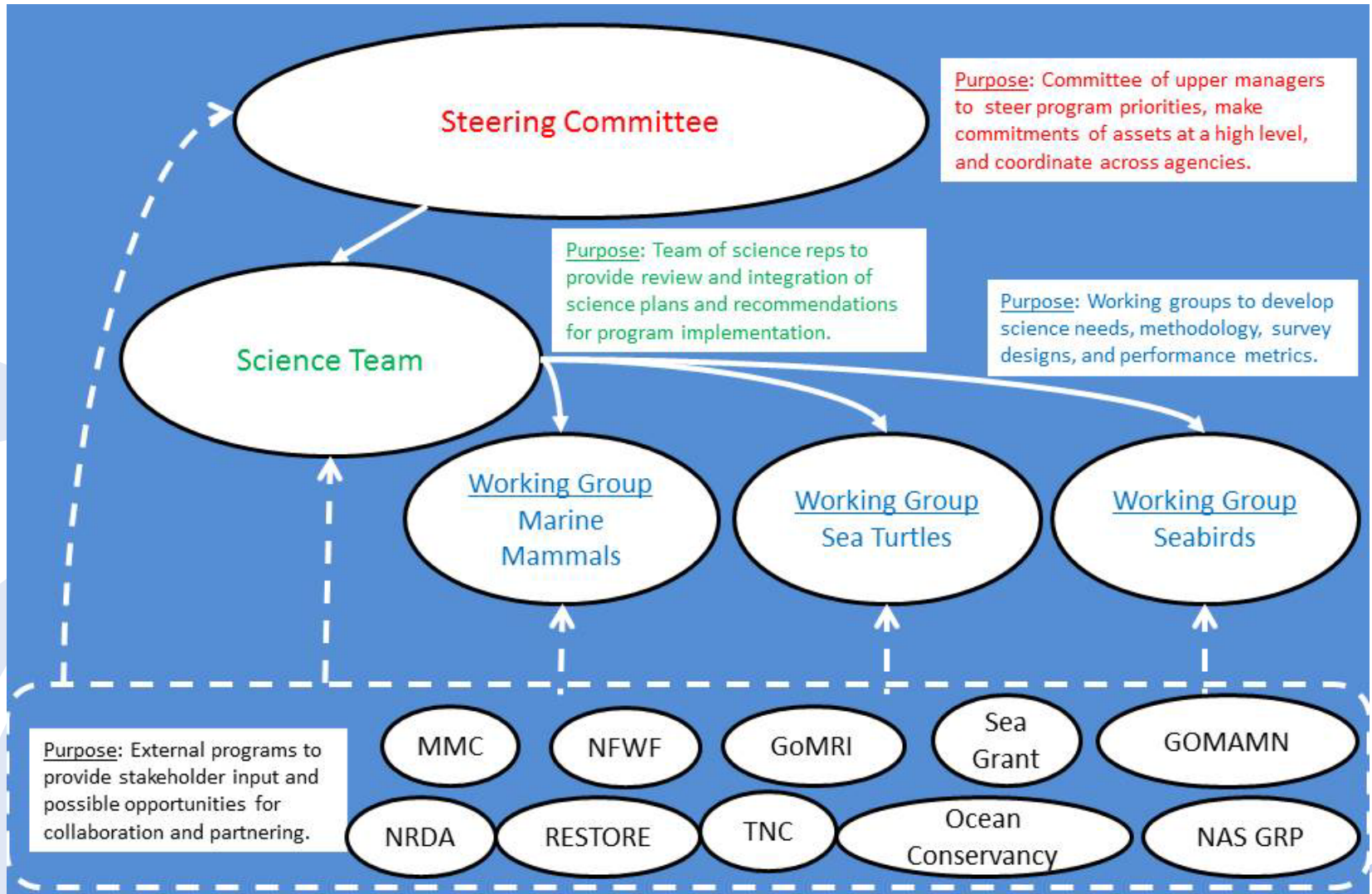
- Visual abundance/distribution data
- Automated imagery from camera systems
- Biopsy Samples
- Satellite tagging data
- Passive acoustic sampling from towed array
- Environmental data
- Habitat-based, density models



BOEM INTER-AGENCY AGREEMENTS



GOVERNANCE & COORDINATION



GOMMAPPS TIMELINE

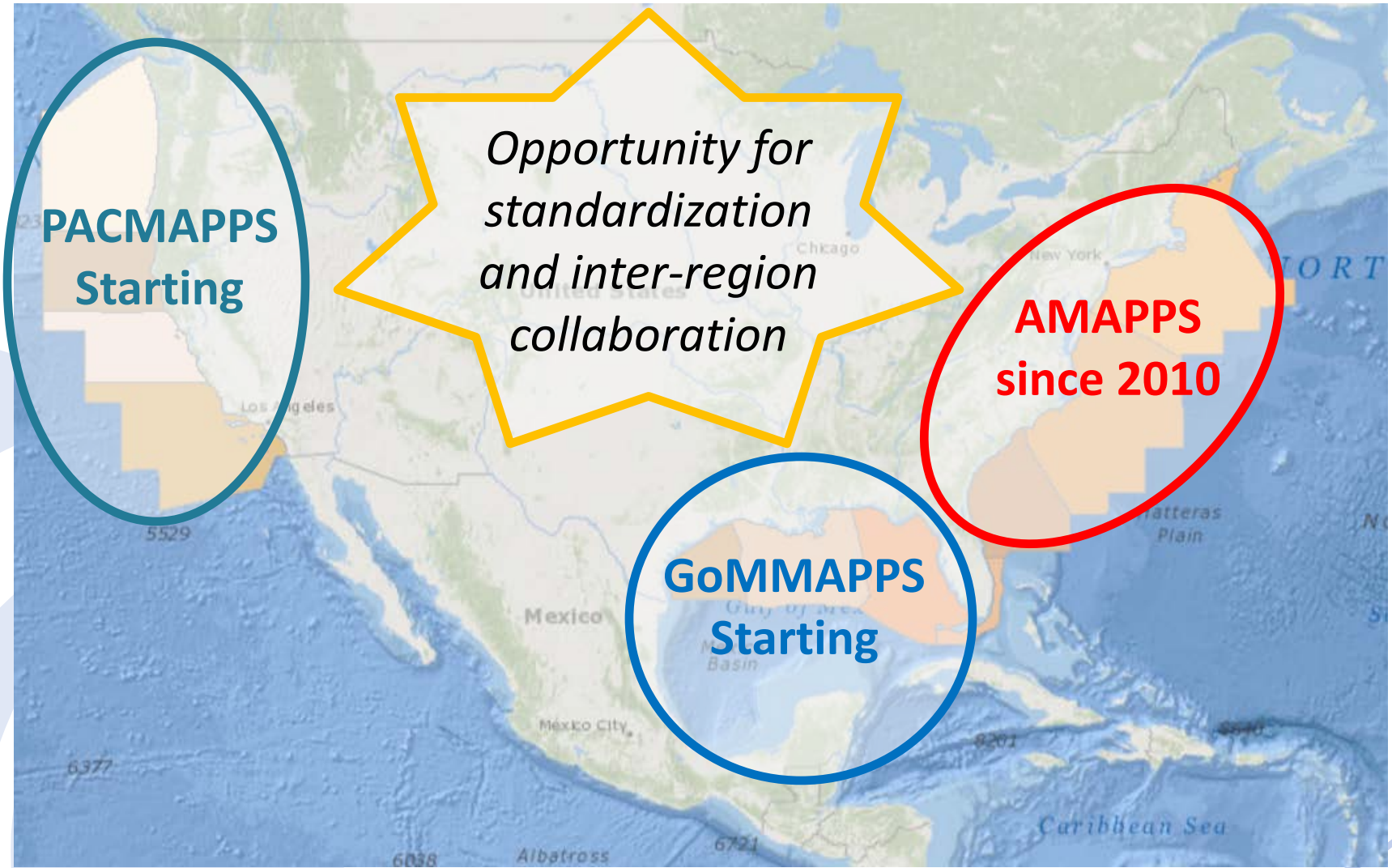


2017: First anticipated outreach and fieldwork products

- ❖ Conceptual Data Model
- ❖ Early summer ship and aerial surveys
 - FWS and NOAA aircraft on shelf
 - Vessel surveys out to EEZ
- ❖ Hard-shell sea turtle tagging
- ❖ BOEM Information Transfer Meeting



National Studies Perspective



Moving Forward

We welcome ideas for partnering and leveraging of the GoMMAPPS program to best meet mutual needs across the Gulf of Mexico community ...



Moving Forward

We welcome ideas for partnering and leveraging of the GoMMAPPS program to best meet mutual needs across the Gulf of Mexico community ...



Thank you! Questions?

Rebecca.Green@boem.gov