

MMP Stakeholder Outreach



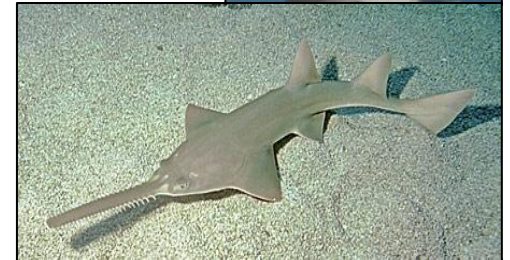
Restoring and Protecting Our Nation's Coasts through Stewardship of OCS Resources



BOEM
BUREAU OF OCEAN ENERGY MANAGEMENT



- Environmental Studies Program and Resource Evaluations Funding
 - **\$40 million** spent on non-energy resources since 1992
 - More than 40 site-specific and programmatic studies
- Science Strategy
 - Fill data gaps on how to avoid, minimize, and mitigate dredge impacts
 - Improve management with stakeholder engagement and regional partnering
 - Use data to support compliance



ANALYSIS OF POTENTIAL BIOLOGICAL AND PHYSICAL
IMPACTS OF DREDGING ON OFFSHORE RIDGE AND SHOAL FEATURES
FINAL REPORT





OCS sand identification and characterization
e.g., geotechnical and geophysical surveys



Biological measures
e.g., environmental windows, ecological recovery, behavioral response



Operation optimization
e.g., fates of fines, equipment modifications, borrow area design

“Productivity and Ecology of Sand Habitats”

- Sand lance: small, sand-dependent forage fish in NW Atlantic
- What drives productivity?
- How does dredging impact productivity? And other species?
- How do these impacts influence fisheries landings and value?



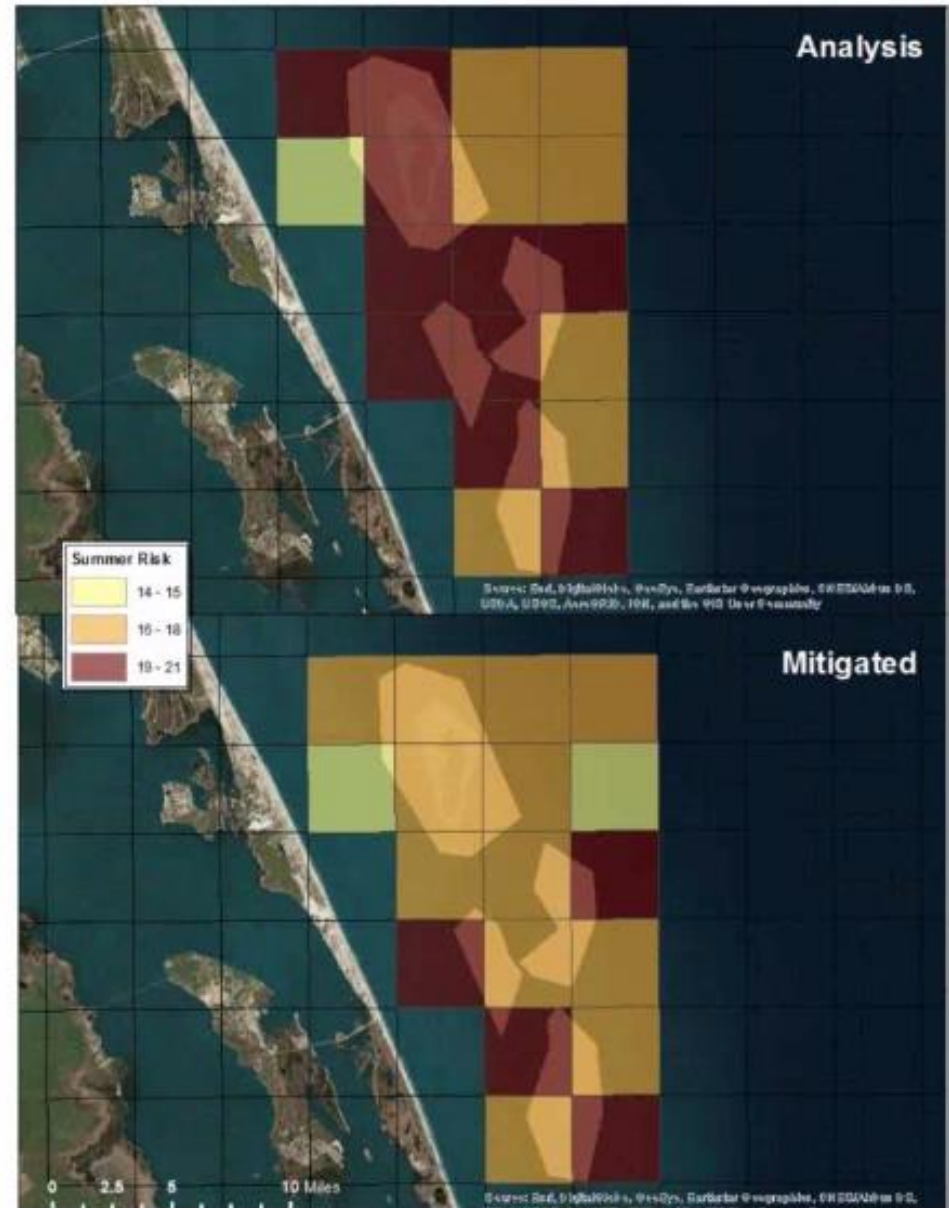
“Productivity and Ecology of Sand Habitats”

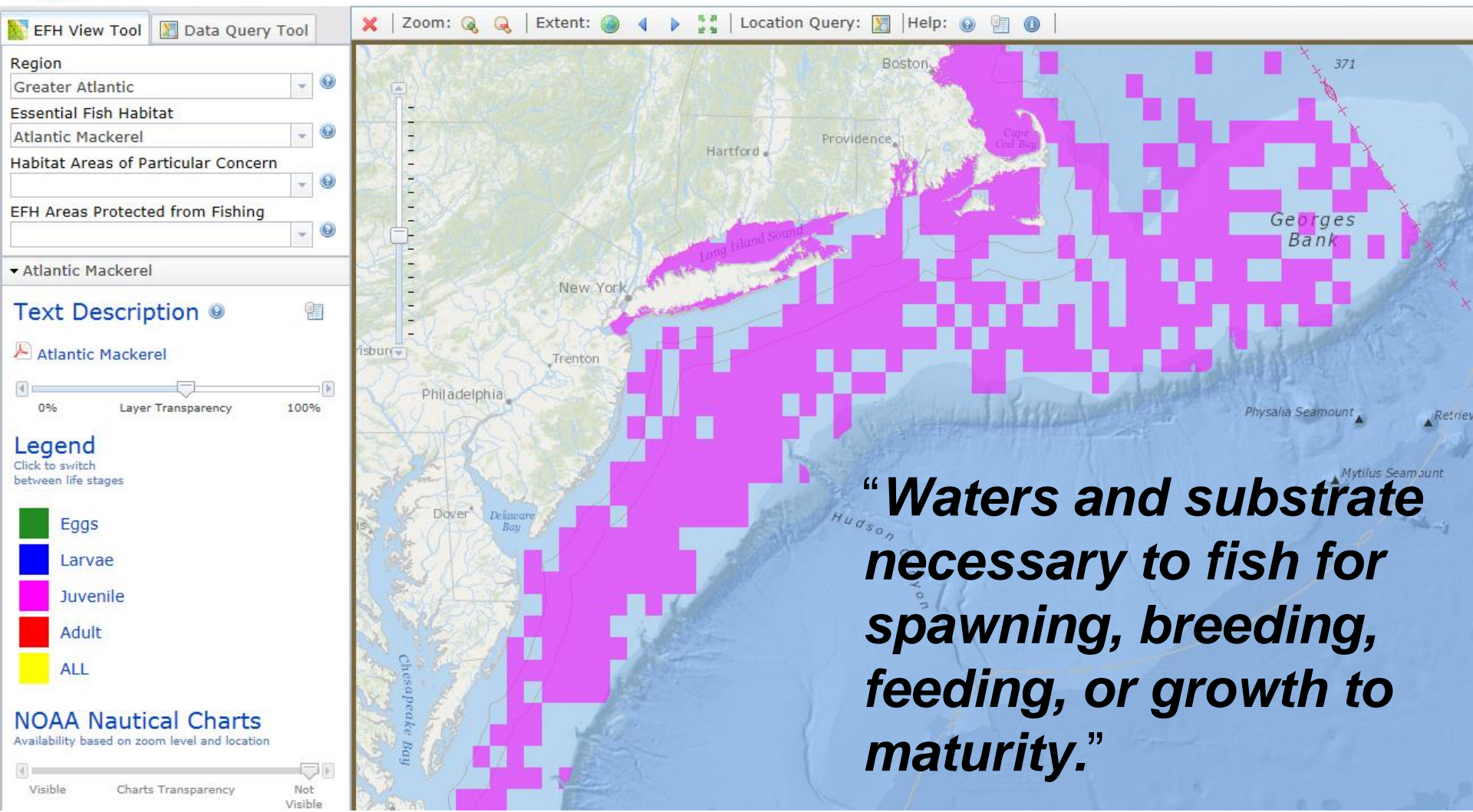
- Partners: NOAA, WHOI, Boston University, University of Connecticut
- Leverage existing sampling of Stellwagen Bank
- Important area for both productivity and fisheries



“Assessing Sea Turtle Entrainment Risk”

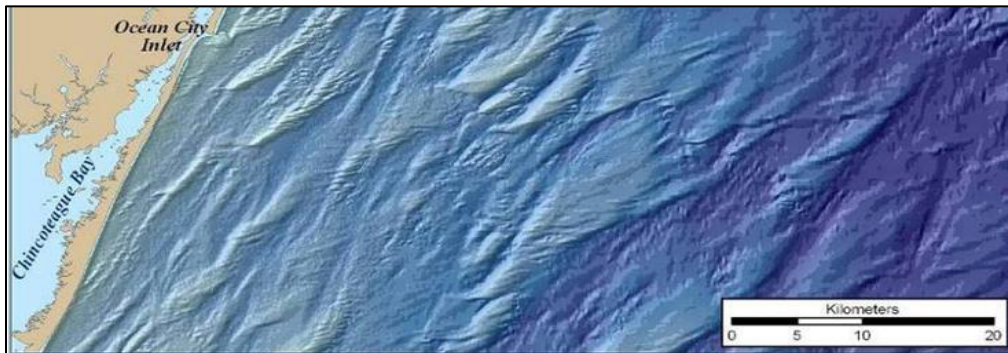
- Partners: USACE, NOAA, Duke University, QSI
- Where and when are sea turtles most susceptible to dredge entrainment?
- Support risk-based planning





“EFH Tool”

- Partners: NOAA, QSI
- Shoal complexes may be EFH
- Mitigation may apply to geological and biological features
- Overlay EFH, shoals, and borrow areas to better grasp scale of dredge impacts



- Lease recipients
 - Federal (e.g., USACE, Navy, NASA)
 - Localities (e.g., counties, towns)
- Consultation agencies
- Stakeholders
 - Academia
 - Regional planning bodies
 - Commercial, charter, and recreational fisheries
 - Renewable energy
 - Other uses (e.g., recreation, cables)
- Environmental Studies
 - Agreements (e.g., states, universities)
 - Private contractors



- Conferences
 - American Shore and Beach Preservation Association
 - American Fisheries Society
- Meetings
 - MARCO/NROC
 - Sand Management Working Groups
 - Internal and with other agencies
 - As needs arise



July 26, 2017 in Toms River, NJ

- Objectives
 - Share information
 - Begin building a relationship with the community
 - Plan for future communication
- Participants (24 total)
 - Regional fishing industry members
 - State and federal partners





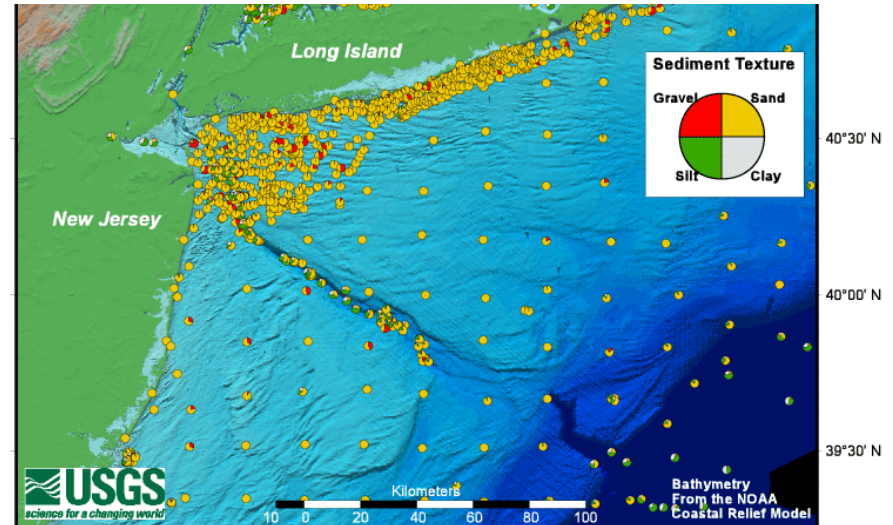
July 26, 2017 in Toms River, NJ

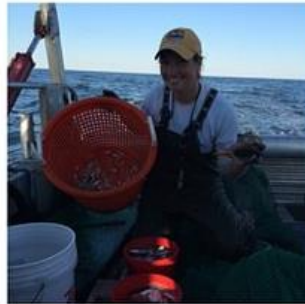
- Themes discussed
 - Coordination and engagement
 - Dredging impacts
 - Dredging options and suggestions
- Next steps
 - Lease requests on MMP website
 - Prioritizing action items



- Please sign up for MMP's Note to Stakeholders
- Other Stakeholder Interests?

- NY Bight Study Profile
 - From federal, state, and stakeholder (including fishermen) input
 - Proposed for 2018 but pushed to 2019 due to funding
- Study ideas from partners will be solicited Dec/Jan 2017





Deena Hansen

Oceanographer

Sterling, VA – Environmental Programs

Deena.Hansen@boem.gov

703-787-1653

