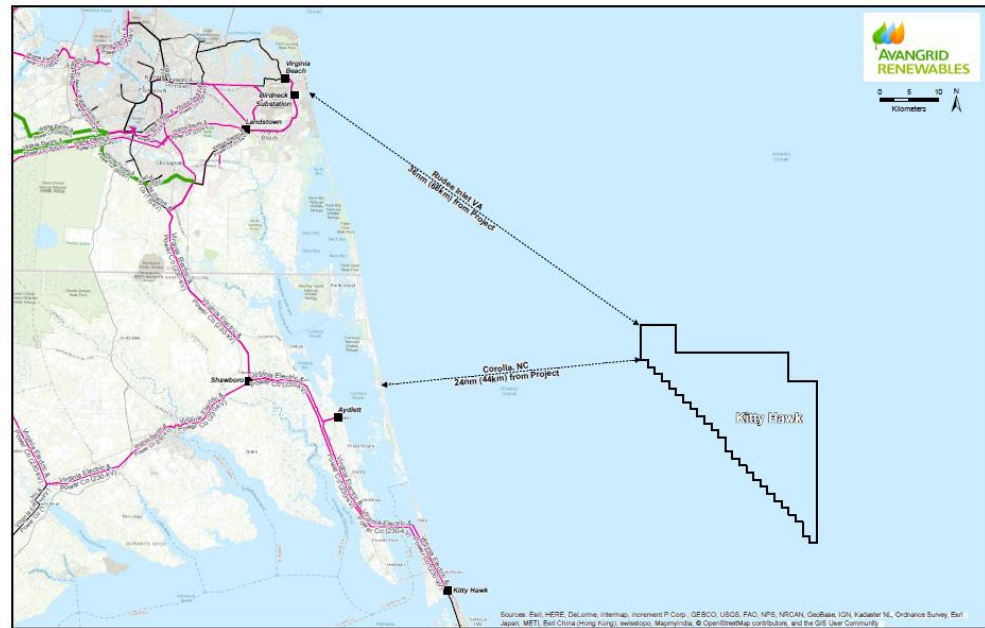




AVANGRID  
RENEWABLES

July 2019

# Kitty Hawk Offshore Wind



# Kitty Hawk activities

---

2018

Planning, assessment & stakeholder outreach

2019

Planning, assessment & stakeholder outreach

Aerial Surveys of wind energy area – Avian, Marine Mammals, Sea Turtles, Fish

Marine geophysical & benthic reconnaissance surveys

PJM Interconnect applications (3 x 800)

SAP submission - September

2020

Planning, assessment & stakeholder outreach

FLiDAR & metocean deployment

Aerial Surveys of wind energy area – Avian, Marine Mammals, Sea Turtles, Fish

Marine geophysical, geotechnical & benthic surveys of potential project area(s) & cable routes

Potential

2021-2022

Planning, assessment & stakeholder outreach

Project 1 COP submission

Project 1 permitting

2023 Onshore construction

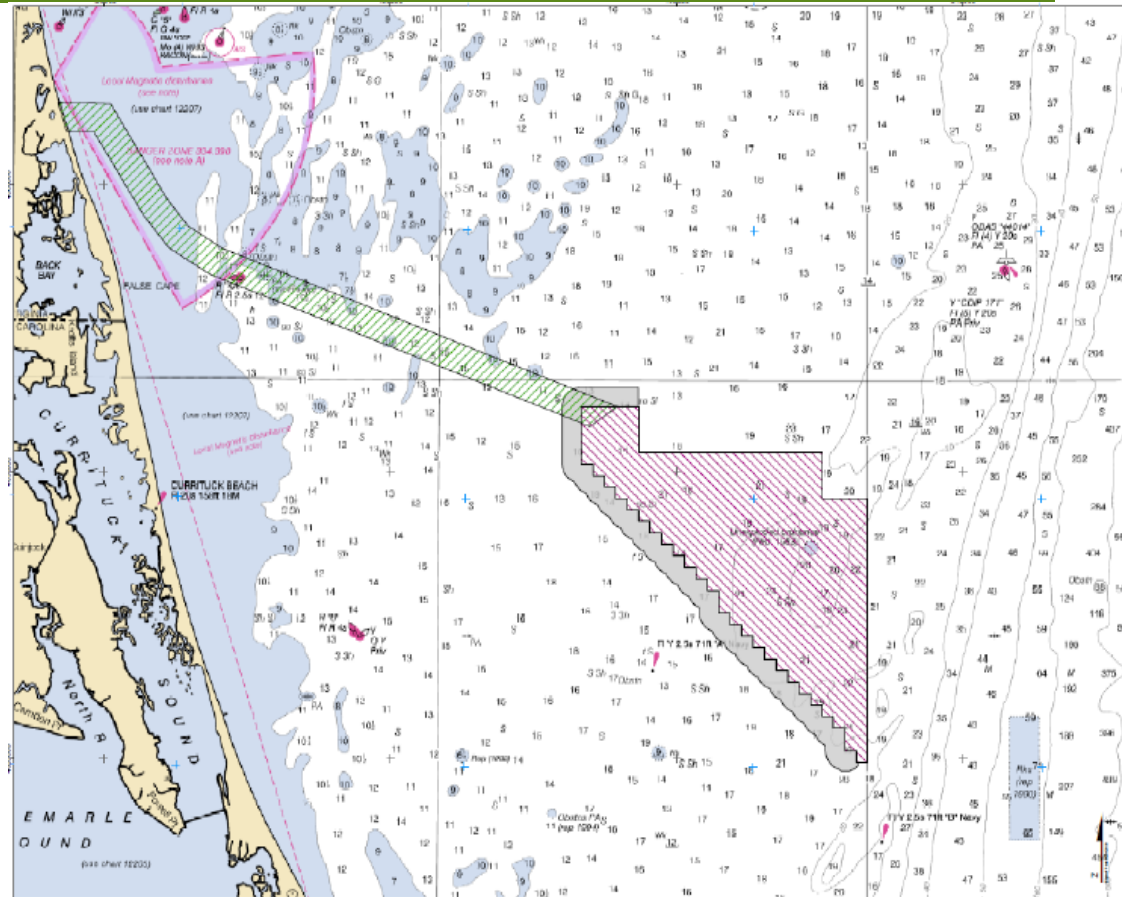
2024-2025 Offshore construction

# Geophysical & benthic surveys

Collecting data in  
cable route and  
wind energy area

## Coordination

- DoD
- NASA
- NOAA/NMFS
- USACE
- Fisheries



# Geophysical & benthic surveys

## De-conflicting activities

## Fisheries Liaison

- FathomEdge Limited

Rick Robins

757.876.3778

rick@fathomedgelimited.com

## NOTICE TO OFFSHORE FISHING FLEET EAST OF NC AND VA

OFFSHORE BATHYMETRIC SURVEY ACTIVITY

JUNE – OCTOBER, 2019

This summer and fall, Avangrid Renewables will continue to study the Kitty Hawk Offshore Wind Lease Area (OCS-A 0508) by conducting High Resolution Geophysical Surveys. The purpose of the surveys is to characterize seabed/sub-surface conditions in the Kitty Hawk Offshore Wind Lease Area. Survey work will include multibeam bathymetry, magnetic measurements, side scan sonar imaging, seabed stratigraphy, benthic sediment sampling and video imaging.

Fishermen fishing or transiting northeast of Oregon Inlet, NC and southeast of Virginia Beach, VA are encouraged to note the survey area locations, activities, and timing. The Wind Lease Area is WSW of the Cigar and WNW of the Foul Area, seaward from 36 nm SE of Rudee Inlet and 24 nm E of Corolla, NC. The cable corridor extends SE from Sandbridge, VA, through the area of the 4A buoy, passing south of the Horseshoe, connecting with the NW corner of the Wind Lease Area. Survey equipment will be towed up to 1,000 feet behind the vessels. Survey vessels have limited maneuverability and a 1 mile closest point of approach is requested. Fishermen are requested to move any fixed fishing gear out of the survey area during the survey period (June 25 through October 15, 2019) to avoid loss or damage to fishing gear or survey equipment. Please contact Rick Robins, Fisheries Liaison, with any questions or concerns. Survey vessels will monitor VHF 16 and 13.



### When will the survey occur?

- The survey will be 24 hours a day, 7 days a week from June 25, 2019 to October 15, 2019; weather dependent.

### Where will the survey occur?

- In and near the Wind Lease Area and proposed Cable Corridor from Sandbridge, VA to east of Corolla NC. (see map on the next page)

### Who will be conducting the survey?

- The offshore survey vessel M/V Gerry Bordenlon and near shore Survey Vessel Theory are operated by TerraSond. (see vessel info. below)

### Who should I contact with questions?

- Fisheries Liaison - Rick Robins (757) 876 - 3778 rrr@fathomedgelimited.com
- Project Manager - Jennifer Eastaugh (617) 981 - 5530 jennifer.eastaugh@avangrid.com



SURVEY VESSEL THEORY (NEARSHORE)



M/V GERRY BORDENLON

Owner/Manager  
Theory Marine Services  
Communications  
Length  
16' 5 & 13  
37 ft.

Owner/Manager  
Bordenlon Marine, LLC  
Communications  
Length  
16' 5 & 13  
170 ft.



# Geophysical & benthic surveys –



170' Gerry Bordelon  
~28 crew (incl PSOs)



37' Theory  
~7 crew (incl PSOs)





# Geophysical & benthic surveys

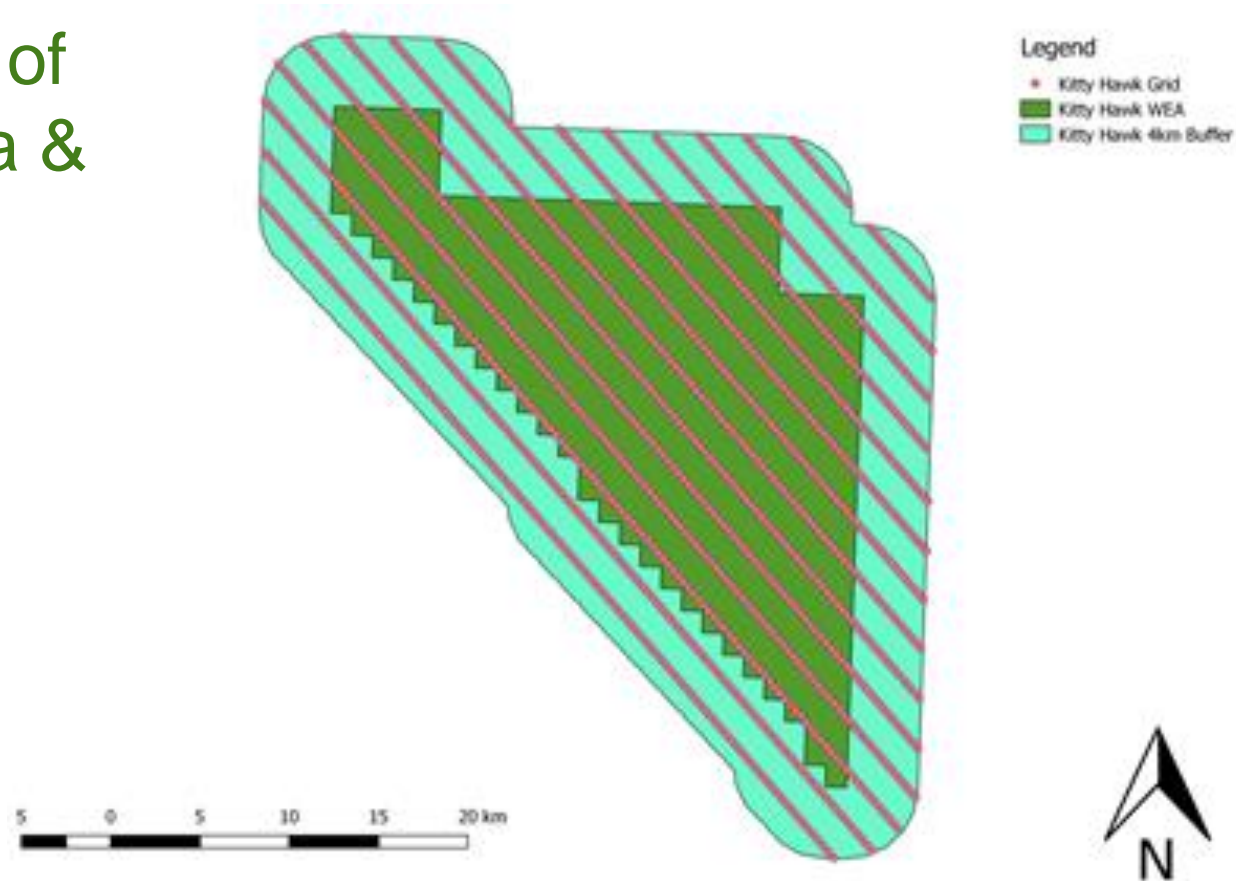


# Aerial surveys – APEM Ltd

Monthly surveys of  
wind energy area &  
buffers

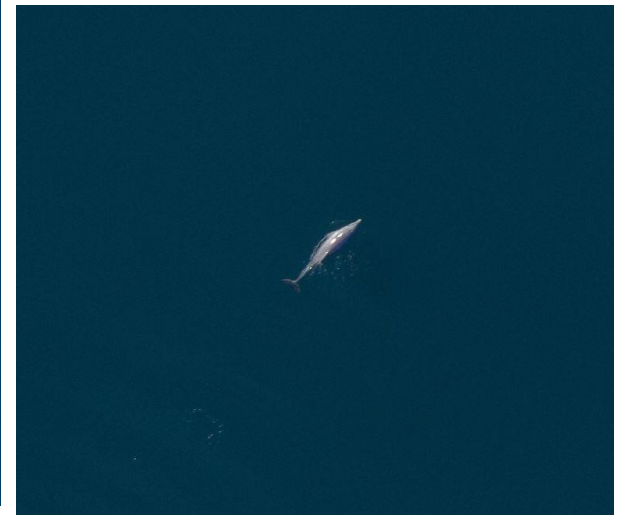
Coordination

- DoD
- NASA
- USFWS
- NCWRC





## Highlights from JAN – MAR aerial surveys





---

**For more information:**

**[www.avangridrenewables.com/kittyhawk](http://www.avangridrenewables.com/kittyhawk)**

**Questions?**

**Craig Poff**

**Director of Development, Kitty Hawk**

**[craig.poff@avangrid.com](mailto:craig.poff@avangrid.com)**

**610.230.0332**