



**CAL POLY**  
SAN LUIS OBISPO

## California Marine Renewable Energy Commercial and Industrial Support Environment

### **Marine Energy Technology and Deployment Panel**

William Toman, Cal Poly, San Luis Obispo

BOEM Offshore Renewable Energy Workshop

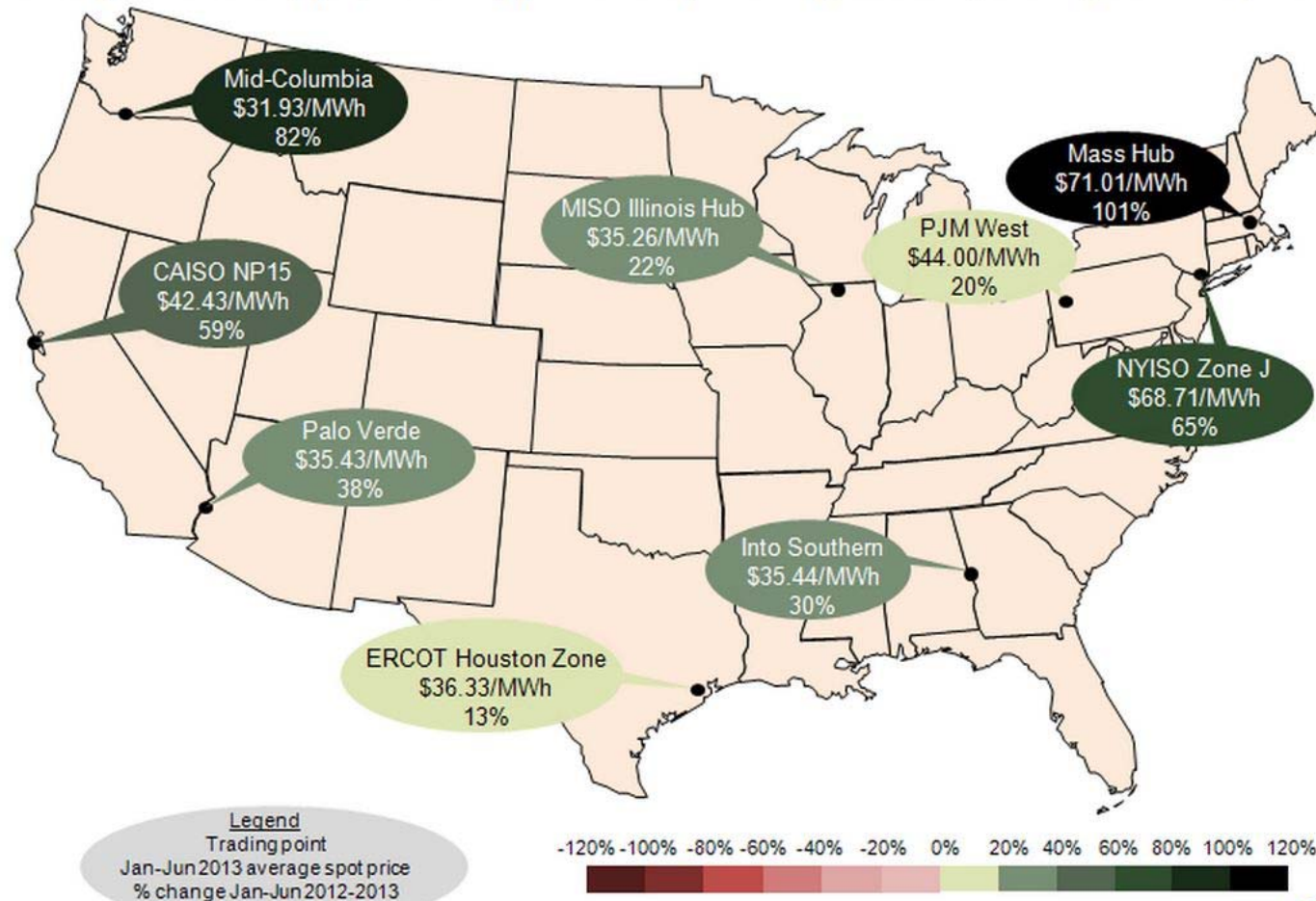
Sacramento, CA

July 30, 2014

# Why California?

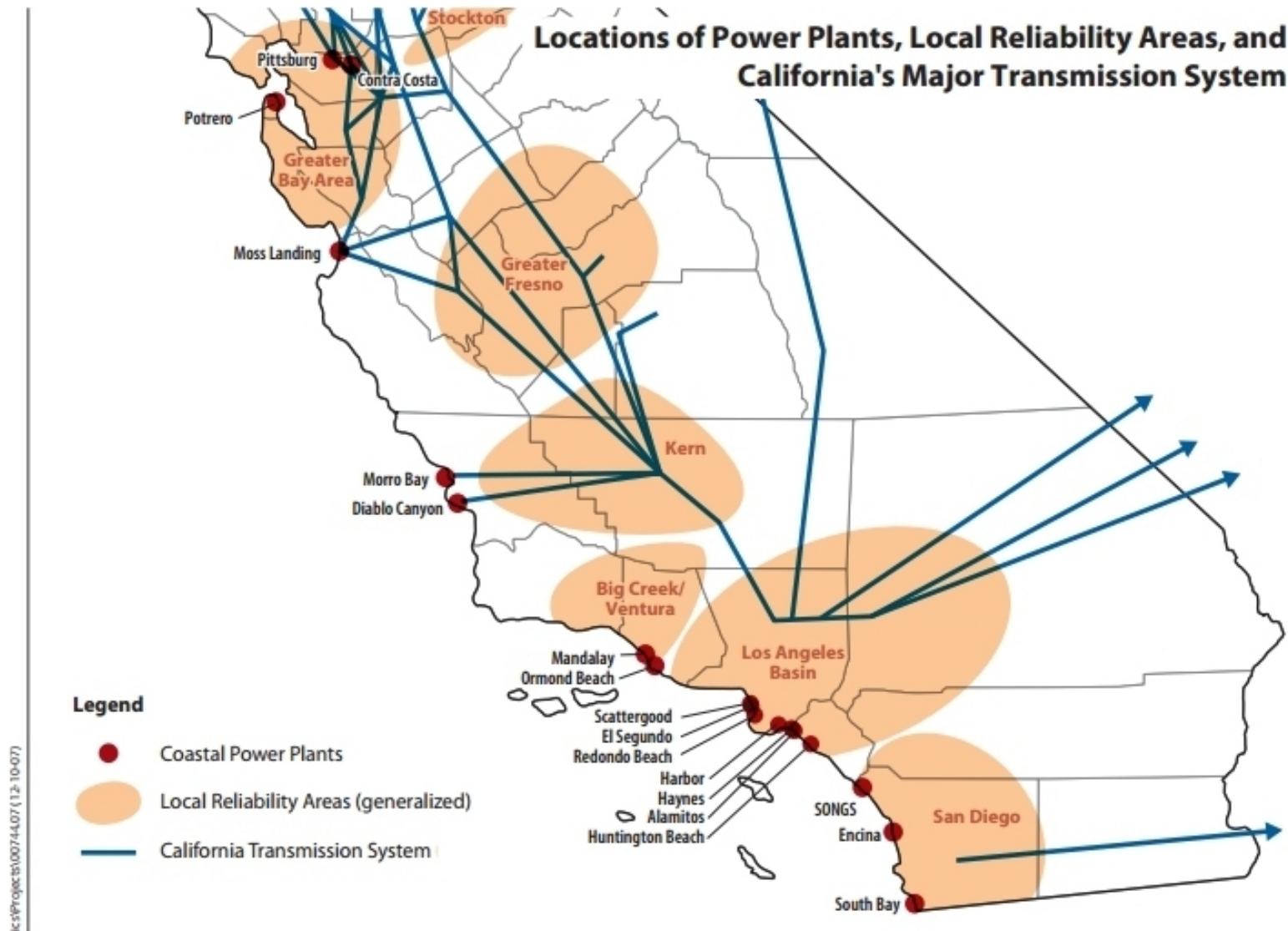
- Biggest Power Market in U.S. = 60,000 MW
- Highest West Coast Electricity Prices (AK & HI Are Higher)

Average wholesale (spot) electricity prices at major trading locations, January 1-June 30, 2013



# Why California?

- Largest Coastal Grid Infrastructure Potentially Available for New Generation





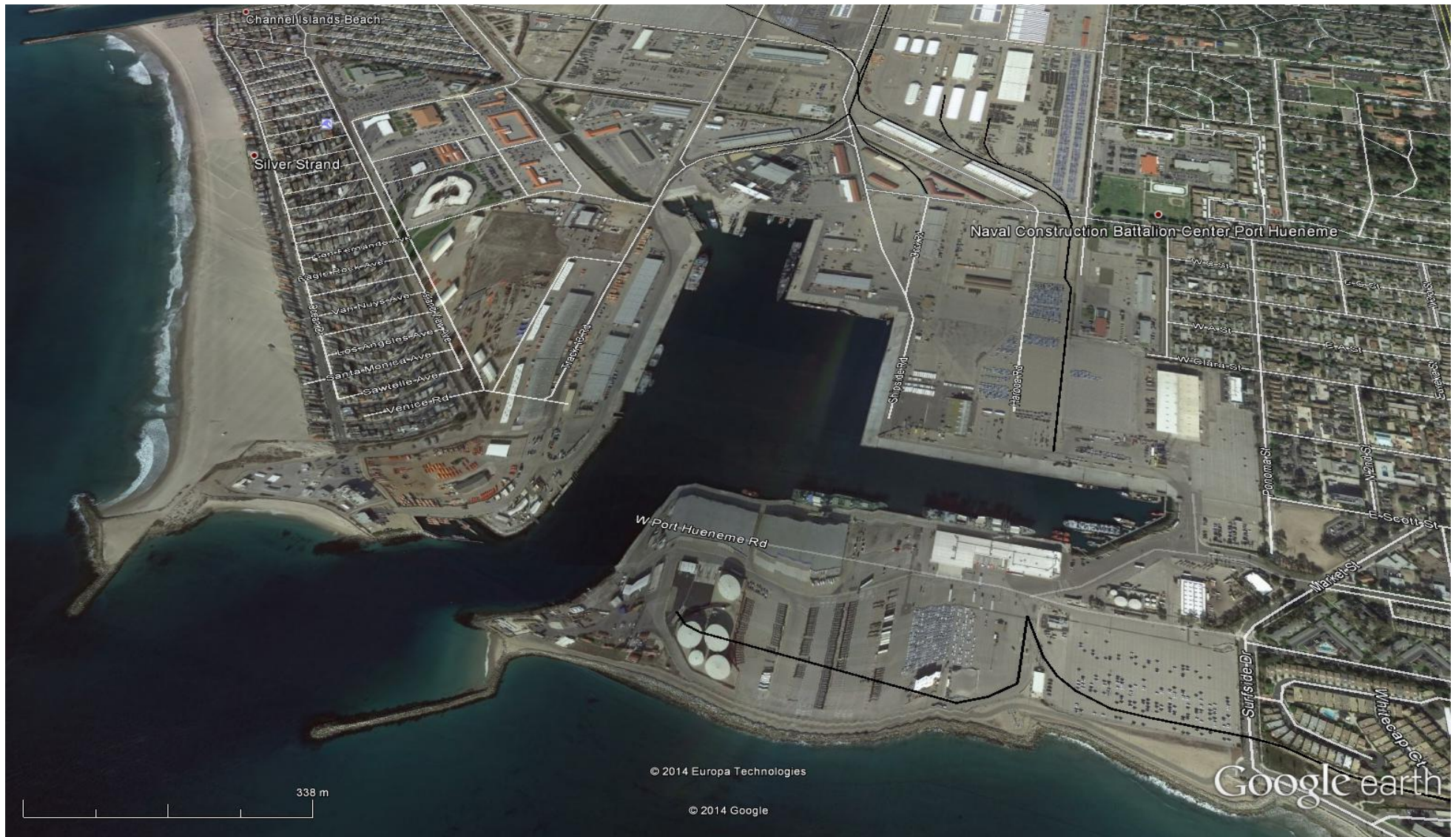
# Why California?



- Industrial Ports
  - Humboldt Bay
  - San Francisco / Oakland
  - Port Hueneme
  - Los Angeles / Long Beach
  - San Diego

# Why California?

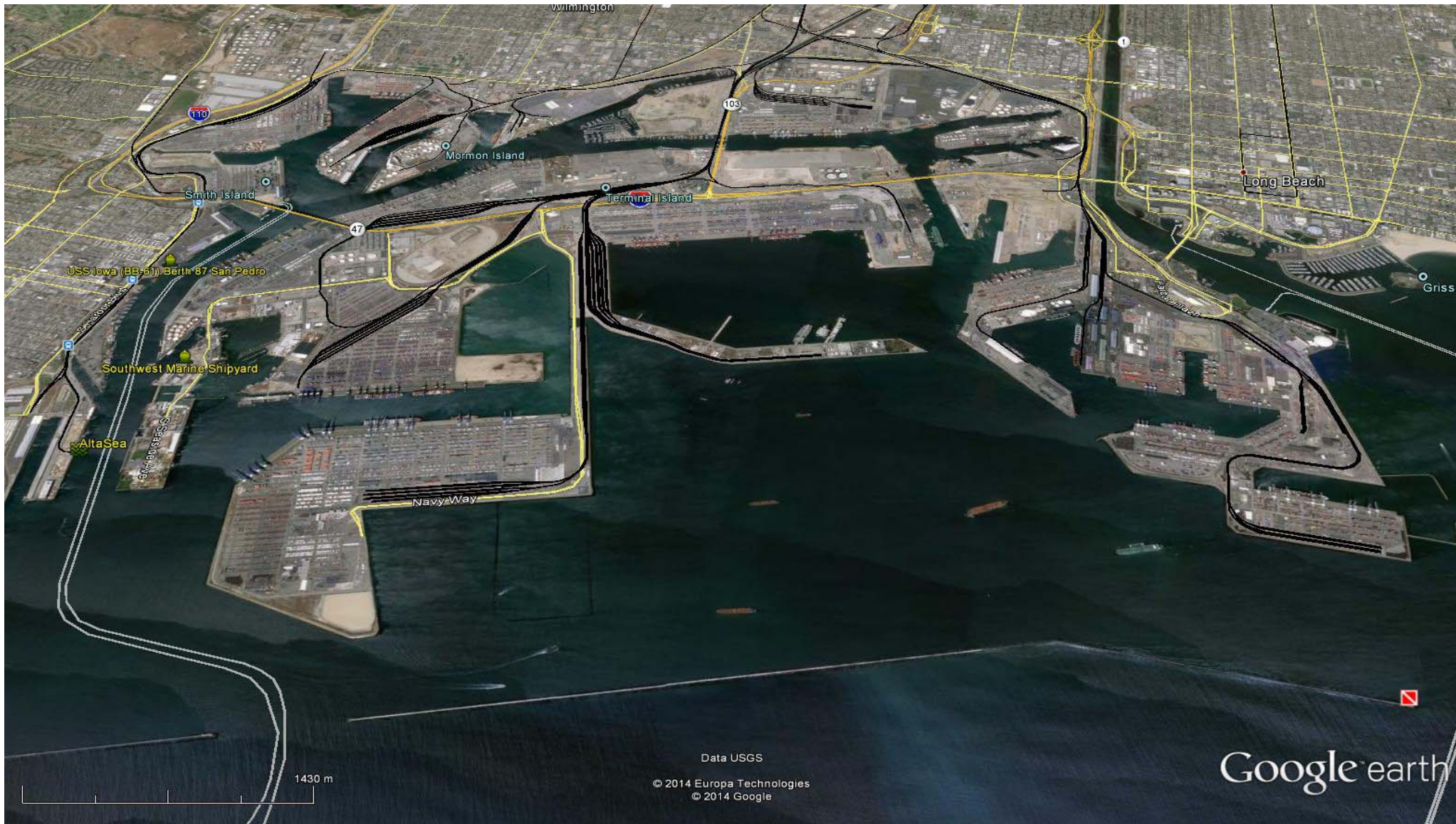
- Industrial Ports: Port Hueneme





# Why California?

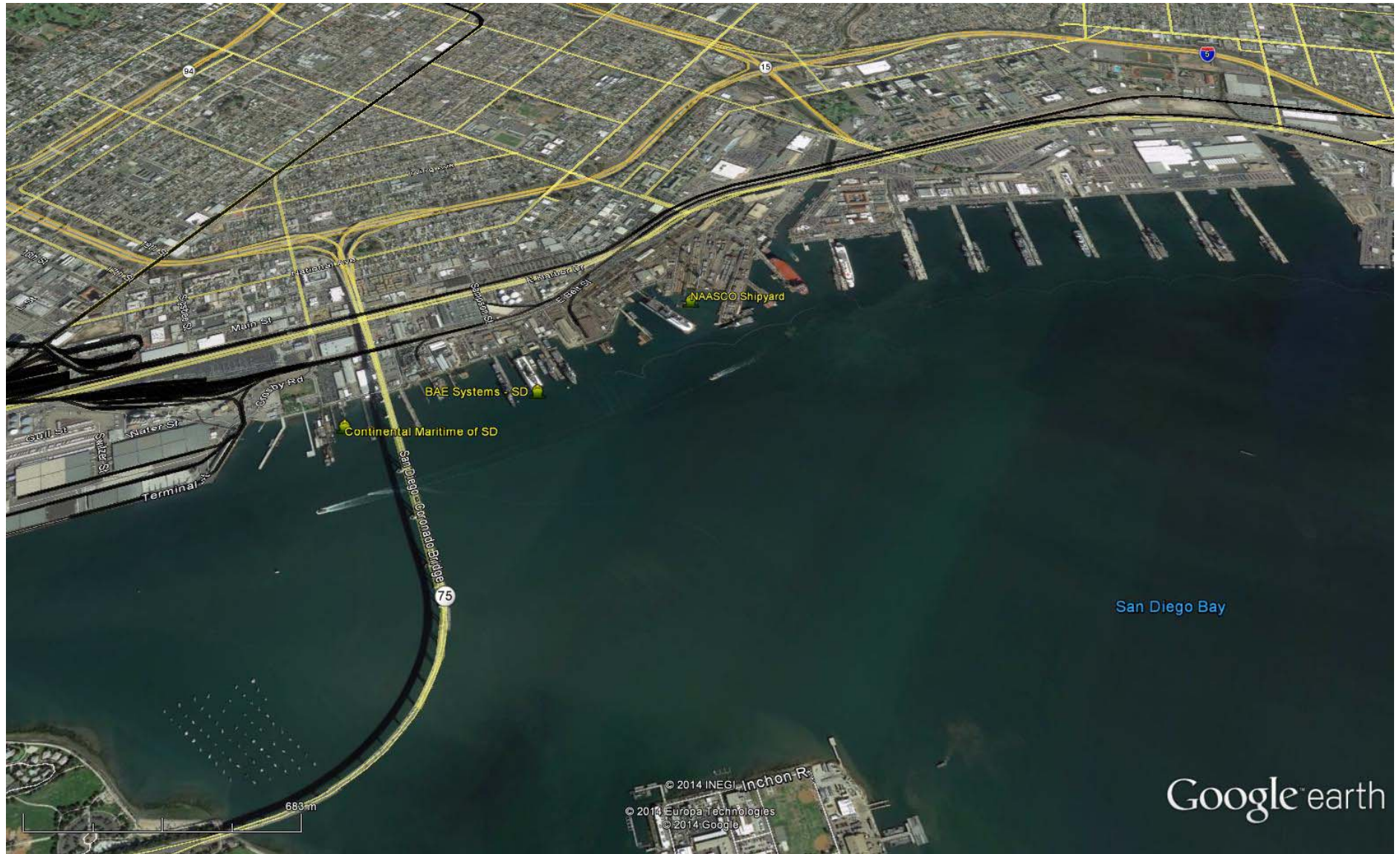
- Industrial Ports: Port of Los Angeles / Long Beach





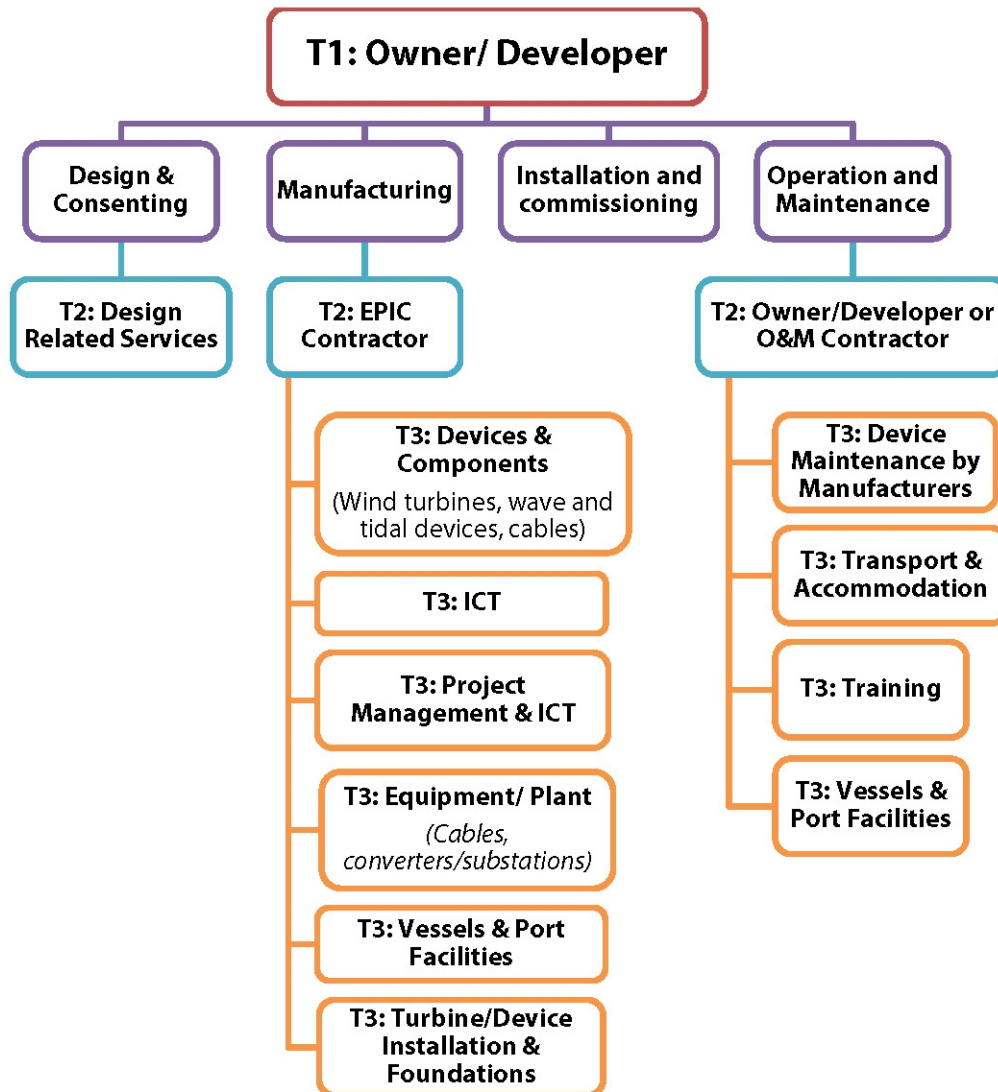
# Why California?

- Industrial Ports: Port of San Diego



# Why California?

## The Offshore WW&T Energy Supply Chain



- Established full capability marine industrial supply chain

Source: A Study of the Supply Chain Requirements and Irish Company Capability in the Offshore Wind, Wave and Tidal Energy Sector, Sustainable Energy Authority of Ireland, 2012



# Why California?

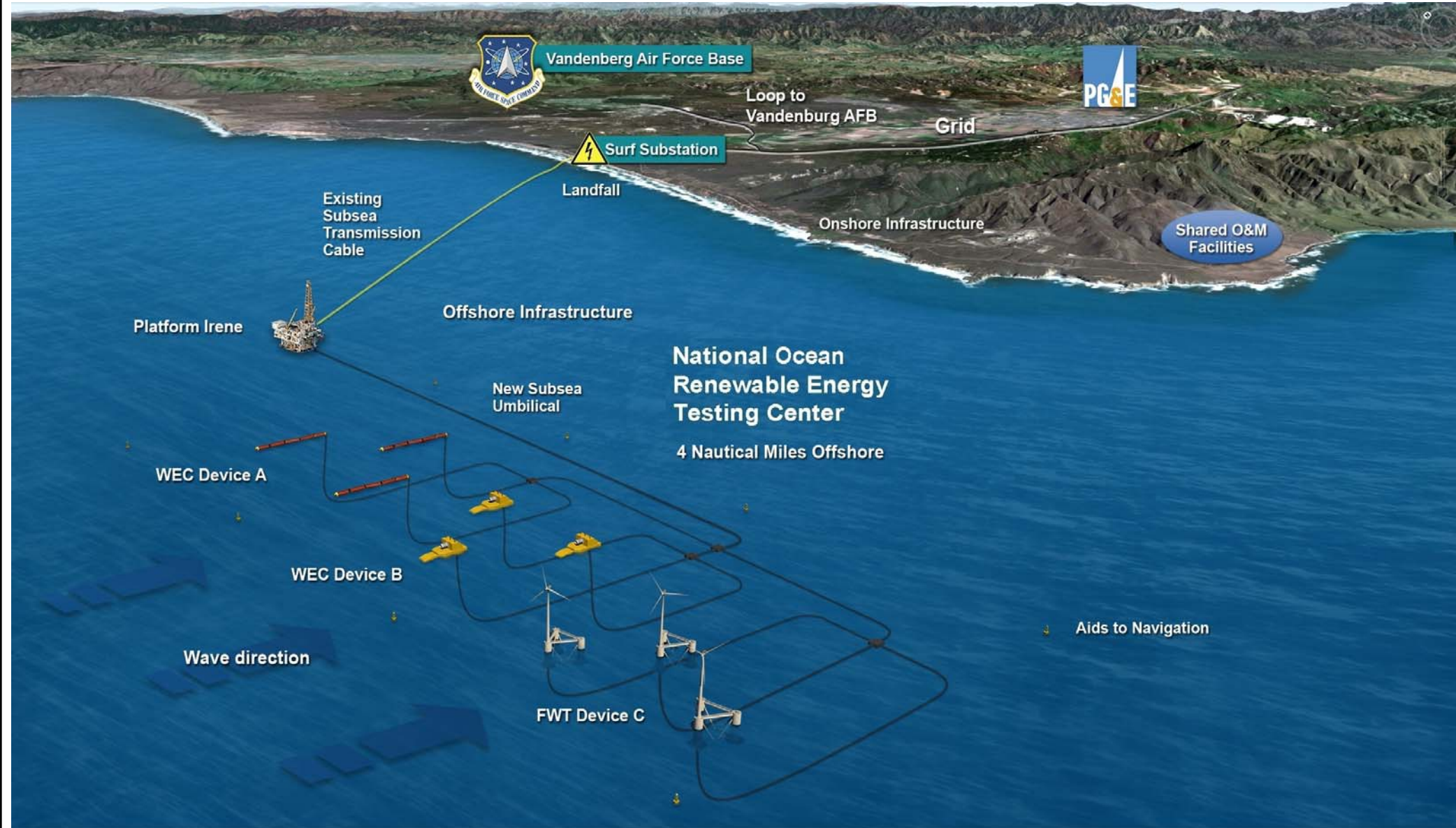


- Existing Offshore Oil Platform Service and Maintenance Fleet
- Operating from Port Hueneme and Port of Los Angeles / Long Beach

## CalWave Study

- Awarded \$750,000 grant by U.S. Department of Energy to Study Siting and Cost of National Wave Energy Testing Center
- Cal Poly, San Luis Obispo Leads Team drawn from Universities, National Labs and Industry
- Will Examine Sites Offshore of Humboldt Bay and Vandenberg Air Force Base





**Contact Info:**

**Dr. Sam Blakeslee**

**Director, Institute for Advanced Technology and Public Policy  
Cal Poly, San Luis Obispo**

**(805) 756-1694**

**Dr. Sam Blakeslee ([sblakesl@calpoly.edu](mailto:sblakesl@calpoly.edu))**

**William Toman**

**CalWave Project Manager  
Institute for Advanced Technology and Public Policy  
Cal Poly, San Luis Obispo**

**707-731-9261**

**William Toman ([wtoman@calpoly.edu](mailto:wtoman@calpoly.edu))**