



# Overview of Offshore Atlantic Ocean Study



Mike Snyder  
September 26, 2013

# DOS's Offshore Planning Summary

- Purpose:
  - Site offshore wind to meet energy needs, promote economic development
  - Protect areas important to New York's industries
- Products:
  - Offshore Atlantic Ocean Study
  - Maps showing potentially suitable offshore wind lease areas (Wind Energy Area(s) or WEAs)
  - Ocean-focused amendment (Routine Program Change) to the New York Coastal Management Program

# Acknowledgements

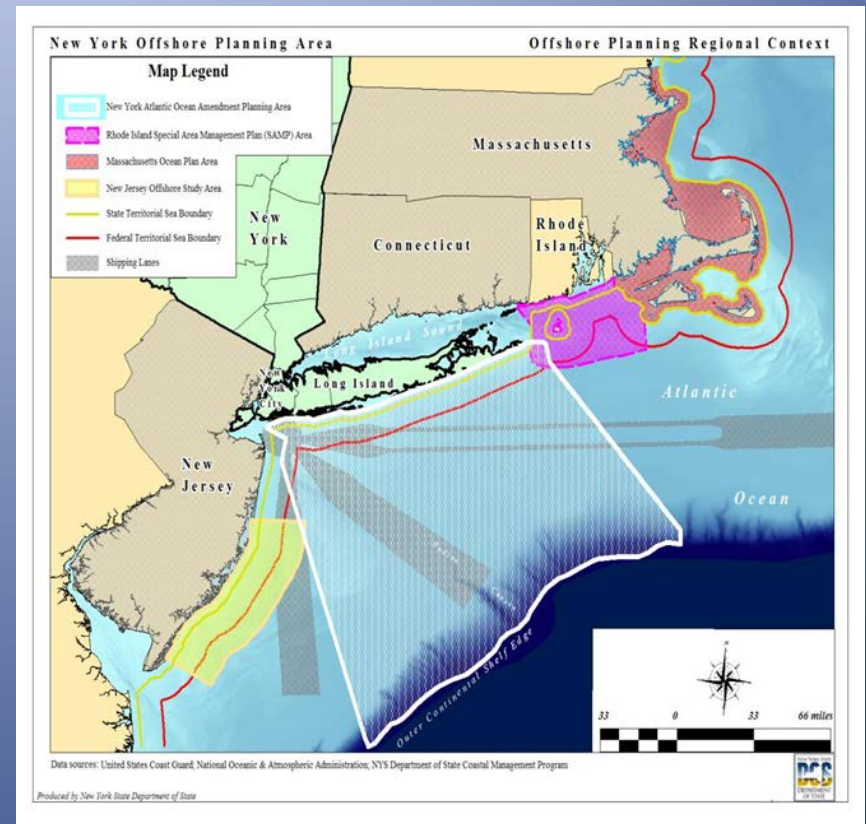
- Stakeholders: fishermen, navigation interests, recreational groups, tribal representatives, many others
- Federal partners: NOAA (NCCOS, CSC, NMFS), BOEM, Coast Guard
- State partners: Habitat and Energy Workgroups
- Cornell Cooperative Extension, New England Aquarium, North Atlantic Right Whale Consortium, Stone Environmental
- And others!

# Offshore Atlantic Ocean Study

- **Focus is on data, not analysis**
  - The data component of the Habitat and Offshore Renewable Energy Work Group work efforts
  - Initial work group products provided as examples of how data are used
- Identifies areas/habitats important to New York industries
- Makes the case for increasing State involvement in federal activities offshore
- Provides a launch point for the ongoing work of the workgroups, identification of wind energy area

# Offshore Atlantic Ocean Study: Scope

- Geographic area
  - 1500 feet from shore to the shelf edge, with focus on 3 miles and out
- Used the actual or predicted locations of existing uses and resources
  - Sparse existing information
  - New modeling techniques
  - Assumptions are important



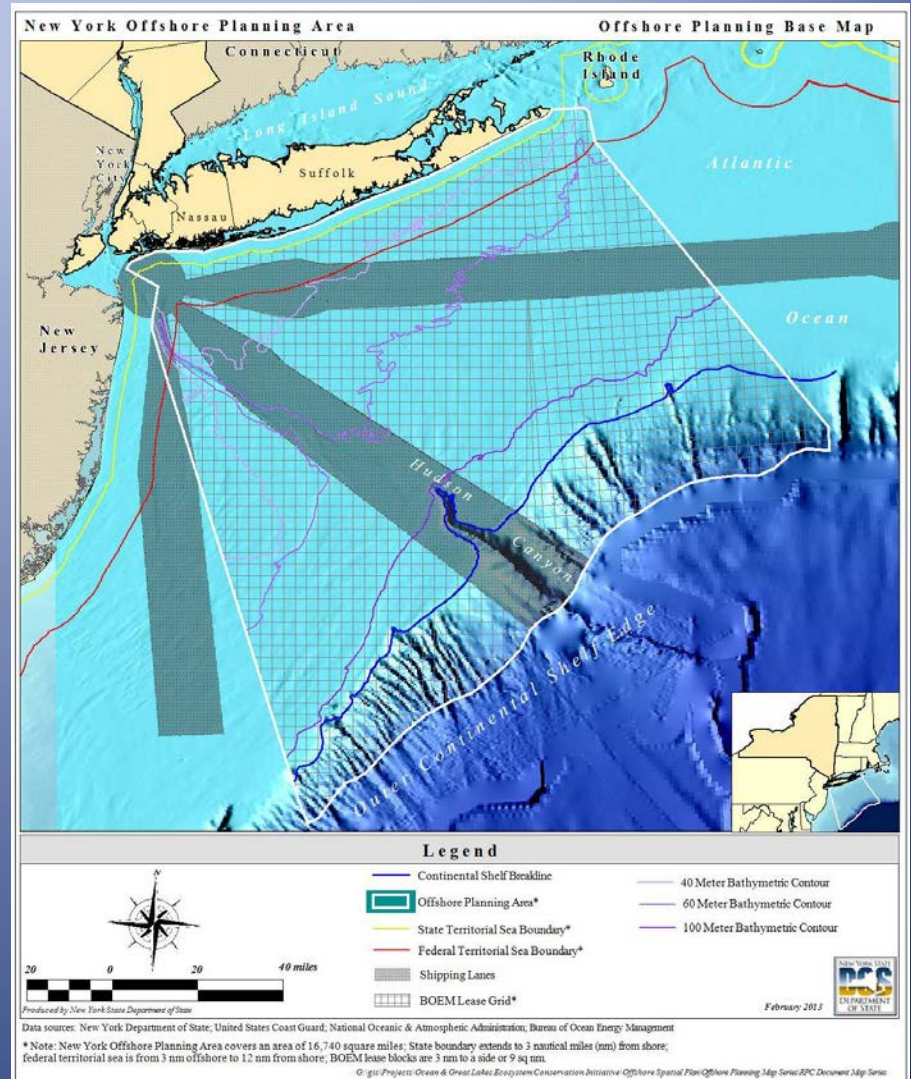


# Data Delivery

- Data shared in two formats
  - *Static* study and supporting reports with maps showing offshore habitats / ocean use areas
  - *Periodically updated* data layers to be made publically available on NY Ocean/Great Lakes Atlas
- Four foundational reports (also static)
  - NOAA National Centers for Coastal and Ocean Science (seabird, deep sea coral, oceanographic data)
  - New England Aquarium / University of Rhode Island (marine mammal, sea turtle data)
  - Cornell Cooperative Extension (interviews with commercial fishermen)
  - Stone Environmental (commercial fish data)

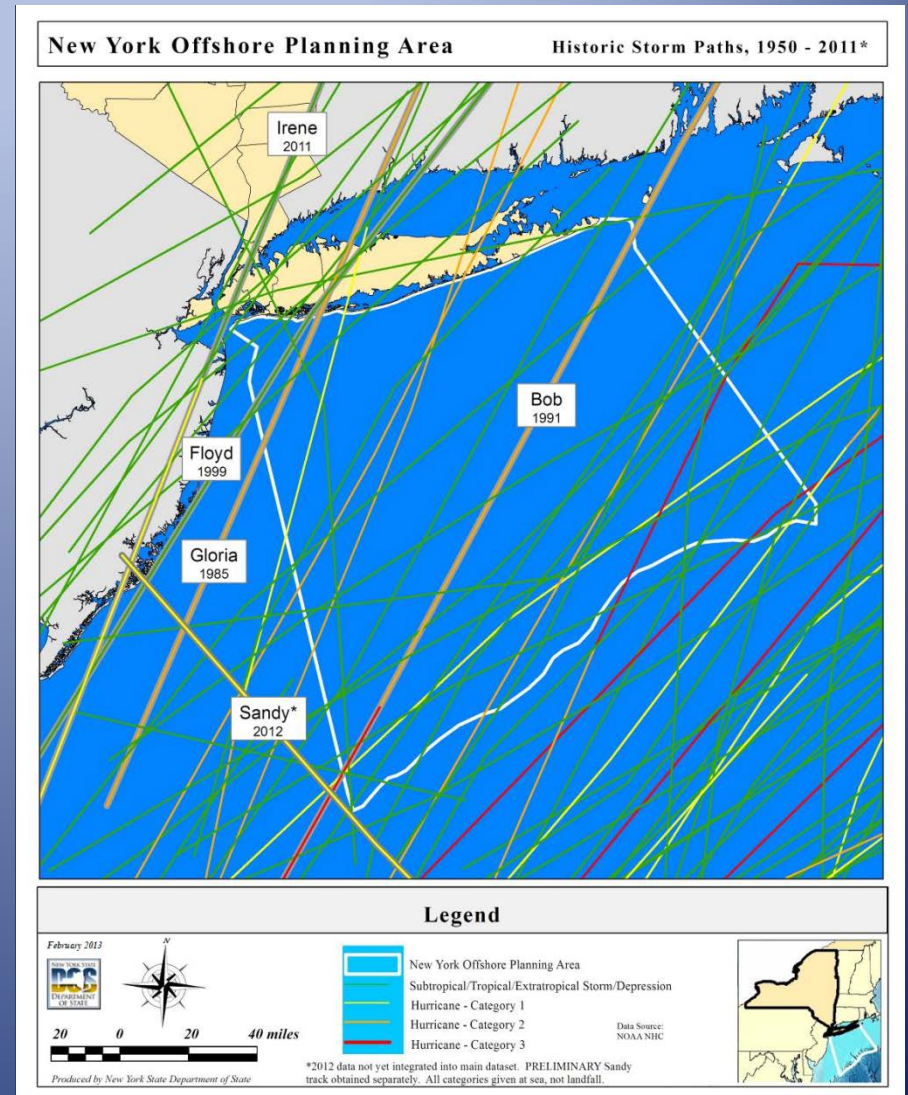
# Key Study Elements

- **Base map/layers**
  - States/coastline
  - New York counties
  - Bathymetry
  - Navigation lanes
  - Federal/state territorial seas (red/yellow)
  - OCS Lands Act lease grid



# Key Study Elements

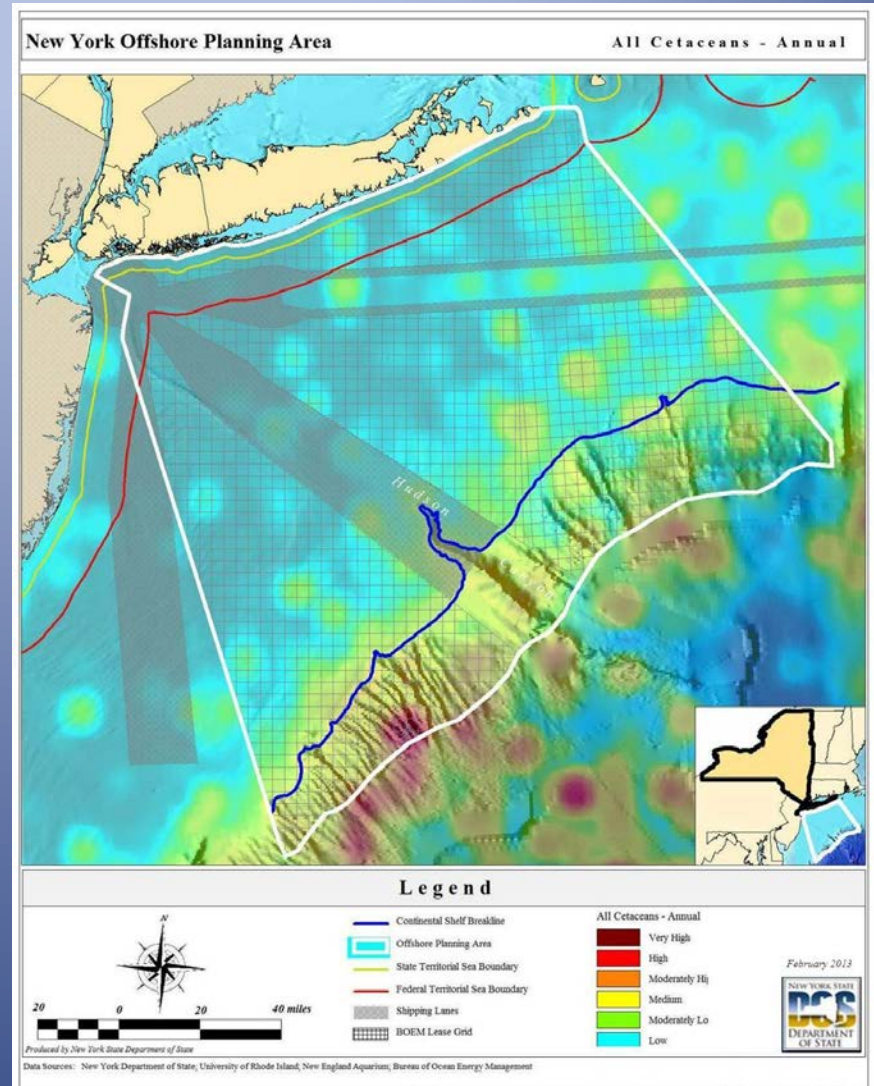
- Base map/layers
- *Oceanographic data*
  - *Wind energy data*
  - *Severe storm tracks*
  - *Temperature, turbidity, productivity, etc*





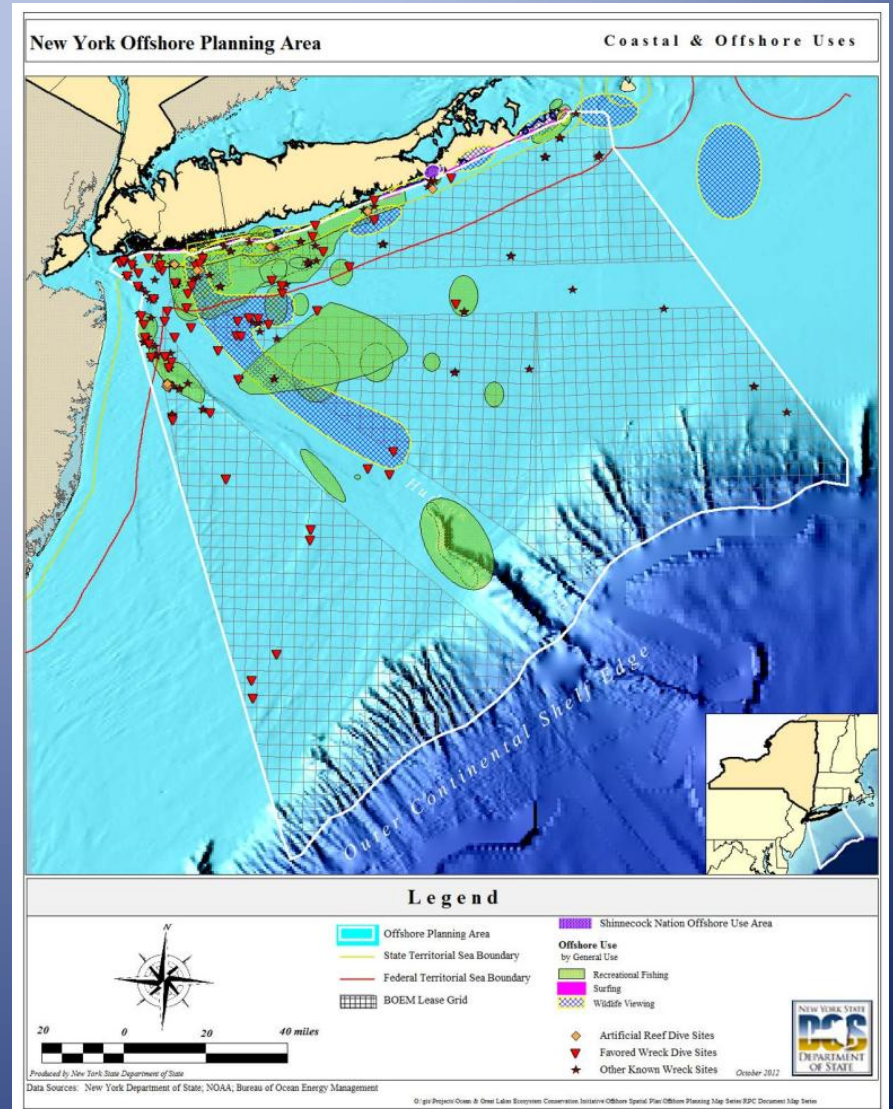
# Key Study Elements

- Base map/layers
- Oceanographic data
- **Existing biological data**
  - *Deep sea corals & sponges*
  - *Seabirds*
  - *Marine mammals*
  - *Sea turtles*
  - *Fish (NMFS trawl data)*



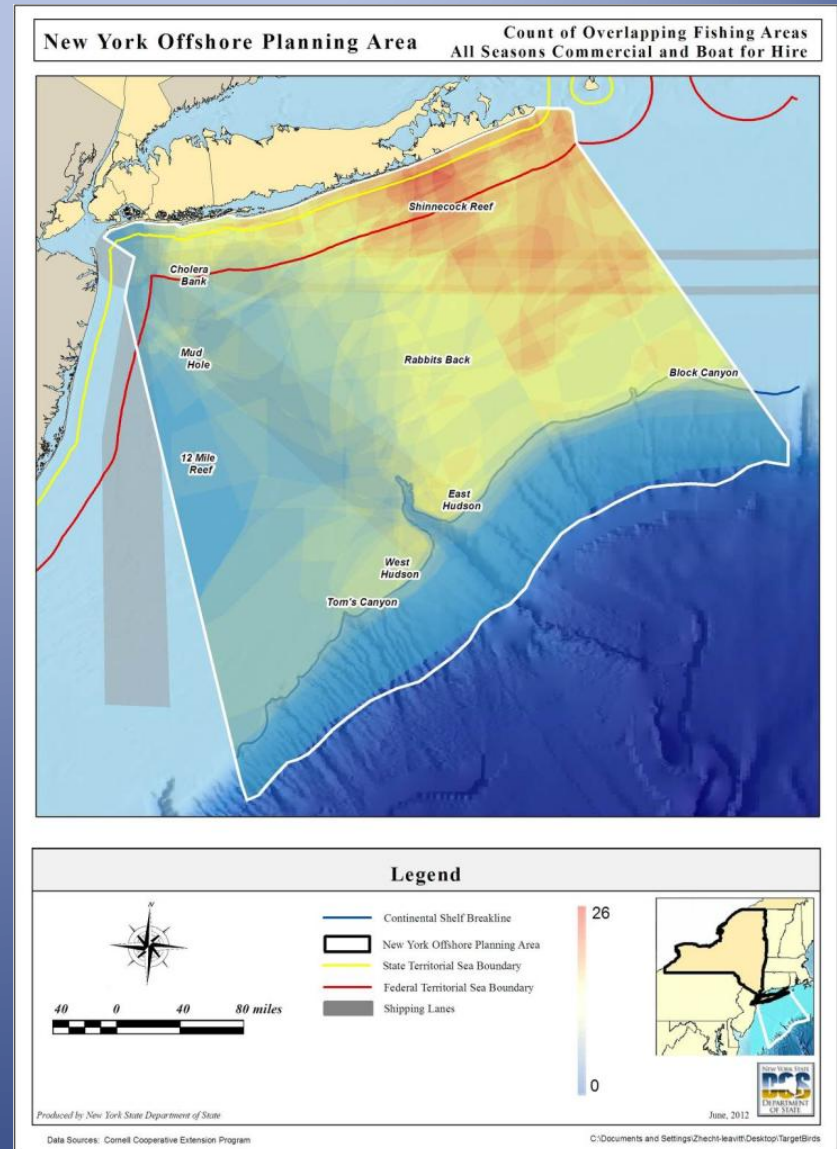
# Key Study Elements

- Base map/layers
- Oceanographic data
- Existing biological data
- **Use data**
  - *Ocean use workshops*



# Key Study Elements

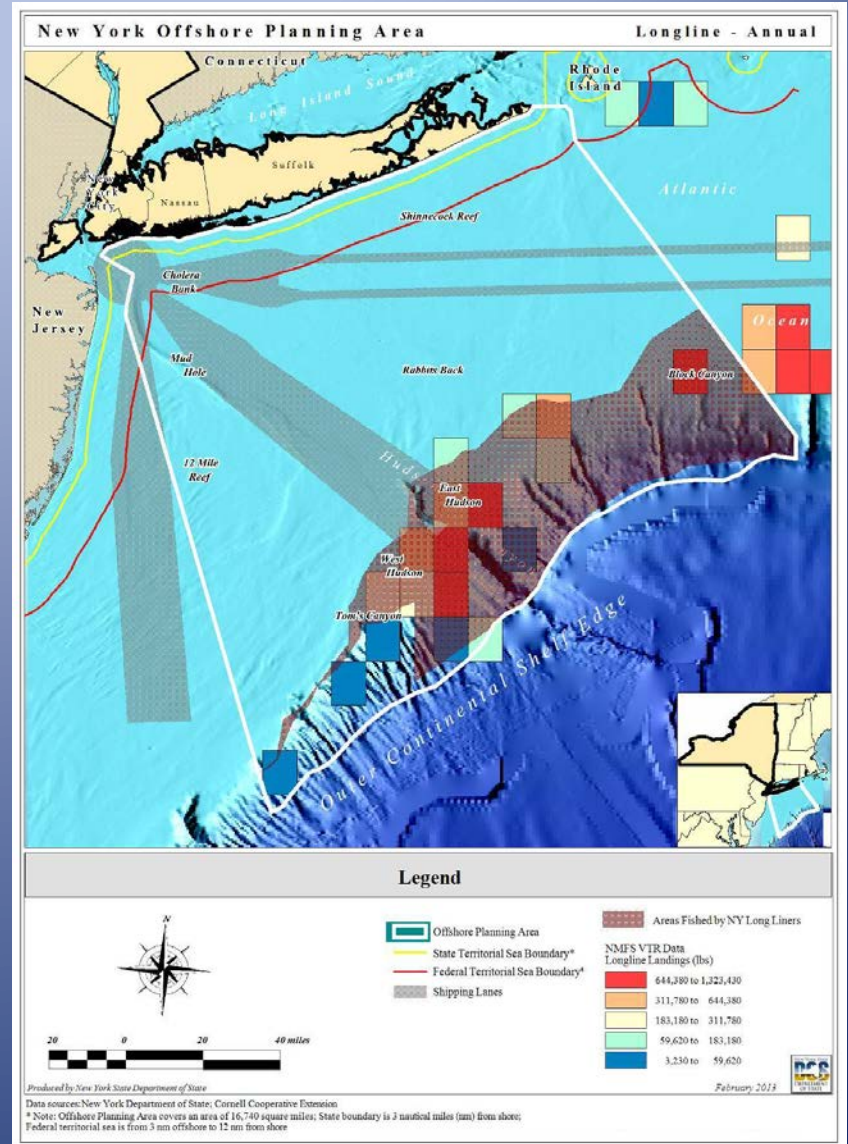
- Base map/layers
- Oceanographic data
- Existing biological data
- **Use data**
  - Ocean use workshops
  - **Fishermen data from Cornell workshops**





# Key Study Elements

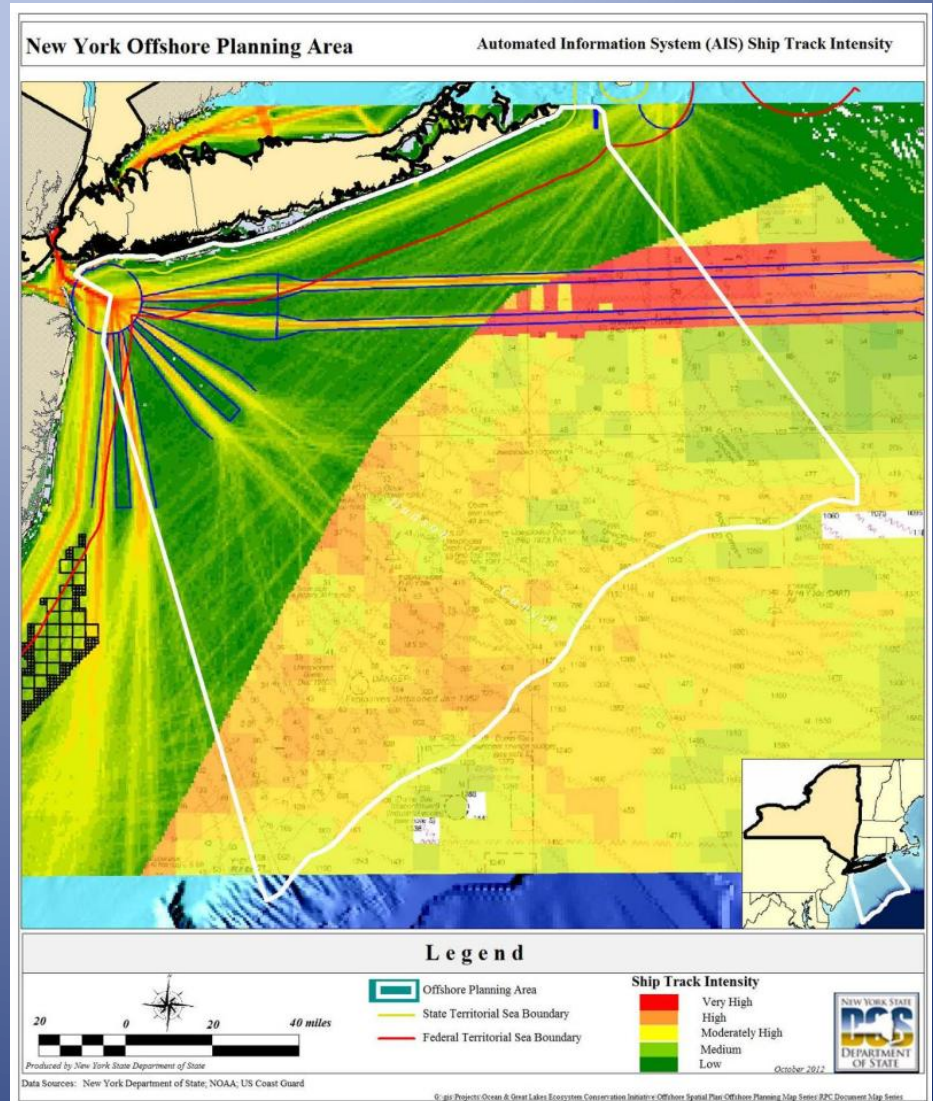
- Base map/layers
- Oceanographic data
- Existing biological data
- **Use data**
  - Ocean use workshops
  - Fishermen data from Cornell workshops
  - **NOAA fishing data**





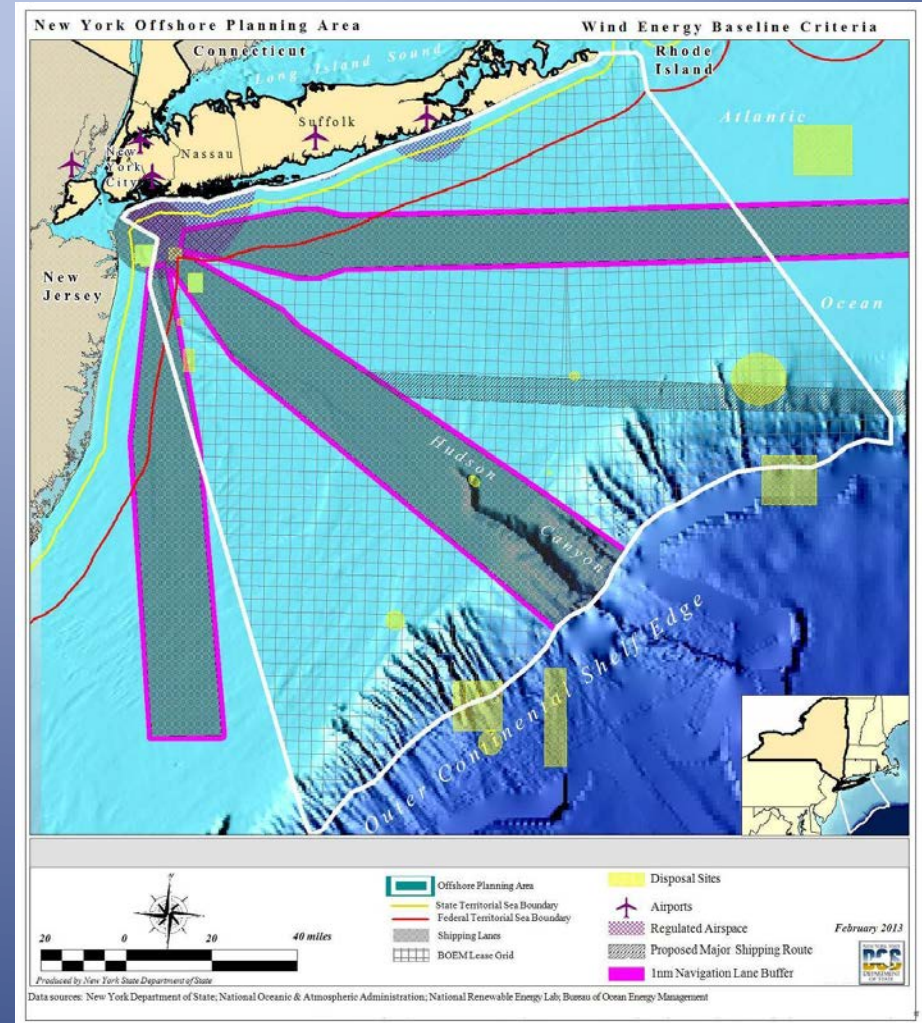
# Key Study Elements

- Base map/layers
- Oceanographic data
- Existing biological data
- **Use data**
  - Ocean use workshops
  - Fishermen data from Cornell workshops
  - NOAA fishing data
  - **Coast Guard AIS data**



# Key Study Elements

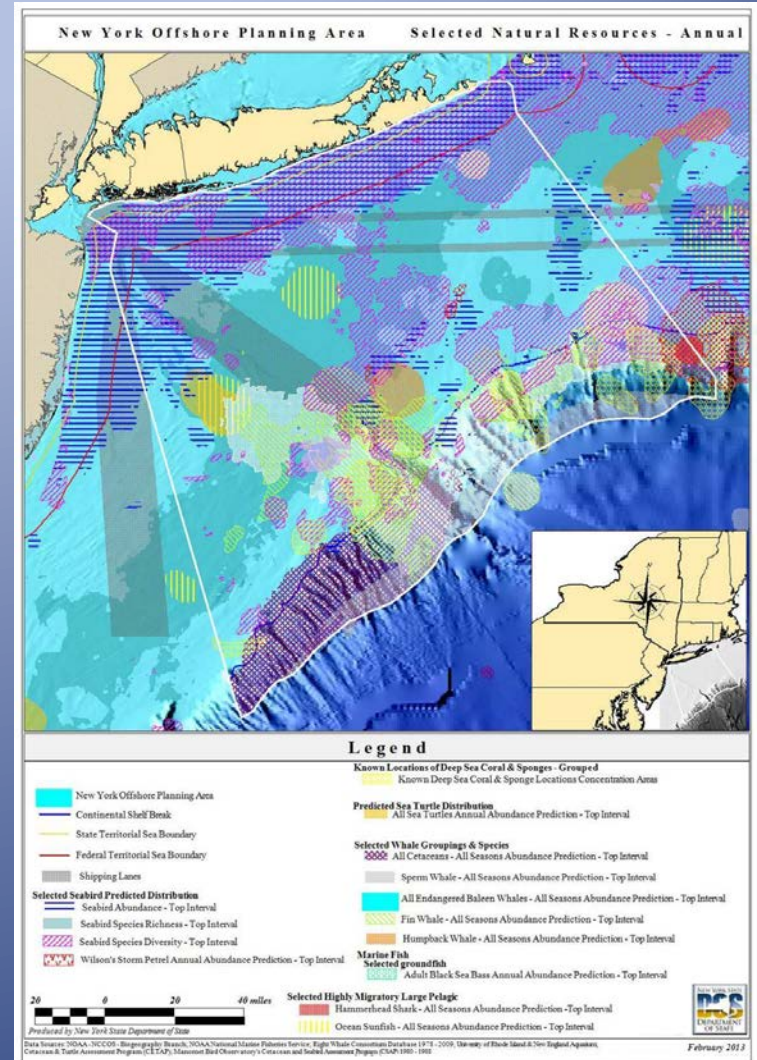
- Base map/layers
- Oceanographic Data
- Existing Biological Data
- Use Data
- **Data Overlays**
  - *Wind energy baseline criteria*





# Key Study Elements

- Base map/layers
- Oceanographic Data
- Existing Biological Data
- Use Data
- **Data Overlays**
  - Wind energy baseline criteria
  - **Natural resources**



# Questions?

