

# Who Fishes There?

A brief baseline of landings in NJ - NY - CT region

plus NY-specific data

A. Justin Kirkpatrick

Sharon Benjamin

April 2014

*This study was funded in part by the U.S. Department of the Interior, Bureau of Ocean Energy Management Environmental Studies Program through Interagency Agreement M12PG0028 with the U.S. Department of Commerce, National Oceanic and Atmospheric Administration*

**NOAA  
FISHERIES  
SERVICE**

NOAA

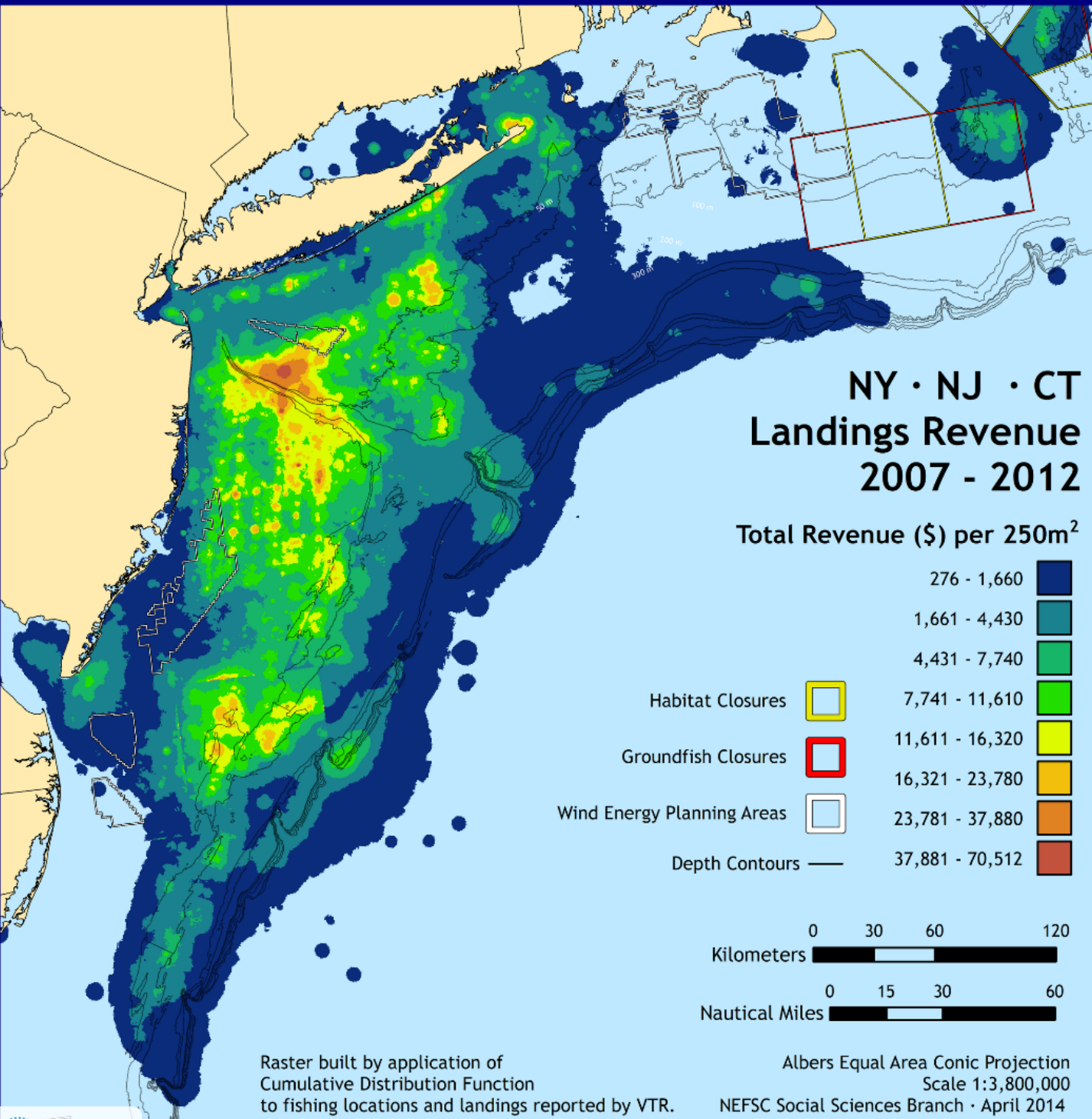
# Notes:

- Maps and data are *preliminary*
- "Exposed" revenue = revenue that data shows is most likely sourced from inside a proposed wind energy area
- Exposure is *not* an economic loss.



# Results

## Wind Energy Areas (WEAs)



**NY - NJ - CT:**  
1,542 permits  
\$215m / year

\$2.0m - NY WEA  
\$3.5m - NJ WEA  
(per year)

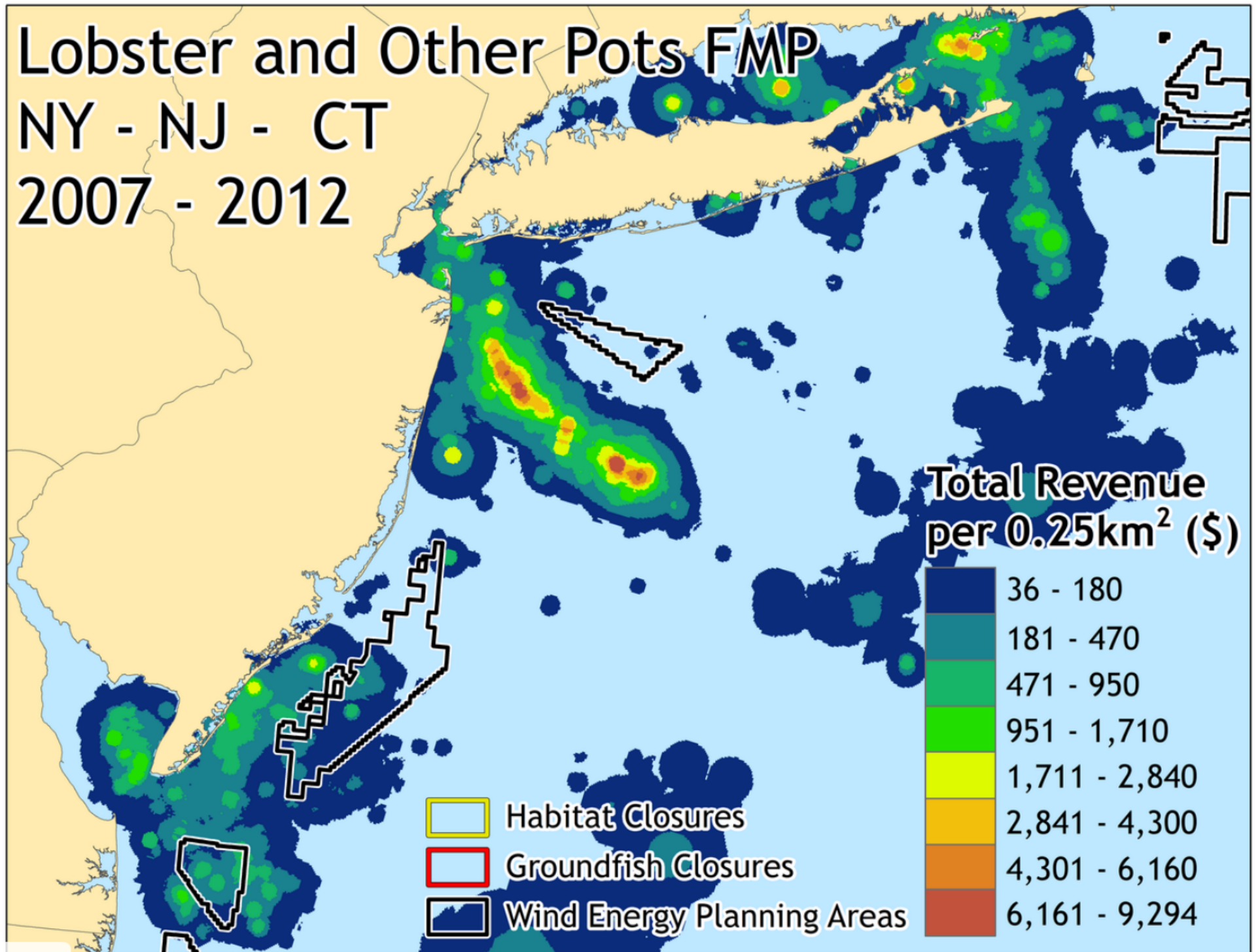
**NY Only:**  
752 permits  
\$34m / year

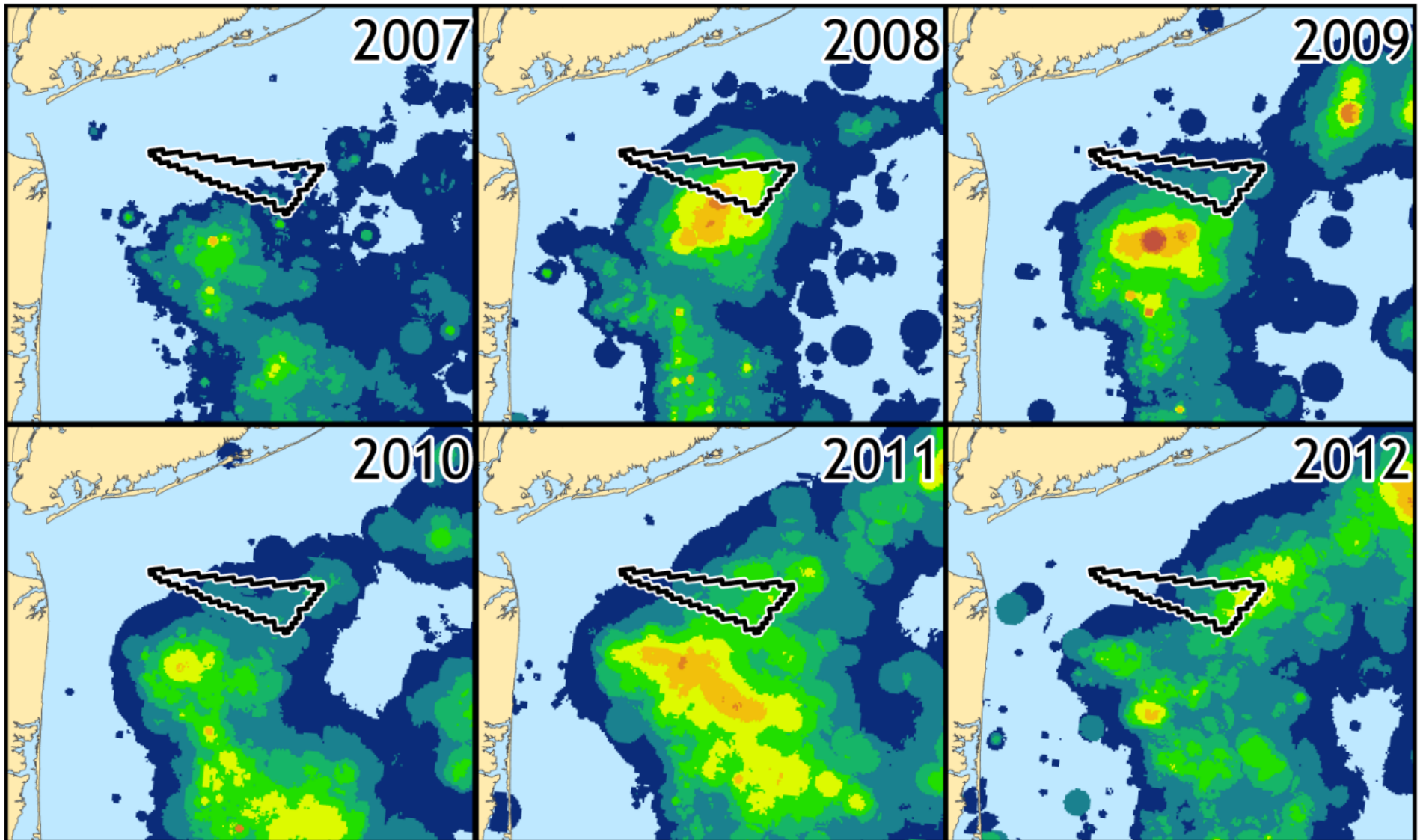
\$550k - NY WEA  
\$250k - MA WEA  
\$1k - NJ WEA

# Lobster and Other Pots FMP

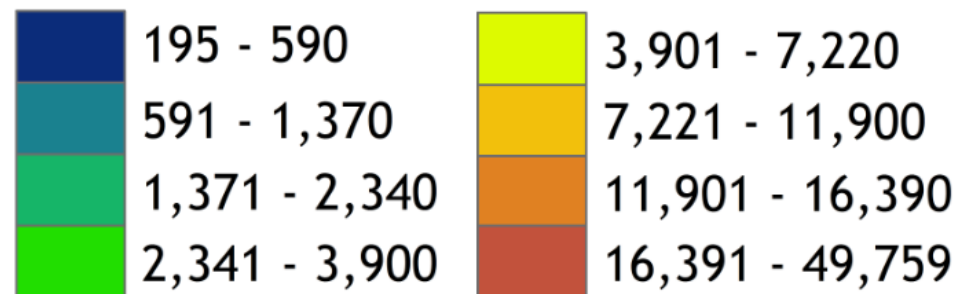
NY - NJ - CT

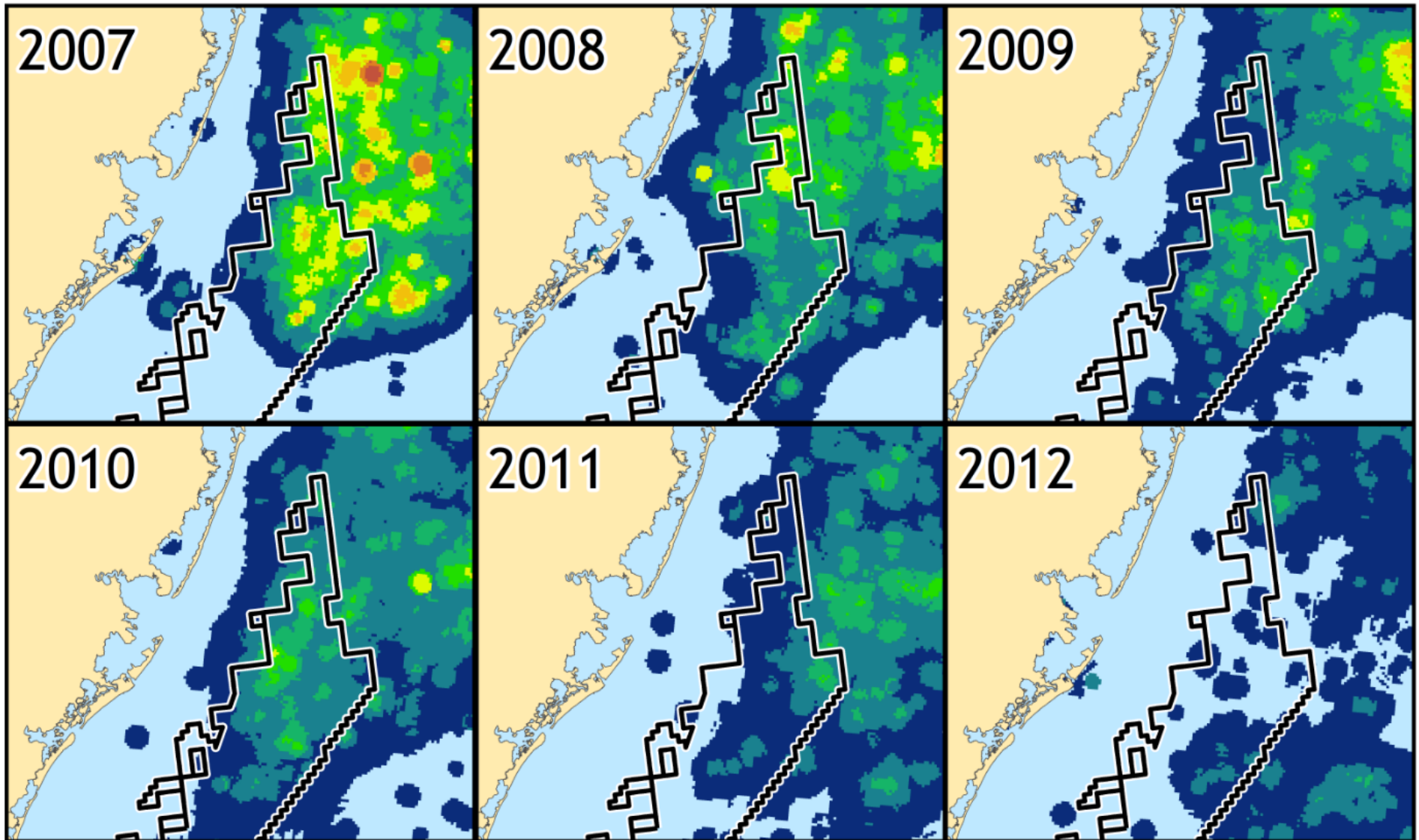
2007 - 2012



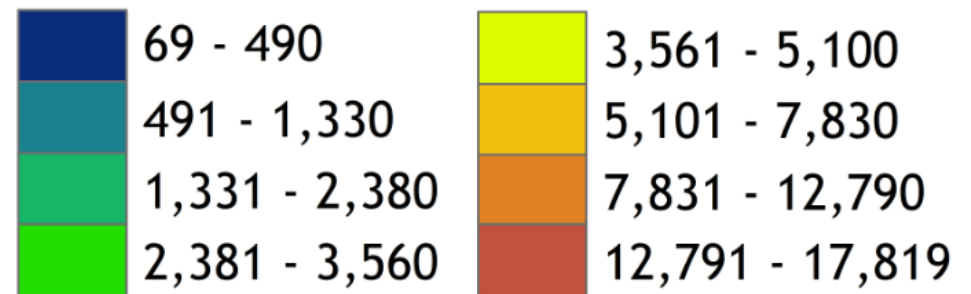


**NY - NJ - CT  
Scallop Revenue (\$)   
per 250m<sup>2</sup>**

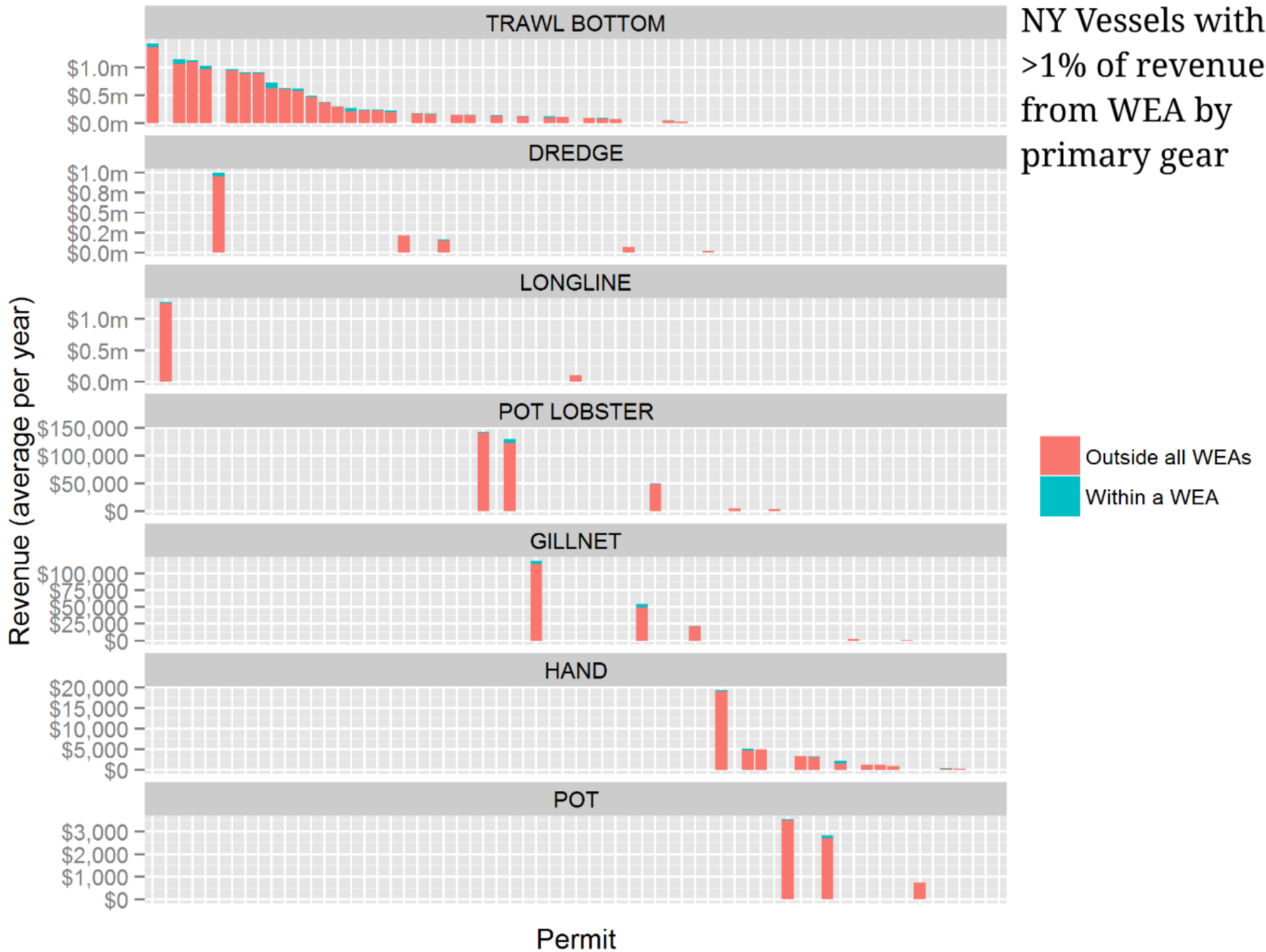




**NY - NJ - CT**  
**Surf Clam & Ocean Quahog**  
**Total Revenue (\$) per 250m<sup>2</sup>**



NY Vessels with >1% of revenue from WEA by primary gear



Outside all WEAs  
Within a WEA

Permit



# Thank you!

## Questions? Comments?

aubrey.kirkpatrick [at] noaa.gov  
sharon.benjamin [at] noaa.gov  
508-495-2080

We will be around this evening and welcome any discussion, comments, or concerns you may have.