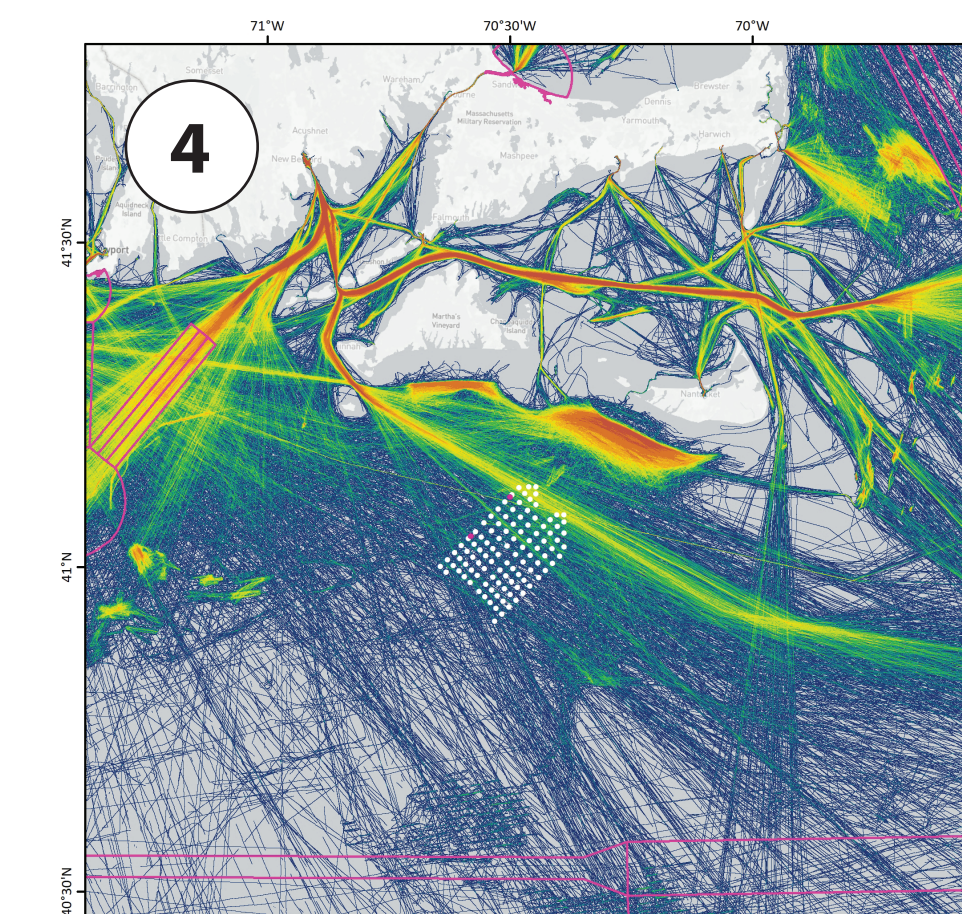
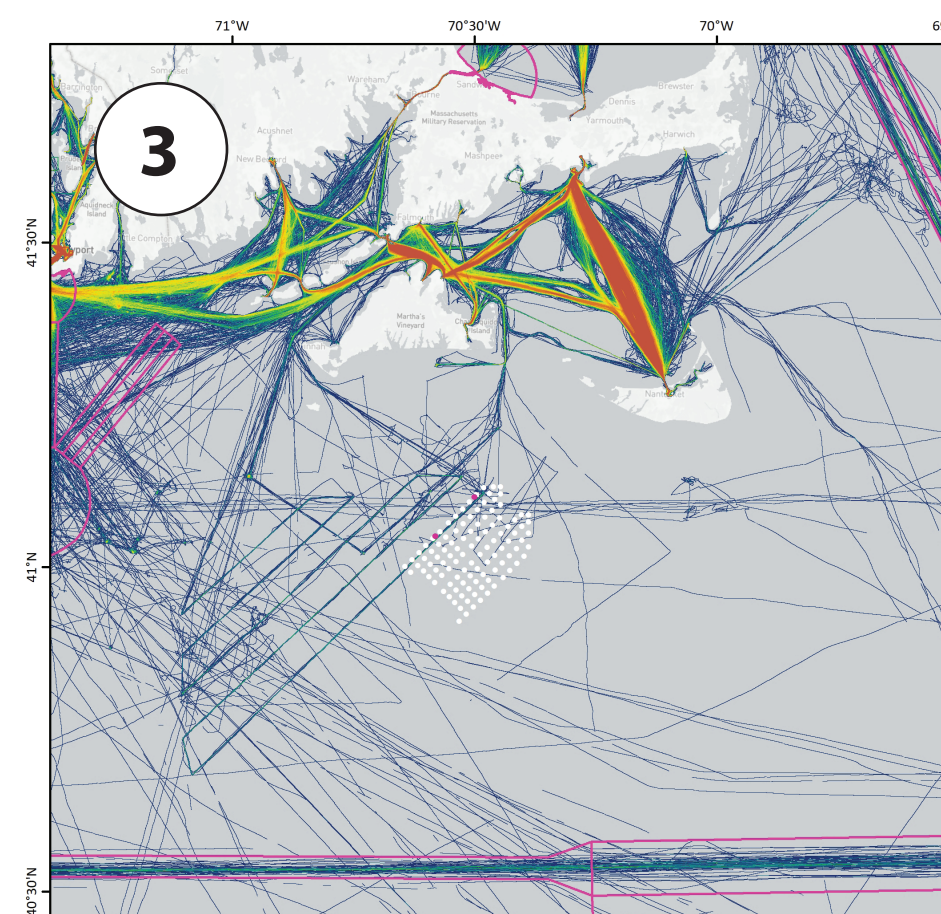
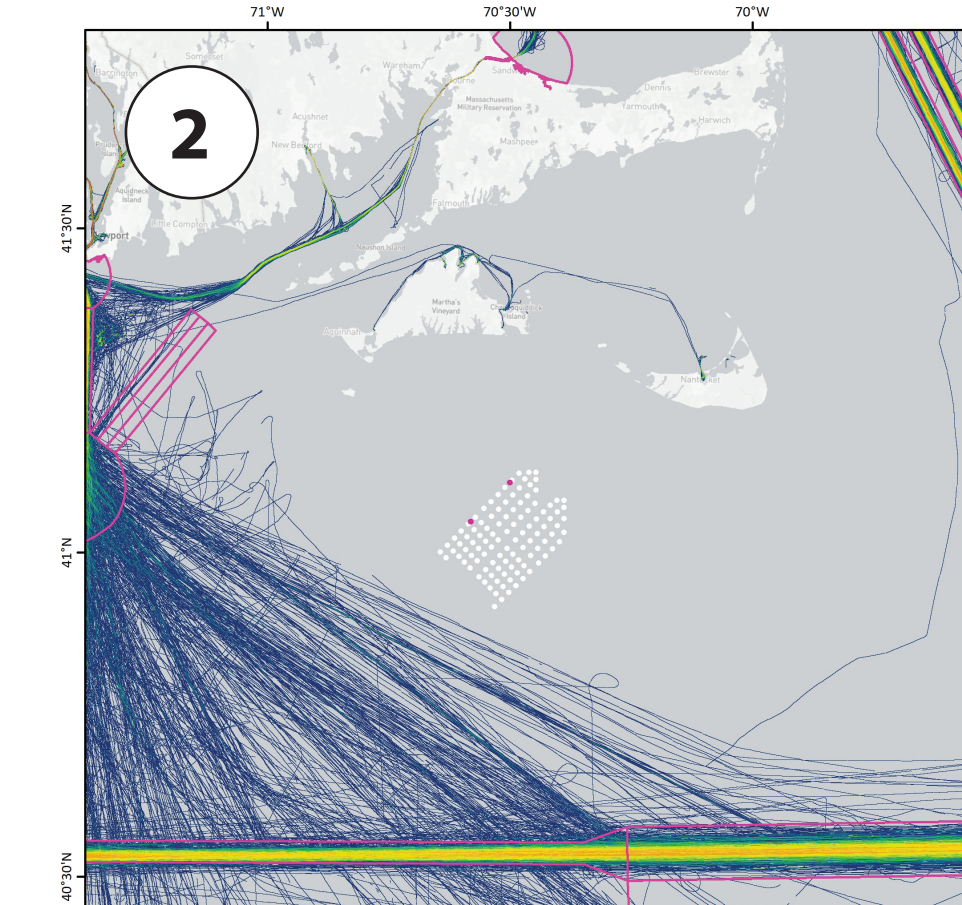
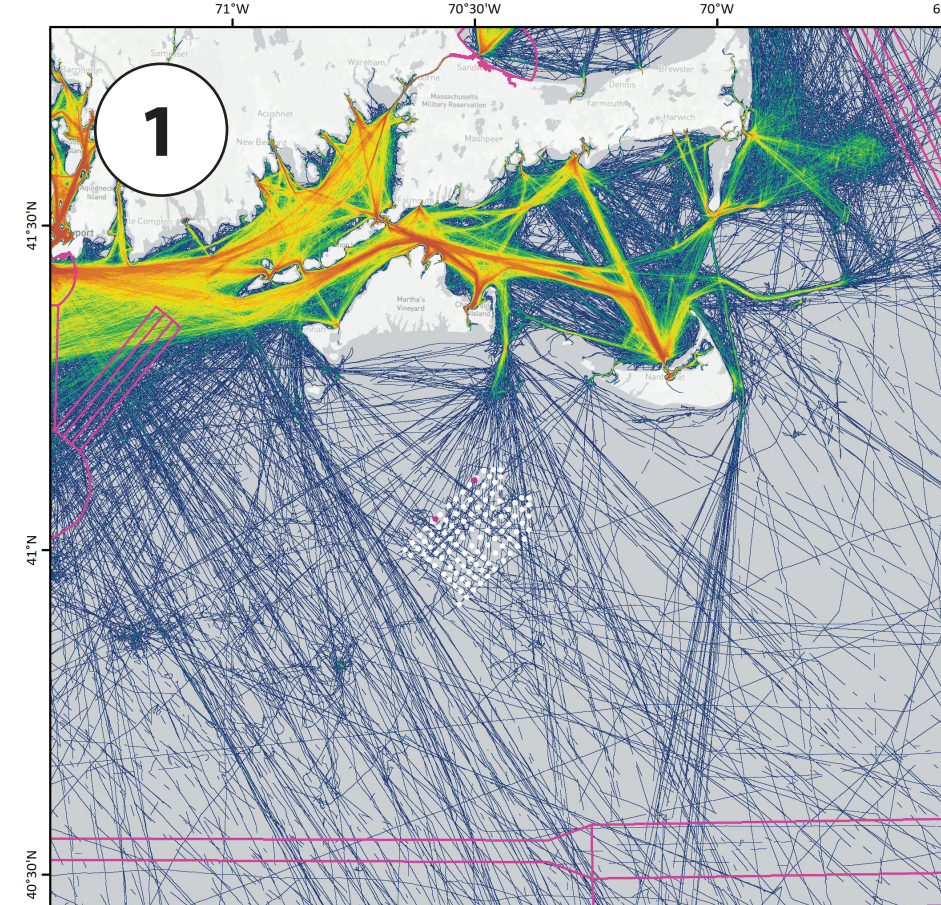
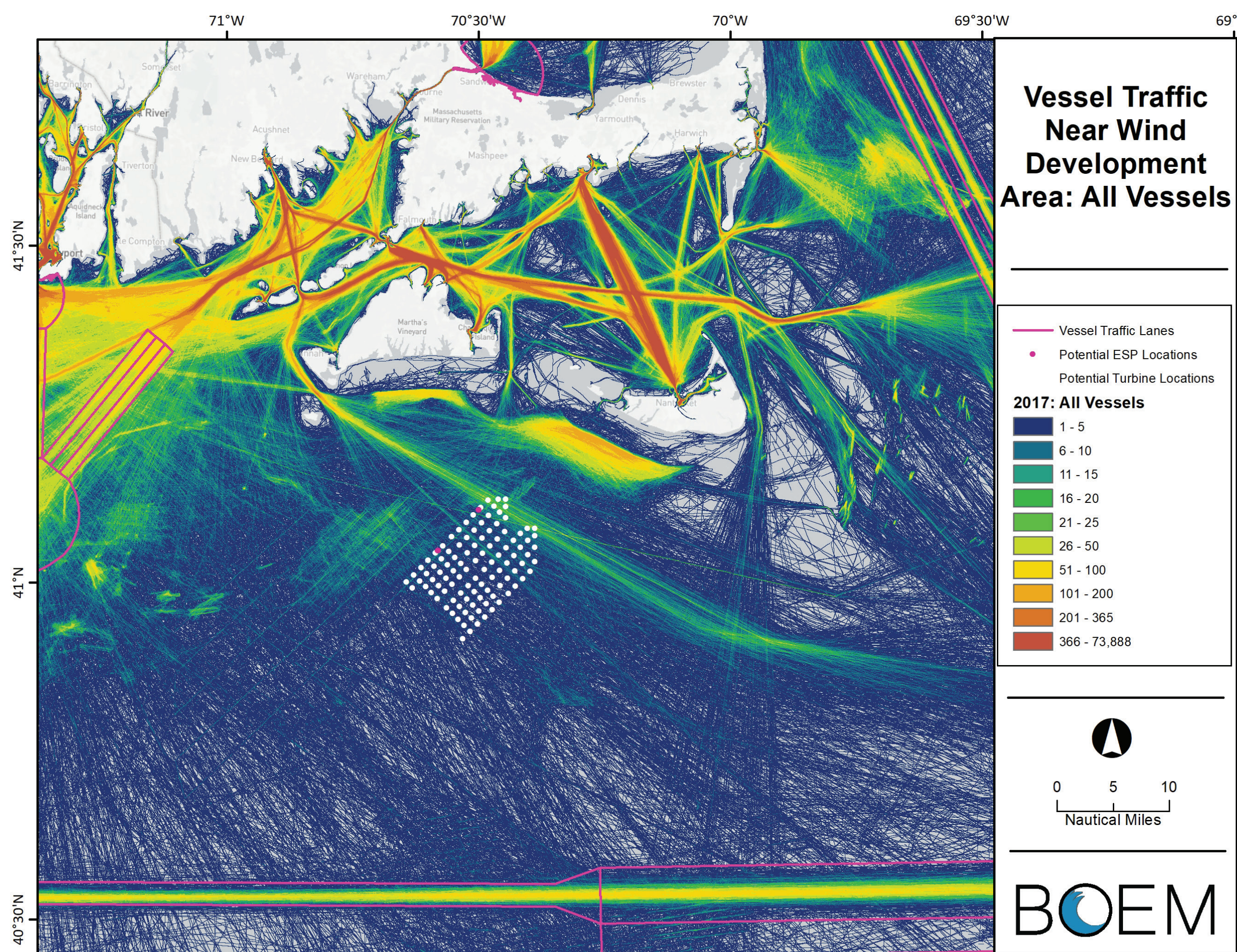
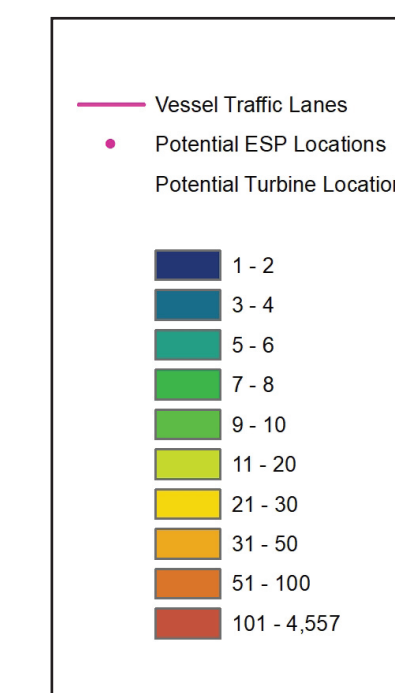


Navigation and Vessel Traffic near the Wind Development Area



- 1 Pleasure and Sailing
- 2 Deep Draft Vessels
- 3 Passenger
- 4 Fishing



Resource	Alternative:	A (PROPOSED ACTION)	B	C	D1	D2	E	F
Navigation and Vessel Traffic		MINOR to MODERATE short-term impacts from Project vessel traffic; MINOR to MODERATE long-term impacts from changes in navigation routes, delays in ports, and degraded communication and radar signals; potential temporary MAJOR impacts in Lewis Bay	MINOR to MODERATE short-term impacts from Project vessel traffic; MINOR to MODERATE long-term impacts from changes in navigation routes, delays in ports, and degraded communication and radar signals; no impact in Lewis Bay	Similar to the Proposed Action, potentially to a lesser degree	Similar to the Proposed Action, potentially to a lesser degree	Similar to the Proposed Action, potentially to a lesser degree	Similar to the Proposed Action, potentially to a lesser degree	NEGLIGIBLE