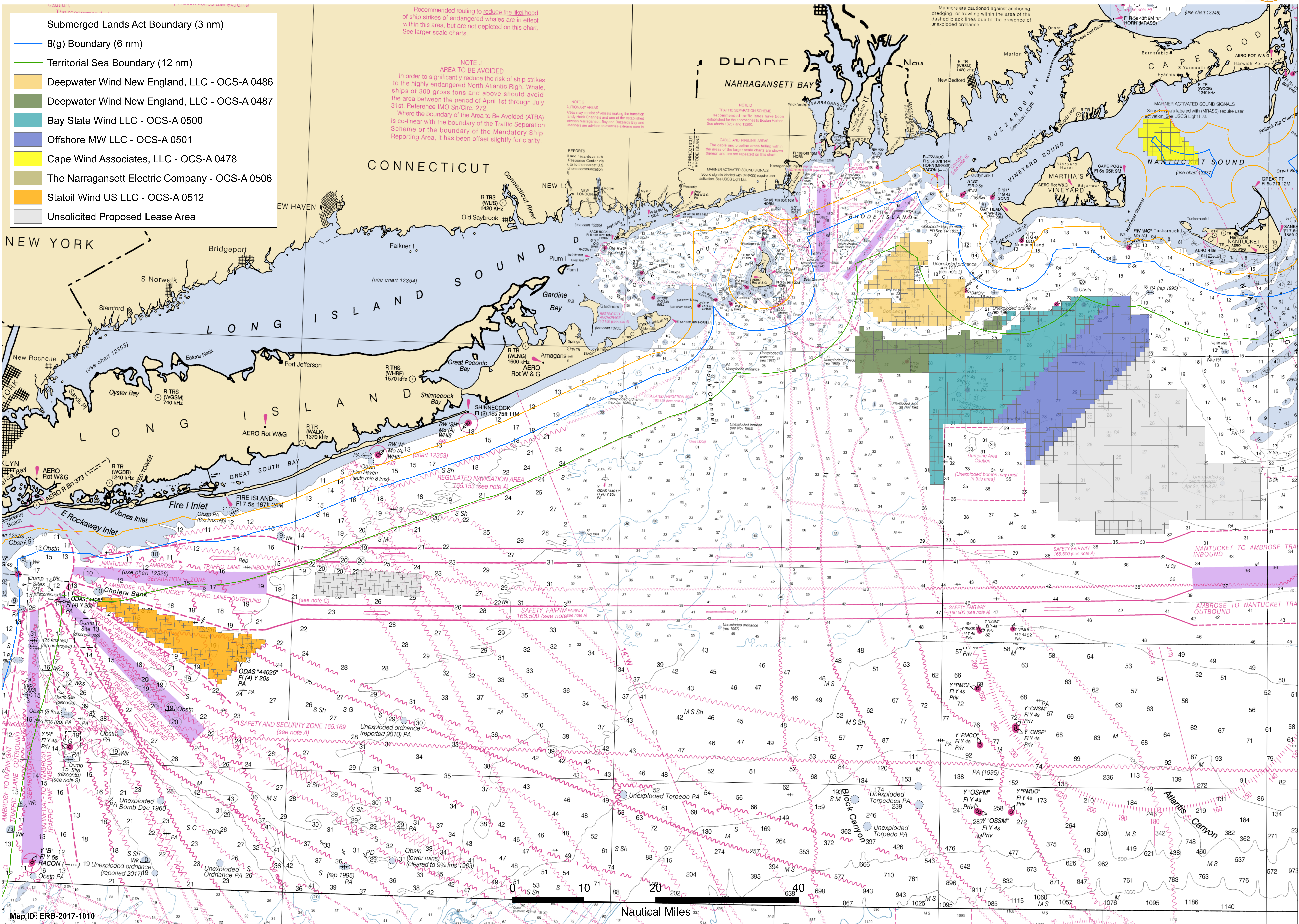


Rhode Island, Massachusetts and New York Renewable Energy Leases and Planning Areas

- Submerged Lands Act Boundary (3 nm)
- 8(g) Boundary (6 nm)
- Territorial Sea Boundary (12 nm)
- Deepwater Wind New England, LLC - OCS-A 0486
- Deepwater Wind New England, LLC - OCS-A 0487
- Bay State Wind LLC - OCS-A 0500
- Offshore MW LLC - OCS-A 0501
- Cape Wind Associates, LLC - OCS-A 0478
- The Narragansett Electric Company - OCS-A 0506
- Statoil Wind US LLC - OCS-A 0512
- Unsolicited Proposed Lease Area

Recommended routing to reduce the likelihood of ship strikes of endangered whales are in effect within this area, but are not depicted on this chart. See larger scale charts.

NOTE J AREA TO BE AVOIDED
In order to significantly reduce the risk of ship strikes to the highly endangered North Atlantic Right Whale, ships of 300 gross tons and above should avoid the area between the period of April 1st through July 31st. Reference IMO Sn/Circ. 272.
Where the boundary of the Area to Be Avoided (ATBA) is co-linear with the boundary of the Traffic Separation Scheme or the boundary of the Mandatory Ship Reporting Area, it has been offset slightly for clarity.



Map ID: ERB-2017-1010

Nautical Miles