

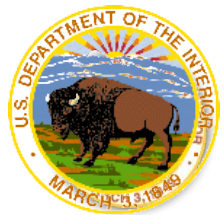
A wide-angle photograph of a coastal landscape. In the foreground, there are sandy dunes covered with tall, thin, green and brown grasses. A path of sand leads from the dunes towards the ocean. The ocean is visible in the middle ground, with white-capped waves breaking onto a sandy beach. The sky is overcast and grey. The entire image is framed with rounded corners.

Northeast Sand Management Working Group




July 15, 2014

1 to 3 p.m.

Introductions



Webinar Groundrules

- Please select *6 or the mute button to mute your audio to the phone

- **Please do not put the line on hold!**
- Click the “raise hand” icon in the top of the webinar window to enter the discussion queue; click again to lower your hand after speaking

- You can also share questions using the chat pod in the bottom left of the webinar window
- Click the “full screen” button – top right of the presentation pod – to make the presentation bigger


This call will be recorded for those unable to attend.



Time	Discussion Topic
1:00	Welcome and Introductions
1:10	Overview of BOEM Marine Minerals Program
1:15	Summary of Coastal Restoration Projects
1:30	Overview of Environmental Review Process
1:45	Update on Hurricane Sandy Funding
2:00	Update on Cooperative Agreements
2:15	Update on Broad Agency Announcement
2:30	Discussion of Studies Program and Ongoing Studies
2:50	Wrap Up and Next Steps
3:00	Adjourn



- Introduce the MMP
- Describe purpose, projects, and process to obtain sand resources
- Discuss MMP coordination activities
- Present Hurricane Sandy initiatives
- Discuss environmental review process and MMP's studies

Key Outcomes

- Provide updates on BOEM activities
- Obtain feedback on projects and process
- Determine topics of discussion for next meeting

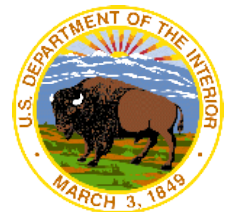


Overview of BOEM's Marine Minerals Program

Jeff Reidenauer, Ph.D
Chief, Marine Minerals Program

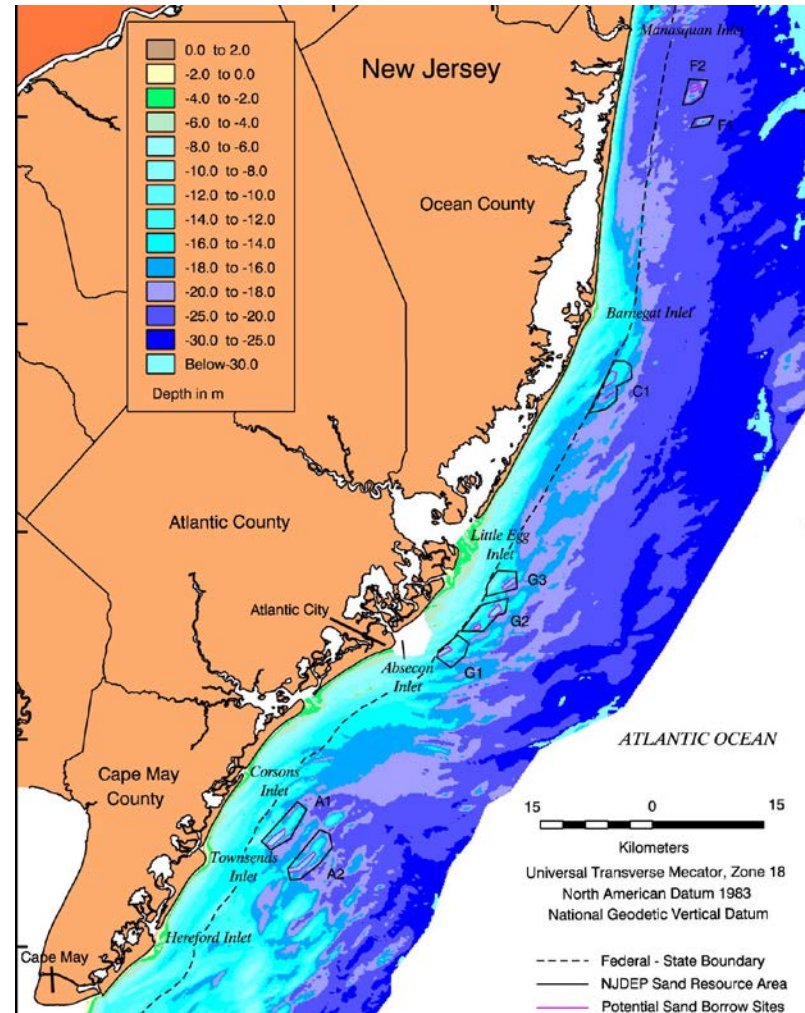


- Marine Minerals Program (MMP)
- Renewable Energy Program (OREP)
- Oil and Gas Program (O&G)



Outer Continental Shelf Lands Act (OCSLA) (43 U.S.C. 1331, et. seq.)

Outer Continental Shelf (OCS) or Federal jurisdiction begins 3 nautical miles (nm) from shore (or 3 leagues offshore Texas and west coast of Florida) and extends 200 nm



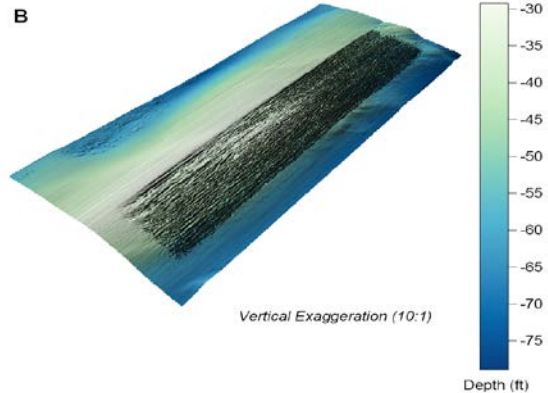
BOEM is the only Agency responsible for managing development of OCS marine mineral resources

- Hard Mineral Competitive Leasing (ex., Gold, Rare Earth Minerals, Copper, Zinc, Silver)
- Competitive Sand Leasing (ex., Private Beaches & Industry)

➤ **Noncompetitive Negotiated Sand Conveyance**



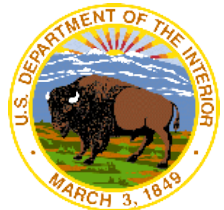
Sand Ridge -
Wallops Island (VA)
Shoal A Borrow Area
Post-Construction Bathymetry (Hopper Dredge)



Public Law 103-426 (1994): Amended OCSLA to allow BOEM to grant noncompetitive negotiated agreements for Federal sand, gravel, or shell resources for use in shore protection or other public works projects

“The Secretary may negotiate with any person an agreement for the use of Outer Continental Shelf sand, gravel and shell resources –

- (i) for use in a program of, or project for, shore protection, beach restoration, or coastal wetlands restoration undertaken by a Federal, State, or local government agency; or
- (ii) for use in a construction project, that is funded in whole or in part by or authorized by the Federal Government.”



Overview of Leasing Process

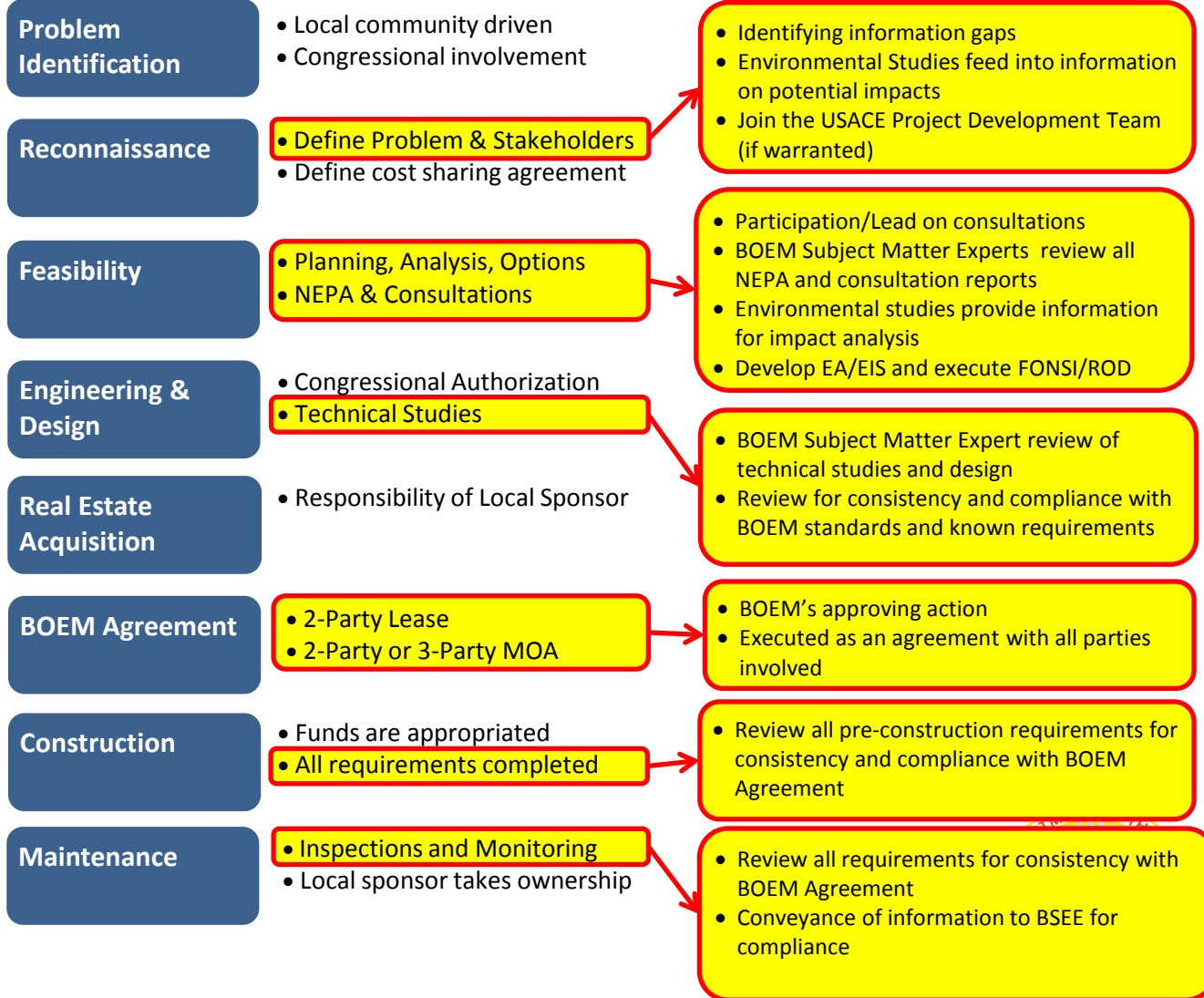
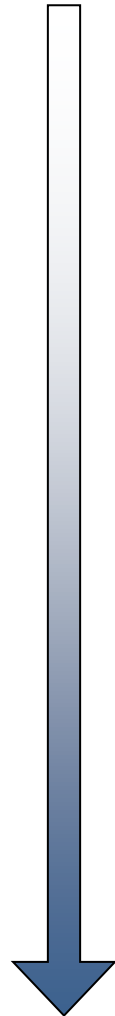
Assateague Island, MD



Before



After

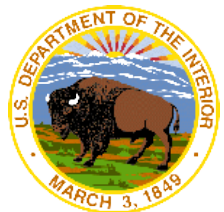


= BOEM Input/Involvement

3 Types of Agreements Are Used to Convey Sand and Gravel Noncompetitively

- **2-Party Memorandum of Agreement (MOA)**
 - ✓ Negotiated between another Federal Agency and BOEM
- **3-Party Memorandum of Agreement (MOA)**
 - ✓ Negotiated between a Locality (State, county, city, parish etc.), another Federal Agency and BOEM
- **2-Party Lease**
 - ✓ Negotiated between a Locality (State, county, city, etc.) and BOEM

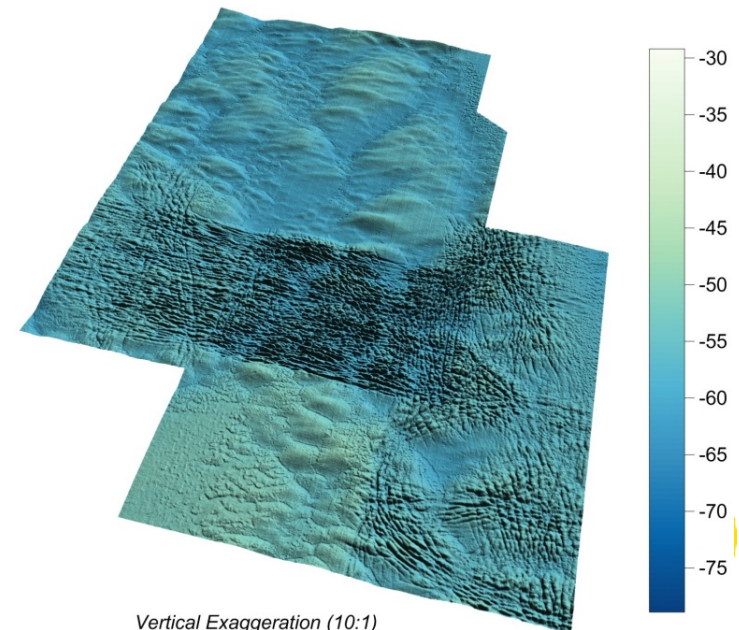
Each project is unique, having different parties involved, different environmental concerns and different leasing concerns, because of this each Agreement is for a one-time use (length 2 yrs).



- Notifications
- Dredge Positioning
- Dredge Operating Requirements
- Production and Volume Information
- Notice to other Users
- Marine Pollution Control and Contingency Plan
- Discovery of MEC Procedures
- Bathymetric Surveys
- Protection of Archaeological Resources
- Project Completion Reporting
- Environmental Compliance Reporting
- Environmental Monitoring



**Sand Ridge Field -
Duval County (FL)
Duval Borrow Area
Post-Construction Bathymetry (Hopper Dredge)**



Program Statistics

20

Years of
Managing
OCS Marine
Minerals

130

Research
Projects

23

OCS Borrow
Areas Used

92

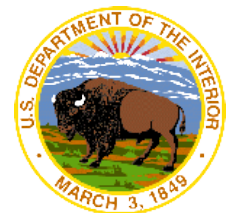
Million Yd³
of OCS Sand
Conveyed

256

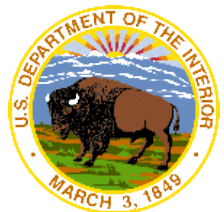
Miles of
Coastline
Constructed

46

Leases &
Agreements
Executed

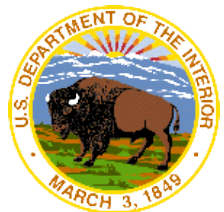


1. Is the role and function of the MMP and BOEM clear?
2. Do you have questions about the current status of BOEM activities?



Summary of Coastal Restoration Projects

Jennifer Rose
Geologist
Leasing Division



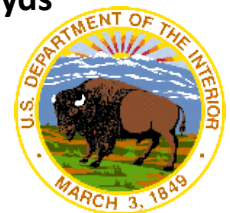


Whiskey Island, LA
8.3 mil cu yds

Long Beach Island, NJ
7 mil cu yds

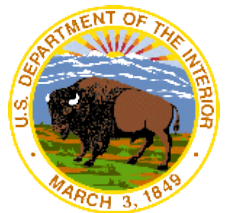
NASA Wallops, VA
3 mil cu yds +
1 mil cu yds

Brevard County, FL
2.4 mil cu yds



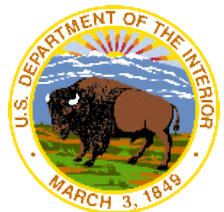
Current Projects

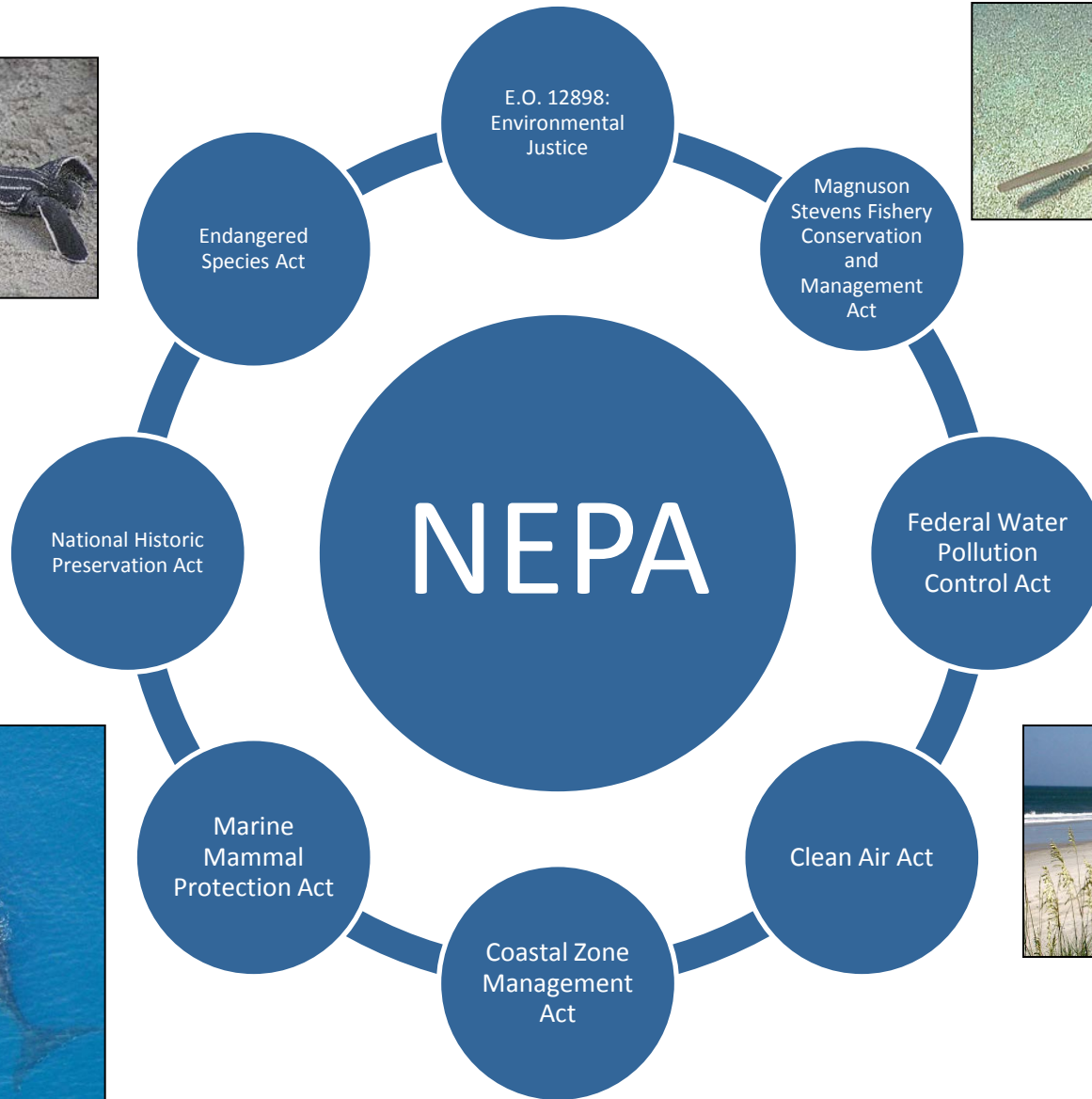
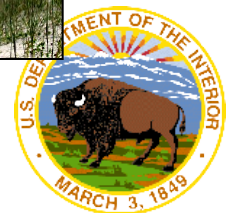
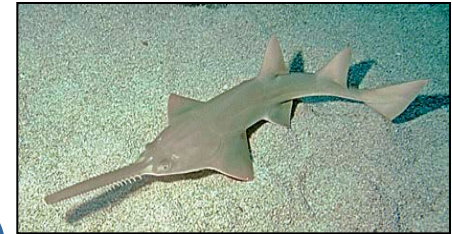
Project	Volume (cy ³)	Lease Expiration	Type of Project	EA/EIS	ROD/ FONSI	Response Ltr Sent	Kick-off Mtg Held	MOA Execution	Construction Status	Deliverables Received
Great Egg Harbor, NJ	TBD	TBD	TBD	In progress	No	No	No	No	Not Begun	No
Manasquan, NJ	TBD	TBD	TBD	In progress	No	No	No	No	Not Begun	No
Long Beach Island, NJ	7,000,000	Jul-18	3-Party MOA/EA/FONSI	Yes	Yes	Yes	Yes	Yes	Not Begun	No
Dam Neck, VA	700,000	Jul-15	3-Party MOA/EA/FONSI	Yes	Yes	Yes	Yes	Yes	Not Begun	No
Wallops Island, VA	1,000,000	Nov-15	2-Party MOA/EA/FONSI	Yes	Yes	Yes	Yes	Yes	In progress	No



Overview of the Environmental Review Process

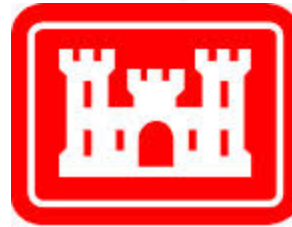
Jennifer Culbertson, Ph.D.
Oceanographer
Division of Environmental Assessment



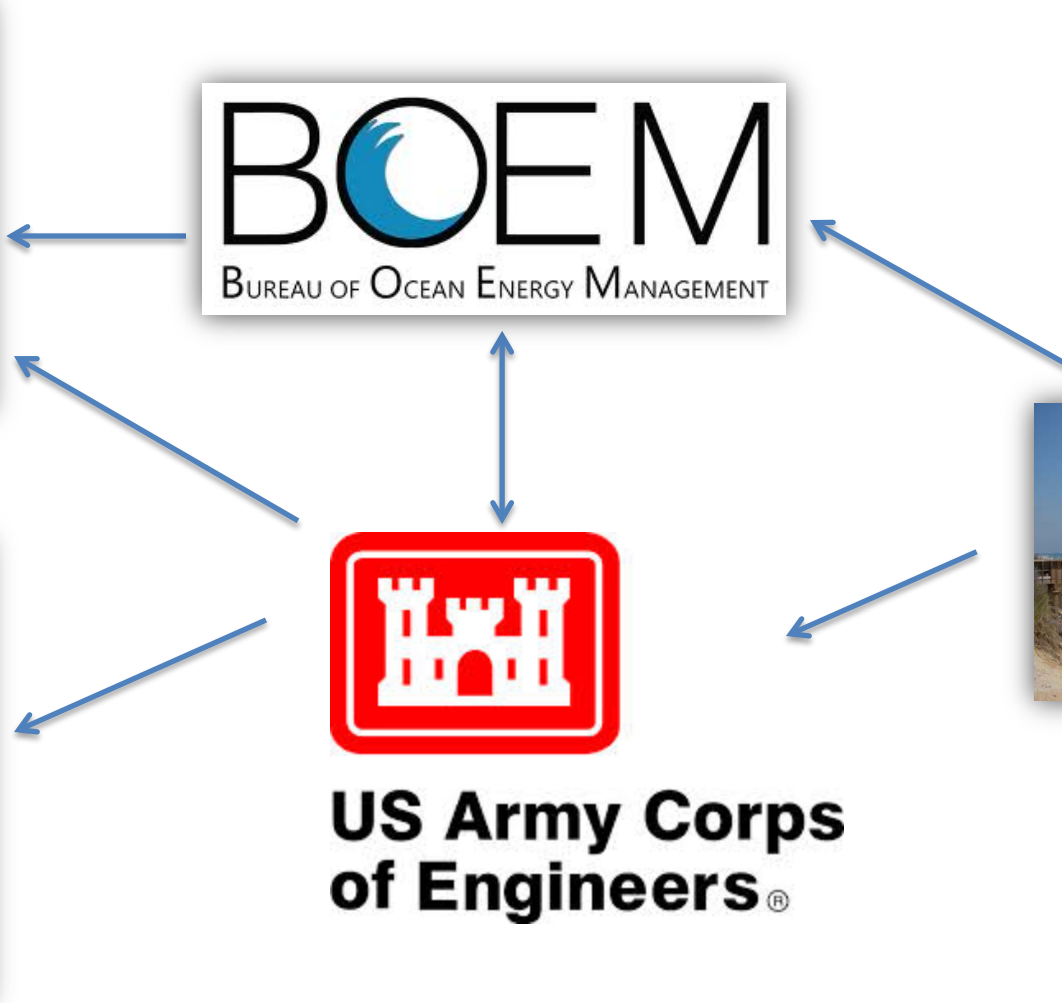
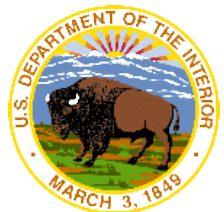


Federal Agency Coordination

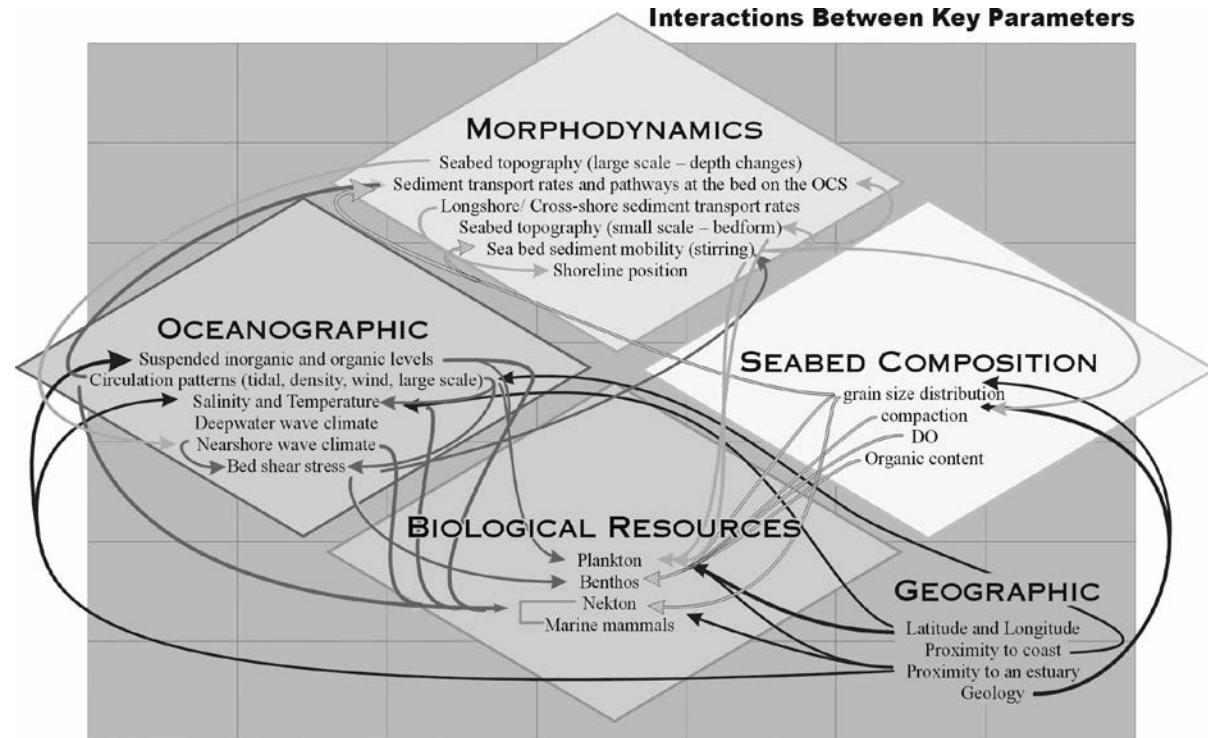
For the Endangered Species Act (ESA)



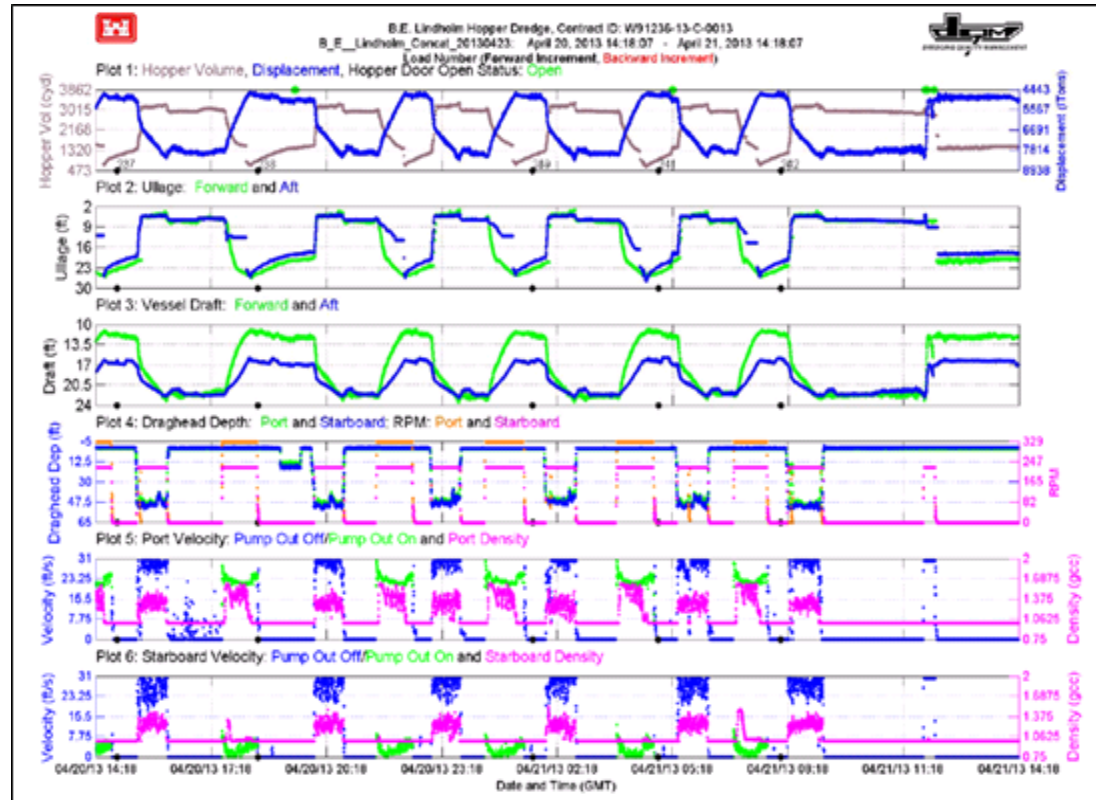
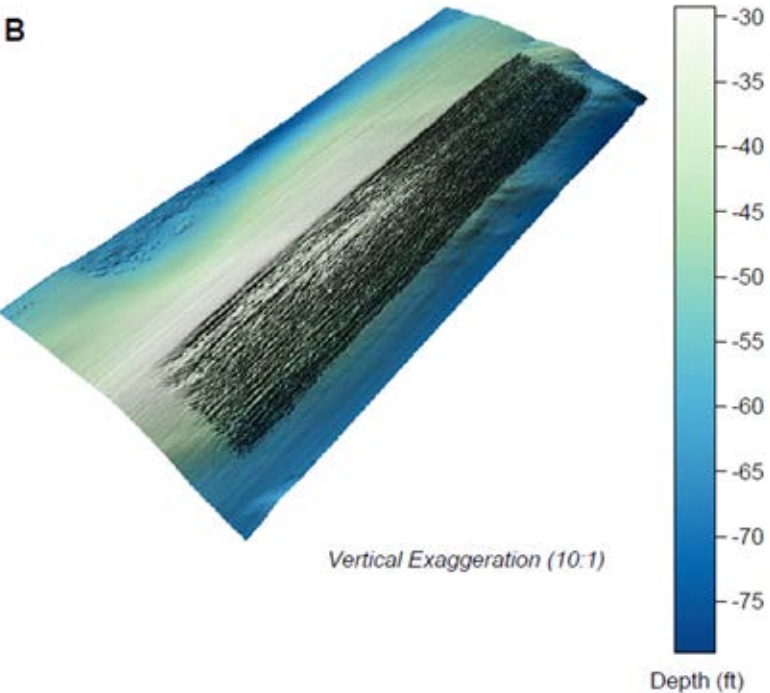
**US Army Corps
of Engineers®**



- Physical Environment
 - Hydrodynamics, sediment transport
 - Geomorphology
 - Water/air quality
 - Noise
- Biological Environment
 - Benthic and fish species and habitat
 - T&E Species
- Socioeconomic Environment
 - Archeological/cultural resources
 - Recreation and tourism
 - Fishing, navigation, and energy



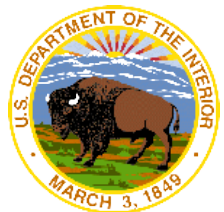
B



Examples include tracking dredge parameters (position, pump status, etc.), endangered species observer reporting, and borrow area morphologic evolution

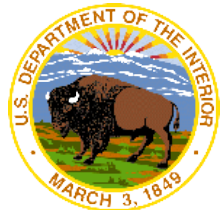


1. Do you have any questions about the NEPA process?
2. Do you have any questions about associated consultations?
3. Do you have any questions about the minimization/mitigation measures and/or project monitoring requirements?



Update on Hurricane Sandy Funding

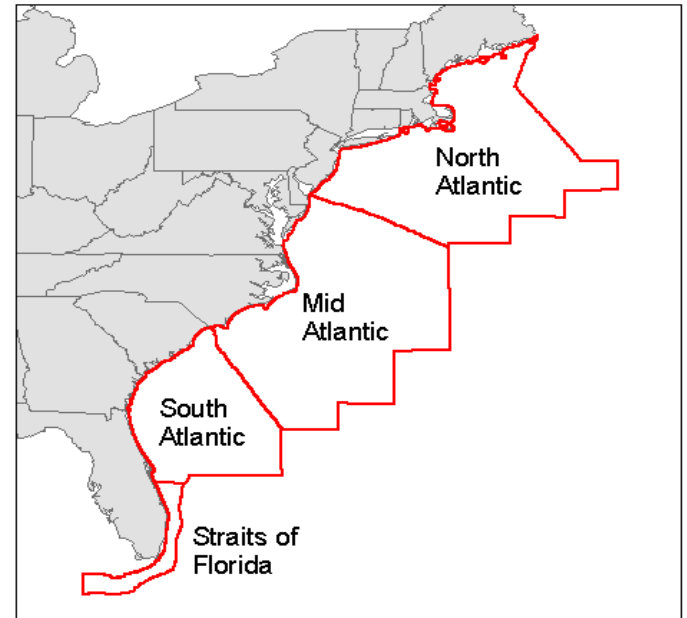
Jennifer Rose
Geologist
Leasing Division



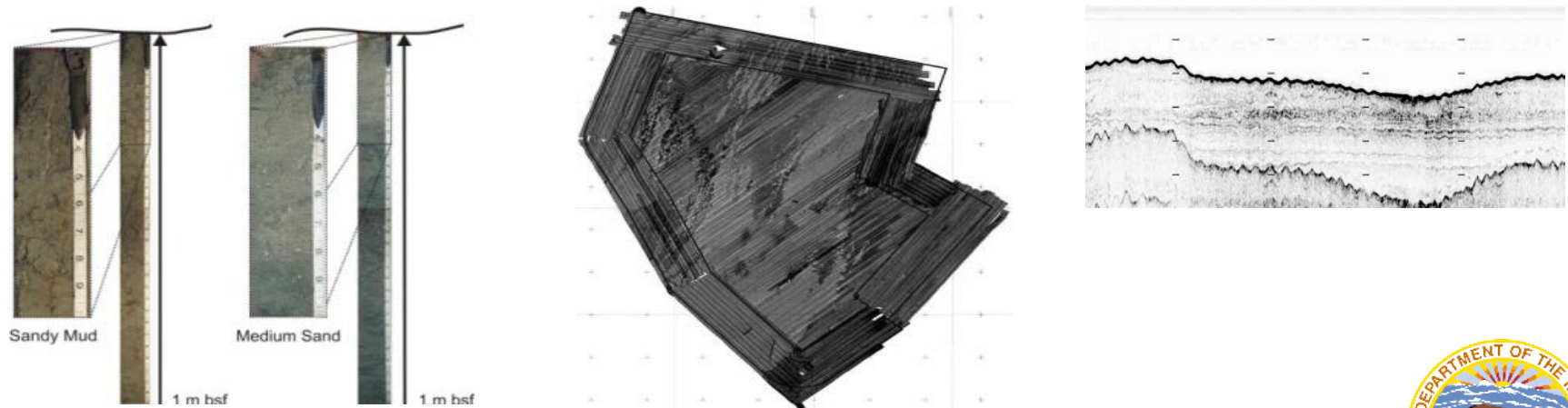
- \$13.6M
 - Geological & Geophysical (G&G) Data Acquisition
 - Cooperative Agreements with States
 - Environmental Monitoring
 - Environmental Assessment
 - Outreach




- Comprehensive data set
 - Delineate sand resources
 - Build Inventory
 - Distribute data
 - Manage resources



- Round 1: Analyzing/Discussing State needs
 - Review/consolidate existing data
- Round 2: Analysis of G&G data



- One Coop per state
- Up to \$200,000 per state
- No matching required
- 24 months to complete



Marine Minerals Activities - Hurricane Sandy
Marine Minerals Activities
Number: 15.424
Agency: Department of the Interior
Office: The Bureau of Ocean Energy Management, Regulation, and Enforcement

PROGRAM INFORMATION

Authorization (040):
Outer Continental Shelf (OCS) Lands Act, 43 U.S.C. 1331.

Objectives (050):
To evaluate OCS sand deposits for coastal restoration and beach nourishment needs, and to foster good working relationships regarding OCS mineral issues with coastal States due to effects from hurricanes and coastal erosion. This can be accomplished through a variety of activities such as conducting state needs assessments, geophysical and geological surveys of specific areas on the OCS, analysis of existing or new geophysical and geological data to delineate new borrow areas, offshore bathymetry research, seismic data analysis and interpretation, application of marine resistivity or other geophysical techniques for sand resource identification, and cultural resources identification.

Types of Assistance (060):
Cooperative Agreements

Uses and Use Restrictions (070):
The funds must be spent for OCS-related sand activities. These cooperative agreements are awarded to assist States in order to identify needs and sand supplies for beach nourishment projects.

Eligibility Requirements (080)

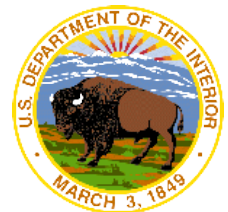
Applicant Eligibility (081):
Proposals are received from coastal States in need of coastal restoration.

Beneficiary Eligibility (082):
State agencies and organizations participating in the project, as well as the general public.

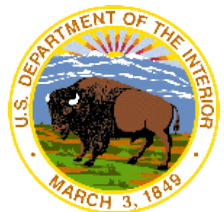
Credentials/Documentation (083):
States submit proposals to BOEM, which furnish evidence of the applicant's qualifications for performance of the proposed research. OMB Circular No. A-67 applies to this program.

Application and Award Process (090)

Preapplication Coordination (091):

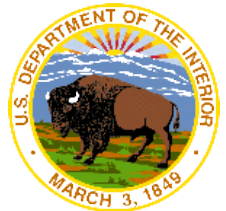


Do you have any clarifying questions about these opportunities?



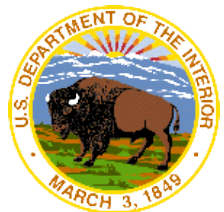
Update on Cooperative Agreements

Jeff Waldner, P.G.
Geologist
Leasing Division



MMP History of State Cooperative Agreements

- MMS is approached by Alabama, Louisiana, New Jersey, Delaware, Maryland, and Virginia in the early 1990s about jointly characterizing OCS sand deposits just beyond the 3-mile limit
- MMS is able to secure funding for a cooperative sand program
- State Coop Sand Program formed in 1992



MMP History of State Cooperative Agreements:

Additional States Join Program

- North Carolina (1993)
- Florida (1994)
- South Carolina (1994)
- Texas (1999)
- California (2003)
- Maine (2003)
- Massachusetts (2003)
- New Hampshire (2004)

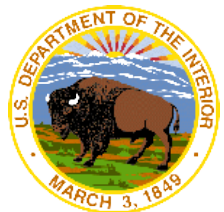
Agreements end in mid-late 2000's due to lack of funding



Hurricane Sandy

Coastal Recovery and Resiliency

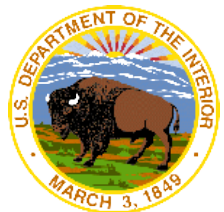
- Negotiated Cooperative Agreements planned with 13 Atlantic Coastal States
 - State Geological Surveys & associated institutions
 - State Agencies
 - Update on the status of Northeastern SMWG Coops



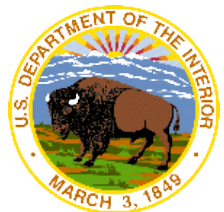
1. Develop a database of existing geologic and geophysical data
2. Determine states' need for sand
3. Compile and analyze existing sand resources data
4. Identify data gap areas where future information needs to be collected



1. Increased availability of existing data
2. Needs Assessments for states, region, and East Coast
3. Collaborative web tools for state and Federal governments
4. Identification of data gaps for future surveys
5. Increased communication between Federal and state stakeholders

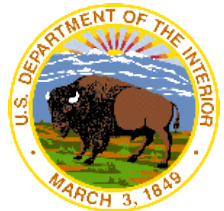


Do you have any questions regarding the cooperative agreements or their approach?

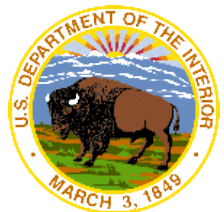


Marine Minerals Program Coordination

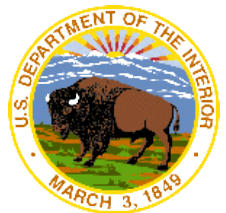
Jeff Waldner, P.G.
Geologist
Leasing Division



- BOEM MMP internal coordination with Office of Renewable Energy Programs
- DOI agency coordination - DOI Regional Team Competitive Grant Project Funding (NFWF), USGS, FWS, and NPS HS projects
- USACE North Atlantic Comprehensive Study
- NOAA – BOEM Marine Cadastre
- Regional Ocean Partnerships – Mid-Atlantic Regional Council on the Ocean(MARCO) & Northeast Regional Ocean Council (NROC)
- Sandy Regional Infrastructure Team for federal review and permitting (HUD lead)
- National Disaster Recovery Framework (FEMA) Natural and Cultural Resources Recovery Coordination (DOI lead)

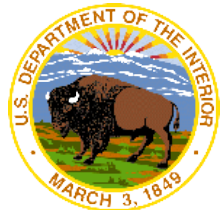


Do you have any questions regarding MMP coordination activities?

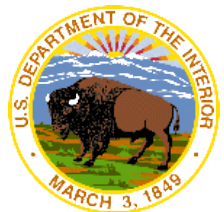


Update on the Broad Agency Announcement

Jennifer Rose
Geologist
Leasing Division



- Completed environmental review/consultations
- BAA published March 21, closed June 2
- Award granted shortly
- 2-year timeline to conduct G&G surveys
- State input into survey areas

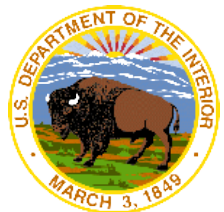


BAA Tasks

1. Determine Survey Areas
2. Develop Data Acquisition Plan
3. Conduct G&G
4. Provide data to BOEM, states, and stakeholders

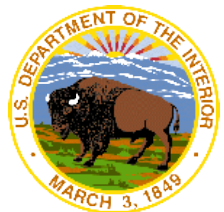


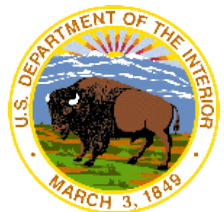
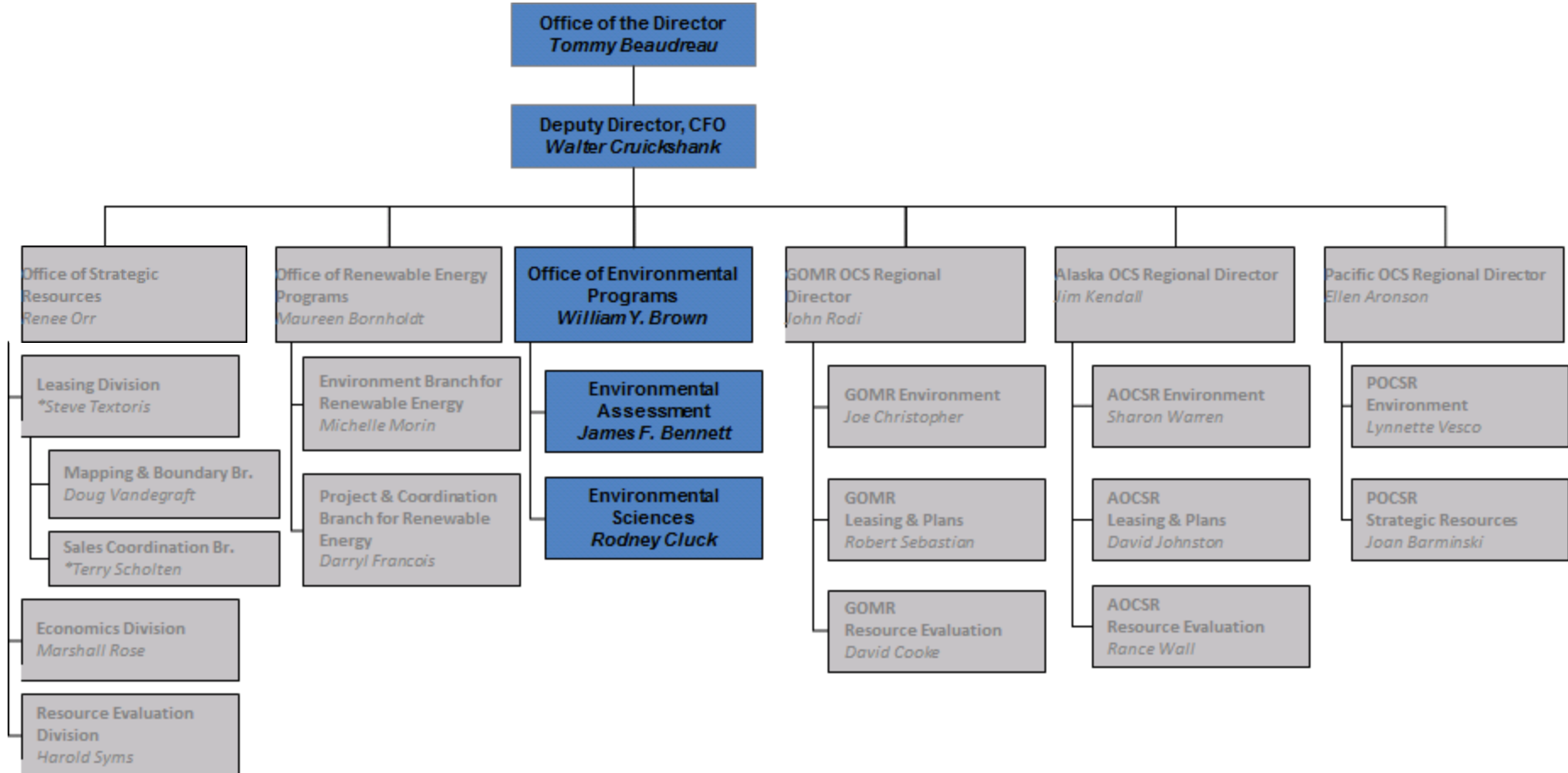
1. Is the purpose of the BAA clear?
2. Is the role of states clear?



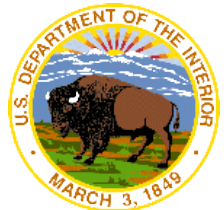
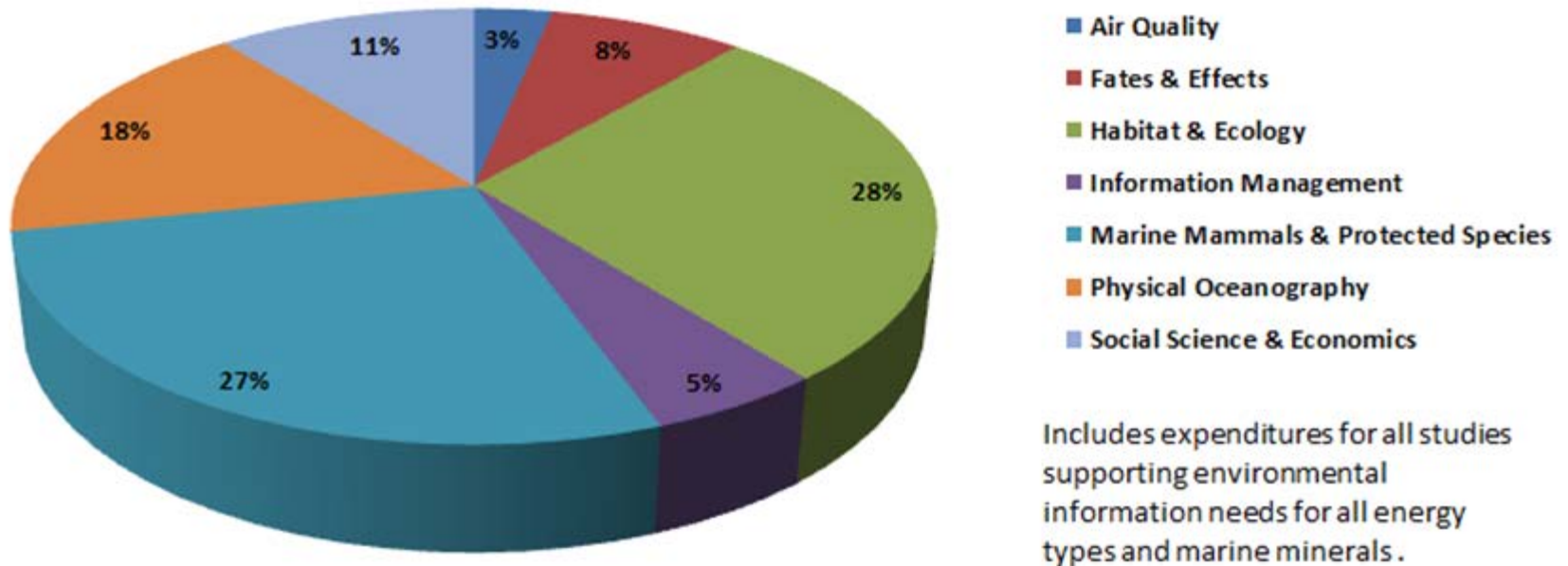
Studies Program: Ongoing and Proposed Studies

Jennifer Culbertson, Ph.D.
Oceanographer
Division of Environmental Assessment





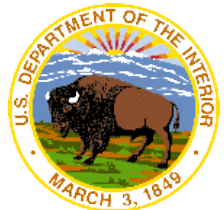
Environmental Studies Program Funds by Discipline FY 2008-2014 Cumulative



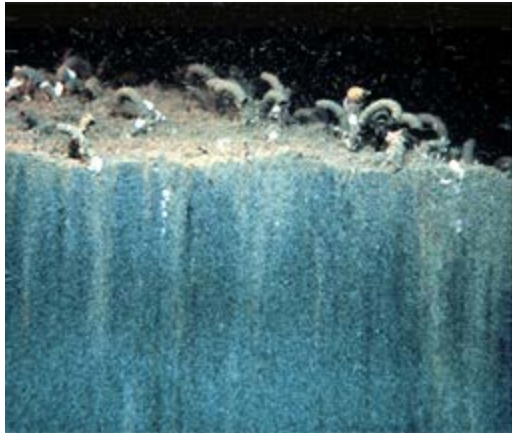
Applied science for informed decisions on ocean energy



- Provide the information needed to predict, assess, and manage impacts from offshore energy and marine mineral exploration, development, and production activities on human, marine, and coastal environments
- \$15.2 million spent on MMP Environmental Studies
- Mitigation and minimization measures derived from research findings such as rotational dredging methods and better emissions estimates
- Identify critical data gaps for guiding future research needs
- <http://www.boem.gov/Marine-Minerals-Research-and-Studies/>



Purpose: Characterize biological differences and ecosystem changes in dredged and non-dredged areas

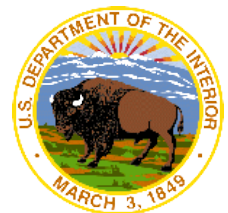


- Study bottom habitat, benthic communities, and fishes
- Compare environmental and resource state in nearby control sites with similar physical and oceanographic characteristics



Monitoring Partnerships

- *Natural Habitat Associations and the Effects of Dredging on Fish at the Canaveral Shoals, East-central Florida*
- *Ecological Function and Recovery of Biological Communities within Dredged Ridge-Swale Habitats and in the South-Atlantic Bight study University of Florida*



- Seasonal movement of the fish and habitat associations will be documented by supplementing the existing Florida Atlantic Coast Telemetry (FACT) Array receivers with 23 additional receivers
- Complemented by 200 + existing receivers

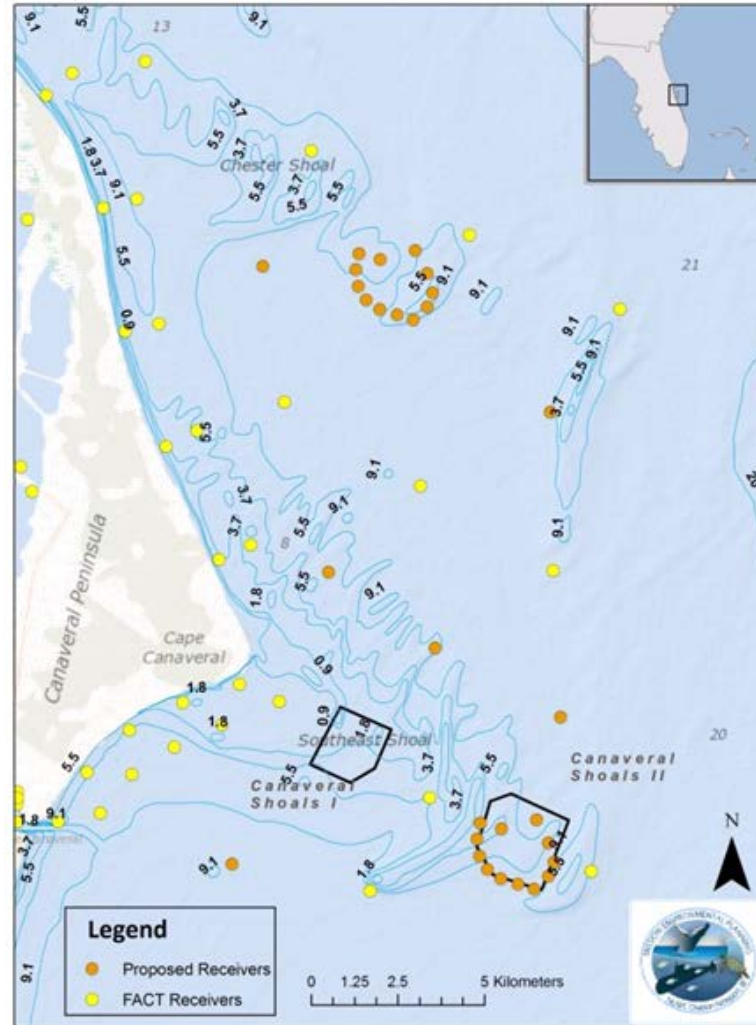
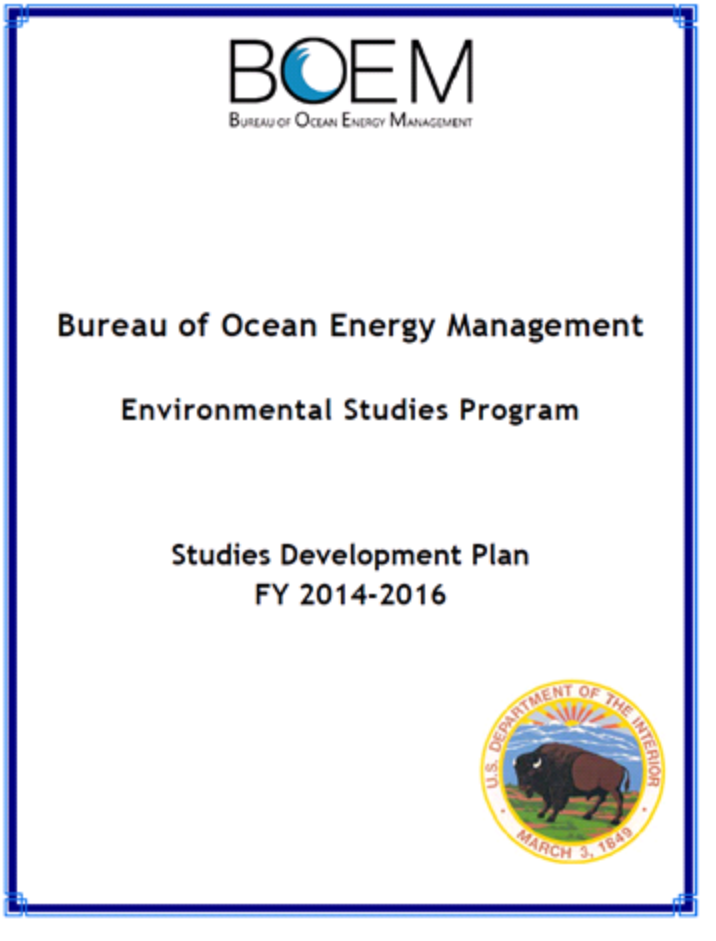
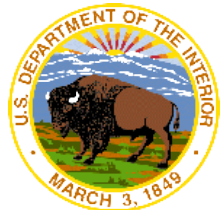


Figure 1. Existing and Proposed Receivers in Canaveral and Chester Shoals, FL



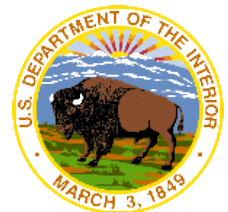
- Managing Dredge Impacts by Optimizing the Use of Sand Resources
- Sediment Sorting During Coastal Restoration Projects: Implications for Resource Management, Environmental Impacts, and Multiple Use Conflicts
- Development of a Decision Support Tool to Reduce Sea Turtle Dredging Entrainment Risk



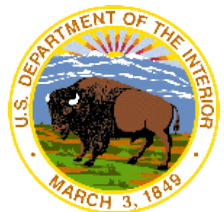
Development of a Decision Support Tool to Reduce Sea Turtle Dredging Entrainment Risk

Concern: Current required hopper dredging windows are based on water temperature, are conservative, and may increase costs unnecessarily.

Proposed Study: Develop a standardized decision support tool to assess project specific dredging entrainment risk and improve the effectiveness of mitigation planning decisions within federal marine mineral resource areas

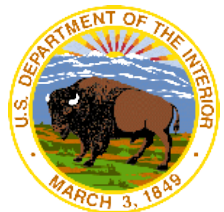


1. Are there topics or concerns associated with the use of offshore borrow sites that you would like to see addressed through our studies?
2. Are there studies, data collections, or any other information sources that you think we may find useful?

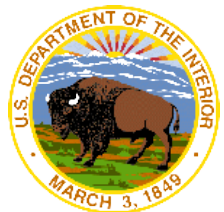


Wrap Up and Next Steps

Jeff Reidenauer, Ph.D.
Chief, Marine Minerals Program



- MMP purpose, lease process
- Data Acquisition through the BAA
- Coops being negotiated
- Environmental review process
- Studies for science-backed decisions



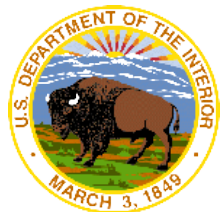
- In-Person Meeting before end of 2014
- Any suggestions or ideas for the next meeting?

BOEM MMP Website:

<http://www.boem.gov/Marine-Minerals-Program/>

Florida Sand Management Working Group Website:

<http://tech.kearnswest.com/boemsmwg/florida/>



Jeffrey Reidenauer, Chief, Marine Minerals Branch

Jeffrey.reidenauer@boem.gov

703-787-1851

Jennifer Rose, Leasing Division

Jennifer.rose@boem.gov

703-787-1223

Jeffrey Waldner, Leasing Division

jeffrey.waldner@boem.gov

703-787-1779

Jennifer Culbertson, Division of Environmental Assessment

Jennifer.culbertson@boem.gov

703-787-1742

