



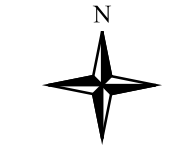
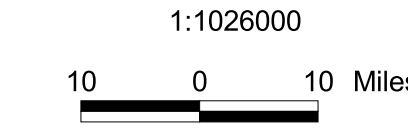
United States Department of the Interior  
Minerals Management Service  
Gulf of Mexico OCS Region

**CENTRAL GULF OF MEXICO PLANNING AREA  
LEASE SALE 185, MARCH 19, 2003**

**BIDS RECEIVED**

- 1 Bid (Yellow)
- 2 Bids (Orange)
- 3 Bids (Green)
- 4 Bids (Brown)
- 5 Bids (Cyan)
- 6 Bids (Blue)
- 8 Bids (Purple)
- 10 Bids (Red)

- Lease Term, Bidding System and/or Royalty Suspension Boundary (Blue line)
- Unleased Blocks or Partial Blocks Currently Deferred/Unavailable (Grey square)



Projection: Albers  
1st Standard Parallel: 24 10 00  
2nd Standard Parallel: 30 10 00  
Central Meridian: -89 00 00

**AREA OF INTEREST**

