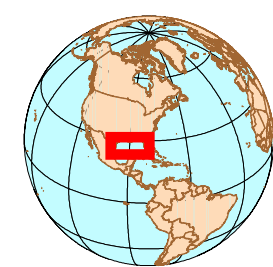


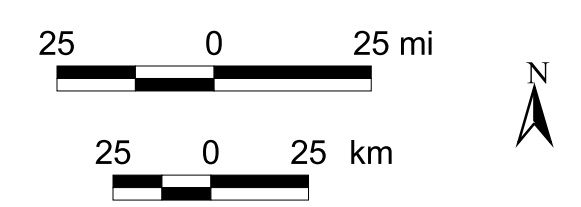
MMS United States Department of the Interior
Minerals Management Service
Gulf of Mexico OCS Region

Active Leases and CGOM Sale 185 March 2003

- BLOCKS RECEIVING BIDS IN 2003
CGOM Sale 185
- Active Leases Issued in 2002
WGOM Sale 184 and CGOM Sale 182
- Active Leases Issued Prior to 2002
- Flower Garden Banks withdrawn from leasing
- Major Metropolitan Areas
- Royalty Relief and Lease Term Lines
- Planning Area Boundary
- Selected Towns and Cities



Scale: 1:1935451
Projection: Albers Equal-Area Conic
Spheroid: Clarke 1866
Central Meridian: -89.17433
Reference Latitude: 27.03441
Standard Parallel 1: 24.89332
Standard Parallel 2: 29.17550



Water Depth (meters)