
MMS

U.S. Department of the Interior
Minerals Management Service
Gulf of Mexico OCS Region

Leasing Activities Information

**CENTRAL GULF OF MEXICO
LEASE SALE 194
March 16, 2005**

**UNLEASED SPLIT BLOCKS
and
AVAILABLE UNLEASED ACREAGE OF BLOCKS WITH
ALIQUOTS AND IRREGULAR PORTIONS
UNDER LEASE OR DEFERRED**

For Oil and Gas Leases in the Gulf of Mexico

—MMS—



**UNLEASED SPLIT BLOCKS
and
AVAILABLE UNLEASED ACREAGE OF BLOCKS
WITH
ALIQUOTS AND IRREGULAR PORTIONS
UNDER LEASE OR DEFERRED**

INSTRUCTION TO BIDDERS

This package identifies the unleased Federal acreage along the offshore Louisiana, Mississippi, and Alabama Federal boundary and available unleased acreages of blocks with portions under lease or deferred. If a block is bid upon, all available unleased acreage within that block must be bid upon.

Method of bidding – As described in the final Notice of Lease Sale 194.

Split and irregular blocks leased as a result of the sale will be legally described by using X and Y coordinates. Any specific questions pertaining to the unleased split blocks, or those with portions under lease, should be referred to Ms. Pat Bryars (504) 736-2763.

CENTRAL GULF OF MEXICO LEASE SALE 194
Blocks list by map area and block number sequence

LA1 WEST CAMERON

26
27
29
31
132

LA2 EAST CAMERON

3
8
10
14
15
20
21
22
195
204

LA3 VERMILION

12
15
16
18
19
20
29
34
57
104
217
226

**LA3D SOUTH MARSH
ISLAND NORTH**

221
241

LA4 EUGENE ISLAND

9
11
12
12A
18
21
23
25

LA4 EUGENE ISLAND

(continued)

34
35
90
93
116
189
214

**LA4A EUGENE ISLAND
SOUTH**

301

LA5 SHIP SHOAL

2
8
9
10
13
14
16
24
25
49
64
71

LA6 SOUTH TIMBALIER

9
10
16
19
27

LA6C BAY MARCHAND

5

LA7 GRAND ISLE

15
24
25

LA8 WEST DELTA

16
17
25
67
68
80
81

**LA8A WEST DELTA
SOUTH**

111

LA9 SOUTH PASS

17
29
31
35
39
52
57

LA9A SOUTH PASS S&E

66
78

LA10 MAIN PASS

6
17
18
43
55
57
58
74
91
92
127
152

LA10B BRETON SOUND

24
44

LA11 CHANDELEUR

5
8
14
15
16

LA12 SABINE PASS

5

NG15-09 AMERY TERRACE

162
163
164
165
166
199
200
201
202
203
204
205
206
210
211
212
213
214
215
216
217
218
219
235
236
237
238
239
240
241
242
243
273
274
275
276
277
278
279
309

NG15-09 AMERY TERRACE
(continued)

310
311
312
313
314
315
316
317

NG16-07 LUND SOUTH

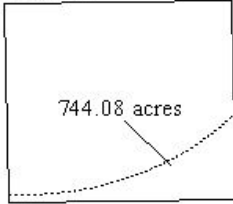
177
178
179
180
181
182
183
184
185
186
187
188
232
233
234
235
236
237
238
239
240
241
242
243
244
245
246
247
248
249
293
294
295

NH16-04 Mobile

765
766
767
809
811
812
813
814
815
816
817
818
829
853
897
898

CENTRAL GULF OF MEXICO LEASE SALE 194
 Split Block Diagrams

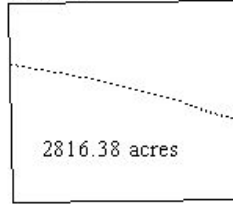
West Cameron
Block 26



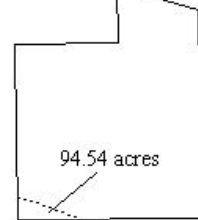
West Cameron
Block 27



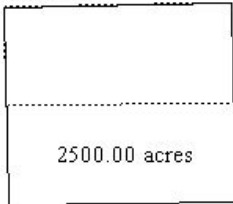
West Cameron
Block 29



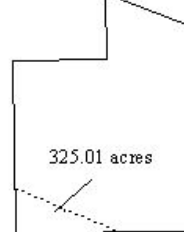
West Cameron
Block 31



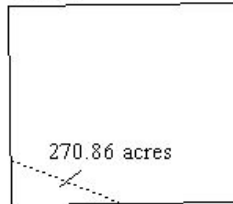
West Cameron
Block 132



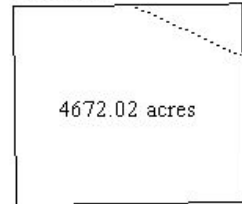
East Cameron
Block 3



East Cameron
Block 8



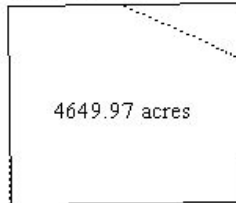
East Cameron
Block 10



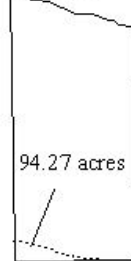
East Cameron
Block 14



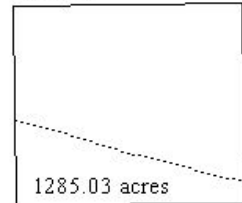
East Cameron
Block 15



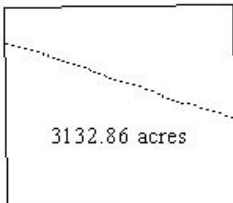
East Cameron
Block 20



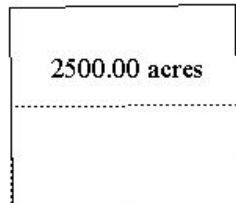
East Cameron
Block 21



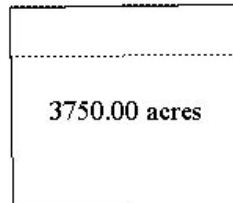
East Cameron
Block 22



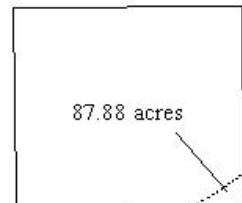
East Cameron
Block 195



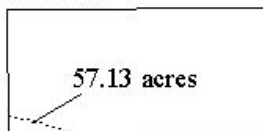
East Cameron
Block 204



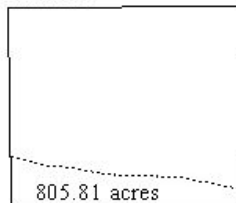
Vermilion
Block 12



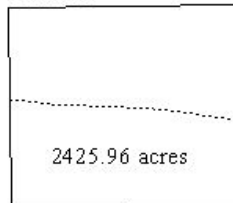
Vermilion
Block 15



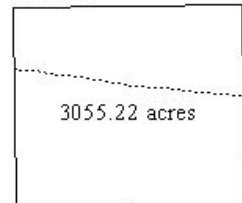
Vermilion
Block 16



Vermilion
Block 18

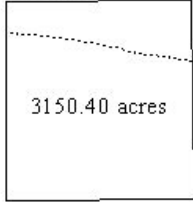


Vermilion
Block 19

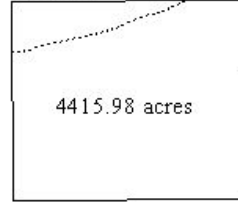


CENTRAL GULF OF MEXICO LEASE SALE 194
 Split Block Diagrams (continued)

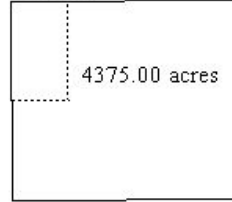
Vermilion
Block 20



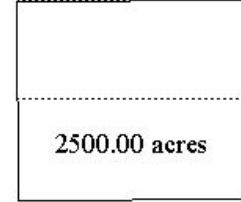
Vermilion
Block 29



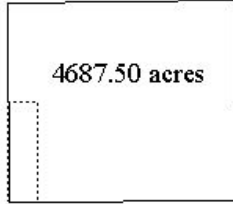
Vermilion
Block 34



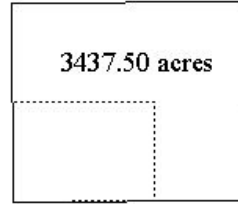
Vermilion
Block 57



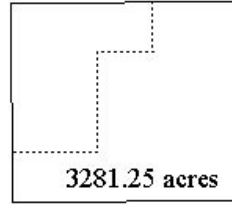
Vermilion
Block 104



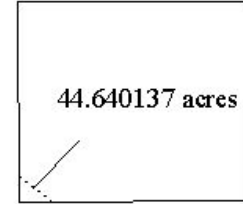
Vermilion
Block 217



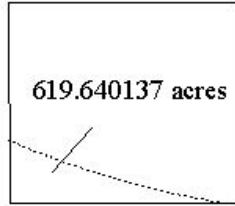
Vermilion
Block 226



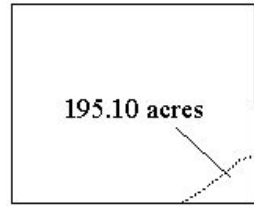
South Marsh Island North
Block 221



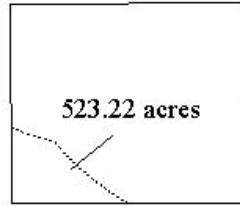
South Marsh Island North
Block 241



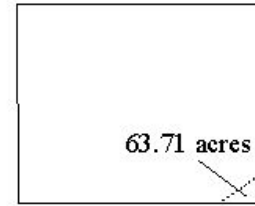
Eugene Island
Block 9



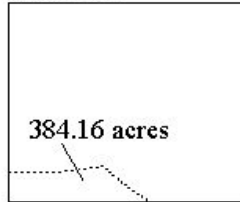
Eugene Island
Block 11



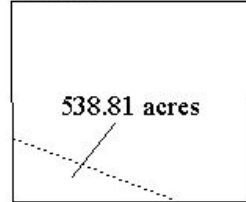
Eugene Island
Block 12



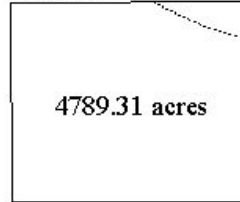
Eugene Island
Block 12A



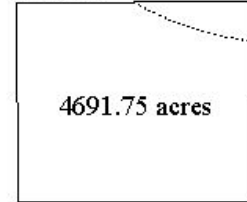
Eugene Island
Block 18



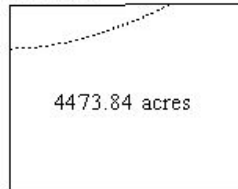
Eugene Island
Block 21



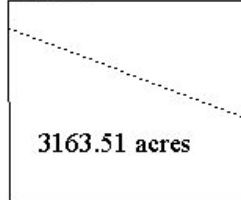
Eugene Island
Block 23



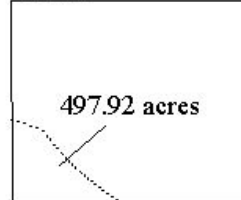
Eugene Island
Block 25



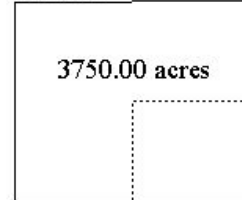
Eugene Island
Block 34



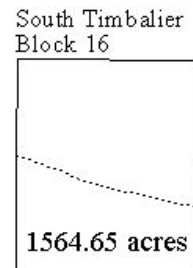
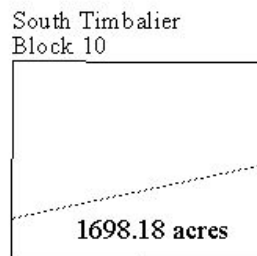
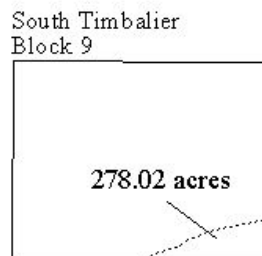
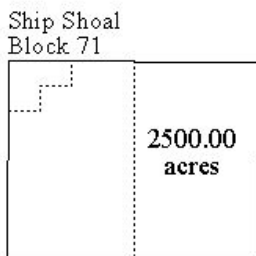
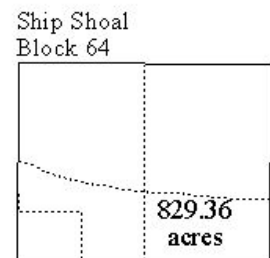
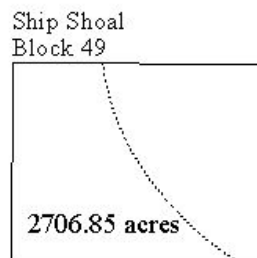
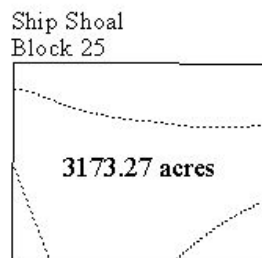
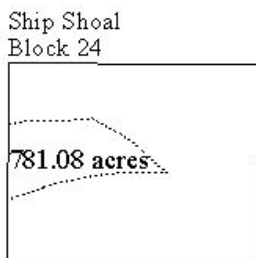
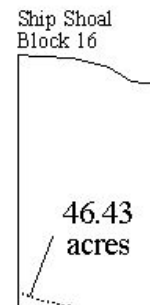
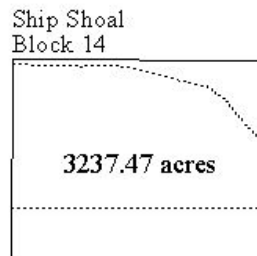
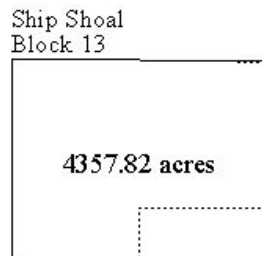
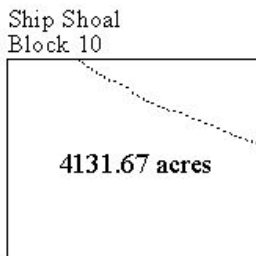
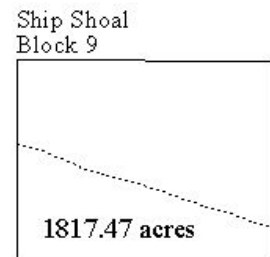
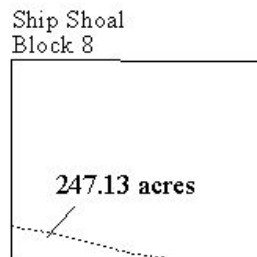
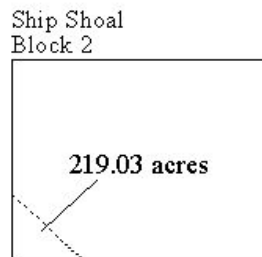
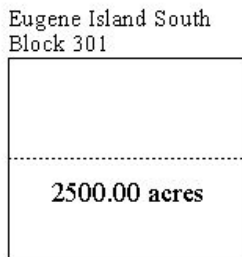
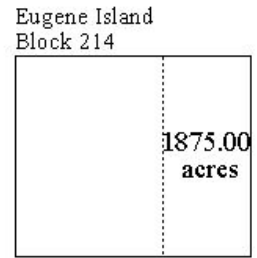
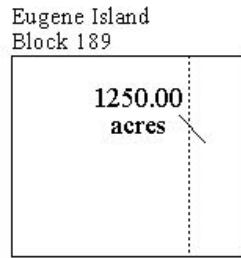
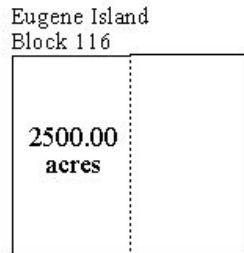
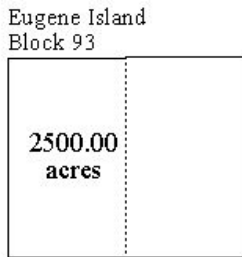
Eugene Island
Block 35



Eugene Island
Block 90

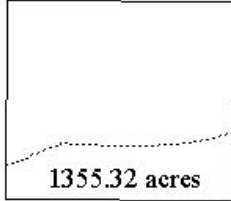


CENTRAL GULF OF MEXICO LEASE SALE 194
 Split Block Diagrams *(continued)*

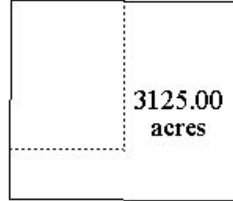


CENTRAL GULF OF MEXICO LEASE SALE 194
 Split Block Diagrams (continued)

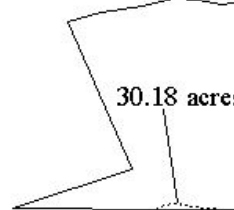
South Timbalier
Block 19



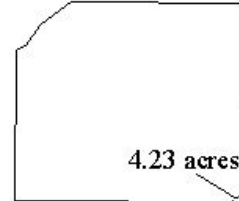
South Timbalier
Block 27



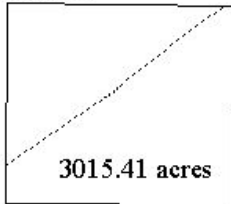
Bay Marchand
Block 5



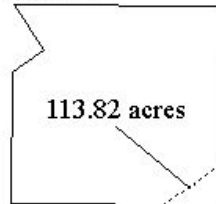
Grand Isle
Block 15



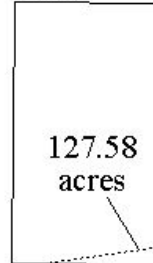
Grand Isle
Block 24



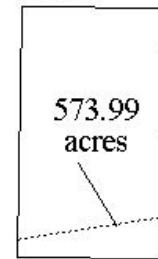
Grand Isle
Block 25



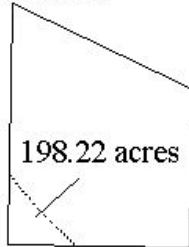
West Delta
Block 16



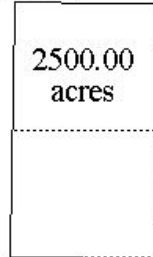
West Delta
Block 17



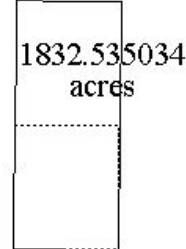
West Delta
Block 25



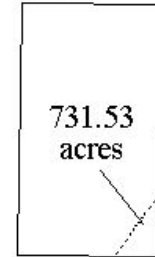
West Delta
Block 67



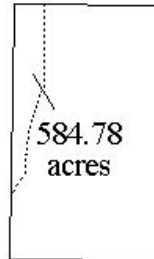
West Delta
Block 68



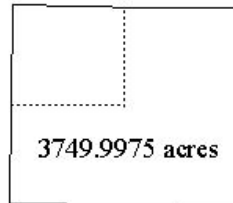
West Delta
Block 80



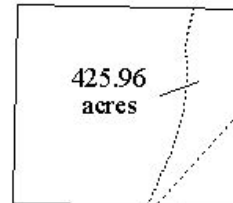
West Delta
Block 81



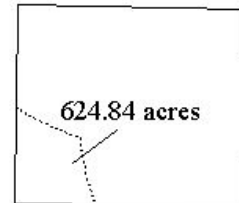
West Delta South
Block 111



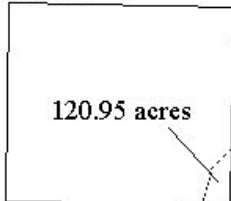
South Pass
Block 17



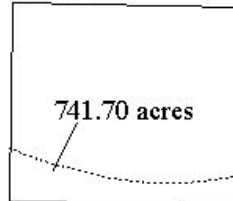
South Pass
Block 29



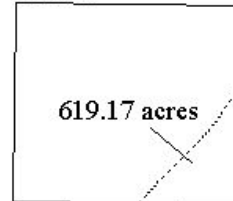
South Pass
Block 31



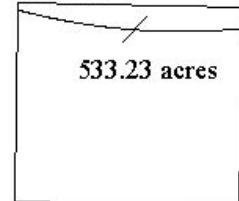
South Pass
Block 35



South Pass
Block 39

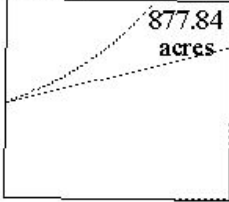


South Pass
Block 52

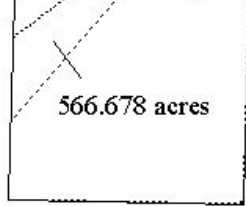


CENTRAL GULF OF MEXICO LEASE SALE 194
 Split Block Diagrams (continued)

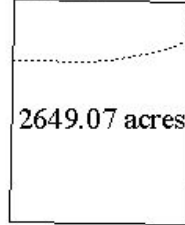
South Pass
Block 57



South Pass S&E
Block 66



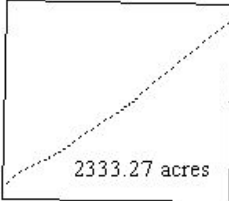
South Pass S&E
Block 78



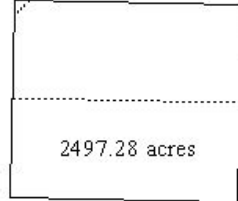
Main Pass
Block 6



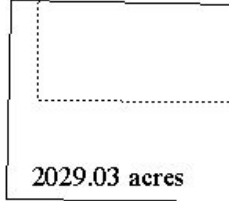
Main Pass
Block 17



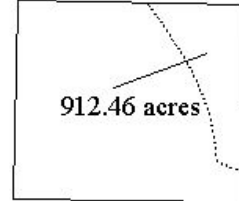
Main Pass
Block 18



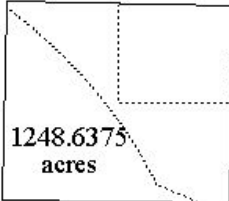
Main Pass
Block 43



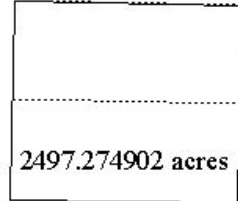
Main Pass
Block 55



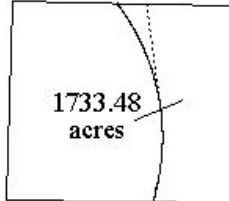
Main Pass
Block 57



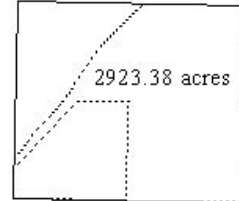
Main Pass
Block 58



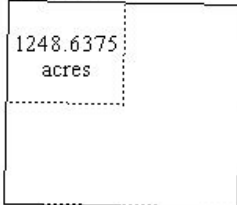
Main Pass
Block 74



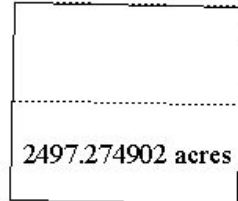
Main Pass
Block 91



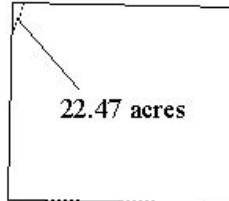
Main Pass
Block 92



Main Pass
Block 127



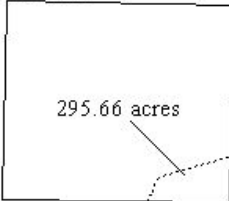
Main Pass
Block 152



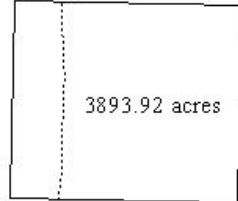
Breton Sound
Block 24



Breton Sound
Block 44



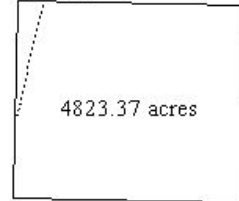
Chandeleur
Block 5



Chandeleur
Block 8

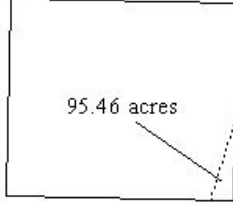


Chandeleur
Block 14

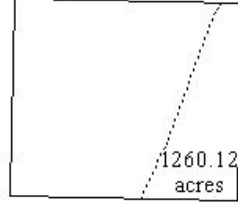


CENTRAL GULF OF MEXICO LEASE SALE 194
 Split Block Diagrams (continued)

Chandeleur
Block 15



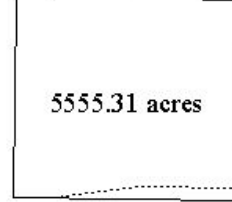
Chandeleur
Block 16



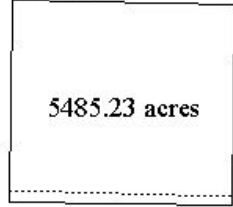
Sabine Pass
Block 5



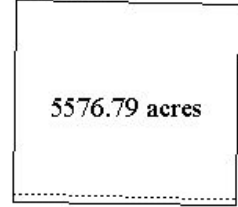
Amery Terrace
Block 162



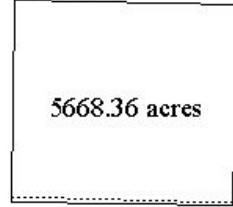
Amery Terrace
Block 163



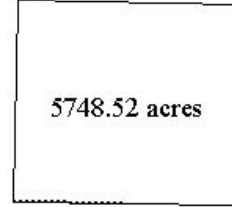
Amery Terrace
Block 164



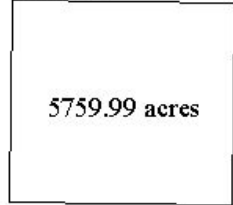
Amery Terrace
Block 165



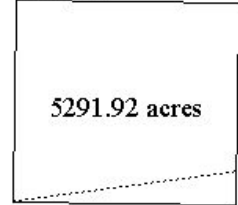
Amery Terrace
Block 166



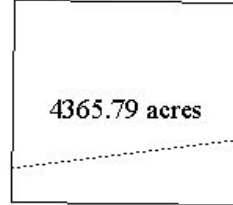
Amery Terrace
Block 199



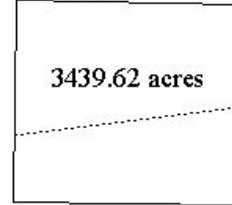
Amery Terrace
Block 200



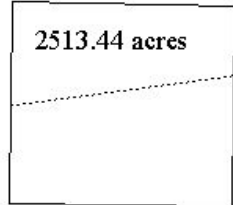
Amery Terrace
Block 201



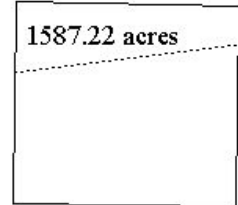
Amery Terrace
Block 202



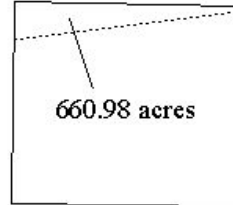
Amery Terrace
Block 203



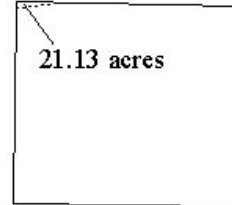
Amery Terrace
Block 204



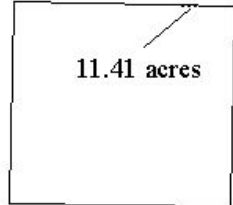
Amery Terrace
Block 205



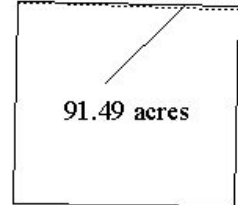
Amery Terrace
Block 206



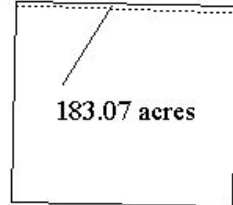
Amery Terrace
Block 210



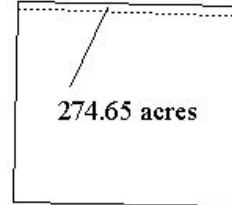
Amery Terrace
Block 211



Amery Terrace
Block 212

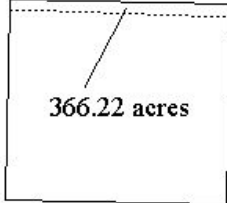


Amery Terrace
Block 213

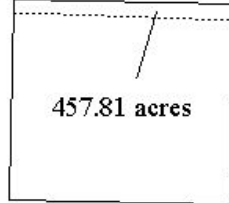


CENTRAL GULF OF MEXICO LEASE SALE 194
Split Block Diagrams (continued)

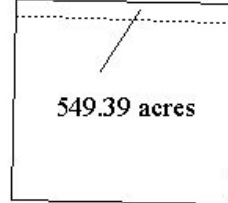
Amery Terrace
Block 214



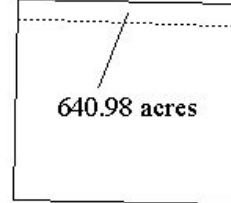
Amery Terrace
Block 215



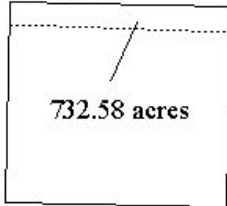
Amery Terrace
Block 216



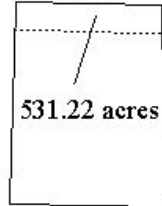
Amery Terrace
Block 217



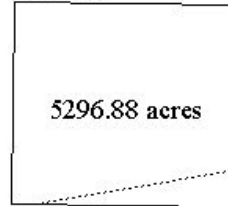
Amery Terrace
Block 218



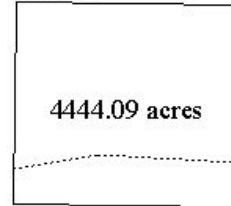
Amery Terrace
Block 219



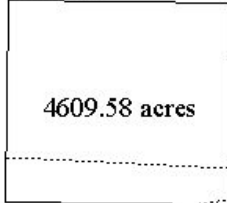
Amery Terrace
Block 235



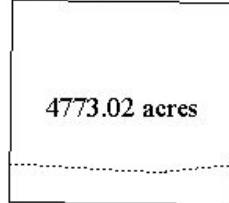
Amery Terrace
Block 236



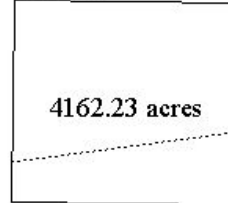
Amery Terrace
Block 237



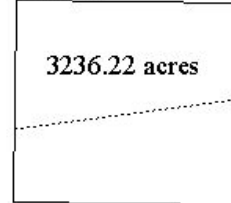
Amery Terrace
Block 238



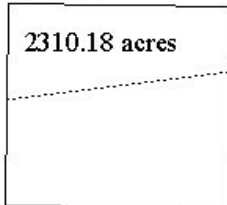
Amery Terrace
Block 239



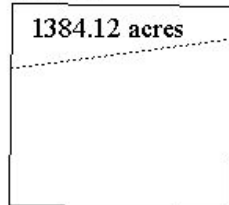
Amery Terrace
Block 240



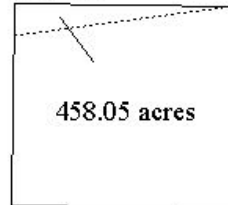
Amery Terrace
Block 241



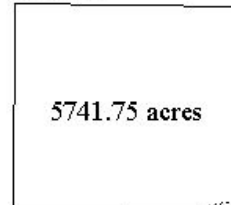
Amery Terrace
Block 242



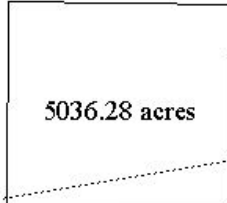
Amery Terrace
Block 243



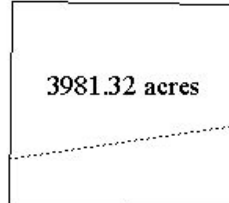
Amery Terrace
Block 273



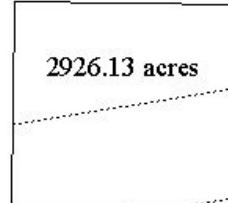
Amery Terrace
Block 274



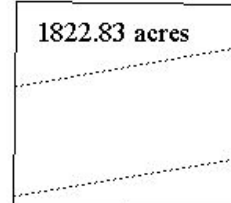
Amery Terrace
Block 275



Amery Terrace
Block 276

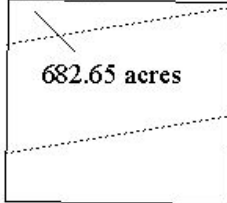


Amery Terrace
Block 277

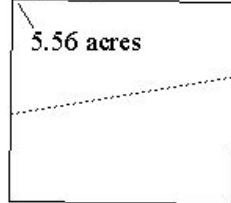


CENTRAL GULF OF MEXICO LEASE SALE 194
 Split Block Diagrams (*continued*)

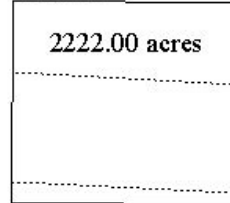
Amery Terrace
Block 278



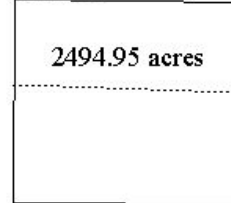
Amery Terrace
Block 279



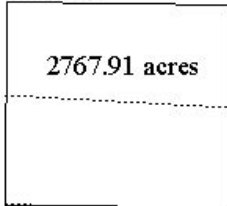
Amery Terrace
Block 309



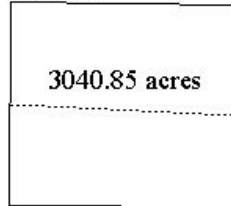
Amery Terrace
Block 310



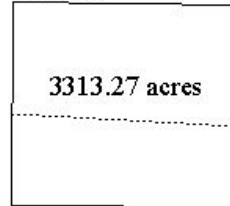
Amery Terrace
Block 311



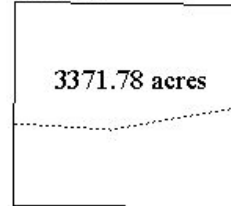
Amery Terrace
Block 312



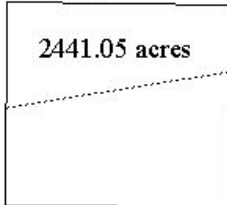
Amery Terrace
Block 313



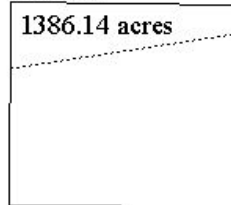
Amery Terrace
Block 314



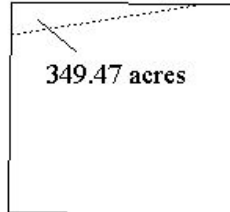
Amery Terrace
Block 315



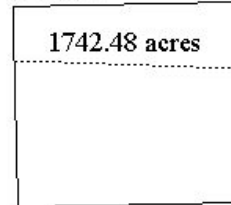
Amery Terrace
Block 316



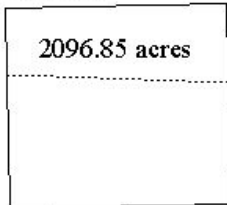
Amery Terrace
Block 317



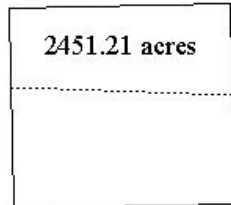
Lund South
Block 177



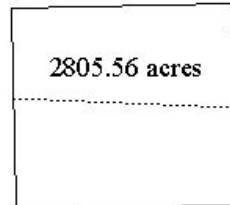
Lund South
Block 178



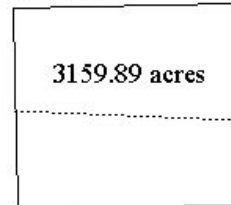
Lund South
Block 179



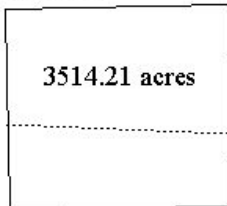
Lund South
Block 180



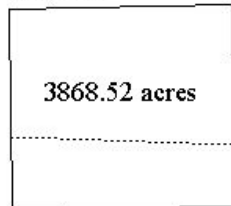
Lund South
Block 181



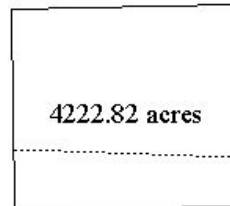
Lund South
Block 182



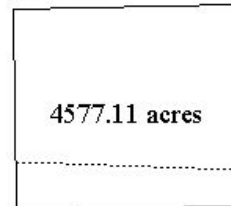
Lund South
Block 183



Lund South
Block 184

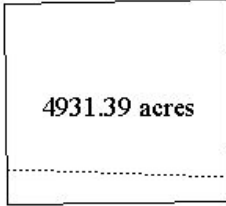


Lund South
Block 185

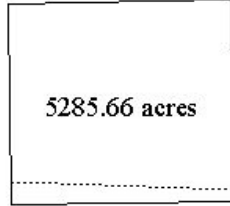


CENTRAL GULF OF MEXICO LEASE SALE 194
Split Block Diagrams (continued)

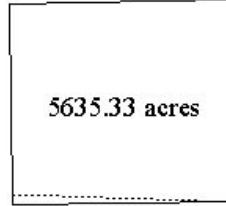
Lund South
Block 186



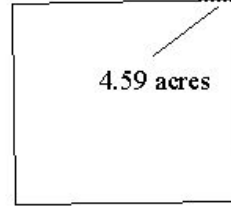
Lund South
Block 187



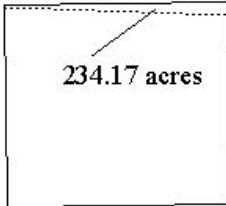
Lund South
Block 188



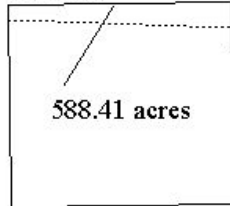
Lund South
Block 232



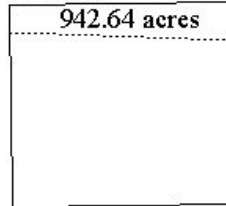
Lund South
Block 233



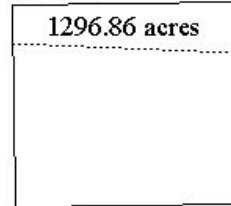
Lund South
Block 234



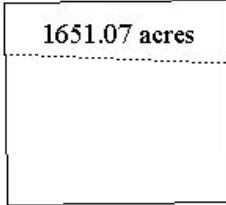
Lund South
Block 235



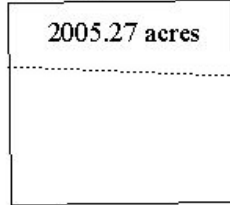
Lund South
Block 236



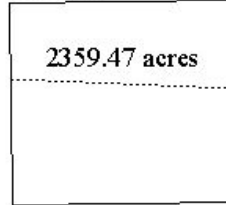
Lund South
Block 237



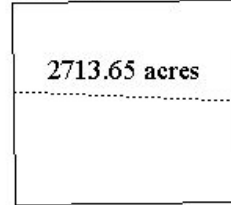
Lund South
Block 238



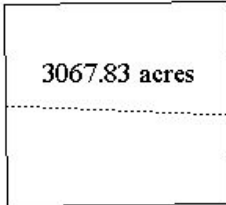
Lund South
Block 239



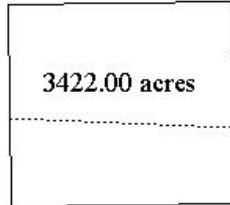
Lund South
Block 240



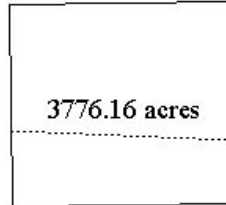
Lund South
Block 241



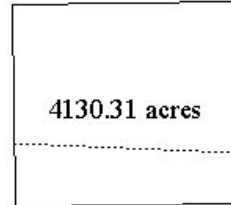
Lund South
Block 242



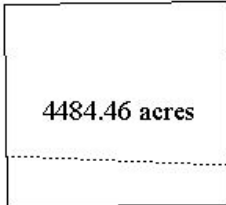
Lund South
Block 243



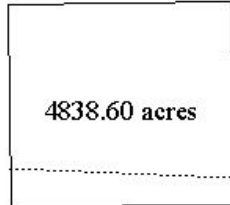
Lund South
Block 244



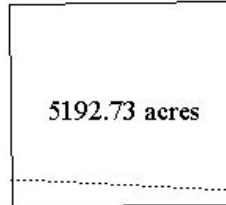
Lund South
Block 245



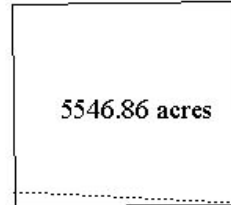
Lund South
Block 246



Lund South
Block 247

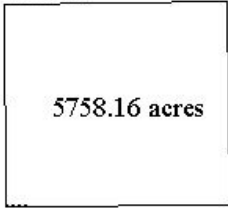


Lund South
Block 248

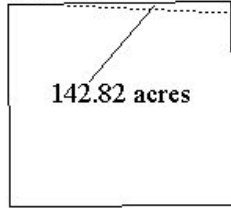


CENTRAL GULF OF MEXICO LEASE SALE 194
 Split Block Diagrams (continued)

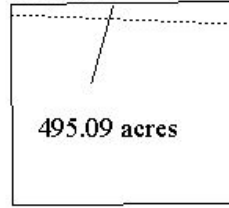
Lund South
Block 249



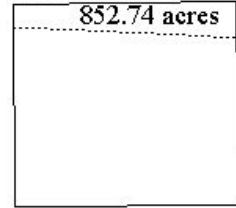
Lund South
Block 293



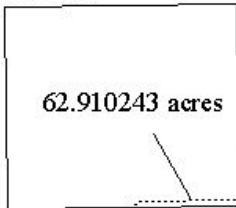
Lund South
Block 294



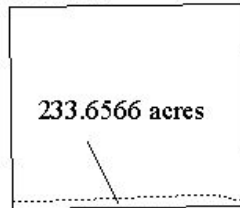
Lund South
Block 295



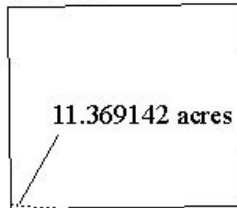
Mobile
Block 765



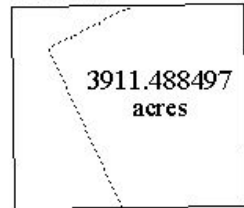
Mobile
Block 766



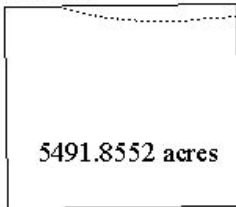
Mobile
Block 767



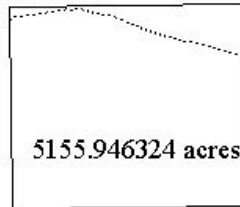
Mobile
Block 809



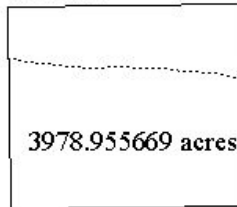
Mobile
Block 811



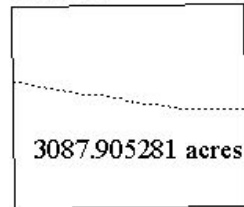
Mobile
Block 812



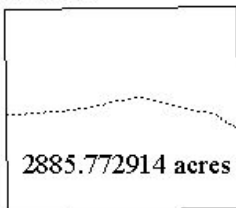
Mobile
Block 813



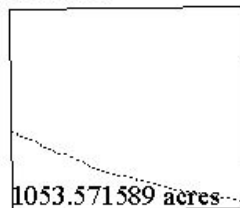
Mobile
Block 814



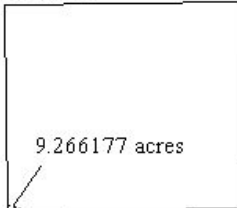
Mobile
Block 815



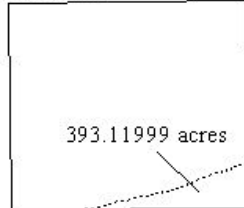
Mobile
Block 816



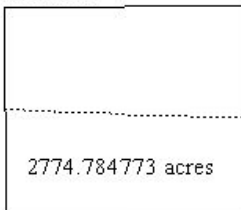
Mobile
Block 817



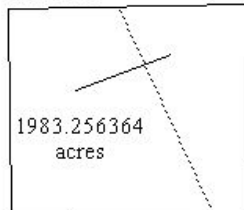
Mobile
Block 818



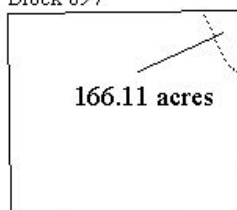
Mobile
Block 829



Mobile
Block 853



Mobile
Block 897



Mobile
Block 898

