



U.S. Department of the Interior
Minerals Management Service
Gulf of Mexico OCS Region

Leasing Activities Information

CENTRAL GULF OF MEXICO LEASE SALE 198 March 15, 2006

UNLEASED SPLIT BLOCKS and AVAILABLE UNLEASED ACREAGE OF BLOCKS WITH ALIQUOTS AND IRREGULAR PORTIONS UNDER LEASE OR DEFERRED

For Oil and Gas Leases in the Gulf of Mexico

—MMS—



**UNLEASED SPLIT BLOCKS
and
AVAILABLE UNLEASED ACREAGE OF BLOCKS
WITH
ALIQUOTS AND IRREGULAR PORTIONS
UNDER LEASE OR DEFERRED**

INSTRUCTION TO BIDDERS

This package identifies the unleased Federal acreage along the offshore Louisiana, Mississippi, and Alabama Federal boundary and available unleased acreages of blocks with portions under lease or deferred. If a block is bid upon, all available unleased acreage within that block must be bid upon.

Method of bidding – As described in the final Notice of Lease Sale 198.

Split and irregular blocks leased as a result of the sale will be legally described by using X and Y coordinates. Any specific questions pertaining to the unleased split blocks, or those with portions under lease, should be referred to Ms. Pat Bryars (504) 736-2763.

CENTRAL GULF OF MEXICO LEASE SALE 198
 Blocks list by map area and block number sequence

LA1 West Cameron

26
 27
 29
 31
 181

LA2 East Cameron

3
 8
 10
 14
 15
 20
 21
 22
 194

LA3 Vermilion

12
 15
 16
 18
 19
 20
 29
 34
 39
 57
 104
 217
 226

**LA3D South Marsh Island
 North**

221
 234
 235
 241

LA4 Eugene Island

9
 11
 12
 12A
 18
 19
 21
 25
 33
 34
 35
 90
 93
 116
 214
 255

LA4A Eugene Island South

301
 307

LA5 Ship Shoal

2
 8
 9
 10
 13
 14
 16
 24
 25
 49
 225

LA6 South Timbalier

9
 10
 16
 19

LA6C Bay Marchand

5

LA7 Grand Isle

15
 25

LA8 West Delta

16
 17
 25
 28
 81

LA8A West Delta South

111

LA9 South Pass

17
 18
 19
 31
 35
 52
 57

LA9A South Pass S&E

66
 78

LA10 Main Pass

6
 7
 43
 55
 57
 58
 91
 127
 152

LA10B Breton Sound

24
44

LA11 Chandeleur

8
15
16

LA12 Sabine Pass

5
9

NG15-09 Amery Terrace

162
163
164
165
166
199
200
201
202
203
204
205
206
210
211
212
213
214
215
216
217
218
219
235
236
237
238
239

**NG15-09 Amery Terrace
(continued)**

240
241
242
243
277
278
279
309
310
311
312
313
314
315
316

NG16-07 Lund South

177
178
179
180
181
182
183
184
185
186
187
188
232
233
234
235
236
237
238
239
240
241
242

**NG16-07 Lund South
(continued)**

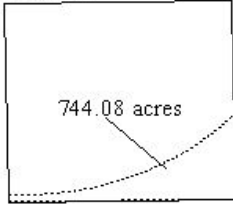
243
244
245
246
247
248
249
293
294
295

NH16-04 Mobile

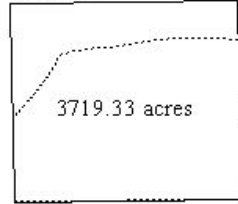
765
766
767
809
813
814
816
817
818
820
829
830
853
897
898

CENTRAL GULF OF MEXICO LEASE SALE 198
 Split Block Diagrams

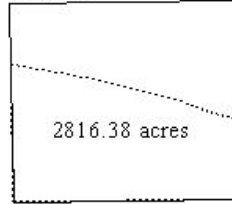
West Cameron
Block 26



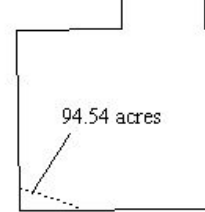
West Cameron
Block 27



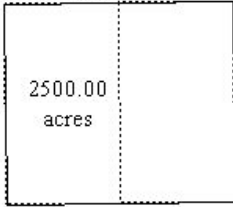
West Cameron
Block 29



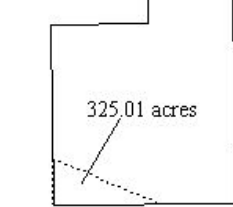
West Cameron
Block 31



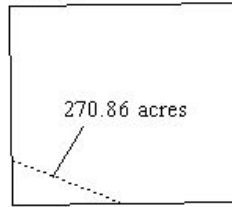
West Cameron
Block 181



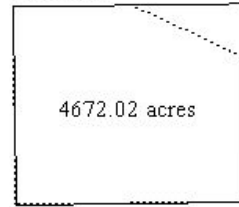
East Cameron
Block 3



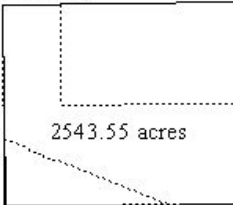
East Cameron
Block 8



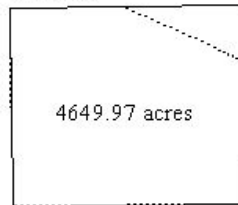
East Cameron
Block 10



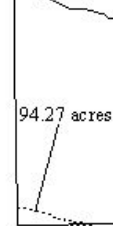
East Cameron
Block 14



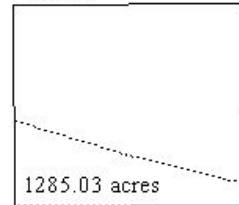
East Cameron
Block 15



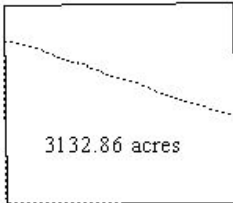
East Cameron
Block 20



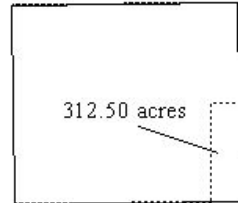
East Cameron
Block 21



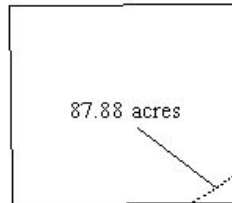
East Cameron
Block 22



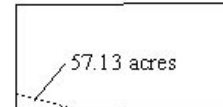
East Cameron
Block 194



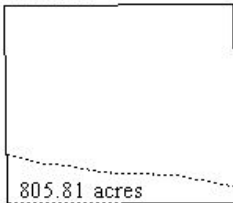
Vermilion
Block 12



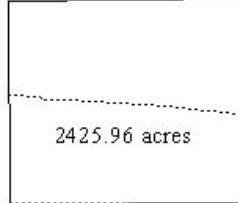
Vermilion
Block 15



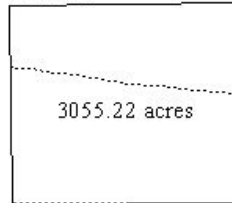
Vermilion
Block 16



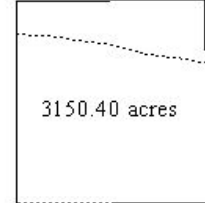
Vermilion
Block 18



Vermilion
Block 19

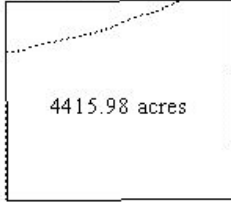


Vermilion
Block 20

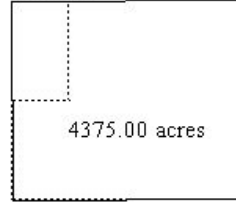


CENTRAL GULF OF MEXICO LEASE SALE 198
 Split Block Diagrams (continued)

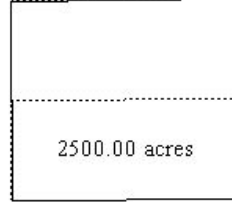
Vermilion
Block 29



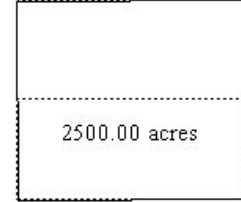
Vermilion
Block 34



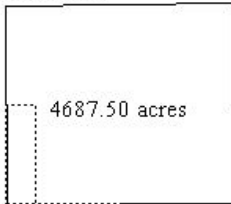
Vermilion
Block 39



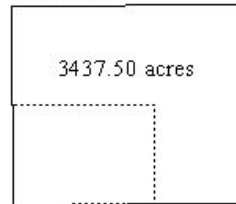
Vermilion
Block 57



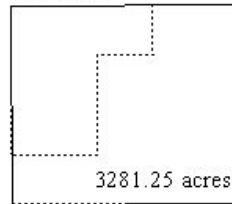
Vermilion
Block 104



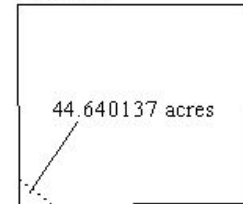
Vermilion
Block 217



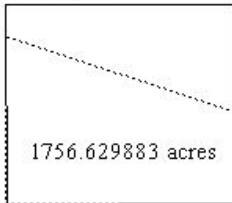
Vermilion
Block 226



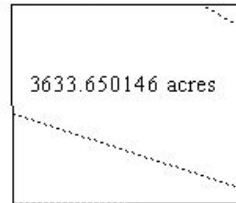
South Marsh Island North
Block 221



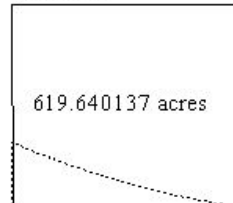
South Marsh Island North
Block 234



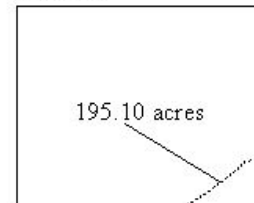
South Marsh Island North
Block 235



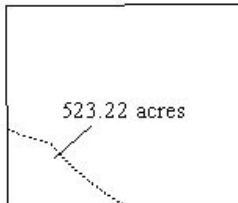
South Marsh Island North
Block 241



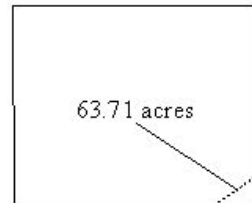
Eugene Island
Block 9



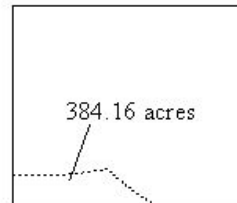
Eugene Island
Block 11



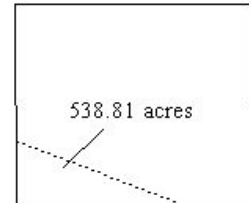
Eugene Island
Block 12



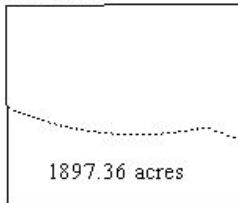
Eugene Island
Block 12A



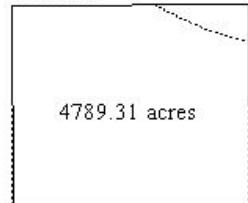
Eugene Island
Block 18



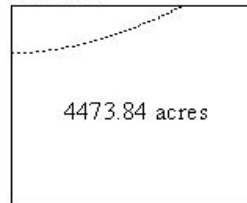
Eugene Island
Block 19



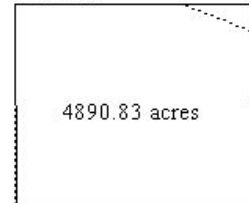
Eugene Island
Block 21



Eugene Island
Block 25

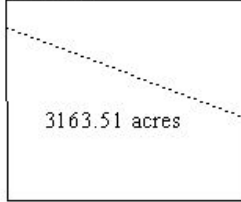


Eugene Island
Block 33

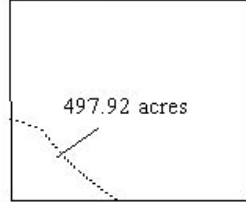


CENTRAL GULF OF MEXICO LEASE SALE 198
 Split Block Diagrams (continued)

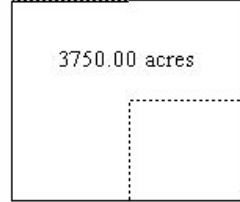
Eugene Island
Block 34



Eugene Island
Block 35



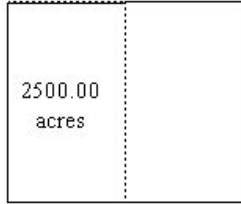
Eugene Island
Block 90



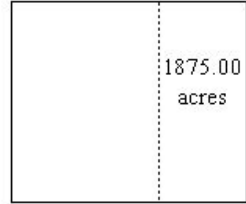
Eugene Island
Block 93



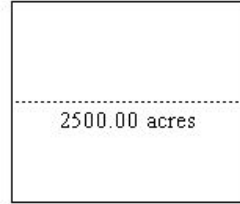
Eugene Island
Block 116



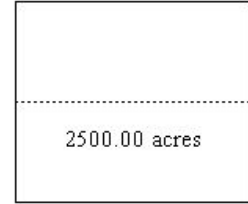
Eugene Island
Block 214



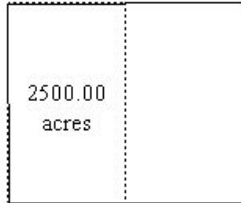
Eugene Island
Block 255



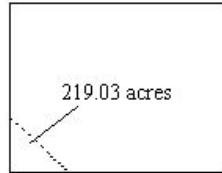
Eugene Island South
Block 301



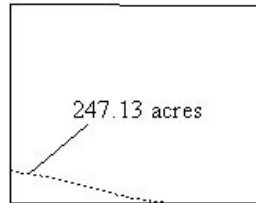
Eugene Island South
Block 307



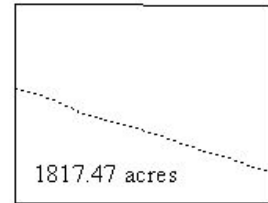
Ship Shoal
Block 2



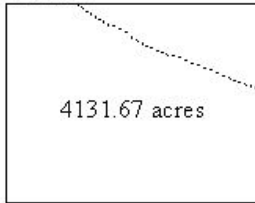
Ship Shoal
Block 8



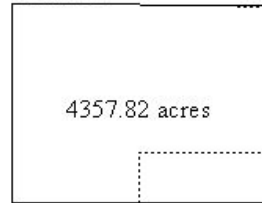
Ship Shoal
Block 9



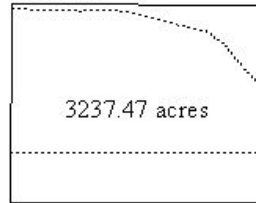
Ship Shoal
Block 10



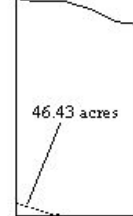
Ship Shoal
Block 13



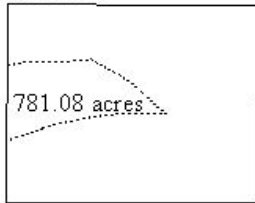
Ship Shoal
Block 14



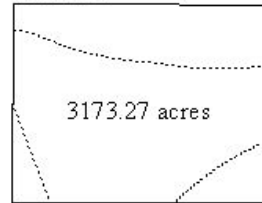
Ship Shoal
Block 16



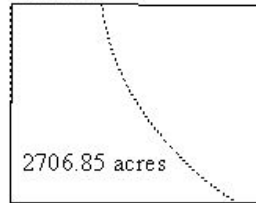
Ship Shoal
Block 24



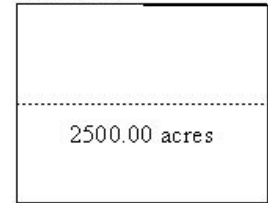
Ship Shoal
Block 25



Ship Shoal
Block 49

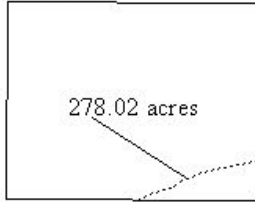


Ship Shoal
Block 225

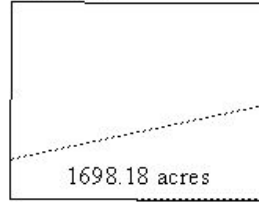


CENTRAL GULF OF MEXICO LEASE SALE 198
 Split Block Diagrams (continued)

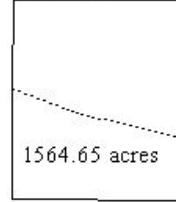
South Timbalier
Block 9



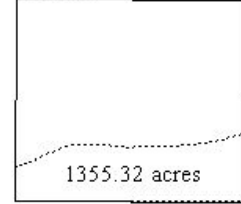
South Timbalier
Block 10



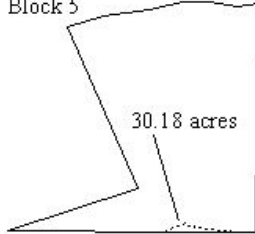
South Timbalier
Block 16



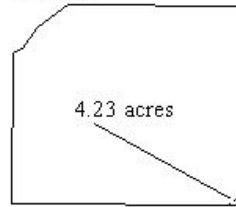
South Timbalier
Block 19



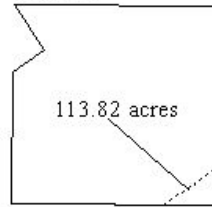
Bay Marchand
Block 5



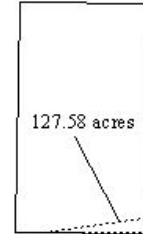
Grand Isle
Block 15



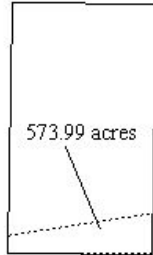
Grand Isle
Block 25



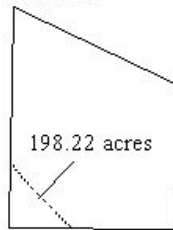
West Delta
Block 16



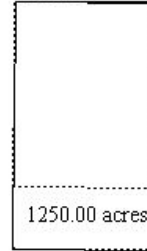
West Delta
Block 17



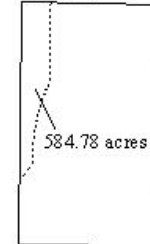
West Delta
Block 25



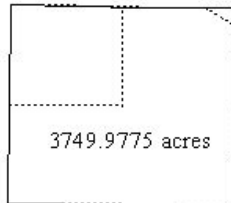
West Delta
Block 28



West Delta
Block 31



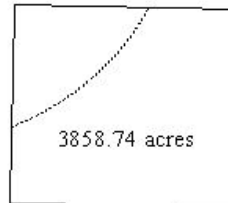
West Delta South
Block 111



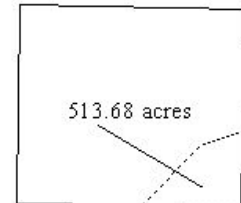
South Pass
Block 17



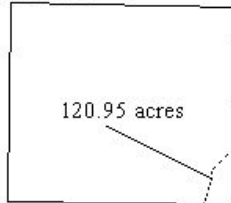
South Pass
Block 18



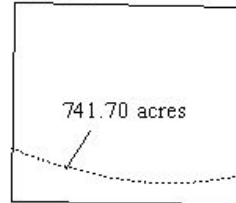
South Pass
Block 19



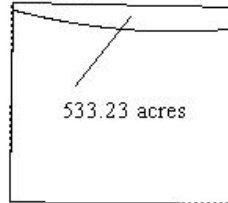
South Pass
Block 31



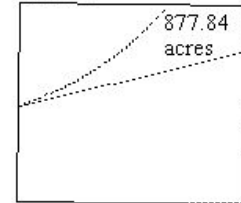
South Pass
Block 35



South Pass
Block 52

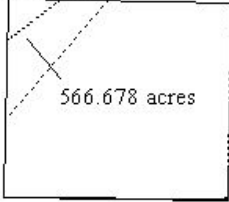


South Pass
Block 57

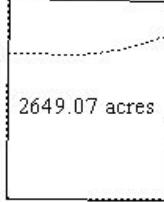


CENTRAL GULF OF MEXICO LEASE SALE 198
 Split Block Diagrams (continued)

South Pass S&E
Block 66



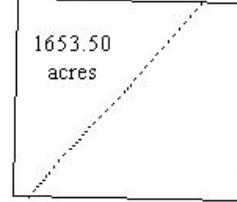
South Pass S&E
Block 78



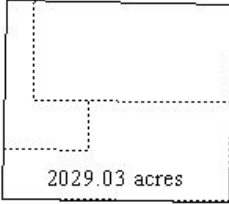
Main Pass
Block 6



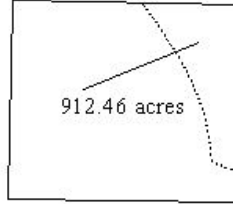
Main Pass
Block 7



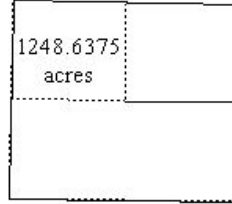
Main Pass
Block 43



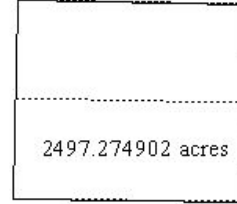
Main Pass
Block 55



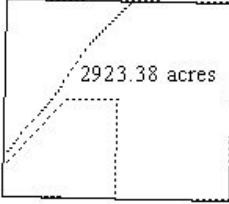
Main Pass
Block 57



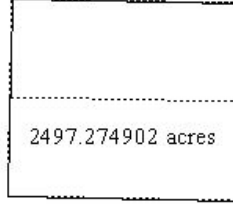
Main Pass
Block 58



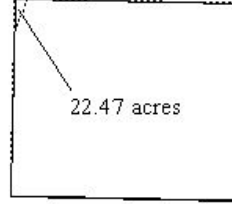
Main Pass
Block 91



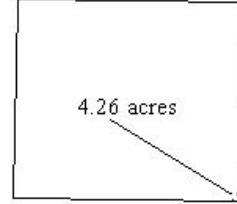
Main Pass
Block 127



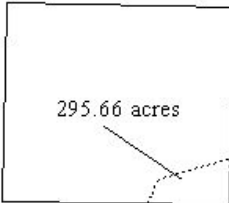
Main Pass
Block 152



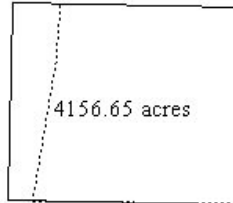
Breton Sound
Block 24



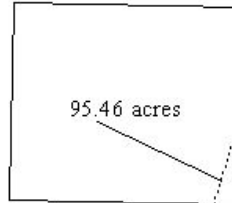
Breton Sound
Block 44



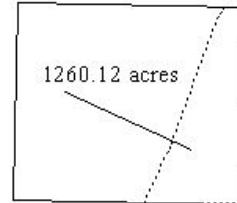
Chandeleur
Block 8



Chandeleur
Block 15



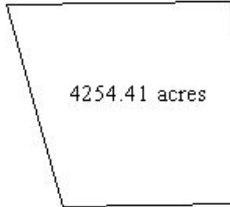
Chandeleur
Block 16



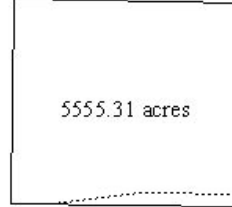
Sabine Pass
Block 5



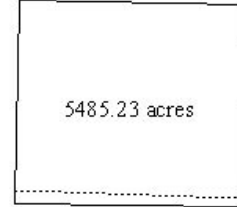
Sabine Pass
Block 9



Amery Terrace
Block 162

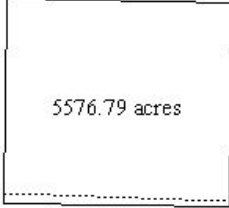


Amery Terrace
Block 163

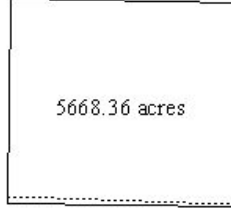


CENTRAL GULF OF MEXICO LEASE SALE 198
Split Block Diagrams (continued)

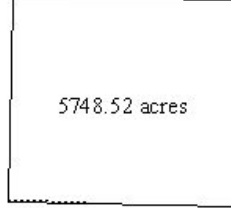
Amery Terrace
Block 164



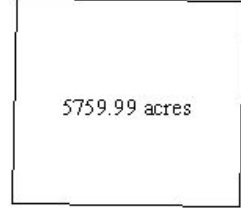
Amery Terrace
Block 165



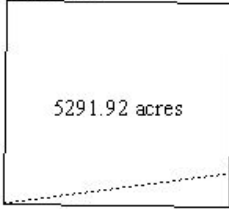
Amery Terrace
Block 166



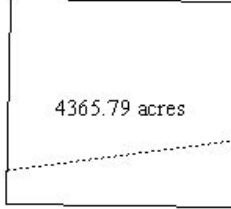
Amery Terrace
Block 199



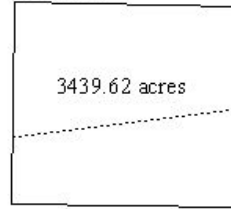
Amery Terrace
Block 200



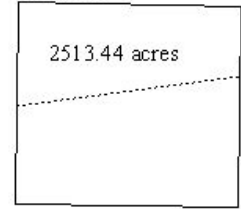
Amery Terrace
Block 201



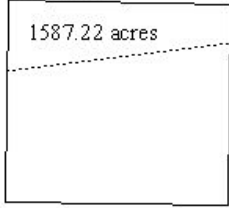
Amery Terrace
Block 202



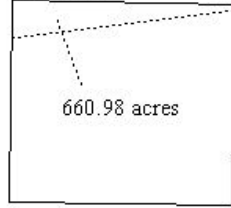
Amery Terrace
Block 203



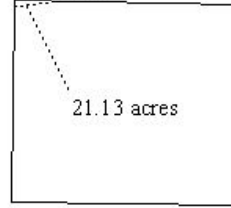
Amery Terrace
Block 204



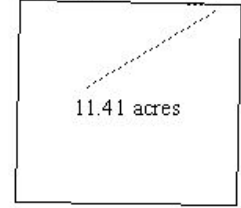
Amery Terrace
Block 205



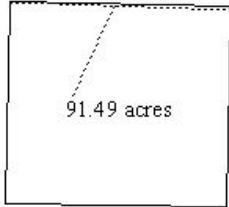
Amery Terrace
Block 206



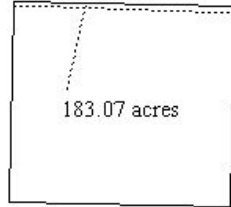
Amery Terrace
Block 210



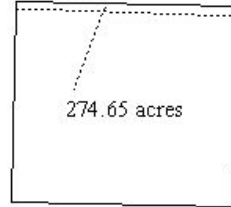
Amery Terrace
Block 211



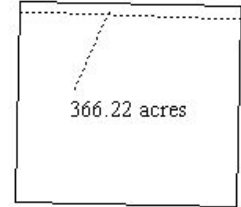
Amery Terrace
Block 212



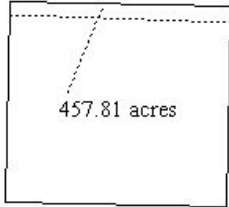
Amery Terrace
Block 213



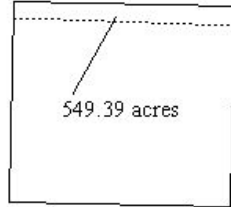
Amery Terrace
Block 214



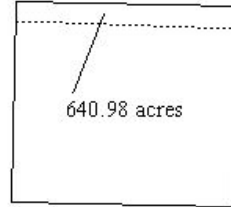
Amery Terrace
Block 215



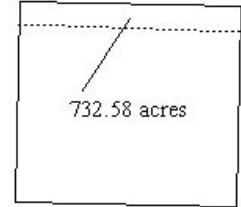
Amery Terrace
Block 216



Amery Terrace
Block 217



Amery Terrace
Block 218



CENTRAL GULF OF MEXICO LEASE SALE 198
 Split Block Diagrams (continued)

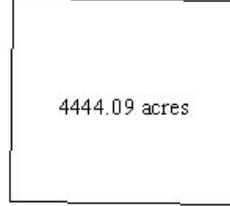
Amery Terrace
Block 219



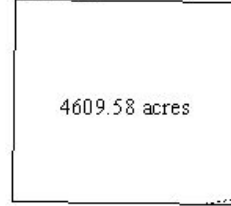
Amery Terrace
Block 235



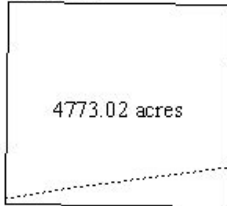
Amery Terrace
Block 236



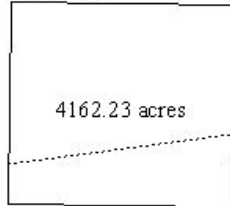
Amery Terrace
Block 237



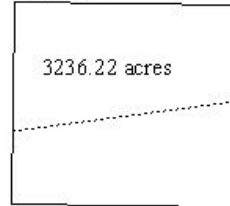
Amery Terrace
Block 238



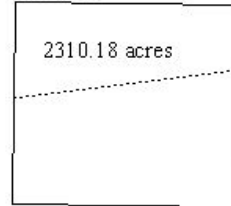
Amery Terrace
Block 239



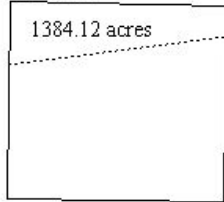
Amery Terrace
Block 240



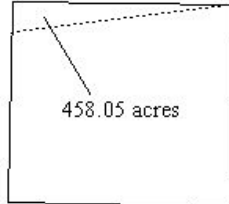
Amery Terrace
Block 241



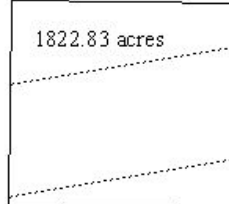
Amery Terrace
Block 242



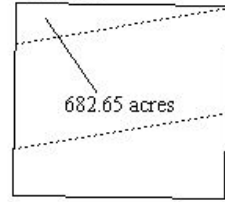
Amery Terrace
Block 243



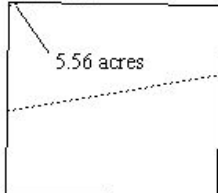
Amery Terrace
Block 277



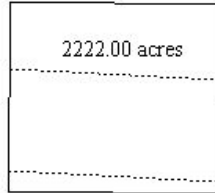
Amery Terrace
Block 278



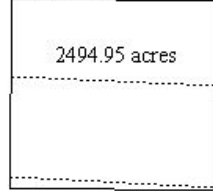
Amery Terrace
Block 279



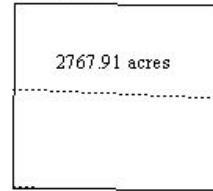
Amery Terrace
Block 309



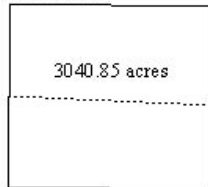
Amery Terrace
Block 310



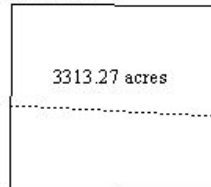
Amery Terrace
Block 311



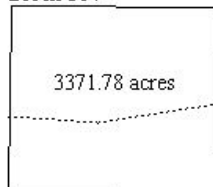
Amery Terrace
Block 312



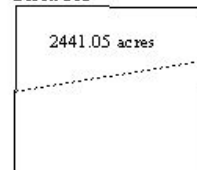
Amery Terrace
Block 313



Amery Terrace
Block 314

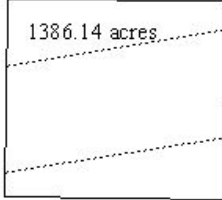


Amery Terrace
Block 315

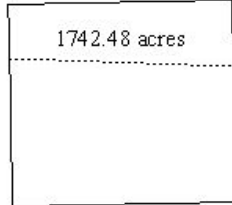


CENTRAL GULF OF MEXICO LEASE SALE 198
 Split Block Diagrams (continued)

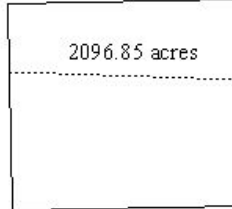
Amery Terrace
Block 316



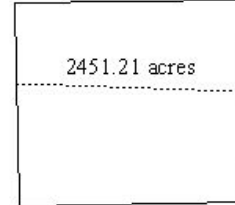
Lund South
Block 177



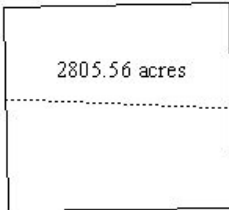
Lund South
Block 178



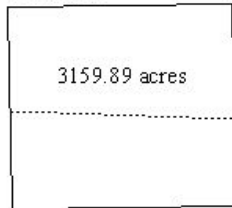
Lund South
Block 179



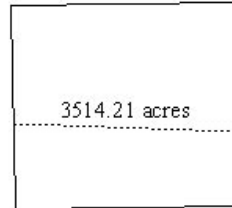
Lund South
Block 180



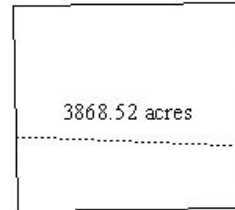
Lund South
Block 181



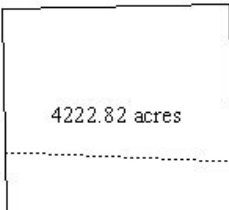
Lund South
Block 182



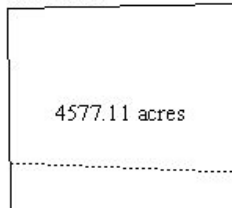
Lund South
Block 183



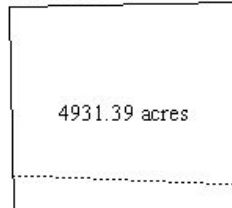
Lund South
Block 184



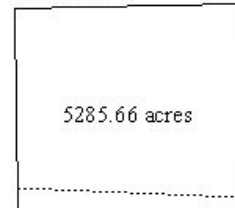
Lund South
Block 185



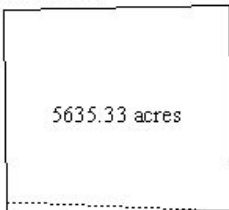
Lund South
Block 186



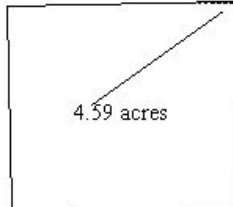
Lund South
Block 187



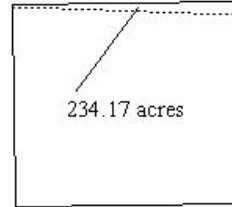
Lund South
Block 188



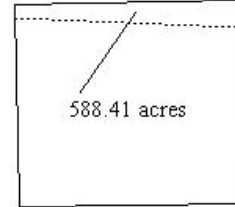
Lund South
Block 232



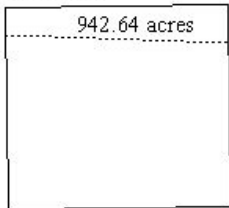
Lund South
Block 233



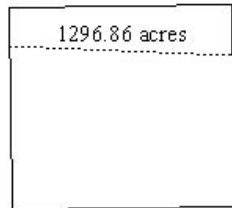
Lund South
Block 234



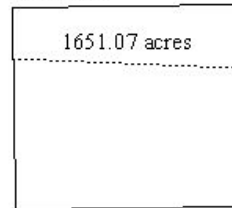
Lund South
Block 235



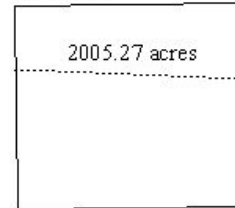
Lund South
Block 236



Lund South
Block 237

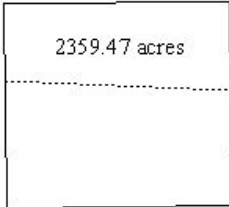


Lund South
Block 238

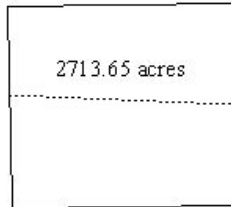


CENTRAL GULF OF MEXICO LEASE SALE 198
 Split Block Diagrams (continued)

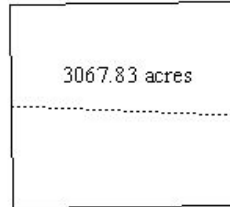
Lund South
Block 239



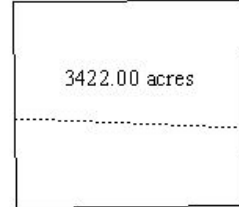
Lund South
Block 240



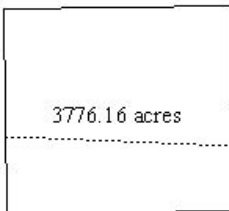
Lund South
Block 241



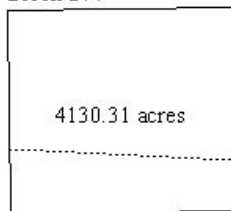
Lund South
Block 242



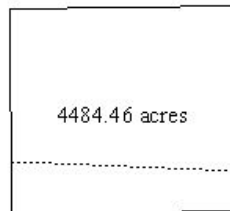
Lund South
Block 243



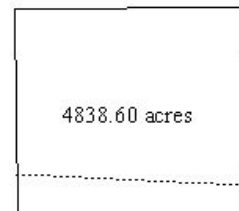
Lund South
Block 244



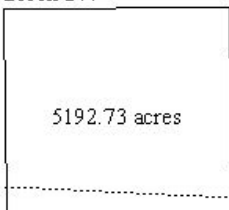
Lund South
Block 245



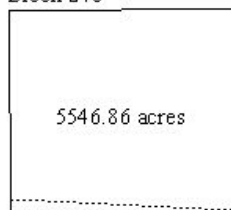
Lund South
Block 246



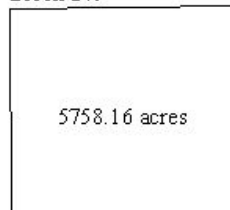
Lund South
Block 247



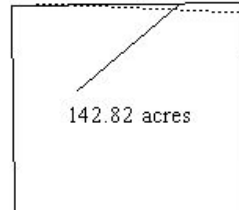
Lund South
Block 248



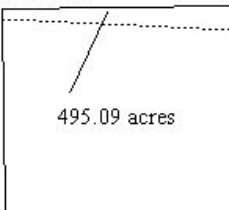
Lund South
Block 249



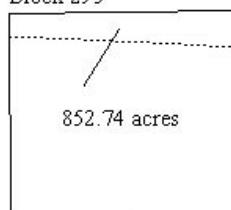
Lund South
Block 293



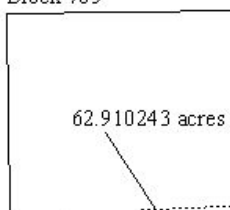
Lund South
Block 294



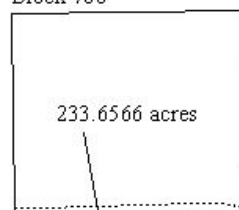
Lund South
Block 295



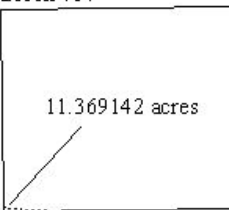
Mobile
Block 765



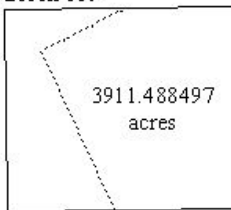
Mobile
Block 766



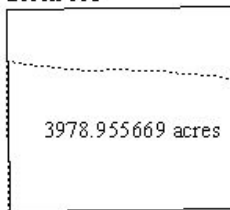
Mobile
Block 767



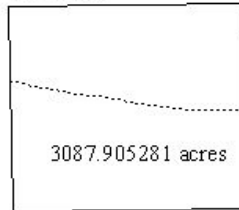
Mobile
Block 809



Mobile
Block 813

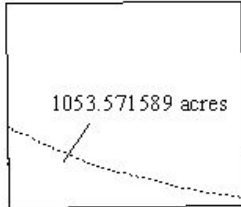


Mobile
Block 814

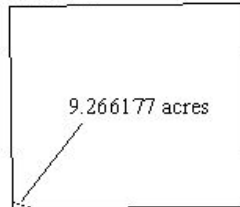


CENTRAL GULF OF MEXICO LEASE SALE 198
Split Block Diagrams (*continued*)

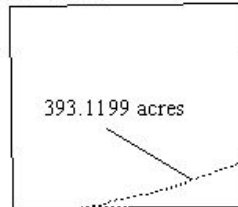
Mobile
Block 816



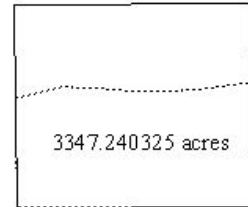
Mobile
Block 817



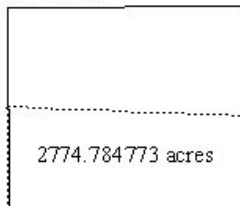
Mobile
Block 818



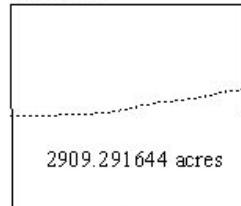
Mobile
Block 820



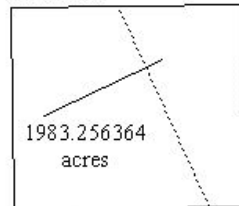
Mobile
Block 829



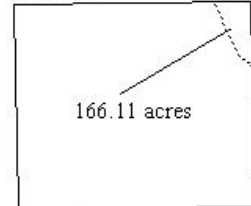
Mobile
Block 830



Mobile
Block 853



Mobile
Block 897



Mobile
Block 898

