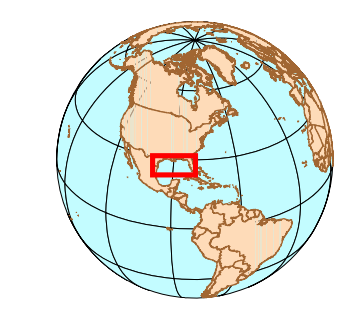
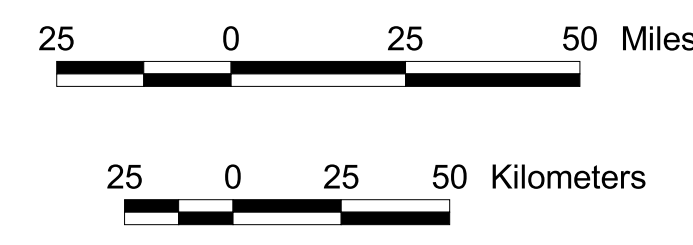


MMS United States Department of the Interior
Minerals Management Service
Gulf of Mexico OCS Region

Active Leases and CGOM Sale 198 March 2006

- Bids received in CGOM Sale 198
- Active leases issued in 2005
- CGOM Sale 194, WGOM Sale 196,
and EGOM Sale 197
- Active leases issued prior to 2005
- Eastern Planning Area Sale Area boundary
- Unleased blocks currently deferred
or unavailable for leasing
- Major Metropolitan areas
- Royalty Relief and Lease Term lines
- Planning Area boundary
- Selected cities and towns



Scale: 1:1743642
Projection: Albers Equal-Area Conic
Spheroid: Clarke 1866
Central Meridian: -89.17433
Reference Latitude: 27.03441
Standard Parallel 1: 24.89332
Standard Parallel 2: 29.17550

Water Depth (meters)