



U.S. Department of the Interior
Minerals Management Service
Gulf of Mexico OCS Region

Leasing Activities Information

EASTERN GULF OF MEXICO LEASE SALE 224 MARCH 19, 2008

UNLEASED SPLIT BLOCKS AND AVAILABLE UNLEASED ACREAGE OF BLOCKS WITH ALIQUOTS AND IRREGULAR PORTIONS UNDER LEASE OR DEFERRED

For Oil and Gas Leases in the Gulf of Mexico

— MMS —



**UNLEASED SPLIT BLOCKS
AND
AVAILABLE UNLEASED ACREAGE OF BLOCKS
WITH
ALIQUOTS AND IRREGULAR PORTIONS
UNDER LEASE OR DEFERRED**

INSTRUCTION TO BIDDERS

This package identifies the unleased Federal acreage and available unleased acreages of blocks with portions under lease or deferred. If a block is bid upon, all available unleased Federal acreage within that block must be bid upon.

Method of bidding – As described in the final Notice of Lease Sale 224.

Split and irregular blocks leased as a result of the sale will be legally described by using X and Y coordinates. Any specific questions pertaining to the unleased split blocks, or those with portions under lease, should be referred to Ms. Pat Bryars (504) 736-2763.

EASTERN GULF OF MEXICO LEASE SALE 224
Blocks are listed in order of Protraction and Block Number

NG16-02 Lloyd Ridge

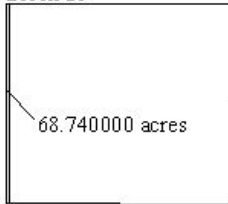
26
70
114
158
202
246
290
334
378
422
466
510

NH16-11 De Soto Canyon

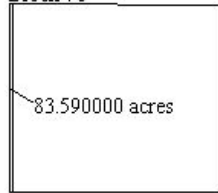
459
460
504
505
549
550
594
595
639
640
684
685
729
773
817
818
862
906
950
994

EASTERN GULF OF MEXICO LEASE SALE 224
Block Diagrams

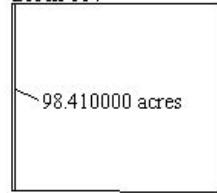
Lloyd Ridge
Block 26



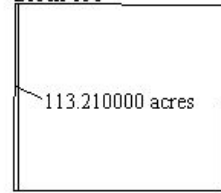
Lloyd Ridge
Block 70



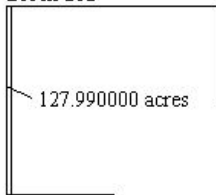
Lloyd Ridge
Block 114



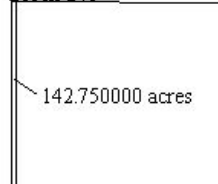
Lloyd Ridge
Block 158



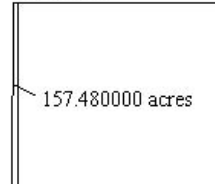
Lloyd Ridge
Block 202



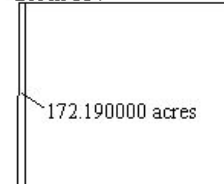
Lloyd Ridge
Block 246



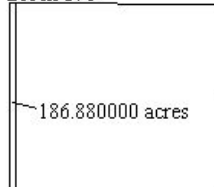
Lloyd Ridge
Block 290



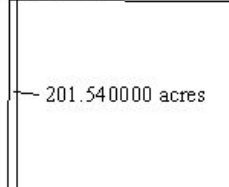
Lloyd Ridge
Block 334



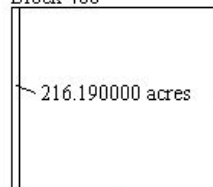
Lloyd Ridge
Block 378



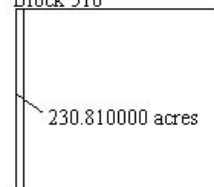
Lloyd Ridge
Block 422



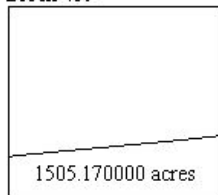
Lloyd Ridge
Block 466



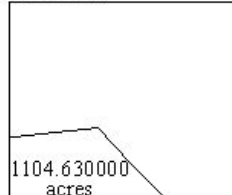
Lloyd Ridge
Block 510



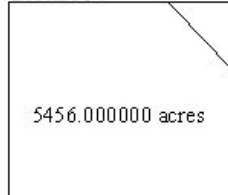
De Soto Canyon
Block 459



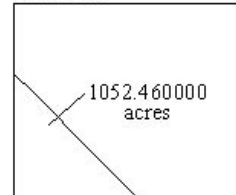
De Soto Canyon
Block 460



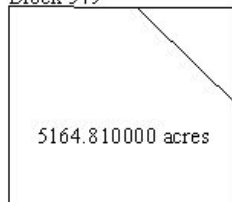
De Soto Canyon
Block 504



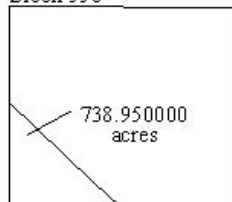
De Soto Canyon
Block 505



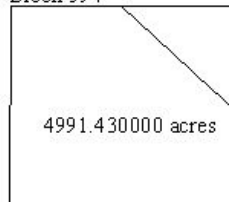
De Soto Canyon
Block 549



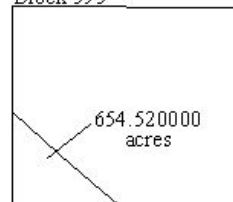
De Soto Canyon
Block 550



De Soto Canyon
Block 594

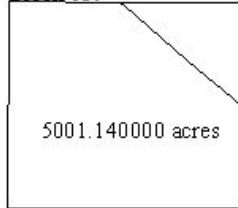


De Soto Canyon
Block 595

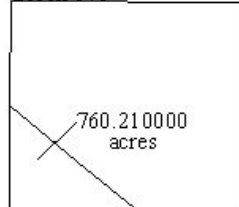


EASTERN GULF OF MEXICO LEASE SALE 224
Block Diagrams
(continued)

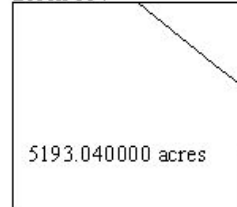
De Soto Canyon
Block 639



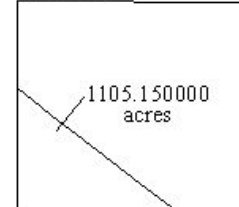
De Soto Canyon
Block 640



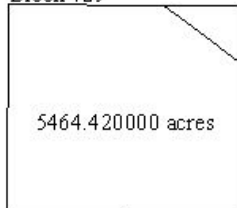
De Soto Canyon
Block 684



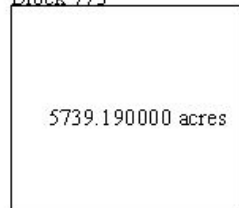
De Soto Canyon
Block 685



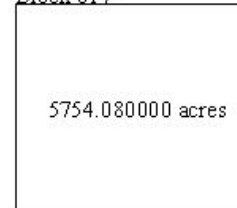
De Soto Canyon
Block 729



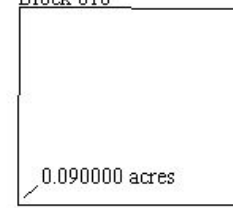
De Soto Canyon
Block 773



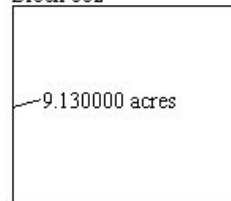
De Soto Canyon
Block 817



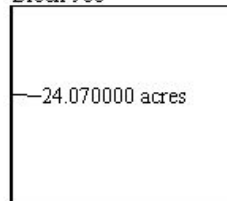
De Soto Canyon
Block 818



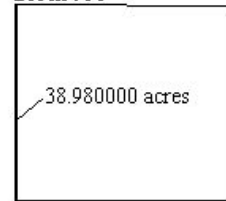
De Soto Canyon
Block 862



De Soto Canyon
Block 906



De Soto Canyon
Block 950



De Soto Canyon
Block 994

