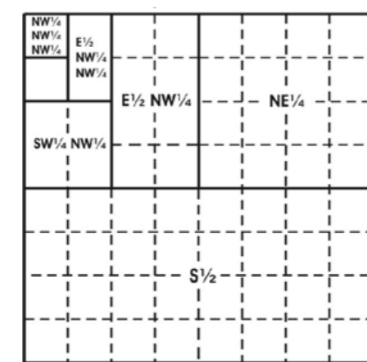


The boundaries of the regular blocks are 4,800 international meters on a side and contain 2,304 hectares. The regular boundaries are defined in terms of X and Y coordinates of the Universal Transverse Mercator Grid System based on the Geodetic Reference System (GRS) 1980 Ellipsoid.

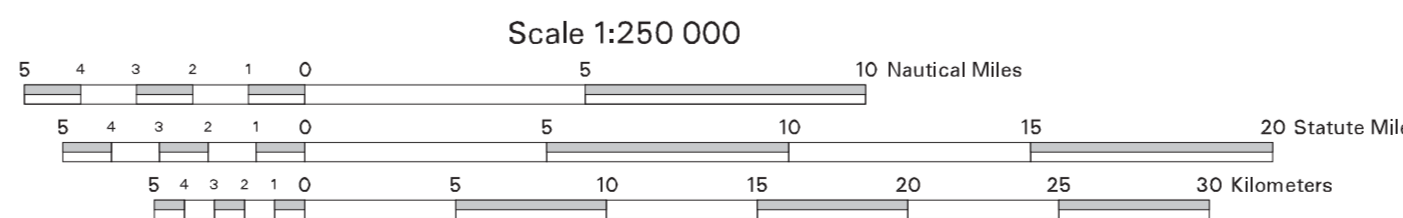
This revised diagram supersedes protraction diagram HEEZEN PLATEAU NJ19-04, approved 23-AUG-1996.

Areas and dimensions of the irregular blocks along the zone boundary are as indicated.



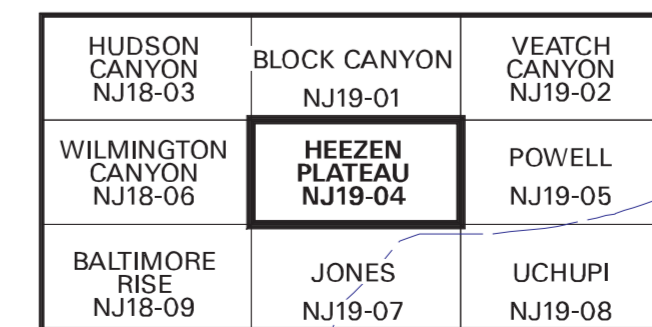
Subdivision of Blocks on the Outer Continental Shelf

UNITED STATES DEPARTMENT OF THE INTERIOR  
BUREAU OF OCEAN ENERGY MANAGEMENT, REGULATION AND ENFORCEMENT  
OUTER CONTINENTAL SHELF OFFICIAL PROTRACTION DIAGRAM



NORTH AMERICAN DATUM OF 1983  
(WORLD GEODETIC SYSTEM OF 1984)

LOCATION DIAGRAM



This diagram is prepared in accordance with 30 CFR 256.8

For the Director  
*Steph. S. Foguel*  
Chief, Leasing Division, Mapping and Boundary Branch  
Hemdon, Virginia Date 01-APR-2008

Revised