

The boundaries of the regular blocks are 4,800 international meters on a side and contain 2,304 hectares. The regular boundaries are defined in terms of X and Y coordinates of the Universal Transverse Mercator Grid System based on the Geodetic Reference System (GRS) 1980 Ellipsoid.

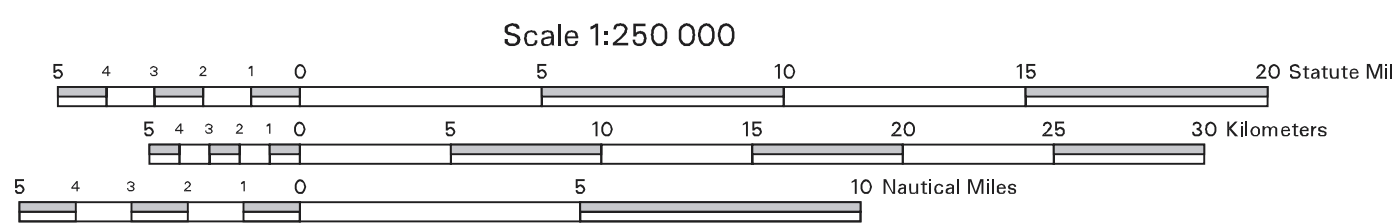
The coordinate values appearing on this document were derived using NAD 83/WGS 84.

The areas of the fractional blocks abutting the U.S. - Canada Maritime Boundary line have been determined and are as depicted on the Supplemental Official OCS Block Diagrams (SOBD's). Consult the SOBD's for official descriptions and approval dates.

Copies of these diagrams and other information may be obtained at the appropriate MMS OCS Region, Office of Program Services.

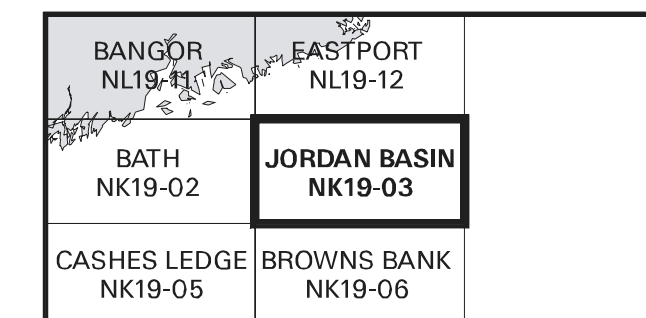
Legend: — U.S. - Canada Maritime Boundary

UNITED STATES DEPARTMENT OF THE INTERIOR
MINERALS MANAGEMENT SERVICE
OUTER CONTINENTAL SHELF OFFICIAL PROTRACTION DIAGRAM



NORTH AMERICAN DATUM OF 1983
(WORLD GEODETIC SYSTEM OF 1984)

LOCATION DIAGRAM



This diagram is prepared in accordance with 30 CFR 256.8

For the Director
Selma Humala
Chief, Mapping and Boundary Branch
Denver, Colorado Date 13-MAR-97