

Paul Klarin

Oregon Department of Land Conservation and Development

OREGON UPDATE

TERRITORIAL SEA PLAN PART FIVE

USE OF THE TERRITORIAL SEA FOR THE DEVELOPMENT OF
RENEWABLE ENERGY FACILITIES OR OTHER RELATED
STRUCTURES, EQUIPMENT OR FACILITIES

June 2014

Benchmark Chronology:

Governor's Executive Order - March 2008

Oregon FERC MOU - March 2008

TSP Part 5 Adopted - November 2009

BOEM Oregon Task Force – April 2011

TSP Part 5 Amended – January 2013

FERC TSP Approval – December 2013

NOAA TSP Approval – March 2014

OPT License Surrender – May 2014

Dry Docked...





To be removed this summer

PART FIVE PLAN MAP AREAS

Renewable Energy Exclusion Area (REEA)

Proprietary Use and Management Area (PUMA)

Resources and Uses Conservation Area (RUCA)

Resources and Uses Management Area (RUMA)

Renewable Energy Facility Suitability Study Area (REFSSA)

Renewable Energy Permit Area (REPA)

Special Management Areas designated by statute and OAR

Areas with authorized uses and special management designations under Goal 19

Areas with important, sensitive, or unique Goal 19 Resources and Uses

Areas with important or significant Goal 19 Resources and Uses

Areas of least conflict with Goal 19 Resources and Uses

Areas of existing MREC permits

MRE applications will not be accepted within these areas

MRE applications will not be accepted unless legally permissible, comply with the authorized use and area standards, and agreed to by the authorized users.

MRE applications must demonstrate **no reasonably foreseeable adverse effects** on inventoried marine resources and uses.*

MRE applications must demonstrate **no significant adverse effects** on inventoried marine resources and uses.

MRE applications must comply with **TSP Part Five Sections B and C**, general standards, and the applicable regulatory and proprietary requirements of state and federal agencies.*

Delineated sites with existing authorization for the development of MRE testing, research or facilities.

Visual Resource Area Overlay

Marine Recreation Area Overlay

Screening standards applied to all areas

Higher

Permit Review Standards

Lower

Already permitted.

Project Siting and Regulatory Process

⦿ Pre – Application Phase

- Home Work - Site Assessment
- Collaborative Outreach to Agencies and Stakeholders

⦿ DSL Process

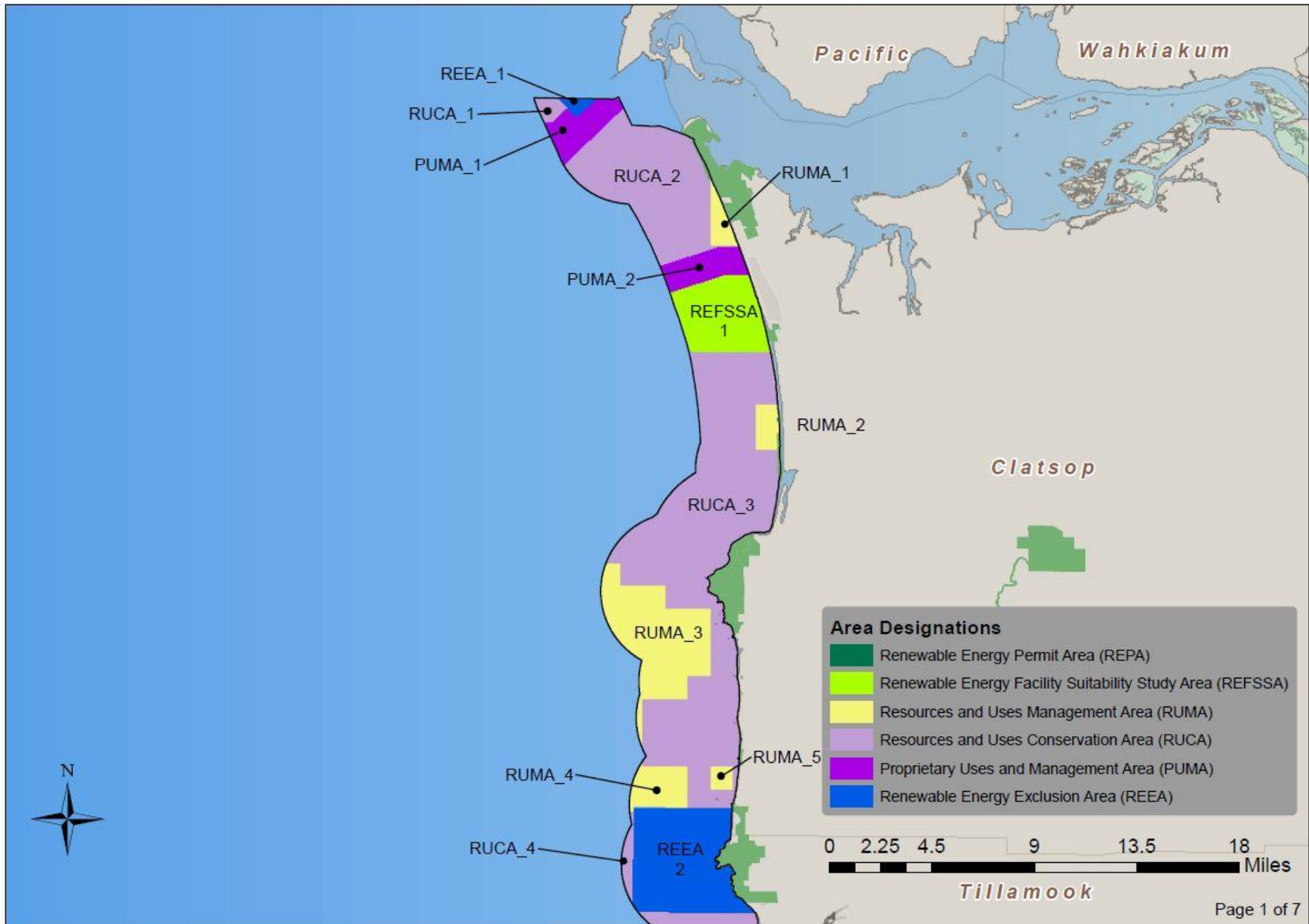
- Appropriate authorization, permit, lease, easement
- JART (membership based on location and project type)
- Territorial Sea Plan Part Five Review Standards

⦿ Other OR Agencies - Water Resources, Parks and Recreation, Fish and Wildlife Land Conservation and Development.

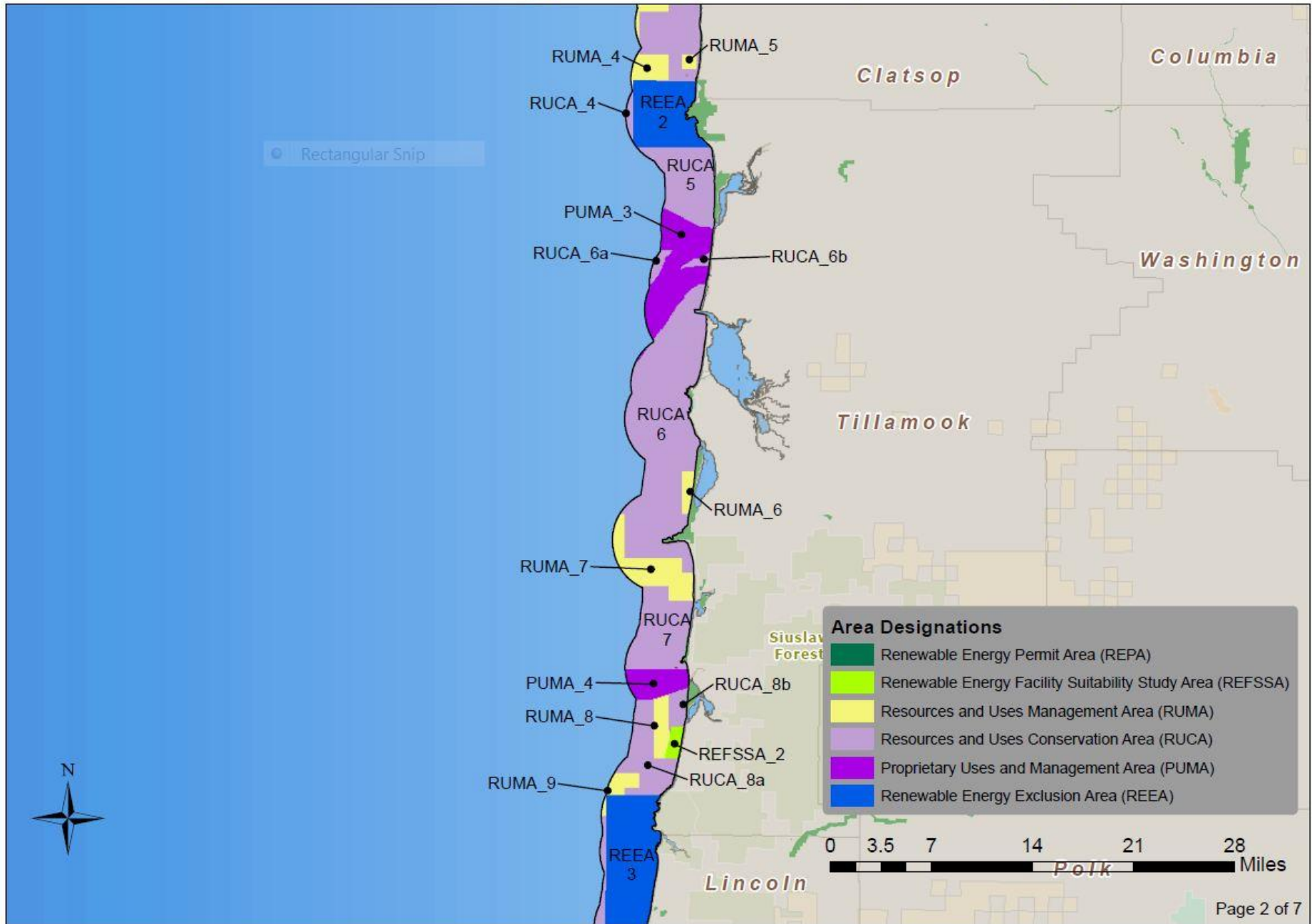
DSL Permit or Authorization

Type of Use	Permit or Authorization	OAR	FEE	Compensate Or Rent	TERM	TSP	Special Conditions
Scientific Equip <1 yr	Short-Term Authorization	125	\$0	\$0	Max 1 yr	Part 2	NA
Scientific Equip > 1 yr	Special Use License or Lease	125	\$750	Varies	License – 3 yrs Lease – 30 yrs	Part 2	
Demo Project	Temporary Use Authorization	140	\$750	Varies	Varies	Part 5	Financial Assurance
MRE Facility	Lease	140	\$750	Varies	Varies	Part 5	Financial Assurance
Cable from MHK in TS	Included in Lease	140	\$750	Varies		Part 4	Financial Assurance
Cable from MHK in OCS	Easement	83	\$5000	Varies	Up to 20 yrs	Part 4	State Land Board
Removal Fill Anchoring	Removal Fill Permit	85	Varies	Varies	Up to 5 yrs	Project Based	

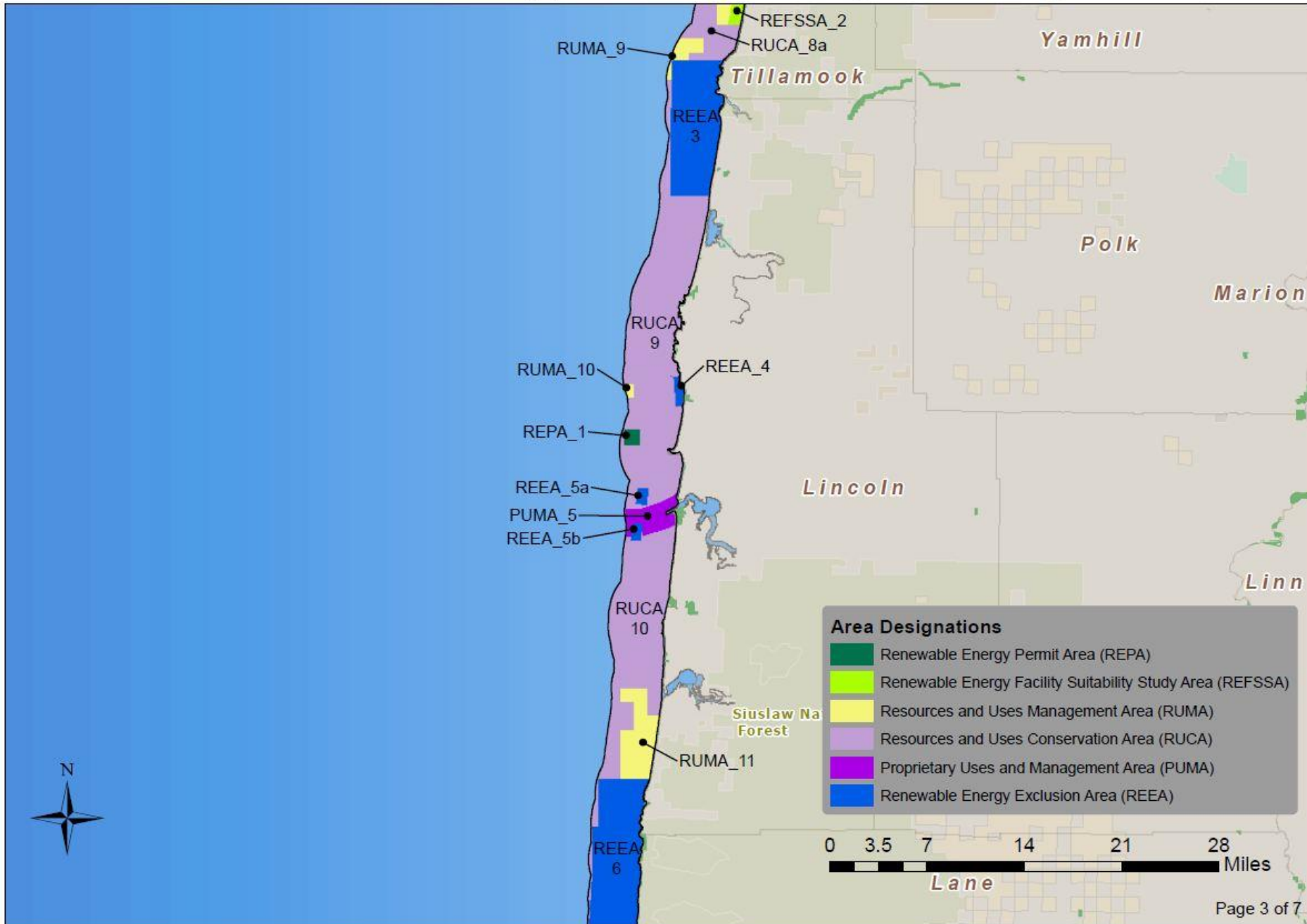
Territorial Sea Plan Part Five Appendix B - Plan Map Area Designation Index



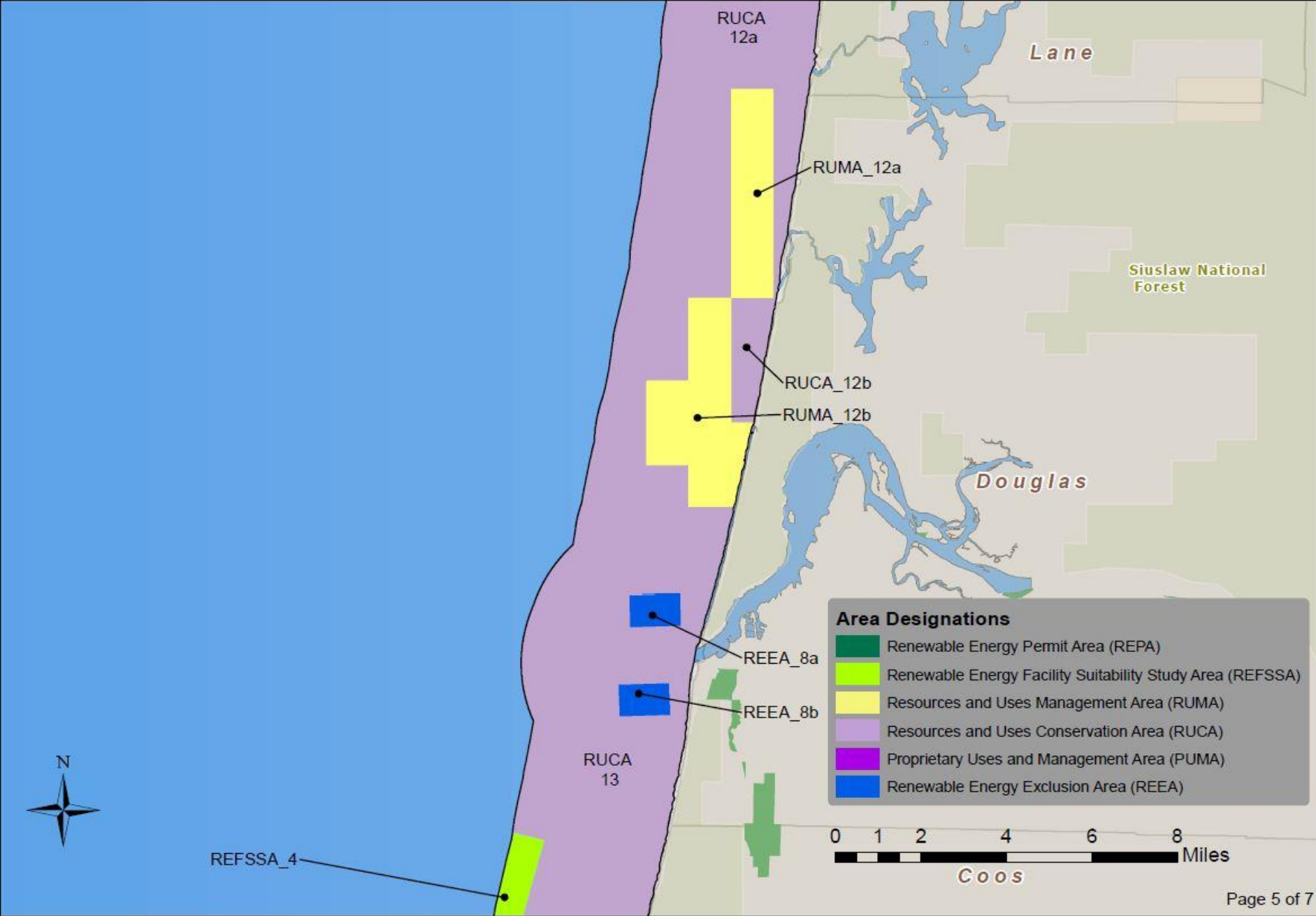
Territorial Sea Plan Part Five Appendix B - Plan Map Area Designation Index



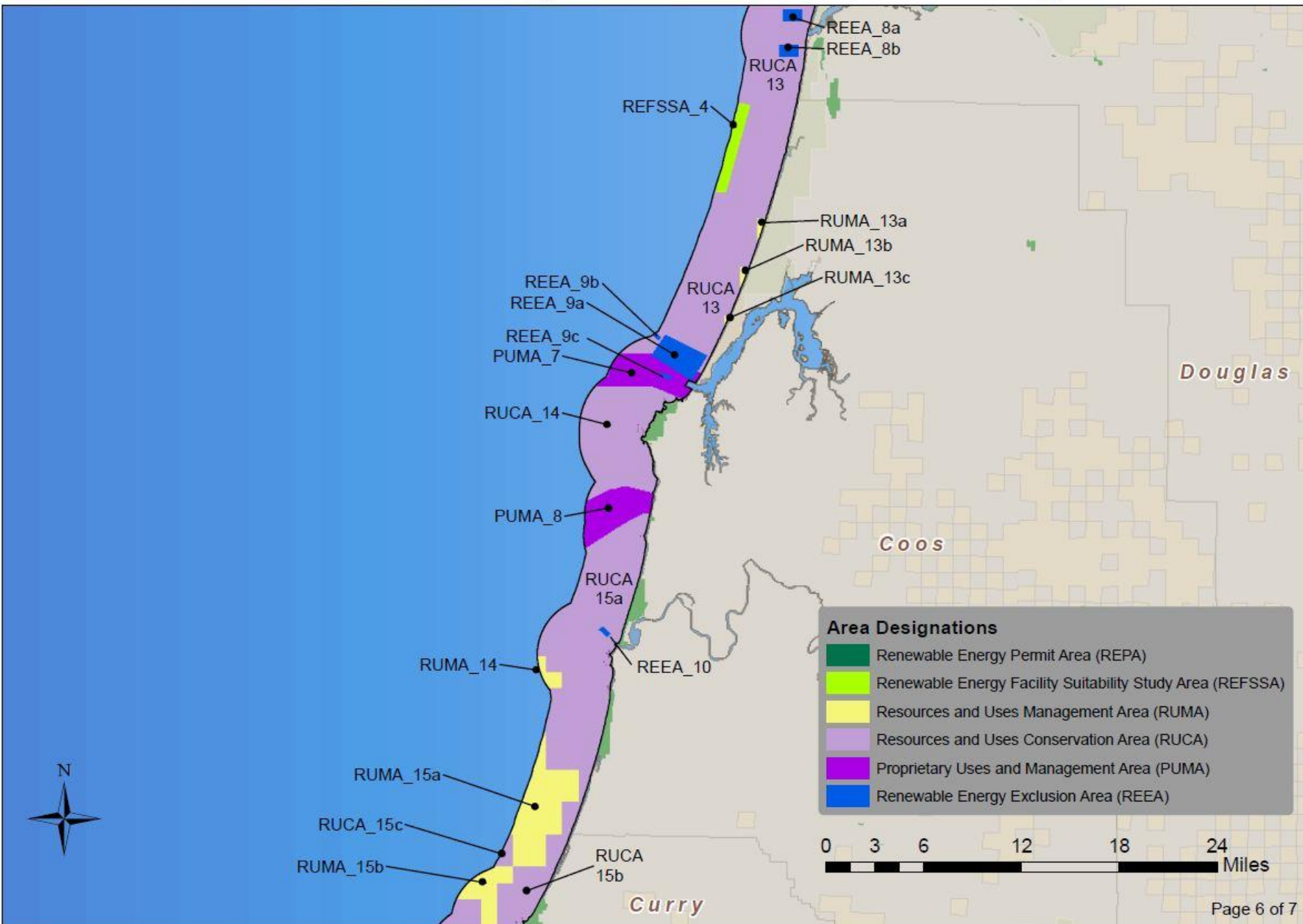
Territorial Sea Plan Part Five Appendix B - Plan Map Area Designation Index



Territorial Sea Plan Part Five Appendix B - Plan Map Area Designation Index



Territorial Sea Plan Part Five Appendix B - Plan Map Area Designation Index



Camp Rilea: 2015?



M3

Resolute Marine Energy

