

Unsolicited Research Lease Request: Pacific Marine Energy Center

BOEM Oregon Task Force Meeting

June 28, 2013

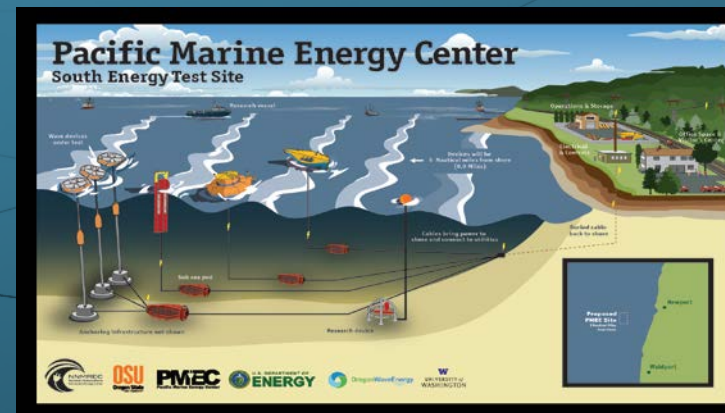
Jean Thurston

Oregon Task Force Coordinator
Office of Strategic Resources
Bureau of Ocean Energy Management

NNMREC-OSU's Unsolicited Research Lease Request

Pacific Marine Energy Center – South Energy Test Site

- Introduction to P MEC-SETS
 - General Description of Facilities and Objectives
- The area requested for a research lease
- General Schedule of Proposed Activities
- Data and Information
- Questions



Introduction to P MEC – SETS

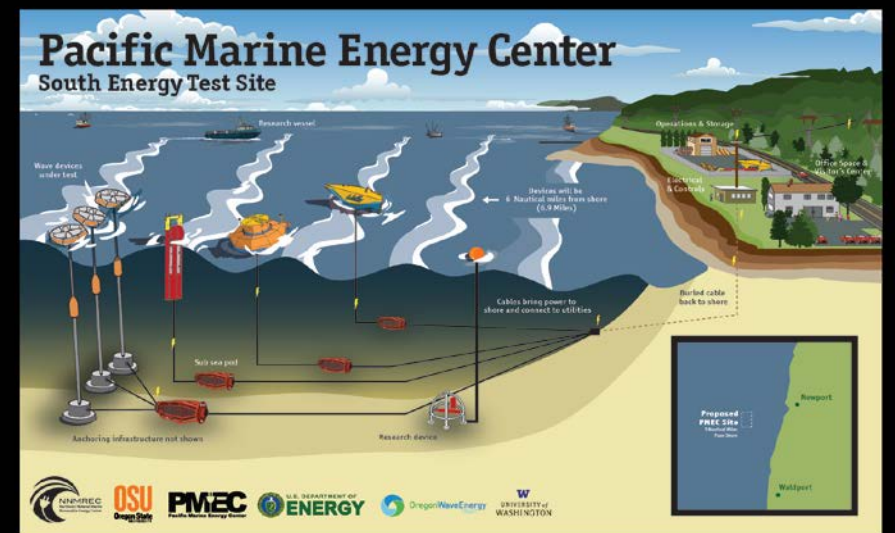
Pacific Marine Energy Center – South Energy Test Site NNMREC-OSU, Corvallis, OR

Project Highlights:

- 4 test berths
- Research & test MHK technology
- Grid connected
- No offshore construction
 - Use existing pier facilities
 - Potential phased installation
- Power Purchaser: TBD
- Install in 2015/6

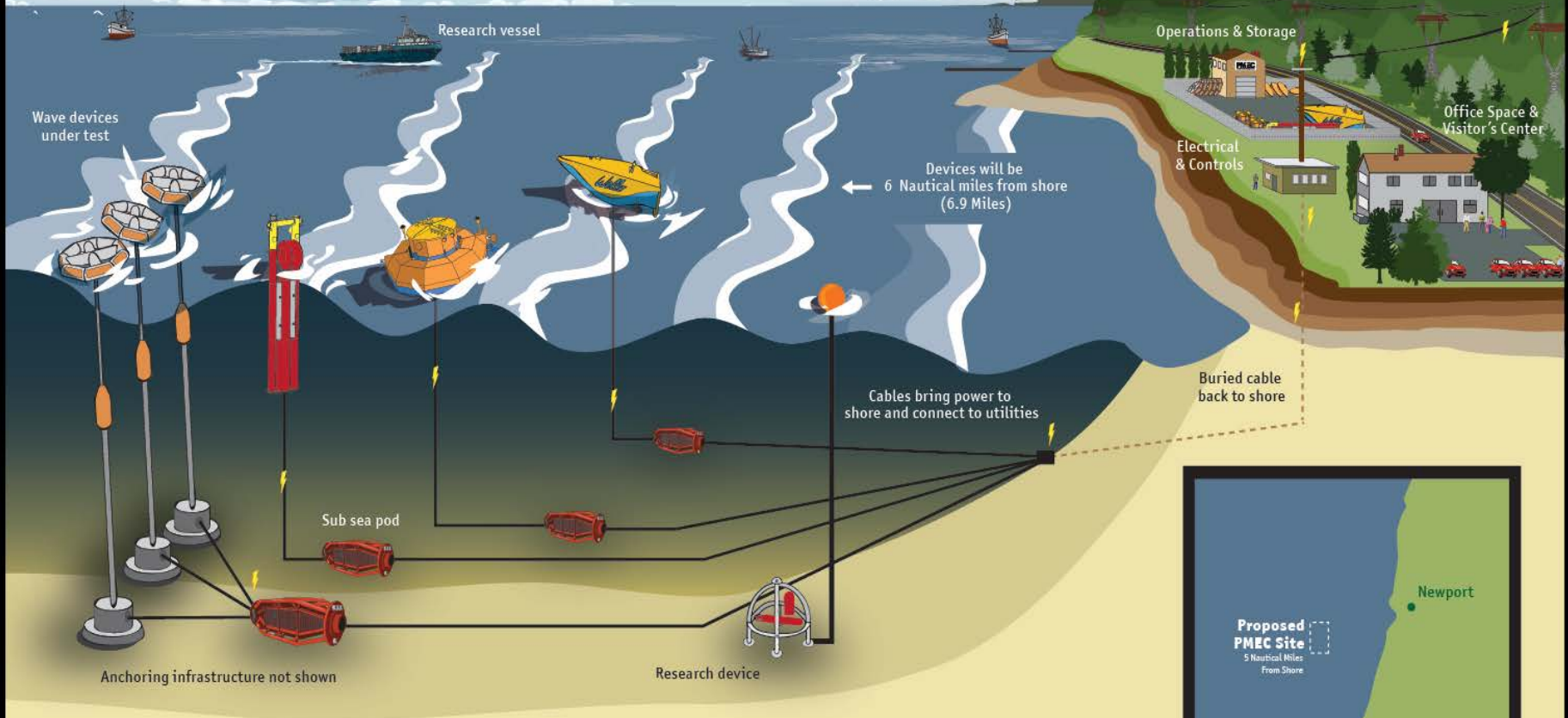
Site Characteristics

| | |
|-----------------------|------------------------|
| Location | Oregon, Federal Waters |
| Number of Test Berths | 4 |
| Capacity | ~10 MW |
| Deployed Devices | 10 (max) |
| Depth | 58-75 m |
| Distance from Shore | ~5 NM |



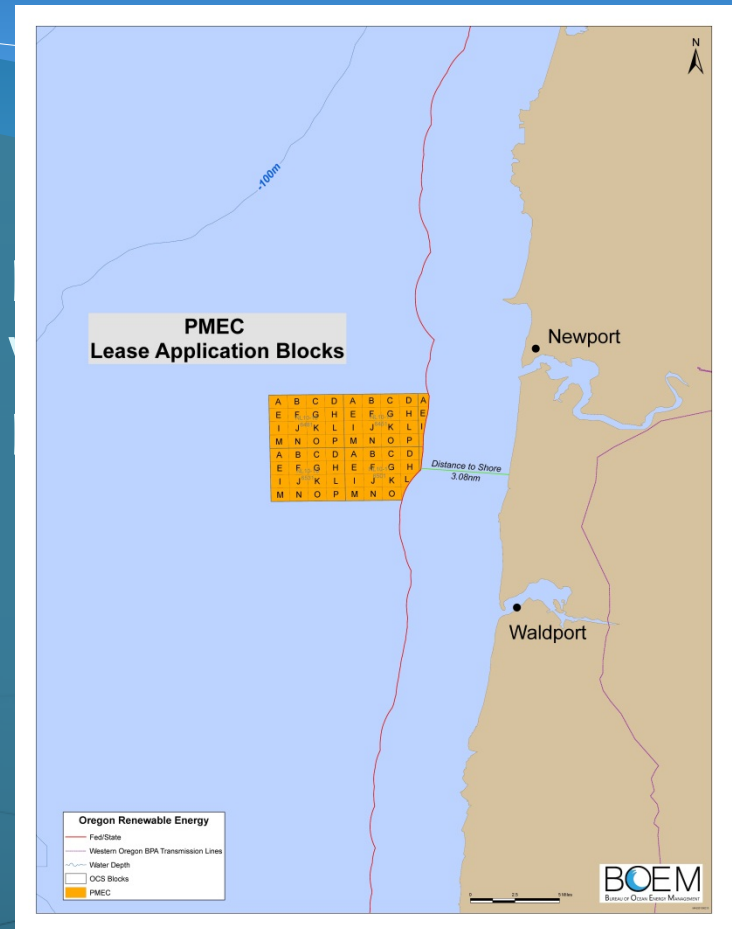
Pacific Marine Energy Center

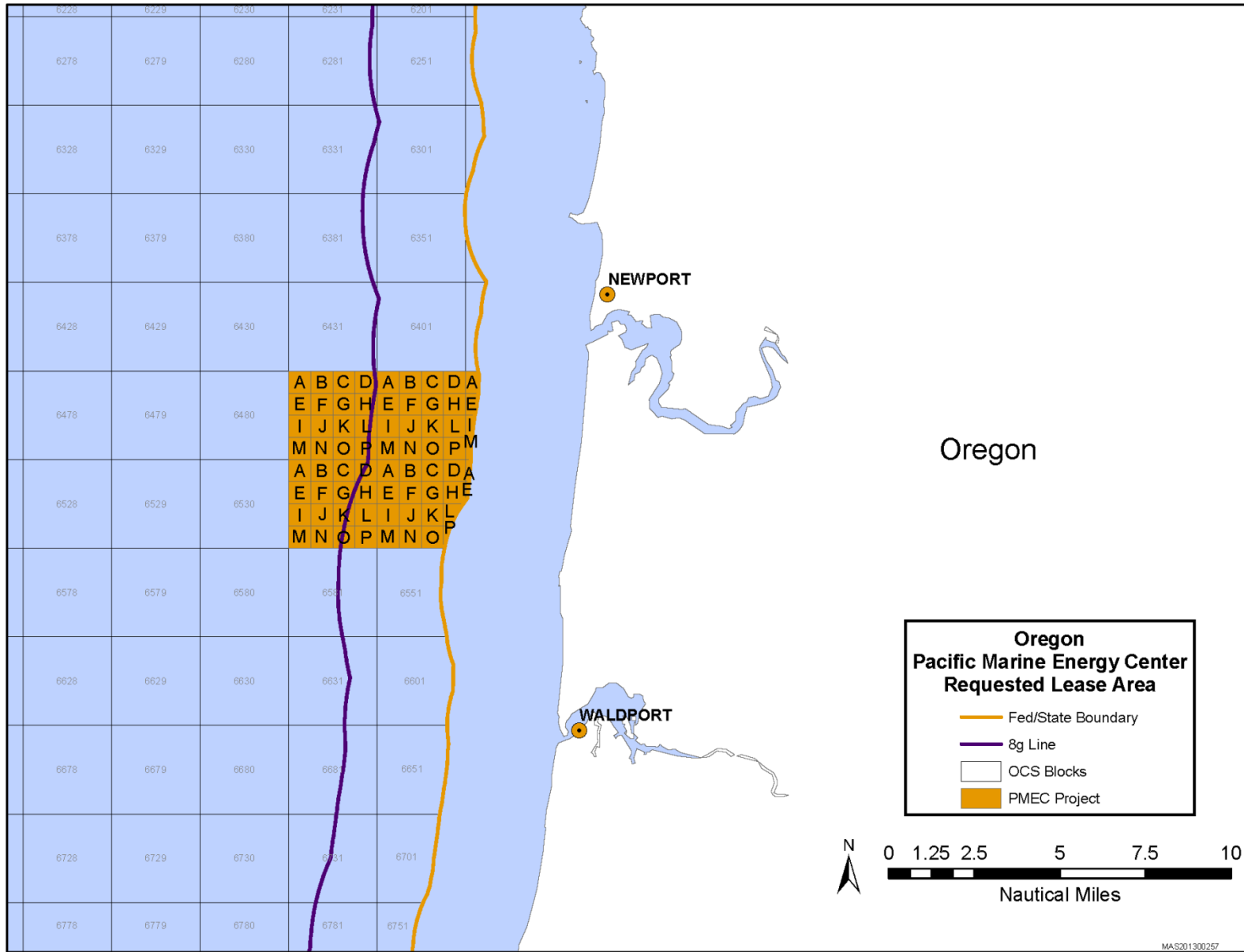
South Energy Test Site



Lease Area Blocks





- Protraction Newport Valley NL 10 – 10, Salem NL 10 - 11
- ~21,000 acres, or ~34 square miles
- OCS lease blocks 6481, 6451, 6531 and portions of OCS lease block 6501

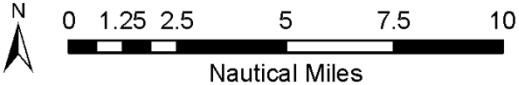




Oregon

**Oregon
Pacific Marine Energy Center
Requested Lease Area**

-  Fed/State Boundary
-  8g Line
-  OCS Blocks
-  PME Project



General Schedule of Proposed Activities

- * The following timelines are subject to BOEM's regulatory process and task force deliberation
 - June 2013 – Submits unsolicited lease request to BOEM
 - Summer 2013 – BOEM publishes **Request for Competitive Interest**, public comment period
 - Fall 2013 – **Determination** of Competitive Interest/No Competitive Interest. If noncompetitive determination is rendered, NNMREC-OSU has 60 days to submit a Site Assessment Plan (SAP); applicant **submits a Preliminary Application Document (PAD)** to FERC

General Schedule of Proposed Activities

- * The following timelines are subject to BOEM's regulatory process and task force deliberation
 - Spring 2014 – Applicant refines final design and submits **draft FERC License Application**; FERC & BOEM begin joint NEPA analysis
 - Fall 2014 – Applicant submits **final FERC License Application**
 - 2015/6 – Construction begins; phased installation of anchoring systems prior to installing MHK test devices
 - 2016 – Operations begin

Data and Information

- *Feasibility Study for a Grid Connected Pacific Marine Energy Center*, Pacific Energy Ventures, 2011
- *Ecological Effects of wave energy in the Pacific Northwest*, NOAA, 2008
- Pacific Fisheries Management Council Management Plans for groundfish, pelagic species, and salmon, 2010
- *Monitoring Studies at Yaquina Bay Ocean Dredged Material Disposal Sites*, USACE, 2010
- USFWS federally listed, proposed, candidate species & species of concern which may occur in lease area
- Developer will conduct further studies to provide sufficient data for FERC & BOEM environmental reviews and NEPA compliance, such as high-resolution geophysical and geological surveys, geotechnical surveys, archaeological surveys, biological and benthic surveys, etc.

Questions?

Up next: FERC and BOEM's environmental review process...