

The Gulf of Mexico Coastal Ocean Observing System Regional Association: So Much More than Data!

Barbara Kirkpatrick
Executive Director

BOEM ITM
August, 22 2017
New Orleans, LA





Matt
Howard



Chris
Simoniello



Shin
Kobara



Felimon
Gayanilo



Bob
Currier



Marion
Stoessel



Jen
Vreeland



Laura
Caldwell



Nadine
Slimak



Grant Craig

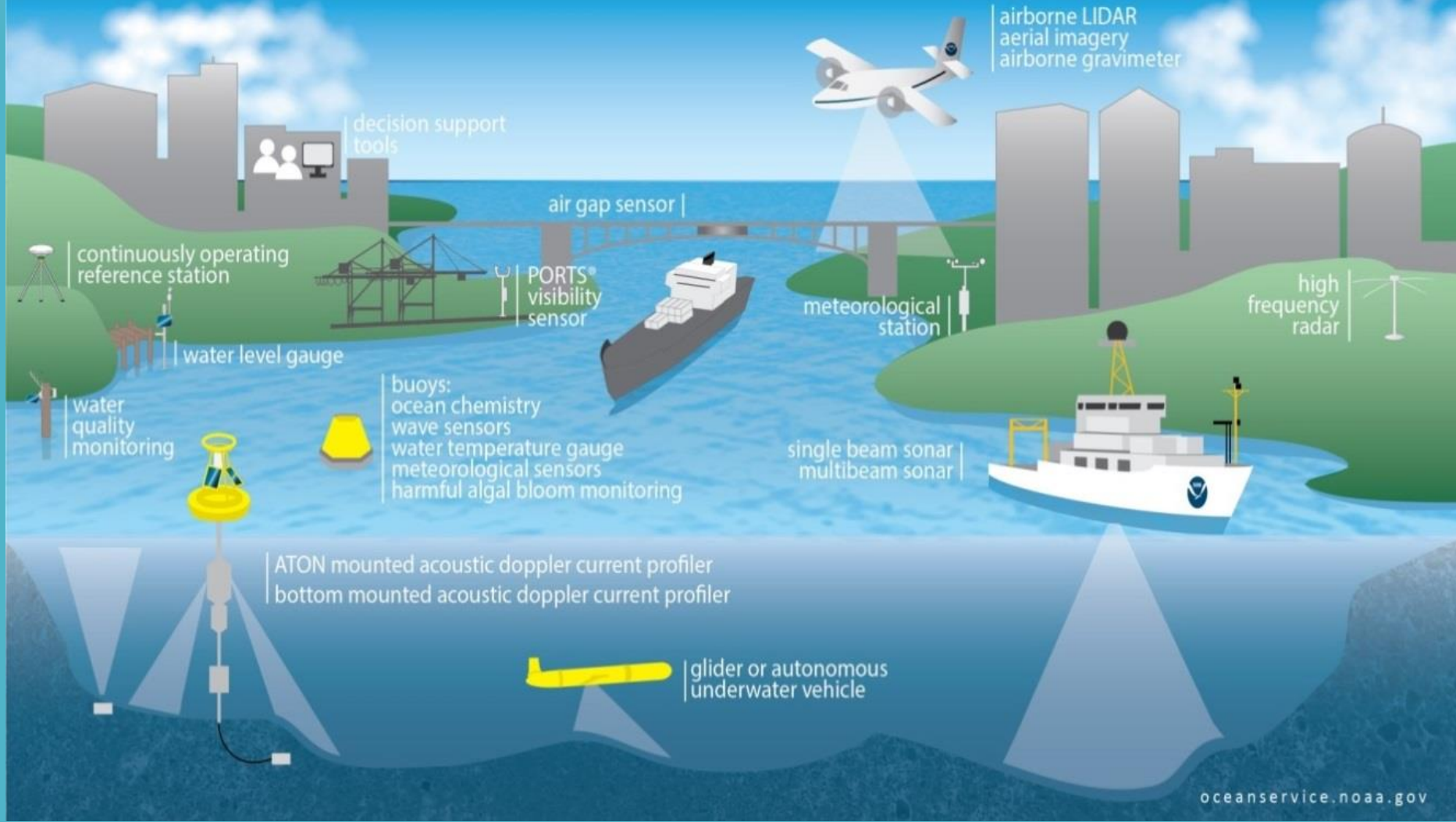
And advised by a 17 member Board



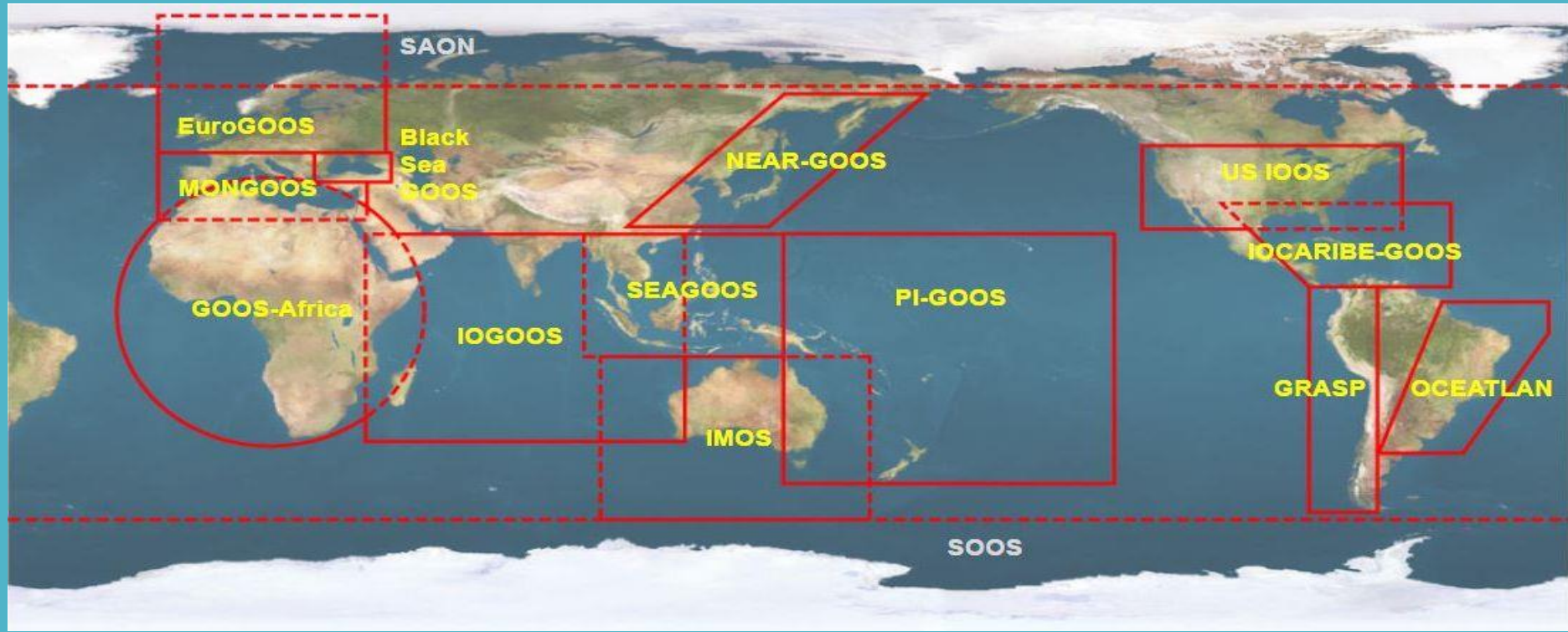
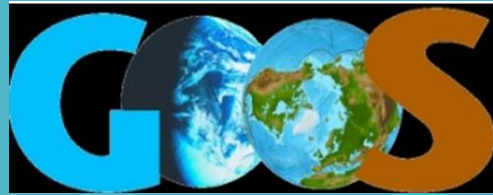
COASTAL INTELLIGENCE

Helping decision makers along the coast make the best choices for their communities.

satellite communication

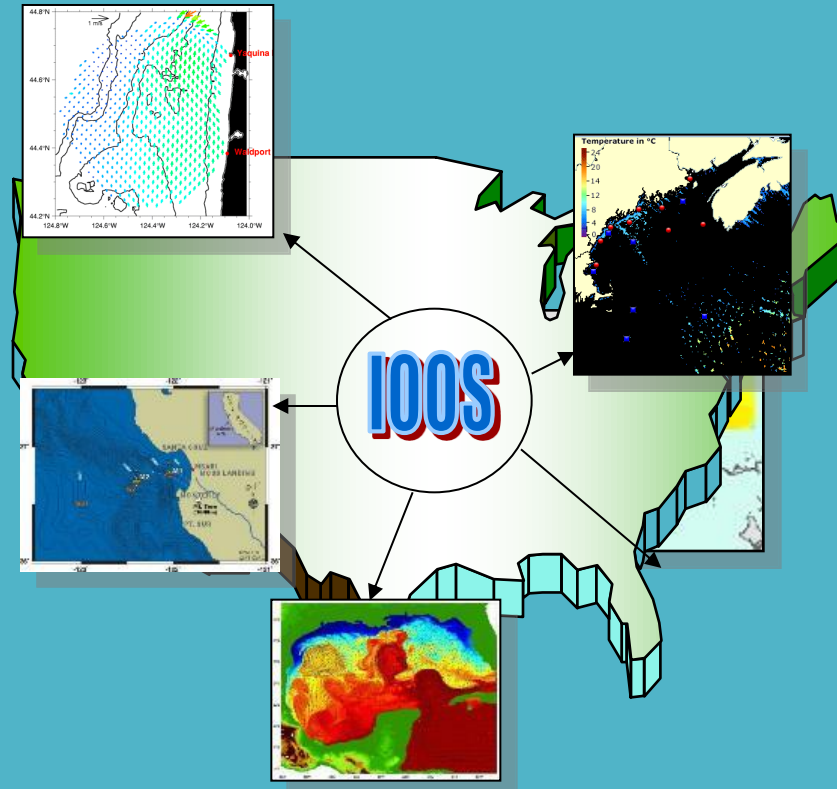


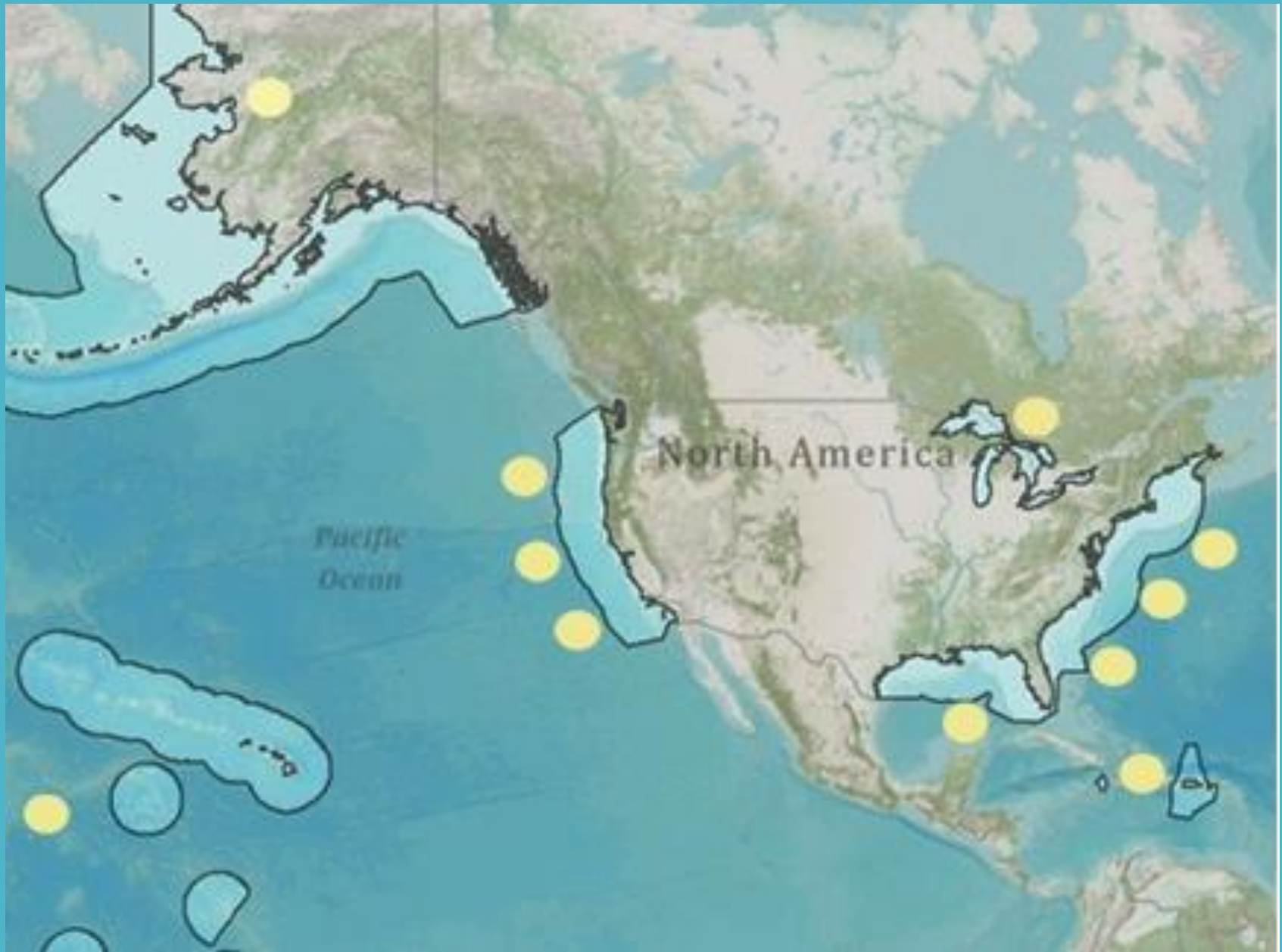
U.S. IOOS: Contribution to Global Observations



How is the national initiative organized?

International GOOS
National IOOS-
Ocean.US
Coastal Component
COOS
Regional Association
Implementation
(RA-COOS)





26 IOOS Variables

- Acidity, Bathymetry, Bottom Character, Colored Dissolved Organic Matter, Contaminants, Dissolved Nutrients, Dissolved Oxygen, Fish Abundance, Fish Species, Heat Flux, Ice Distribution, Ocean Color, Optical Properties, Partial Pressure of CO₂, Pathogens, Phytoplankton Species, Salinity, Sea Level, Stream Flow, Surface Currents, Surface Waves, Temperature, Total Suspended Matter, Wind Speed and Direction, Zooplankton Abundance, and Zooplankton Species*

What is the purpose of Regional Coastal Ocean Observation?

End-user Relevance

Regional Differences

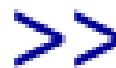
Local Applicability

Increased Flexibility



- Global Ocean Observing System > U.S. IOOS > GCOOS
- 2005-2015: 10 years old
- 5 themes of GCOOS
 - *Public Health and Safety*
 - *Healthy Ecosystems and Water Quality*
 - *Mitigation of Effects of Coastal Hazards*
 - *Safe and Efficient Marine Operations*
 - *Long-Term Ocean Variability and Changes*
- Membership and Partnership Model

DATA SOURCES		
Select all		
Deselect all		
<input checked="" type="checkbox"/> COMPS	<input checked="" type="checkbox"/> DSL	<input checked="" type="checkbox"/> LUMCON
<input checked="" type="checkbox"/> MOTE	<input checked="" type="checkbox"/> TABS	<input checked="" type="checkbox"/> TCOON
<input checked="" type="checkbox"/> WWCIS	<input checked="" type="checkbox"/> SCCF-RECON	<input checked="" type="checkbox"/> FSU/COMPS
<input checked="" type="checkbox"/> FWRI	<input checked="" type="checkbox"/> GenGCOOS	<input checked="" type="checkbox"/> Industry ADCP <small>Comau</small>
<input checked="" type="checkbox"/> NOS	<input checked="" type="checkbox"/> HERRS	<input checked="" type="checkbox"/> NDBC



Data Portal and Products:

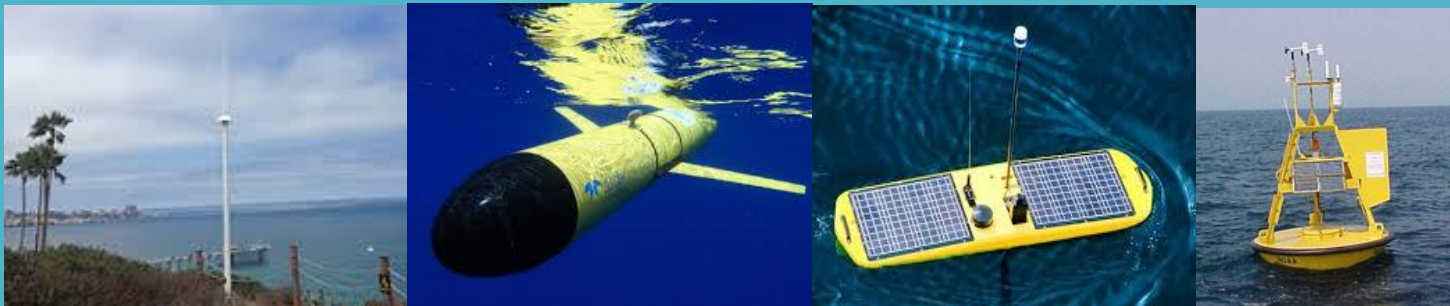
- Integrated Data for Emergency, Resource Managers and Others
- Data Products to Meet Public Stakeholder Needs
- Integrated Data for Private Sector Use in Building Business

GCOOS-RA Model

Data Providers/Owners/Operators – NOT the GCOOS- RA

- Federal
- State
- Academic
- NGO's

GCOOS – RA- Data management into centralized portal for all to use



GCOOS Data Portal



Welcome to GCOOS Data Portal

This **Data Portal** provides timely information about the environment of the United States portion of the Gulf of Mexico and its estuaries for use by decision-makers, including researchers, government managers, industry, the military, educators, emergency responders, and the general public. Observing stations in the region are monitored constantly.

Region's Data Sources

The following is an interactive map to display resources. Click on the station to view status and station details. Not all stations may be visible at the current scale. Zoom-in on an area to reveal all the stations. The HF Radar overlay uses Coastal Observing Research and Development Center (CORDC) published [HF RADAR API](#). [Click here](#) to toggle back to 2D mapping from 3D display.





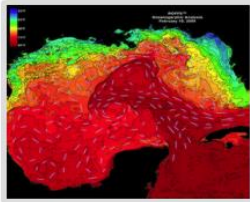
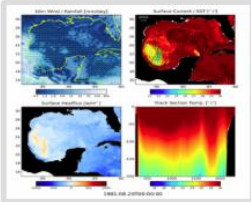








.....but, we are so much more!

- Real time, near real time and archival data
- Physical parameters-AND chemical and biologic parameters
- Products tailored to community needs

GCOOS Data Management and Products Portals

Real time and Historical Data

- Water Quality
- Field Cruises
- Model Forecasts
- MBON
- Sea Surface Height
- Bathymetry
- Satellite Data
- Gliders
- Fish

			
Observations	Gliders	Model Forecasts	Model Resources
			
Oil and Gas	Bathymetry	HABs	Satellites
			
Outreach	Climate	Fish	GeoPortal

New/Updated Map Products

			
<p>MSU Wave gliders</p> <p>During the 2014 Hurricane Seasons, three Unmanned Surface Vehicles know as Wave Gliders leased from Liquid Robotics have been deployed into the eastern Gulf of Mexico.</p>	<p>Gulf gliders map</p> <p>Near real-time glider tracking map in the Northern Gulf of Mexico. Updated in January 2015</p>	<p>Lionfish observations</p> <p>Observations of red lionfish from 1985-2014 have been recorded and shown in a map Updated in July 2014</p>	<p>Information for Mobile/Tablet Users</p>



GCOOS Data Management

Recent projects

GANDALF: Gulf AUV Network and Data Archive
Long-term Storage Facility

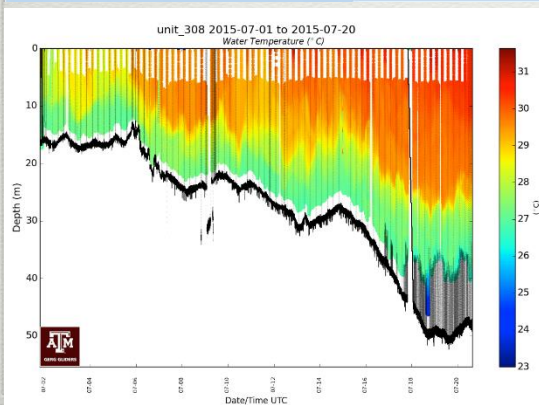
- AUV plots, trajectories and feature collections
- Binary AUV data files, text log files, encoded ARGOS messages
- 34B sensor records for an 80 day mission
- Processed to the National Glider Data Assembly Center (DAC)



Gandalf

Trajectories, Data, Summaries

Plots, Overlays, Google Earth

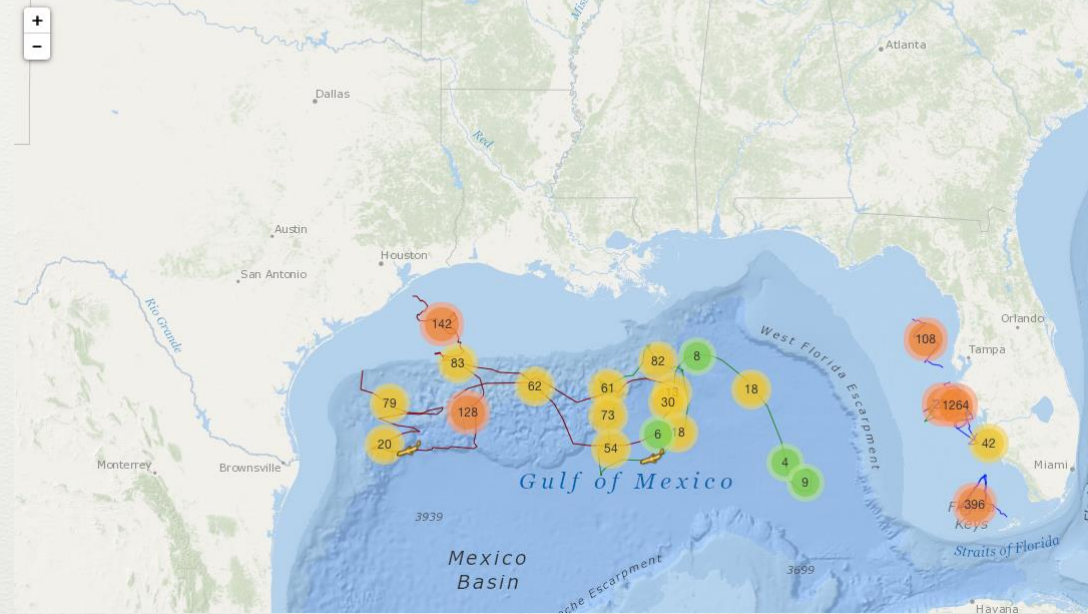


Gulf Of Mexico Coastal Ocean Observing System

Gulf AUV Network and Data Archive Long-term storage Facility (GANDALF)

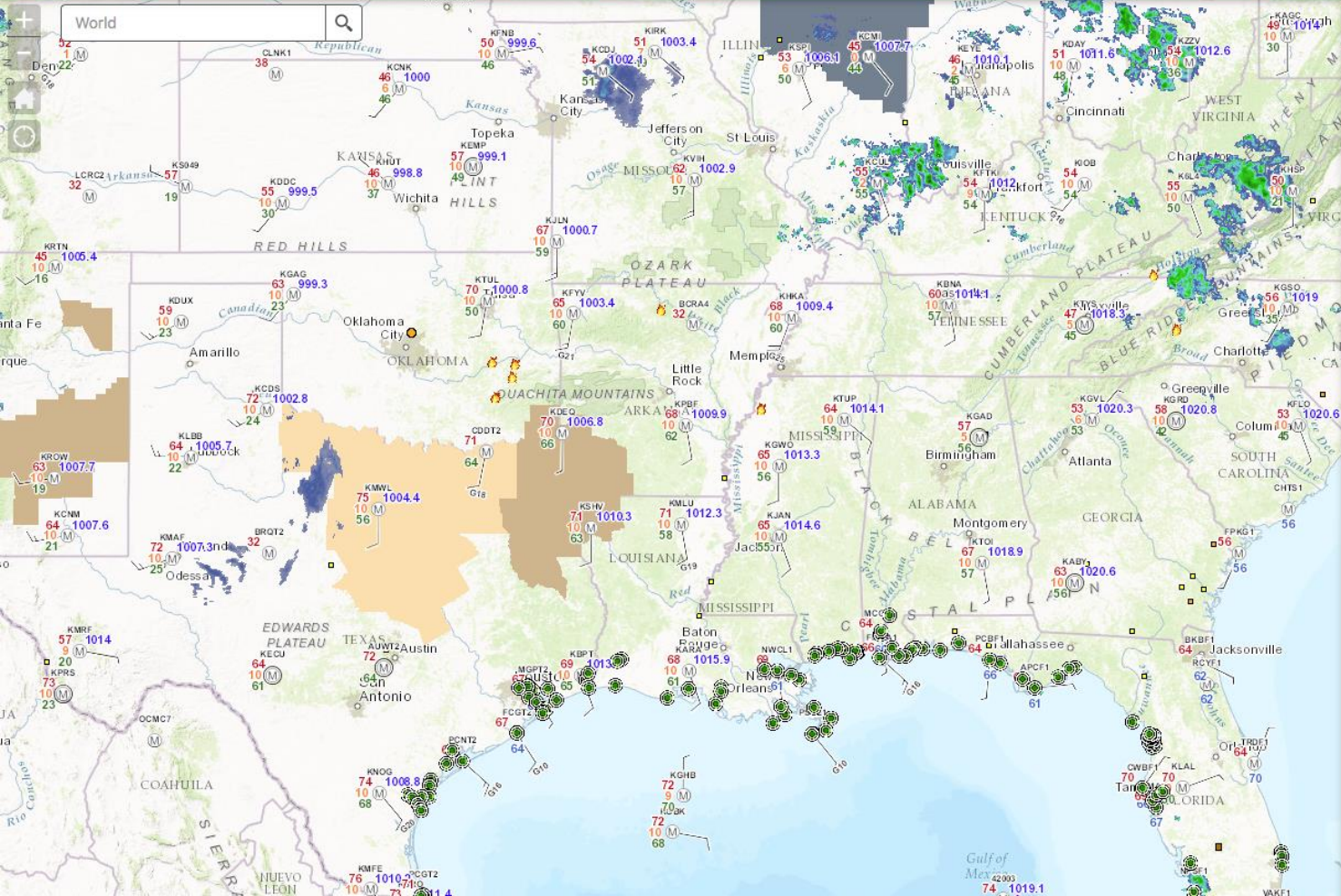
Home Summaries Deployed Help

Archived AUV Trajectories



AUV Deployment Summaries

PI.	Vehicle	Type	Operator	Project	Deployed	Recovered	Days Wet	Distance (km)	Data	KMZ	Plots
Beckler/Dixon	mote-genie	Slocum G2	Mote	FWRI	2015-12-01	2015-12-11	10	149			
Beckler/Dixon	mote-genie	Slocum G2	Mote	FWRI	2015-11-09	2015-11-12	3	38			
Ordonez	se_02	Slocum G2	DOF Subsea	Loop Current	2015-09-23	2015-11-01	39	1268			
Dixon	usf-bass	Slocum G1	USF	FWRI	2015-08-27	2015-09-04	9	138			
DiMarco	Sverdup	Slocum G2	TAMU	GERG	2015-08-22	2015-11-10	80	862			
Sutton/Hu	usf-murphy	Slocum G2	USF	USF	2015-08-09	2015-08-19	10	265			
DiMarco	Stommel	Slocum G2	TAMU	GERG	2015-08-05	2015-10-12	68	1177			
Dixon	usf-bass	Slocum G1	USF	FWRI	2015-07-06	2015-07-17	11	182			
DiMarco	unit_308	Slocum G2	TAMU	GERG	2015-07-01	2015-07-20	13	240			
DiMarco	unit_540	Slocum G2	TAMU	GERG	2015-07-01	2015-07-20	13	267			
Dixon	usf-bass	Slocum G1	USF	FWRI	2015-04-15	2015-04-23	8	137			
DiMarco	unit_307	Slocum G2	TAMU	GERG	2015-03-02	2015-03-25	23	267			
Dixon	mote_045	Slocum G1	Mote	FWRI	2014-08-01	2014-08-13	12	251			



- ### Layer List
- Operational Layers
 - COOPS_Tide_Stations
 - Near-Real-Time Surface In-Situ Observations
 - Recent Weather Radar Imagery
 - Tropical Cyclones - Watches, Warnings, and Track/Intensity Forecasts
 - Recent GOES Weather Satellite Imagery
 - National Flood Hazard (Insurance)
 - U.S. Department of the Interior - Weather Warnings
 - USDOC NOAA Global Surface Wind Observations (km/h)
 - NOAA - Surface Meteorological and Hydrologic Analyses (RTMA)
 - GEBCO Undersea Feature Names Gazetteer
 - Short-Duration Hazards - Warnings
 - USDOC NOAA Temporal Hurricane Tracks
 - GEBCO_2014 Bathymetric Contours
 - IANSFS_SurfaceCurrentForecasts
 - NavigationAndMarineTransportation
 - BoundariesAndRegions
 - NOAA_RNC

Citizen Science

Custom Web Environment

Citizen Science Home Get Data -

Home Observation Points

1. What is it?
2. What can you find?
3. How to use?
4. How to join?

This is a tool to explore water quality data collected by citizens.

Home - this map contains all observation entries and detailed info.

Get data - Interactive filtering tool to allow users to select a certain data set based on Date and Site.

Each organization collects water data based on their priorities and objectives. Common parameters are Temperature, Dissolved Oxygen, pH and Salinity

Current Date: Time:

Air Temperature (°C)

Trinity Bay @ Carrol Rd

8/9/2015 2:00 pm Site ID: 81036 Site Summary
Group ID: 34 Monitor ID: 8019

Data Field Observations

Sample Depth (m)	0.3
Air Temperature (°C)	35
Water Temperature (°C)	33
Average Dissolved Oxygen (mg/L)	6.8
pH	7.5
Transparency (m)	0.33
Total Depth (m)	0.7
Specific Gravity	0.998
SpGr Temp (°C)	33
Salinity (ppt)	2.4
Enterococcus (CFU/100m)	

Close



Citizen Science Home Get Data - Panel Tools About Help

Home Observation Points

1. What is it?
2. What can you find?
3. How to use?
4. How to join?

The project is being developed as the outreach and education portion of the developing GCOOS Integrated Water Quality Network and is being structured to accommodate data and information acquired by volunteer monitoring networks throughout the Gulf of Mexico region.

GCOOS currently has a cross-regional water quality collaboration with Florida Aquarium, Nature's Academy (FL) and the Galveston Bay Foundation (TX).

Search by Site Name

Citizen Science Home Get Data - About Help

Year

2011
2012
2013
2014
2015

1033 entries out of 1033
Reset All Filters

Galveston Bay Foundation Monitoring Points

Area

- Burnet Bay
- Christmas Bay
- Clear Lake
- East Bay
- Eckert's Bay
- Galveston Bay
- Jones Bay
- Mosses Lake
- Orfatts Bayou
- Swan Lake
- Trinity Bay
- West Bay

Timeline Filter

Click to select time range

Additional Filter

Data Table (It shows different entries based on filters)

Show 10 entries Search: Copy to clipboard Save to CSV Print Show

Date	Area	Air Temp (°C)	Water Temp (°C)	Dissolved Oxygen (mg/L)	pH	Salinity (ppt)	Entr
9/8/2015 1:10 pm	Clear Lake	33	33	8.2	8.7	2.4	10
9/8/2015 1:00 pm	Clear Lake	31	30	3.4	7.5	1.5	10
9/3/2015 8:07 am	Clear Lake	25	27	7.2	8.5	8.3	31
9/3/2015 7:13 am	Clear Lake	25	26	6.7	8.5	9.2	31

Sampling Day

Sun
Mon
Tue
Wed
Thu
Fri
Sat

Home **Observation Points**

1. What is it?

The project is being developed as the outreach and education portion of the developing **GCOOS Integrated Water Quality Network** and is being structured to accommodate data and information acquired by volunteer monitoring networks throughout the Gulf of Mexico region.

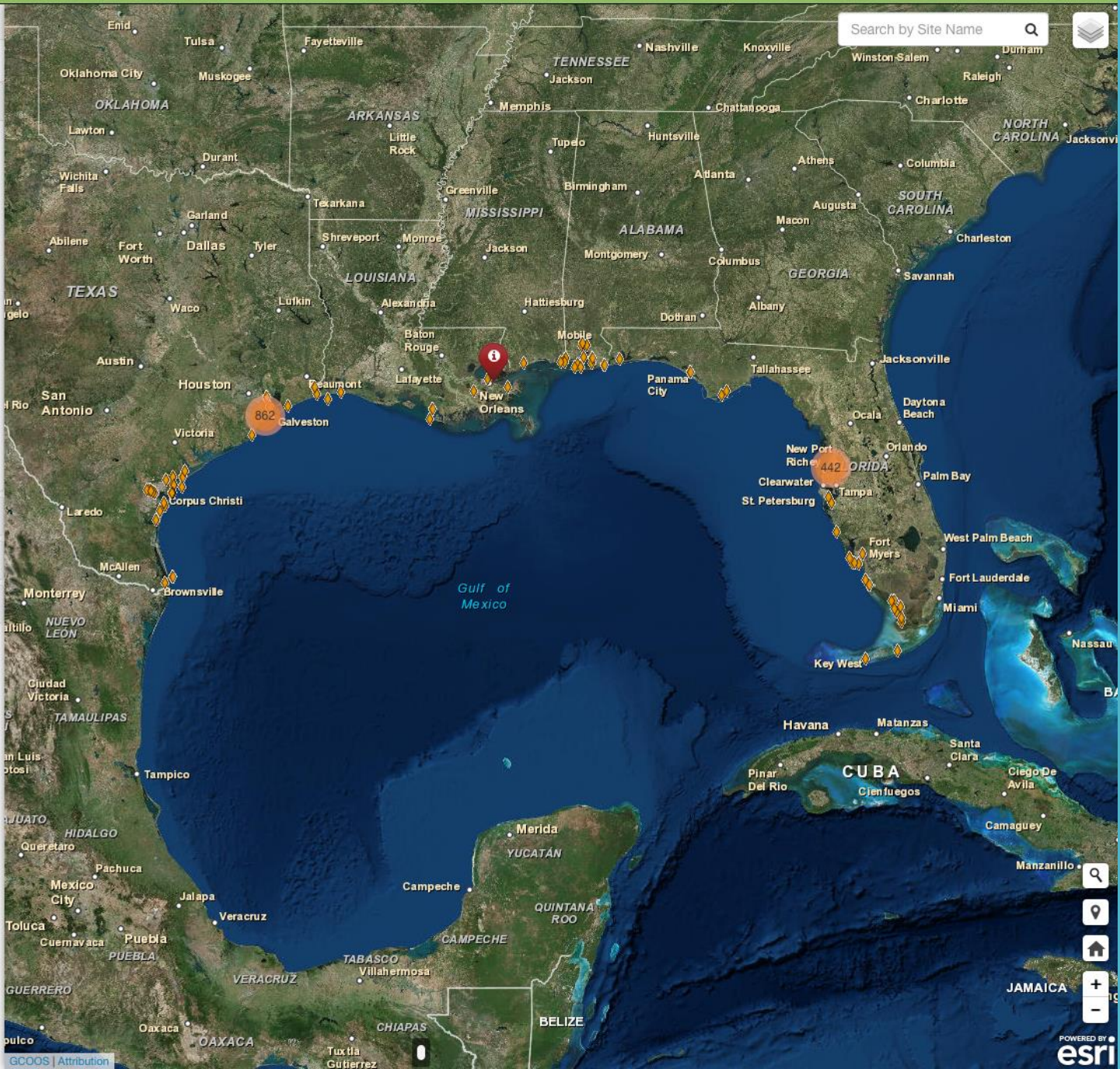
GCOOS currently has a cross-regional water quality collaboration with **Florida Aquarium**, **Nature's Academy (FL)** and the **Galveston Bay Foundation (TX)**.



2. What can you find?

3. How to use?

4. How to join?



Map navigation controls: search, location pin, home, zoom in (+), zoom out (-).

Home [Observation Points](#)

1. What is it?

The project is being developed as the outreach and education portion of the developing **GCOOS Integrated Water Quality Network** and is being structured to accommodate data and information acquired by volunteer monitoring networks throughout the Gulf of Mexico region.

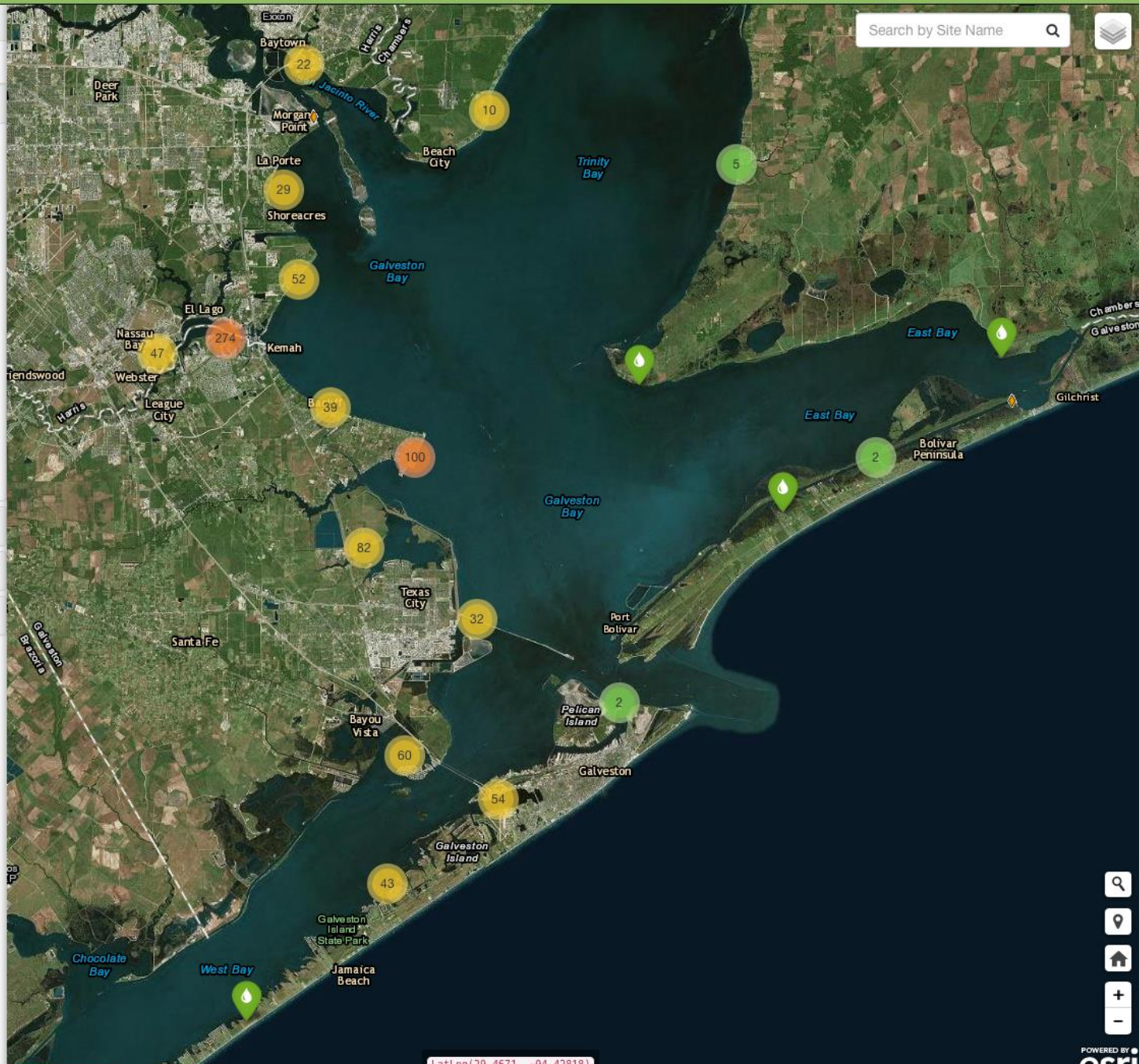
GCOOS currently has a cross-regional water quality collaboration with **Florida Aquarium**, **Nature's Academy (FL)** and the **Galveston Bay Foundation (TX)**.



2. What can you find?

3. How to use?

4. How to join?



Map navigation controls: search, location, home, zoom in (+), zoom out (-).

Galveston Bay @ Houston Yacht Club

10/7/2014 13:50:00 Site ID: 999999 [Site Summary](#)
 Group ID: 34 Monitor ID: 99999, Priscilla Blankenship

Data [Field Observations](#)

Sample Depth (m)	0.3
Air Temperature (°C)	27
Water Temperature (°C)	25.2
Average Dissolved Oxygen (mg/L)	5.9
pH	8
Transparency (m)	0.69
Total Depth (m)	2.46
Specific Gravity	1.0095
SpGr Temp (°C)	26.5
Salinity (ppt)	15.4

Close

Home [Observation Points](#)

1. What is it?

The project is being developed as the outreach and education portion of the developing **GCOOS Integrated Water Quality Network** and is being structured to accommodate data and information acquired by volunteer monitoring networks throughout the Gulf of Mexico region.

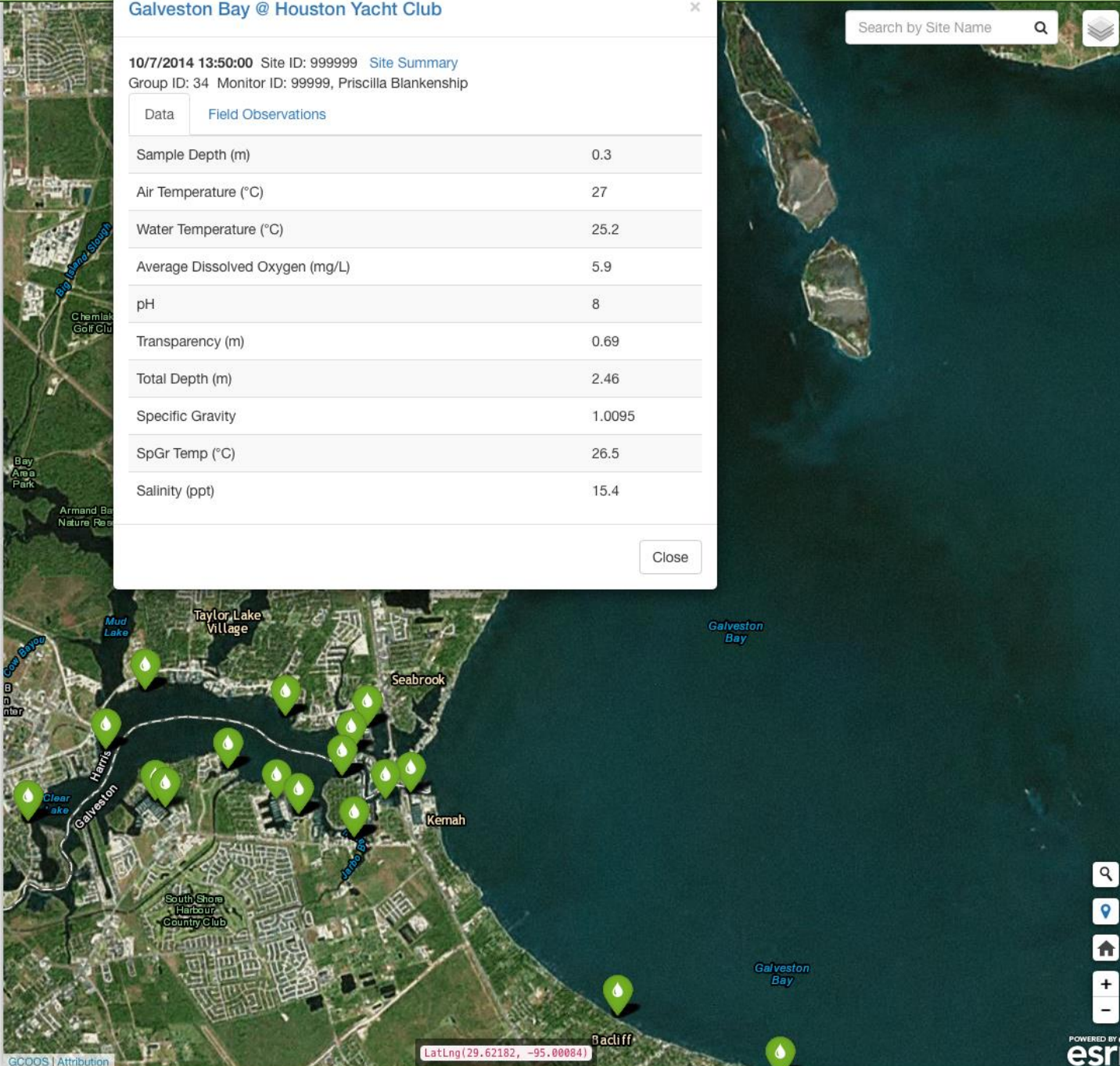
GCOOS currently has a cross-regional water quality collaboration with **Florida Aquarium**, **Nature's Academy (FL)** and the **Galveston Bay Foundation (TX)**.



2. What can you find?

3. How to use?

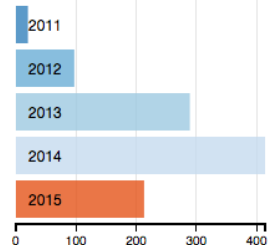
4. How to join?



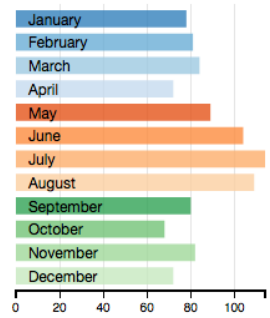
Search by Site Name



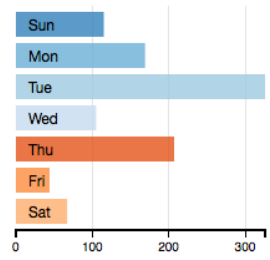
Year



Month



Sampling Day



Galveston Bay Foundation Monitoring Points

1033

entries out of 1033

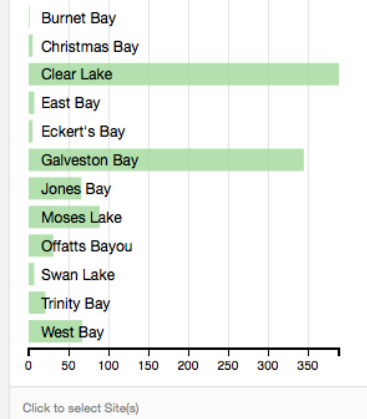
[Reset All Filters](#)

2/9/2014 15:45:00 Monitor ID: 12231, TST Site ID: 80961 Site: East Bay @ Anahuac NWR

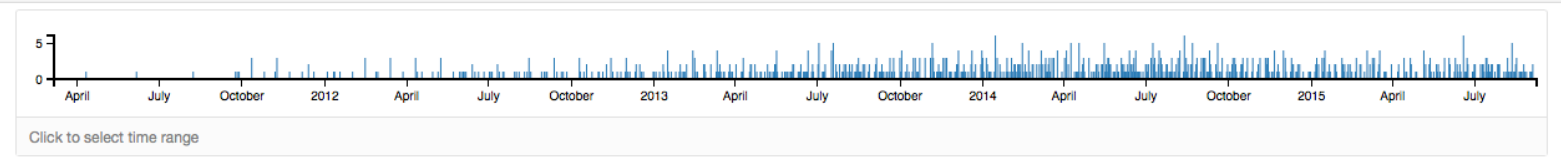
Common Data | **Data** | Water | Weather

Air Temperature (°C)	16
Water Temperature (°C)	12
Average Dissolved Oxygen (mg/L)	10.8
pH	7
Salinity (ppt)	19.65

Area



Timeline Filter



Additional Filter

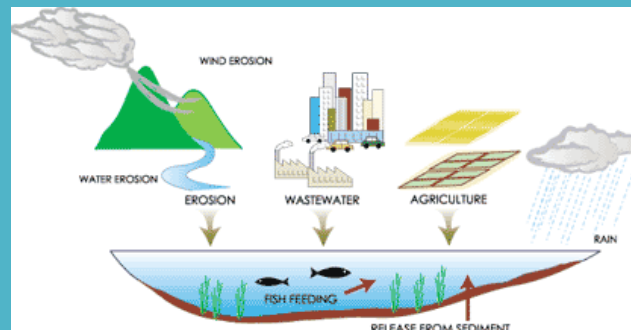
Data Table (It shows different entries based on filters)

Show entries Search: [Copy to clipboard](#) [Save to CSV](#) [Print](#) [Show / hide columns](#)

Date	Area	Air Temp (°C)	Water Temp (°C)	Dissolved Oxygen (mg/L)	pH	Salinity (ppt)	Enterococcus
9/8/2015 1:10 pm	Clear Lake	33	33	8.2	8.7	2.4	10
9/8/2015 1:00 pm	Clear Lake	31	30	3.4	7.5	1.5	10
9/3/2015 8:07 am	Clear Lake	25	27	7.2	8.5	8.3	31
9/3/2015 7:13 am	Clear Lake	25	26	6.7	8.5	9.2	31
9/2/2015 1:35 pm	Galveston Bay	26.5	27.5	5	8.5	16.6	

Hypoxia Nutrient Decision Support System

- 71 organizations all with different data recording practices
- 9 measured variables
- 7.5M records





Statistics: Assets/Inventory

Item	Count	Remarks
Organizations	80	Organizations or departments that reported data to a repository.
Platforms	285,391	Distinct locations where data were collected.
<i>Variable: Chlorophyll</i>	55,889	Chlorophyll-a concentration (mg L-1).
<i>Variable: Dissolved Oxygen</i>	785,554	Dissolved oxygen concentration (mg L-1).
<i>Variable: Enterococcus</i>	244,727	Enterococcus bacteria (counts).
<i>Variable: Fecal coliform</i>	155,654	Fecal coliform bacteria (counts).
<i>Variable: Nitrogen</i>	44,086	Nitrogen (nitrite, nitrate, ammonia and organic nitrogen) concentration (mg L-1) as N.
<i>Variable: pH</i>	6,381,872	Measure of the acidity or basicity of a water sample.
<i>Variable: Phosphorus</i>	107,304	Dissolved Total Phosphorus concentration (mg L-1).
<i>Variable: Salinity</i>	5,937,533	Measure of salt content following UNESCO standards.
<i>Variable: Water temperature</i>	6,146,860	In situ water temperature measured in degrees Celsius.
<i>Variable: Silicate</i>	47,767	Silicate concentration (uM L-1).
Total observation records	19,907,246	

Click on the map below to enlarge the map of H-N stations.

WARNING! Due to the number of stations, this can take a minute to render.

Direct Access: Assets/Inventory

To get a list of all the organizations and/or stations, their labels, description and coordinates, use the following call syntax:

```
http://nutrients.gcoos.org/get_data.php?assets={organization || stations}
```

Example:

- To list all organizations contributing data to the portal: http://nutrients.gcoos.org/get_data.php?assets=organization
- To list all stations contributing data to the portal: http://nutrients.gcoos.org/get_data.php?assets=stations



GULF OF MEXICO COASTAL OCEAN OBSERVING SYSTEM

Close

DISCLAIMER

The Gulf of Mexico Coastal Ocean Observing System (GCOOS) Data Portal aggregates data from the regional data providers for the convenience of all data users. Data published on this website should not to be used for navigation or certain other uses as we cannot guarantee data accuracy or availability. The data and delivery services are provided "as is" without warranty of any kind.

[Click here for full statement](#)

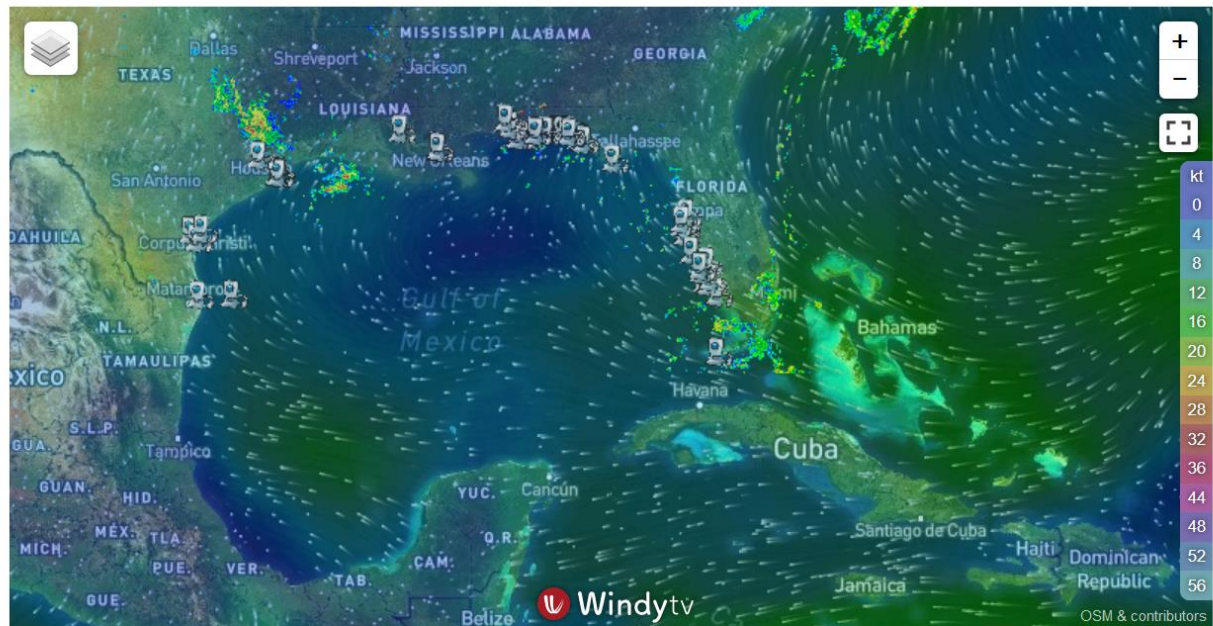
NOTE: click the button above the label to hide message. Labels can be dragged.

Google

Map data ©2016 Google, INEGI | Terms of Use

Tweets about from:nhc_atlantic OR etc...

Tropical Storms Blog



<http://products.gcoos.org/en/hurricane/>

2016 First Strategic Plan

<https://issuu.com/gcoos-ra/docs/gcoos-stratplan-and-addendum>



In Summary

- GCOOS is the regional association for observing in the Gulf of Mexico
- Our data portal takes in real time and near real time data from a wide variety of providers
- Our data product developers can manage physical, chemical and biologic data sets and display in a variety of maps, graphs, and tables to foster data synthesis
- You do the research- let us do your data management!

Join us!

Membership is free!

Be a part of a community committed to building a robust ocean observing system for our Gulf.

Contact: Barb.Kirkpatrick@gcoos.org

more than a membership
IT'S A PARTNERSHIP

If you have data management
needs.....call us!

Barb.Kirkpatrick@gcoos.org

941-724-4320