

# Maryland Commercial Wind Power Lease Sale

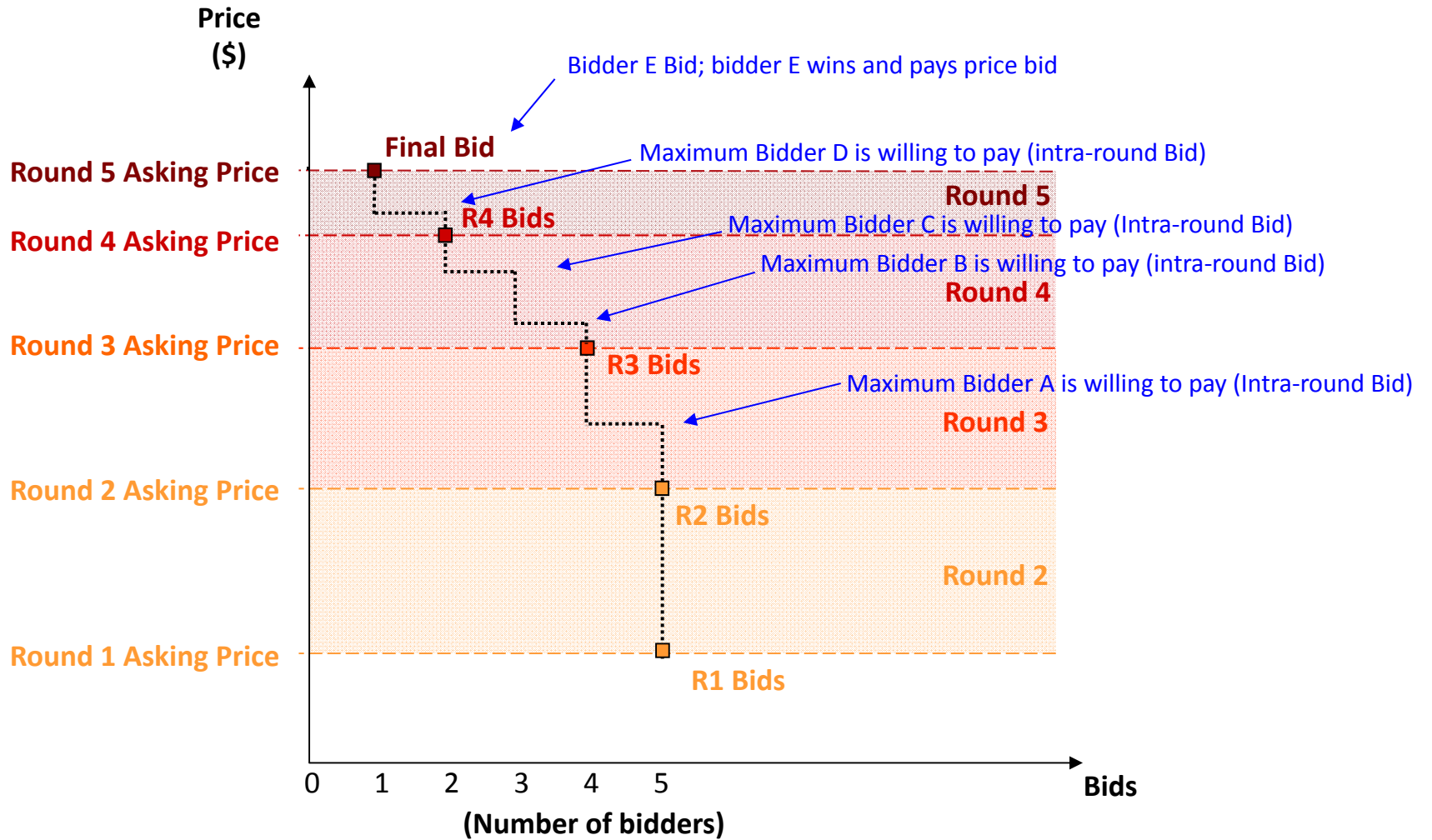
24 January 2014



# Auction Design

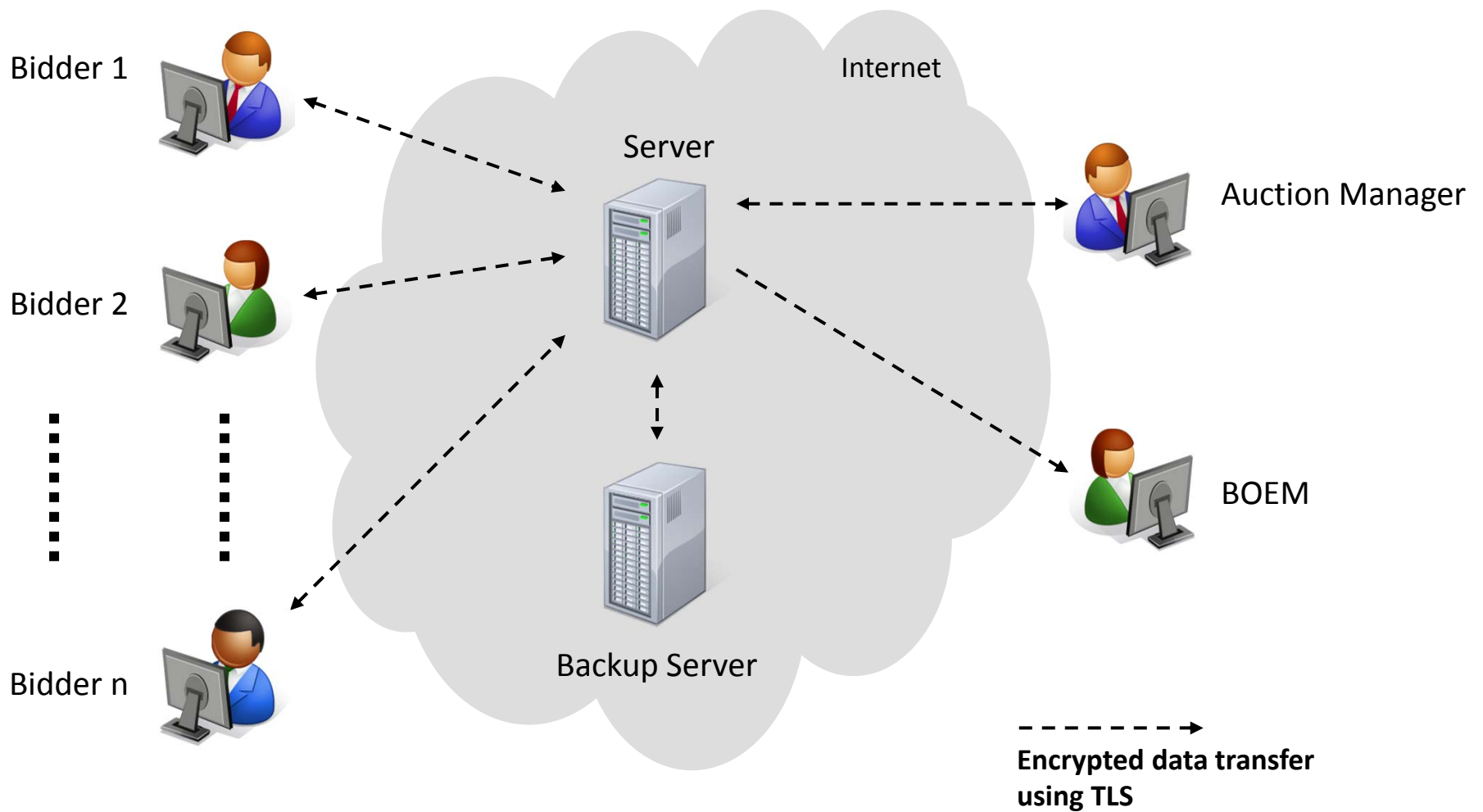
Ascending Clock Auction

# Ascending clock auction (single item)



# Auction Mechanics

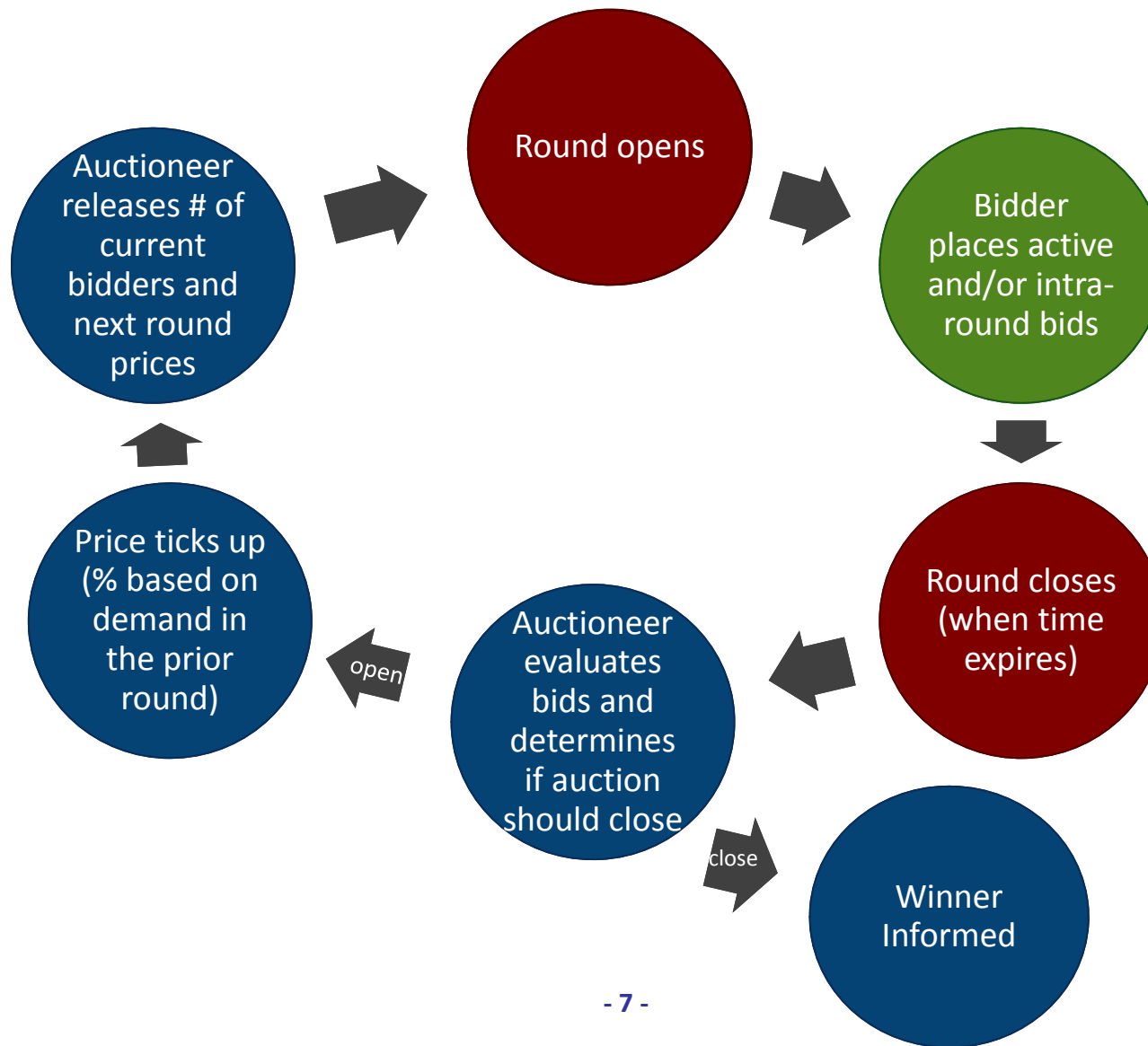
# Typical auction arrangements



# IT and Backup Requirements for Participation

- Computer requirements
  - Computer with an 1.2 GHz processor or higher
  - Web Browsers supported
    - √ - Google Chrome (Windows or MAC platforms)
    - √ - Internet Explorer 10 or 11 (with required configuration change for Internet Explorer 10)
  - Access to the internet
  - 1366x768 or higher resolution monitor
- Recommended backup facilities
  - Secondary means to access the internet, such as a mobile wireless card
  - More than one individual (up to three) authorized to bid for your company

# Illustrative Single Item Ascending Clock Auction Round Process

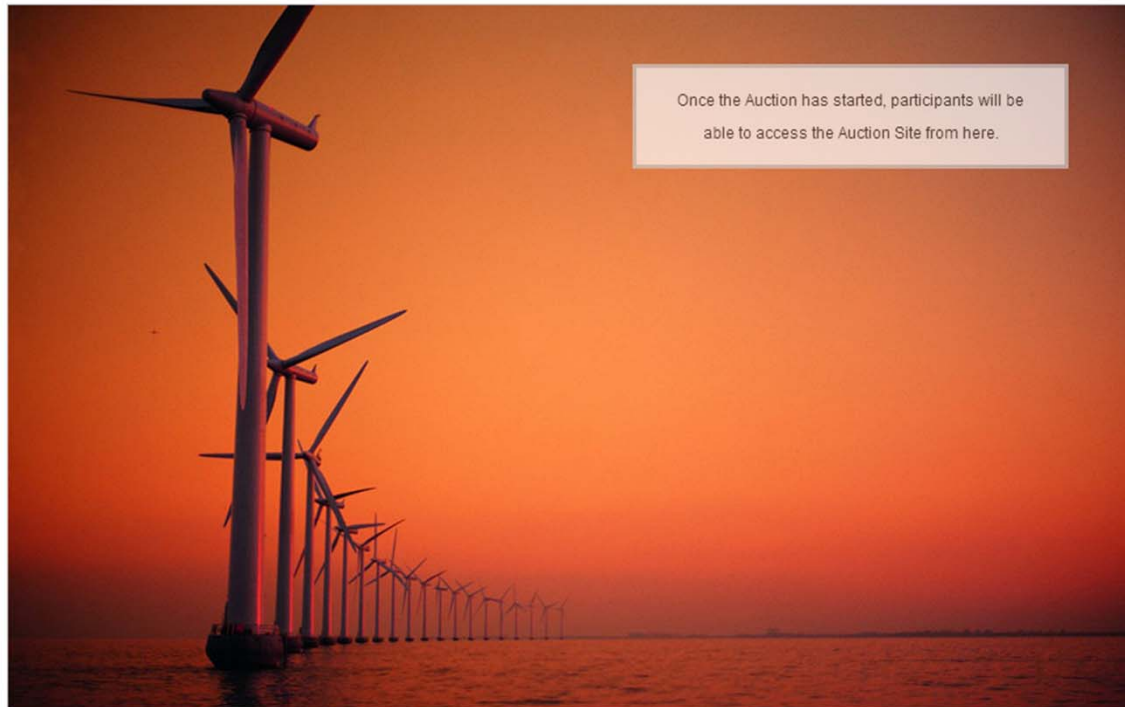


# Auction Screen Shots

Power Auctions

**BOEM** Bureau of Ocean Energy Management Auction  
BUREAU OF OCEAN ENERGY MANAGEMENT Offshore Renewable Energy Program

Welcome to the Auction Site for the Bureau of Ocean Energy Management's Offshore Renewable Energy Program.



Once the Auction has started, participants will be able to access the Auction Site from here.



# Auction Screen Shots


Welcome to the Auction Site for the BOEM Offshore Renewable Energy Program.

This web site is operated for the U.S. Government. Any unauthorized access is prohibited. Access of this system may be monitored, recorded, and subject to audit. Use of this system indicates consent to the monitoring and recording of the user's use of the system. The data and documents on this system include Federal records that may contain sensitive information protected by various Federal statutes. Unauthorized user attempts or acts to (1) access, upload, change, delete or deface information on this system, (2) modify this system, (3) deny access to this system, or (4) otherwise misuse this system are strictly prohibited and may result in criminal and civil penalties.

**Please log in.**

Username:

Password:



# Auction Screen Shots

**BOEM** Auction No. ATLW3, Atlantic Wind Three  
BUREAU OF OCEAN ENERGY MANAGEMENT Offshore Maryland

Time left in Round **58:46**  
 You have no Bid in place.

13 January 2014, 14:27:14 EST  
 Round 1 started at 14:26:00 and will end at 15:26:00 EST

[Current Bids](#) | [Generate Bid Confirmation](#) | [My Results](#) | [Auction Info](#) | [View Demand](#) | [Round Results](#) | **[Auction Schedule](#)** | [Messages](#) | [Downloads](#)

## Auction Schedule

[\[View Printable Format\]](#)

The Auction Schedule is shown below. The number of rounds will be dependent on bidding in the auction, therefore all future rounds are tentative and subject to change.

Round	Status	Start	End
Round 1	Active <a href="#">View Prices</a>	14:26:00 EST	15:26:00 EST
<i>Recess</i>		15:26:00 EST	16:26:00 EST
Round 2	Future	16:26:00 EST	16:56:00 EST
<i>Recess</i>		16:56:00 EST	17:56:00 EST
Round 3	Future	17:56:00 EST	18:26:00 EST
<i>Recess</i>		18:26:00 EST	19:26:00 EST
Round 4	Future	19:26:00 EST	19:56:00 EST
<i>Recess</i>		19:56:00 EST	20:56:00 EST
Round 5	Future	20:56:00 EST	21:26:00 EST
<i>Recess</i>		21:26:00 EST	22:26:00 EST
Round 6	Future	22:26:00 EST	22:56:00 EST
<i>Recess</i>		22:56:00 EST	23:56:00 EST
Round 7	Future	23:56:00 EST	24:26:00 EST

# Auction Screen Shots

**BOEM** Auction No. ATLW3, Atlantic Wind Three  
BUREAU OF OCEAN ENERGY MANAGEMENT Offshore Maryland

Time left in Round  
**58:26**  
You have no Bid in place.

13 January 2014, 14:27:34 EST  
Round 1 started at 14:26:00 and will end at 15:26:00 EST

Current Bids | Generate Bid Confirmation | My Results | Auction Info | View Demand | Round Results | Auction Schedule | **Messages** | Downloads

## Messages

[\[View Printable Format\]](#)

### Announcements

You have 1 announcement.

To: All Participants

#### Atlantic Wind Three, Offshore Maryland

From: Adeh DeSandies, Auction Manager

Sent: 13 January 2014, 14:25:09 EST

Welcome to the Atlantic Wind Three, Offshore Maryland. If you wish to contact the Auction Manager...

[View entire announcement »](#)

### My Conversations

You have no conversations.

[Start New Conversation »](#)

#### Note:

- "My Conversations" shows the most recent message of each conversation.
- The Auction Manager may respond to your messages via phone or this message facility.

# Auction Screen Shots

**BOEM** Auction No. ATLW3, Atlantic Wind Three  
BUREAU OF OCEAN ENERGY MANAGEMENT Offshore Maryland

Time left in Round  
**58:10**  
You have no Bid in place.

13 January 2014, 14:27:50 EST  
Round 1 started at 14:26:00 and will end at 15:26:00 EST

[Current Bids](#) [Generate Bid Confirmation](#) [My Results](#) [Auction Info](#) [View Demand](#) [Round Results](#) [Auction Schedule](#) **Messages** [Downloads](#)

**Start New Conversation**

To: Auction Managers  
Subject:

[« Back to Messages](#)

# Auction Screen Shots

**BOEM** Auction No. ATLW3, Atlantic Wind Three  
BUREAU OF OCEAN ENERGY MANAGEMENT Offshore Maryland

Time left in Round  
**57:50**  
You have no Bid in place.

13 January 2014, 14:28:10 EST  
Round 1 started at 14:26:00 and will end at 15:26:00 EST

[Current Bids](#) [Generate Bid Confirmation](#) [My Results](#) **[Auction Info](#)** [View Demand](#) [Round Results](#) [Auction Schedule](#) [Messages](#) [Downloads](#)

### Auction Info - Products

**Products** [My Auction Info](#) [\[View Printable Format\]](#)

Lease Area	Abbreviation	Eligibility Points Required	Opening Price
Commercial Lease OCS-A 0489 ("North Lease Area")	0489	1	\$65,474
Commercial Lease OCS-A 0490 ("South Lease Area")	0490	1	\$93,940

# Auction Screen Shots

**BOEM** Auction No. ATLW3, Atlantic Wind Three  
BUREAU OF OCEAN ENERGY MANAGEMENT Offshore Maryland

Time left in Round  
**57:38**  
You have no Bid in place.

13 January 2014, 14:28:22 EST  
Round 1 started at 14:26:00 and will end at 15:26:00 EST

[Current Bids](#) [Generate Bid Confirmation](#) [My Results](#) **[Auction Info](#)** [View Demand](#) [Round Results](#) [Auction Schedule](#) [Messages](#) [Downloads](#)

### My Auction Info

[Products](#) **My Auction Info** [\[View Printable Format\]](#)

My Initial Eligibility: 2 pts  
My Bid Deposit: \$823,750  
My Percentage Credit: 0.00%

© 2000-2014 by Power Auctions LLC. All rights reserved. | [Privacy Statement](#)

# Auction Screen Shots

**BOEM** Auction No. ATLW3, Atlantic Wind Three  
BUREAU OF OCEAN ENERGY MANAGEMENT Offshore Maryland

Time left in Round **38:07**  
 You have no Bid in place.

13 January 2014, 14:47:53 EST  
 Round 1 started at 14:26:00 and will end at 15:26:00 EST

[Current Bids](#) | [Generate Bid Confirmation](#) | [My Results](#) | [Auction Info](#) | [View Demand](#) | [Round Results](#) | [Auction Schedule](#) | [Messages](#) | [Downloads](#)

## Current Bids - Round 1

Place a Live Bid by checking the box in the Live Bid column.

Activity: **0 pts** Eligibility: **2 pts**  
 Eligibility Next Round: **0 pts**

Eligibility Status

1  2

Lease Area	Live Bid
Commercial Lease OCS-A 0489 ("North Lease Area")	<input type="checkbox"/> \$65,474
Commercial Lease OCS-A 0490 ("South Lease Area")	<input type="checkbox"/> \$93,940
As-bid Price:	\$0
Imputed Credit (0.00%):	\$0
<b>Cash Bid:</b>	<b>\$0</b>

**Note:**

- Activity: Actual number of Lease Areas that you have included in your Live Bid in the current Round.
- Eligibility: Maximum number of Lease Areas that you may include in your Live Bid in the current Round.
- Eligibility Next Round: Equal to the number of Lease Areas included in your current Live Bid.
- Imputed Credit applies only to the highest priced Lease Area selected.
- Live Bid placed for this Lease Area
- No bid placed for this Lease Area

# Auction Screen Shots

**BOEM** Auction No. ATLW3, Atlantic Wind Three  
BUREAU OF OCEAN ENERGY MANAGEMENT Offshore Maryland

Time left in Round **36:17**

13 January 2014, 14:49:43 EST  
 Round 1 started at 14:26:00 and will end at 15:26:00 EST

[Current Bids](#) | [Generate Bid Confirmation](#) | [My Results](#) | [Auction Info](#) | [View Demand](#) | [Round Results](#) | [Auction Schedule](#) | [Messages](#) | [Downloads](#)

## Current Bids - Round 1

Place a Live Bid by checking the box in the Live Bid column.

Activity: **1 pt** Eligibility: **2 pts**  
 Eligibility Next Round: **1 pt**

**Eligibility Status**  
 1  2

Lease Area	Live Bid
Commercial Lease OCS-A 0489 ("North Lease Area")	<input checked="" type="checkbox"/> \$65,474
Commercial Lease OCS-A 0490 ("South Lease Area")	<input type="checkbox"/> \$93,940
As-bid Price:	\$65,474
Imputed Credit (0.00%):	\$0
<b>Cash Bid:</b>	<b>\$65,474</b>

**Note:**

- Activity: Actual number of Lease Areas that you have included in your Live Bid in the current Round.
- Eligibility: Maximum number of Lease Areas that you may include in your Live Bid in the current Round.
- Eligibility Next Round: Equal to the number of Lease Areas included in your current Live Bid.
- Imputed Credit applies only to the highest priced Lease Area selected.
- Live Bid placed for this Lease Area
- No bid placed for this Lease Area



# Auction Screen Shots

**BOEM** Auction No. ATLW3, Atlantic Wind Three  
BUREAU OF OCEAN ENERGY MANAGEMENT Offshore Maryland

Time left in Round **35:09** 13 January 2014, 14:50:51 EST  
 Round 1 started at 14:26:00 and will end at 15:26:00 EST

[Current Bids](#) [Generate Bid Confirmation](#) [My Results](#) [Auction Info](#) [View Demand](#) [Round Results](#) [Auction Schedule](#) [Messages](#) [Downloads](#)

## Current Bids - Round 1

Place a Live Bid by checking the box in the Live Bid column.

Activity: **2 pts** Eligibility: **2 pts**  
 Eligibility Next Round: **2 pts**

**Eligibility Status**  
 1  2

Lease Area	Live Bid
Commercial Lease OCS-A 0489 ("North Lease Area")	<input checked="" type="checkbox"/> \$65,474
Commercial Lease OCS-A 0490 ("South Lease Area")	<input checked="" type="checkbox"/> \$93,940
As-bid Price:	\$159,414
Imputed Credit (0.00%):	\$0
<b>Cash Bid:</b>	<b>\$159,414</b>

**Note:**

- Activity: Actual number of Lease Areas that you have included in your Live Bid in the current Round.
- Eligibility: Maximum number of Lease Areas that you may include in your Live Bid in the current Round.
- Eligibility Next Round: Equal to the number of Lease Areas included in your current Live Bid.
- Imputed Credit applies only to the highest priced Lease Area selected.
- Live Bid placed for this Lease Area
- No bid placed for this Lease Area

# Auction Screen Shots

**BOEM** Auction No. ATLW3, Atlantic Wind Three  
BUREAU OF OCEAN ENERGY MANAGEMENT Offshore Maryland

Time left in Round **33:38** 13 January 2014, 14:52:22 EST  
 Round 1 started at 14:26:00 and will end at 15:26:00 EST

[Current Bids](#) | [Generate Bid Confirmation](#) | [My Results](#) | [Auction Info](#) | [View Demand](#) | [Round Results](#) | [Auction Schedule](#) | [Messages](#) | [Downloads](#)

## Bid Confirmation for Adeh & Co - Round 1

Round:  Bid data as of Monday, 13 January 2014, 14:52:17 EST.

[Print this page](#)

Activity: **2 pts**

Eligibility: **2 pts**

Eligibility Next Round: **2 pts** (based on current Live Bid)

Lease Area	Live Bid
Commercial Lease OCS-A 0489 ("North Lease Area")	✓ \$65,474
Commercial Lease OCS-A 0490 ("South Lease Area")	✓ \$93,940
As-bid Price:	\$159,414
Imputed Credit (0.00%):	\$0
<b>Cash Bid:</b>	<b>\$159,414</b>

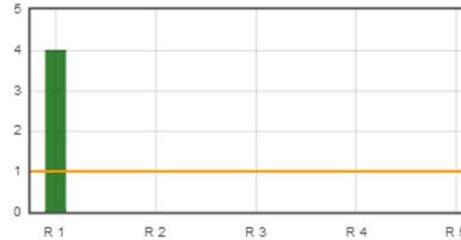
**Note:**

- Activity: Actual number of Lease Areas that you have included in your Live Bid in the current Round.
- Eligibility: Maximum number of Lease Areas that you may include in your Live Bid in the current Round.
- Eligibility Next Round: Equal to the number of Lease Areas included in your current Live Bid.
- Imputed Credit applies only to the highest priced Lease Area selected.

# Auction Screen Shots

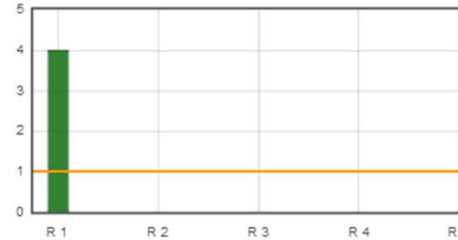
## View Demand

Demand



[Commercial Lease OCS-A 0489 \("North Lease Area"\)](#)

Demand



[Commercial Lease OCS-A 0490 \("South Lease Area"\)](#)

Show Round:  ▾

Lease Area	Demand
	Round 1
Commercial Lease OCS-A 0489 ("North Lease Area")	4
Commercial Lease OCS-A 0490 ("South Lease Area")	4

**Note:**

- Demand reflects the number of bidders placing Live Bids that include this Lease Area.

# Auction Screen Shots

- Current Bids
- Generate Bid Confirmation
- My Results**
- Auction Info
- View Demand
- Round Results
- Auction Schedule
- Messages
- Downloads

## My Results

### Posted Bids:

 [\[Print this page\]](#)

This table contains the results for all posted Rounds in which you were eligible to bid.

Round	Intra-round Bid			Live Bid			Eligibility this Round	Activity this Round	Eligibility next Round
	Lease Areas	As-bid Price	Cash Bid	Lease Areas	As-bid Price	Cash Bid			
Round 1	N/A			0489/0490	\$159,414	\$159,414	2 pts	2 pts	2 pts

### Note:

- Eligibility: Maximum number of Lease Areas on which you could have placed a Live Bid (this Round) or will be able to place a Live Bid (next Round).
- Activity: Actual Number of Lease Areas on which you placed a Live Bid.
- My Percentage Credit (0.00%).

# Auction Screen Shots

## Round Results

[\[Print this page\]](#)

Round	Lease Area	Price	Demand	Increment	Price
		This Round			Next Round
Round 1	Commercial Lease OCS-A 0489 ("North Lease Area")	\$65,474	4	20.00%	\$78,569
	Commercial Lease OCS-A 0490 ("South Lease Area")	\$93,940	4	20.00%	\$112,728

**Note:**

- Demand reflects the number of bidders placing Live Bids that include this Lease Area.

# Auction Screen Shots

**BOEM** Auction No. ATLW3, Atlantic Wind Three  
BUREAU OF OCEAN ENERGY MANAGEMENT Offshore Maryland

13 January 2014, 14:56:44 EST  
Round 2 [Prices](#) have been announced.  
Round 2 will start at 15:55:00 EST

[Current Bids](#) | [Generate Bid Confirmation](#) | [My Results](#) | [Auction Info](#) | [View Demand](#) | [Round Results](#) | [Auction Schedule](#) | [Messages](#) | **[Downloads](#)**

## Downloads

To download a file, please click on a link below. When prompted by the browser, please select either **OPEN** (to look at the file) or **SAVE** (to make a copy of the file on your computer). If you decide to **SAVE** the file, the system will suggest a default name. You can override the default name, but you should choose a filename that ends in ".csv".

- [\[.csv\]](#) « My Bids
- [\[.csv\]](#) « Round Results

# Auction Screen Shots

**BOEM** Auction No. ATLW3, Atlantic Wind Three  
BUREAU OF OCEAN ENERGY MANAGEMENT Offshore Maryland

Time left in Round **28:36**  
 You have no Bid in place.

13 January 2014, 14:59:24 EST  
 Round 2 started at 14:58:00 and will end at 15:28:00 EST

[Current Bids](#) | [Generate Bid Confirmation](#) | [My Results](#) | [Auction Info](#) | [View Demand](#) | [Round Results](#) | [Auction Schedule](#) | [Messages](#) | [Downloads](#)

## Current Bids - Round 2

Place a Live Bid by checking the box in the Live Bid column. If the number of Lease Areas in your Live Bid is less than it was last Round, you may optionally place an Intra-round Bid. Placing an Intra-round Bid reduces your Eligibility by 1 pt for this Round.

Activity: **0 pts** Eligibility: **2 pts**  
 Eligibility Next Round: **0 pts**

### Eligibility Status

1  2

Lease Area	Previous Round Bid	Intra-round Bid	Live Bid
Commercial Lease OCS-A 0489 ("North Lease Area")	<input checked="" type="checkbox"/> \$65,474	<input type="checkbox"/>	<input type="checkbox"/> \$78,569
Commercial Lease OCS-A 0490 ("South Lease Area")	<input checked="" type="checkbox"/> \$93,940	<input type="checkbox"/>	<input type="checkbox"/> \$112,728
As-bid Price:		<input type="text" value="Place Intra-round Bid"/>	\$0
Imputed Credit (0.00%):		-	\$0
<b>Cash Bid:</b>		-	<b>\$0</b>

### Note:

- Activity: Actual number of Lease Areas that you have included in your Live Bid in the current Round.
- Eligibility: Maximum number of Lease Areas that you may include in your Live Bid in the current Round.
- Eligibility Next Round: Equal to the number of Lease Areas included in your current Live Bid.
- Imputed Credit applies only to the highest priced Lease Area selected.
- Live Bid placed for this Lease Area
- No bid placed for this Lease Area
- You can not place a bid for this Lease Area at this time
- Intra-round Bid placed for this Lease Area

# Auction Screen Shots

**BOEM** Auction No. ATLW3, Atlantic Wind Three  
BUREAU OF OCEAN ENERGY MANAGEMENT Offshore Maryland

Time left in Round **25:12** 13 January 2014, 15:02:48 EST  
 Round 2 started at 14:58:00 and will end at 15:28:00 EST

[Current Bids](#) [Generate Bid Confirmation](#) [My Results](#) [Auction Info](#) [View Demand](#) [Round Results](#) [Auction Schedule](#) [Messages](#) [Downloads](#)

## Current Bids - Round 2

Place a Live Bid by checking the box in the Live Bid column. If the number of Lease Areas in your Live Bid is less than it was last Round, you may optionally place an Intra-round Bid. Placing an Intra-round Bid reduces your Eligibility by 1 pt for this Round.

Activity: **2 pts** Eligibility: **2 pts**  
 Eligibility Next Round: **2 pts**

**Eligibility Status**  
 1  2

Lease Area	Previous Round Bid	Intra-round Bid	Live Bid
Commercial Lease OCS-A 0489 ("North Lease Area")	<input checked="" type="checkbox"/> \$65,474		<input checked="" type="checkbox"/> \$78,569
Commercial Lease OCS-A 0490 ("South Lease Area")	<input checked="" type="checkbox"/> \$93,940		<input checked="" type="checkbox"/> \$112,728
As-bid Price:		<input type="text" value="Place Intra-round Bid"/>	\$191,297
Imputed Credit (0.00%):		-	\$0
<b>Cash Bid:</b>		-	<b>\$191,297</b>

**Note:**

- Activity: Actual number of Lease Areas that you have included in your Live Bid in the current Round.
- Eligibility: Maximum number of Lease Areas that you may include in your Live Bid in the current Round.
- Eligibility Next Round: Equal to the number of Lease Areas included in your current Live Bid.
- Imputed Credit applies only to the highest priced Lease Area selected.
- Live Bid placed for this Lease Area
- No bid placed for this Lease Area
- You can not place a bid for this Lease Area at this time
- Intra-round Bid placed for this Lease Area



# Auction Screen Shots

**BOEM** Auction No. ATLW3, Atlantic Wind Three  
BUREAU OF OCEAN ENERGY MANAGEMENT Offshore Maryland

Time left in Round **23:37**  
 You have no Bid in place.

13 January 2014, 15:04:23 EST  
 Round 2 started at 14:58:00 and will end at 15:28:00 EST

[Current Bids](#) | [Generate Bid Confirmation](#) | [My Results](#) | [Auction Info](#) | [View Demand](#) | [Round Results](#) | [Auction Schedule](#) | [Messages](#) | [Downloads](#)

## Current Bids - Round 2

Place a Live Bid by checking the box in the Live Bid column. If the number of Lease Areas in your Live Bid is less than it was last Round, you may optionally place an Intra-round Bid. Placing an Intra-round Bid reduces your Eligibility by 1 pt for this Round.

Activity: **0 pts** Eligibility: **2 pts**  
 Eligibility Next Round: **0 pts**

### Eligibility Status

1 2

Lease Area	Previous Round Bid	Intra-round Bid	Live Bid
Commercial Lease OCS-A 0489 ("North Lease Area")	<input checked="" type="checkbox"/> \$65,474	<input checked="" type="checkbox"/>	<input type="checkbox"/> \$78,569
Commercial Lease OCS-A 0490 ("South Lease Area")	<input checked="" type="checkbox"/> \$93,940	<input checked="" type="checkbox"/>	<input type="checkbox"/> \$112,728
As-bid Price:			\$0
Imputed Credit (0.00%):			\$0
<b>Cash Bid:</b>			<b>\$0</b>

\$159,414 <  < \$191,297

Please enter a price greater than \$159,414.

or [Cancel](#)

### Note:

- Activity: Actual number of Lease Areas that you have
- Eligibility: Maximum number of Lease Areas that you
- Eligibility Next Round: Equal to the number of Lease Areas included in your current Live Bid.
- Imputed Credit applies only to the highest priced Lease Area selected.
- Live Bid placed for this Lease Area
- No bid placed for this Lease Area
- You can not place a bid for this Lease Area at this time
- Intra-round Bid placed for this Lease Area

# Auction Screen Shots

**BOEM** Auction No. ATLW3, Atlantic Wind Three  
BUREAU OF OCEAN ENERGY MANAGEMENT Offshore Maryland

Time left in Round **21:19**  
 You have no Bid in place.

13 January 2014, 15:06:41 EST  
 Round 2 started at 14:58:00 and will end at 15:28:00 EST

[Current Bids](#) | [Generate Bid Confirmation](#) | [My Results](#) | [Auction Info](#) | [View Demand](#) | [Round Results](#) | [Auction Schedule](#) | [Messages](#) | [Downloads](#)

## Current Bids - Round 2

Place a Live Bid by checking the box in the Live Bid column. If the number of Lease Areas in your Live Bid is less than it was last Round, you may optionally place an Intra-round Bid. Placing an Intra-round Bid reduces your Eligibility by 1 pt for this Round.

Activity: **0 pts** Eligibility: **2 pts**  
 Eligibility Next Round: **0 pts**

Eligibility Status

**1** **2**

Lease Area	Previous Round Bid	Intra-round Bid	Live Bid
Commercial Lease OCS-A 0489 ("North Lease Area")	<input checked="" type="checkbox"/> \$65,474	<input checked="" type="checkbox"/>	<input type="checkbox"/> \$78,569
Commercial Lease OCS-A 0490 ("South Lease Area")	<input checked="" type="checkbox"/> \$93,940	<input checked="" type="checkbox"/>	<input type="checkbox"/> \$112,728
As-bid Price:			\$0
Imputed Credit (0.00%):		\$159,414 < <input type="text" value="180000"/> < \$191,297	\$0
Cash Bid:			\$0

**Note:**

- Activity: Actual number of Lease Areas that you have bid on in this Round.
- Eligibility: Maximum number of Lease Areas that you are eligible to bid on in this Round.
- Eligibility Next Round: Equal to the number of Lease Areas included in your current Live Bid.
- Imputed Credit applies only to the highest priced Lease Area selected.
- Live Bid placed for this Lease Area
- No bid placed for this Lease Area
- You can not place a bid for this Lease Area at this time
- Intra-round Bid placed for this Lease Area

# Auction Screen Shots

**BOEM** Auction No. ATLW3, Atlantic Wind Three  
BUREAU OF OCEAN ENERGY MANAGEMENT Offshore Maryland

Time left in Round **17:12**

13 January 2014, 15:10:48 EST  
 Round 2 started at 14:58:00 and will end at 15:28:00 EST

[Current Bids](#) | [Generate Bid Confirmation](#) | [My Results](#) | [Auction Info](#) | [View Demand](#) | [Round Results](#) | [Auction Schedule](#) | [Messages](#) | [Downloads](#)

## Current Bids - Round 2

Place a Live Bid by checking the box in the Live Bid column. If the number of Lease Areas in your Live Bid is less than it was last Round, you may optionally place an Intra-round Bid. Placing an Intra-round Bid reduces your Eligibility by 1 pt for this Round.

Activity: **0 pts** Eligibility: **1 pt**  
 Eligibility Next Round: **0 pts**

### Eligibility Status

1 2

Lease Area	Previous Round Bid	Intra-round Bid	Live Bid
Commercial Lease OCS-A 0489 ("North Lease Area")	<input checked="" type="checkbox"/> \$65,474	<input checked="" type="checkbox"/>	<input type="checkbox"/> \$78,569
Commercial Lease OCS-A 0490 ("South Lease Area")	<input checked="" type="checkbox"/> \$93,940	<input checked="" type="checkbox"/>	<input type="checkbox"/> \$112,728
As-bid Price:		<input type="button" value="Edit"/> or <input type="button" value="Delete"/>	\$0
		<b>\$180,000</b>	
Imputed Credit (0.00%):		\$0	\$0
<b>Cash Bid:</b>		<b>\$180,000</b>	<b>\$0</b>

### Note:

- Activity: Actual number of Lease Areas that you have included in your Live Bid in the current Round.
- Eligibility: Maximum number of Lease Areas that you may include in your Live Bid in the current Round.
- Eligibility Next Round: Equal to the number of Lease Areas included in your current Live Bid.
- Imputed Credit applies only to the highest priced Lease Area selected.
- Live Bid placed for this Lease Area
- No bid placed for this Lease Area
- You can not place a bid for this Lease Area at this time
- Intra-round Bid placed for this Lease Area

# Auction Screen Shots

**BOEM** Auction No. ATLW3, Atlantic Wind Three  
BUREAU OF OCEAN ENERGY MANAGEMENT Offshore Maryland

Time left in Round **15:26**

13 January 2014, 15:12:34 EST  
 Round 2 started at 14:58:00 and will end at 15:28:00 EST

[Current Bids](#) | [Generate Bid Confirmation](#) | [My Results](#) | [Auction Info](#) | [View Demand](#) | [Round Results](#) | [Auction Schedule](#) | [Messages](#) | [Downloads](#)

## Current Bids - Round 2

Place a Live Bid by checking the box in the Live Bid column. If the number of Lease Areas in your Live Bid is less than it was last Round, you may optionally place an Intra-round Bid. Placing an Intra-round Bid reduces your Eligibility by 1 pt for this Round.

Activity: **1 pt** Eligibility: **1 pt**  
 Eligibility Next Round: **1 pt**

### Eligibility Status

1 2

Lease Area	Previous Round Bid	Intra-round Bid	Live Bid
Commercial Lease OCS-A 0489 ("North Lease Area")	<input checked="" type="checkbox"/> \$65,474	<input checked="" type="checkbox"/>	<input checked="" type="checkbox"/> \$78,569
Commercial Lease OCS-A 0490 ("South Lease Area")	<input checked="" type="checkbox"/> \$93,940	<input checked="" type="checkbox"/>	<input type="checkbox"/> \$112,728
As-bid Price:		<input type="button" value="Edit"/> or <input type="button" value="Delete"/> \$180,000	\$78,569
Imputed Credit (0.00%):		\$0	\$0
<b>Cash Bid:</b>		<b>\$180,000</b>	<b>\$78,569</b>

### Note:

- Activity: Actual number of Lease Areas that you have included in your Live Bid in the current Round.
- Eligibility: Maximum number of Lease Areas that you may include in your Live Bid in the current Round.
- Eligibility Next Round: Equal to the number of Lease Areas included in your current Live Bid.
- Imputed Credit applies only to the highest priced Lease Area selected.
- Live Bid placed for this Lease Area
- No bid placed for this Lease Area
- You can not place a bid for this Lease Area at this time
- Intra-round Bid placed for this Lease Area

# Auction Screen Shots

**BOEM** Auction No. ATLW3, Atlantic Wind Three  
BUREAU OF OCEAN ENERGY MANAGEMENT Offshore Maryland

Time left in Round **13:24**

13 January 2014, 15:14:36 EST  
 Round 2 started at 14:58:00 and will end at 15:28:00 EST

[Current Bids](#) | [Generate Bid Confirmation](#) | [My Results](#) | [Auction Info](#) | [View Demand](#) | [Round Results](#) | [Auction Schedule](#) | [Messages](#) | [Downloads](#)

## Current Bids - Round 2

Place a Live Bid by checking the box in the Live Bid column. If the number of Lease Areas in your Live Bid is less than it was last Round, you may optionally place an Intra-round Bid. Placing an Intra-round Bid reduces your Eligibility by 1 pt for this Round.

Activity: **1 pt** Eligibility: **1 pt**  
 Eligibility Next Round: **1 pt**

### Eligibility Status

1 2

Lease Area	Previous Round Bid	Intra-round Bid	Live Bid
Commercial Lease OCS-A 0489 ("North Lease Area")	<input checked="" type="checkbox"/> \$65,474	<input checked="" type="checkbox"/>	<input type="checkbox"/> \$78,569
Commercial Lease OCS-A 0490 ("South Lease Area")	<input checked="" type="checkbox"/> \$93,940	<input checked="" type="checkbox"/>	<input checked="" type="checkbox"/> \$112,728
As-bid Price:		<input type="button" value="Edit"/> or <input type="button" value="Delete"/> <b>\$180,000</b>	\$112,728
Imputed Credit (0.00%):		\$0	\$0
<b>Cash Bid:</b>		<b>\$180,000</b>	<b>\$112,728</b>

### Note:

- Activity: Actual number of Lease Areas that you have included in your Live Bid in the current Round.
- Eligibility: Maximum number of Lease Areas that you may include in your Live Bid in the current Round.
- Eligibility Next Round: Equal to the number of Lease Areas included in your current Live Bid.
- Imputed Credit applies only to the highest priced Lease Area selected.
- Live Bid placed for this Lease Area
- No bid placed for this Lease Area
- You can not place a bid for this Lease Area at this time
- Intra-round Bid placed for this Lease Area

# Auction Screen Shots

**BOEM** Auction No. ATLW3, Atlantic Wind Three 13 January 2014, 15:19:29 EST  
BUREAU OF OCEAN ENERGY MANAGEMENT Offshore Maryland **The Auction has concluded.**

[Current Bids](#) | 
 [Generate Bid Confirmation](#) | 
 [My Results](#) | 
 [Auction Info](#) | 
 [View Demand](#) | 
 [Round Results](#) | 
 [Auction Schedule](#) | 
 [Messages](#) | 
 [Downloads](#)

## My Results - Auction Concluded

**Congratulations!**

[Print this page](#)

**Subject to the determination of the panel, you have preliminarily been designated the winner of the following Lease Areas:**

Lease Area	As-bid Price	Imputed Credit	Cash Bid
Commercial Lease OCS-A 0489 ("North Lease Area"), Commercial Lease OCS-A 0490 ("South Lease Area")	\$180,000	\$0	\$180,000

BOEM reserves the right not to issue a lease pursuant to this bid pursuant to its authority under the Outer Continental Shelf Lands Act (43 U.S.C. 1331 et seq. and section 1337(c)(3) in particular), 30 CFR 585.224(f), and the rules listed in the Final Sale Notice.

**Posted Bids:**

This table contains the results for all posted Rounds in which you were eligible to bid.

Round	Intra-round Bid			Live Bid			Eligibility this Round	Activity this Round	Eligibility next Round
	Lease Areas	As-bid Price	Cash Bid	Lease Areas	As-bid Price	Cash Bid			
Round 2	0489/0490	\$180,000	\$180,000	----/0490	\$112,728	\$112,728	1 pt	1 pt	N/A
Round 1	N/A			0489/0490	\$159,414	\$159,414	2 pts	2 pts	2 pts

**Note:**

- Eligibility: Maximum number of Lease Areas on which you could have placed a Live Bid (this Round) or will be able to place a Live Bid (next Round).
- Activity: Actual Number of Lease Areas on which you placed a Live Bid.
- My Percentage Credit (0.00%).
- Imputed Credit applies only to the highest priced Lease Area selected.

# Auction Screen Shots

**BOEM** Auction No. ATLW3, Atlantic Wind Three 13 January 2014, 15:19:54 EST  
BUREAU OF OCEAN ENERGY MANAGEMENT Offshore Maryland **The Auction has concluded.**

[Current Bids](#) | 
 [Generate Bid Confirmation](#) | 
 **[My Results](#)** | 
 [Auction Info](#) | 
 [View Demand](#) | 
 [Round Results](#) | 
 [Auction Schedule](#) | 
 [Messages](#) | 
 [Downloads](#)

## My Results - Auction Concluded

### Your Final Results:

 [\[Print this page\]](#)

Lease Area	As-bid Price	Imputed Credit	Cash Bid
You did not win any Lease Areas in the Auction.			

### Posted Bids:

This table contains the results for all posted Rounds in which you were eligible to bid.

Round	Intra-round Bid			Live Bid			Eligibility this Round	Activity this Round	Eligibility next Round
	Lease Areas	As-bid Price	Cash Bid	Lease Areas	As-bid Price	Cash Bid			
Round 2	N/A			N/A			2 pts	0 pts	N/A
Round 1	N/A			0489/0490	\$159,414	\$159,414	2 pts	2 pts	2 pts

#### Note:

- Eligibility: Maximum number of Lease Areas on which you could have placed a Live Bid (this Round) or will be able to place a Live Bid (next Round).
- Activity: Actual Number of Lease Areas on which you placed a Live Bid.
- My Percentage Credit (0.00%).
- Imputed Credit applies only to the highest priced Lease Area selected.

# Bidder Preparation



# Prospective Bidders

- Receive, via email, the User Guide for the Auction Software
  - One copy of the User Guide will be emailed to the email address listed for the main “Point of Contact” for your company (Verify with BOEM)
- Receive, via FedEx (signature required), usernames, passwords and tokens for the Auction System for the Authorized Individuals
  - Allows access to the Auction System for the mock auction and live auction
  - One set per authorized individual

# Mock Auction

- Mock Auction (training session) is scheduled just prior to the auction to provide bidders with an opportunity to test their login codes and place practice bids
- Participation in the Mock Auction will occur remotely over the Internet, from the bidders' respective offices
- Recommend that bidders use the PC and connection that they intend to use for the live auction
- No results of the Mock Auction will be published
- Auction Manager will provide support (telephone and messaging facility of auction system) during the Mock Auctions

# Live Auctions

- Participation in the Auctions will occur remotely over the Internet, from the bidders' respective offices
- Bidders should establish protocol that a single Authorized Individual will be submitting bids; and that the second and third Authorized Individuals are available as backups
- All submissions subject to the constraints of the Auction Rules
- Auction Manager will provide support (telephone and messaging facility of auction system) during the Live Auctions

# Questions and Answers

BOEM and Power Auctions LLC