

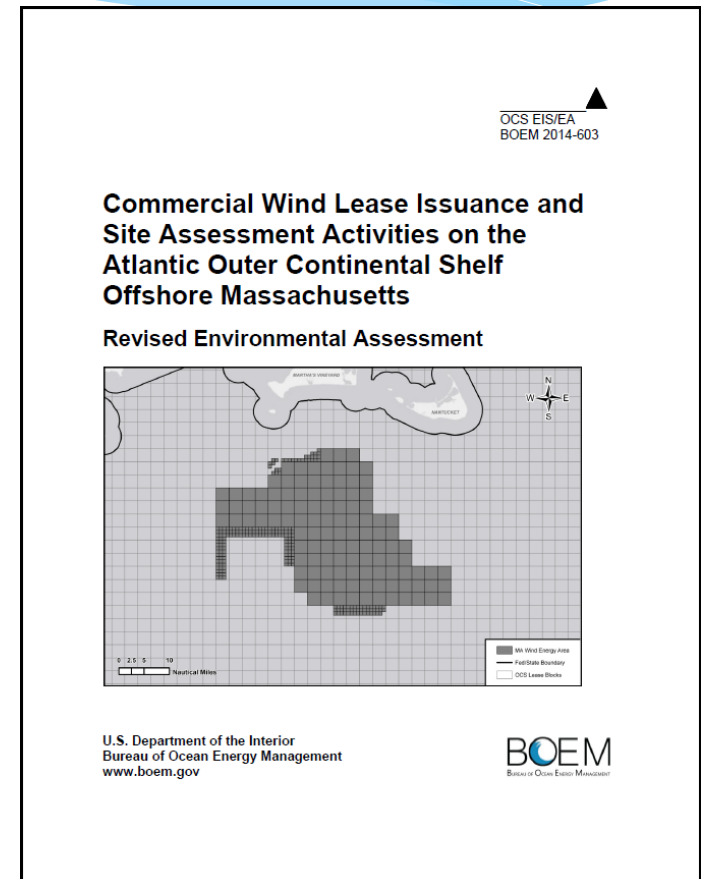
# Overview of Environmental Stipulations and Next Steps for Environmental Review of Plans for Offshore Massachusetts

**Brian Krevor**  
**Environmental Protection Specialist**  
**Bureau of Ocean Energy Management,**  
**Office of Renewable Energy Programs**

**April 29, 2015**

# Massachusetts Environmental Assessment (EA)

- \* June 4, 2014 - Revised EA and Finding of No Significant Impact published
- \* EA analyzed:
  - \* Lease issuance
  - \* Site characterization surveys
  - \* Site assessment (meteorological towers and buoys)
- \* EA did not analyze wind energy facilities



# Consultations

- \* Coastal Zone Management Act
- \* Magnuson-Stevens Fishery Conservation and Management Act (Essential Fish Habitat)
- \* Endangered Species Act\*
- \* National Historic Preservation Act (NHPA)\*
  
- \* Resulted in lease stipulations

# Addendum C : Environmental Lease Stipulations

- \* Standard operating conditions part of EA's proposed action
- \* Developed through environmental review process and consultations
- \* Addendum C only addresses activities from lease issuance to the submittal of a plan
- \* Additional construction and/or operation stipulations will be included as terms and conditions of plan approval

# Environmental Lease Stipulations: Vessel Strike Avoidance Measures

- \* Section 4.1.1 of Addendum C
- \* All vessels conducting activities in support of plan (i.e. a SAP and/or COP) submittal must :
  - \* Maintain a vigilant watch for protected species
  - \* Restrict speed to 10 knot in Dynamic Management Area (DMA)
  - \* Restrict speed to 10 knot from November 1 – July 31

# Environmental Lease Stipulations: Vessel Strike Avoidance Measures

- \* Section 4.1.1.3 – 4.1.1.6 of Addendum C covers separation distances:
  - \* 500m from North Atlantic Right Whales
  - \* 100m from all other non-delphinoid cetacean(s) (e.g. whales)
  - \* 50m from all delphinoid cetacean(s), sea turtles, and pinnipeds (e.g. seals)
  - \* Instructions on what to do if a protected species is sighted in a vessel's path or separation distance

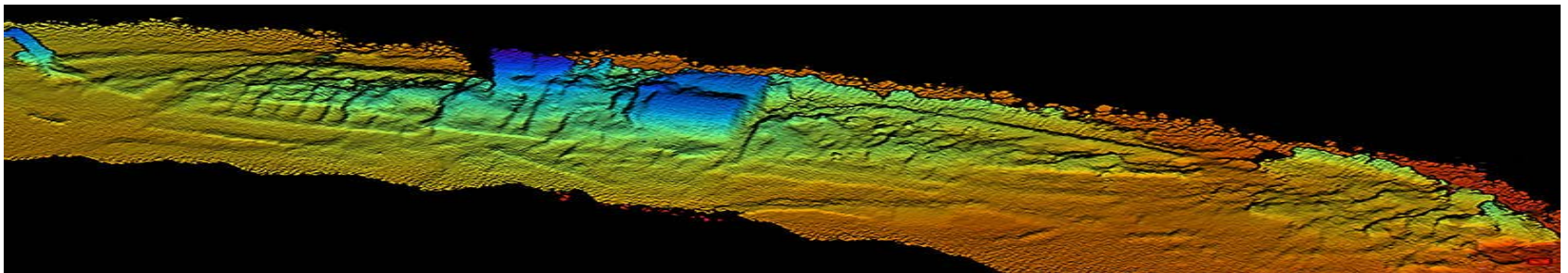


# Environmental Lease Stipulations: Archeological Survey Requirements

- \* Section 4.2 of Addendum C of the Leases
- \* Lessee must provide the results of an archaeological survey with its SAP and COP
- \* Tribal pre-survey meeting
  - \* Must be held at least 30-days prior to survey activities
  - \* At least 45 days prior to survey activities, the lessee must invite the Narragansett Indian Tribe, the Mashpee Wampanoag Tribe, and the Wampanoag Tribe of Gay Head (Aquinnah)
  - \* Lessee and the Qualified Marine Archaeologist will discuss the Lessee's Survey Plan and consider tribal requests to monitor portions of the archaeological survey and the geotechnical exploration activities

# Environmental Lease Stipulations: Archeological Survey Requirements

- \* Post-review discovery clause (Section 4.4.7)
  - \* If a potential archaeological resource is discovered, the Lessee must: halt all seafloor/bottom disturbing activities in the area, notify the lessor within 24 hours, keep the location confidential, and conduct additional investigations as directed by BOEM
  - \* BOEM has the obligation (under NHPA) to inform consulting parties if there is a discovery





# Environmental Lease Stipulations: HRG and Geotechnical Survey Requirements

- \* Section 4.3 of Addendum C of the Leases
- \* For all vessels conducting activities in support of a plan (i.e. a SAP and/or COP):
  - \* Visibility requirements
  - \* 200m exclusion zone for cetaceans, pinnipeds, and sea turtles will be monitored by a protected species observer
  - \* 500m separation distance for North Atlantic Right Whales
  - \* Electromechanical survey equipment ramp-up
  - \* Shutdown requirements for protected species entering exclusion zone

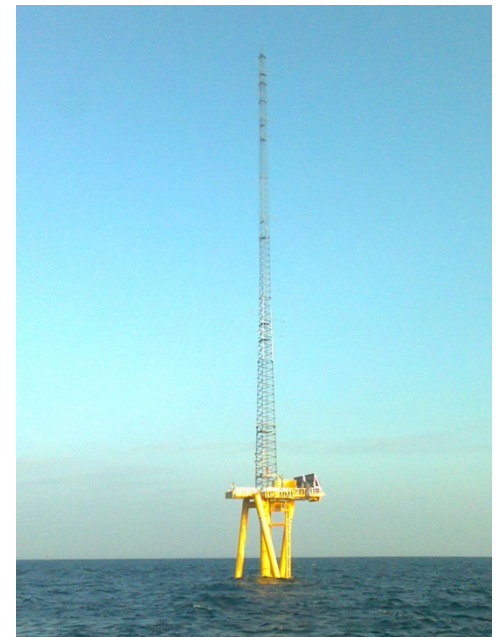
# Environmental Lease Stipulations: Reporting Requirements



- \* Section 4.4 of Addendum C
- \* Report injured or dead protected species (Appendix A)
- \* Report observed impacts to protected species
- \* Final report of HRG & Geotech. survey activities and observations
- \* Protected species observer reports (Appendix B)

# Next Steps: Site Assessment Plans (SAPs)

- \* BOEM will determine if MA EA and consultations adequately consider the proposed activities
- \* Unless effects are significantly different, no additional NEPA required
- \* NHPA Section 106 consultation required
- \* NHPA Section 106 finding document per our Programmatic Agreements – 30-day consulting party review



# Next Steps: Construction and Operations Plans (COPs)

- \* Submitted after SAP
- \* BOEM will conduct a site/project specific environmental review, most likely an Environmental Impact Statement, and consultations
- \* Additional opportunities for public comment
- \* Main factors influencing timing: scale and complexity of the proposed facility and activities; level of public controversy; and number of environmental and socioeconomic issues



# Questions?

**Brian Krevor**

Environmental Protection Specialist

Office of Renewable Energy Programs, Environment Branch

Bureau of Ocean Energy Management

45600 Woodland Road, VAM-OREP

Sterling, Virginia 20166

Office (703) 787-1346

Fax (703) 787-1708

[brian.krevor@boem.gov](mailto:brian.krevor@boem.gov)