

BOEM Pacific Region's Renewable Energy Program

Tracy Logan

Renewable Energy Specialist
Bureau of Ocean Energy Management
Pacific OCS Region
June 3, 2015 • Honolulu, Hawaii

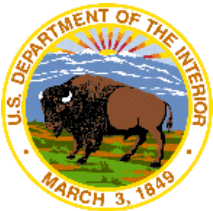


Bureau within the Department of the Interior

- Oversees development of nation's energy and mineral resources on the Outer Continental Shelf (OCS)

OCS Lands Act of 1953 as amended, including amendments per Energy Policy Act of 2005

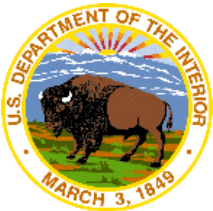
- Oil/gas, marine minerals (e.g., sand and gravel)
- Renewable energy (leases, easements, rights-of-way)
- Alternate use of existing OCS facilities

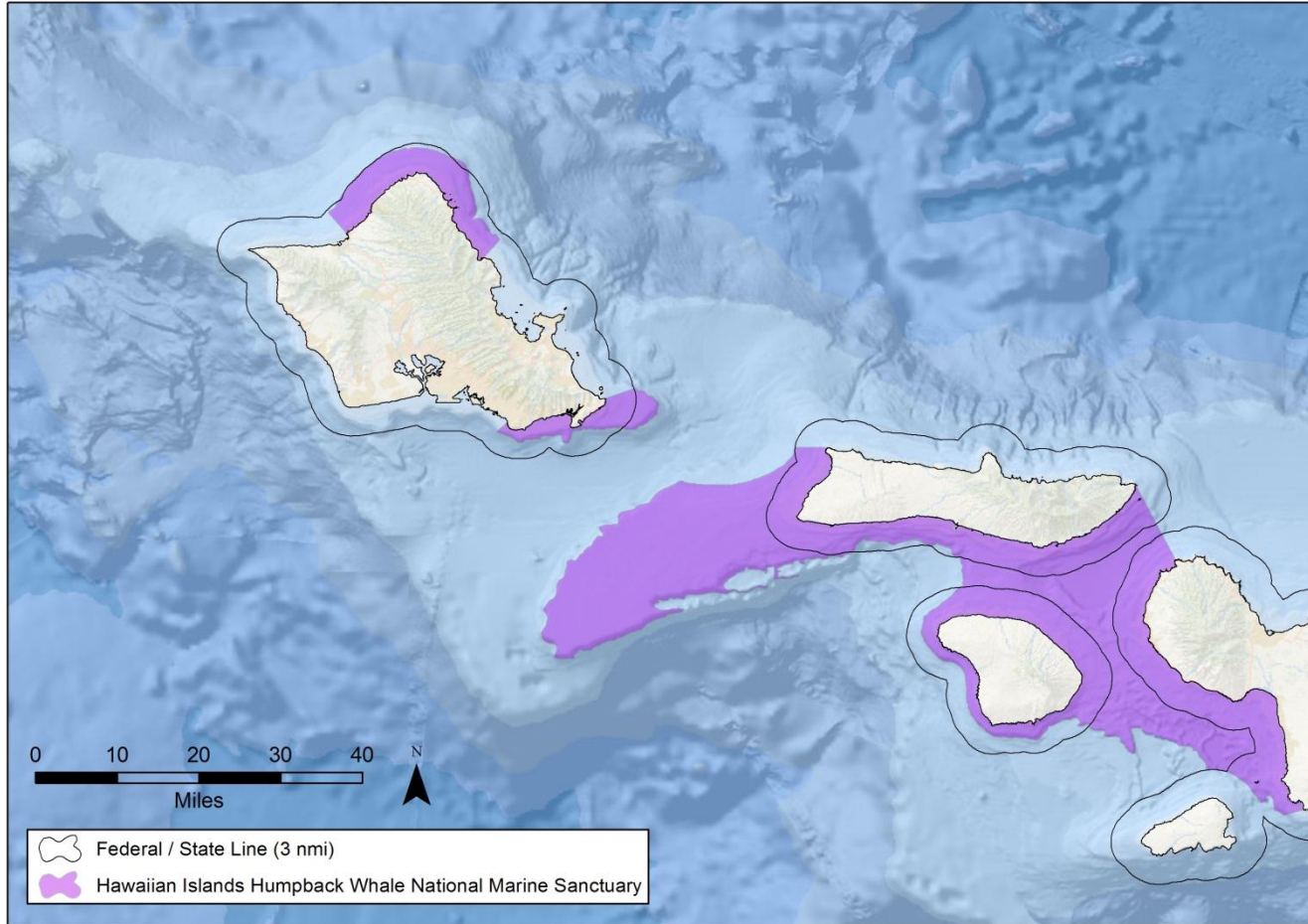


OCS jurisdictional boundary typically 3-200 nautical miles (nmi) from coastline of a state

BOEM has no jurisdiction within:

- National Park System
- National Wildlife Refuge System
- National Marine Sanctuary System
- Any National Monument





Document Path: H:\GIS\Maps\Hawaii\Hawaii (Sanctuary) (5-7-15).mxd



California

- Interest in projects, but no formal lease requests

Oregon (Task Force established in 2010)

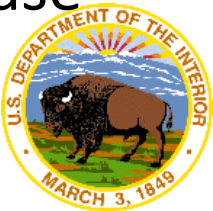
- WindFloat Pacific
- Pacific Marine Energy Center-South Energy Test Site (PMEC-SETS)

Washington

- Little interest to date

Hawaii (Task Force established in 2011)

- Development is prospective, two unsolicited lease requests received in Jan 2015



Wind



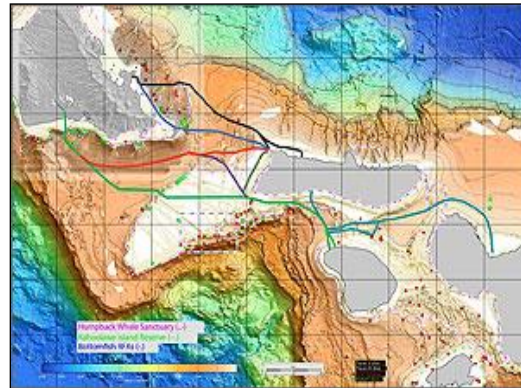
Ocean Current*



Wave*



Transmission



**BOEM is responsible for leasing areas of the OCS for ocean current and wave energy projects, and FERC regulates and issues licenses for construction and operation.*





Questions?

*Up Next: Unsolicited Lease Requests
Oahu Northwest and Oahu South*

Tracy Logan

Renewable Energy Specialist / Hawaii Task Force Coordinator
Office of Strategic Resources
Bureau of Ocean Energy Management
Pacific OCS Region
805-384-6315

Tracy.Logan@boem.gov

