

BAY STATE WIND OFFSHORE WIND FARM

BOEM Rhode Island and Massachusetts Renewable Energy Task Force Meeting

April 24, 2018



Michael Evans, Ørsted, U.S. Wind Power

Agenda

- **Project Overview**
- **Proposed COP Submittal and Approval Schedule**
- **Completed Survey and Site Assessment Activities**
- **Upcoming Survey and Site Assessment Activities**
- **On-going and Future Studies/Investigations**
- **Update on Stakeholder Engagement**

Bay State Wind – Project Overview

- **Phase 1 Development Area**
 - 113,180 acres within Renewable Energy Lease Area OCS-A 0500
- **180 Wind Turbine Generator Positions**
 - 165 established locations and 15 alternates
- **Up to 3 Foundation Options**
- **Up to 4 Offshore Substations**
- **Inter-Array and Offshore Substation Interconnector Cables**
- **Up to 2 Export Cable Corridors to Shore**
 - 60 mile corridor to Somerset, MA
 - 48 mile corridor to Falmouth, MA
- **Up to 2 New Onshore Substations**
 - Somerset, MA
 - Bourne, MA
- **Up to 2 New Onshore Interconnection Cables**

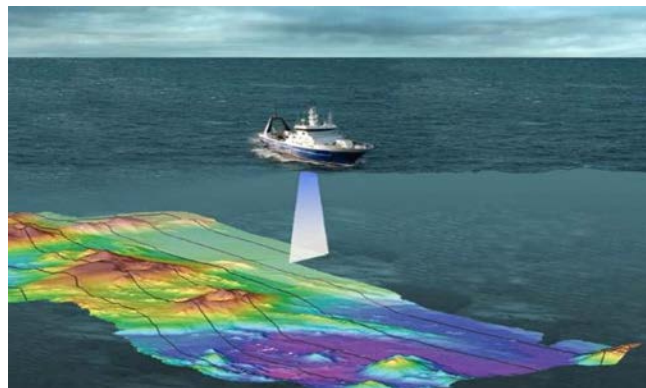


Proposed COP Submittal and Approval Schedule – Key Milestones

Milestones	Target
Bay State Wind LLC Submits COP	December 31, 2018
BOEM publishes Notice of Intent (NOI) in Federal Register (initiates scoping period)	No Later than Q2 2019
BOEM publishes Notice of Availability (NOA) of DEIS in Federal Register	No Later than Q1 2020
BOEM publishes NOA of FEIS	No Later than Q2 2020
Approves COP and Issues of Record of Decision (ROD)	No Later than Q3 2020

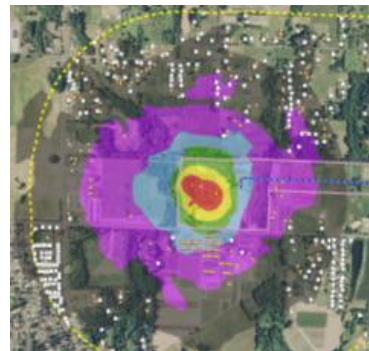
Completed Survey and Site Assessment Activity

- **2 FLiDAR, 1 Wave/Current Buoys – Jul 2017**
- **Geophysical – Aug 2016-Apr 2018**
 - Recon Lease Area – Aug-Oct 2016
 - Recon Somerset Cable – May-Jun 2017
 - Recon Phase 1 Area – Aug 2017-Apr 2018
- **Geotechnical – Jan-Apr 2018**
 - CPTs and Vibracores
 - Phase 1 Area, WTGs
- **Benthic – May-Jun 2017**
 - Somerset Cable and Phase 1 Area
 - Concurrent with Geophys surveys
- **Visual – Oct 2017**
 - Photographs from select KOPs
- **Avian – May-Aug 2017**
- **Recon at Onshore SS sites – August 2017**



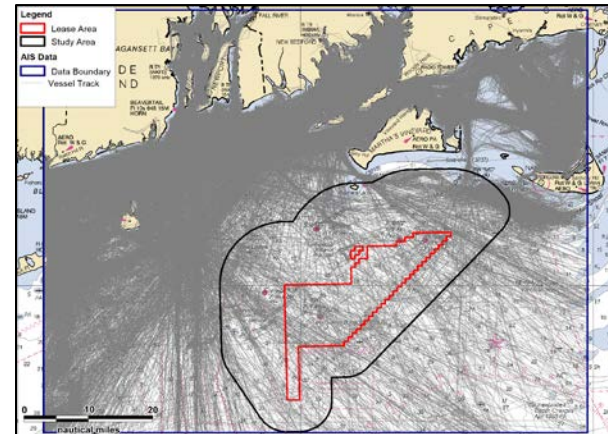
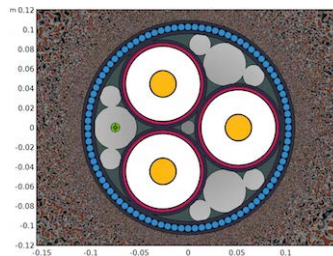
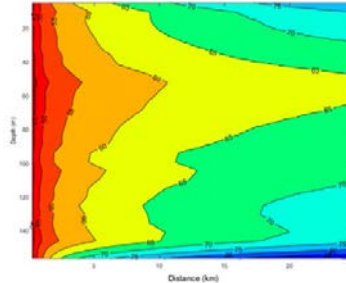
Upcoming Survey and Site Assessment Activity

- **Noise**
 - Spring/Summer 2018
 - Ambient sound surveys at NSAs around on-shore Substations, HDDs
- **Visual and Historic Properties**
 - Spring/Summer 2018
 - Photos from additional KOPs
 - Architectural Reconnaissance Survey
- **On-Shore Cultural/Archaeological**
- **Wetlands and Waterbodies**
 - Summer 2018
 - Pending survey access permissions



Ongoing and Future Studies/Investigations

- **Visual Impact**
 - Photo and video simulations
- **Sediment and Water Quality**
 - Sediment transport model
- **In-Air and Underwater Noise**
 - Acoustic and hydro-acoustic models
- **EMF**
 - Onshore and offshore EMF model
- **Air Emissions**, including modeling
- **Fisheries**
- **Navigational Risk**
- **Aviation Risk**
- **Cable Burial Risk**



Stakeholder Engagement

- **Open Houses** – Four in November 2017
- **Federal/State Agencies, Tribes Pre-Survey and Assessment Meetings**
- **Community Liaison Officers for Martha's Vineyard and South Coast**
- **Engagement with eNGOs including Natural Resources Defense Council, National Wildlife Federation, International Fund for Animal Welfare, Conservation Law Foundation, and more**
- **WHOI** – Overlapping survey deconfliction
- **Conferences (IPF, AWEA, etc)**
- **BOEM workshops**
- **National Academy of Sciences meeting**
- **NYSERDA panels**



Stakeholder Engagement - Fisheries

- Fisheries Communication Plan
- Fisheries Liaison Officer
- Fishing Industry Representatives
- Fisheries Advisory Panel
- New England Fishery Management Council
- Mid-Atlantic Fishery Management Council
- Notice to Fishermen
- Notice to Mariners



ORGANIZATIONS	
Atlantic Capes Fisheries	New Bedford Seafood Consulting
Atlantic Offshore Lobstermen's Association	New England Fishery Management Council
Atlantic Red Crab Company	New London Seafood Distributors
Cape Cod Commercial Fishermen's Alliance	NOAA/National Marine Fisheries Service Region and Science Centers
Commercial Fisheries Center of RI	Northeast Seafood Coalition
Commercial Fisheries News	Northeast Sector Services Network
Commercial Fisheries Research Foundation	Offshore MW
Coonamessett Farm Foundation	Port of New Bedford
Eastern New England Scallop Association	Priority Charters
Fishery Survival Fund	Rhode Island Coastal Resources Management Council
Fishing United	Rhode Island Department of Environmental Management
Francis Fleet	Rhode Island Division of Fish and Wildlife
Liberty Lobster Wholesale Seafood	Rhode Island Lobstermen's Association
Long Island (NY) Commercial Fishermen's Association	Rhode Island Charter Boat Association
Loper-Bright Fisheries	Rhode Island Monkfishermen's Association
Massachusetts Division of Marine Fisheries	Seafreeze Ltd.
Massachusetts Lobstermen's Association	Surfside Foods
Martha's Vineyard Fishermen's Preservation Trust	The Nature Conservancy
Maryland DNR, Marine Fisheries Division	Town Dock Seafood
Massachusetts Department of Fish and Game	University of Massachusetts SMAST
Massachusetts Fisheries Working Group	US Coast Guard 1st District
New Bedford Fishing Heritage Center	Whaling City Seafood Display Auction
New Bedford Marine Hydraulics	

Plans for Commercial Development

- **Massachusetts** – Submitted bid in December 2017
 - 400 MW or 800 MW
 - 55 MW or 110 MW battery storage
 - Award expected May 2018
- **Connecticut** – Submitted bid in April 2018
 - ~200 MW
 - Award expected July 2018



THANK YOU

Michael Evans

Ørsted

Environmental Manager

Phone: (614) 218-4286

Email: micev@orsted.com

