



---

# **DoD assessment of offshore military activities and wind energy development on the Outer Continental Shelf off North Carolina**

**Colonel Frank Bottorff, USMC**

**Chief of Staff G-5**

**Marine Corps Installations East**

**Representing the Office of the Deputy Under Secretary of Defense for Readiness**

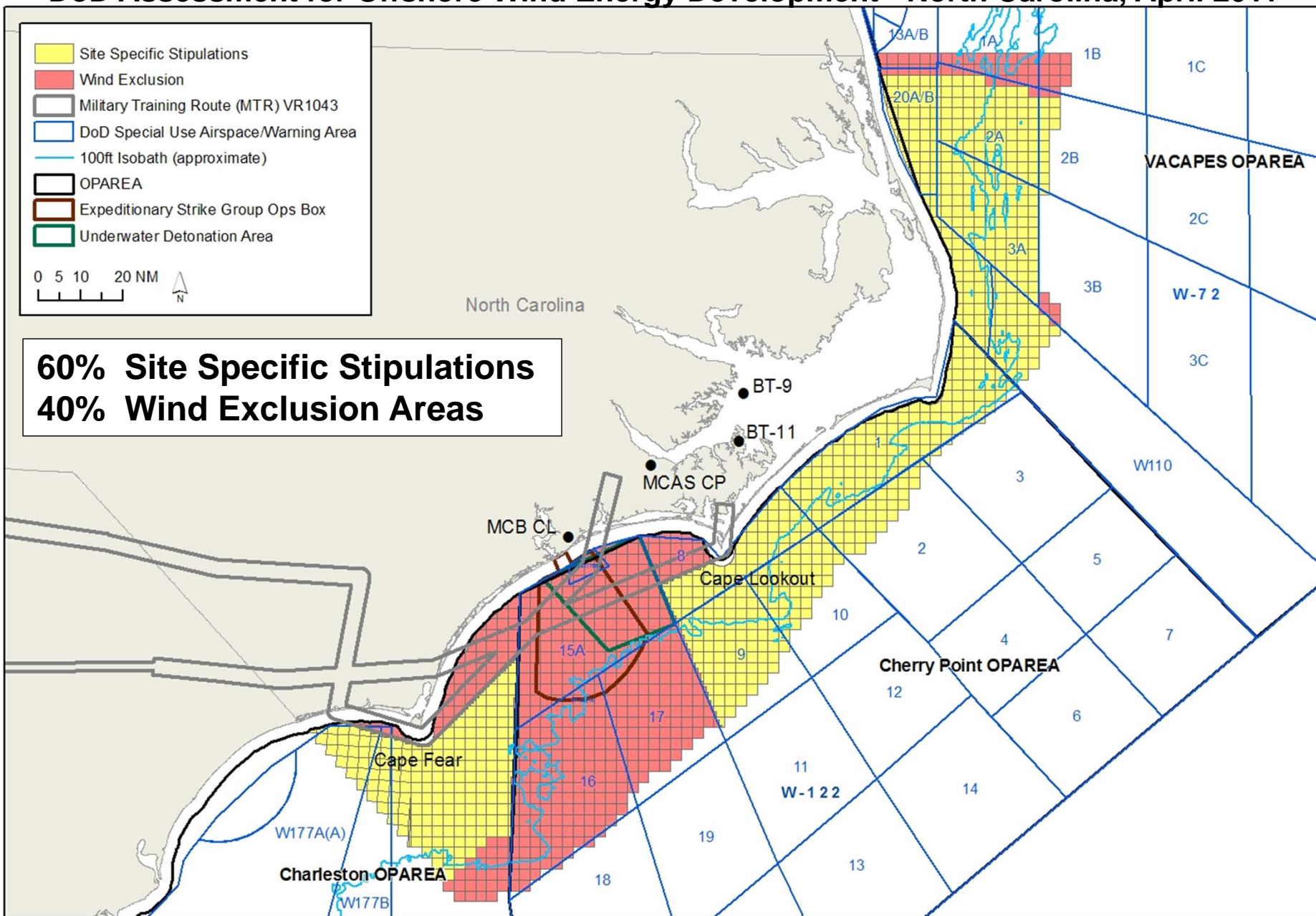


# Methodology

---

- **Categorize DoD offshore equities and potential wind energy development using:**
  - 1. Unrestricted**
  - 2. Site Specific Stipulations**
  - 3. Wind Energy Exclusion Area**
- **DoD Operating Area (OPAREA) overlaid with on BOEMRE lease block grid**
- **Extensive analysis and coordination process with the military services**

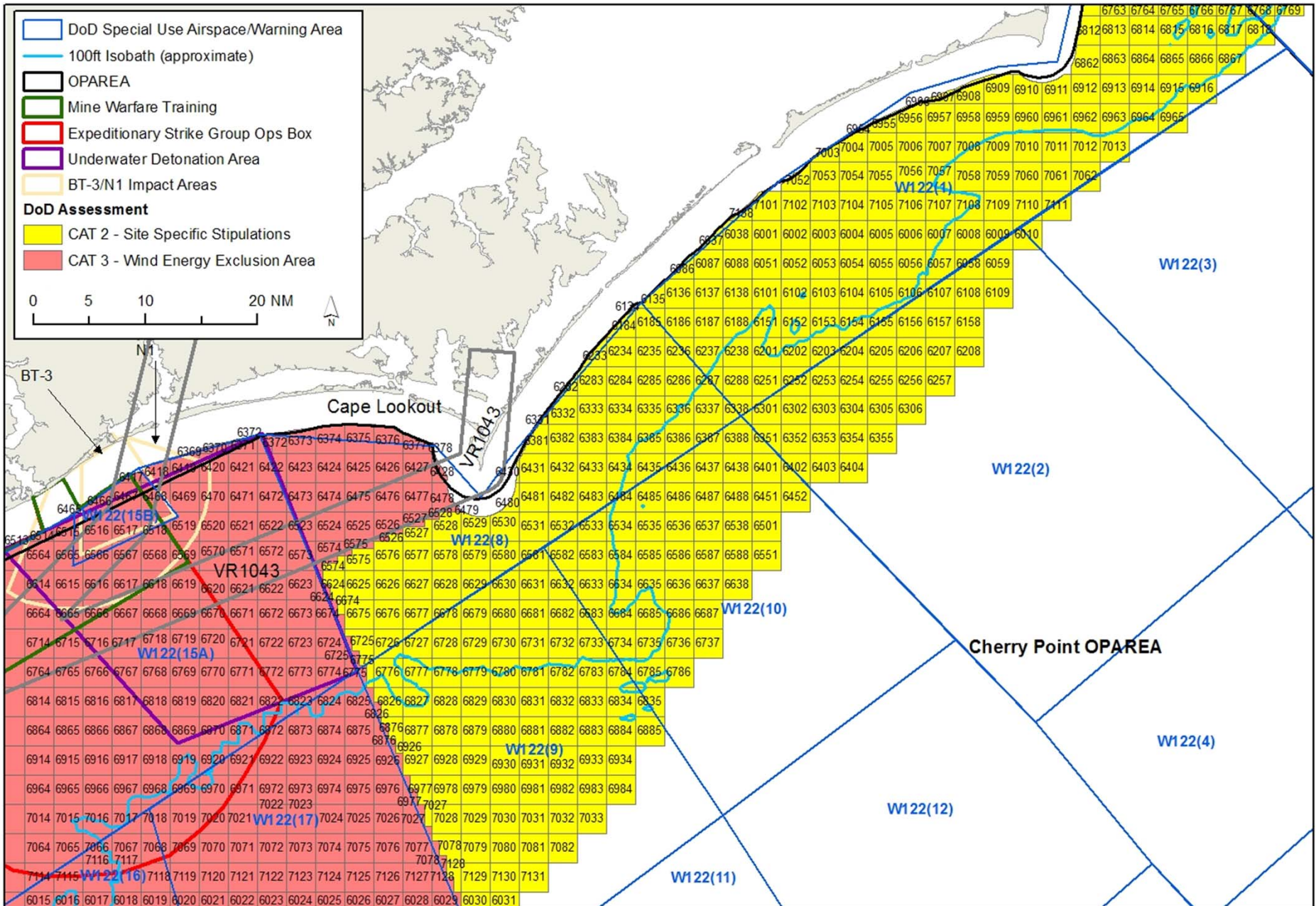
# DoD Assessment for Offshore Wind Energy Development - North Carolina, April 2011





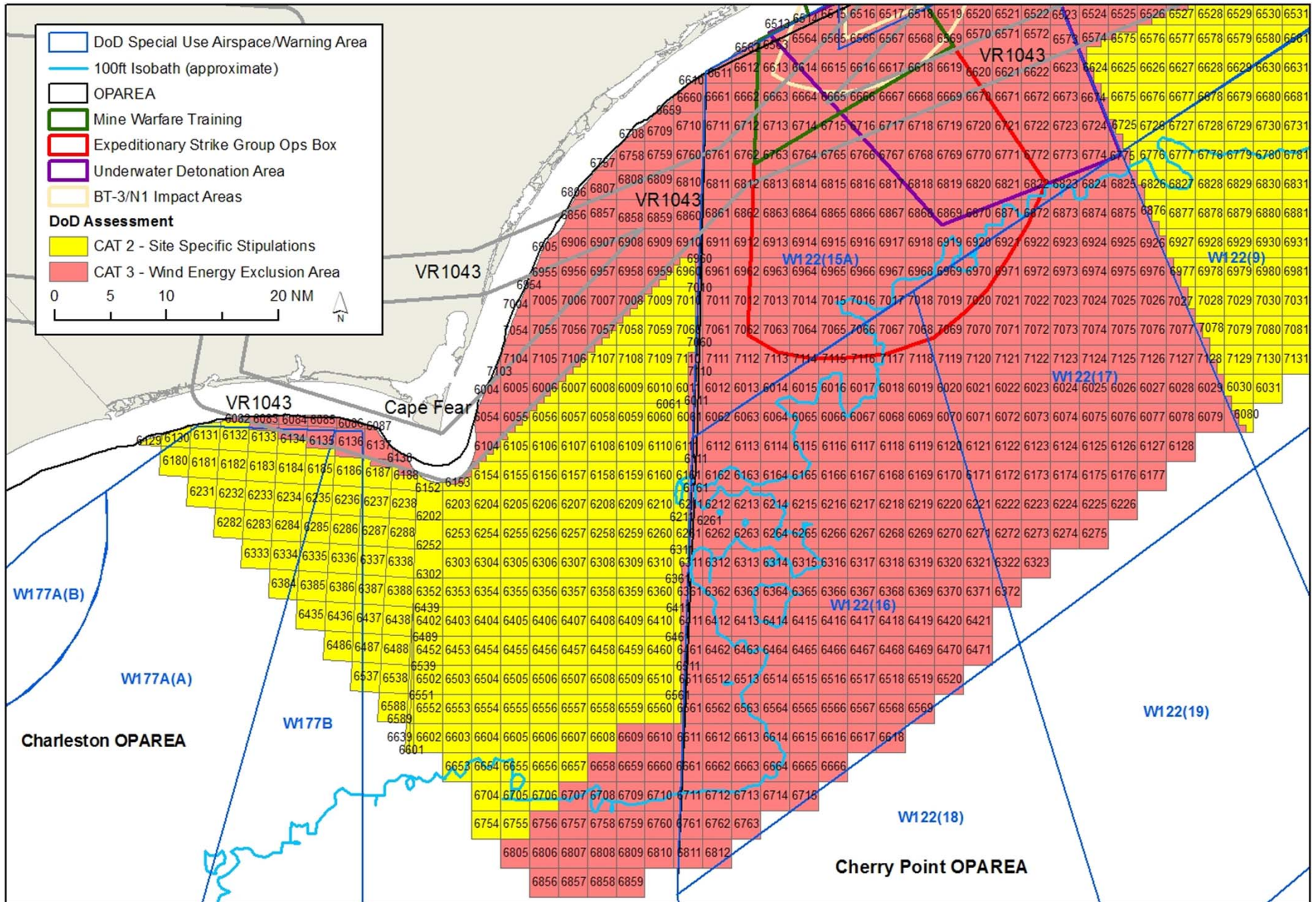


# DRAFT DoD NC Offshore Wind Compatibility Assessment – 8 APR 2011





# DRAFT DoD NC Offshore Wind Compatibility Assessment – 8 APR 2011





# DoD Assessment for Offshore Wind Energy Development - North Carolina, April 2011

