

Hawaiian Islands Humpback Whale National Marine Sanctuary



Malia Chow
Sanctuary Superintendent
Hawaii OCS Renewable Task Force
Dec. 5, 2012



What Are National Marine Sanctuaries?



*“Areas of the marine environment with **special** conservation, recreational, ecological, historical, cultural, archeological, or esthetic **qualities**...”*



Claire Fackler

National Marine Sanctuaries Act (Sec. 301)

What Are National Marine Sanctuaries?

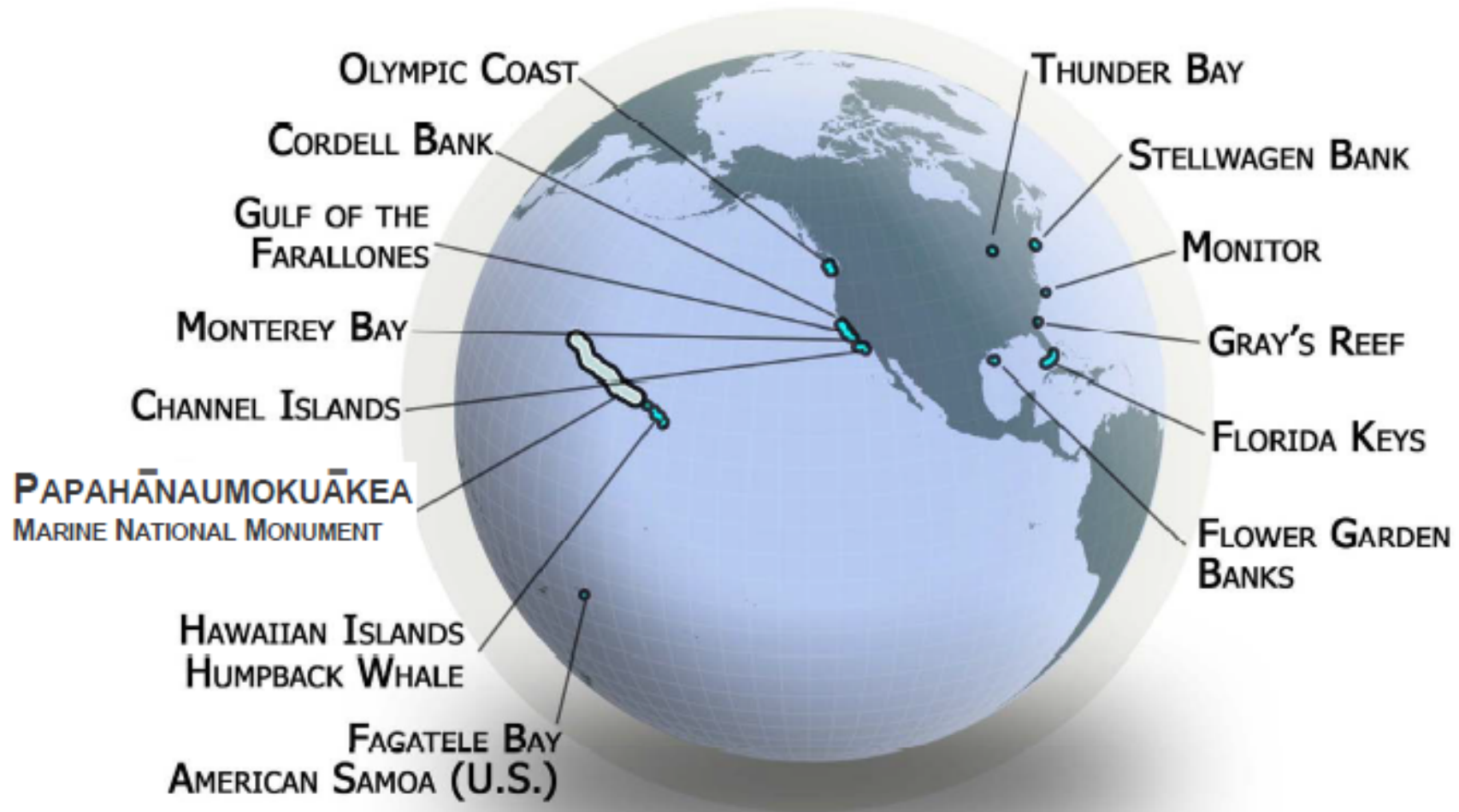


“To facilitate all private and public uses to the extent compatible with the primary purpose of resource protection...”



National Marine Sanctuaries Act (Sec. 301)

National Marine Sanctuary System



“Responsible for More U.S. Territory than U.S. Park Service and FWS Refuges Combined.”

Offshore Development and National Marine Sanctuaries



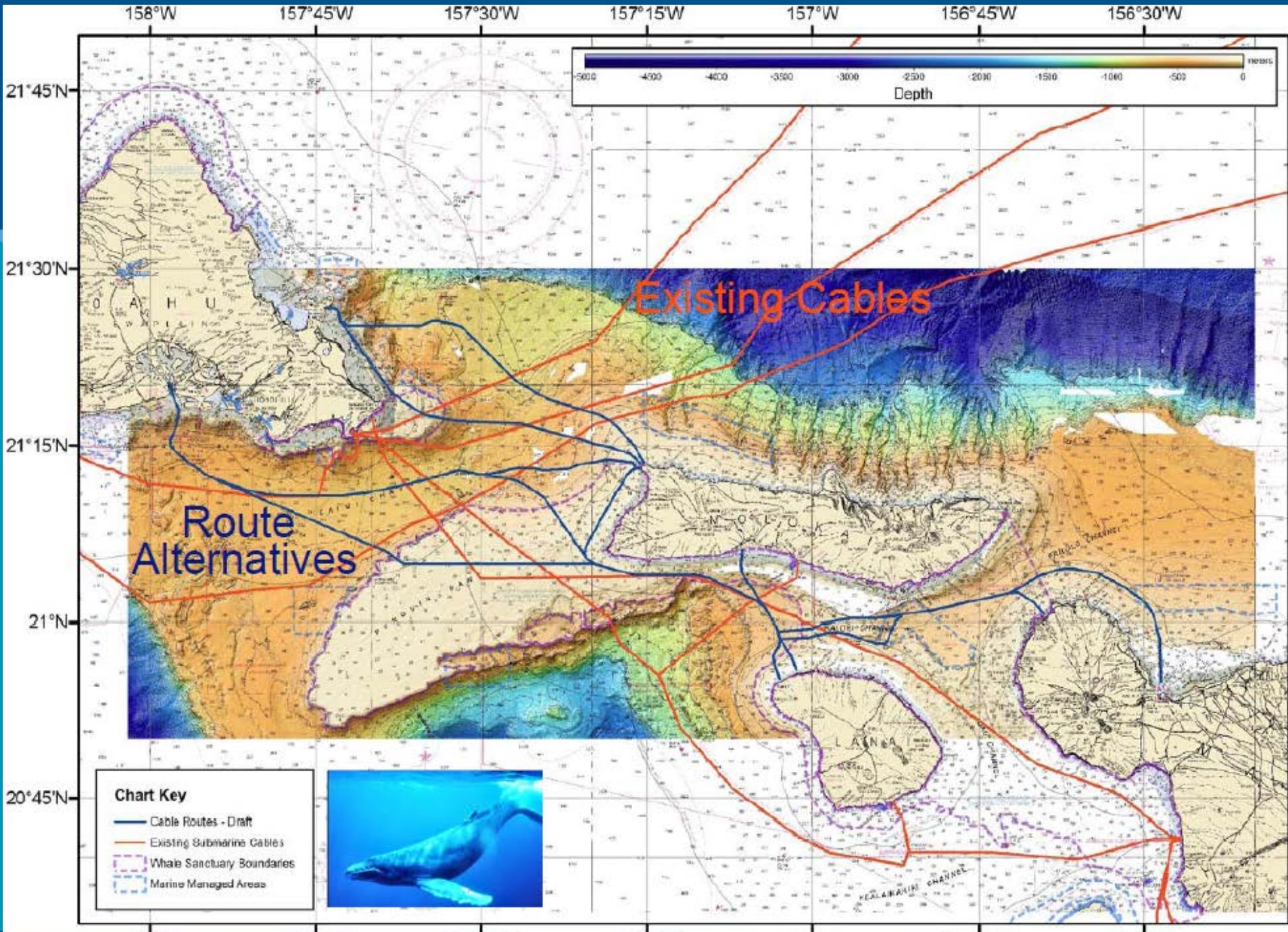
Overall, **ONMS** supports:
Energy independence and development of renewable and green resources to the extent they are consistent with the policies and objectives of the National Marine Sanctuaries Act



Offshore Development and National Marine Sanctuaries



- Under the Energy Policy Act of 2005, BOEM cannot issue a lease, easement or right-of-way for any alternative energy project within a national marine sanctuary
- Federal agencies are **required to consult** with ONMS for any proposed lease, easement, or right-of-way outside a sanctuary that is likely to destroy or injure sanctuary resources.
 - Section 304(d) of the National Marine Sanctuaries Act



Submarine cables and National Marine Sanctuaries



- In most national marine sanctuaries, it is **unlawful to alter or place material on the seabed or submerged lands** unless conducted pursuant to a sanctuary permit or other authorization.
- HIHWNMS **does not currently prohibit disturbances to the seafloor**, activities involving alteration of the seabed or placement of material on it are lawful if conducted pursuant to a valid federal or state permit.

Hawaiian Islands Humpback Whale NATIONAL MARINE SANCTUARY



- Five separate protected areas
- From shoreline to depth of 100 fathoms (600 feet)
- 1,370 square miles of federal and state waters



Sanctuary Boundary

0 50 100 Kilometers

0 50 100 Miles



Sanctuary Management Plan Review



- Determine the **future direction and scope** of the sanctuary
- Address **current and emerging** issues
- Consider **additional protections** for marine and cultural resources of national significance



Sanctuary Review Timeline



NEPA/HEPA process

- 2010 - NOAA Issued Notice of Intent
Statewide public scoping meetings
- 2011 - Priority Issues Identified
- 2012 - Sanctuary Citizen Advisory Council
management recommendations
 - State becomes a Joint Lead Agency
- 2013 - draft management plan/EIS
- 2014 - final management plan

<http://hawaiihumpbackwhale.noaa.gov>

Mahalo!

