



United States
Department of the Interior
Minerals Management Service

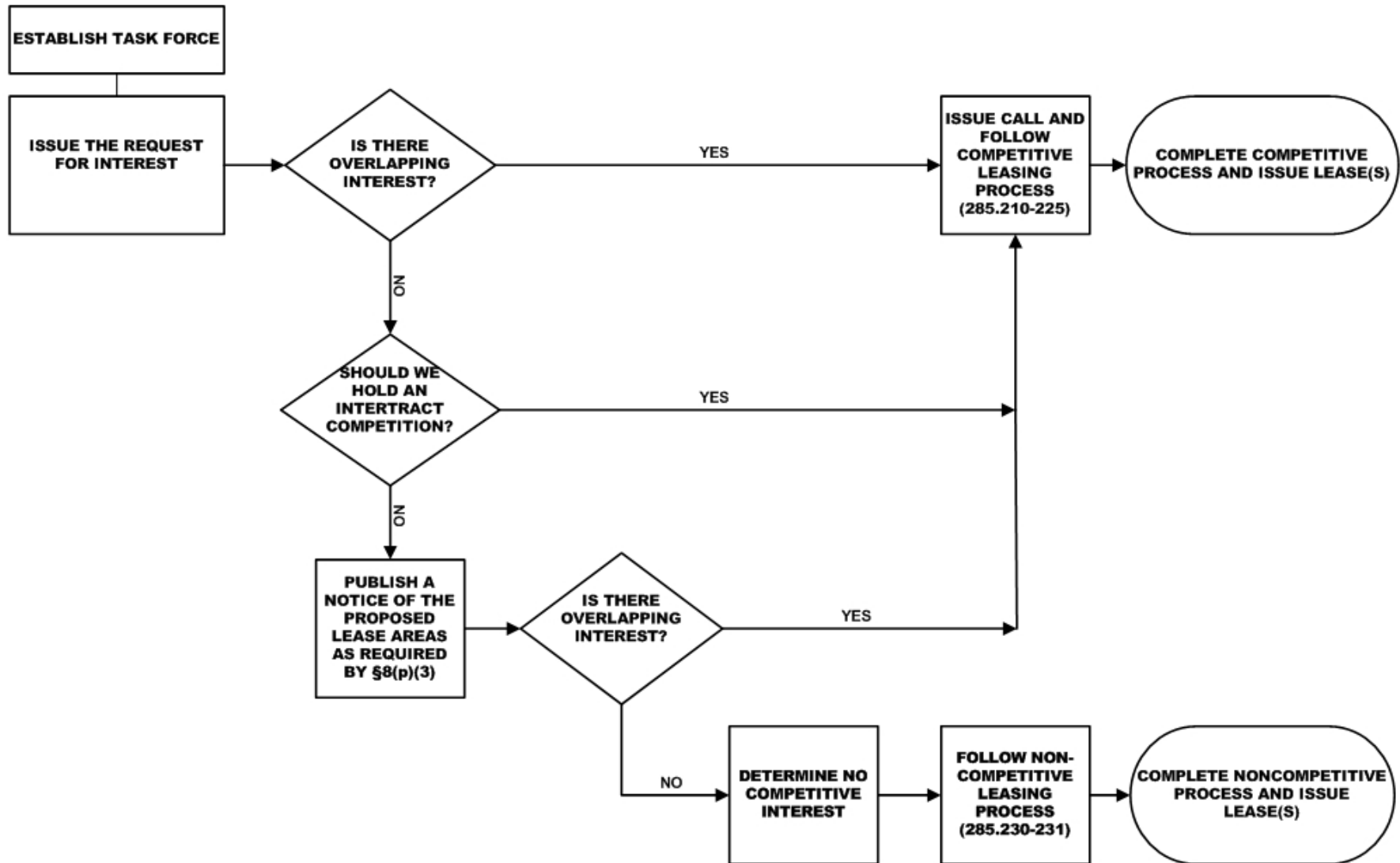
MMS

Overview of MMS Leasing Process

MMS Rhode Island Task Force
November 17, 2009 Narragansett, Rhode Island

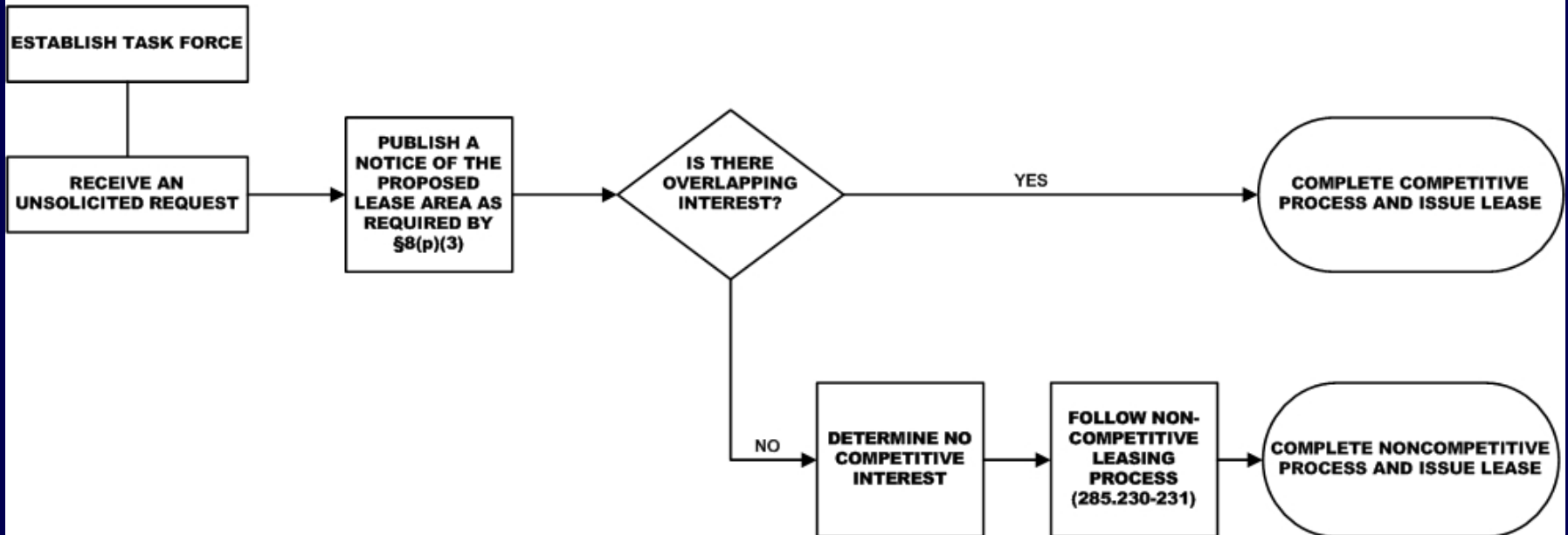
Timothy Redding, Program Analyst
Renewable Energy Program

STARTING THE COMMERCIAL WIND LEASE PROCESS WITH A REQUEST FOR INTEREST*

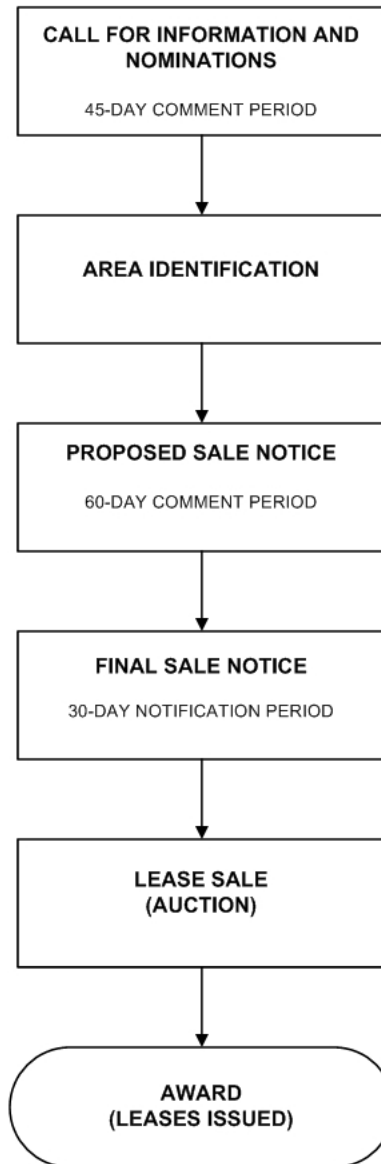


*Depending on responses submitted by developers and determinations made by MMS, it is possible that the leasing process could be exclusively competitive, exclusively noncompetitive, or a mixture (competitive for some nominations and noncompetitive for others).

STARTING THE COMMERCIAL WIND LEASE PROCESS WITH AN UNSOLICITED REQUEST



**PROCESS FOLLOWING MMS DETERMINATION OF COMPETITIVE INTEREST IN
COMMERCIAL WIND LEASING AND DECISION TO HOLD A SALE**



PROCESS FOLLOWING MMS FINAL DETERMINATION OF NO COMPETITIVE INTEREST FOR COMMERCIAL WIND LEASING

